

2013 **Journey**



**CLICK TO NAVIGATE**

|                          |                        |                                |                          |                                |                                |                                |                          |
|--------------------------|------------------------|--------------------------------|--------------------------|--------------------------------|--------------------------------|--------------------------------|--------------------------|
| <a href="#">Overview</a> | <a href="#">Lounge</a> | <a href="#">Dining</a>         | <a href="#">Cab</a>      | <a href="#">SuperStructure</a> | <a href="#">Floorplans</a>     | <a href="#">Paint</a>          | <a href="#">WIT Club</a> |
| <a href="#">Features</a> | <a href="#">Galley</a> | <a href="#">Bedroom   Bath</a> | <a href="#">Exterior</a> | <a href="#">Chassis</a>        | <a href="#">Interior Décor</a> | <a href="#">Specifications</a> | <a href="#">Warranty</a> |



On the cover: 42E Harvest Night Full-Body Paint

42E Lancaster with Coffee-Glazed Vienna Maple Cabinetry

## Welcoming You With Open Arms

With the heralded Freightliner®-based Maxum Chassis® as its foundation, the Journey® is a luxury coach built for the long haul. Not only will you enjoy world-class ride and handling, its lowered-rail design creates cavernous storage compartments with up to 246 cubic feet of storage capacity. Four distinct floorplans are loaded with coveted amenities such as Corian® solid-surface countertops, Ultraleather™ furniture and hardwood cabinetry in your choice of Honey Cherry, Forest Cherry or Coffee-Glazed Vienna Maple finishes. And, only Winnebago Industries® offers the true luxury of our SuperStructure® construction process for uncompromised quality and durability. Take the 2013 Winnebago Journey for a spin and experience a whole new way to travel.

### Why Journey?

- Unmatched performance of Maxum Chassis
- Full-wall, triple or quad slideouts
- Ultraleather power cab seats
- Expansive exterior storage
- TrueAir® Maximum Comfort Air Conditioning
- PowerLine® Energy Management System
- Corian countertops
- Premier clearcoat automotive finish
- Extendable dining table with buffet
- Extendable sectional sofa (NA 36M)
- MCD American Duo® solar/blackout roller shades



**Recognized Quality** The RV Dealers Association bestows its annual Quality Circle Award based on dealer ratings to the manufacturers that provide exceptional products, service and support. Only one manufacturer has received this honor for sixteen consecutive years: Winnebago Industries®.

## Best in Class

See how Winnebago Industries takes motor home design and function to the next level, and why we've earned the right to be called the Most Recognized Name in Motor Homes.®

Click on this icon throughout the brochure to link to more information on the web.



**Outdoor Fun** Add the *Exterior Entertainment Center* to enjoy AM/FM stereo, DVD player and 32" LCD TV under the electric awning.



**Night and Day** The smoothly retracting *MCD American Duo Solar/Blackout Roller Shades* let you control your light and privacy with fingertip control—no matter the time of day.



**Easy** Important gauges, switches and controls are all centrally located in the *OnePlace® Systems Center* for ease of use.



**Residential Comfort** The *BIG Shower* is one of the industry's largest with a generous opening and plenty of elbow room (40U, 42E).




**HD Everywhere** Watch HD video from multiple sources, on multiple TVs—simultaneously—with the *HDMI 4X4 Matrix Video Selection System*.



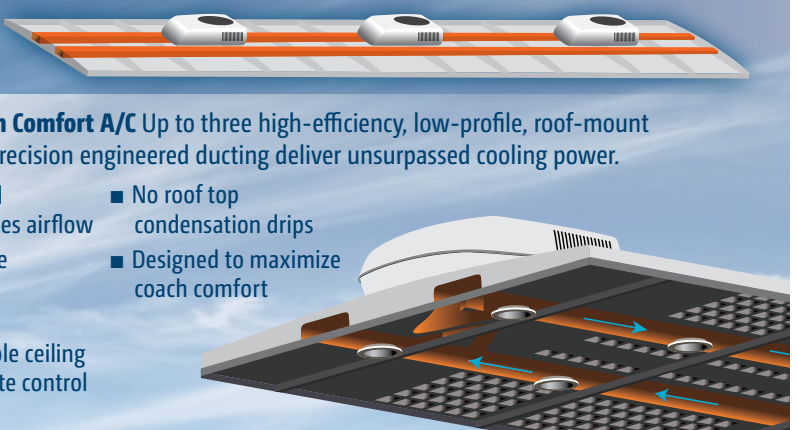
**Multi-Comfort** The *Rest Easy® Extendable Sectional Sofa* glides from a couch to a recliner to a comfortable bed at the press of a button (40U, 42E).

# TRUEAIR®



**TrueAir® Maximum Comfort A/C** Up to three high-efficiency, low-profile, roof-mount cooling units and precision engineered ducting deliver unsurpassed cooling power.

- D-shaped, formed ductwork optimizes airflow
- Dual or triple-zone thermostats offer precision cooling
- Infinitely adjustable ceiling vents provide finite control
- No roof top condensation drips
- Designed to maximize coach comfort





42E Lancaster with Coffee-Glazed Vienna Maple Cabinetry

While the stunning Ultraleather extendable sectional sofa may grab your immediate attention, the elegant touches such as tray ceiling trim and crown molding will capture your heart. Settle in and enjoy a movie on Blu-Ray® or just cuddle up in the Ultraleather Euro recliner with built-in footrest in front of the available electric fireplace in the 40U and 42E. And when the heat is bearing down outside, take comfort inside your Journey with the incomparable TrueAir Maximum Comfort air conditioning.



Euro Recliner



Powered Front Shades



42E Galley



Available French Door Refrigerator

There is no limit to your culinary creations in a galley that features solid-surface Corian countertops and a versatile microwave/convection oven. A four-door refrigerator/freezer comes standard or select the residential stainless steel French door refrigerator/freezer for top-of-the-line cold storage. Storage is abundant with large drawers with full-extension slides and a generous pantry with pullout shelving in the 42E.



42E Pantry



Full-Extension Drawer Slides



42E Dining Table/Buffer

Enjoy finely prepared cuisine in an equally exquisite setting with the extendable dining table with buffet that expands to seat four. The 36M also offers the option of an extendable sectional dinette with soft Ultraleather for a plush, comfortable dining experience.



42E Powered Bed



42E Available Washer and Dryer

Dial in your precise firmness level on the Ideal Rest® Natural Reserve digital comfort control mattress. It features natural cotton and bamboo fibers and a duo-firmness insert for a perfect night's sleep. It comes standard in the 42E and is available in all other floorplans. The 42E provides the luxury of a private master bath with the BIG Shower, while all floorplans include abundant storage in a large wardrobe and chest of drawers.



42E Master Bathroom



42E Guest Bath



Dash

The smooth ride of the Maxum Chassis is fully realized in the plush Ultraleather power cab seats. The exclusive **+Lounger** passenger seat is also available with a built-in workstation and reclines when you are parked. For total command of your surroundings, select the Infotainment Center/GPS. It features a large touch screen with AM/FM, CD player, compass, outside temperature, rearview and sideview monitors, and GPS voice guidance to keep you on the right path.



Available +Lounger with Workstation



Infotainment Center/GPS



Power Mirrors



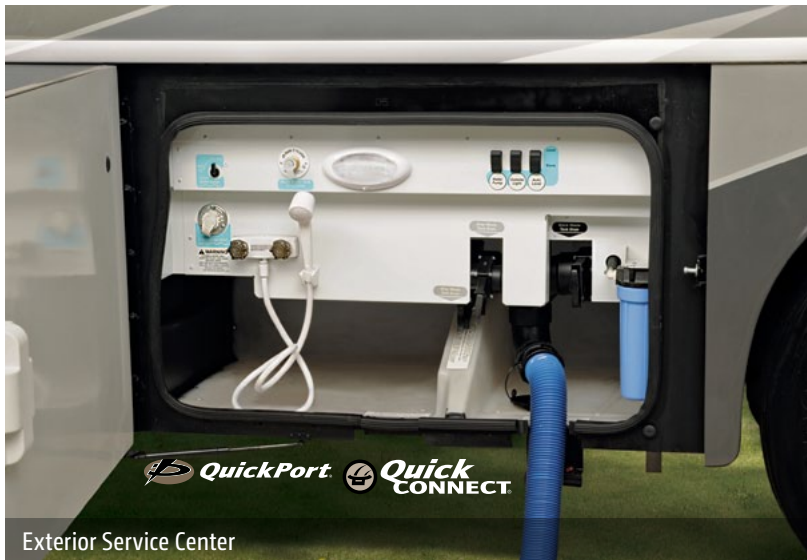


Powered Patio Awning



Sliding Storage Tray

The massive storage bays of the Maxum Chassis let you bring more on your travels than you ever thought possible. Add the sliding storage tray and you'll access it all with ease from both sides of the coach. From the color-coded service center to a powered patio awning with wind sensor, everything about the Journey is designed to make setting up at your destination quick and easy.



Exterior Service Center



Stylized Aluminum Wheels

**Fiberglass Roof** The crowned, one-piece fiberglass roof is backed by a 10-year parts-and-labor roof skin warranty.

**Thermo-Panel® Sidewalls** By layering fiberglass and high-density block foam insulation with welded aluminum support structures, we create some of the industry's strongest, most durable and lightweight sidewalls.

**E-Coating** An electrodeposition coating helps protect critical steel components.

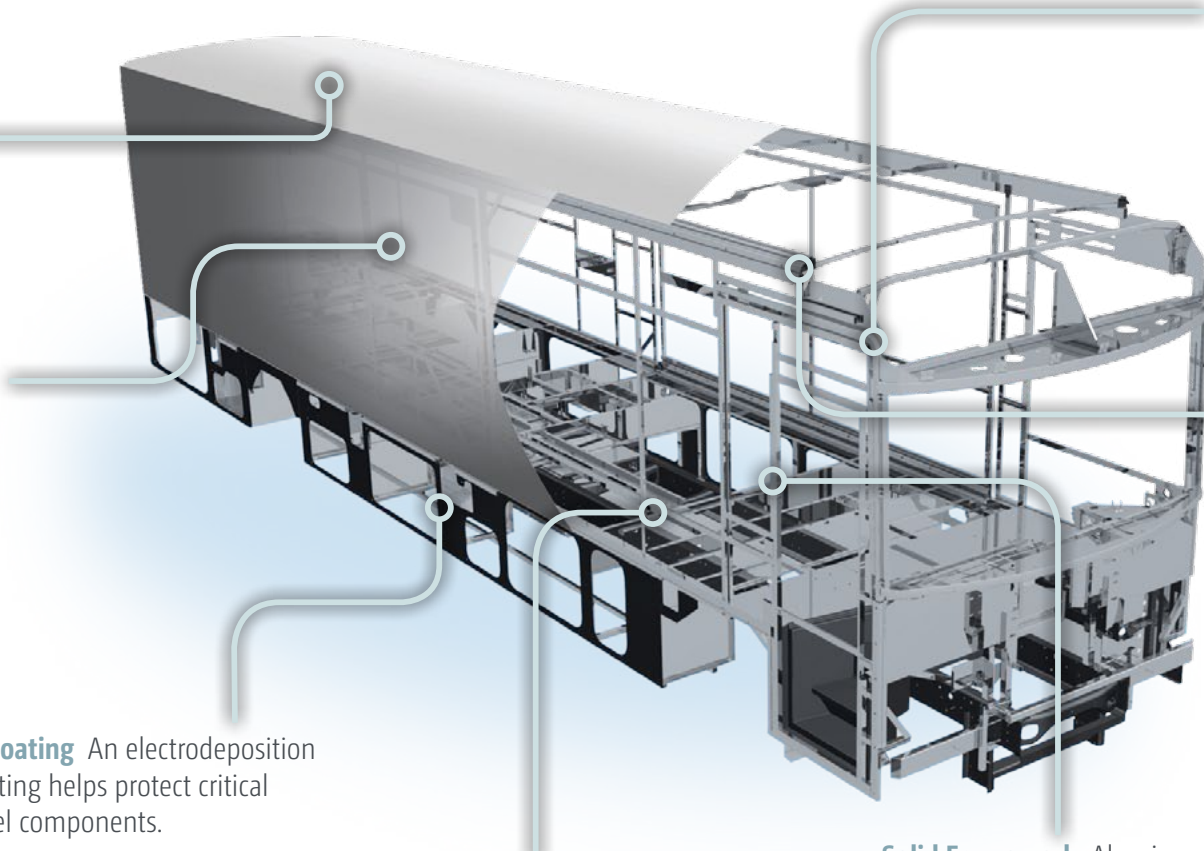
**Embedded Steel** Metal substructures embedded into the sidewall provide solid attachment points to keep cabinets and appliances mounted securely in place.

**Solid Framework** Aluminum extruded in our own facility to our exacting standards creates an extremely strong and solid structural framework.

**Laser-Cut Tubing** Precision laser cutters create precise joints in structural steel that are stronger and require less welding.



**Interlocking Joints** Specially engineered interlocking joints connect the floor, sidewalls and roof where competitors often rely on simple screws to bear the weight.

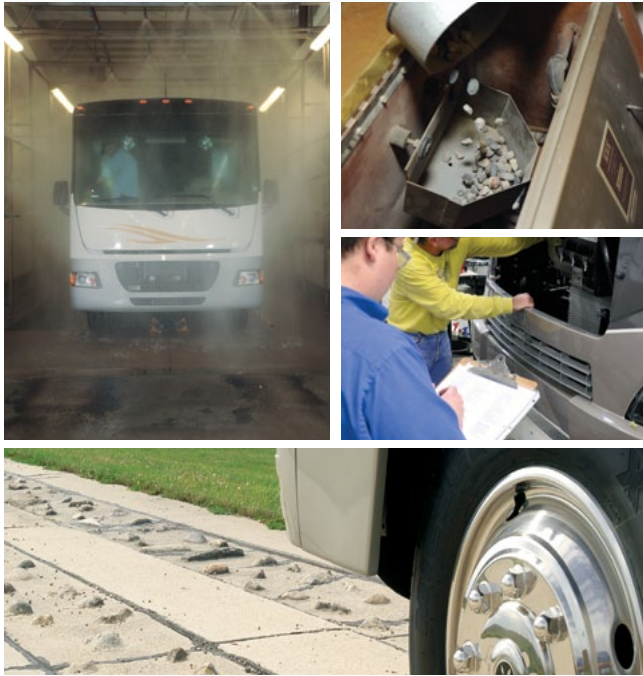


**SUPER  
STRUCTURE**

BUILT TO LAST

Every Journey is built to Winnebago Industries'® legendary SuperStructure construction standards. It's a process developed and refined over more than 50 years of building some of the strongest, most durable coaches in the industry.

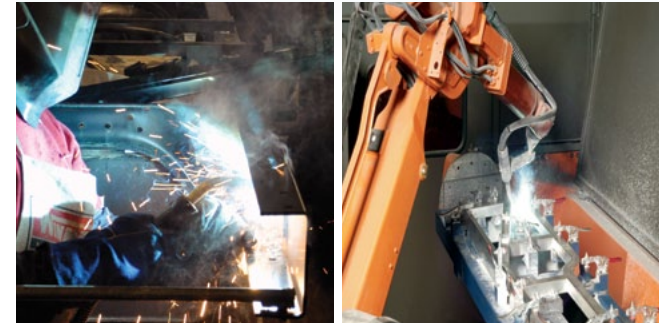
**TESTING** Before rolling out of our factories, every coach undergoes an extensive 113-point inspection. Each coach also passes a high-pressure water test that simulates rain at a rate of 50-inches per hour to check for leaks. During the design process, computer simulations, our physical testing center and rigorous test track ensure each model is built to last.



**DETAILS** At Winnebago Industries, we treat the features you can't see with the same care as the ones you can. Look in the access panels of some of our competitors' coaches and you'll see loose insulation and wires haphazardly strewn about. Winnebago Industries maintains a clean fit and finish throughout so your coach will last for the long haul.



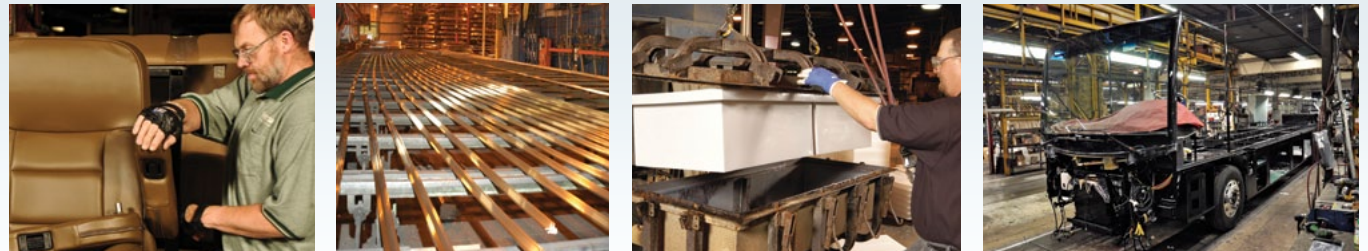
**BUILT IN-HOUSE** We extrude our own aluminum. We rotocast our own plastic components. In fact, we manufacture most of our own parts so they are designed to fit the space, rather than fitting the space to an awkward off-the-shelf component size.



**SUPER  
STRUCTURE**  
BUILT TO LAST

**W** Visit [BetterBuiltRVs.com](http://BetterBuiltRVs.com) to gain real insight into what goes into a Winnebago Industries motor home.

**TAKE A TOUR** We're proud of our processes, state-of-the-art facilities and the people who make Winnebago Industries number one. We invite you to visit our complex in Forest City, Iowa, for a first-hand look at the dedication and technology behind every motor home we build.



3-point engine mounting reduces engine vibration.

Engine brake uses the engine to slow the coach, promoting longer brake life.

Allison® 3000 MH 6-speed automatic transmission includes a touchpad control for ease of use (Allison 2500 MH on 34B).

Rear axle incorporates proprietary gear machining for a smoother, quieter ride.

NeWay® rear air suspension provides superior ride and handling.

The lowered-rail design moves intrusive rails from storage areas, creating up to 246 cubic feet of storage.

Taller, 23.25" pass-through storage height accommodates bulky items compared to 19.5" similar raised-rail and 17" on a typical raised-rail.

Extra space in critical areas allows for more pass-through storage.

55° wheel cut provides a tighter turning radius and better maneuvering.

Color-coded air lines make service easy.

10,000-pound trailer hitch® (34B, 36M, 40U)

15,000-pound trailer hitch® (42E)

"Clean Air Diesel" Cummins® engine delivers hill-climbing power when you need it most:

- Cummins ISB 6.7L 340-hp (34B)
- Cummins ISB XT 6.7L 360-hp (36M)
- Cummins ISC 8.3L 380-hp (40U)
- Cummins ISL 8.9L 400-hp (42E)

Low frame rails create a lower center of gravity improving stability.

Winnebago Industries' SuperStructure integrated with the lowered-rail design creates a chassis that is seven times stronger than typical raised-rail chassis designs.

Dual-fill fuel tank.

# MAXUM<sup>®</sup> CHASSIS

## A True Work of Art

You may not be able to see the Freightliner® Maxum Chassis as you're driving through the Rockies or cruising the coast, but you'll know it's there. Its powerful Cummins turbo-charged diesel engine and Allison® transmission go to work so you don't have to sweat the peaks and valleys ahead.

Through a strong partnership with Freightliner,

the undisputed leader in diesel motor home chassis, we set a new standard for handling, ride and performance in diesel chassis design.

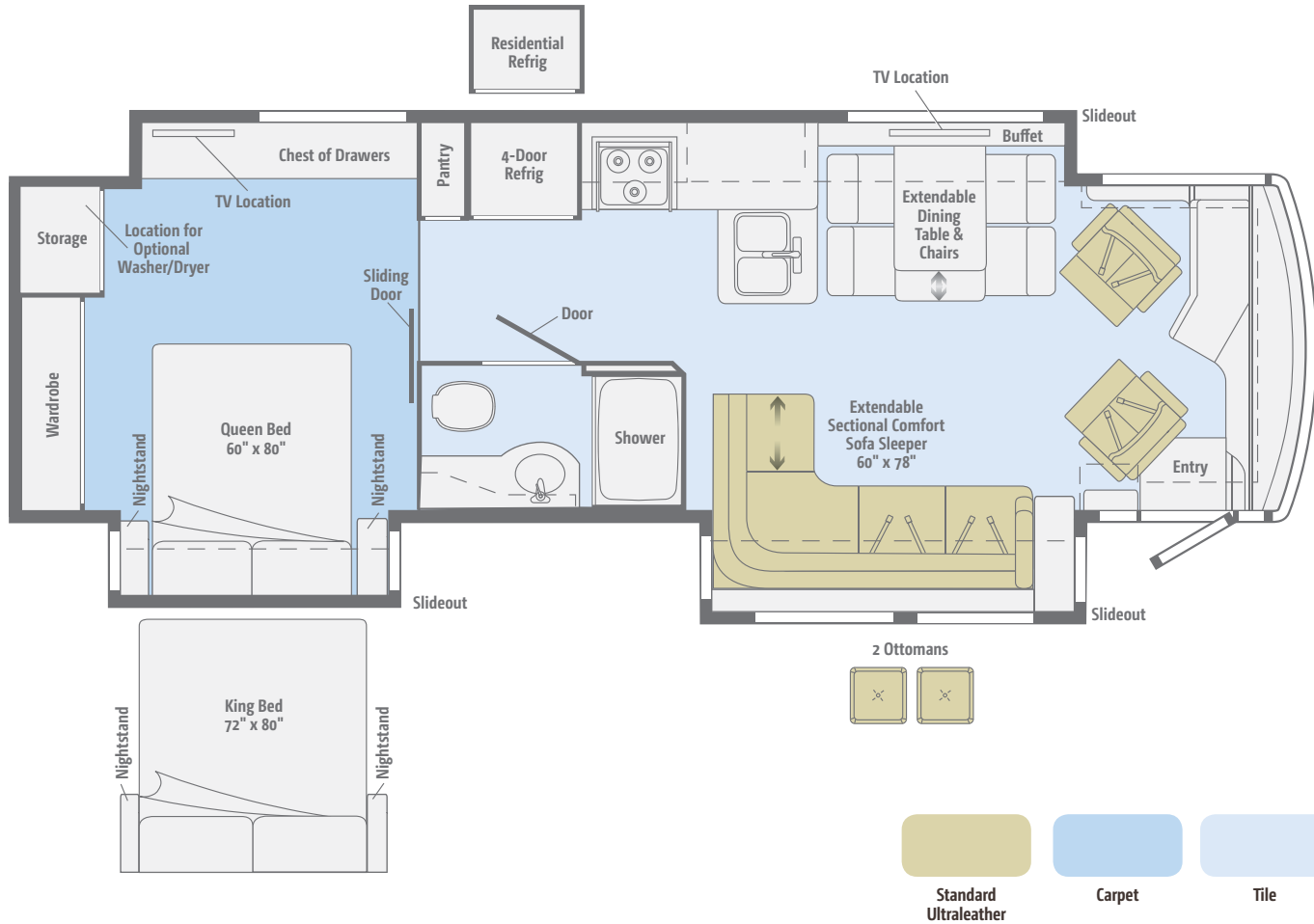
But performance doesn't mean sacrificing storage. The innovative lowered-rail design of the Maxum Chassis opens up a cavernous basement storage compartment, offering up to 246 cubic feet of storage.

4-wheel ABS anti-lock air brakes provide fast stopping power.

Michelin® tires and polished aluminum wheels look sharp.

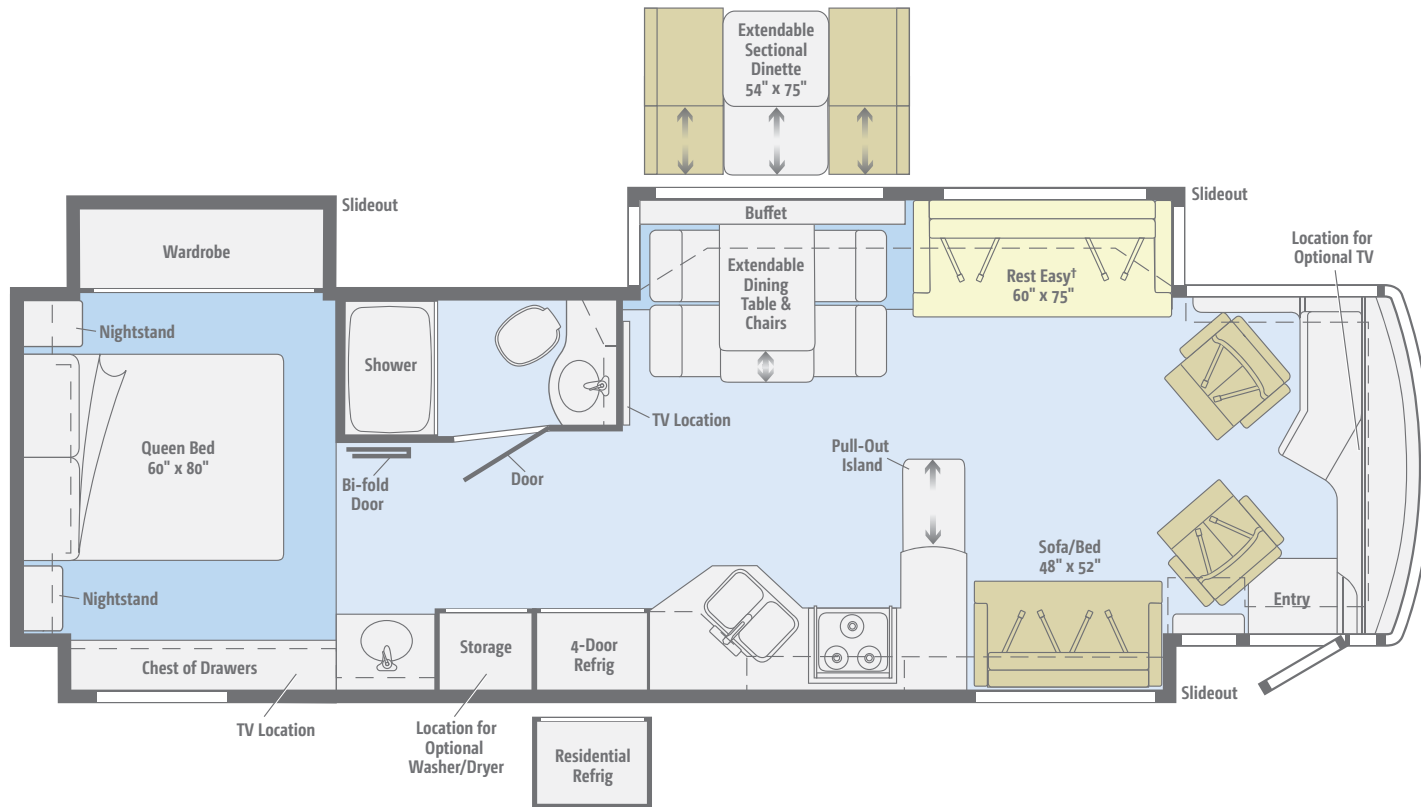
**NEW**  
**34B**

With an extendable dining table/buffet, the extendable sectional sofa and an available king bed, you'll find it easy to call the new 34B home.



Standard Ultraleather
  Carpet
  Tile

Dimensions shown are for sleeping space only and may vary due to styling differences. Dashed lines denote overhead storage areas. Floorplans and specifications are also available online at [GoWinnebago.com](http://GoWinnebago.com).

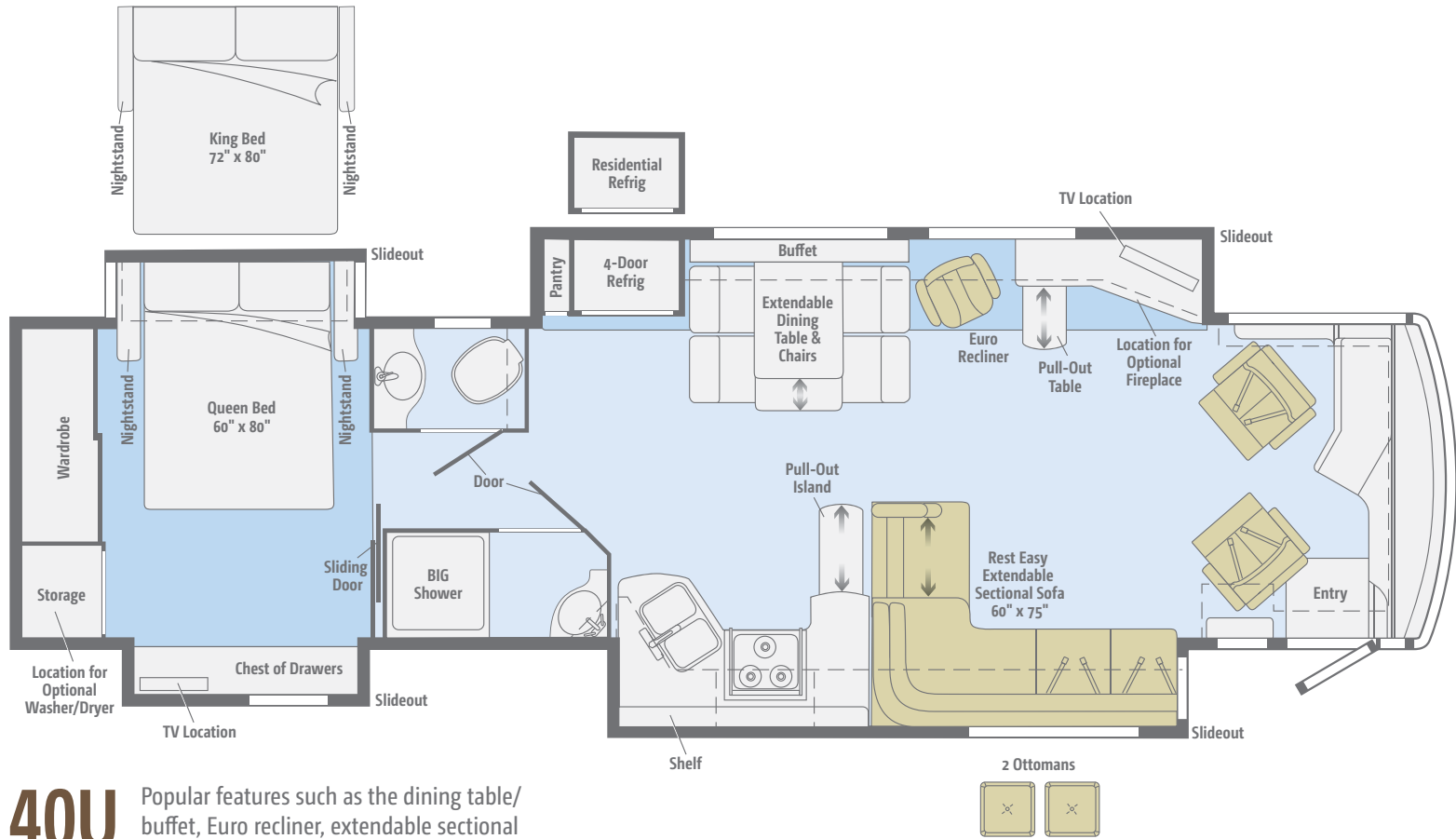


**36M** The full-wall slideout opens up a world of possibilities that includes opposing sofas, an impressive L-shaped galley and a walk-around queen bed.

|                          |                          |        |      |
|--------------------------|--------------------------|--------|------|
|                          |                          |        |      |
| Standard<br>Ultraleather | Optional<br>Ultraleather | Carpet | Tile |

Dimensions shown are for sleeping space only and may vary due to styling differences. Dashed lines denote overhead storage areas. Floorplans and specifications are also available online at [GoWinnebago.com](http://GoWinnebago.com).

† Available with single or dual controls. Dual-control option includes only two seat belts.



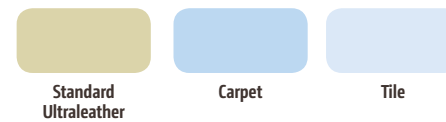
**40U** Popular features such as the dining table/ buffet, Euro recliner, extendable sectional sofa and the BIG Shower make the 40U one of our most popular floorplans.

|                          |        |      |
|--------------------------|--------|------|
|                          |        |      |
| Standard<br>Ultraleather | Carpet | Tile |

Dimensions shown are for sleeping space only and may vary due to styling differences. Dashed lines denote overhead storage areas. Floorplans and specifications are also available online at [GoWinnebago.com](http://GoWinnebago.com).



**42E** 42 feet of tag-axle luxury include a private master bathroom, guest bath, a giant wardrobe and an extendable sectional sofa.



Dimensions shown are for sleeping space only and may vary due to styling differences. Dashed lines denote overhead storage areas. Floorplans and specifications are also available online at [GoWinnebago.com](http://GoWinnebago.com).



Choose from three fabric collections and three cabinet wood choices with hidden hinges.

**Travertine**



Main



Surfside Ultraleather



Accent



Bedsread



Vinyl Tile - 34B Only



12" x 12" Porcelain Tile



Carpet



Cottage Lane Corian  
Countertop



Waldorf Sierra Wall Board



Honey Cherry



Forest Cherry



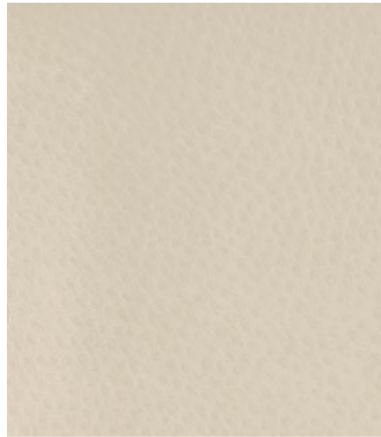
Coffee-Glazed  
Vienna Maple

Choose from three fabric collections and three cabinet wood choices with hidden hinges.

**Lancaster**



Main



Stucco Ultraleather



Accent



Bedspread



Vinyl Tile - 34B Only



12" x 12" Porcelain Tile



Carpet



Fossil Corian  
Countertop



Expo Truffle Wall Board



Honey Cherry



Forest Cherry



Coffee-Glazed  
Vienna Maple

*Fabrics and carpets may change without notice or obligation.*

Choose from three fabric collections and three cabinet wood choices with hidden hinges.

### Mountain Ash



Main



Parchment Ultraleather



Accent



Bedspread



Vinyl Tile - 34B Only



12" x 12" Porcelain Tile



Carpet



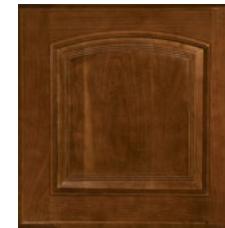
Cottage Lane Corian  
Countertop



Monroe Pecan Wall Board



Honey Cherry



Forest Cherry



Coffee-Glazed  
Vienna Maple

Choose from six striking full-body paint options with a premier automotive clearcoat finish that brings more depth and shine to your Journey.



**Harvest Night**  
FULL-BODY PAINT



**Autumn Gold**  
FULL-BODY PAINT

Choose from six striking full-body paint options with a premier automotive clearcoat finish that brings more depth and shine to your Journey.



**Inferno**  
FULL-BODY PAINT



**Platinum**  
FULL-BODY PAINT

Choose from six striking full-body paint options with a premier automotive clearcoat finish that brings more depth and shine to your Journey.



**Sequoia**  
FULL-BODY PAINT



**Sierra Ridge**  
FULL-BODY PAINT



## Weights & Measures

|  | 34B    | 36M    | 40U    | 42E        |
|--|--------|--------|--------|------------|
| Length   | 35'7"  | 37'3"  | 41'3"  | 43'6"      |
| Exterior Height <sup>1</sup>                           | 12'10" | 12'10" | 12'10" | 12'11"     |
| Exterior Width <sup>2</sup>                            | 8'5.5" | 8'5.5" | 8'5.5" | 8'5.5"     |
| Exterior Storage <sup>3</sup> (cu. ft.)                | 161    | 183    | 246    | 229        |
| Awning Length  | 16'    | 20'    | 14'6"  | 20'        |
| Interior Height  | 7'     | 7'     | 7'     | 7'         |
| Interior Width   | 8'0.5" | 8'0.5" | 8'0.5" | 8'0.5"     |
| Freshwater Capacity w/Heater <sup>4</sup> (gal.)       | 95     | 95     | 95     | 95         |
| Holding Tank Capacity - Black/Gray <sup>4</sup> (gal.) | 46/61  | 46/61  | 64/95  | 71/109     |
| LP Capacity <sup>5</sup> (gal.)                        | 28     | 28     | 28     | 28         |
| Fuel Capacity (gal.)                                   | 100    | 100    | 100    | 100        |
| GCWR <sup>6</sup> (lbs.)                               | 33,000 | 42,350 | 44,320 | 59,320     |
| GVWR (lbs.)  | 29,410 | 32,350 | 34,320 | 44,320     |
| GAWR - Front (lbs.)                                    | 10,410 | 12,350 | 14,320 | 14,320     |
| GAWR - Rear (lbs.)                                     | 19,000 | 20,000 | 20,000 | 30,000     |
| Wheelbase  | 208"   | 228"   | 276"   | 279" + tag |

## Chassis

Maxum® Freightliner® Chassis 340-hp Cummins® ISB 6.7L turbo-charged engine (34B)

Maxum Freightliner Chassis 360-hp Cummins ISB XT 6.7L turbo-charged diesel engine (36M)

Maxum Freightliner Chassis 380-hp Cummins ISC 8.3L turbo-charged diesel engine (40U)

Tag-axle Maxum Freightliner Chassis 400-hp Cummins ISL 8.9L turbo-charged diesel engine (42E)

Allison® 6-speed automatic 2500 MH transmission (34B)

Allison 6-speed automatic 3000 MH transmission (36M, 40U, 42E)

Information display center

Rear radiator

NeWay® front and rear air suspension

160-amp. alternator

Air brakes w/ABS

Engine exhaust brake

Quick-connect air connection w/manual shut off

Automatic hydraulic leveling jacks

7-pin trailer wiring

Trailer Hitch® 10,000-lb. drawbar/500-lb. maximum vertical tongue weight (34B, 36M, 40U)

Trailer Hitch® 15,000-lb. drawbar/1,500-lb. maximum vertical tongue weight (42E)

Stylized aluminum wheels

## Cab Conveniences

Cab Seats adjustable armrests, lumbar support and multi-adjustable slide/recline/swivel

Power driver seat

Power passenger seat

Passenger seat w/footrest

RV Radio®/Rearview Monitor System 6.5" LCD touch screen, CD player, weather band, remotes, iPod®/MP3 input, rearview color camera and sideview camera system

Cruise control

12-volt powerpoints

Powered stepwell cover

Powered MCD American Duo® solar/blackout roller shades (front windshield)

Defroster fans

MCD American Duo solar/blackout roller shades (driver and passenger windows)

Chassis/house battery radio power switch

Power mirrors w/defrost, turn signal indicator, and sideview camera

TRW® tilt/telescopic steering column w/foot actuated pedal

Map lights

Power door lock w/remotes

C.B. wire prep

### OPTIONAL EQUIPMENT

Infotainment Center/GPS 7" touch screen monitor w/split screen function, passenger-side monitor, turn-by-turn voice guidance, rear and sideview cameras, compass, outside temperature, Bluetooth™, AM/FM/CD/DVD player, remotes, iPod interface connector, USB connection, Sirius® satellite ready

Sirius Satellite Radio iPod interface connector

+Lounger passenger cab seat w/flip-up workstation

## Interior

Dining table/buffet w/40" retractable LCD TV (34B)

40" LCD TV (mid-coach) (36M, 40U, 42E)

Blu-Ray® home theater system

Satellite system ready

Digital TV amplified antenna system

HDMI Matrix central video selection system

Key-activated slideroom master lock switch

MCD American Duo solar/blackout roller shades (lounge, dinette and bedroom)

Soft vinyl ceiling

Accent rope lighting

OnePlace® systems center

Tinted dual-glazed/thermo-insulated/flush-mounted coach windows

Powered ventilator fan (galley, bath)

### OPTIONAL EQUIPMENT

Stackable washer and dryer

Electric fireplace (40U, 42E)

King-Dome® HD-ready in-motion satellite dish

King-Dome automatic satellite dish w/dual LNB

Winegard® Trav'ler® automatic multi-satellite antenna

40" LCD TV (front overhead) (36M)

Polished porcelain tile flooring (bedroom) (42E)

## Galley

Corian® countertops

4-door refrigerator/freezer w/icemaker

Microwave/convection oven w/vented range fan

3-burner range top w/storage below

Corian range and sink covers

Cold water filtration system

### OPTIONAL EQUIPMENT

3-burner range w/oven

Residential stainless steel French door refrigerator w/water/ice dispenser and bottom freezer drawer (w/2,800-watt inverter and 2 additional 12-volt coach batteries)

## Bath

Corian countertop and backsplash

Flexible showerhead

Textured glass shower door

Skylight

Porcelain toilet

Area Rug (42E)

## Bedroom

26" LCD TV (42E)

32" LCD TV (34B, 36M, 40U)

Queen bed w/innerspring mattress (34B, 36M, 40U)

Powered queen bed w/Ideal Rest® Natural Reserve digital comfort control mattress w/remotes (42E)

Bedspread, pillows, and pillow shams

### OPTIONAL EQUIPMENT

King Ideal Rest Natural Reserve digital comfort control mattress w/remotes (34B, 40U)

Queen Ideal Rest Natural Reserve digital comfort control mattress w/remotes (34B, 36M, 40U)

Powered king bed w/Ideal Rest Natural Reserve digital comfort control mattress w/remotes (42E)

King bed w/innerspring mattress (34B, 40U)

Ceiling fan

## Exterior

Powered patio awning w/wind sensor

KeyOne® lock system

Porch lights

Powered entrance awning

Lighted storage compartments

Driver's side docking/service light

Lighted stepwell

Storage containers w/lids (4)

Movable/removable flooring panels in main storage bay

Automatic entrance steps

Auxiliary side lamps

Ladder

Rear mud flaps

Full-width mudguard

Lower front protective mask

Premier clearcoat automotive finish

### OPTIONAL EQUIPMENT

Entertainment Center 32" LCD TV

Slideout storage compartment tray

## Heating & Cooling System

TrueAir® Maximum Comfort A/C, 13,500 BTU (2 cooling units 34B, 36M; 3 cooling units 40U, 42E)

A/C heat pumps

Two 20,000 BTU ducted furnaces (34B, 36M)

One 20,000 BTU ducted furnace and one 25,000 BTU ducted furnace (40U, 42E)

Dual-zone thermostat (34B, 36M)

Triple-zone thermostat (40U, 42E)

## Electrical System

Service Center lighted, cable input, 50-amp. power cord, QuickPort® shoreline/generator automatic changeover switch, portable satellite hookup

2,000-watt inverter/charger w/remote panel (2,800-watt w/optional French door refrigerator)

8,000-watt Cummins Onan® Quiet Diesel™ generator

Cummins Onan Energy Command™ automatic generator start system

Auxiliary start circuit

AC/DC electrical distribution system

4 Deep-cycle Group 31 marine/RV AGM batteries (6 batteries w/optional French door refrigerator)

Battery disconnect system (coach and chassis)

Powerline® Energy Management System

Automatic dual-battery charge control

Chassis battery charger/maintainer

Exterior TV jack and AC duplex

## Plumbing System

Service Center pressurized city water hookup w/diverter fill, fresh water drain, drainage valves, exterior wash station w/pump switch, holding-tank flushing system, 20' sewer hose, QuickPort, QuickConnect®, lights

On-demand water pump

10-gallon water heater 110V/LP gas w/motoraid

TrueLevel™ holding-tank monitoring system

Winterization Package water heater bypass valve and siphon tube

Full-coach water filtration system

LP tank w/gauge

LPG accessory connection (patio area)

Heated holding-tank compartment

## Safety

Seat belts

LP, smoke and carbon monoxide detectors

10 BC fire extinguisher

Ground fault interrupter

Fog lamps

High-mount brake lamps

## Warranty<sup>7</sup>

12-month/15,000-mile basic warranty<sup>8</sup>

36-month/36,000-mile limited warranty on structure<sup>8</sup>

10-year limited parts-and-labor warranty on roof skin<sup>8</sup>

- The height of each model is measured to the top of the tallest standard feature and is based on the curb weight of a typically equipped unit. The actual height of your vehicle may vary by several inches depending on chassis or equipment variations. Please contact your dealer for further information.
- Journey floorplans feature a wide-body design – over 96" In making your purchase decision, you should be aware that some states restrict access on some or all state roads to 96" in body width. Before making your purchase decision, you should confirm the road usage laws in the states of interest to you.
- The load capacity of your motor home is designated by weight, not by volume, so you cannot necessarily use all available space when loading your motor home.
- Capacities are based on measurements prior to tank installation. Slight capacity variations can result due to installation applications.
- Capacities shown are tank manufacturer's listed water capacity (W.C.). Actual filled LP capacity is 80% of listing due to overfilling prevention device on tank.
- Actual towing capacity is dependent on your particular loading and towing circumstances, which includes the GVWR, GAWR, and GCWR, as well as adequate trailer brakes. Please refer to the Operator's Manual of your vehicle for further towing information.
- See separate chassis warranty.
- See your dealer for complete warranty information.

NA Not Available

Not all items available in combination. See dealer for details.

Winnebago Industries® continuing program of product improvement makes specifications, equipment, model availability, and prices subject to change without notice. Comparisons to other motorhomes are based on the most recent information available at printing.



# GoWinnebago.com Has Gone Mobile

Learn more about the 2013 Journey on your computer, smartphone or tablet. Visit [GoWinnebago.com/Journey](http://GoWinnebago.com/Journey) for the complete Journey experience.



# PREFERRED CARE PROGRAM

We back our motor homes with best-in-class support both before *and* after the sale:

- 12-month/15,000-mile basic limited warranty
- 36-month/36,000-mile warranty on structure
- 10-year standard limited parts-and-labor roof skin warranty
- Complimentary 24-hour roadside assistance program



**TRIP**Saver  
FAST TRACK PARTS

- TripSaver® Fast Track Parts guarantees that in-stock warranty parts ship directly to your dealer within 24 hours
- National dealer service network

## Join the Club, Join the Fun

As a Winnebago motor home owner, you are invited to join the WIT Club. It's a great way to take full advantage of your new coach and meet fun-loving WIT Club members from across the country who make motor home adventures a way of life.



### Members enjoy:

- Caravans and rallies
- Newsletters
- Local and state group activities
- RV travel benefits

See more on [WITclub.com](http://WITclub.com)



### Grand National Rally

Each year, thousands of Winnebago Industries motor home owners descend upon Forest City, Iowa, for the Grand National Rally. Rally goers connect with old friends and enjoy concerts, tours, activities and more in a weeklong celebration of the motor home lifestyle. Join us in July for a week you'll never forget.

