



# 2010 Thoroughbred Ultra-Lite Travel Trailers & Fifth Wheels DISCOVER A NEW WORLD



*Thoroughbred Travel Trailers & Fifth Wheels*



# Palomino

*Thoroughbred* Ultra-Lite

Sleek, strong, and graceful describes this Thoroughbred line of exceptional lightweight travel trailers. Their aerodynamic design, strong aluminum superstructure, and easy handling and towing characteristics make these units remarkably road worthy for families on the go. The spacious interiors are fully furnished for comfort and convenience.

Sleek, strong,  
and **graceful.**



T-281 (burgundy decor)

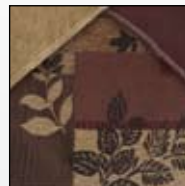






T-291 FBS (burgundy decor)

## DECOR OPTIONS



Burgundy



Blue



Green



Espresso

## FEATURES



Crowned Roof



AM/FM CD Player



Entry Step



## TRAVEL TRAILERS STANDARDS AND OPTIONS

### STANDARDS

- 14" Radial Tires
- 20,000 BTU Suburban Furnace
- 55 AMP Converter with Battery Charger
- A & E Awning
- Aluminum Framed Superstructure
- B.A.L. Jacks with Sand Pads (4)
- Create-A-Breeze™ Fan (Mandatory Option)
- Dometic® Double Door Refrigerator – 6 Cu.Ft.
- Double Entry Step
- Electric Slide-Out System
- EPDM Rubber Roof
- Exterior Fiberglass Surface
- I-Beam Frame (E-Coat)
- Outside Marine Grade Speakers
- Outside Service Lights (3)

- Outside Shower
- Oversized Bathroom Skylight
- Patio Light
- Roof Air Ready — Ducted
- Six Gallon Gas/Elec. DSI Water Heater
- Spare Tire, Bracket and Molded Cover
- Stove Cover
- Tinted Safety Glass Windows
- Torsion Axle, Independent Suspension
- Tub/Shower Surround
- TV Antenna/Cable/Sat.
- Two – 20 Lb. LP Gas Bottles with Molded Cover
- Vacuum Bonded Laminated Construction
- Full Extension Drawer Guides

### OPTIONS

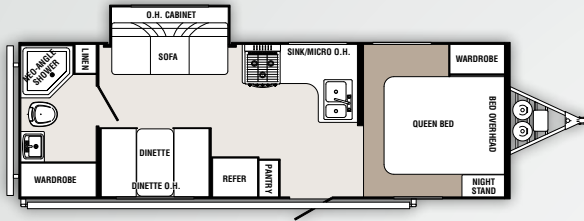
- Air Conditioner (13,500 BTU)\*
- Air Conditioner (Low Profile 13,500 BTU)
- Aluminum Wheels
- Counter Top Extension
- Create-A-Breeze™ Fan (Mandatory Option)
- Diamond Plate Front\*
- DVD Player with Theater Sound
- DVD Player with Theater Sound and LCD TV
- M & T Raised Panel Cabinet Doors (Mandatory Option)\*
- Microwave\*
- Outside Gas Grill\*
- Raised Refer Door Upgrade (6 Panel)
- Roof Ladder
- Serta® Mattress Upgrade\*

- Slide Topper Awning
- Sliding A.B.S. Storage Tray
- Solar Panel (5-Watt)
- Three-Burner Range with Oven\*
- Water Purifier\*
- Outside Entertainment Center\*
- AM/FM CD/DVD Player\*
- Dometic® SMEV Appliances
- 22" High Def. LCD TV\*
- Electric Stabilizer Jacks

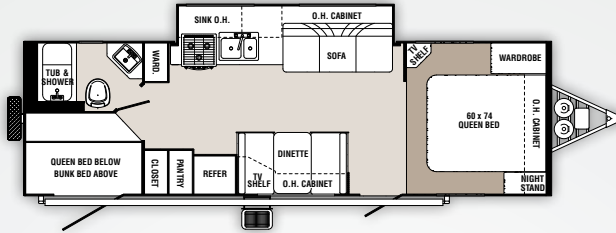
*\*Included in Travel Pack*

TRAVEL TRAILERS	T-245	T-26 FBS	T-26 BHSL	T-265	T-273	T-274	T-276	T-281	T-282	T-291
Hitch Dry Weight	858 lbs.	617 lbs.	479 lbs.	410 lbs.	384 lbs.	845 lbs.	845 lbs.	861 lbs.	744 lbs.	806 lbs.
Dry Axle Weight	3747 lbs.	4040 lbs.	3817 lbs.	4612 lbs.	4868 lbs.	4365 lbs.	4265 lbs.	4375 lbs.	4157 lbs.	4381 lbs.
Total Dry Weight	4605 lbs.	4657 lbs.	4296 lbs.	5022 lbs.	5252 lbs.	5210 lbs.	5110 lbs.	5236 lbs.	4901 lbs.	5187 lbs.
GVWR	7858 lbs.	7617 lbs.	6643 lbs.	7426 lbs.	7384 lbs.	7845 lbs.	7845 lbs.	7861 lbs.	7744 lbs.	7806 lbs.
Interior Height	6' 5"	6' 5"	6' 3"	6' 3"	6' 5"	6' 5"	6' 5"	6' 5"	6' 5"	6' 5"
Exterior Height	9' 3"	9' 3"	9' 3"	9' 3"	9' 3"	9' 3"	9' 3"	9' 3"	9' 3"	9' 3"
Exterior Width	8'	8'	8'	8'	8'	8'	8'	8'	8'	8'
Travel Length	29'	29' 4"	26' 9"	31' 2"	31' 2"	32' 8"	32' 8"	32' 8"	31'	32'
Fresh Water Capacity	32 Gal.	30 Gals.	30 Gals.	30 Gals.	30 Gals.	32 Gal.	32 Gal.	32 Gal.	32 Gal.	32 Gal.
Gray Water Capacity	77 Gal.	38 Gals.	38 Gals.	77 Gals.	77 Gals.	31 Gal.	31 Gal.	38 Gal.	115 Gal.	38 Gal.
Black Water Capacity	38 Gal.	31 Gals.	31 Gals.	31 Gals.	31 Gals.	31 Gal.	31 Gal.	38 Gal.	38 Gal.	38 Gal.

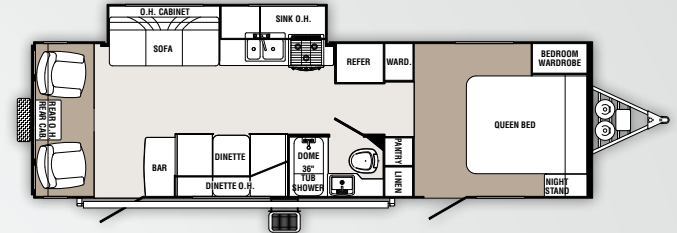




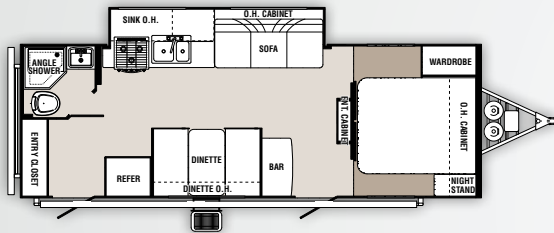
T-245



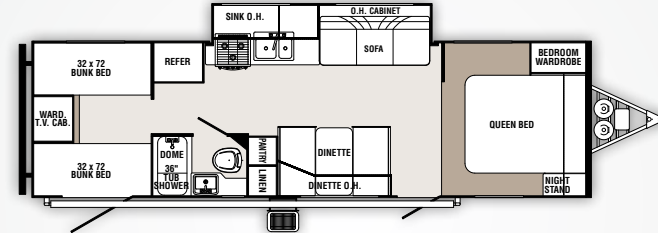
T-273



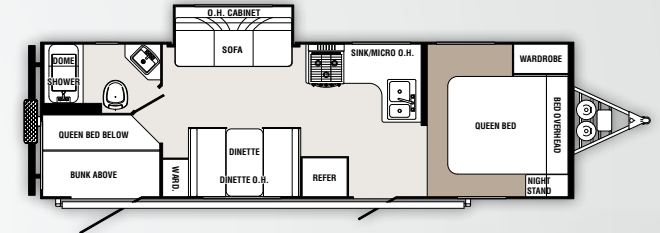
T-281



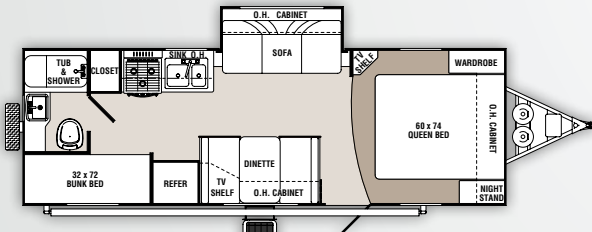
T-26 FBS



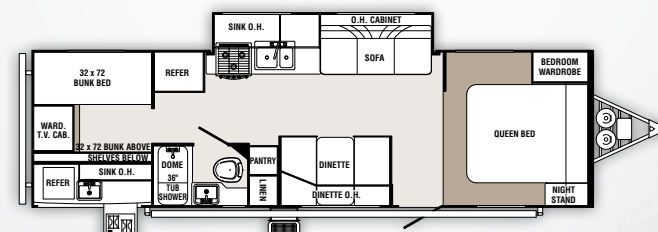
T-274



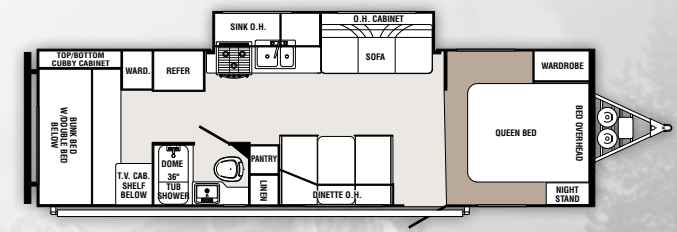
T-282



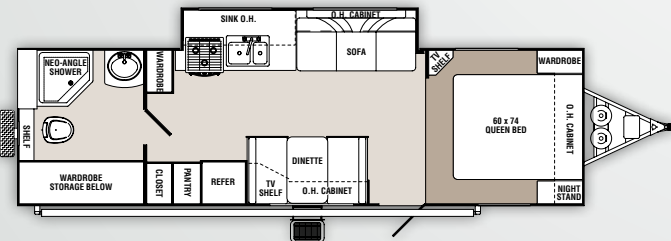
T-26 BHSL



T-276



T-291



T-265





# Palomino

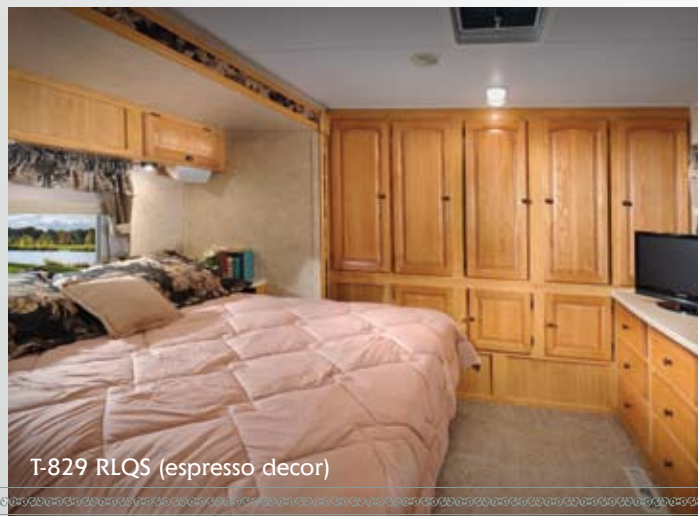
*Thoroughbred* Ultra-Lite

The Thoroughbred Elite and V-Series are the results of outstanding design innovation. The Elite takes RV living to the next level with wonderfully appointed interiors and residential styling that's both classic and extraordinary. Efficiently engineered, the V-Series utilizes the hitch area to create more living area and storage space. Its V-styling also provides better aerodynamics for more fuel-efficient towing and easier handling.

## Outstanding Innovation



T-829 RLQS (espresso decor)



T-829 RLQS (espresso decor)



T-829 FLS (green decor)





829 VRL (burgundy decor)



829 VRL (burgundy decor)



829 VRL (burgundy decor)

DECOR OPTIONS



Burgundy



Blue



Green



Espresso



## ELITE AND V-SERIES STANDARDS AND OPTIONS

### STANDARDS

- 15" Radial Tires
- 30,000 BTU Suburban Furnace
- Aluminum Framed Superstructure
- Bathroom Skylight
- CD/DVD/MP3 Player with 5.1 Dolby® Surround Sound with 26" LCD TV
- China Toilet
- 55 AMP Converter with Battery Charger
- Day/Night Shades
- Dometic® Double Door Refrigerator (6 Cu.Ft.)
- Ducted Roof Air Ready
- Electric Slide-Out System
- EPDM Rubber Roof
- Exterior Fiberglass Surface
- Folding Entry Assist Handle
- Free Standing Table with Chairs (Opt. on T-829 QBS and T-830 BHS)
- Heated Holding Tanks

- Hide-A-Bed Sofa (Opt. 829 QBS & 830 BHS)
- I-Beam Frame
- M & T Raised Panel Cabinet Doors
- Neo-Angle Shower (N/A on T-829 QBS and T-830 BHS)
- Outside Marine Grade Speakers
- Outside Service Lights (3)
- Outside Shower
- Pillow Shams
- Six Gallon Gas/Elec. DSI Water Heater
- Solarium Windows (Opt. T-829 QBS and T-830 BHS)
- Spare Tire and Bracket with Molded Cover
- Stove Cover
- Tinted Safety Glass Windows
- Torsion Axle, Independent Suspension
- Triple Entry Step
- Tub Surround (One Piece Tile Look)
- TV Antenna/Cable/Sat.

- Two — 30 Lb. LP Gas Bottles with Molded Cover
- Vacuum Bonded Laminated Construction
- Full Extension Drawer Guides
- Enclosed Underbelly

### OPTIONS

- A & E Electric Awning (Mandatory Option)\*
- Air Conditioner (13,500 BTU)\*
- Air Conditioner (Low Profile 13,500 BTU)
- Aluminum Wheels\*
- Counter Top Extension
- Create-A-Breeze™ Fan (Mandatory Option)
- Diamond Plate Front End

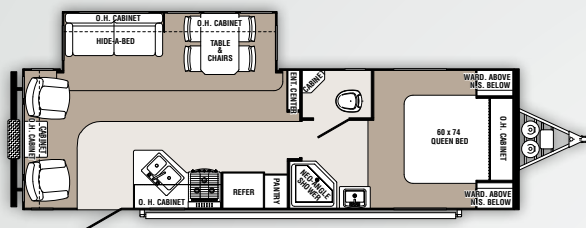
- Free Standing Table with Chairs (Opt. Only on T-829 QBS and T-830 BHS)
- La-Z-Boy® Rocker Recliner (Select Floorplans)
- Microwave\*
- Outside Gas Grill\*
- Raised Refer Door Upgrade (6 Panel)
- Roof Ladder
- Serta® Mattress Upgrade\*
- Slide Topper Awning
- Solar Panel (5-Watt) (Low Profile A/C Required)
- Super C-eater Sofa
- Three-Burner Range with Oven\*
- Water Purifier\*
- Outside Entertainment Center\*
- Electric Stabilizer Jacks

\*Included in Travel Pack

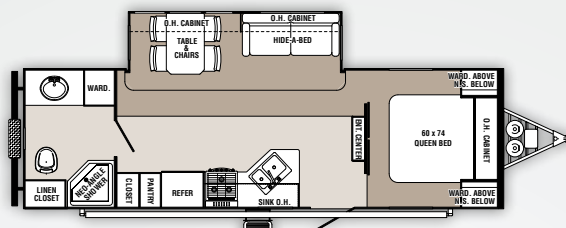
	ELITE							V-SERIES		
SPECIFICATIONS	T-828 RLQS	T-829 FLS	T-829 QBS	T-829 QBS-K	T-829 RBS	T-829 RLS	T-830 BHS	T-827 VRB	T-829 VRL	T-829 VFK
Hitch Dry Weight	782 lbs.	994 lbs.	627 lbs.	627 lbs.	501 lbs.	1206 lbs.	803 lbs.	955 lbs.	1090 lbs.	1317 lbs.
Dry Axle Weight	5528 lbs.	5477 lbs.	5644 lbs.	5544 lbs.	5455 lbs.	5589 lbs.	5346 lbs.	4731 lbs.	5716 lbs.	4873 lbs.
Total Dry Weight	6310 lbs.	6471 lbs.	6151 lbs.	6051 lbs.	5708 lbs.	6795 lbs.	6149 lbs.	5686 lbs.	6806 lbs.	6190 lbs.
GVWR	7782 lbs.	7994 lbs.	7627 lbs.	7627 lbs.	7501 lbs.	8206 lbs.	7803 lbs.	7955 lbs.	9090 lbs.	9317 lbs.
Interior Height	6' 5"	6' 5"	6' 5"	6' 5"	6' 5"	6' 5"	6' 5"	6' 5"	6' 5"	6' 5"
Exterior Height	9' 9"	9' 9"	9' 9"	9' 9"	9' 9"	9' 9"	9' 9"	9' 9"	9' 9"	9' 9"
Exterior Width	8'	8'	8'	8'	8'	8'	8'	8'	8'	8'
Travel Length	32' 5"	33' 6"	33' 5"	33' 5"	31' 9"	33' 6"	33' 5"	29' 6"	33' 1"	33'
Fresh Water Capacity	30 Gals.	32 Gals.	30 Gals.	30 Gals.	30 Gals.	32 Gal.	30 Gals.	30 Gals.	30 Gals.	30 Gals.
Gray Water Capacity	77 Gals.	38 Gals.	77 Gals.	77 Gals.	38 Gals.	77 Gal.	77 Gals.	56 Gals.	67 Gals.	77 Gals.
Black Water Capacity	38 Gals.	31 Gals.	38 Gals.	38 Gals.	38 Gals.	38 Gal.	38 Gals.	28 Gals.	28 Gals.	38 Gals.



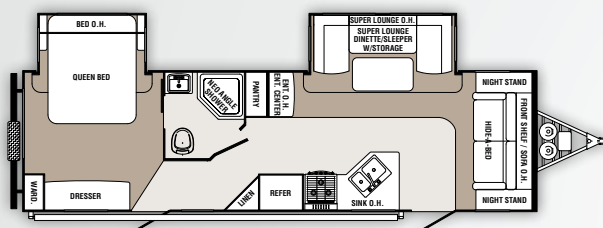
## ELITE FLOORPLANS



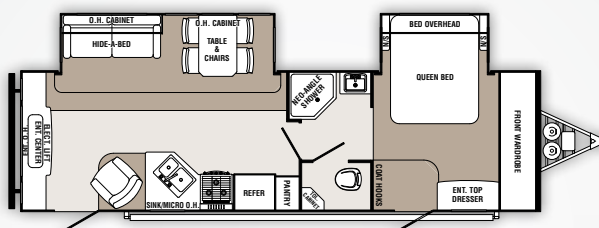
T-828 RLQS



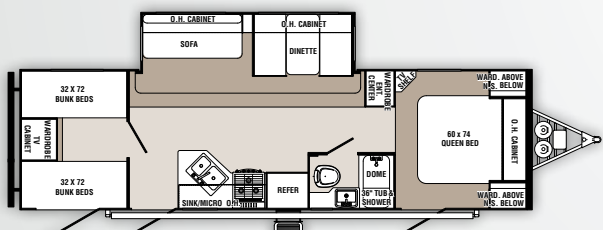
T-829 RBS



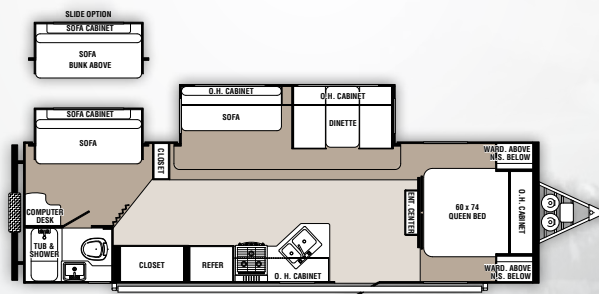
T-829 FLs



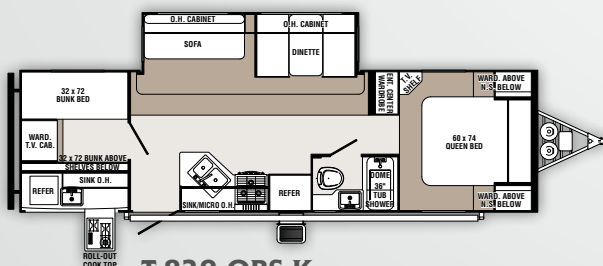
T-829 RLS



T-829 QBS



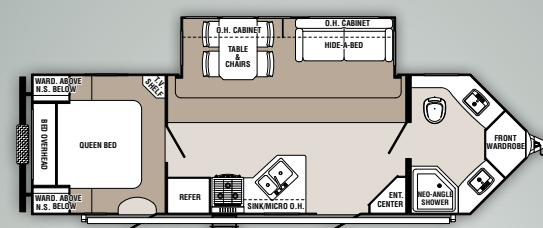
T-830 BHS



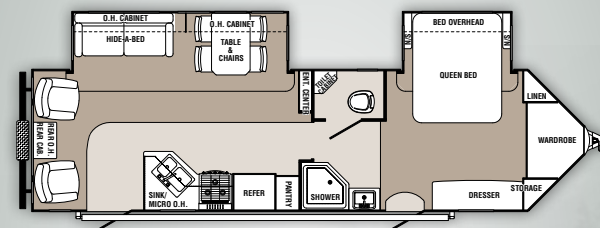
T-829 QBS-K



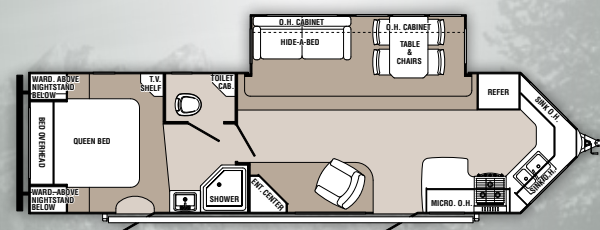
## V-SERIES FLOORPLANS



T-827 VRB



T-829 VRL



T-829 VFK





# Palomino

Thoroughbred Ultra-Lite

With an aluminum frame superstructure, Thoroughbred fifth wheels are both lightweight and exceptionally strong. This concept of more strength with less weight makes these units the perfect traveling companion. Inside you'll find lovely living quarters appointed with fine furnishings and great features. All this adds up to exceptional quality and outstanding value that will deliver years of fun and memories.

## Exceptional Quality.



F-829 RKSB (burgundy decor)



F-826 RL (burgundy decor)



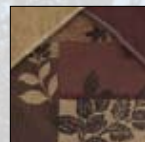
Neo-Angle Shower



Sofa Storage



### DECOR OPTIONS



Burgundy



Blue



Green



Espresso



Exterior Shower



Pass-Thru Storage



## FIFTH WHEEL STANDARDS AND OPTIONS

### STANDARDS

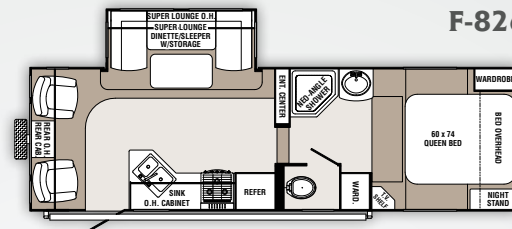
- 15" Radial Tires
- 26" LCD Flat Screen TV
- 30,000 BTU Suburban Furnace
- Aluminum Framed Superstructure
- Bathroom Skylight
- CD/DVD/MP3 Player with 5.1 Dolby® Surround Sound
- China Toilet
- 55 AMP Converter with Battery Charger
- Day/Night Shades
- Dometic® Double Door Refrigerator (6 Cu.Ft.)
- Ducted Roof Air Ready
- Electric Slide-Out System
- EPDM Rubber Roof
- Exterior Fiberglass Surface
- Folding Entry Assist Handle
- Free Standing Table with Chairs (Opt. on F-829 RL, F-829 BH and F-829 BHSB)
- Heated Holding Tanks
- Hide-A-Bed Sofa (Opt. on F-829 RL, F-829 BH and F-829 BHSB)
- I-Beam Frame
- M & T Raised Panel Cabinet Doors
- Neo-Angle Shower
- Outside Marine Grade Speakers
- Outside Service Lights (3)
- Outside Shower
- Patio Light and (2) Scare Lights
- Pillow Shams
- Six Gallon Gas/Elec. DSI Water Heater
- Solarium Windows (Opt. on F-829 RL, F-829 BH and F-829 BHSB)
- Spare Tire and Bracket with Molded Cover
- Stove Cover
- Tinted Safety Glass Windows
- Torsion Axle, Independent Suspension

- Triple Entry Step
- Tub Surround
- TV Antenna/Cable/Sat.
- Two — 30 Lb. LP Gas Bottles with Molded Cover
- Vacuum Bonded Laminated Construction
- Enclosed Underbelly
- Full Extension Drawer Guides

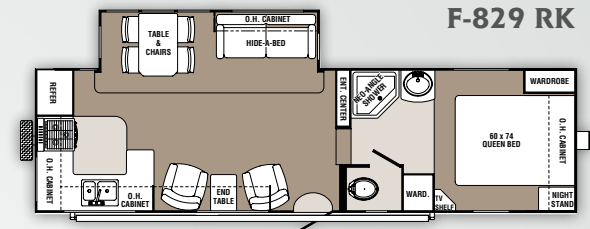
### OPTIONS

- A & E Electric Awning (Mandatory Option)\*
- Air Conditioner (13,500 BTU)\*
- Air Conditioner (Low Profile 13,500 BTU)
- Aluminum Wheels\*
- Counter Top Extension
- Create-A-Breeze™ Fan (Mandatory Option)
- Free Standing Table with Chairs (Std. on F-829 RK and F-829 RKSb)
- Hide-A-Bed Sofa (Std. on F-829 RK and F-829 RKSb)
- La-Z-Boy® Rocker/Recliner (Select Floorplans)
- Microwave\*
- Outside Gas Grill\*
- Raised Refer Door Upgrade (6 Panel)\*
- Roof Ladder
- Serta® Mattress Upgrade\*
- Slide Topper Awning
- Solar Panel (5-Watt) (Low Profile A/C Required)
- Solarium Windows (Std. on F-829 RK and F-829 RKSb)
- Super C-eater Sofa
- Three-Burner Range with Oven\*
- Water Purifier\*
- Outside Entertainment Center\*
- Electric Rear Stabilizer Jacks

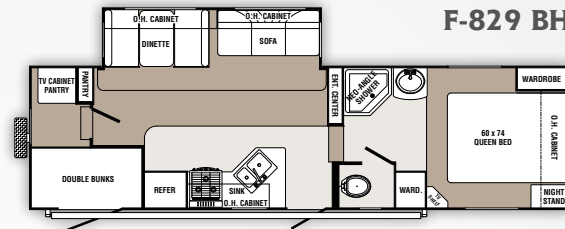
\*Included in Travel Pack



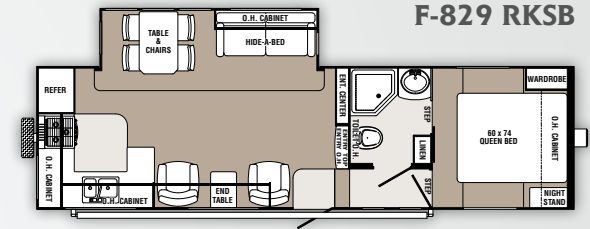
F-826 RL



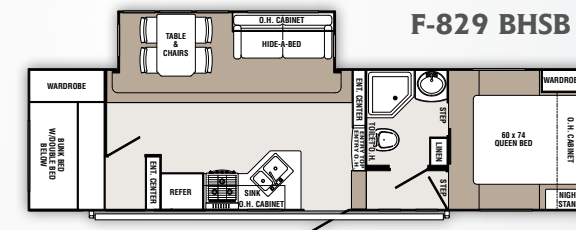
F-829 RK



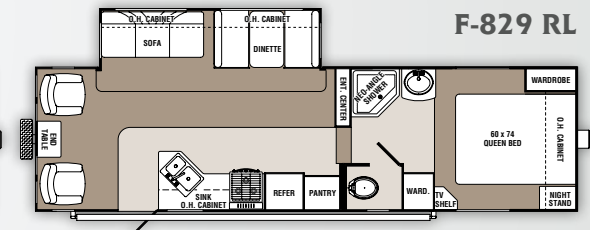
F-829 BH



F-829 RKSb



F-829 BHSB



F-829 RL

FIFTH WHEELS	F-826 RL	F-829 BH	F-829 BHSB	F-829 RK	F-829 RKSb	F-829 RL
<b>Hitch Dry Weight</b>	1452 lbs.	1318 lbs.	1644 lbs.	1142 lbs.	1219 lbs.	1309 lbs.
<b>Dry Axle Weight</b>	5177 lbs.	4969 lbs.	5609 lbs.	4887 lbs.	5735 lbs.	5601 lbs.
<b>Total Dry Weight</b>	6629 lbs.	6287 lbs.	7253 lbs.	6029 lbs.	6954 lbs.	6910 lbs.
<b>Carrying Capacity</b>	1823 lbs.	1667 lbs.	1391 lbs.	1749 lbs.	1265 lbs.	1399 lbs.
<b>GVWR</b>	8452 lbs.	8318 lbs.	8644 lbs.	8142 lbs.	8219 lbs.	8309 lbs.
<b>Interior Height</b>	6' 6"	6' 6"	6' 6"	6' 6"	6' 6"	6' 6"
<b>Exterior Height</b>	11' 10"	11' 10"	11' 10"	11' 10"	11' 10"	11' 10"
<b>Exterior Width</b>	8'	8'	8'	8'	8'	8'
<b>Travel Length</b>	28'	30' 5"	32' 6"	30' 5"	30' 4"	30' 5"
<b>Fresh Water Capacity</b>	32 Gals.	30 Gals.	32 Gals.	30 Gals.	32 Gals.	32 Gals.
<b>Gray Water Capacity</b>	31 Gals.	62 Gals.	69 Gals.	62 Gals.	69 Gals.	(2) 38 Gals.
<b>Black Water Capacity</b>	31 Gals.	31 Gals.	31 Gals.	31 Gals.	31 Gals.	38 Gals.



**PALOMINO RV ENCOURAGES YOU TO BUY LOCALLY**

Palomino RV strongly encourages our retail customers to purchase from their local dealership whenever possible due to the following factors:

- Our Dealers are, as a rule, independently owned and operated businesses. Outside of those customers they personally sold products to, they are not contractually obligated to perform warranty service on Palomino products that were purchased elsewhere. There may be an occasion that you would be required to return to the point of purchase to satisfy warranty requirements.
- Although many dealerships will eventually service products not purchased at their place of business, they will usually take care of their customers and other Palomino customers who are traveling away from their local dealer as they would their own.
- Local purchases allow a customer to establish a relationship with a dealer close to home. This relationship provides the customer with a convenient location for service and support from a "home town" professional.

- The opportunity for a thorough PDI (Pre-Delivery Inspection) and product orientation is an additional benefit of buying from your local dealer, further providing the opportunity for refresher courses or the ability to get questions answered much more conveniently.

- For our Canadian customers, there are also requirements which must be met to bring an RV purchased out of the country to their home. Although not insurmountable, these requirements may involve such things as additional inspections and certifications, taxes and fees. Your local Canadian Dealer is a professional at meeting these requirements.

Palomino RV's goal is for all RV Owners to fully enjoy their RV experience. In light of this goal, and considering the advantages of buying local, we encourage you to be thorough when determining what product to purchase and which dealer to purchase it from as both are key to your ultimate satisfaction and the realization of your dreams.



*V-Series*

Discover a  
**new world.**



Free Emergency  
Roadside  
Assistance Service  
Administered by  
Coach-Net®. Ask  
your dealer for  
more information.

**Palomino RV**

1047 East M-86 • Colon, MI 49040  
Phone: (269) 432-3271 • Fax: (269) 432-2516  
[www.palominorv.com](http://www.palominorv.com)

All illustrations and specifications contained in this literature are based on the latest product information at time of publication. Forest River reserves the right to make changes in prices, colors, materials, equipment and specifications at anytime, without notice, and assumes no responsibility for any error in this literature. All units are shipped F.O.B. point of manufacture.

Palomino Travel Trailers and Fifth Wheels are designed to meet the varied needs of the customer. It is the responsibility of the owner to select the proper load combination for their individual needs without exceeding the listed axle weight capacities.

Dealer