

SPORTSCOACH



SPORTSCOACH



CoachmenRV.com

# THE COACHMEN ADVANTAGE

What is the Coachmen advantage? It's the collection of unique features offered in a Coachmen motorhome to ensure a smoother ride, a better camping experience, and a motorhome that will last for years.

## 1. NOBLE SELECT™

Protected by a three-year warranty, these sidewalls have a high-gloss gelcoat finish to prevent fading. They are also 20% lighter than wood substrate sidewalls, provide more occupant cargo carrying capacity, and offer three times the insulation against extreme climates.

## 2. AZDEL™ COMPOSITE

Most manufacturers use wood sidewalls that can expand, swell, and eventually mold. We use Azdel. It's impervious to water, won't rot or mold, and, with less than a 1% chance of delaminating, it ensures the long-term integrity of the sidewalls.

## 3. REINFORCED LAMINATION

We vacuum bond and pinch roll every sidewall, floor, and roof, then perform a pull adhesion test. Most manufacturers just do one process or the other, but by doing both we improve the strength and longevity of the sidewalls.

## 4. FOREFRONT OF TECHNOLOGY

We offer the latest in technology by pairing electronics with smart phones. A safer and larger viewing area is achieved when dual-mirroring your smart phone GPS to the 10" Axxera dash radio and backup system. The MyRV OneControl app allows you to control electronics—including master lights, slide room, and awning—right from your phone. Wi Fi Ranger will help keep you connected in more remote areas.

## 5. SIGHT RITE DASH™

Our dashes are angled 20 degrees forward. This increases the line of sight for the driver, and offers the best road visibility on the market.

## 6. EVEN COOL DUCT™

Our patented duct system evenly disperses air through the whole coach. And we use Amaco ducting instead of Styrofoam because it's antimicrobial, preventing the growth of bacteria and ensuring a cool, clean coach in even scorching heat.

## 7. DIGITAL OWNER'S MANUAL

Our owner's manuals are easy to access through the Coachmen website or our free app. Supplemented with videos, PowerPoints, and more, it's got all you need to know about your coach.

## EXTERIOR COLOR OPTIONS



Full Body Paint – Eventide



Full Body Paint – Siesta Key

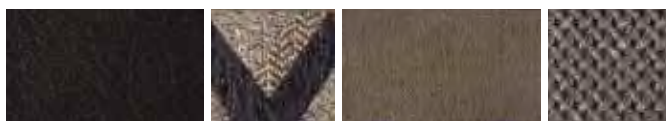


Full Body Paint – Brandywine



Full Body Paint – Cimmaron

## INTERIOR DECOR COLOR SELECTIONS



Monterey



Napa



Sonoma

## INTERIOR WOOD COLOR SELECTIONS



Slate Cherry



Driftwood



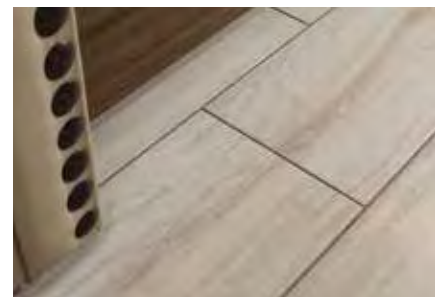
Sumatra



# A LUXURY COACH, INSIDE AND OUT.



WHEN NOT TAKING IN BREATHTAKING VIEWS FROM THE GREAT OUTDOORS, FEAST YOUR EYES ON THE REMARKABLE INTERIOR VIEWS OF THE SPORTSCOACH – THE MOST AFFORDABLE DIESEL ON THE MARKET.



Whether you're preparing a meal or watching your favorite sporting event, Sportscoach has it all. From its tastefully appointed kitchen to the exterior LED TV, you'll want to show it off. Each floorplan is beautifully outfitted with tile flooring throughout and the 50<sup>th</sup> Anniversary Edition features our custom embroidered anniversary logo, black chrome: mirrors, headlight bezels, rims, rocker panels; LED ground effect lighting, cedar-lined closets and a custom chrome nameplate.



With a 360HP ISB Cummins rear diesel engine and a 6-speed Allison 3,000 MH automatic transmission, Sportscoach gets 800 lbs./ft. of torque and has a 10,000 pound towing capacity.

Sportscoach comes fully-equipped with an outdoor entertainment system, including an exterior LED TV.

Storage is plentiful in Sportscoach, including a pass-through full basement that's ideal for stowing oversized gear without compromising living space.

The super durable Tread Lite™ Double Power Step makes it easy to board and exit safely.



8.0KW Diesel generator with slide tray allows for easy access.





Photography features the Sportscoach 409BG floorplan with Napa decor and Sumatra cabinets.





Every Sportscoach is prepped and ready for a stackable washer/dryer so you'll always have fresh laundry.

Sportscoach's 409BG floorplan is one of few motorhomes to include two full bathrooms, both with stainless steel and porcelain touches making them easy to clean.

In the bedroom you'll find a king mattress with an elegant designer headboard, spacious wardrobe and an LED TV.



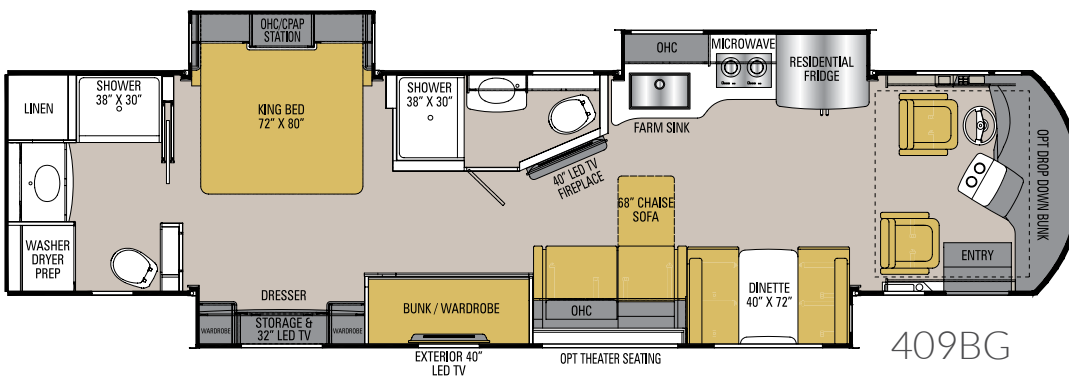
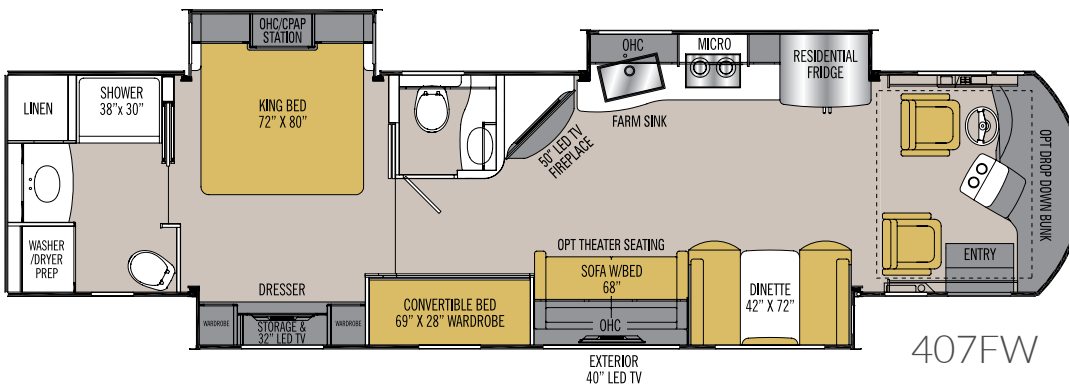
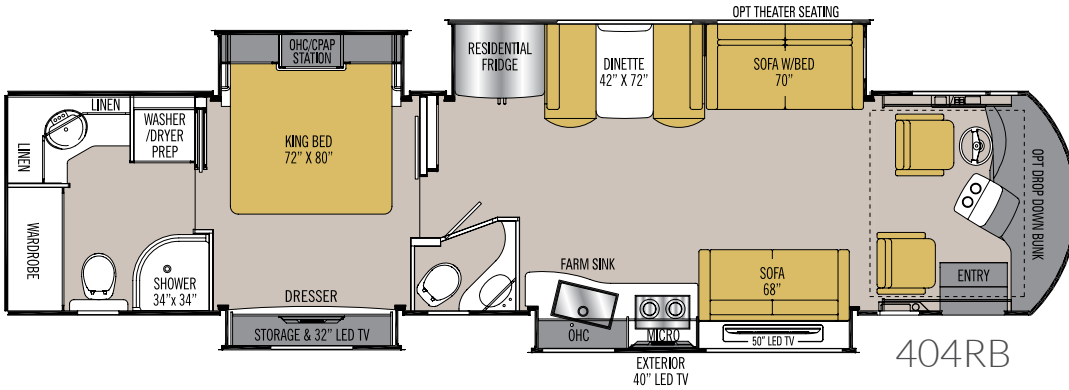
The Coach-Pap™ Station allows for storage of CPAP machines and other electronics, located in the cabinet above the bed.

Spacious bunk beds (409BG, 407FW) have their own 13" TV and DVD player. The bunks also convert into a full wardrobe.

After a long, adventurous day, kick back and relax in front of the electric fireplace and 40" or 50" LED TV (depending on floorplan).

Sportscoach includes  
three floorplan options,  
so you'll have no trouble  
choosing the one that suits  
you perfectly.

# FLOORPLANS



## STANDARD FEATURES

### INTERIOR APPOINTMENTS

Padded Vinyl Ceiling  
Hardwood Cabinet Doors Throughout  
Tile Floor Throughout  
Self Closing Ball Bearing Drawer Guides Throughout  
Brushed Nickel Hardware and Fixtures  
Electric Step Cover  
Power Front Privacy Shade and Manual Side Shades  
6-Way Power Driver/Passenger Seats  
Solar Privacy Shades Throughout  
Faux Leather Visionary Sofa Hide-A-Bed (n/a 409BG)  
Chaise Lounge Sofa (409BG only)  
Dream Dinette  
Storage Drawers under Booth Dinette  
Solid Surface Countertops Throughout

### INTERIOR EQUIPMENT

Fire Extinguisher  
50" LED TV (404RB, 407FW)  
40" LED TV (409BG)  
Charging Station for Electronic Devices  
King Jack TV Antenna  
Pre-Wired for Satellite Dish and Blu-ray Players  
Cable TV Jack  
LP Leak Alarm  
Smoke Detector  
Carbon Monoxide Detector  
10.1" Touch Screen Radio AM/FM  
with Bluetooth, Dual Mirror Technology  
and Camera Monitor  
Fireplace (407FW, 409BG)  
Stackable Washer/Dryer Ready  
Three-Speed Roof Vent  
Wi Fi Ranger  
Sound Bar Entertainment System

### GALLEY

30" Stainless Steel OTR Convection Microwave  
2-Burner Induction Cook Top  
22 cu. ft. Stainless Steel Refrigerator  
Tile Kitchen Back Splash  
Fantastic Power Ceiling Vent  
Solid Surface Sink Covers  
Large Stainless Steel Sink  
Pop-up Recept with USB Ports

### BATH AND WATER

Whole Coach Water Filter\*  
Single Pedal Porcelain Toilet with Sprayer  
Fiberglass Shower Stall\*  
Clear Glass Shower Door\*  
Power Bath Vent  
Water Pump Switch at Termination  
Demand Water Pump\*  
Black Tank Flush System  
Skylight Over the Shower\*  
Winterization Inlet at Termination Compartment  
Chair-Rail in Toilet Room  
10-Gallon Gas/Electric E.I. Water Heater\*

### SLEEPING

King Bed 72W X 80L  
Upgraded Mattress  
Bedspread, Pillows with Shams  
Residential Style Headboard  
32" LED TV Bedroom  
13" TV with DVD in Bunks (407FW, 409BG)  
Coach-Pap™ Station  
Bedroom Radio AM/FM/Bluetooth  
with Outside Speakers

### ELECTRICAL/HEATING/AC

My RV Multiplexing Control Center  
50-Amp Power Cord  
Two GFI Circuits (Kitchen & Bathroom)  
Outside Receptacle (DS)  
LED Interior Ceiling Lighting  
Emergency Start Switch  
Coach and Chassis Battery Disconnect  
Auto Generator Start  
Exterior LED Strip Light  
13,500 BTU Ducted Roof A/C Front  
13,500 BTU Ducted Roof A/C Rear  
20-Gallon LP Tank  
8.0KW Diesel Generator with Slide Tray  
Power Control System  
with Inverter Assist-120V  
Automatic Transfer Switch  
2000W Inverter with (4) Auxiliary Batteries  
Solar Panel Hook-Up

### AUTOMOTIVE/EXTERIOR

New Diesel Cockpit Dash Console  
Raised Rail Freightliner Chassis  
Defroster Fans  
Telescoping Tilt Steering Wheel  
Cruise Control  
Intermittent Wipers  
Dash Air Conditioning  
Exterior Mirrors with Heat and Remote  
Auxiliary Driving Lights  
Fuel Fills, Both Sides  
Fully Automatic Leveling Jacks  
Chassis Air Suspension and Air Brakes  
360HP ISB Cummins Rear Diesel Engine,  
Torque 800 lbs./ft.  
6-Speed Allison 300MH Automatic Transmission  
22.5 Radial Tires with Aluminum Rims  
Deluxe Radius Entrance Door  
with Dead Bolt Lock  
Front and Rear Mud Flaps  
Power Entrance Steps-Double  
Aluminum Side Swing Compartment Doors  
Front and Rear Fiberglass Caps  
Air Horn  
Rear Vision Camera with Color Monitor  
Color Side Cameras with Color Monitor  
Roof Ladder  
10,000 lb. Towing Hitch with 7-Way Plug  
Slide-Out Awning(s)  
Auxiliary Air Supply Hook-Ups  
Flush Floor Bedroom  
Pass Through Basement Storage  
Full Body Paint  
Crowned, Laminated Fiberglass Roof  
Power Patio Awning  
Frameless Tinted Windows with Safety Glass  
Power Entry Door Awning  
Outside Entertainment Center  
Full Width Rear Rock Guard "Sportscoach"  
Lighted Interior and Exterior Assist Handles  
High Gloss Gelcoat Sidewalls  
(with Azdel™ Superlight Composite)  
Exterior Propane Hook-Up

*\* Quantity of two each on 409BG*

## OPTIONAL FEATURES

### INTERIOR COLOR SELECTIONS

Monterey  
Napa  
Sonoma

### INTERIOR WOOD COLOR SELECTIONS

Slate Cherry  
Driftwood  
Sumatra

### EXTERIOR COLOR SELECTIONS

Partial Paint (Standard)  
Full Body Paint (Optional)

- Eventide
- Siesta Key
- Brandywine
- Cimmaron

### OPTIONAL FEATURES

Front Drop-Down-Bunk  
Theater Seating  
Buffet Table with 2 chairs/2 folding (404RB Only)  
40" Cockpit Mounted TV  
(n/a with bunk)  
Wardrobe in Place of Bunks (409BG Only)  
Dual Pane Frameless Windows  
15,000 BTU A/C with Heat Pump Front  
15,000 BTU A/C with Heat Pump Rear  
Slide-Out Basement Storage Tray  
Stackable Washer & Dryer  
Double Clear Coat for Full Body Paint  
Diamond Shield Protection  
CSA Up-fit  
CD-MVSA (Canadian Motor Vehicle Safety Act)<sup>1</sup>  
Travel Easy Roadside Assistance  
provided by Coach-Net

## 50<sup>TH</sup> ANNIVERSARY OPTION PACKAGE

Exterior Paint - Eventide  
Custom Logo Etched  
(Retail Nameplate - Numbered)  
Custom Logo 50th Anniversary Jackets  
Custom Logo 50th Anniversary Embroidered Seats  
Black Chrome Headlight Bezels  
and Side View Mirrors  
Black Chrome Compartment Door Moldings  
Black Chrome Rims  
Chassis Underbody LED Lighting  
Solar Panel  
Cedar Lined Wardrobe

#### Notes:

<sup>1</sup> *Mandatory For All Canadian Provinces*

## SPORTSCOACH RD SPECIFICATIONS

CLASS A DIESEL	404RB	407FW	409BG
CUMMINS ISB 6.7L ENGINE	360 HP@2400 RPM	360 HP@2400 RPM	360 HP@2400 RPM
ALLISON TRANSMISSION	3000MH	3000MH	3000MH
WHEEL BASE	266"	266"	266"
GVWR	32,000 lbs	32,000 lbs	32,000 lbs
GCWR	42,000 lbs	42,000 lbs	42,000 lbs
FUEL CAPACITY	100 gal	100 gal	100 gal
LP GAS CAPACITY	20 gal	20 gal	20 gal
FURNACE (BTUs)	(2) 20,000	(2) 20,000	35,000
EXTERIOR LENGTH (w/o Ladder)	41' 1"	41' 1"	41' 1"
EXTERIOR HEIGHT (w/A/C)	12' 10"	12' 10"	12' 10"
EXTERIOR WIDTH	102"	102"	102"
FRESH WATER	89 gal	89 gal	89 gal
GREY WATER	52 gal	52 gal	52/52 gal
BLACK WATER	46 gal	52 gal	52 gal
WATER HEATER	10 gal	10 gal	(2) 10 gal
AWNING SIZE	17'	18'	18'
EXTERIOR STORAGE	254 cu. ft.	254 cu. ft.	213 cu. ft.
TOW HITCH	10,000 lbs	10,000 lbs	10,000 lbs

**GVWR (Gross Vehicle Weight Rating)** is the maximum permissible weight of the unit when fully loaded. It includes all weights, inclusive of all fluids, occupants, cargo, optional equipment and accessories. For safety and product performance do NOT exceed the GVWR.

**GCWR (Gross Combined Weight Rating)** is the maximum permissible loaded weight of your motor home and any towed trailer or towed vehicle. Actual GCWR of this vehicle may be limited by the sum of the GVWR and the installed hitch receiver maximum capacity rating; see hitch rating label for detail.

**GAWR (Gross Axle Weight Rating)** is the maximum permissible weight, including cargo, fluids, optional equipment and accessories that can be safely supported by each axle.

**UVW (Unloaded Vehicle Weight)** \* is the typical weight of the unit as manufactured at the factory. It includes all weight at the unit's axle(s), including full fuel, all fluids and LP Gas. The UVW does not include cargo, fresh potable water, additional optional equipment or dealer installed accessories.

\*Estimated Average based on standard build optional equipment.

**CCC (Cargo Carrying Capacity)** \*\* is the amount of weight available for fresh potable water, cargo, passengers, additional optional equipment and accessories. CCC is equal to GVWR minus UVW. Available CCC should accommodate fresh potable water (8.3 lbs per gallon). Before filling the fresh water tank, empty the black and gray tanks to provide for more cargo capacity.

\*\* Estimated average based on standard build optional equipment

Each Coachmen motorhome is weighed at the manufacturing facility prior to shipping. A label identifying the unloaded vehicle weight of the actual unit and the cargo carrying capacity is applied to every Coachmen motorhome prior to leaving our facilities.

The load capacity of your unit is designated by weight, not by volume, so you cannot necessarily use all available space when loading your unit.

Actual towing capacity is dependent upon your particular loading and towing circumstances, which includes the GVWR, GAWR and GCWR as well as adequate trailer brakes. Please refer to the Operator's Manual of your vehicle for further towing information.

All information contained in this brochure is believed to be accurate at the time of publication. However, during the model year, it may be necessary to make revisions and Coachmen reserves the right to make all such changes without notice, including prices, colors, materials, equipment and specifications as well as the addition of new models and the discontinuance of models shown in this brochure. Therefore, please consult with your Coachmen dealer and confirm the existence of any materials, design or specifications that are material to your purchase decision. 11/18

©Copyright 2018 Sportscoach RV a Division of Forest River Inc. - All Rights Reserved.

### CUSTOMER SATISFACTION



[www.ForestRiverBuyLocal.com](http://www.ForestRiverBuyLocal.com)



**FREE MEMBERSHIP**  
[www.coachmenowners.com](http://www.coachmenowners.com)



**Learn More**  
Scan this barcode using a QR Reader on your smart phone to learn more about Forest River.



A Berkshire Hathaway company.



### Travel Easy™ Roadside Assistance



RVing is easier with Sportscoach's Travel Easy™ Roadside Assistance provided FREE the first year of ownership to those who purchase a New Sportscoach RV. Administered by Coach-Net, this service provides you with 24/7 operational, technical and emergency road service coverage. Also included is towing, fuel delivery, jump starts, lockout service, tire changes, mobile mechanic and unlimited technical assistance. Anywhere. Anytime. Travel Easy™ is the security of knowing that help is an easy phone call away.

Sportscoach RV, a Division of Forest River, Inc.,  
A Berkshire Hathaway Company

423 N. Main St., P.O. Box 30, Middlebury, IN 46540

To learn more about Sportscoach RV and our products and see how Sportscoach is making the easy life easier, visit [www.sportscoachrv.com](http://www.sportscoachrv.com)