

ROCKWOOD MINI LITES & ROO

ROCKWOOD
PROVIDING OUTDOOR FUN SINCE
1974



ROCKWOOD MINI LITES & ROO

MINI LITES

ROO



Over 40 Years of Excellence

FROM HUMBLE BEGINNINGS, ROCKWOOD HAS EMERGED AS AN INDUSTRY LEADER IN THE MANUFACTURING OF LIGHT WEIGHT TRAVEL TRAILERS, FIFTH WHEELS AND CAMPING TRAILERS.

Located in Millersburg, IN since 1974, Rockwood has been supported by this community and the local families residing there. These families have helped provide hundreds of workers that have brought their dedication to quality workmanship, respect for their fellow workers and a commitment to an uncompromising work ethic to make a major contribution to this company's success. Founded on the principle of providing superior value and service while remaining in tune with customer's preferences, Rockwood has become the ultimate luxury product in the light weight trailer market. Rockwood provides more innovative floor plans, appealing features and refined interior appointments than any other in its class.





TODAY, ROCKWOOD REMAINS COMMITTED TO INSURING THAT OUR CUSTOMERS ENJOY THEIR CAMPING EXPERIENCES.

Through the utilization of our experienced work force, “state of the art” lamination facility, modern production plants and detailed assembly processes our aim is to continue to provide our customers with the best built product possible at an unmatched value.



THE TRADITIONAL ROCKWOOD ROO AND MINI LITES CONTINUE TO PROVIDE UNSURPASSED VALUE AND COMFORT.

The spacious interiors offer numerous windows, 80" vaulted ceilings with directional vented air conditioning and extensive interior LED lighting throughout. Rich with appointments like solid surface kitchen counter tops and under mount kitchen sinks (select models), a stove top with glass cover, that doubles as counter top space, a 22" oven and distinctive Driftwood and Maple cabinets with solid wood doors and drawer fronts throughout. Value like no other!



2506S

INDIGO / DRIFTWOOD



Standard White Exterior

Featuring an aluminum framed with vacuum bonded construction, a high gloss fiberglass exterior and deluxe graphics, the Rockwood Roo and Mini Lite products are among the best constructed, most well insulated trailers available on the market today.



Optional Champagne Exterior

Rockwood travel trailer models are loaded with features like Polished alloy wheels with Nitro filled radial tires mounted to Dexter Torflex Torsion Rubber Ride Axles for a smooth, safe ride. Along with that smooth ride, look in the rear view window... we added style with framless windows, a sleek automotive front windshield and a graphics package second to none





A NEW STANDARD HAS BEEN RAISED.

Rockwood offers a group of appealing features to enhance your lifestyle and camping experience. Brand name appliances, ducted furnaces, a quick recovery auto gas / electric water heater and built in entertainment centers with Blue Tooth technology and a sound bar, are just a few of the standards you can expect. For those who really want to get away all our units are solar ready!

Styling and amenities while keeping your towing and camping needs in mind.



183 ROO
MOCHA / DRIFTWOOD



Mini Lite

2509S
GRAPHITE / MAPLE

MAKING YOUR INVESTMENT GO A LONG WAY.

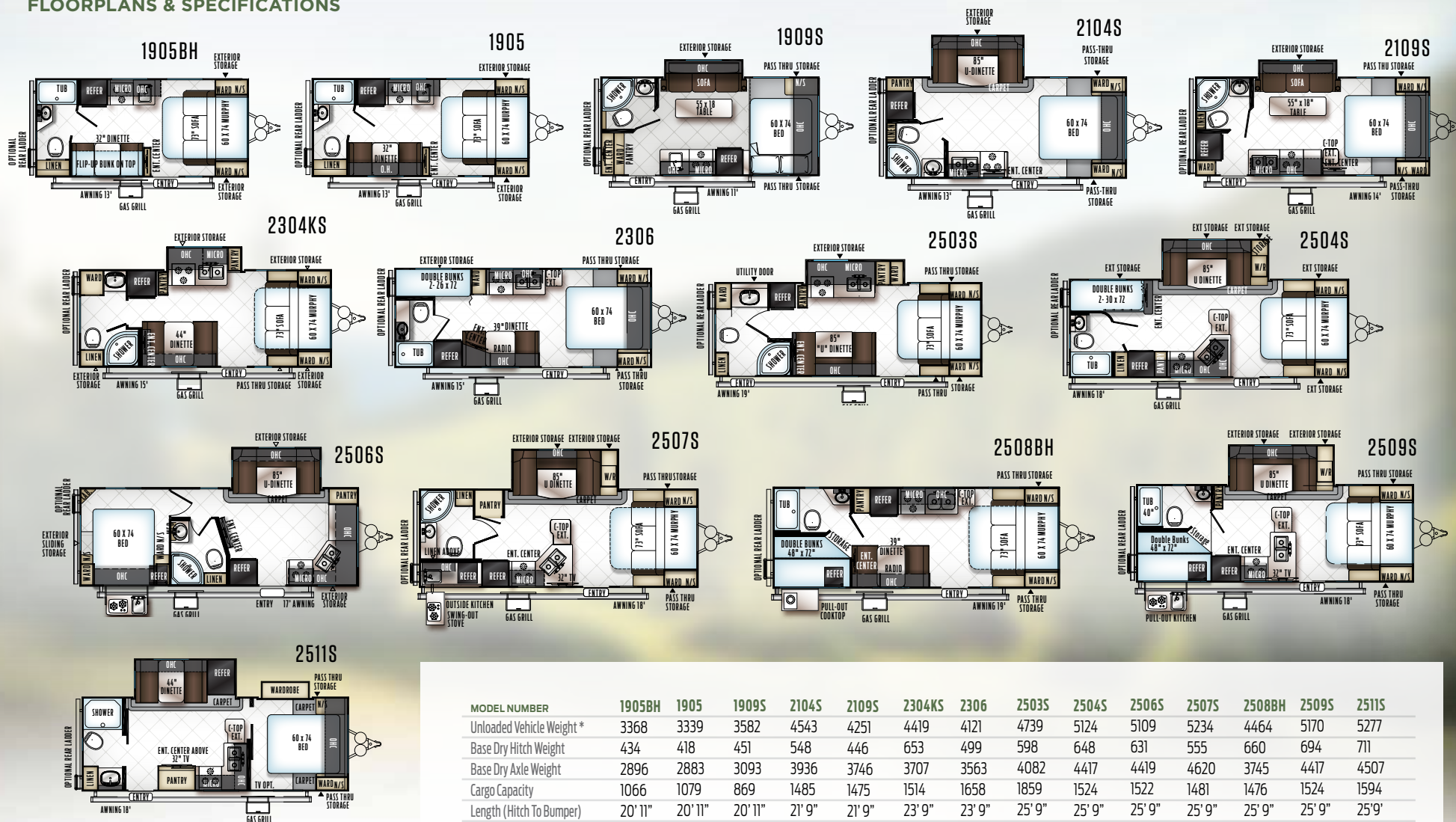
Rockwood takes pride in packing the most value possible into our Mini Lite series. Finding the perfect fit for the specific needs of your active family is made easier by the wide variety of floor plans available. Each model comes packed with features to give you flexibility you won't find in comparable products.



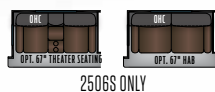
Optional Champagne Exterior



FLOORPLANS & SPECIFICATIONS



SLIDE OPTIONS



FREE STANDING TABLE & CHAIRS OPTION



MURPHY BED OPTION:



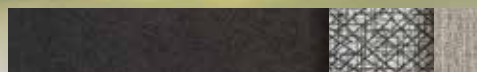
MODEL NUMBER	1905BH	1905	1909S	2104S	2109S	2304KS	2306	2503S	2504S	2506S	2507S	2508BH	2509S	2511S
Unloaded Vehicle Weight *	3368	3339	3582	4543	4251	4419	4121	4739	5124	5109	5234	4464	5170	5277
Base Dry Hitch Weight	434	418	451	548	446	653	499	598	648	631	555	660	694	711
Base Dry Axle Weight	2896	2883	3093	3936	3746	3707	3563	4082	4417	4419	4620	3745	4417	4507
Cargo Capacity	1066	1079	869	1485	1475	1514	1658	1859	1524	1522	1481	1476	1524	1594
Length (Hitch To Bumper)	20' 11"	20' 11"	20' 11"	21' 9"	21' 9"	23' 9"	23' 9"	25' 9"	25' 9"	25' 9"	25' 9"	25' 9"	25' 9"	25' 9"
Width	96"	96"	96"	96"	96"	96"	96"	96"	96"	96"	96"	96"	96"	96"
Height With A/C	126"	126"	126"	131"	123"	123"	123"	124"	131"	131"	131"	124"	131"	131"
Interior Height	80"	80"	80"	80"	80"	80"	80"	80"	80"	80"	80"	80"	80"	80"
Fresh Water Capacity	43 gal	43 gal	43 gal	43 gal	43 gal	43 gal	43 gal	43 gal	43 gal	43 gal	43 gal	43 gal	43 gal	43 gal
Gray Water Capacity	30 gal	30 gal	30 gal	30 gal	30 gal	30 gal	30 gal	30 gal	30 gal	60 gal	30 gal	30 gal	30 gal	30 gal
Black Water Capacity	30 gal	30 gal	30 gal	30 gal	30 gal	30 gal	30 gal	30 gal	30 gal	30 gal	30 gal	30 gal	30 gal	30 gal

The Unloaded Vehicle Weight (UVW) listed represents the weight of one trailer with that model's standard equipment including the content of specified option packages. * See back cover for further specification definitions.



Roo

MAKING YOUR INVESTMENT GO A LONG WAY. Rockwood takes pride in packing the most value possible into our Roo series. With a wide variety of floor plans available and built in standards second to none, we are sure you will find a Rockwood Roo that fits your needs. Built in value in all we do!



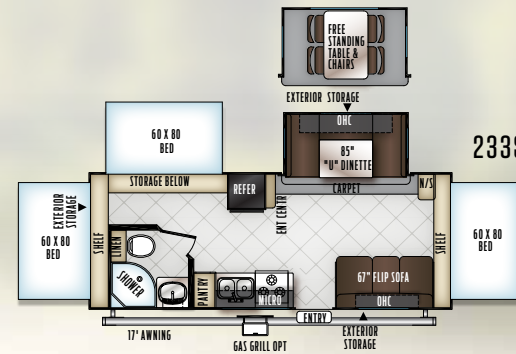
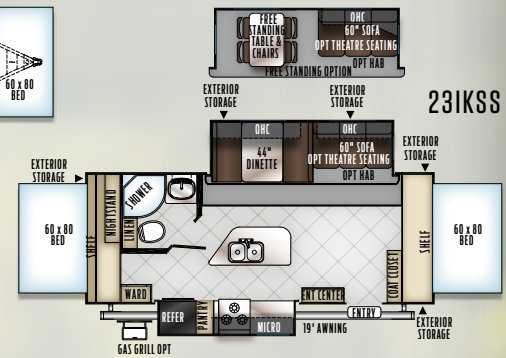
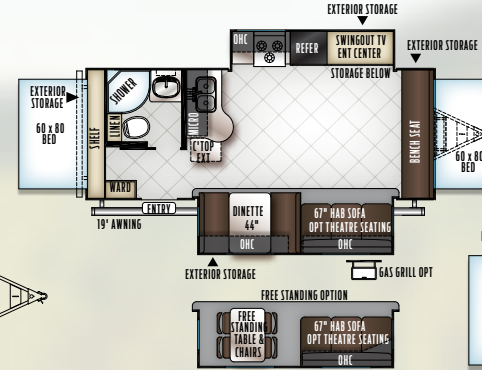
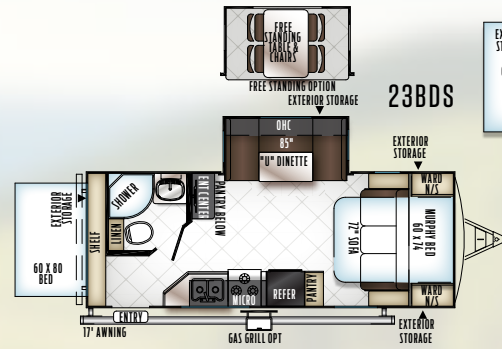
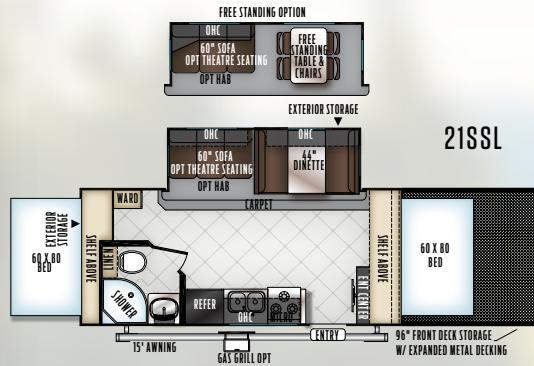
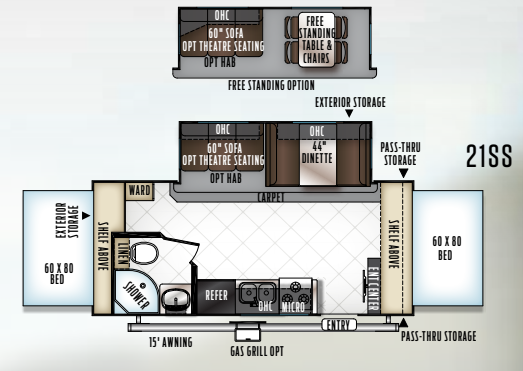
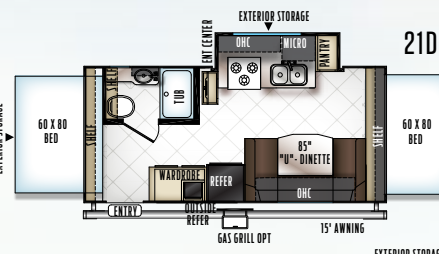
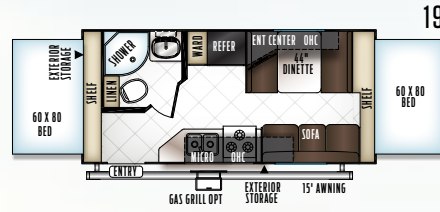
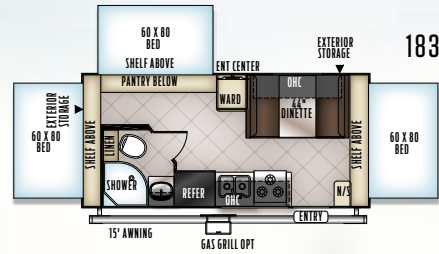
24WS
GRAPHITE / MAPLE



Optional Champagne Exterior



FLOORPLANS & SPECIFICATIONS



FREE STANDING TALE
& CHAIRS OPTION



OPT FOR 23BDS
& 233S



MODEL NUMBER	183	19	21DK	21SS	21SSL	23IKSS	233S	23FL	23BDS	24WS
Unloaded Vehicle Weight *	3904	3885	4186	4795	5704	5445	4842	5617	5201	5299
Base Dry Hitch Weight	387	434	584	600	452	684	612	750	592	616
Base Dry Axle Weight	3479	3413	3564	4157	5214	4723	4192	4829	4571	4645
Cargo Capacity	1483	1549	1598	1805	1748	1239	1770	1133	1391	1317
Length (Hitch To Bumper)	21' 3"	21' 3"	21' 9"	22' 10"	32' 2"	25' 3"	25' 3"	25' 3"	25' 6"	25' 3"
Trailer Length (Open)	25' 7"	25' 7"	26' 1"	27' 2"	36' 4"	29' 7"	29' 7"	29' 7"	29' 10"	29' 7"
Width	96"	96"	96"	96"	96"	96"	96"	96"	96"	96"
Height With A/C	126"	126"	126"	130"	134"	130"	126"	130"	130"	130"
Interior Height	80"	80"	80"	80"	80"	80"	80"	80"	80"	80"
Fresh Water Capacity	43 gal	43 gal	43 gal	43 gal	43 gal	43 gal	43 gal	43 gal	43 gal	43 gal
Gray Water Capacity	30gal	30gal	30gal	30gal	30gal	30gal	30gal	30 gal	30 gal	30 gal
Black Water Capacity	30gal	30gal	30gal	30gal	30gal	30gal	30gal	30 gal	30 gal	30 gal

The Unloaded Vehicle Weight (UVW) listed represents the weight of one trailer with that model's standard equipment including the content of specified option packages.

* See back cover for further specification definitions.

Popular Features

FEATURES THAT MAKE YOUR TRIPS FEEL LIKE HOME. Rockwood takes careful consideration to each feature added into each product produced. Every detail is considered ranging from extra sleeping room, storage, comfort and convenience. Take time to review the features listed below and match them with the competition's products. We're confident you'll discover Rockwood is the superior choice.



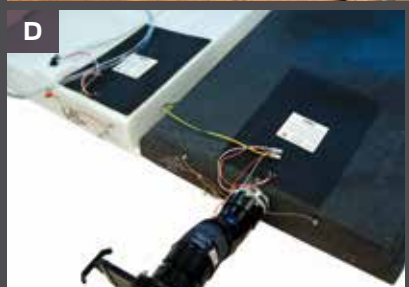
- A Power Awning with tilt adjustment and LED indirect lighting (Opt.)
- B 24" and 32" TV, entertainment center and sound bar where applicable. (Selected Models)
- C Radius Glass Door Shower (N/A Models with Tub Bases)
- D Solid Surface Kitchen counter tops with flush mount sink and covers. (Excludes 1905, 1905BH & 1909S)
- E Deluxe Tri-Fold Sleeper Sofa (Per floorplan)
- F Deluxe Tri-fold Sleeper Sofa with Comfortable, Easy Set-up Queen Bed



Optional Champagne Exterior



Standard White Exterior



A Rear camera prep. (Std. all models) The Furion observation camera system with digital wireless technology is sold separately.

B Control Panel (Std.)

C WIFI Ranger WIFI Booster (Std.)

D Heated holding tanks with 12 Volt heat pads secured to the bottom. No need to use the furnace to heat tanks when traveling. (Opt.)

E Solar Panel Prep (Std. All Models) The Zamp 40 amp. portable solar panel shown is sold separately.

F 60" Heated theater seating available. (Per floorplan)

SOFA & CHAIR LEATHER APPEARANCE, DINETTE CUSHIONS, VALANCE ARMS & ACCESSORIES



GRAPHITE



INDIGO



MOCHA

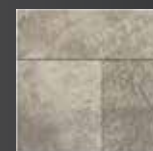
VALANCE TOP, & DINETTE INSERT



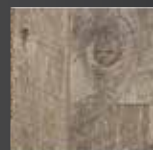
DRIFTWOOD DÉCOR STANDARD



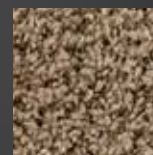
MAPLE DÉCOR OPTION



STANDARD FLOOR COVERING



OPTIONAL FLOOR COVERING



CARPET

Quality Construction

THE DETAILS ARE WHAT MAKE ALL THE DIFFERENCE. Rockwood takes pride in constructing the very best products possible in each price point. From our entry level units to our top of the line products, no short cuts are taken to achieve excellence. From the all-steel I-beams to the residential interior amenities to the vacuum-bonded exteriors, Rockwood products are quality built from the ground-up.



- A** Glued and screwed wood cabinetry
- B** Aluminum dinette frames for added strength and weight savings
- C** 5/8" tongue and groove plywood glued and screwed to aluminum framing. (NA 19' Mini Lites)
- D** Extra large dinette storage drawers and full extension metal drawer guides in the kitchen
- E** Dexter Torflex Axles:
 - Independent wheel suspension and self-damping action
 - Rubber cushioning eliminates metal-to-metal contact.
 - Forged torsion arm for maximum strength
- Models are also equipped with E-Z Lube® System and Nev-R-Adjust® Brakes.
- F** Standard under belly to protect trailer components as well as increasing aerodynamics on Mini Lites (Excludes 1905BH, 1905, 1909S and Roos)
- G** Aluminum Frame Construction with high gloss fiberglass exterior and deluxe graphics

ROOF CONSTRUCTION



Vacuum-bonded radius roof with vaulted ceiling providing superior insulation and more interior height.



4" thick roof with built in insulated A/C ducts



Built strong to enable you to conveniently perform periodic roof maintenance.

WALL STRENGTH



Structurally engineered materials makes our vacuum-bonded walls some of the strongest in the industry.

VACUUM-BONDED LAMINATED CONSTRUCTION



Rockwood is one of only a few manufacturers with six sided aluminum framing. Vacuum bonded walls and roof to ensure a well-insulated, light weight, strong structural trailer.

Standards & Options

ROCKWOOD ROO & MINI LITE

MODELS	R	ML	MODELS	R	ML	MODELS	R	ML
STANDARD PACKAGE H (1905, 1905BH, 1909S)	--	S*	Torsion Axle, Rubber-Ryde Suspension	S	S	Decorative Slide Out Fascia	S	S
Tinted Bonded Frameless Windows	--	S	Nitro Filled Radial Tires	S	S	Solid Wood and Raised Panel Doors and Drawers	S	S
Aluminum Wheels	--	S	Polished Alloy Wheels	S	S	Screwed and Glued Wood Cabinetry	S	S
AM/FM Stereo W/ DVD Player	--	S	LED TV W/ Multi-directional Antenna	S	S	Residential Full Extension Metal Drawer Guides	S	S
Dual LP Bottles	--	S	Prewire for Back Up Camera and Solar	S	S	Engineered Mold and Mildew Resistant Floor Covering	S	S
Flush Mount Stove Cover	--	S	Multi Zone Stereo W/ DVD/CD/AM/FM and Bluetooth Control	S	S	Ducted Furnace	S	S
Black Tank Flush	--	S	Outside Speakers	S	S	13,500 BTU Ducted Air (N/A 1905BH, 1905, 1909S, 183, 19)	S*	S*
Single Door Auto Gas/Elec. Refrigerator	--	S	Maxxair® Ventilation Fan and Vent Cover (2 for Pkg. G)	S	S	15,000 BTU A/C	O	O
Ducted Furnace	--	S	13,500 BTU Roof AC	S	S	13,500 Roof A/C (Std. 183, 19)(Opt. 1905BH, 1905, 1909S)	S*	S*
Heated Mattress	--	S	Night Shades	S	S	Carbon Monoxide Detector	S	S
TV Antenna	--	S	Double Bowl Undermount Kitchen Sink	S	S	12 Volt Power Plug Hook-up	S	S
Microwave Oven	--	S	Solid Surface Kitchen Countertops (N/A 19' Mini Lites)	S	S	CSA	O	O
Spare Tire Carrier and Cover	--	S	Recessed Cooktop W/ Flush Mount Cover	S	S	Monitor Panel Switch Station	S	S
Water Heater w/ Interior Gas and Electric Switches	--	S	Microwave Oven	S	S	55 Amp Converter With Charger	S	S
Gas Oven	--	S	Double Door Auto Gas/Elec. Large Refrigerator (Opt 19 and 183 Roo)	S	S	Battery Disconnect Switch	S	S
Outside Speakers	--	S	Water Heater w/ Interior Gas and Electric Switches	S	S	Recessed Ceiling LED 12 Volt Interior Lighting	S	S
Night Shades	--	S	Awning	S	S	Bunk Fan/Light Combination with Each Bed	S	--
			Black Tank Flush	S	S	Mounted 24" LCD TV (Opt. 1905BH, 1905, 1909S)	S	S*
STANDARD PACKAGES	PKG. G	PKG. D	Spare Tire W/ Carrier and Cover	S	S	Bedroom Mounted 24" LCD TV (Opt. R: 23IKSS, 233S, 2506S Only)	O*	O*
Square Bunk Ends W/ Attached Boots & Aircraft Cable (Pkg. G Only)	S	--	Tinted Bonded Frameless Windows	S	S	Mounted 32" LCD TV (R: 24WS, 21BD, 21DK, 21SS, 21SSL, 23IKSS		
Automotive Grade Easy Latch Bunk Latch/Lock (Pkg. G Only)	S	--	Outside Grill (Pkg. D Only)	O	S*	ML: 2506S, 2507S, 2508, 2509S, 2511S, 233S, 23BD, 24WS)	S*	S*
Aluminum Cage Dinette Base	S	S	Automotive Front Windshield	S*	S	43" TV" (23FL Only)	S*	--
6 Sided Aluminum Cage Construction	S	S				Digital AM/FM/CD/DVD w/ Remote	S	S
Vacuum Laminated 1 Piece Roof and Walls	S	S	INTERIOR FEATURES			MP3 Player Hook-Up	S	S
Enclosed Underbelly (Pkg D. Only)	--	S	Driftwood Interior	S	S	Premium Soundbar (Where applicable)	S*	S*
4 Frame Mounted Stabilizer Jacks	S	S	Maple (w/ Solid Maple Glaze Finished Cabinet Doors) Interior	O	O	Decorative Valances	S	S

STANDARDS & OPTIONS ARE SUBJECT TO CHANGE.



MODELS

	R	ML
Heated Theater Seating w/USB Ports ILO Sofa (Opt. 21SS, 21SSL, 23FL, 23IKSS, 24WS, 2506S Only)	0*	0*
Deluxe Tri-Fold Sleeper Sofa (Per floorplan)	0*	0*
44" Family Dinette (Per floorplan)	S*	S*
48" X 84" Spacious King-U-Style Dinette (Std. 2104S, 2504S, 2506S, 2507S, 2509S, 21DK, 233S)	S*	S*
Free Standing High Pressure Laminated Table	S	S*
Free Standing Table and Chairs (Per floorplan)	0*	0*
Stainless Steel Appliances	0	0
Double Door Auto Gas / Elect. Refrigerator	S*	S*
Raised Refrigerator Panels	0	0
Single Door Auto Gas/Elec. Refrigerator (1905BH, 1905, 1909S)	--	S*
3 Burner High Output Gas Range w/ Glass Stove Top Cover	S	S
Gas Oven (Required 21DK, 23IKSS, 2304KS, 2502KS, 2503S)	0*	0*
Under Mount Double Bowl Kitchen Sink w/ Residential Style Faucet (N/A 1905BH, 1905, 1909S)	S	S*
Residential One-Piece Sink Cover	S	S
Cutting Board	S	S
Counter Top Extension (Per floorplan)	S*	S*
Water-Pur Filtration System	S	S
Tub Surround	S	S
Radius Glass Door Shower	S*	S*
Bathroom Skylight	S	S
110 DSI Gas/Electric Six Gallon "Quick Recovery" Water Heater By-Pass Kit	S	S
Foot Flush Toilets	S	S
Extra Maxxair® Ventilation Fan and Vent Cover	S	0

MODELS

Murphy Bed w/ Under Sofa Storage System and Outside Access for Unmatched Floor Plan Flexibility (Per floorplan)	S*	0*/S*
Heated Mattress	S*	S
WIFI Ranger WIFI Booster	S	S
EXTERIOR FEATURES		
Magnetic Compartment Door Catches	S	S
Fully Aluminum Frame (Floor, Sidewall, & Roof)	S	S
Insulation Factors R-7 Side Wall, R-12 Floor and R-14 Ceiling	S	S
Radius Roofs w/ Interior Vaulted Ceilings	S	S
Vinyl / Rubber Composite Roofing Membrane	S	S
T V Antenna w/ Cable & Satellite Hook-Up	S	S*
Rear Observation Camera Prep w/ Molded Mounting Plate	S	S
Laminated Oyster Colored Fiberglass Sidewalls	0	0
Laminated Fiberglass Sidewalls	S	S
Distinctive Black Exterior Trim	S	S
Electric Slide-Out (All Slide Out Models)	S	S
Lower Front Diamond Plate Panel	--	S
Easy to Reach Lockable Bed Latch System	S	--
Bed Cable System (No Poles)	S	--
Rear Ladder	--	0
Bike Rack Ladder Attachment	--	0
Tongue Mount Bike Rack (N/A Roos)	--	0
Power Awning With Adjustable Rain Dump and LED Lighting	0	0
Awning Slide Topper	0	0
Entrance/Screen Door	S	S

MODELS

Friction Hinge Entrance Door	S	S
Large Assist Grab Handles	S	S
Radius Corner Windows and Doors	S	S
Thermopane Windows	0	0
Outside Grill Prep	S	S
Outside Gas Grill and Worktable (Opt. 1905BH, 1905, 1909S)	0	S*
Outside Shower	S	S
1/2 Sliding Storage Tray (N/A 1905BH, 1905, and All Models w/ Murphy Bed) (Opt. 183, 19, 21SS, 21SSL, 23IKSS)	0*	0*
Outside Antifreeze Stations	S	S
Two-20 Lb Gas Bottles (1905BH, 1905, 1909S Only)	S	S*
Two-30 Lb Gas Bottles	--	S*
Molded Bottle Cover	S	S
Surface Coated Steel I-Beam Frame (N/A 1905BH, 1905, 1909S)	S	S*
8' X 8' Front Storage Deck: 1300 LBS. Max Capacity (21SSL Only)	S*	--
Fuel Station with 18 Gallon Capacity (Gasoline Only) (Opt. 21SSL Only)	0	--
Toylok Mounted Locking System (21SSL Only)	S*	--
Power Tongue Jack	0	0
Easy Lube Axles and Nev-R Adjust Brakes	S	S
Radial Tires w/ Nitro Fill (1905BH, 1905, 1909S, w/ Single Axle)	S	S
Double or Triple Entry Step	S	S
Off Road Package (Includes: 15" Off Road Tires and Aluminum Wheels) (21SSL Only)	S*	--
Electronically Controlled Heated Holding Tanks	0	0
Black Water Flush	S	S

R = ROO, ML = MINI LITE

S = STANDARD, 0 = OPTIONAL, -- NOT AVAILABLE, * = SELECTED MODELS

FREE MEMBERSHIP
to Forest River Owners' Group

www.forestriverfrog.com



CUSTOMER SATISFACTION



www.Forest River Buy Local.com



PRE-DELIVERY INSPECTION FACILITY

20,000 square feet of quality assurance. The bare essentials for a premium product. This state-of-the-art facility gives immediate daily feedback to production for quality assurance in every unit built.

24/7 EMERGENCY ROADSIDE ASSISTANCE

For a worry-free ownership experience Forest River includes one year of Coach-Net RV Technical & Roadside Assistance with each RV purchase. Whether new to the RV lifestyle or an experienced RV enthusiast, Forest River owners have 24/7 access to technical, operational and emergency road service coverage throughout the US & Canada. Coach-Net's fast, dependable service is just a phone call away.

Coach-Net®
RV Technical & Roadside Assistance

LOOK FOR OUR OTHER POPULAR LINES OF ROCKWOOD CAMPING TRAILERS.



Rockwood Geo Pro



Rockwood Freedom, ESP, Premier, High Wall, Hard Side Campers



Rockwood Ultra Lite Travel Trailers & Fifth Wheels



Rockwood Signature Ultra Lite Travel Trailers, Fifth Wheels & Windjammers

Specification Definitions

GVWR (Gross Vehicle Weight Rating) - is the maximum permissible weight of the unit when fully loaded. It includes all weights, inclusive of all fluids, cargo, optional equipment and accessories. For safety and product performance do NOT exceed the GVWR.

GAWR (Gross Axle Weight Rating) - is the maximum permissible weight, including cargo, fluids, optional equipment and accessories that can be safely supported by a combination of all axles.

UVW (Unloaded Vehicle Weight)* - is the typical weight of the unit as manufactured at the factory. It includes all weight at the unit's axle(s) and tongue or pin and LP Gas. The UVW does not include cargo, fresh potable water, additional optional equipment or dealer installed accessories.

*Estimated average based on standard build optional equipment.

CCC (Cargo Carrying Capacity)** - is the amount of weight available for fresh potable water, cargo, additional optional equipment and accessories. CCC is equal to GVWR minus UVW. Available CCC should accommodate fresh potable water (8.3 lbs per gallon). Before filling the fresh water tank, empty the black and gray tanks to provide for more cargo capacity.

** Estimated average based on standard build optional equipment

Each Forest River RV is weighed at the manufacturing facility prior to shipping. A label identifying the unloaded vehicle weight of the actual unit and the cargo carrying capacity is applied to every Forest River RV prior to leaving our facilities.

The load capacity of your unit is designated by weight, not by volume, so you cannot necessarily use all available space when loading your unit.

ROCKWOOD WARRANTY

For details on Rockwood's complete warranty program, see your Rockwood dealer. When it comes to backing products with the same quality and commitment it does when it begins the manufacturing process, the only name you have to remember when you're looking for a recreational vehicle is Rockwood. Rockwood offers the following additional limited warranties to the original purchasers. Consult written warranty for details.

1. Twelve-year vinyl roof warranty,
2. Two-year fiberglass warranty,
3. Ten-year Torflex® axle warranty,
4. Five-year tent warranty,
5. One-year bumper to bumper warranty



Learn More
Scan this barcode using a QR Reader on your smart phone to learn more about Forest River.



A Berkshire Hathaway company.

201 WEST ELM MILLERSBURG, IN 46543
WWW.FORESTRIVERINC.COM/ROCKWOOD
574.642.2640

YOUR ROCKWOOD DEALER

All information contained in this brochure is believed to be accurate at the time of publication. However, during the model year, it may be necessary to make revisions and Forest River, Inc., reserves the right to make all such changes without notice, including prices, colors, materials, equipment and specifications as well as the addition of new models and the discontinuance of models shown in this brochure. Therefore, please consult with your Forest River, Inc., dealer and confirm the existence of any materials, design or specifications that are material to your purchase decision. Litho. U.S.A. P / W: 2017.08.31