



Travel Trailers and Fifth Wheels

LE SERIES
Affordable Quality



LA SERIES
Aluminum Framed Luxury





strut lifted underbed storage.



3/8" crowned truss, walk on roof decking.



zx-25 am/fm radio with cd-player.

MAKE THE MOST OF EVERY VACAT

Wildwood

by FOREST RIVER **LE**

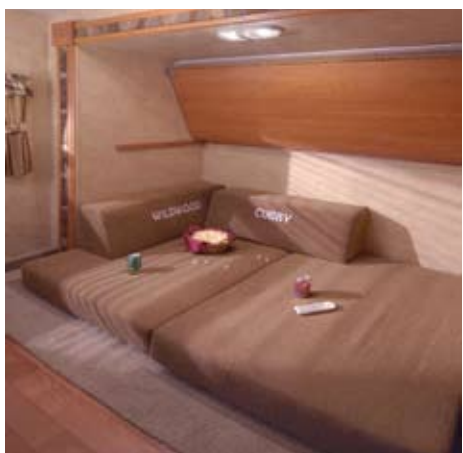
wildwood 26 tbss with burgundy interior-sleeps 10 and is 1/2 ton towable (shown with customer supplied tv)



heated and enclosed fresh water tank.



5/8" 5-ply tongue in groove plywood floor decking.



optional cubby mattress available on select models.

ION.



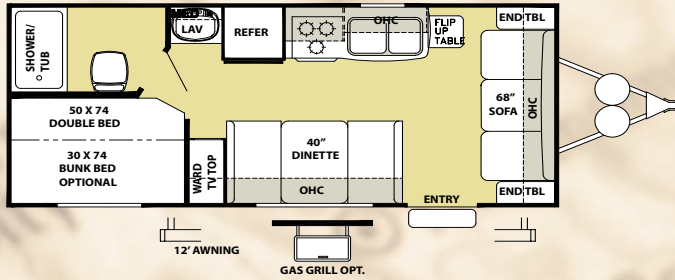
- | | |
|--|--|
| 1 80" Interior Height | 6 29BHBS has Portable Dinette Table |
| 2 Wildwood Tan Interior | 7 Optional Plankwood Linoleum Flooring |
| 3 Full Length Overhead Cabinets in Slide-out | 8 67" Full Slide-out Ceiling Height |
| 4 (2) Storage Compartments at Dinette Base | 9 Mortise and Tenon Cabinet Doors |
| 5 Storage Compartment Under Standard Sofa | 10 Windows on End Walls in Slide-outs. |



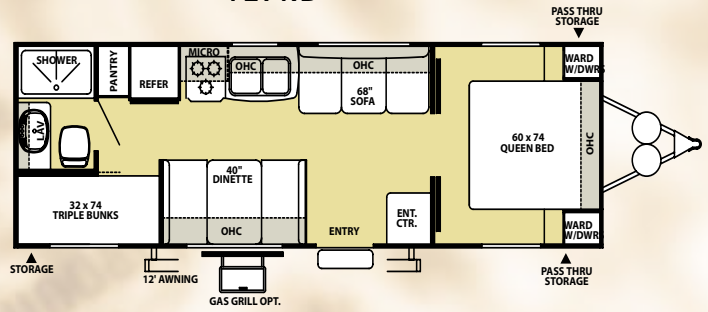
- | | |
|--|--|
| 1 Swing Arm Entry Assist Handle | 7 Tongue Set Up for Dual Batteries |
| 2 3/8" Full Service Walk-on Roof Decking | 8 Exterior Speakers (Optional) |
| 3 Crank-Out windows to provide ventilation and protect from rain | 9 13.5K BTU A/C Unit |
| 4 A & E Brand Seamless Awning | 10 Smooth Fiberglass Compartment Doors with Bulb Seals |
| 5 30" Wide Entry Door | 11 Heated and Enclosed Fresh Water Tank |
| 6 Diamond Plate Rock Guard | |

wildwood le non-slide travel trailers

T19BH

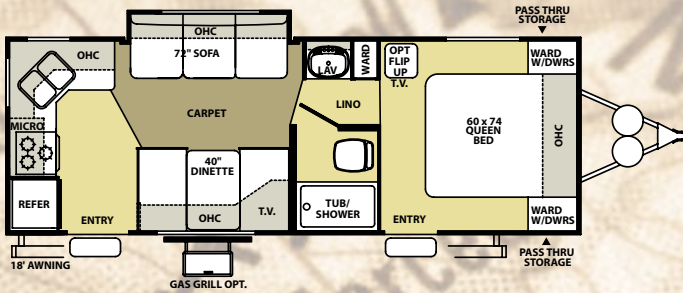


T27RB

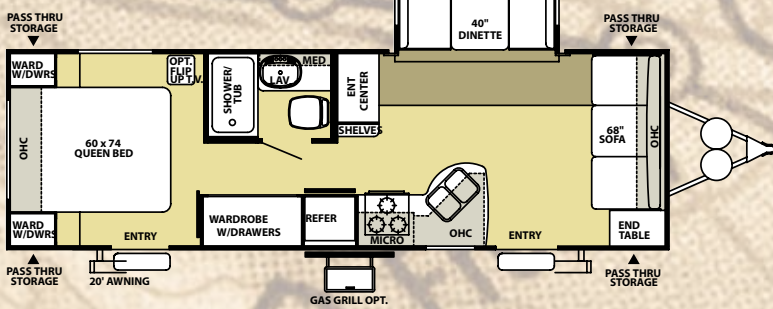


wildwood le slide-out travel trailers

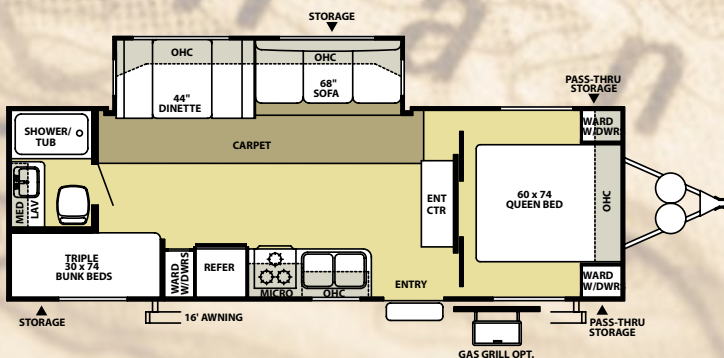
T25RKS



T26FLS

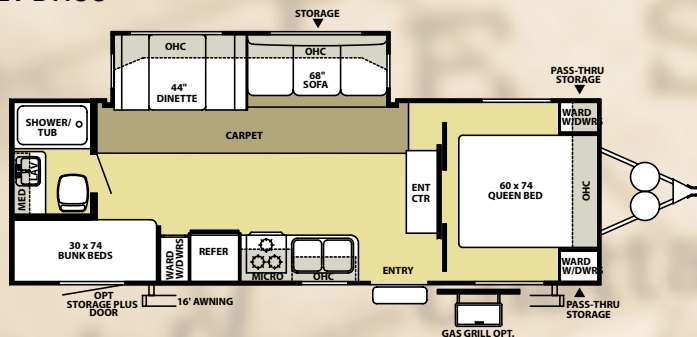


T26TBSS

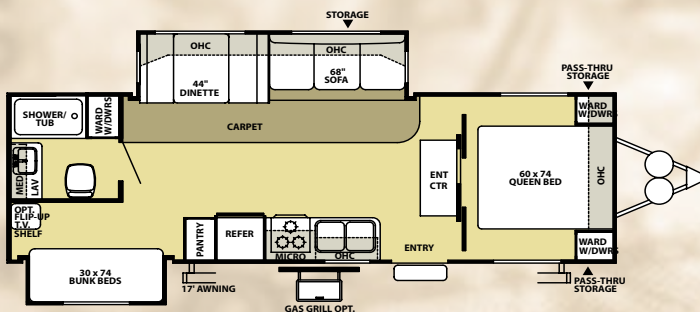


The Rear Slide in the Wildwood LE T29BHBS provides plenty of room and privacy for your family and guests. (Shown with Blue Interior.)

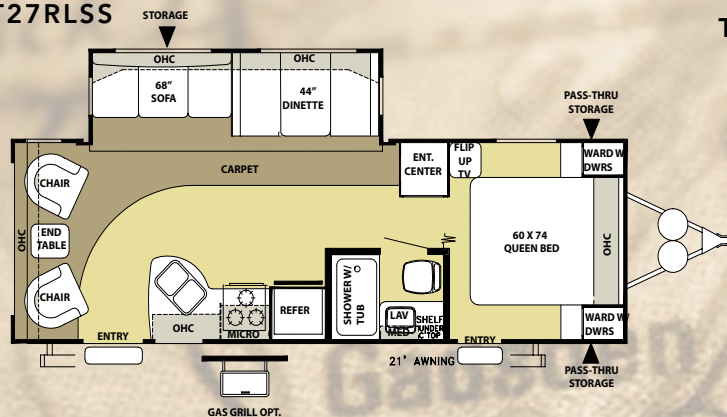
T27BHSS



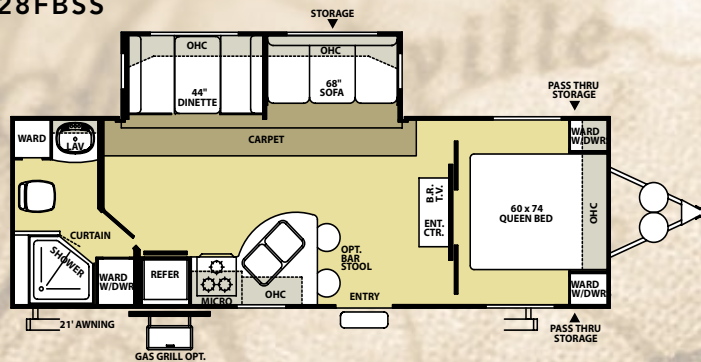
T27BHBS



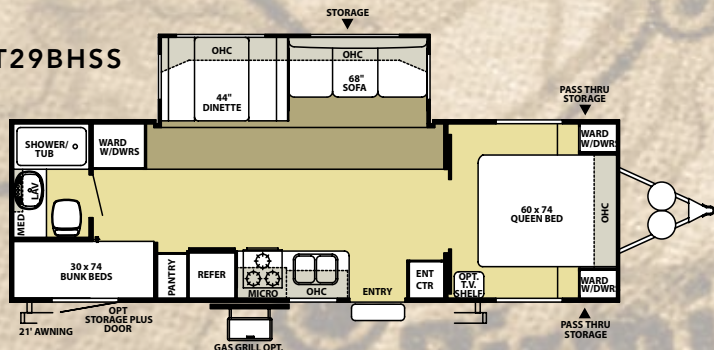
T27RLSS



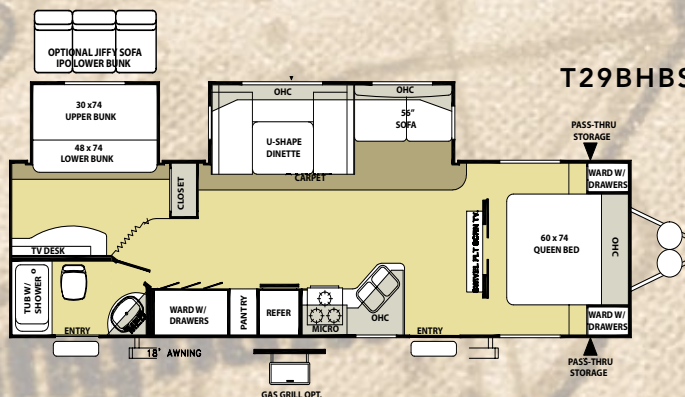
T28FBSS



T29BHSS



T29BHBS



Wildwood LE TT NON-SLIDE MODELS SLIDE MODELS

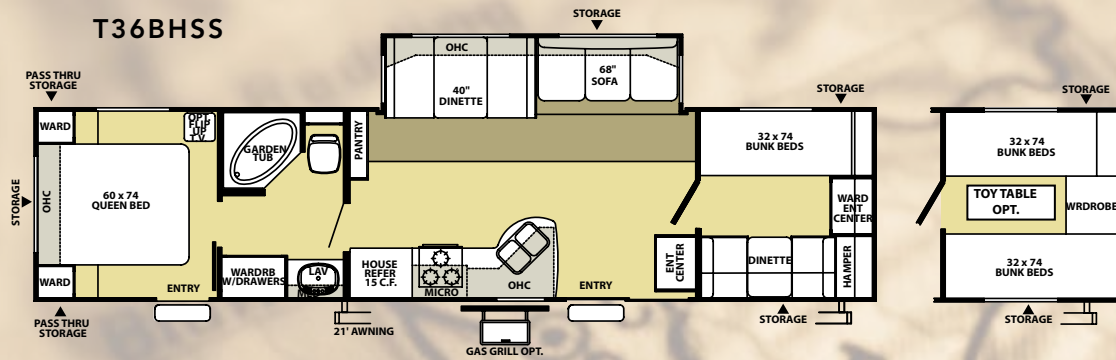
| | 19BH | 27RB | 25RKS | 26FLS | 26TBSS | 27BHSS | 27BHBS | 27RLSS | 28FBSS | 29BHSS |
|-----------------------|--------|--------|--------|--------|--------|--------|--------|--------|--------|--------|
| Hitch Weight (lb) | 415 | 590 | 520 | 810 | 805 | 680 | 685 | 680 | 900 | 590 |
| Axle Weight | 3395 | 4260 | 4330 | 4970 | 5075 | 5060 | 5915 | 5230 | 5110 | 5650 |
| Dry Ship Weight | 3810 | 4850 | 4850 | 5780 | 5880 | 5740 | 6600 | 5910 | 6010 | 6240 |
| GVWR | 7415 | 7870 | 7520 | 7810 | 7805 | 7680 | 10845 | 7680 | 7900 | 10750 |
| CCC (Cargo Capacity) | 3605 | 3020 | 2232 | 1592 | 1925 | 1502 | 4245 | 1332 | 1452 | 4131 |
| Ext Length | 21' 6" | 29' 5" | 26' 4" | 29' 7" | 28' 9" | 28' 4" | 30' 2" | 31' 1" | 30' 3" | 31' 1" |
| Ext Height | 10' 6" | 10' 6" | 10' 7" | 10' 7" | 10' 7" | 10' 7" | 10' 7" | 10' 7" | 10' 7" | 10' 7" |
| Int Height | 80" | 80" | 80" | 80" | 80" | 80" | 80" | 80" | 80" | 80" |
| Fresh Water Cap (gal) | 50 | 50 | 50 | 50 | 50 | 50 | 50 | 50 | 50 | 50 |
| Black Water Cap (gal) | 32 | 32 | 32 | 35 | 35 | 32 | 35 | 35 | 32 | 32 |
| Grey Water Cap (gal) | 35 | 35 | 43 | 35 | 35 | 35 | 35 | 35 | 32 | 35 |
| Tire Size (in) | 14" | 15" | 15" | 15" | 15" | 15" | 15" | 15" | 15" | 15" |
| Awning Size (ft) | 12' | 12' | 18' | 20' | 16' | 16' | 17' | 21' | 21' | 21' |

All lengths include hitch and bumper.

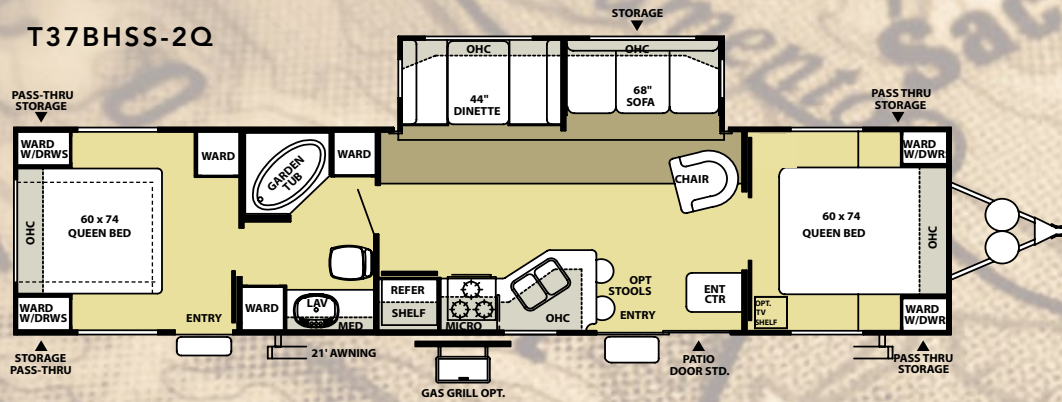
All lengths include hitch and bumper.

wildwood le slide-out travel trailers cont.

T36BHSS

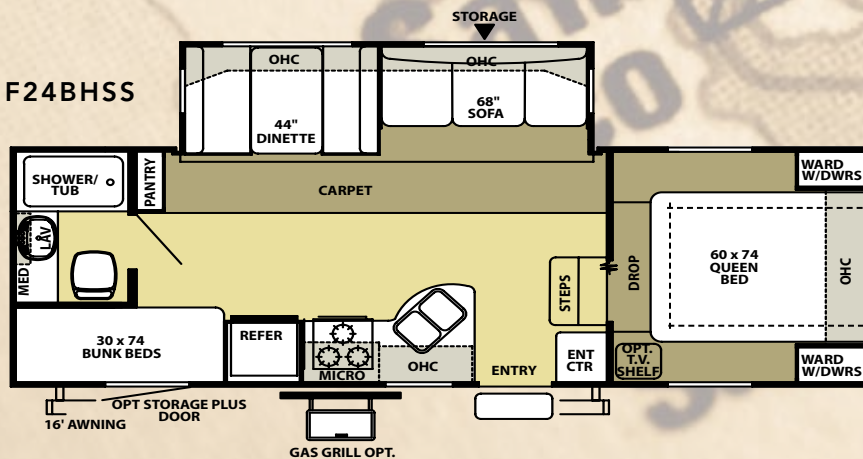


T37BHSS-2Q



wildwood le fifth wheel

F24BHSS



CONSTRUCTION AND EXTERIOR

- 3/8" Walk-on Roof Decking
- Diamond Plate Rockguard (Travel Trailers)
- Radius Baggage Doors with Thumb Pulls and Holdbacks
- Hose Carrier Bumper with End Caps
- Full Pass Through Storage (per floorplan)
- A & E Awning with one piece vinyl
- Radius Clamp Ring Jalousie Windows
- E-Z Open Entry Step
- Fiberglass Entrance and Baggage Doors
- Steel Framed 30" Smooth Fiberglass Main Entry Door
- Sofa Exterior Storage Door
- 20-lb LP Bottles with Cover
- Lockable Exterior Range Vent Cover
- Fender Skirts
- Powder Coated I-beam frame
- Cambered Chassis
- 5/8" 5-Ply Tongue and Groove Plywood Floor Decking
- 2" x 3" Floor Joists 12" on Center
- Enclosed Fresh Water Tank in a Heated Compartment
- 6-Gal. LP Water Heater
- Water Heater By-pass
- Seamless Roto-cast Holding Tanks
- 2" Wall Construction 16" (or less) on Center
- R-7 Fiberglass Insulation Throughout
- 13 ply Cross Micro-Laminated Beam Header above Slide-outs
- Double Wipe Slide-out Seal (Slide-out models)
- Electric Slide-Out Systems (Flush Floor)
- Seamless Roof with 12-Year Warranty
- 5" Bowed Truss Roof Rafters
- Arched-Mortise & Tenon Wood Cabinet Doors
- Swing Arm Entry Assist Handle

KITCHEN

- 80" Interior Height Travel Trailers (84" Fifth Wheel and SRV models)
- Dometic® Double Door Refrigerator
- Deep Basin 60/40 Residential Style Sink
- Microwave with Carousel
- Oven
- 3-Burner, High Output Range
- Range Hood with 12-Volt Exhaust Fan and Light
- Armstrong® ToughGuard™ Flooring
- Rounded Counter Tops with Matching Edge
- Solid Wood Drawers
- Pantry Storage (per floorplan)
- Knife Rack
- Flip-Down Silverware Storage under Sink (where applicable)
- Large Overhead Cabinets
- Wall-Mounted Systems Monitor Panel
- High Rise Kitchen Faucet
- Brushed Nickel Hardware
- Flip Down Silverware Storage under Sink (Where Applicable)

LIVING ROOM

- 80" Interior Height Travel Trailers (84" Fifth Wheel models)
- 69" Interior Slide Height (Slide-out models)
- 13,500 BTU Roof Air Conditioner
- Swivel Rocker(s) (per floorplan)
- Flip Down Storage under Sofa (n/a sofa hide-a-bed)
- Stain Resistant Carpet w/ Padding
- Extra Large 44" Pedestal Booth Dinette (most Slide-out models)
- Large Dinette Picture Window
- TV Antenna and Booster
- AM/FM Stereo w/ CD and 4 Cube Speakers
- Full Length Extra Large Overhead Cabinets (Slide-out models)
- Patio Door with Vertical Blinds (36BHSS, 37BHSS2Q)
- Swing-Arm Wall Sconce with Pleated Shade
- 25K BTU Suburban Forced Air DSI Furnace with Thermostat
- In-Floor Rigid Heat Ducting

BEDROOM

- Bedroom Carpet (Fifth Wheel models)
- Strut Lifted Storage Area under Bed
- Bedside Wardrobes with Drawers
- Bedside A/C Power Outlets (2)
- Solid Bedroom Privacy Doors (Most Models)

BATHROOM

- 12-Volt Power Bath Roof Exhaust Vent
- Wooden Medicine Cabinet with Mirrored Door
- Thetford® Fresh-Water Flush Toilet
- Wall-Mounted Towel Bar
- Hand Towel Ring

SECURITY AND SAFETY

- LP Leak detector
- Smoke Detector
- Carbon Monoxide Detector
- Fire Extinguisher
- Hitch Light (Travel Trailers)
- Amber Patio Light
- Welded Heavy Duty Safety Chains (Travel Trailers)
- Electric Brakes (all wheels)
- GFI Receptacles



"We love watching old movies and the entertainment center in the Wildwood LE is the perfect combination of style and function."

WILDWOOD^{LE} OPTIONS

- Black Frame Safety Glass Tinted Windows
- 6-Gallon Gas/Electric DSI Water Heater
- Exterior LP Gas Grill
- 13,500 or 15,000 BTU Ducted Air w/ Quick Cool
- Outside Shower
- Stabilizer Jacks (Travel Trailer (4) or Fifth Wheel (2))
- Electric Front Jacks (Fifth Wheel models)
- Decorative Wallpaper Border
- Double Hide-A-Bed Sofa
- Insulated Storage Plus Door with Jalousie Window (per floorplan)
- Fitted Designer Bedspread with Queen Bed Comforter
- Bedroom Flip Table
- Cable TV
- Skylight over Tub
- Tub Surround
- 30-lb LP Bottles with Cover and Auto Change (Travel Trailers)
- Two Marine Grade Exterior Speakers
- Living Room Carpet in front of Slide Only
- Jiffy Sofa IPO Lower Bunk (30BHBS and 32BHDS, 29BHBS)
- Sliding Glass Patio Door (29FKSS, 29FLSS)
- Double Sink Cover
- Countertop Extension (per model)

Contact your Wildwood dealer for a complete list of options

The Wildwood LE's Flip-Around Entertainment Center will provide unlimited hours of enjoyment.



Wildwood

by FOREST RIVER

LE

standards and options



246 RLBS 1/2 Ton Towable LA Fifth Wheel

THE WILDWOOD LA: ELEGANT AND AFFORDABLE

The Wildwood LA (Fiberglass Aluma-Frame Laminated Sidewalls) line is designed for value conscious RV'ers who are seeking the contemporary look of fiberglass with an aluminum framed superstructure and vacuum-bonded laminate side walls. In addition to structural differences from the Wildwood LE line, we've added tons of standard features to take your RV experience to the next level. All Wildwood LA's come standard with radius entry doors, tinted windows, 3/8" walk on roof decking, heated and enclosed underbelly, etched glass in the slide-out cabinets, two interior wood grain options and an upgraded exterior graphics package.



Wildwood's Best-Selling Fifth Wheel Bedroom shown with Sage Interior.
Available in LA Models: F246 RLBS, F316 RKBS, F326 RLBS, and F346 BHBS.



Heated and enclosed underbelly protects the undercarriage and provides a sturdy ride.



The Latest Technology ZX-75 AM/FM Radio with CD and DVD Player, MP-3 & SD Card Hook-Up.



E-Z Lube™ Axles for easy greasing of wheel bearings without disassembly.



Dometic™ One-Touch Electric Awning. The push of a button Extends and Retracts your Awning, with no need to step Outside



Autumn Cherry Wood Package with Sage Decor



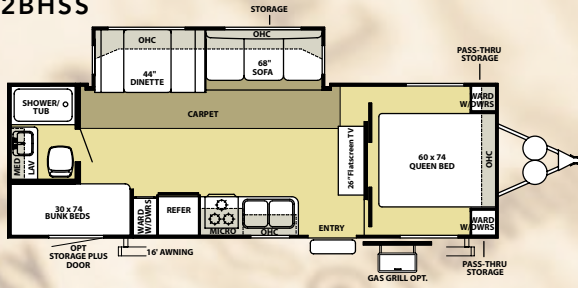
- | | |
|--------------------------------------|--|
| 1 "Aluma Frame" Fiberglass Sidewalls | 7 Swing Arm Entry Assist Handle |
| 2 Black Frame Tinted Windows | 8 3/8" Full Service Walk on Roof Decking |
| 3 Heated and Enclosed Underbelly | 9 Ultra Lube Axles |
| 4 30" Wide Radius Entry Door | 10 A/E Dometic One-Touch Electric Awning |
| 5 ABS Molded Fender Skirts | 11 6 Gal. Gas/Electric DSI Water Heater |
| 6 Hitch Light | 12 Triple Entry Step |



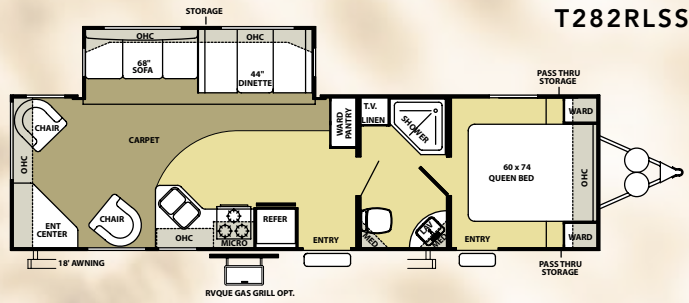
312QBBS Shown with Tan Interior/Fulton Cherry Wood Package

- | | |
|---|---|
| 1 Solid Wood Raised Panel Upper Doors | 8 Raised panel Refer Insert |
| 2 (2) Storage Doors at the Base of Dinettes | 9 Plank Wood Linoleum Armstrong Flooring |
| 3 Etched Glass Overhead Doors in Slide-out | 10 Matching Edge Countertops |
| 4 High-rise Faucet with 60/40 Deep Basin Sink | 11 26-Inch Flatscreen LCD/HD TV (Per Floorplan) |
| 5 (4) Cube Speaker Sound System | 12 Metal Drawer Guides |
| 6 Storage Access Under Sofa | 13 67" Interior Height in Slide-Out |
| 7 80" Interior Height | |

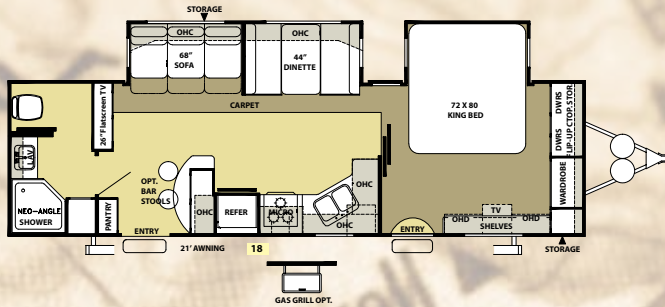
T272BHSS



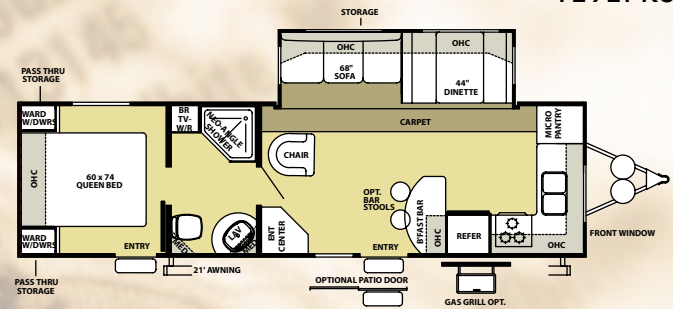
T282RLSS



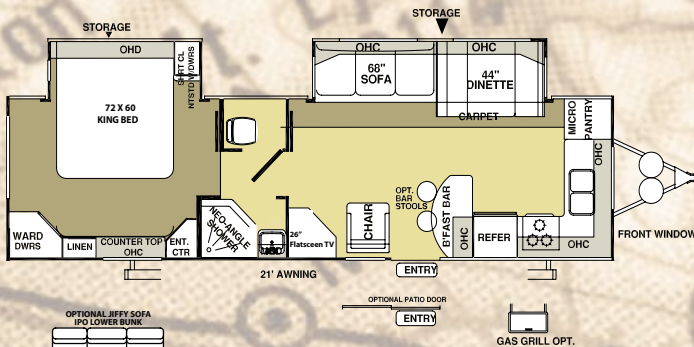
T292FBDS



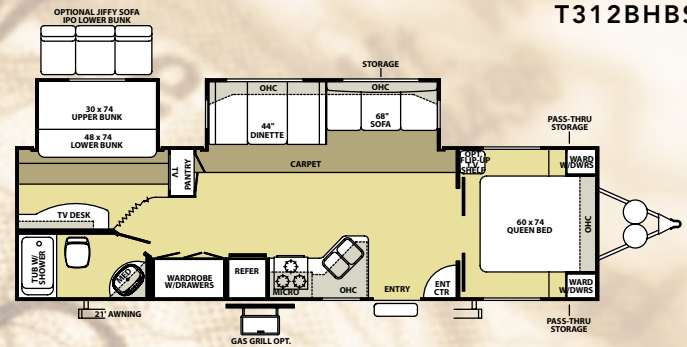
T292FKSS



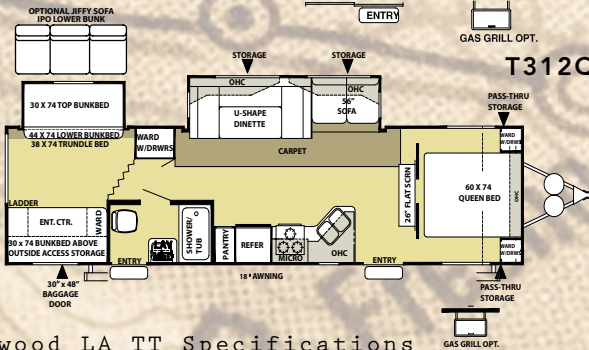
T292FKDS



T312BHBS



T312QBBS



Wildwood LA TT Specifications

| | 272BHSS | 282RLSS | 292FBDS | 292FKSS | 292FKDS | 312BHBS | 312QBBS |
|-----------------------|---------|---------|----------|---------|---------|---------|---------|
| Hitch Weight (lb) | 750 | 950 | 975 | 965 | 1125 | 825 | 820 |
| Axle Weight | 5290 | 6115 | 6830 | 5945 | 6550 | 6580 | 7235 |
| Dry Ship Weight | 6040 | 7065 | 7805 | 6910 | 7670 | 7405 | 8055 |
| GVWR | 7750 | 11110 | 11135 | 11125 | 11285 | 10985 | 10980 |
| CCC (Cargo Capacity) | 1251 | 3586 | 3330 | 4215 | 3155 | 3121 | 2466 |
| Ext Length | 28' 9" | 34' 2" | 33' 4.5" | 33' 3" | 33' 10" | 34' 2" | 35' 6" |
| Ext Height | 10' 7" | 10' 7" | 10' 7" | 10' 7" | 10' 7" | 10' 7" | 10' 7" |
| Int Height | 80" | 80" | 80" | 80" | 80" | 80" | 80" |
| Fresh Water Cap (gal) | 42 | 42 | 42 | 42 | 42 | 42 | 42 |
| Black Water Cap (gal) | 32 | 32 | 32 | 35 | 32 | 32 | 32 |
| Grey Water Cap (gal) | 35 | 35 | 64 | 70 | 64 | 35 | 64 |
| Tire Size (in) | 15" | 15" | 15" | 15" | 15" | 15" | 15" |
| Awning Size (ft) | 16' | 18' | 18' | 21' | 21' | 21' | 18' |

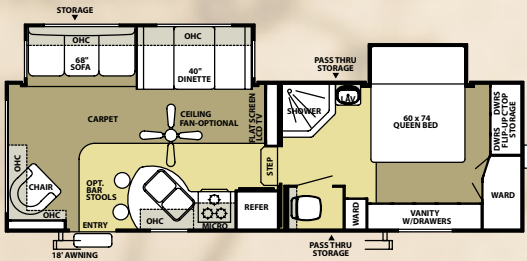
All lengths include hitch and bumper.



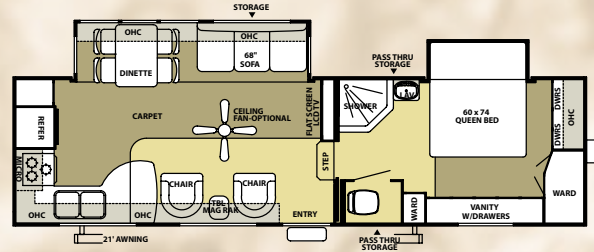
Model 336QBDS Fifth Wheel with front bunks and optional Jiffy Sofa.

wildwood la fifth wheels

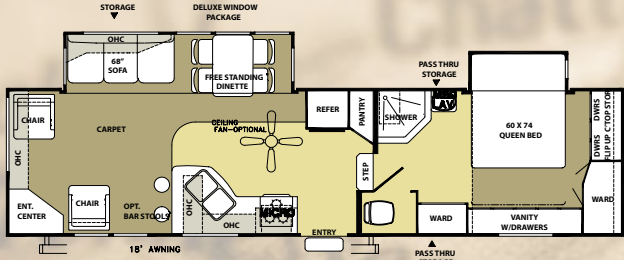
F246RLBS



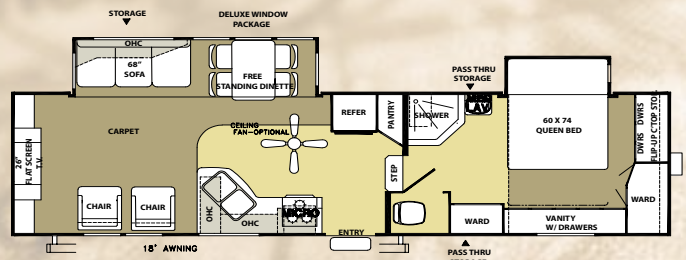
F316RKBS



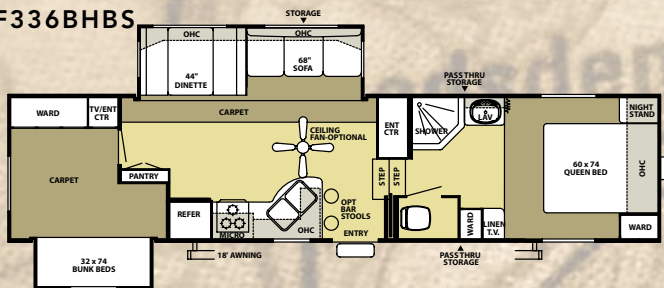
F336RLBS



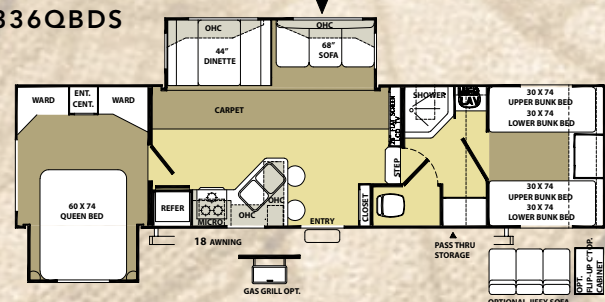
F336RLDS



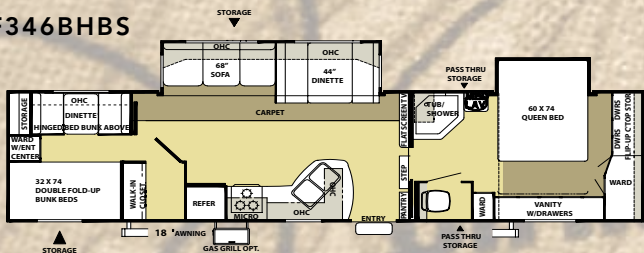
F336BHBS



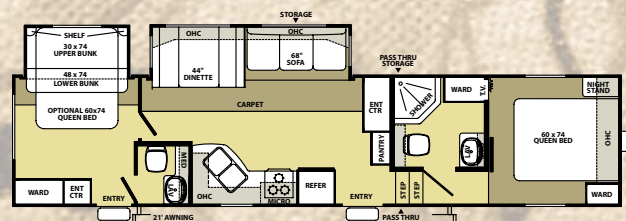
F336QBDS



F346BHBS



F356RBDS



Wildwood LA Fifth Wheel Specifications

| | 246RLBS | 316RKBS | 326RLBS | 336RLDS | 336QBDS | 336BHBS | 346BHBS | 356RBDS |
|-----------------------|---------|---------|----------|----------|---------|---------|---------|---------|
| Hitch Weight (lb) | 1125 | 1575 | 1765 | 1765 | 1635 | 1475 | 2030 | 1420 |
| Axle Weight | 6420 | 6765 | 6910 | 6910 | 7365 | 7395 | 7265 | 7860 |
| Dry Ship Weight | 7545 | 8340 | 8675 | 8675 | 9000 | 8870 | 9295 | 9280 |
| GVWR | 11285 | 11735 | 11925 | 11925 | 11795 | 11635 | 12190 | 11590 |
| CCC (Cargo Capacity) | 3740 | 3395 | 3250 | 3250 | 2340 | 2306 | 2895 | 2310 |
| Ext Length | 28' 6" | 31' 0" | 34' 1.5" | 34' 1.5" | 35' 0" | 35' 10" | 36' 7" | 38' 2" |
| Ext Height | 12' 2" | 12' 2" | 12' 2" | 12' 2" | 12' 2" | 12' 2" | 12' 2" | 12' 2" |
| Int Height | 84" | 84" | 84" | 84" | 84" | 84" | 84" | 84" |
| Fresh Water Cap (gal) | 42 | 42 | 42 | 42 | 42 | 42 | 42 | 42 |
| Black Water Cap (gal) | 35 | 32 | 32 | 32 | 32 | 32 | 32 | 64 |
| Grey Water Cap (gal) | 35 | 64 | 32 | 32 | 64 | 35 | 64 | 64 |
| Tire Size (in) | 15" | 15" | 15" | 15" | 15" | 15" | 15" | 15" |
| Awning Size (ft) | 18' | 21' | 18' | 18' | 18' | 18' | 18' | 21' |

All lengths include hitch and bumper.



Fifth Wheel Hitch Light

88 Degree Turning
Radius Front Cap for
most Short-Bed Pick-Ups

CONSTRUCTION AND EXTERIOR

- Aluminum-framed Vacuum-bonded Laminated Sidewalls
- Tinted Black Frame Windows
- 3/8" Walk-on Roof Decking
- 30" Smooth Fiberglass Radius Entry Doors (26" Secondary)
- Diamond Plate Rockguard (Travel Trailers)
- Radius Baggage Doors with Thumb Pulls and Holdbacks
- Swing Arm Entry Assist Handle
- Hose Carrier Bumper with End Caps
- Full Pass Through Storage (per floorplan)
- Dometic™ One Touch Electric Awning
- Radius Clamp Ring Jalousie Windows
- E-Z Open Entry Step
- Lockable Exterior Range Vent Cover
- Upgraded ABS Fender Skirts
- Tandem Axles w/15" Tires
- Powder Coated I-beam Frame
- Cambered Chassis
- 5/8" 5-Ply Tongue and Groove Plywood Floor Decking
- 2" x 3" Floor Joists 12" on Center
- Water Heater By-pass
- Seamless Roto-cast Holding Tanks
- R-7 Fiberglass Insulation (Floors and Ceiling)
- R-9 Insulation (Sidewalls)
- Power Slide-Out Systems (Flush Floor)
- Seamless Roof with 12-Year Warranty
- Drip Rails with Downspouts
- 5" Bowed Truss Roof Rafters
- Arched-Mortise & Tenon Wood Cabinet Doors

KITCHEN

- 80" Interior Height Travel Trailers (84" Fifth Wheel Models)
- Dometic® Double Door Refrigerator
- Deep Basin 60/40 Residential Sink
- Microwave with Carousel
- 3-Burner, High Output Range
- Range Hood with 12-Volt Exhaust Fan and Light
- Armstrong® ToughGuard™ Linoleum Flooring
- Solid Wood Drawers
- Solid Wood Raised Panel Upper Cabinet Doors
- Pantry Storage (per floorplan)
- Knife Rack
- Flip-Down Silverware Storage under Sink (where applicable)
- Large Overhead Cabinets
- Wall-Mounted Systems Monitor Panel
- High Rise Faucett
- Raised Panel Oak Refer Inserts
- Nickel Hardware
- Pantry Storage (Per Floorplan)
- Knife Rack
- Flip-Down Silverware Storage under Sink (where applicable)
- Large Overhead Cabinets

LIVING ROOM

- 69" Interior Slide Height
- 13,500 BTU Ducted Roof Air Conditioner
- Swivel Rocker(s) (per floorplan)
- Solid Wood Raised Panel Upper Cabinet Doors
- Flip Down Storage under Sofa (n/a sofa hide-a-bed)
- Stain Resistant Carpet w/ Padding
- Solid Wood Drawers
- Extra Large 44" Pedestal Booth Dinette
- Large Dinette Picture Window
- TV Antenna and Booster
- AM/FM Stereo w/ CD/DVD and 4 Cube Speakers
- Cable TV and Satellite Prep
- Extra Large Overhead Cabinets w/ Etched Glass
- Swing-Arm Wall Sconce with Pleated Shade
- 30 or 35K BTU Suburban Forced Air DSI Furnace with Thermostat (Per Floorplan)
- In-Floor Rigid Heat Ducting
- Cabinet Doors on Each Dinette Base

BEDROOM

- Bedroom Carpet (Fifth Wheel Models)
- Strut Lifted Storage Area under Bed
- Oversized Bunks (most models)
- Bedside Wardrobes with Drawers
- 4 Bedroom Drawers
- Solid Bedroom Privacy Doors (Most Models)

BATHROOM

- Glass Shower Door (Neo-angle Showers)
- 12-Volt Power Bath Roof Exhaust Vent
- Wooden Medicine Cabinet with Mirrored Door
- Thetford® China Foot Flush Toilet

SECURITY AND SAFETY

- LP Leak detector
- Smoke Detector
- Carbon Monoxide Detector
- Fire Extinguisher
- Hitch Light (Travel Trailers)
- Amber Patio Light
- Welded Heavy Duty Safety Chains (Travel Trailers)
- Electric Brakes (all wheels)
- GFI Receptacles

WILDWOOD LA OPTIONS

- Fiberglass Front Cap w/ Docking Light
- Free Standing Dinette w/4 Chairs
- Living Room Ceiling Paddle Fan (5th Wheel Models)
- Slide Room Awning
- Roof Ladder
- Black Frame Safety Glass Tinted Windows

- Extra Large 8 cu ft Double Door Refrigerator
- Exterior LP Gas Grill
- 13,500 or 15,000 BTU Ducted Air w/ Quick Cool
- Outside Shower
- Stabilizer Jacks (Travel Trailer or Fifth Wheel)
- Electric Front Jacks (Fifth Wheel models)
- Decorative Wallpaper Border
- Double Hide-A-Bed Sofa
- Insulated Storage Plus Door with Jalousie Window (272BHSS)
- Fitted Bedspread with Reverse Sham
- Bedroom Flip Table
- Jiffy Sofa IPO Lower Bunk (312BHBS, 312QBBS, 356RBDS)
- Cable TV
- Skylight over Tub
- Tub Surround
- Two Marine Grade Exterior Speakers
- Slide Room Awning(s)
- Phone Jack
- Living Room Carpet in front of Slide Only
- Countertop Extension (per model)
- Additional Sink Covers

Contact your Wildwood dealer for a complete list of options

WILDWOOD LA DELUXE PACKAGE

- new color coordinated countertops
- new swing-arm entry assist handle
- four cube speakers in living area
- china foot flush toilet
- ultra-lube™ axle
- high-rise faucet in kitchen
- raised panel refer insert
- cabinet doors on each dinette base
- cable and satellite tv prep
- enclosed and heated underbelly
- Plank Wood Linoleum Flooring

Wildwood

by FOREST RIVER

LA

standards and options

PRE-DELIVERY INSPECTION FACILITIES



THAT'S 20,000 SQUARE FEET OF QUALITY ASSURANCE.

THE BARE ESSENTIALS FOR A PREMIUM PRODUCT.

Brought online in 2005, Forest River is proud of its state-of-the-art test facility. This beautiful building blends many of the old tried and true methods of testing our diverse types of RVs with new innovative ways of solving quality issues. Being centrally located to most Forest River manufacturing facilities, this 20,000 square foot PDI (Pre-delivery Inspection) test building gives immediate daily feedback to individual managers. This assures the production facilities that nothing has slipped by the plant's quality assurance personnel and the units are "green" and ready to ship.

Forest River Encourages You to Buy Locally

Forest River, Inc. strongly encourages our retail customers to purchase from their local dealership whenever possible due to the following factors:

- Our Dealers are as a rule, independently owned and operated businesses. Outside of those customers they personally sold products to, they are not contractually obligated to perform warranty service on Forest River products that were purchased elsewhere. There may be an occasion that you would be required to return to the point of purchase to satisfy warranty requirements.
- Although many dealerships will eventually service products not purchased at their place of business, they will usually take care of their customers and other Forest River customers who are traveling away from their local dealer as they would their own.
- Local purchases allow a customer to establish a relationship with a dealer close to home. This relationship provides the customer with a convenient location for service and support from a "home town" professional.
- The opportunity for a thorough PDI (Pre Delivery Inspection) and product orientation is an additional benefit of buying from your local dealer. Further providing the opportunity for refresher courses or the ability to get questions answered much more conveniently.
- For our Canadian customers, there are also requirements which must be met to bring an RV purchased out of the country to their home. Although not insurmountable, these requirements may involve such things as additional inspections and certifications, taxes and fees. Your local Canadian Dealer is a professional at meeting these requirements.

Forest River's goal is for all RV Owners to fully enjoy their RV experience. In light of this goal, and considering the advantages of buying local, we encourage you to be thorough when determining what product to purchase and which dealer to purchase it from as both are key to your ultimate satisfaction and the realization of your dreams.

PEACE OF MIND.

Forest River has yet another exclusive feature to offer: One year of free roadside assistance will be given to every 2008 Wildwood customer. This is just one more way to say "Thank you" and to ensure an enjoyable traveling experience.

YOUR WILDWOOD DEALER



Forest River, Inc.
914 C.R. 1
Elkhart, IN 46514
(574) 533-5934
www.forestriverinc.com
www.forestriveraccessories.com