

GRAND LODGE

LODGE

Wildwood  
DLX

— by Wildwood —

# Wildwood **LODGE GRAND LODGE** DLX

— by Wildwood —  
YOUR ULTIMATE CHOICE IN DESTINATION CAMPING



THE QUALITY YOU EXPECT, THE LUXURY YOU DESERVE.





39FDEN: Shown in Forest





Welcome to the Wildwood DLX, this series is all about family fun and functionality. The Wildwood DLX trailer is the ultimate in destination living at a great value. The DLX is packed with great features including: a Serta Bradley mattress, black tinted safety glass windows, surround sound with TV hookup and much more. Comfort, convenience and quality is what the Wildwood Deluxe is all about.

402QBQ: Shown in Cappuccino



402QBQ: bunk room



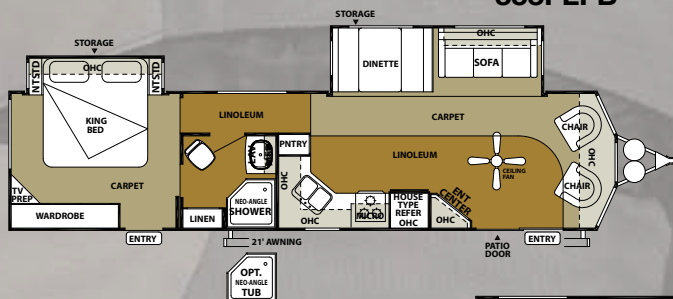


# Wildwood

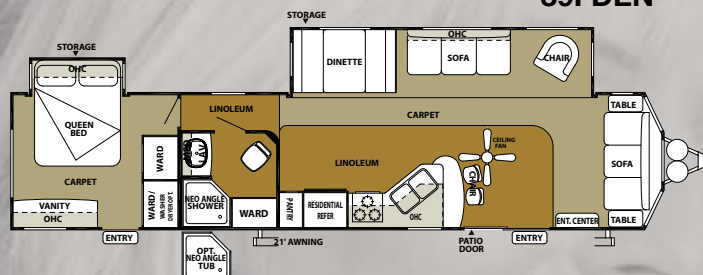
## DLX

## DESTINATION TRAILERS

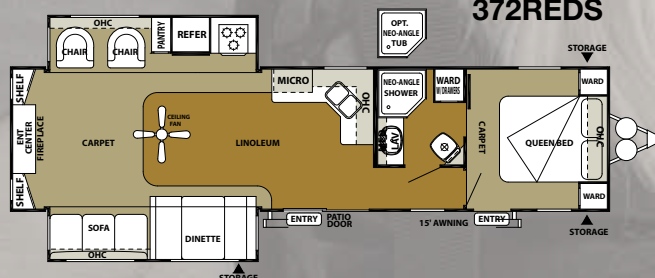
353FLFB



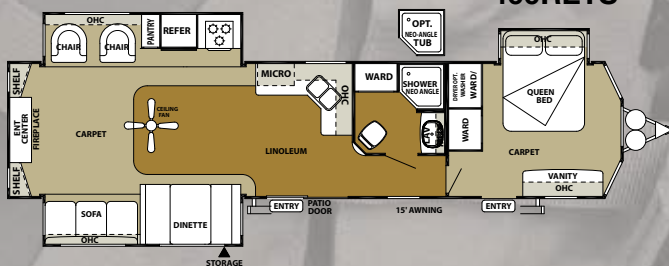
39FDEN



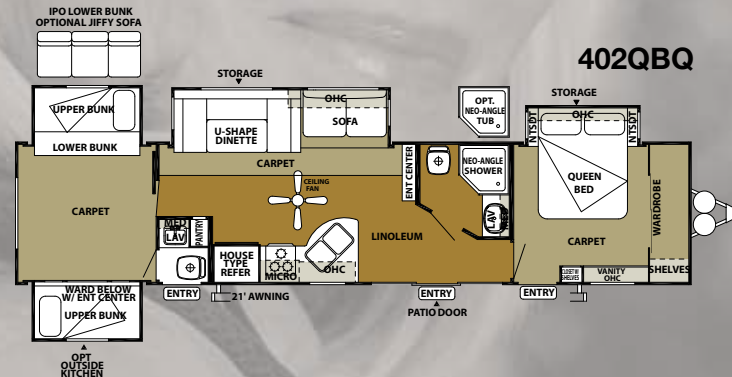
372REDS



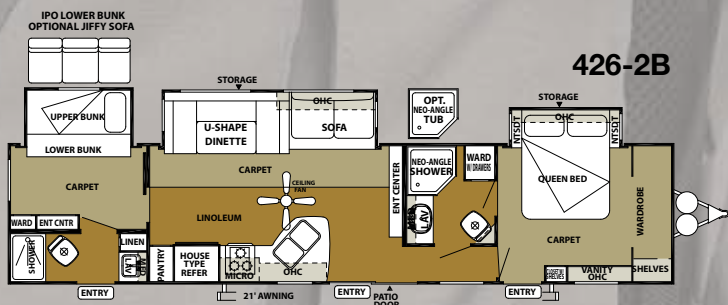
400RETS



402QBQ



426-2B



## DESTINATION TRAILERS SPECIFICATIONS

	353FLFB	372REDS	39FDEN	400RETS	402QBQ	426-2B
HITCH WEIGHT lb	1290	1005	1490	1375	1035	1365
AXLE WEIGHT	7330	8035	8235	8685	9550	8810
DRY SHIP WEIGHT	8620	9040	9725	10060	10585	10175
CCC cargo capacity	2770	2066	1866	1656	2390	1290
EXT LENGTH	38' 6"	38' 7"	40' 10"	40' 11"	40' 8"	40' 5"
EXT HEIGHT	10' 9"	10' 1"	12' 3"	10' 9"	12' 3"	12' 3"
INT HEIGHT	84"	84"	84"	84"	84"	84"
FRESH WATER CAP gal	42	42	50	42	42	50
BLACK WATER CAP gal	43	43	38	43	54	77
GREY WATER CAP gal	43	43	38	43	74	77
TIRE SIZE in	15"	15"	15"	15"	16"	15"
MANUAL AWNING SIZE ft	21'	15'	21'	21'	21'	21'



## WILDWOOD DLX STANDARDS / OPTIONS AND INTERIOR FEATURES

### COMFORT AND CONVENIENCE

- 84" interior height
- Black framed tinted safety glass windows
- Powered self supporting slide rooms
- Pleated night shades
- Triple sealed slide outs
- Water heater by-pass
- 6-gallon gas/electric DSI water heater
- Large pass thru storage (per floorplan)
- Ducted Dometic® 13,500 BTU central air conditioner w/ quick cool feature
- In-floor ducted heat w/ 35K BTU furnace
- Stain resistant carpet with padding
- Flush-floor slide rooms
- Systems monitor panel
- 6' 2" tall slide rooms
- Ultra lube axles
- Solid wood drawer fronts with ball bearing drawer glides
- 2 outside speakers
- Wood plank pattern Beauflor™ Durabac flooring w/ 7 yr. limited warranty

### KITCHEN

- Extra large overhead cabinets
- Raised panel overhead cabinet doors
- 18.5 cu. ft. residential refrigerator with ice maker
- 12-volt power range hood w/ light
- Microwave w/ carousel
- Acrylic 60/40 residential style kitchen sink
- Built in knife holder behind stove
- 3 burner Piezo ignition range oven
- Pull out sprayer faucet at kitchen sink
- Kitchen waste basket
- Pantry with shelves

### LIVING ROOM

- Swivel rocker chair (per floorplan)
- Jensen™ DVD/CD/AM/FM stereo w/ mp3 hook-up
- Cathedral ceiling w/ ceiling fan
- Surround sound w/ TV hook-up
- Digital TV antenna w/ booster
- Cable and satellite ready

- Extra large picture window at dinette
- Extra large dinette for more comfortable dining and sleeping
- Decorative lights in slide-out
- Cell phone caddy

### BEDROOM

- Serta Bradley Mattress
- Fitted bedspreads and headboard
- Lift-up beds w/ gas struts
- Cable TV hook-up
- Stain resistant carpet w/ padding
- Solid privacy doors

### BATHROOM

- Built-in wood medicine cabinet and mirror
- Ceiling light w/ convenient wall switch
- Foot flush toilet(s)
- ABS tub or shower w/ one-piece surround

### EXTERIOR

- Smooth fiberglass radius baggage doors w/ thumb pulls and holdbacks
- A & E one- piece vinyl awning
- Diamond plate rock guard

- Patio door w/ screen
- Steel framed 30" smooth fiberglass radius entry door
- 15" radial tires
- Entry assist handle
- 2-30 lb. LP tanks w/ automatic change over
- EZ access LP tank cover
- City water fill

### CONSTRUCTION

- 10" Extruded I-beam frame
- Cambered chassis
- Fresh water tank
- 2" x 3" floor joists 12" on center
- 5/8" 5-ply tongue and groove plywood floor decking
- 2" wall studs maximum 16" on center
- 5" bowed truss roof rafters
- 3/8" walk-on roof decking
- Seamless one-piece rubber roof w/ 12 yr. warranty
- R-7 insulation

### SECURITY AND SAFETY

- Smoke detector
- Fire extinguisher
- Carbon monoxide detector
- LP gas leak detector
- Amber porch light w/ interior switch

- Screen door w/ safety latch
- GFI receptacles and covered patio outlet
- Welded heavy duty safety chains
- Hitch light
- Lockable fiberglass radius baggage doors
- ANSI 119.5
- Certified to meet all National Highway Traffic Safety Administration Specifications

### POPULAR OPTIONS

- Gel coat fiberglass exterior
- 10-gallon gas/electric DSI water heater
- Skylight over tub
- Air hide-a-bed sofa
- Outside kitchen (402QBQ only)
- Free standing dinette w/ 4 chairs
- Outside shower

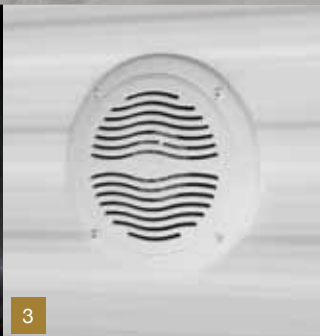
Contact your Wildwood DLX dealer for a complete list of options



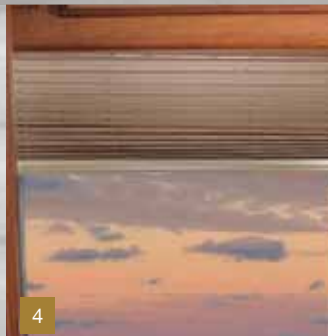
1



2



3



4



5

>1 Serta Bradley mattress for a good nights sleep >2 Residential refrigerator with ice maker  
>3 Outside speakers >4 Night shades >5 Quality hand crafted woodwork



# LODGE

## DESTINATION TRAILERS

404FB: Shown in Leather



PAGE: 5

Shown with optional TV.

404FB: kitchen

404FB: bathroom



The Lodge series is everything you want in destination living. It comes with a standard patio door for easy access and 84" of ceiling height to give you enough room to relax in comfort. And with features like the Beauflor (7 yr. warranty), Shaw carpet, free standing range and your choice of four gorgeous decors, you might want to extend you stay. The Lodge lives up to its name in quality, comfort and design.

404FB: Bedroom



404FB: bunk room



**GRAND LODGE**  
*by Wildwood*

## DESTINATION TRAILERS

408REDS: Shown in Cappuccino



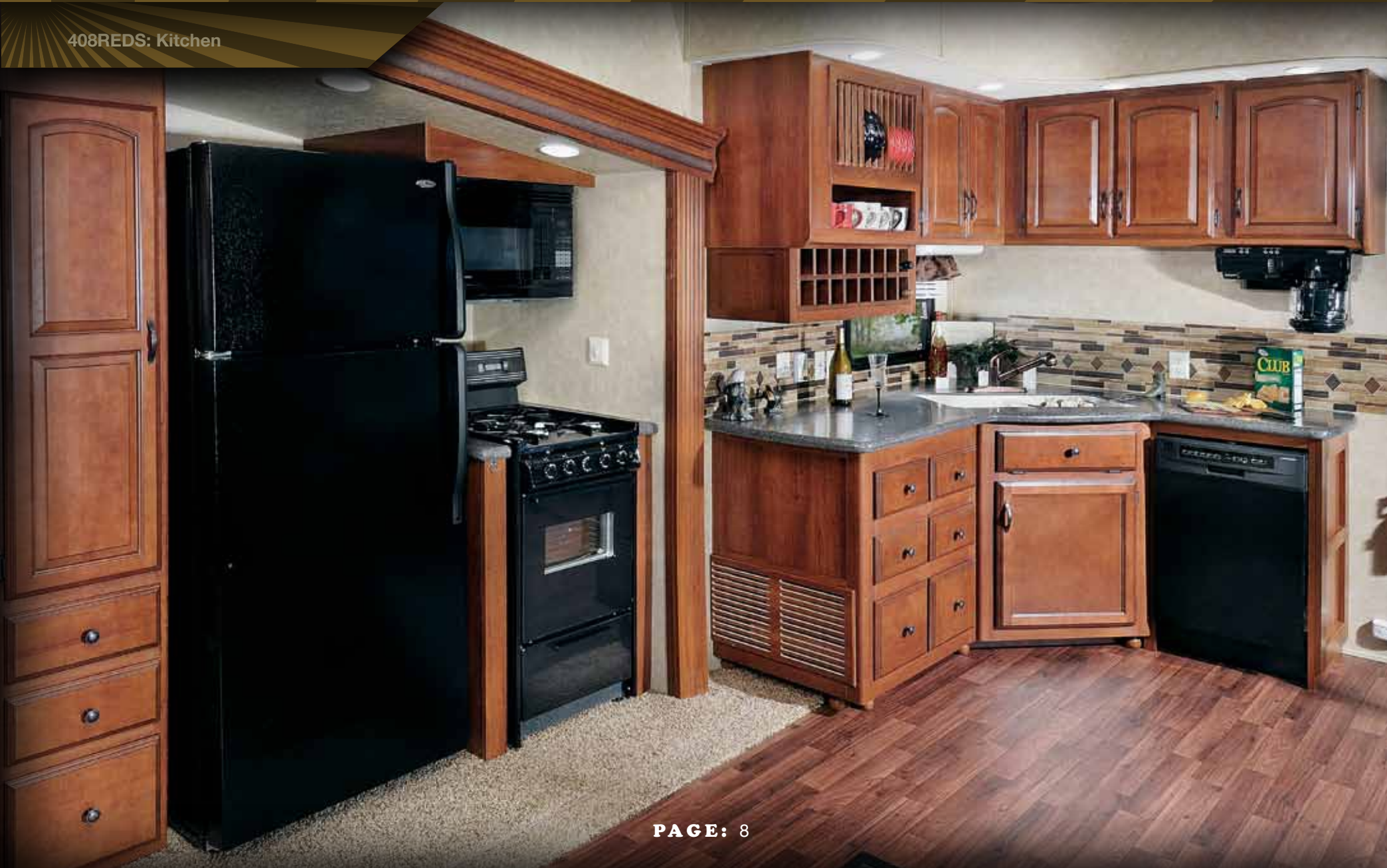
PAGE: 7

Shown with optional TV.



With the Grand Lodge series, you know you've arrived in luxury. No matter where your destination takes you these trailers will always give you the sense of home. Every attention to detail has been accounted for, plush with elegant upgrades, the Grand Lodge really sets itself apart. Everything from the decorative pillows, residential comforter in the master bedroom to the stone facade around the fireplace and wine rack in the kitchen, these features will give you the style and comfort you deserve. The Grand Lodge is the ultimate choice in destination living.

408REDS: Kitchen





408REDS: Bedroom





Beautiful on the inside and durable on the outside, the Lodge and Grand Lodge are well crafted throughout. Using only the best materials as seen in the flooring below, our commitment to quality ensures that your unit is well built. Look at the construction cutout below and you will see Wildwood has a commitment to quality.



WILDWOOD'S FLOORING



COMPETITOR'S



Form follows function. At Wildwood, quality is serious business and it shows. Our commitment to quality includes: {1} a one piece rubber roof with 12 year warranty {2} 20 gallon water heater {3} the floor in Wildwood is 5/8" tongue and groove plywood. Most of our competitors use OSB board which is not as durable as our real wood floor. {4} the queen bed on gas assist struts is shown lifted to access the under bed storage area.

- |   |  |  |
|---|--|--|
| <b>A</b> Triple entry steps                                     | <b>H</b> 5/8" tongue and groove plywood flooring | <b>P</b> R-7 fiberglass insulation throughout      |
| <b>B</b> 102" exterior width for increased living space         | <b>I</b> Carpet w/ padding                       | <b>Q</b> Dual bottle cover w/ easy access          |
| <b>C</b> Tinted windows   | <b>J</b> Fender skirt                            | <b>R</b> 5" truss roof rafters 16" on center       |
| <b>D</b> Hitch light  | <b>K</b> 2" wall studs 16" on center             | <b>S</b> Scare light                               |
| <b>E</b> Standard patio door                                    | <b>L</b> 2"x 3" floor joists 12" on center       | <b>T</b> 024 aluminum siding (fiberglass opt.)     |
| <b>F</b> 15" radial tires (16" w/ optional fiberglass exterior) | <b>M</b> 15K BTU A/C (13.5K on XL)               | <b>U</b> 98" interior ceiling height (Grand Lodge) |
| <b>G</b> 12" I-beam powder coated plywood flooring              | <b>N</b> Seamless rubber roof (12 yr. warranty)  | <b>V</b> Triple seal system for slideouts          |
|   | <b>O</b> 3/8" roof decking (full walk-on roof)   |  |





# LODGE

# GRAND LODGE

by Wildwood

## LODGE / GRAND LODGE STANDARDS / OPTIONS AND INTERIOR FEATURES

### COMFORT AND CONVENIENCE

- 102" exterior width for increased living space
- 84" interior height
- Wood plank pattern Beauflor™ w/ 7 yr. limited warranty
- Frost proof garden hose spigot (off door side)
- Black framed tinted glass windows
- WaterPur™ whole house water filtration system
- Water heater by-pass
- Wired and braced for second A/C
- Pleated night shades
- 20-gallon electric water heater
- Ducted Dometic® 15,000 BTU central air conditioner w/ quick cool feature
- In-floor ducted heat w/ 40K BTU furnace
- Shaw stain resistant carpet w/ padding
- Flush-floor hydraulic slide rooms w/ manual override
- Systems monitor panel
- 50 amp electrical service and 65 amp 12-volt converter
- Solid hardwood drawer fronts

### KITCHEN

- Free standing dinette with 4 chairs
- Deluxe window package at dinette
- Extra large raised panel overhead cabinets
- Full extension ball bearing drawer guides
- 20" freestanding 4 burner gas range w/ oven (black)

- 18.5 cu. ft. residential electric refrigerator w/ icemaker (black)
- Microwave w/ carousel and range hood (black)
- Hidden storage beneath dinette seat cushions
- Undermount stonecast 60/40 residential style sink
- Pull out sprayer faucet
- Pantry with shelves
- Self edge countertops throughout

### LIVING ROOM

- Swivel rocker chair(s) (per floorplan)
- Surround sound TV hook-up
- Jensen™ DVD/CD/AM/FM stereo w/ mp3 hook-up
- 4 cube speakers and sub woofer
- Digital TV antenna w/ booster
- Cable and satellite door side hookup
- Glass sliding patio door w/ vertical blinds and screen door
- Coordinating wallpaper border
- Ceiling fan w/ wall switch
- Cell phone caddy

### BEDROOM

- Serta® mattress
- Bedspread w/ headboard
- Bedroom roof vent
- Ceiling fan w/ wall switch
- Comfort Flex (box spring) bed frame
- Under bed storage
- Cable TV hook-up
- Shaw Stain resistant carpet w/ padding
- Solid privacy doors

### BATHROOM

- Neo-Angle shower w/ glass door
- Built-in wood medicine cabinet and mirror
- Ceiling light w/ convenient wall switch
- Full extension ball bearing drawer guides
- China foot flush toilet(s)
- ABS shower w/ one-piece surround
- 12" 10-blade Fantastic Bath Fan™
- Toothbrush holder and towel ring

### EXTERIOR

- Smooth fiberglass radius baggage doors
- Large A & E one-piece vinyl awning
- 15" radial tires (per floorplan)
- 30 lb. double LP tanks w/ automatic change over
- EZ access LP tank cover
- City water fill w/ brass valve
- Swing out assist handle

### CONSTRUCTION

- 12" forged I-beam frame
- Cambered chassis
- Seamless holding tanks
- Color coded water lines
- 2" x 3" floor joists 12" on center
- 5/8" 5-ply tongue and groove plywood floor decking
- 2" wall studs maximum 16" on center
- 5" bowed truss roof rafters
- 3/8" walk-on roof decking

- Seamless one-piece rubber roof w/ 12 year warranty
- Triple sealed slide outs
- R-7 insulation throughout (floors, walls, ceilings, and slide-outs)

### SECURITY AND SAFETY

- Smoke detector
- Fire extinguisher
- Carbon monoxide detector
- LP gas leak detector
- Door latch w/ integral dead bolt lock
- Lighted main entry step w/ interior switch
- Amber porch light w/ interior switch
- Main entry doorside flood light
- GFI receptacles and covered patio outlet
- Welded heavy duty safety chains
- Hitch light
- Lockable fiberglass radius baggage doors
- ANSI 119.5
- Certified to meet all National Highway Traffic Safety Administration Specifications

### POPULAR OPTIONS

- Gelcoat fiberglass exterior
- Skylight over tub
- Garden tub w/ glass door (per floorplan)
- La-Z-Boy® recliners
- Air hide-a-bed sofa
- Detachable hitch
- Outside shower
- 10-gallon gas/electric DSI water heater (IPO 20 gal electric)

### GRAND LODGE UPGRADES OVER LODGE

- 96" (8') interior height
- Cathedral slide (main slide room)
- Dishwasher in kitchen
- Coffee maker
- Knife holder and spice rack behind oven
- Garbage disposal at kitchen sink
- Under mount bathroom sink
- Fluorescent lighting in kitchen
- 3 ceiling paddle fans w/ light kits (110v)
- 110v lighting in coach area ceiling
- Skylights in main slide above dinette w/ shades
- Window above main patio door
- Stone facade around fireplace
- Residential porch light
- Air hide-a-bed in main slide
- Lighting in kitchen soffit
- Wine rack above refrigerator
- Custom designed linen window valances
- Residential master bed comforter
- Decorative pillows
- Washer/dryer prep (standard 408FLFB, optional 408REDS)

### OPTIONAL EQUIPMENT

- La-Z-Boy recliners
- Detachable hitch
- Gel coat exterior upgrade



The Lodge and Grand Lodge series offer a wide range of standards with comfort, style and reliability in mind. Amenities such as the porcelain foot flush toilet, comfort flex box spring, free standing range and much more illustrate just how well appointed these coaches are. Everything has been designed with you in mind.

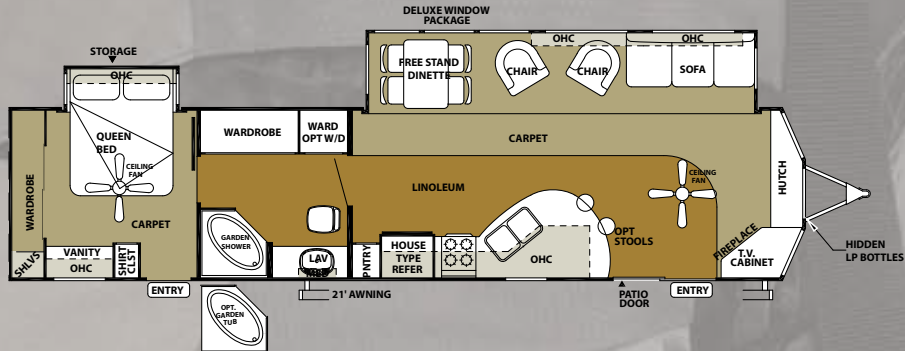


>1 Beauflor (7 yr. warranty) >2 Night shades >3 Porcelain foot flush toilet >4 Comfort flex bed frame  
>5 Water filter >6 Spray faucet >7 Fireplace (per model) >8 Ceiling fan >9 Silverware drawer  
>10 Shaw carpet >11 Free standing range >12 Outside spigot >13 Patio door (std. all models)  
>14 Fantastic fan

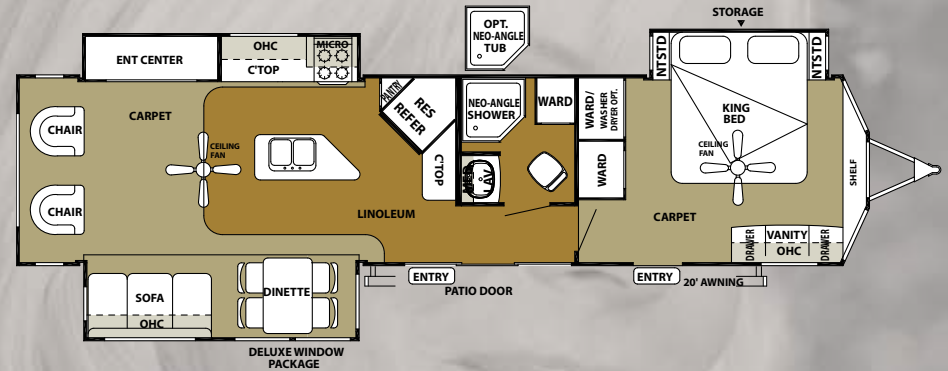


# LODGE DESTINATION TRAILERS

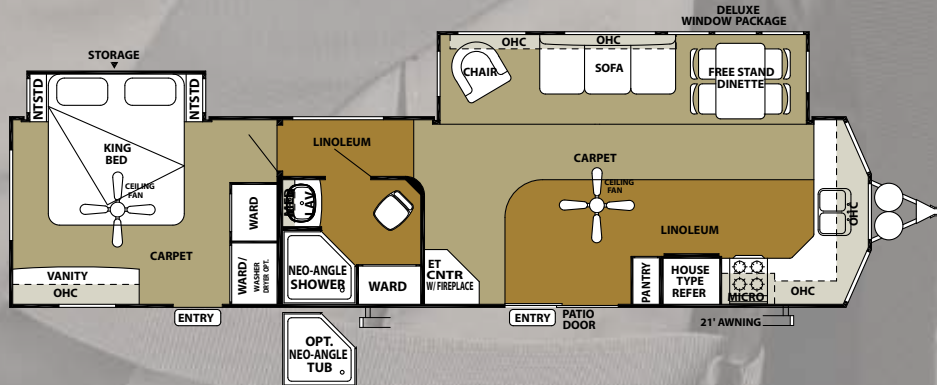
## 392FLFB



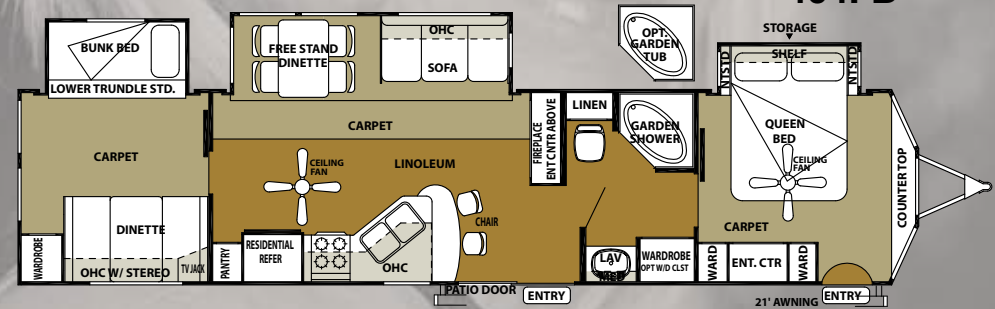
## 393RLT



## 394FKDS



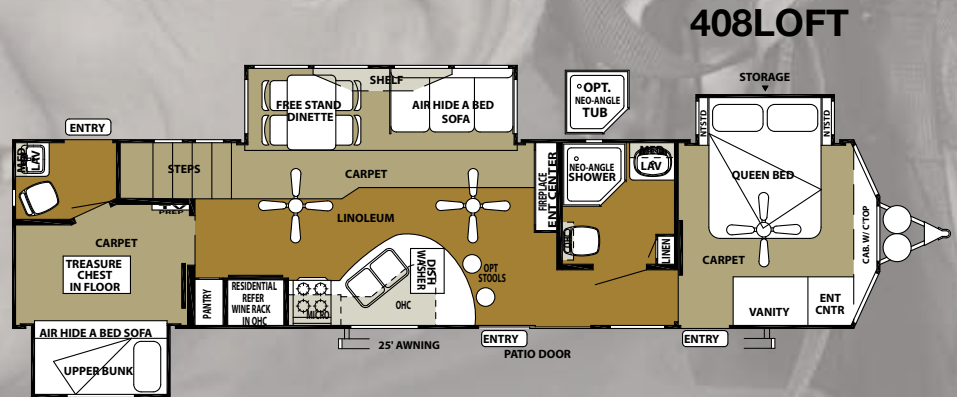
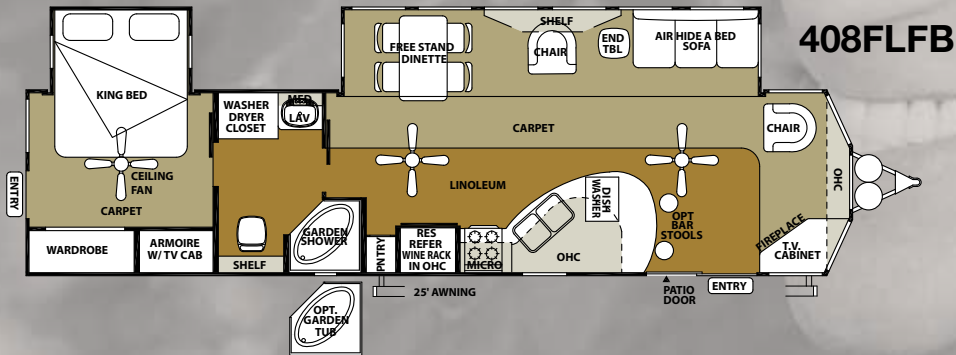
## 404FB



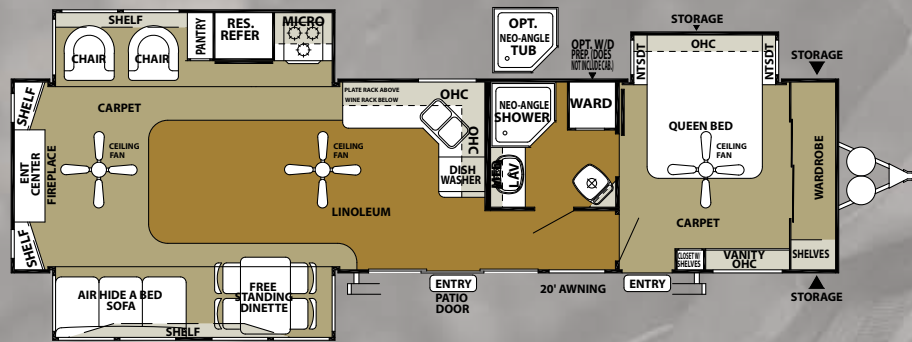
## DESTINATION TRAILERS SPECIFICATIONS

	392FLFB	393RLT	394FKDS	404FB	408FLFB	408LOFT	408REDS
HITCH WEIGHT lb	1500	1615	1555	1385	1790	1515	1295
AXLE WEIGHT	8700	9045	8520	9315	9405	10685	9990
DRY SHIP WEIGHT	10200	10660	10075	10700	11195	12200	11285
CCC cargo capacity	1400	2896	1581	2626	2536	1255	1950
EXT LENGTH	42' 0"	40' 5"	40' 10"	41' 11"	40' 5"	41' 6"	39' 9"
EXT HEIGHT	10' 9"	10' 9"	11' 9"	10' 9"	10' 9"	10' 9"	10' 9"
INT HEIGHT	84"	84"	84"	84"	96"	96"	96"
FRESH WATER CAP gal	42	92	42	92	42	40	42
BLACK WATER CAP gal	27	40	43	40	27	64	43
GREY WATER CAP gal	38	40	43	40	38	86	43
TIRE SIZE in	15"	16"	15"	16"	16"	16"	16"
MANUAL AWNING SIZE ft	21'	20'	21'	21'	25'	25'	20'





**408REDS**



CABINET



CHERRY WOOD PLANK LINOLEUM - STANDARD



WALL BOARD



CERAMIC TILE LINOLEUM - OPTIONAL



CAPPUCCINO INTERIOR



LEATHER INTERIOR



FOREST INTERIOR



MAHOGANY INTERIOR



# Wildwood DLX

# LODGE

# GRAND LODGE

by Wildwood



Forest River, Inc. encourages our customers to purchase their Forest River products from a local dealership whenever possible for the following reasons:

It is the goal of Forest River, Inc. that all of our RV owners fully enjoy the RV experience and that customer satisfaction meets or exceeds their expectations!

- 1) Forest River, Inc. dealers are independently owned and operated businesses so priority service and scheduling is at their discretion and is often provided to customers that purchased their unit at that dealership.
- 2) Purchasing locally allows customers to establish meaningful relationships with a dealer, enhancing the RV experience through assistance with product questions, user tips or RV regulations for your state or country, and much more!
- 3) Canadian customers must meet requirements to bring an RV purchased out of the country to their home. These requirements may involve additional inspections and certifications, taxes and fees. Your local Canadian Dealer is a professional at meeting these requirements.
- 4) Scheduling timely warranty repairs and adjustments through a local dealership provides far greater flexibility and convenience to you, the customer!



### PRE-DELIVERY INSPECTION FACILITY

20,000 square feet of quality assurance. The bare essentials for a premium product. This state-of-the-art facility gives immediate daily feedback to production for quality assurance in every unit built.



### Peace of mind.

Forest River has yet another exclusive feature to offer: One year of free roadside assistance will be given to every New Wildwood customer. This is just one more way to say "Thank you" and to ensure an enjoyable traveling experience.

## THE WILDWOOD FAMILY



**EXCELLENT CRAFTSMANSHIP**  
Only the finest attention to detail goes into each Wildwood. Our skilled craftsman have many years of experience building beautifully finished cabinetry. The solid nature of our well designed woodwork is another reason why Wildwood is the best built RV on the road.



Wildwood  
*Heritage Glen*  
Lite Series

Wildwood  
*X Lite*

Wildwood  
*SRV*



### Learn More

Scan this barcode using a QR Reader on your smart phone to learn more about Forest River.



A Berkshire Hathaway company.

Forest River, Inc.  
914 C.R. 1  
Elkhart, IN 46514  
(574) 533-5934  
[www.forestriverinc.com/Wildwood](http://www.forestriverinc.com/Wildwood)  
[www.forestriveraccessories.com](http://www.forestriveraccessories.com)

Your Lodge Dealer:



SAVING OUR ENVIRONMENT

All specifications contained herein are based on the latest product information at time of printing. Forest River reserves the right to make changes in colors, materials, equipment and specifications at any time without notice and assumes no responsibility for any errors in this brochure. The pictures in this brochure may show props and optional equipment. PIP041808

©2012 Wildwood - a division of Forest River Inc.  
A Berkshire Hathaway company