

Salem BY FOREST RIVER



WELCOME TO THE NEW SALEM...



Where Dreams Become Memories

LASTING VALUE. THE AFFORDABLE SALEM LE LINE IS PERFECT FOR RV'ERS SEEKING QUALITY AND COMFORT AT A DOWN-TO-EARTH PRICE.



30BHBS LIVING AREA [BLUE DECOR]



30BHBS KITCHEN



30BHBS BUNK ROOM



WELCOME TO THE *Salem* LE.

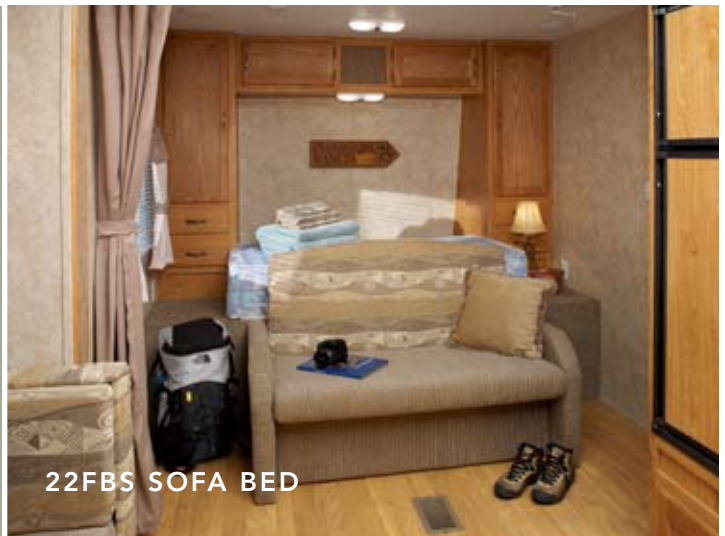
WITH OVER 30 AVAILABLE FLOORPLANS,
THERE'S SOMETHING HERE FOR EVERY CAMPER.

The moment you step into a Salem LE you'll notice a difference.

Quality building materials and appliances, innovative design features and floor plans are just the beginning. Whether you're looking for a 1/2 ton towable RV, or something to put on a seasonal site, We've got you covered.



Designer Mastercraft® interiors, Armstrong™ linoleum, stain resistant carpet with padding, 80" interior height, and full length angled overhead cabinets will help you enjoy your vacation in style and comfort. You'll be amazed at all of the standard features we've included in the Salem LE line without any sacrifices in construction, quality and affordability.



22FBS SOFA BED



22FBS SOFA BED [TAN DECOR]

You won't miss your kitchen.

A double door Dometic® RV refrigerator, 16" oven with 3-burner high output range, and a carousel microwave makes the Salem LE kitchen fully functional. Oversized countertops, durable linoleum, a residential 60/40 stainless steel sink, and plenty of cabinets will make you think twice about going home.



29FKSS KITCHEN [SAGE DECOR]

Salem LE TOY HAULERS

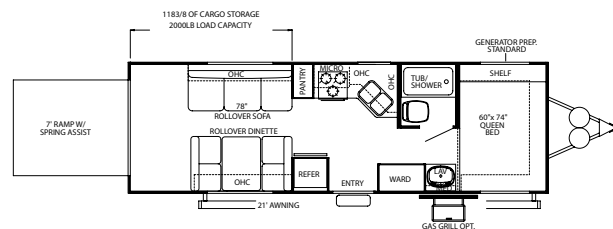


Sport Utility Trailers aren't just for quad runners anymore! These functional models are great for businesses, race fans, tailgating, and of course, motorcycles. The Salem LE Toy Haulers offer all the comforts of our regular Travel Trailers and Fifth Wheels but are available with generators, fuel stations, screen rooms, and everything else you might need for your trip.

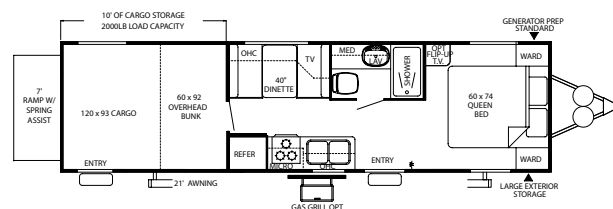


With a 2,000 lb. cargo box rating and a 10 ft. storage area, you won't have to leave much behind. All of the Salem LE SRV's are designed with utility and flexibility in mind.

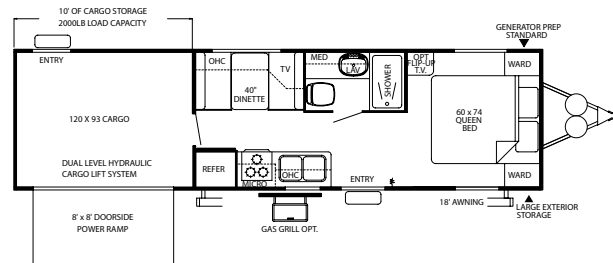
26FBSRV



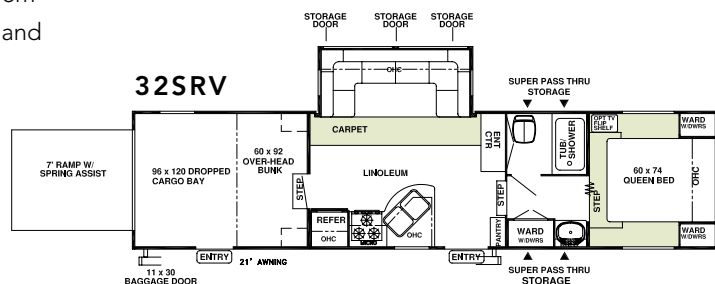
29FBSRV



30FBSRV

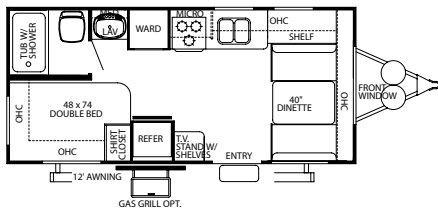


32SRV

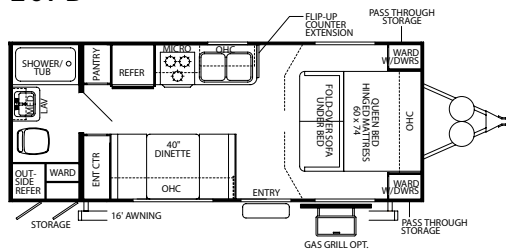


Salem LE TRAVEL TRAILER FLOORPLANS

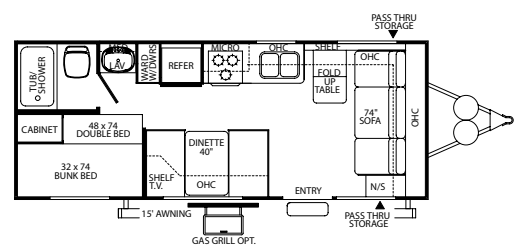
19FD



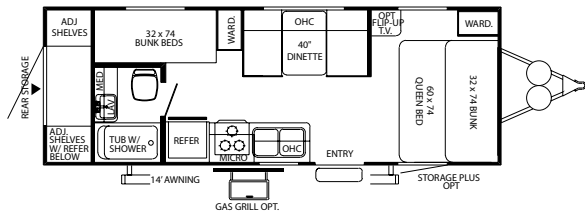
20FB



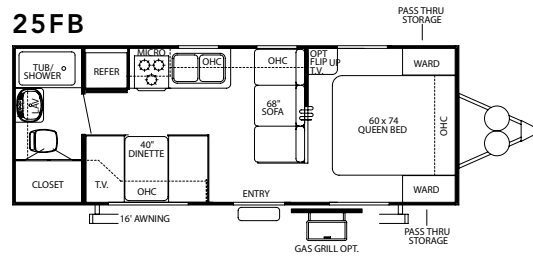
22BH



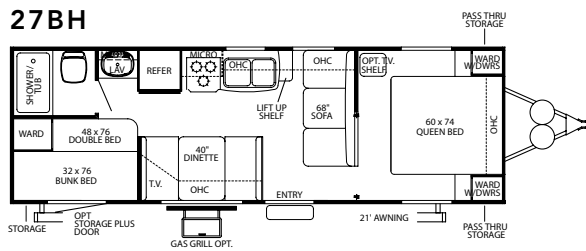
24BG



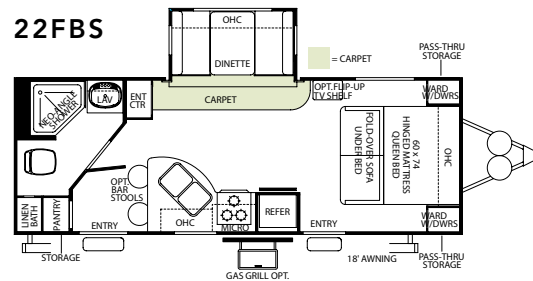
25FB



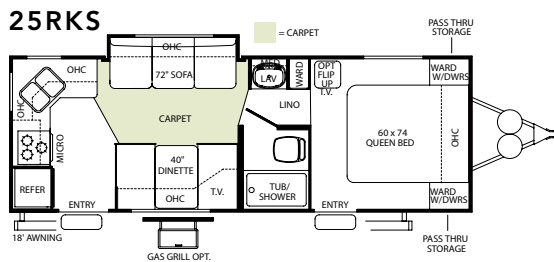
27BH



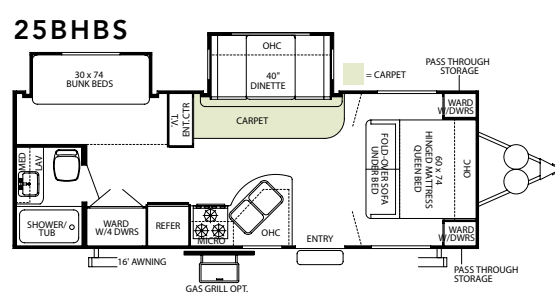
22FBS



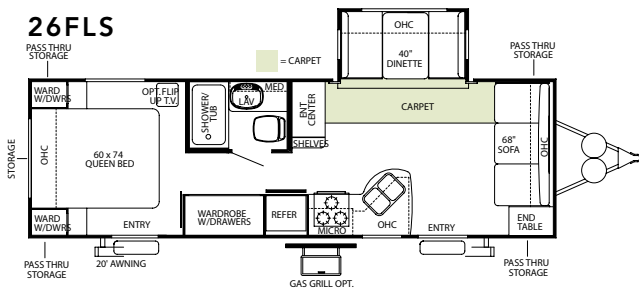
25RKS



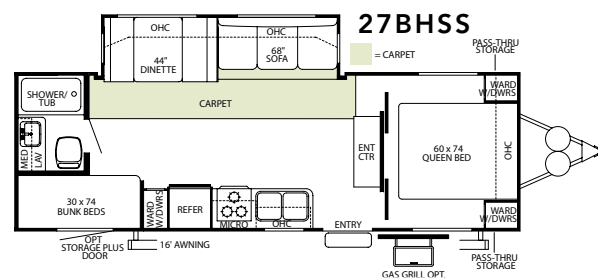
25BHBS



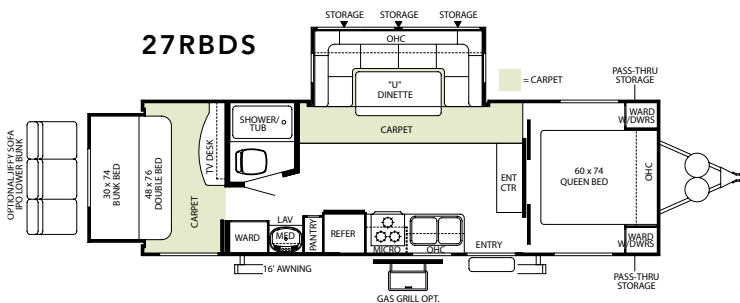
26FLS



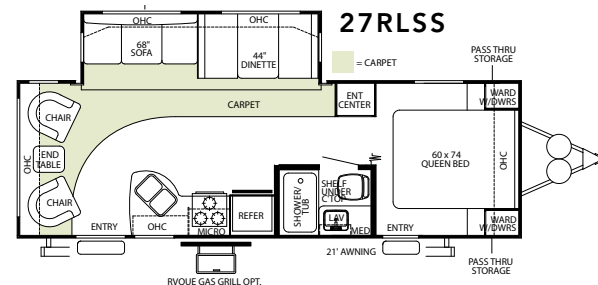
27BHSS



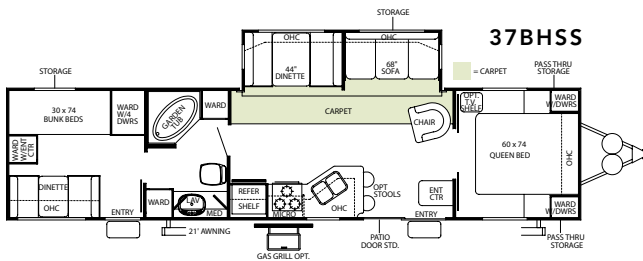
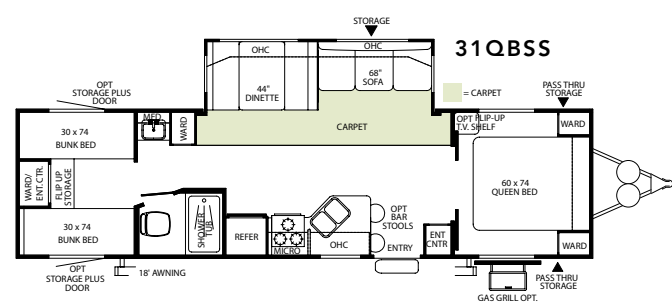
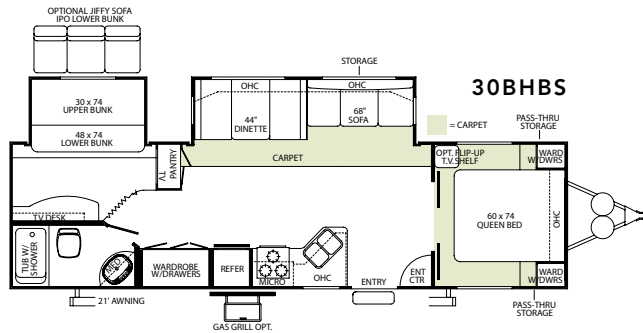
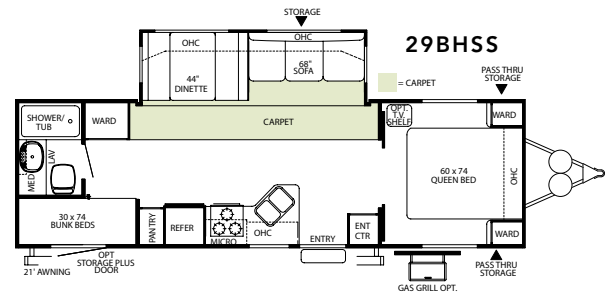
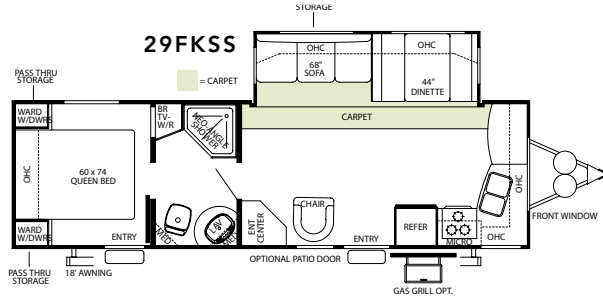
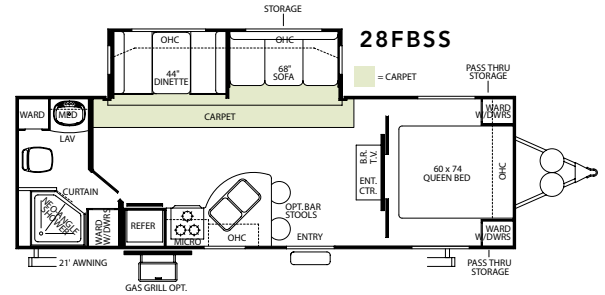
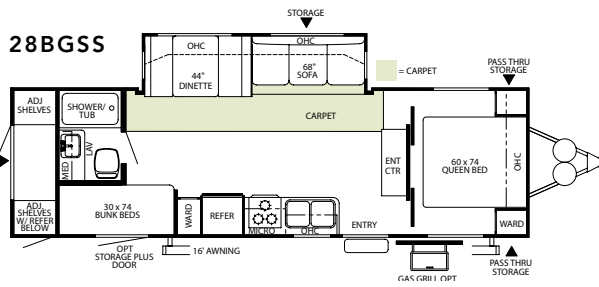
27RBDS



27RLSS



Salem LE TRAVEL TRAILER FLOORPLANS



The optional Storage Plus door adds 65 to 85 cubic feet of additional storage for oversized items.



The gas grill option is perfect for outdoor cooking. It quickly mounts on the trailer and connects to the standard equipped propane bottles.

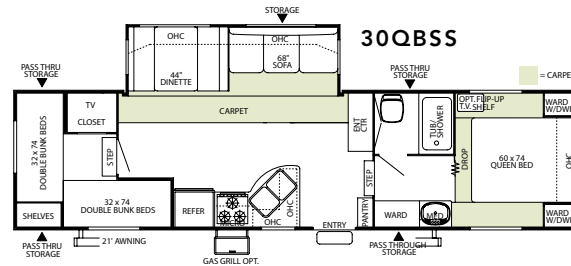
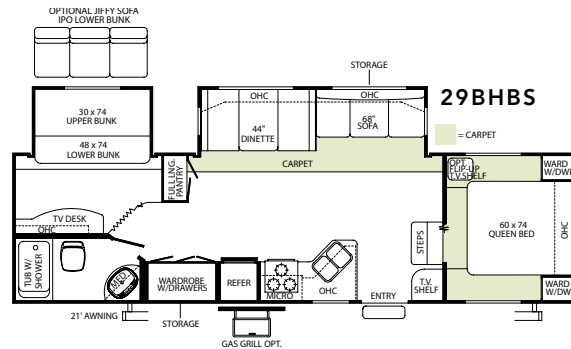
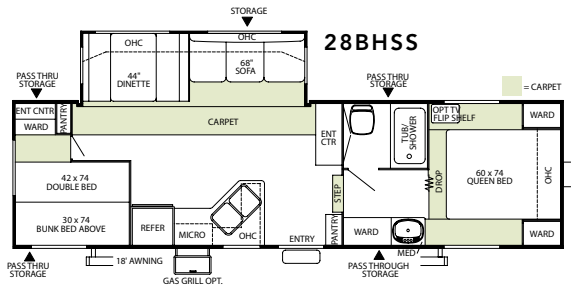
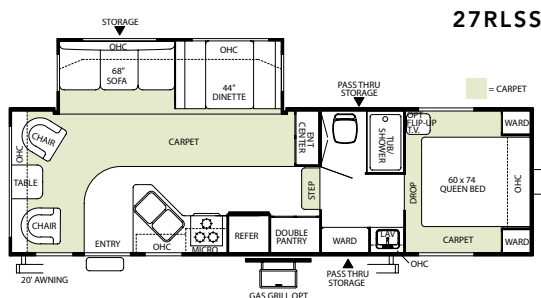
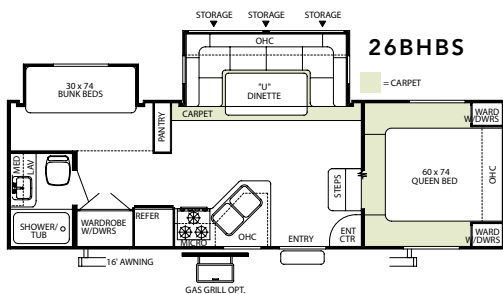
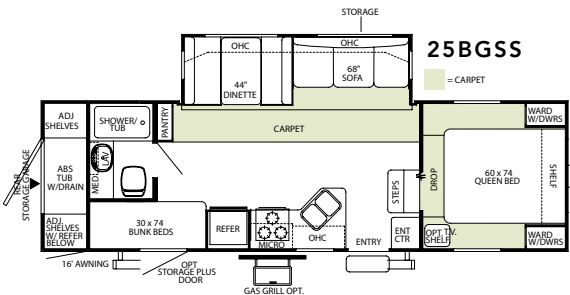
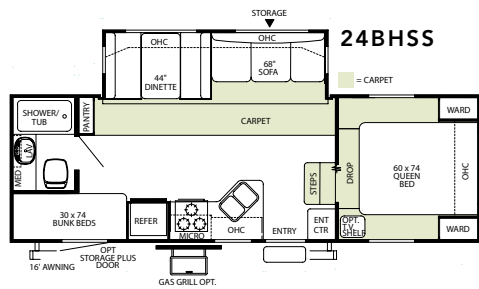
Salem LE TRAVEL TRAILER SPECIFICATIONS

	19FD	20FB	22BH	24BG	25FB	27BH	26FBSRV	29FBSRV	30FBSRV	22FBS	25RKS	26FLS	25BHBS	27BHSS
Hitch Weight (lb)	480	500	530	490	640	530	950	1310	1270	600	520	810	680	680
Axle Weight	3480	4120	3920	4460	4010	4210	5560	6170	7130	4950	4330	4970	4720	5060
Dry Ship Weight	3960	4620	4450	4950	4650	4740	6510	7480	8400	5550	4850	5780	5400	5740
GWR	7480	7500	7530	7490	7640	7530	11110	11470	13270	7600	7520	7810	7680	7680
CCC (Cargo Capacity)	3082	2442	2642	2102	2552	2352	4012	3402	4282	1612	2232	1592	1842	1502
Ext Length	20'7"	24'8"	24'8"	27'3"	26'5"	28'10"	28'6"	33'6"	33'6"	26'4"	26'4"	29'7"	27'2"	28'4"
Ext Height	10'6"	10'6"	10'6"	10'6"	10'6"	10'6"	11'6"	12'2"	12'2"	10'7"	10'7"	10'7"	10'7"	10'7"
Int Height	80"	80"	80"	80"	80"	80"	80"	80"	80"	80"	80"	80"	80"	80"
Fresh Water Cap (gal)	42	42	42	42	42	42	60	60	60	42	42	42	42	42
Black Water Cap (gal)	30	30	30	30	30	30	30	30	30	30	30	30	30	30
Grey Water Cap (gal)	30	30	30	30	30	30	30	30	30	30	30	30	30	30
Tire Size (in)	14"	14"	14"	14"	14"	14"	15"	15"	15"	15"	15"	15"	15"	15"
Awning Size (ft)	12'	16'	12'	14'	15'	21'	21'	21'	18'	18'	18'	20'	16'	16'

All lengths include hitch and bumper.



Salem LE FIFTH WHEEL FLOORPLANS



The new Salem LE garage units feature an ABS tub with drain, spray hose and nozzle, four adjustable and removable storage shelves, and over 100 cubic feet of additional storage. Standard hanging racks for a hose and ladder will make this the most functional garage unit available.

A standard 110v rear fridge is perfect for additional cold storage or for grabbing a cold drink or a snack without entering the trailer. Standard on all Salem LE garage models.

TRAVEL TRAILERS

	27RBDS	27RLSS	28BGSS	28FBSS	29BHSS	29FKSS	30BHBS	31QBSS	37BHSS	24BHSS	25BGSS	26BHBS	27RLSS	28BHSS	29BHBS	30QBSS	32SRV
Hitch Weight (lb)	750	680	870	900	590	910	780	520	970	1050	1040	1340	1410	1430	1090	1500	2040
Axle Weight	5720	5230	5640	5110	5650	5330	6370	6430	6630	5000	5960	5140	5540	6160	6390	6560	7570
Dry Ship Weight	6470	5910	6510	6010	6240	6240	7150	6950	7600	6050	7000	6480	6950	7590	7480	8060	9610
GVWR	10910	7680	11030	7900	10750	7910	10940	10680	11130	8050	11200	8340	11570	11590	11250	11660	14040
CCC (Cargo Capacity)	4002	1332	4082	1452	4131	1232	3411	3292	3092	1562	3762	1422	4182	3562	3332	3162	3626
Ext Length	30'2"	31'1"	31'3"	30'3"	31'1"	32'	34'2"	34'7"	39'	26'2"	29'1"	28'	31'3"	31'3"	31'7"	33'6"	34'6"
Ext Height	10'7"	10'7"	10'7"	10'7"	10'7"	10'7"	10'7"	10'7"	10'11"	11'5"	11'5"	11'5"	12'2"	12'2"	12'2"	12'2"	12'2"
Int Height	80"	80"	80"	80"	80"	80"	80"	80"	80"	84"	84"	84"	84"	84"	84"	84"	84"
Fresh Water Cap (gal)	42	42	42	42	42	42	42	42	42	42	42	42	42	42	42	42	86
Black Water Cap (gal)	30	30	30	30	30	30	30	30	30	30	30	30	30	30	30	30	30
Grey Water Cap (gal)	30	30	30	30	30	65	30	30	30	30	30	30	60	60	30	60	60
Tire Size (in)	15"	15"	15"	15"	15"	15"	15"	15"	15"	15"	15"	15"	15"	15"	15"	15"	16"
Awning Size (ft)	16'	21'	16'	21'	21'	18'	21'	18'	21'	16'	16'	16'	20'	18'	21'	21'	21'

All lengths include hitch and bumper.

FIFTH WHEELS

CONSTRUCTION AND EXTERIOR

- All New Graphics Package
- Three -Tone Aluminum Exterior
- .024" High Gloss Metal Exterior
- Diamond Plate Rockguard (Travel Trailers)
- Plywood Backed Exterior Mounts
- Rolled Side Metal (Slide-out models)
- Radius Baggage Doors with Thumb Pulls and Holdbacks
- Entry Assist Handle
- Hose Carrier Bumper with End Caps
- Full Pass Through Storage (per floorplan)
- A & E Awning
- Radius Clamp Ring Jalousie Windows
- E-Z Open Entry Step
- Fiberglass Entrance and Baggage Doors
- Steel Framed 30" Smooth Fiberglass Main Entry Door
- Sofa Exterior Storage Door
- Adjustable LPG Tank Tray
- 20-lb LP Bottles with Cover
- Lockable Exterior Range Vent Cover
- Fender Skirts
- Tandem Axles
- Powder Coated I-beam frame (6", 8", or 10" per floorplan)
- Cambered Chassis
- 5/8" 5-Ply Tongue and Groove Plywood Floor Decking
- 2" x 3" Floor Joists 12" on Center
- Enclosed Fresh Water Tank in a Heated Compartment
- 6-Gal. LP Water Heater
- Water Heater By-pass
- Color Coded Water Lines and Dump Valves
- Seamless Roto-cast Holding Tanks
- 2" Wall Construction 16" (or less) on Center
- R-7 Fiberglass Insulation Throughout
- 13 ply Cross Micro-Laminated Beam Header above Slide-outs
- Double Wipe Slide-out Seal (Slide-out models)
- Electric Slide-Out Systems (Flush Floor)
- Seamless Roof with 12-Year Warranty
- Drip Rails with Downspouts
- 5" Bowed Truss Roof Rafters
- Arched-Mortise & Tenon Wood Cabinet Doors

KITCHEN

- 80" Interior Height Travel Trailers (84" Fifth Wheel and SRV models)
- Dometic® Double Door Refrigerator
- Stainless Steel Sink
- Microwave with Carousel
- Magic Chef® oven
- Suburban 3-Burner, High Output Range
- Range Hood with 12-Volt Exhaust Fan and Light
- Armstrong® ToughGuard™ Flooring
- Rounded Counter Tops with Matching Edge
- Solid Wood Drawers

- Pantry Storage (per floorplan)
- Knife Rack
- Flip-Down Silverware Storage under Sink (where applicable)
- Large Overhead Cabinets
- Wall-Mounted Systems Monitor Panel

LIVING ROOM

- 80" Interior Height Travel Trailers (84" Fifth Wheel models)
- 69" Interior Slide Height (Slide-out models)
- Four Master Craft® Color Coordinated Interiors
- 13,500 BTU Roof Air Conditioner
- Swivel Rocker(s) (per floorplan)
- Flip Down Storage under Sofa (n/a sofa hide-a-bed)
- Stain Resistant Carpet w/ Padding
- Padded Entry Door Header
- Cloth Drapes with Mini Blinds
- Solid Wood Drawers
- Extra Large 44" Pedestal Booth Dinette (most Slide-out models)
- Large Dinette Picture Window
- TV Antenna and Booster
- Oversized Entertainment Center (per floorplan)
- AM/FM Stereo w/ CD and Speakers
- Wood Trim Slide-out Fascia with Fabric Insert (Slide-out models)
- Full Length Extra Large Overhead Cabinets (Slide-out models)
- Patio Door with Vertical Blinds (37BHSS)
- Swing-Arm Wall Sconce with Pleated Shade
- Flush Floor Electric Slide System with Manual Override (Slide-out models)
- 25K BTU Suburban Forced Air DSI Furnace with Thermostat
- In-Floor Rigid Heat Ducting

BEDROOM

- 80" Interior Height Travel Trailers
- Bedroom Carpet (Fifth Wheel models)
- Strut Lifted Storage Area under Bed
- Innerspring Mattress or Foam Flip-over (per floorplan)
- Bedside Wardrobes with Drawers
- 2 Stereo Speakers in Bedroom
- Bedside A/C Power Outlets (2)
- Ventilation Windows

BATHROOM

- 12-Volt Power Bath Roof Exhaust Vent
- Wooden Medicine Cabinet with Mirrored Door
- Thetford® Fresh-Water Flush Toilet
- Wall-Mounted Towel Bar
- Hand Towel Ring

SECURITY AND SAFETY

- LP Leak detector
- Smoke Detector
- Carbon Monoxide Detector
- Fire Extinguisher
- Hitch Light (Travel Trailers)
- Amber Patio Light
- Welded Heavy Duty Safety Chains (Travel Trailers)
- Electric Brakes (all wheels)
- GFI Receptacles
- Lockable Fiberglass Radius Baggage Doors
- Flush Door Latch with Integral Dead Bolt Lock

SALEM LE OPTIONS

- Black Frame Safety Glass Tinted Windows
- 6-Gallon Gas/Electric DSI Water Heater
- Exterior LP Gas Grill
- 13,500 or 15,000 BTU Ducted Air w/ Quick Cool
- Outside Shower
- Stabilizer Jacks (Travel Trailer (4) or Fifth Wheel (2))
- Electric Front Jacks (Fifth Wheel models)
- Decorative Wallpaper Border
- Double Hide-A-Bed Sofa
- Insulated Storage Plus Door with Jalousie Window (per floorplan)
- Fitted Designer Bedsread with Reverse Sham
- Bedroom Flip Table
- Multiple Bed Configurations (31QBSS and 37BHSS)
- Cable TV
- Skylight over Tub
- Tub Surround
- 30-lb LP Bottles with Cover and Auto Change (Travel Trailers)
- Two Marine Grade Exterior Speakers
- Living Room Carpet in front of Slide Only
- Jiffy Sofa IPO Lower Bunk (27RBDS, 29BHBS, and 30BHBS)
- Sliding Glass Patio Door (29FKSS)

SRV OPTIONS

- Carefree Add-A-Wall
- Hidden Screen
- Fuel Station
- Wash Down Kit
- Quad Bunk Option (29FBSRV and 30FBSRV)
- Ramp Screen Room
- Onan® 3.6 LP or 4.0 Gas Generator

Contact your Salem dealer for a complete list of options



INTRODUCING THE NEW *Salem* LA!



272BHSS [TAN DECOR]

The New Salem LA: Sleek and Strong

The all new Salem LA (laminated) line is designed for cost conscious RV'ers who are seeking the contemporary look of fiberglass with an aluminum framed superstructure and vacuum-bonded laminate side walls. In addition to structural differences from the Salem LE line, we've added some standard features to take your RV experience to the next level. All Salem LA's come standard with radius entry doors, tinted windows, 3/8" walk on roof decking, etched glass in the slide-out cabinets, and an upgraded exterior graphics package.



Salem LA TRAVEL TRAILER & FIFTH WHEELS



Features and amenities abound.

Glass shower doors are standard on all Salem LA models featuring a neo-angled shower. You can also customize your RV by adding a ceiling fan (5th wheels), free-standing dinette, roof ladder, or our new fiberglass front cap.



Salem LA SPECIFICATIONS

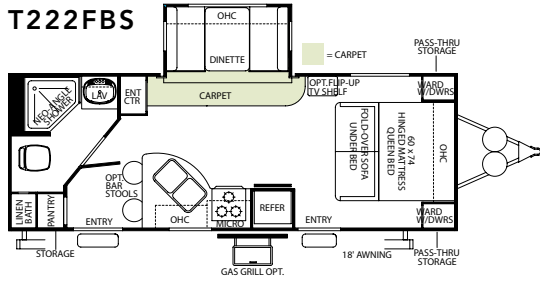
	222FBS	272BHSS	282RLSS	312BHBS	322QBSS	256BGSS	286RLSS	296BHBS	306QBSS	336BHBS
Hitch Weight (lb)	TBD	750	TBD	825	TBD	TBD	1820	1440	TBD	TBD
Axle Weight	TBD	5290	TBD	6580	TBD	TBD	6070	6480	TBD	TBD
Dry Ship Weight	TBD	6040	TBD	7405	TBD	TBD	7890	7920	TBD	TBD
GVWR	TBD	7750	TBD	10985	TBD	TBD	11980	11600	TBD	TBD
CCC (Cargo Capacity)	TBD	1251	TBD	3121	TBD	TBD	3631	3221	TBD	TBD
Ext Length	TBD	28'9"	TBD	34'2"	TBD	TBD	31'2"	31'2"	TBD	TBD
Ext Height	10'7"	10'7"	10'7"	10'7"	10'7"	12'2"	12'2"	12'2"	12'2"	12'2"
Int Height	80"	80"	80"	80"	80"	84"	84"	84"	84"	84"
Fresh Water Cap (gal)	42	42	42	42	42	42	42	42	42	42
Black Water Cap (gal)	30	30	30	30	30	30	30	30	30	30
Grey Water Cap (gal)	30	30	30	30	30	30	30	30	30	30
Tire Size (in)	15"	15"	15"	15"	15"	15"	15"	15"	15"	15"
Awning Size (ft)	18'	16'	21'	21'	21'	16'	20'	21'	21'	21'

All lengths include hitch and bumper.

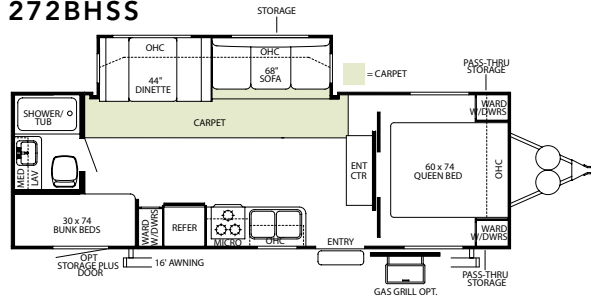


Salem LA TRAVEL TRAILER & FIFTH WHEEL FLOORPLANS

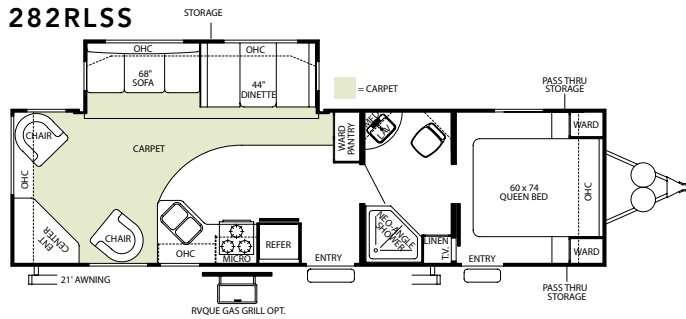
T222FBS



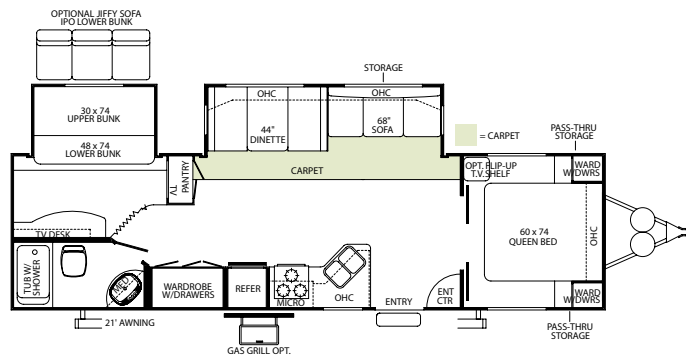
272BHSS



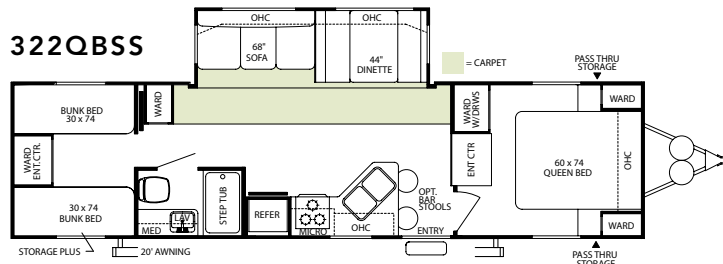
282RLSS



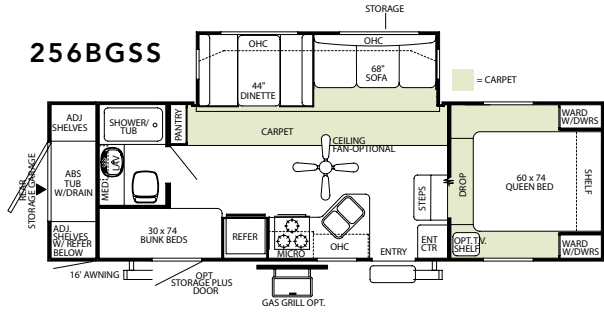
312BHSS



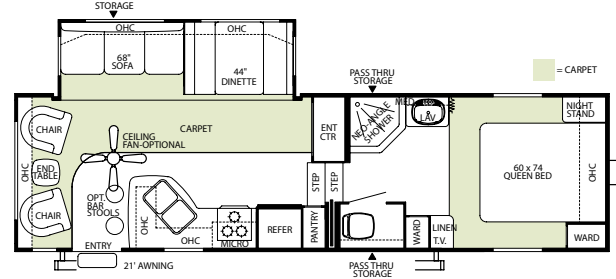
322QBSS



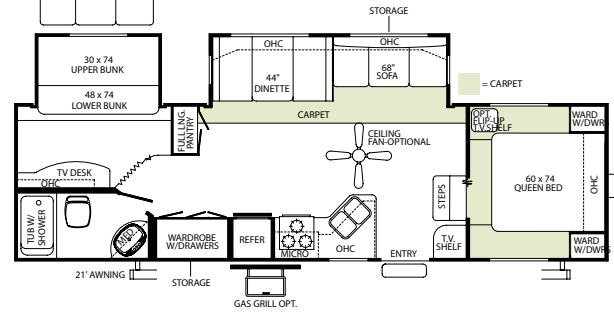
256BGSS



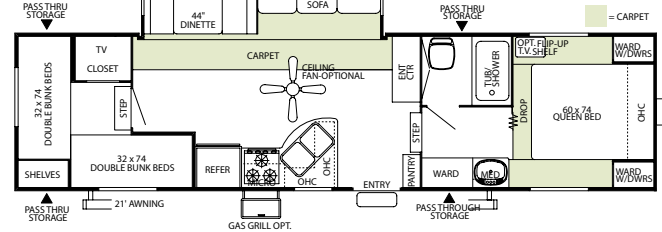
286RLSS



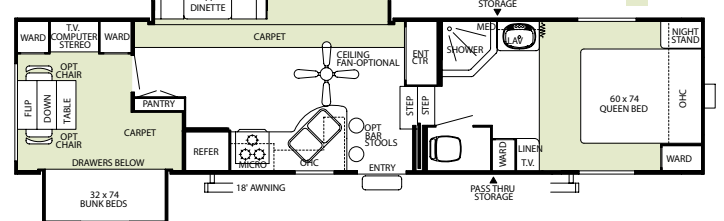
296BHBS



306QBSS



336BHBS



CONSTRUCTION AND EXTERIOR

- Upgraded Graphics Package
- Aluminum-framed Vacuum-bonded Laminated Sidewalls
- Tinted Black Frame Windows
- 3/8" Walk-on Roof Decking
- 30" Smooth Fiberglass Radius Entry Doors (26" Secondary)
- Diamond Plate Rockguard (Travel Trailers)
- Rolled Side Metal
- Radius Baggage Doors with Thumb Pulls and Holdbacks
- Entry Assist Handle
- Hose Carrier Bumper with End Caps
- Full Pass Through Storage (per floorplan)
- A & E Awning
- Radius Clamp Ring Jalousie Windows
- E-Z Open Entry Step
- Sofa Exterior Storage Door
- Adjustable LPG Tank Tray
- 20-lb LP Bottles with Cover
- Lockable Exterior Range Vent Cover
- Upgraded ABS Fender Skirts
- Tandem Axles w/15" Tires
- 8" Powder Coated I-beam Frame (10" 312BHBS)
- Cambered Chassis
- 5/8" 5-Ply Tongue and Groove Plywood Floor Decking
- 2" x 3" Floor Joists 12" on Center
- Enclosed Fresh Water Tank in a Heated Compartment
- 6-Gal. LP Water Heater
- Water Heater By-pass
- Color Coded Water Lines and Dump Valves
- Seamless Roto-cast Holding Tanks
- R-7 Fiberglass Insulation (Floors and Ceiling)
- R-9 Insulation (Sidewalls)
- Double Wipe Slide-out Seal
- Power Slide-Out Systems (Flush Floor)
- Seamless Roof with 12-Year Warranty
- Drip Rails with Downspouts
- 5" Bowed Truss Roof Rafters
- Arched-Mortise & Tenon Wood Cabinet Doors

KITCHEN

- 80" Interior Height Travel Trailers (84" Fifth Wheel Models)
- Dometic® Double Door Refrigerator
- Stainless Steel 60/40 Sink
- Microwave with Carousel
- Magic Chef® oven
- Suburban 3-Burner, High Output Range
- Range Hood with 12-Volt Exhaust Fan and Light
- Armstrong® ToughGuard™ Flooring
- Rounded Counter Tops with Matching Edge
- Solid Wood Drawers
- Solid Wood Raised Panel Upper Cabinet Doors
- Pantry Storage (per floorplan)

- Knife Rack
- Flip-Down Silverware Storage under Sink (where applicable)
- Large Overhead Cabinets
- Wall-Mounted Systems Monitor Pane

LIVING ROOM

- 80" Interior Height Travel Trailers (84" Fifth Wheel Models)
- 69" Interior Slide Height
- Four Master Craft® Color Coordinated Interiors
- 13,500 BTU Roof Air Conditioner
- Swivel Rocker(s) (per floorplan)
- Flip Down Storage under Sofa (n/a sofa hide-a-bed)
- Stain Resistant Carpet w/ Padding
- Padded Entry Door Header
- Cloth Drapes with Mini Blinds
- Solid Wood Drawers
- Extra Large 44" Pedestal Booth Dinette
- Large Dinette Picture Window
- TV Antenna and Booster
- AM/FM Stereo w/ CD and Speakers
- Wood Trim Slide-out Fascia with Fabric Insert
- Extra Large Overhead Cabinets w/ Etched Glass
- Swing-Arm Wall Sconce with Pleated Shade
- Flush Floor Electric Slide System with Manual Override
- 25K BTU Suburban Forced Air DSI Furnace with Thermostat
- In-Floor Rigid Heat Ducting

BEDROOM

- 80" Interior Height Travel Trailers
- Bedroom Carpet (Fifth Wheel Models)
- Strut Lifted Storage Area under Bed
- Innerspring Mattress or Foam Flip-over (per floorplan)
- Oversized Bunks (most models)
- Bedside Wardrobes with Drawers
- 2 Stereo Speakers in Bedroom
- Ventilation Windows

BATHROOM

- Glass Shower Door (Neo-angle Showers)
- 12-Volt Power Bath Roof Exhaust Vent
- Wooden Medicine Cabinet with Mirrored Door
- Thetford® Fresh-Water Flush Toilet
- Wall-Mounted Towel Bar
- Hand Towel Ring

SECURITY AND SAFETY

- LP Leak detector
- Smoke Detector
- Carbon Monoxide Detector
- Fire Extinguisher
- Hitch Light (Travel Trailers)
- Amber Patio Light
- Welded Heavy Duty Safety Chains (Travel Trailers)
- Electric Brakes (all wheels)
- GFI Receptacles
- Lockable Fiberglass Radius Baggage Doors
- Flush Door Latch with Integral Dead Bolt Lock

SALEM LA OPTIONS

- Fiberglass Front Cap
- Free Standing Dinette w/4 Chairs
- Living Room Ceiling Paddle Fan (5th Wheel Models)
- Slide Room Awning
- Roof Ladder
- 6-Gallon Gas/Electric DSI Water Heater
- Black Frame Safety Glass Tinted Windows
- Extra Large 8 cu ft Double Door Refrigerator
- Exterior LP Gas Grill
- 13,500 or 15,000 BTU Ducted Air w/ Quick Cool
- Outside Shower
- Stabilizer Jacks (Travel Trailer or Fifth Wheel)
- Electric Front Jacks (Fifth Wheel models)
- Decorative Wallpaper Border
- Double Hide-A-Bed Sofa
- Insulated Storage Plus Door with Jalousie Window (272BHSS)
- Fitted Bedspread with Reverse Sham
- Bedroom Flip Table
- Jiffy Sofa IPO Lower Bunk (296BHBS and 312BHBS)
- Cable TV
- Skylight over Tub
- Tub Surround
- 30-lb LP Bottles with Cover and Auto Change (Travel Trailers)
- Two Marine Grade Exterior Speakers
- Slide Room Awning(s)
- Phone Jack
- Living Room Carpet in front of Slide Only

Contact your Salem dealer for a complete list of options





362FKDS DINING AND LIVING ROOM [TAN DECOR]

**Salem XL:
Bigger and Better**

The Salem XL line is a perfect match for RV'ers seeking a towable or smaller seasonal RV. With our new 102" exterior width, bathrooms, bedrooms and walkways have all been enlarged. We've even added 84" interior heights for additional roominess. One look at the Salem XL and you'll appreciate the changes.

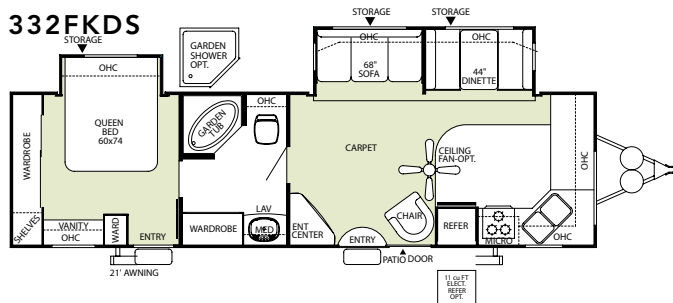


362FKDS BEDROOM [TAN DECOR]

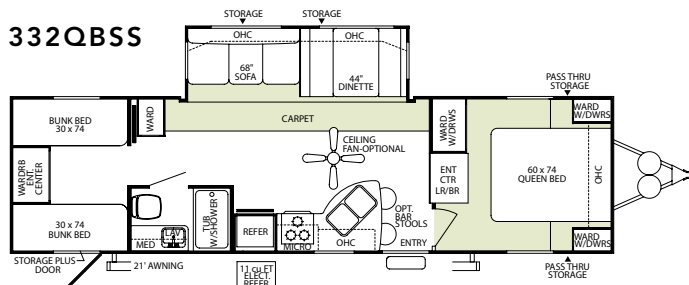


Salem XL TRAVEL TRAILER AND FIFTH WHEEL FLOORPLANS

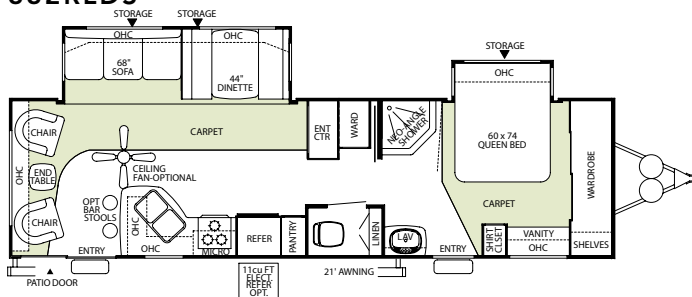
332FKDS



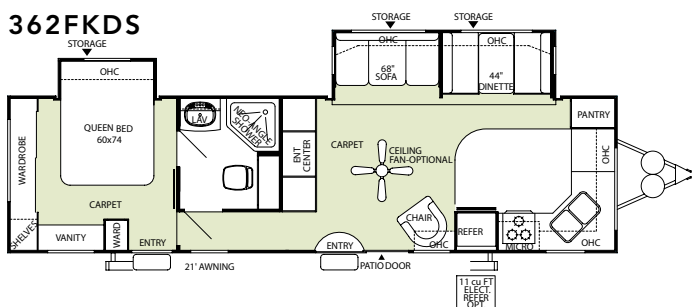
332QBSS



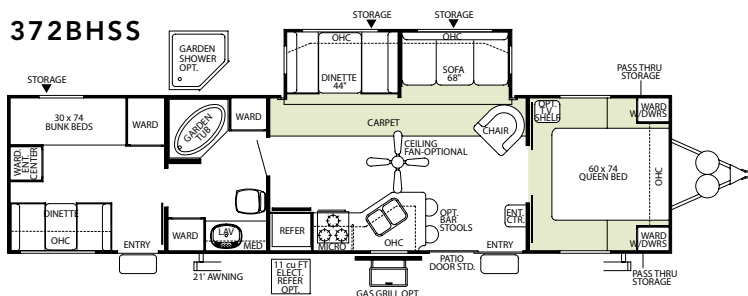
332RLDS



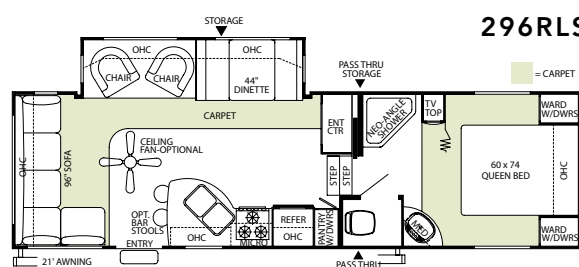
362FKDS



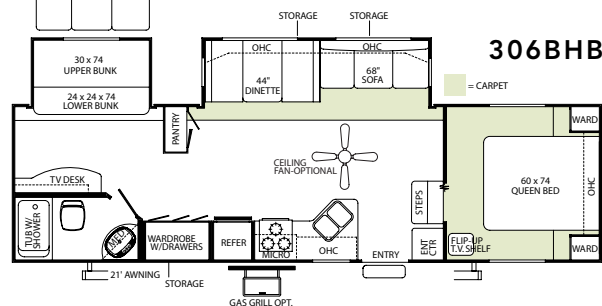
372BHSS



296RLSS



306BHBS



296RLSS [MAUVE DECOR]

Salem XL SPECIFICATIONS

	332FKDS	332QBSS	332RLDS	362FKDS	372BHSS	296RLSS	306BHBS
Hitch Weight (lb)	1200	1000	1000	1000	1175	TBD	TBD
Axle Weight	7290	7250	7620	7720	6950	TBD	TBD
Dry Ship Weight	8490	8250	8620	8720	8125	TBD	TBD
GVWR	11360	11160	11160	11160	11335	TBD	TBD
CCC (Cargo Capacity)	2410	2450	2080	1980	2750	TBD	TBD
Ext Length	35'1"	35'9"	35'	36'4"	39'	TBD	TBD
Ext Height	11'9"	11'9"	11'9"	11'9"	11'9"	12'2"	12'2"
Int Height	84"	84"	84"	84"	84"	84"	TBD
Fresh Water Cap (gal)	42	42	42	42	42	42	TBD
Black Water Cap (gal)	30	30	30	30	30	30	TBD
Grey Water Cap (gal)	30	30	30	30	30	30	TBD
Tire Size (in)	15"	15"	15"	15"	15"	15"	15"
Awning Size (ft)	21'	21'	21'	21'	21'	21'	21'

All lengths include hitch and bumper.



COMFORT AND CONVENIENCE

- Four New Designer Color Coordinated Mastercraft® Interiors
- Designer Coordinated Drapes & Valances
- 102" Exterior Width for Increased Living Space
- 84" Interior Height
- Black Framed Tinted Glass Windows
- WaterPur™ Whole House Water Filtration System
- Water Heater By-Pass
- 6-gallon Gas/Electric DSI Water Heater
- Double Entry Doors (most floorplans)
- Pass Thru Storage (per floorplan)
- Dometic® 13,500 BTU Central Air Conditioner with Quick Cool Feature
- In-Floor Ducted Heat with 30K BTU Furnace
- Stain Resistant Carpet with Padding
- Armstrong® ToughGuard™ Plank Wood Flooring
- Flush-Floor Electric or Hydraulic Slide Rooms
- Systems Monitor Panel
- Jalousie Clamp Radius Windows (Bedroom, Living Room, and Kitchen)
- Solid Oak Drawer Fronts with Wood Sides
- Mortise and Tenon Cabinet Doors
- Mini Blinds Throughout (except bunk beds)
- Insulated Storage Plus Door w/ Jalousie Window and Bolt Lock (T332QBSS)
- Dual Bulb Overhead Lights (most areas)

KITCHEN

- 84" Interior Height
- Color Coordinated Countertop
- Rounded Euro Style Counter Tops with Matching Edge
- Raised Panel Cabinet Upper Doors
- 12V Power Range Hood with Light
- Magic Chef® Three-Burner High Output Range with 16" Oven
- Dometic® Double Door RV Refrigerator (6 cubic ft)
- Magic Chef® Microwave with Carousel
- Acrylic 60/40 Residential Style Kitchen Sink
- Residential Style Faucet
- Sink Cover
- Waste Basket
- Light above Sink
- Built in Knife Holder
- Flip Down Silverware Storage (per floorplan)
- Positive Cabinet Door Latches
- Pantry

LIVING ROOM

- 84" Interior Height
- Swivel Rocker Chair(s) (per floorplan)
- Wainesc Coating and Chair Rail (per floorplan)
- AM/FM/CD/Cassette Stereo System w/ remote control
- 6+2 Forest River Sound System with 100 Watt Subwoofer for True Surround Sound
- Surround Sound TV Hook-up
- TV Antenna with Booster
- Cable and Satellite Ready
- Extra Large TV Cabinets (per floorplan)
- 60" Glass Sliding Patio Door w/ Vertical Blinds (Travel Trailers, n/a 332QBSS)

- Extra Large Picture Window at Dinette
- Full Length Angled Overhead Cabinets with Etched Glass in Slide-outs
- 1/2" Plywood Hinged Dinette Seats
- Pots and Pans Storage Drawer under Booth Dinette
- Arched Dinette Backs
- Large External Luggage Doors behind Sofa and Dinette
- Extra Large 44" Pedestal Dinette for More Comfortable Dining and Sleeping
- Oak Trim at Ceiling
- Swing-out Wall Light with Pleated Shade
- Coordinating Wallpaper Border
- Wood Trim Slide-out Fascia with Fabric Insert

BEDROOM

- 84" Interior Height
- Fitted Décor-coordinated Bedspreads and Bunkspreads
- Deluxe Innerspring Mattress
- Bedroom Roof Vent
- Designer Coordinated Headboard (Fifth Wheel models)
- 1" Plywood Bed and Bunk Platforms
- Lift-up Beds with Gas Struts (per floorplan)
- TV Shelf or Flip Table and Outlet in Bedroom
- Cable TV Hook-up
- 2 Stereo Speakers
- Stain Resistant Carpet w/ Padding
- Privacy Doors or Sliding Curtain (per floorplan)
- Side Ventilation Windows

EXTERIOR

- New Exterior Graphics Package
- .024 Gauge High Gloss Aluminum Three-Tone Exterior
- 30" Smooth Fiberglass Radius Primary Entrance Door (26" secondary)
- Smooth Fiberglass Radius Baggage Doors with Thumb Pulls and Holdbacks
- Plywood Backer on Exterior Mounts
- A & E Side Awning
- Diamond Plate Rock Guard (Travel Trailers)
- One-piece Rock Guard Awning (332FKDS and 362FKDS)
- Awning Drip Rail with Downspouts
- Upgraded ABS Color Keyed Fender Skirts with Scene
- 15" Radial Tires
- Entry Assist Handle
- 30 lb. Double LP Tanks with Automatic Change Over
- LP Tank Cover (Travel Trailers)
- City Water Fill with Valve
- Rear Bumper with Sewer Hose Storage

CONSTRUCTION

- 10" Extruded I-beam Frame
- Cambered Chasis
- Seamless Roto-cast Holding Tanks
- 50 gal Fresh Water Capacity
- Color Coded Water Lines and Dump Valve Handles
- Darco Underbelly Wrapped at Ends
- Boot Strapping

- 2" x 3" Floor Joists 12" on Center
- 5/8" 5-ply Tongue and Groove Plywood Floor Decking
- 2" Wall Studs Maximum 16" on Center
- Steel Framed 6' Entrance Doors
- 5" Bowed Truss Roof Rafters
- 3/8" Walk-on Roof Decking
- Seamless One-piece Rubber Roof w/12 Year Warranty
- Double Wipe Slide-out Seal
- R-7 Insulation
- Galvanized Steel Wheelwells with Fiberglass Insulation (except slide-outs)
- Extended Pin Box and Enclosed Gooseneck (Fifth Wheel Models)

SECURITY AND SAFETY

- Smoke Detector
- Fire Extinguisher
- Carbon Monoxide Detector
- LP Gas Leak Detector
- Flush Door Latch with Integral Dead Bolt Lock
- Main Entry Step Light with Interior Switch
- Amber Porch Light with Interior Switch
- Main Entry Doorside Scare Light
- Screen Door with Safety Latch
- GFI Receptacles and Covered Patio Outlet
- Welded Heavy Duty Safety Chains (Travel Trailers)
- Hitch Light (Travel Trailers)
- E-Z Open Entry Steps
- Lockable Fiberglass Radius Baggage Doors

POPULAR OPTIONS

- Safety Glass Black Framed Tinted Windows
- Fiberglass Exterior
- Fiberglass Front Cap (5th Wheel Models)
- 10-gallon Gas/Electric DSI Water Heater
- Skylight over Tub
- Bi-fold Shower Door (per floorplan)
- Garden Shower w/ Glass Door (per floorplan)
- Garden Tub Glass Door (per floorplan)
- Extra Large 8 cu-ft Double Door RV Refrigerator
- 11 cu-ft House Type Refrigerator (Travel Trailers)
- Double Sofa Hide-A-Bed
- Free Standing Dinette w/4 chairs and Flip Leaf
- Second Drawer under Dinette (n/a with Free Standing Dinette)
- Phone Jack
- Bar Stools (per floorplan)
- Front Power Jacks (Fifth Wheel models)
- Stabilizer Jacks
- Detachable Hitch
- Outside Shower
- Slide Room Awning(s)
- Spare Tire, Carrier and Cover
- Exterior LP Gas Grill
- Living Room Ceiling Paddle Fan w/ Wall Switch
- Living Room Carpet in front of Slide Only

Contact your Salem dealer for a complete list of options



392FLFB LIVING ROOM [TAN DECOR]

Whether you're preparing a meal or just relaxing, you'll enjoy the view out of your 60" glass patio door. The 392FLFB even comes standard with an electric fireplace and three large front bay windows. (TV not included)

Spacious kitchen floorplans along with a 18 cubic ft refrigerator with icemaker, 22" freestanding oven with 4 burner range, and a carousel microwave are all standard features on Salem Park Trailers.



392FLFB KITCHEN





392FLFB 19' SLIDE ROOM [TAN DECOR]



Spacious and Open Living Space

The 392FLFB 19' Slide Room is shown with optional sofa hide-a-bed, free-standing dinette, and new La-Z-Boy recliners.

You'll notice the extra living space in our new 102" wide design the instant you step inside. Designed from the ground up to be a seasonal RV, the Salem PT line is all about comfort. Loaded with standard features and available options like our exclusive La-Z-Boy furniture package, Your Salem PT can be equipped with all of the comforts of home for a memorable season of camping fun.



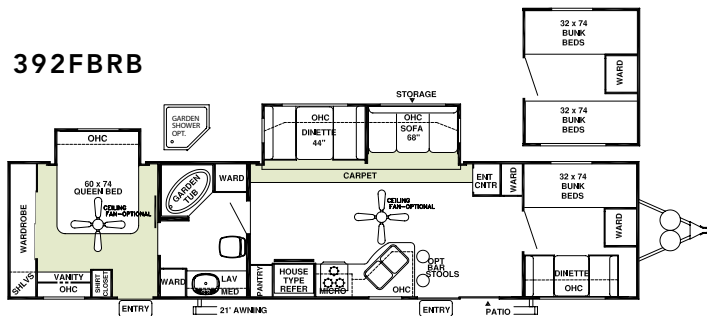
402 2B BUNK ROOM [SAGE DECOR]



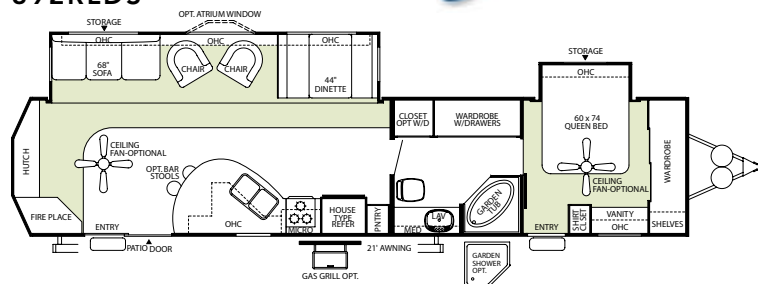
402 2B BEDROOM SLIDE [SAGE DECOR]

Salem PT PARK TRAILER MODEL FLOORPLANS

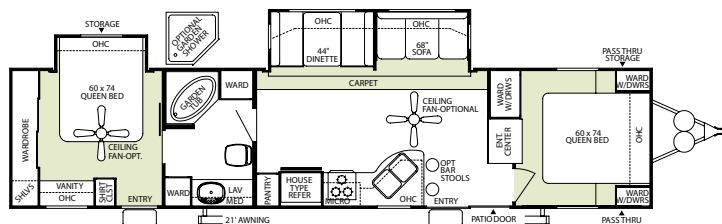
392FBRB



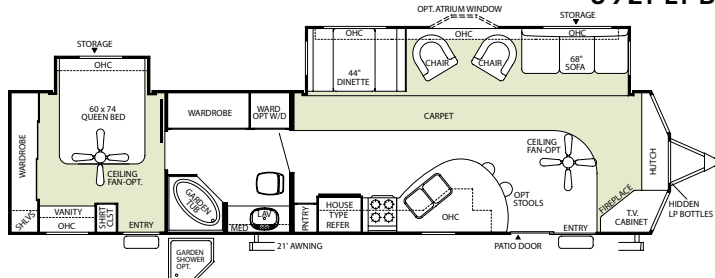
392RLDS



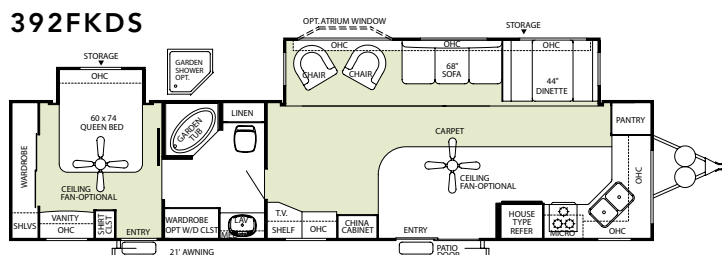
392FBRB



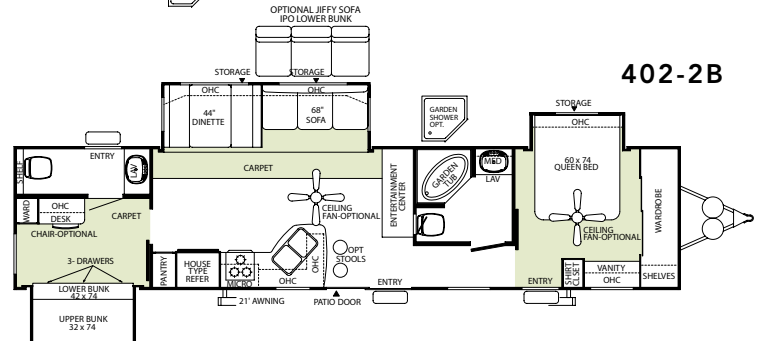
392FLFB



392FKDS



402-2B



Salem PT SPECIFICATIONS

	392FBRB	392FKDS	392FLFB	392RLDS	402-2B
Hitch Weight (lb)	1000	1550	1500	1150	1300
Axle Weight	8600	8520	8700	8980	9130
Dry Ship Weight	9600	10070	10200	10130	10430
GVWR	11400	11950	11660	11310	11700
CCC (Cargo Capacity)	1340	1420	1000	720	810
Ext Length	42'	42'	42'	42'	42'6"
Ext Height	11'9"	11'9"	11'9"	11'9"	11'9"
Int Height	84"	84"	84"	84"	84"
Fresh Water Cap (gal)	42	42	42	42	42
Black Water Cap (gal)	30	30	30	30	30
Grey Water Cap (gal)	30	60	30	30	30
Tire Size (in)	15"	15"	15"	15"	15"
Awning Size (ft)	21'	21'	21'	21'	21'

All lengths include hitch and bumper.



Our 12" 10-blade Fantastic™ Bath Fan significantly increases air circulation and the removal of condensation as compared to the industry's' standard smaller power bath vent.



The Salem 100 watt surround sound system features an AM/FM CD cassette stereo with remote control. It's even prewired for easy hook up to your TV.



The WaterPur™ whole house water filtration system filters out impurities and odor from all of the water entering your trailer which means healthier tap water for you and you family.



COMFORT AND CONVENIENCE

- Four New Designer Color Coordinated Mastercraft® Interiors
- Designer Coordinated Drapes & Valances
- 102" Exterior Width for Increased Living Space
- 84" Interior Height
- Black Framed Tinted Glass Windows
- WaterPur™ Whole House Water Filtration System
- Water Heater By-Pass
- 20-gallon Electric DSI Water Heater
- 50 gallon Fresh Water Capacity
- Holding Tanks
- Double Entry Radius Doors
- Dometic® 15,000 BTU Central Air Conditioner with Quick Cool Feature
- In-Floor Ducted Heat with 40K BTU Furnace
- Stain Resistant Carpet with Padding
- Armstrong® ToughGuard™ Plank Wood Flooring
- Flush-Floor Hydraulic Slide Rooms with Manual Override
- Systems Monitor Panel
- 12 Volt Lighting
- 50 amp Electrical Service and 65 amp 12 Volt Converter
- Jalousie Clamp Radius Windows (Bedroom, Living Room, and Kitchen)
- Solid Oak Drawer Fronts with Wood Sides
- Mortise and Tenon Cabinet Doors
- Mini Blinds Throughout (except bunk beds)
- Dual Bulb Overhead Lights (most areas)

KITCHEN

- Color Coordinated Countertop
- Rounded Euro Style Counter Tops with Matching Edge
- Raised Panel Cabinet Upper Doors
- 20" Freestanding 4 Burner Gas Range with Oven
- 18 cu. Ft. Residential Electric Refrigerator with Icemaker
- Magic Chef® Microwave with Carousel and Range Hood
- Acrylic 60/40 Residential Style Kitchen Sink
- Residential Style Faucet
- Sink Cover (1)
- Light above Sink
- Built in Knife Holder
- Flip Down Silverware Storage (per floorplan)
- Positive Cabinet Door Latches
- Waste Basket
- Pantry

LIVING ROOM

- Swivel Rocker Chair(s) (per floorplan)
- Waines Coating and Chair Rail (per floorplan)
- AM/FM/CD/Cassette Stereo System w/ remote control
- 6+2 Forest River Sound System with 100 Watt Subwoofer for True Surround Sound
- Surround Sound TV Hook-up
- TV Antenna with Booster
- Cable and Satellite Ready
- Extra Large TV Cabinets (per floorplan)
- 60" Glass Sliding Patio Door with Vertical Blinds
- Extra Large Picture Window at Dinette (slide-out models)
- Full Length Angled Overhead Cabinets with Etched Glass in Slide-outs (most models)
- 1/2" Plywood Hinged Dinette Seats

- Pots and Pans Storage Drawer under Booth Dinette
- Arched Dinette Backs
- Large External Luggage Doors behind Sofa and Dinette
- Extra Large 44" Pedestal Dinette for More Comfortable Dining and Sleeping
- Oak Trim at Ceiling
- Swing-out Antique English Wall Light with Pleated Shade
- Coordinating Wallpaper Border
- Solid Oak Slide-out Fascia

BEDROOM

- Fitted Décor-coordinated Bedspreads and Bunkspreads
- Deluxe Innerspring Mattress
- Bedroom Roof Vent
- _" Plywood Bed and Bunk Platforms
- Lift-up Beds with Gas Struts (per floorplan)
- TV Shelf
- Cable TV Hook-up
- 2 Stereo Speakers
- Stain Resistant Carpet w/ Padding
- Solid Privacy Doors
- Side Ventilation Windows
- Solid Oak Slide-out Fascia
- Full Length Mirrored Wardrobe Closet with 51 cu ft. Storage (per floorplan)

BATHROOM

- Built-in Wood Medicine Cabinet and Mirror
- Ceiling Light with Convenient Wall Switch
- China Foot Flush Toilet(s)
- Glass Shower Door (Neo-Angled Showers)
- ABS Tub and Shower with One-piece Surround
- Oversized Garden Tub (per floorplan)
- 12" 10-blade Fantastic Bath Fan™
- Bathroom Towel Bar and Hand Towel Ring
- Brass Finished Toilet Paper Holder
- Waste Basket

EXTERIOR

- New Exterior Graphics Package
- .024 Gauge High Gloss Aluminum Three-Tone Exterior
- 30" Smooth Fiberglass Radius Primary Entrance Door (26" secondary)
- Smooth Fiberglass Radius Baggage Doors with Thumb Pulls and Holdbacks
- Plywood Backer on Exterior Mounts
- A & E Side Awning
- Diamond Plate Rock Guard (n/a 391FLFB)
- One-piece Rock Guard Awning (Front Window models)
- Awning Drip Rail with Downspouts
- Upgraded ABS Color Keyed Fender Skirts with Scene
- 15" Radial Tires
- Entry Assist Handle
- 30 lb. Double LP Tanks with Automatic Change Over
- LP Tank Cover
- Colored Dump Valve Handles
- City Water Fill with Brass Valve
- Rear Bumper with Sewer Hose Storage

CONSTRUCTION

- 12" Extruded I-beam Frame
- Cambered Chasis
- Seamless Roto-cast Holding Tanks
- Color Coded Water Lines

- Darco Underbelly Wrapped at Ends
- Boot Strapping
- 2" x 3" Floor Joists 12" on Center
- 5/8" 5-ply Tongue and Groove Plywood Floor Decking
- 2" Wall Studs Maximum 16" on Center
- Steel Framed 6' Entrance Doors
- 5" Bowed Truss Roof Rafters
- 3/8" Walk-on Roof Decking
- Seamless One-piece Rubber Roof w/ 12 Year Warranty
- Double Wipe Slide-out Seal
- R-7 Insulation Throughout (Floors, Walls, Ceilings, and Slide-outs)
- Galvanized Steel Wheelwells with Fiberglass Insulation (except slide-outs)

SECURITY AND SAFETY

- Smoke Detector
- Fire Extinguisher
- Carbon Monoxide Detector
- LP Gas Leak Detector
- Flush Door Latch with Integral Dead Bolt Lock
- Main Entry Step Light with Interior Switch
- Amber Porch Light with Interior Switch
- Main Entry Doorside Scare Light
- Screen Door with Safety Latch
- GFI Receptacles and Covered Patio Outlet
- Welded Heavy Duty Safety Chains
- Hitch Light
- E-Z Open Entry Steps
- Lockable Fiberglass Radius Baggage Doors

POPULAR OPTIONS

- Safety Glass Black Framed Tinted Windows
- Fiberglass Exterior w/ 16" Tires and 6,000 lb Axles
- Skylight over Tub
- Garden Tub Glass Door (per floorplan)
- Garden Shower with Glass Door (per floorplan)
- Extra Large 8 cu-ft Double Door RV Refrigerator (IPO House Type)
- La-Z-Boy® Living Room Furniture (A Forest River Exclusive)
- Double Sofa Hide-A-Bed
- Queen Size Hide-A-Bed with Flip-up Footrests
- Free Standing Coordinated Dinette w/4 chairs and Flip Leaf
- Second Drawer under Dinette (n/a with Free Standing Dinette)
- Atrium Window
- Phone Jack
- DVD Stereo 10+2 Surround Sound System
- Bar Stools (per floorplan)
- Stabilizer Jacks
- Detachable Hitch
- Outside Shower
- 10-gallon Gas/Electric DSI Water Heater (IPO 20 gal Electric)
- Slide Room Awning(s)
- Spare Tire, Carrier and Cover
- Exterior LP Gas Grill
- Ceiling Paddle Fan(s) w/ Wall Switch
- Living Room Carpet in front of Slide Only

Contact your Salem dealer for a complete list of options



20,000 SQUARE FEET OF QUALITY ASSURANCE. NEVER QUESTION QUALITY AGAIN.

Brought online in 2005, Forest River is unveiling its new state of the art test facility. This beautiful building will blend many of the old "tried and true" methods of testing our diverse types of RV's with new innovative tests in order to continually improve the quality of our Forest River products. Being centrally located to most Forest River manufacturing facilities, this 20,000 square foot PDI (Pre-delivery Inspection) test building will give immediate daily feedback to individual managers. This will assure the production facilities and quality assurance personell that Forest River RV's are "green" and ready to ship.



PEACE OF MIND.

Forest River RV's also feature one year of free roadside assistance with every 2006 Salem purchase. This is just one more way to say "Thank you" and to ensure that all of our customers have an enjoyable traveling experience.



PRESSED FOR PERFECTION.

Forest River has also developed a new to the industry external air pressure device for pinpointing water leaks. Used in conjunction with the rain booths, this "Blue Blower" raises the air pressure in any RV to where the escaping air produces a telltale bubble at the exact point that water could invade! Incredible how a simple solution can be an invaluable tool to a billion dollar industry!

All specifications contained herein are based on the latest product information at time of printing. Forest River reserves the right to make changes in colors, materials, equipment and specifications at any time without notice and assumes no responsibility for any errors in this brochure.



Forest River, Inc.
914 C.R. 1
Elkhart, IN 46514
(574) 533-5934
www.forestriverinc.com
www.forestriveraccessories.com

YOUR SALEM DEALER