



Space[®]



Luxury Lightweight Travel Trailers





*Spree - A thoroughly original high-end travel trailer from K-Z!
True luxury in every sense of the word.*

3281K
twilight
décor



Fresh from our design department, the 2016 Spree is aimed at seasoned vacationers who know what they want and are unwilling to compromise.



Kitchens boast stainless steel appliances and designer high-definition countertops.



New everything, including wood, wallboard, linoleum, soft goods, crown molding, glass-covered oven, 5-inch dinette cushions and LED lighting. Outside, a painted cap, new graphics and a 30-inch entry door.



Spree bedrooms include a cotton cloud deep quilt mattress with body pillow and bedspread, designer headboard and generous closet and wardrobe storage.

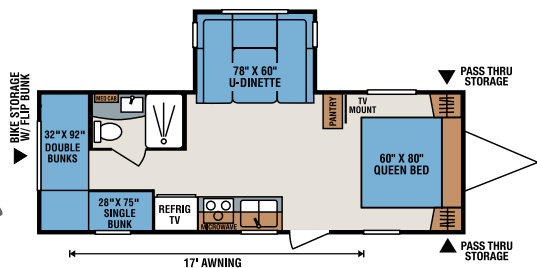


Plentiful storage and easy-clean flooring.

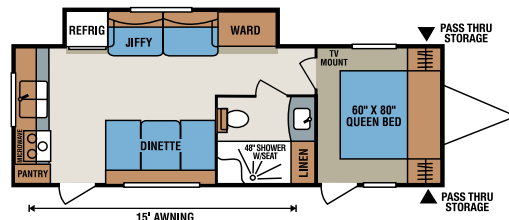


Power bath vent and skylight over the tub.

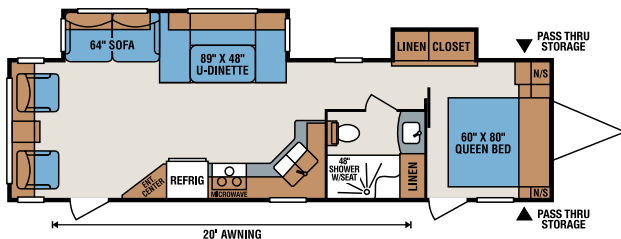
All these great Spree floorplans to choose from!



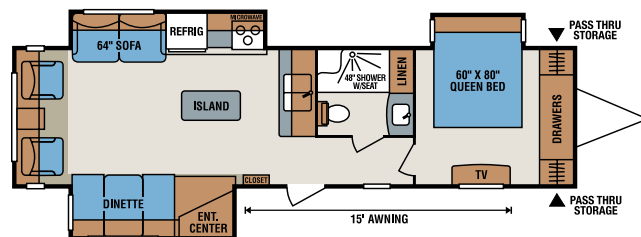
240BHS



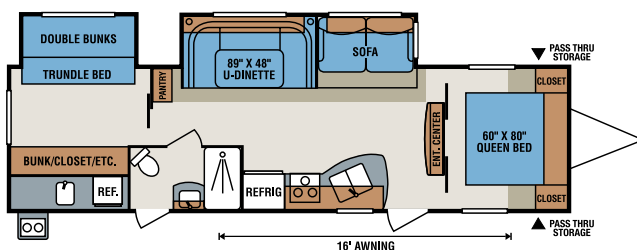
262RKS



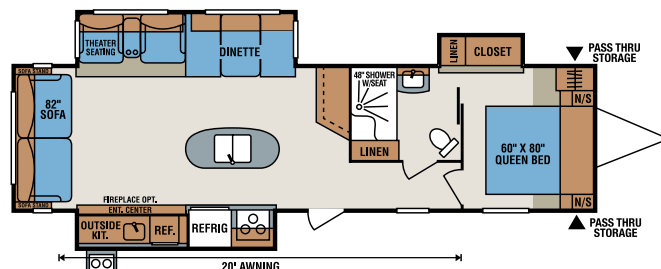
300RLS



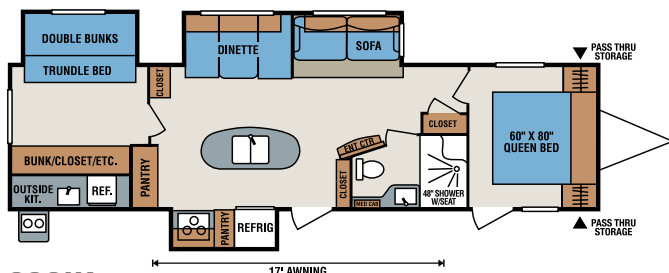
320BS



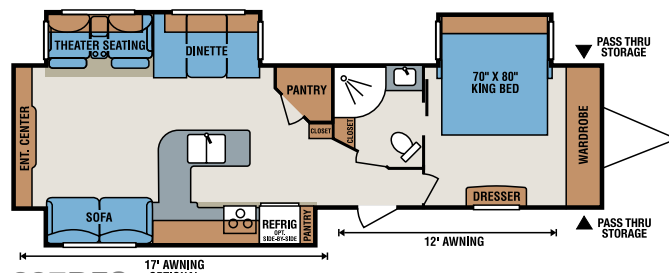
322BHS



328IK



329IK

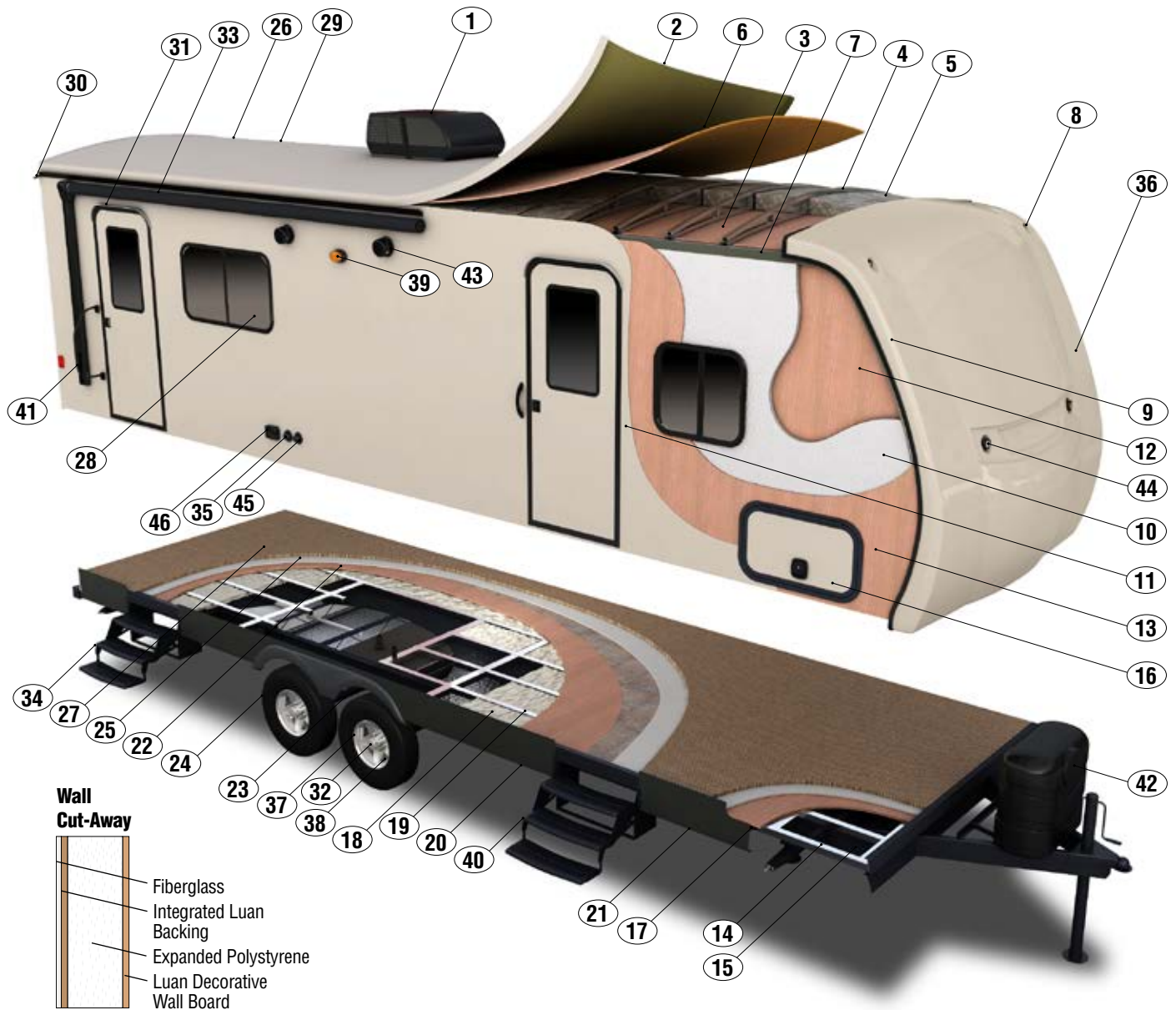


337RES

Travel Trailers	240BHS	262RKS	300RLS	320BS	322BHS	328IK	329IK	337RES
UVW (Unloaded Vehicle Weight)*	5,160	5,590	6,970	7,770	7,150	8,160	8,130	8,410
Dry Hitch Weight*	570	600	970	900	720	740	860	1,020
Dry Axle Weight*	4,590	4,990	6,000	6,870	6,430	7,420	7,270	7,390
NCC (Net Carrying Capacity)	1,340	1,210	1,330	1,530	1,150	1,340	1,370	1,090
GVWR	6,500	6,800	8,300	9,300	8,300	9,500	9,500	9,500
Interior Height	82"	82"	82"	82"	82"	82"	82"	82"
Exterior Height w/ A/C	11' 2"	11' 1"	11' 2"	11' 3"	11' 2"	11' 6"	11' 6"	11' 6"
Exterior Width	96"	96"	96"	96"	96"	96"	96"	96"
Exterior Length	28' 3"	28' 8"	34' 5"	36' 5"	35' 8"	36' 2"	36' 6"	37' 4"
Refrigerator (cu. feet)	6	8	8	8	8	8	8	8
Water Heater Cap. (gal. G/E w/DSI)	6	6	6	6	6	6	6	6
Fresh Water Cap. (gal.)	40	40	40	40	40	40	40	40
Waste Water Cap. (gal.)	32	32	32	32	32	32	32	32
Gray Water Cap. (gal.)	32	64	32	32	32	32	56	32
LP Gas Cap. (lbs.)	60	60	60	60	60	60	60	60
Furnace BTUs (1,000s)	20	20	30	30	30	30	30	30
Tire Size	15"	15"	15"	15"	15"	15"	15"	15"
Awning	17'	15'	20'	15'	16'	20'	17'	12' w/17' opt.

*This weight reflects the rolling average unit weight for each model. Your trailer weight will vary according to optional equipment.

TOTAL ALUMINUM FRAME



- | | | |
|---|--|---|
| 1 13,500 BTU A/C | 17 Heavy Duty I-beam Frame Construction | 31 30" Radius Entrance Door |
| 2 SuperFlex Seamless 1-Piece Roofing Material | 18 R-7 Batten Insulation | 32 Easy Lube Axles |
| 3 Vinyl Interior Ceiling Panel | 19 2x3 Double Welded Aluminum Floor Joists, 16" O.C. | 33 Standard Awning |
| 4 4 1/2" Arched Aluminum Truss Rafters, 16" O.C. | 20 Heated & Enclosed Underbelly | 34 Triple Steps |
| 5 R-7 Batten Insulation | 21 Fully-Welded Outriggers | 35 Cable Hookup |
| 6 3/8" Walkable Roof Decking | 22 5/8" Tongue & Groove Plywood Decking | 36 Aerodynamic F/G Front Cap |
| 7 Heavy Duty Aluminum Headers | 23 Heavy Duty Leaf Springs | 37 Auto-Adjusting Brakes |
| 8 Exterior Clearance & Brake Lights | 24 15" Radial Tires | 38 Aluminum Rim (Option) |
| 9 Aluminum Frame Front & End Walls | 25 Residential Style Carpet Pad | 39 Porch Light |
| 10 Expanded Polystyrene R-7 | 26 Rack & Pinion Electric Slide w/Manual Override w/Box Tube Slideout Ram | 40 Triple Entry Step |
| 11 High Gloss Ivory Exterior F/G | 27 Residential Carpet or Linoleum | 41 Large Assist Grab Handle |
| 12 1/8" Luan Decorative Wallboard | 28 Tinted Safety Glass Windows | 42 (2) 30# LP Tanks w/Flip-Up Access Lid |
| 13 1/8" Luan | 29 Triple Sealed Slideouts | 43 2 Exterior Speakers |
| 14 3" Aluminum Stringer | 30 Extra Long Drip Spouts | 44 LED Lights |
| 15 Darco® Corrugated Moisture Barrier | | 45 Satellite Hookup |
| 16 Extra-Large Slam Latch Radius Baggage Doors | | 46 110 Outlet |



Dawn



Patina



Twilight

Standards

Living Room/Kitchen

Barrel Ceiling w/Contrasting Accent Trim
LED Lighting Inside & Out
Crown Molding w/LED Lights
Free-Standing Residential Sofa
Custom Wall Border
Nightshades
AM/FM/CD/DVD Bluetooth Player w/USB Port
Hard Lambrequins & Valances
Designer High-Definition Countertops
Decorative Designer Kitchen Backsplash
8 CU FT Stainless Steel Refrigerator (N/A 240BHS)
Flush-Mounted Range w/Smooth Glass Cover
Stainless Steel Oven
Stainless Steel Microwave w/Turntable
Sink w/Cover & Residential Pulldown Faucet
Pendant Lights over Island (where applicable)
Large Overhead Cabinets
Solid Wood-Framed Mortise & Tenon Glazed Cabinet Doors
Drawers under Refrigerator & Ovens (where applicable)
Roller Ball Bearing Drawer Guides
Kitchen Skylight
Monitor Panel

Bedroom/Bath

Cotton Cloud Deep Quilt Mattress
Decorative Bedspread w/Body Pillow
Designer Headboard
Gas Struts on Bed Base
Power Bath Vent
Bath Skylight

Construction

1-Piece Seamless Roof w/SuperFlex Roofing Material
3/8" Fully Walk-On Roof Decking
New Gelcoat Smooth Streamline Painted Front Cap
6-Sided Aluminum Frame
High Gloss Ivory Color Infused Gel F/G Sidewalls
5/8" Tongue & Groove Plywood Floor
Heated & Enclosed Underbelly

Exterior

SuperFlex® Flexible Roofing
Awning w/Drip Rail & Spouts
Tinted Windows
30A Service
30 LB LP Bottles & Cover w/Flip-Up Access Lid
13,500 BTU A/C
Exterior Shower
Outside Speakers
30" Radius Entry Door
Large Assist Grab Handle

Triple Step

Patio Door Light
Slam Latch Baggage Doors
Satellite Prep
Cable Hookup
TV Antenna w/Booster
6 GAL Gas/Electric DSI Water heater
Black Tank Flush
Rear Bumper w/Sewer Hose Storage
15" Tires
Easy Lube Axles
Self-Adjusting Brakes
4 Stabilizer Jacks

Options

Exterior Refrigerator in Front Storage Compartment (F/P specific)
Outside Grill
2nd A/C (incl. 50A)
Recliner (1 or 2) (320BS & 300RLS)
Theater Seating (forced option on 328IK & 337RES)
Table & 4 Chairs w/Leaf (N/A 240BHS, 262RKS)
Jiffy Sofa w/Flip-Up Bunk (322BHS, 329IK)
Bunk Ladder & Railing (322BHS, 329IK) (N/A w/Jiffy in bunk)
12 CU FT Side-By-Side Refrigerator (337RES)

LX Package

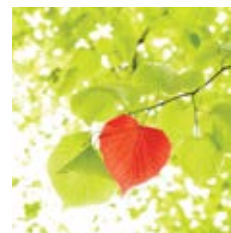
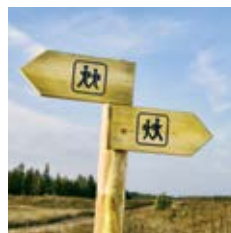
Cotton Cloud Deep Quilt 60" x 80" Gel Foam Mattress
LED TV (32" or 39")
Multi-Directional Lighted Power Awning
Porcelain Toilet
15" Aluminum Wheels
Equa-Flex™ Suspension
Spare Tire/Carrier/Cover

Elite Package

15,000 BTU A/C
Ladder
Frameless Windows
Maxxair® Bedroom Vent
Power Front/Rear Stabilizer Jacks
Power Tongue Jack
Flip-Up Bike Rack/Cargo Tray

Diamond Package

- Wired for 2nd A/C w/50A Service
- Deluxe Sleeper Sofa
- Fireplace (N/A 240BHS, 262RKS, 329IK)
- Solid Surface Countertops



RVIA

Dealer:

985 N 900 W • Shipshewana, IN 46565
E-mail kz@kz-rv.com • www.kz-rv.com

Due to continual research and advances, manufacturer reserves the right to change specifications, design, price and equipment without notice, and assumes no responsibility for any error in this literature. Some items shown are not included as standard or optional equipment. ©2015KZ | 3/20/15 | 30M