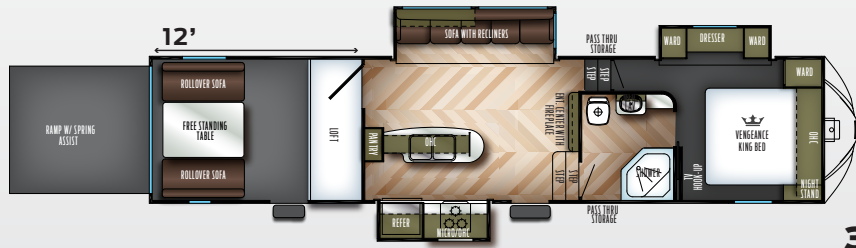
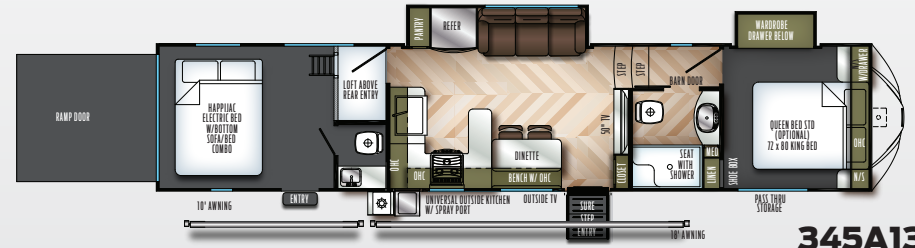


# VENGEANCE

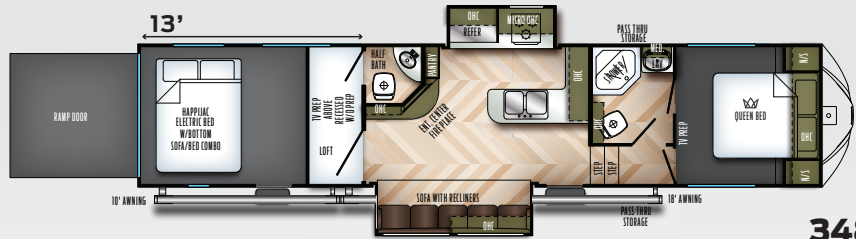
## FIFTH WHEELS



**320A**



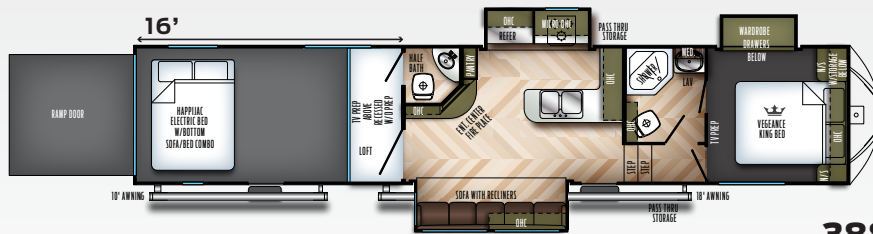
**345A13**



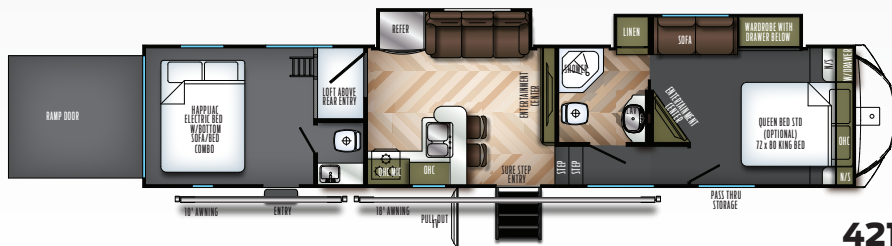
**348A13**



**377V**

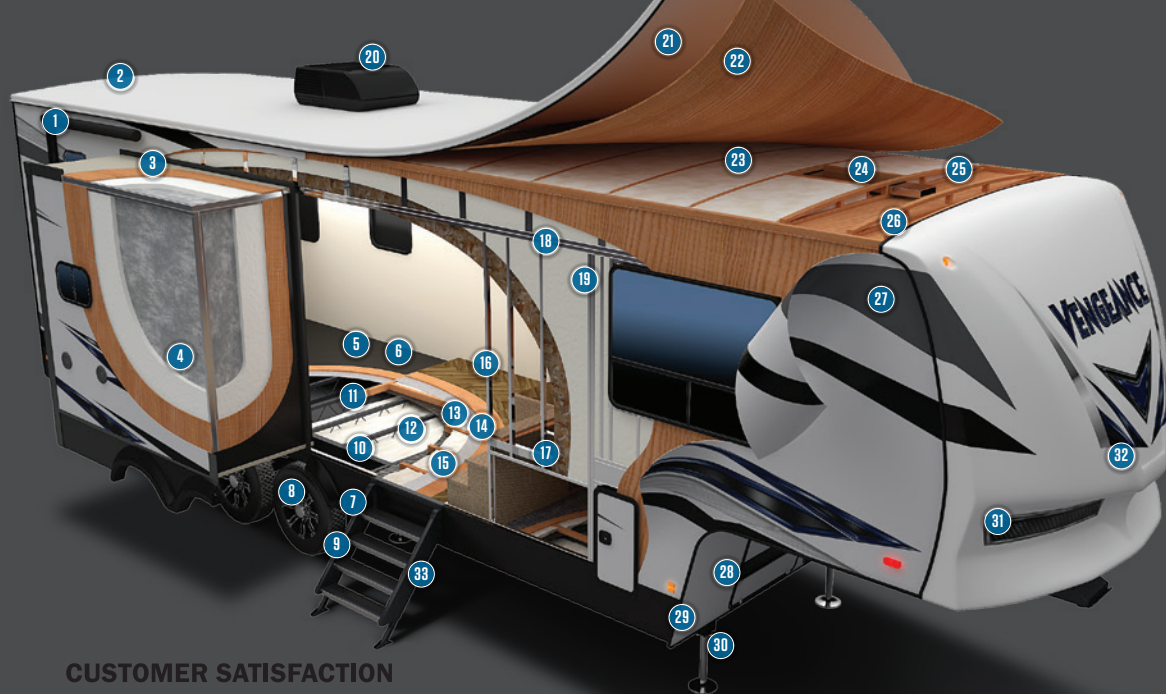


**388V16**



**421V13**

	<b>320A</b>	<b>345A13</b>	<b>348A13</b>	<b>377V</b>	<b>388V16</b>	<b>421V13</b>
Dry Hitch Weight	2398-lbs.	2398-lbs.	2718-lbs.	2646-lbs.	3380-lbs.	2888-lbs.
Unloaded Vehicle Weight	11939-lbs.	11939-lbs.	11995-lbs.	13275-lbs.	13370-lbs.	13362-lbs.
Axle Weight	9482-lbs.	9482-lbs.	9218-lbs.	10570-lbs.	9990-lbs.	10415-lbs.
GVWR w/Brakes	16000-lbs.	16000-lbs.	16398-lbs.	18000-lbs.	18000-lbs.	18000-lbs.
Cargo Carrying Capacity	4061-lbs.	4061-lbs.	4403-lbs.	4725-lbs.	4571-lbs.	4638-lbs.
Exterior Length	39'-8"	39'-8"	40'-10"	42'-4"	43'-10"	42'-8"
Exterior Height w/ AC	13'-4"	13'-4"	13'-4"	13'-4"	13'-4"	13'-4"
Exterior Width	102"	102"	102"	102"	102"	102"
Grey Capacity	50-Gal.	50-Gal.	80-Gal.	80-Gal.	100-Gal.	100-Gal.
Black Capacity	50-Gal.	50-Gal.	80-Gal.	80-Gal.	50-Gal.	50-Gal.
Fresh Capacity	100-Gal.	100-Gal.	100-gal	100-gal	100-Gal.	100-gal
Awning Size	21'	21'	21'	21'	18' & 10'	18' & 10'
Cargo Area Size-Off DS	144"	146"	156"	144"	192"	144"
Cargo Area Size-DS	144"	146"	156"	144"	192"	144"



# VENGEANCE CONSTRUCTION

QUALITY BUILT EVERY TIME.

- |   |   |
|---|---|
| 1 Dual power awnings w/ LED strip lighting (select floor plans) | 17 Aluminum framed laminated bed/bath floor                   |
| 2 Full walk-on roof   | 18 2" Welded aluminum wall studs                              |
| 3 Aluminum framed, vacuum bonded, slide out roof                | 19 Block foam wall insulation                                 |
| 4 Aluminum framed, vacuum bonded, slide out side walls          | 20 15,000 BTU A/C   |
| 5 1" garage floor decking w/3,000 lb cargo capacity             | 21 One piece PVC roof material                                |
| 6 "Dur-a-Poxy" EZ Clean Cargo Flooring in Garage                | 22 3/8" Roof decking  |
| 7 7,000 lb. Axles   | 23 Baton insulation layer                                     |
| 8 Equa Flex Suspension  | 24 Bedroom A/C Prep   |
| 9 Standard G-Rated Tires  | 25 5" Bowed wood truss rafters                                |
| 10 True wide I-Beam chassis                                     | 26 PVC foam A/C ducting                                       |
| 11 Fluted polypropylene enclosed underbelly                     | 27 Vacuum bonded fiberglass side walls                        |
| 12 Baton insulation layer                                       | 28 102" Wide body   |
| 13 Polyethylene subfloor wrap                                   | 29 Electric front landing gear on 2 axle models               |
| 14 2x3 Wood floor joists  | 30 Hydraulic Auto Leveling Option (Not Shown on Illustration) |
| 15 Baton insulation   | 31 Aerodynamic front cap design                               |
| 16 Tongue in groove plywood floor                               | 32 Painted fiberglass front cap w/LED lighting                |
|   | 33 MORryde Step Above   |

## CUSTOMER SATISFACTION



[www.ForestRiverBuyLocal.com](http://www.ForestRiverBuyLocal.com)

## SUPERIOR FEATURES TOP TEN REASONS TO BUY

- 6 Sided Vacuum Bonded Walls
- Gray Gel-Coat Fiberglass Exterior
- Dexter (R)Torsion Axle
- Fully Walkable-Bonded Ceilings
- Fully welded Aluminum Super Structure
- Fully Enclosed and Heated Underbelly (Main Floor)
- Painted Fiberglass front cap w/LED's
- 30 Gallon Fuel Station and Gen Prep
- Mega Deep 7'2" Tall Slideouts
- LED interior lights and USB Charging Station

**EASY APPROACH™**  
HYDRAULIC LOADING SYSTEM

Industry first toy hauler hydraulically actuated torsion axle pod lowers the rear end of the unit up to 10" providing for a lower ramp door approach angle.

Standard rigid

Easy Approach activated

Up to 6" ramp angle reduction

Up to 10" lowering

**Change your approach with Easy Approach!**

**Increased Safety and Ease of Loading and Unloading**

- Specifically engineered "heavier duty" design improves approach angle at the rear of the garage area decreasing the garage floor approach angle by up to 2 degrees.
- Lower approach angle makes loading and unloading of toys safer and easier.
- Minimizes the risk of bottoming out golf carts, motorcycles and other toys.

**Torsion axles vs Leaf Spring**

- Independent suspension versus leaf spring dependent suspension
- Substantiated torsion beam provides for a smooth, quiet ride by absorbing road shock and vibration
- Less required maintenance to the suspension components versus leaf spring axle.
- Improved suspension protects your investment into your RV and toys

Easy Approach exclusively installed on  
**VENGEANCE**

[lippertcomponents.com](http://lippertcomponents.com)



**Learn More**  
Scan this barcode using a QR Reader on your smart phone to learn more about Forest River.



A Berkshire Hathaway company.

## YOUR VENGEANCE DEALER

**GVWR (Gross Vehicle Weight Rating)** - is the maximum permissible weight of the unit when fully loaded. It includes all weights, inclusive of all fluids, cargo, optional equipment and accessories. For safety and product performance do NOT exceed the GVWR.

**GAWR (Gross Axle Weight Rating)** - is the maximum permissible weight, including cargo, fluids, optional equipment and accessories that can be safely supported by a combination of all axles.

**UVW (Unloaded Vehicle Weight)\*** - is the typical weight of the unit as manufactured at the factory. It includes all weight at the unit's axle(s) and tongue or pin and LP Gas. The UVW does not include cargo, fresh potable water, additional optional equipment or dealer installed accessories.

\*Estimated average based on standard build optional equipment.

**CCC (Cargo Carrying Capacity)\*\*** - is the amount of weight available for fresh potable water, cargo, additional optional equipment and accessories. CCC is equal to GVWR minus UVW. Available CCC should accommodate fresh potable water (8.3 lbs per gallon). Before filling the fresh water tank, empty the black and gray tanks to provide for more cargo capacity.

\*\* Estimated average based on standard build optional equipment

Each Forest River RV is weighed at the manufacturing facility prior to shipping. A label identifying the unloaded vehicle weight of the actual unit and the cargo carrying capacity is applied to every Forest River RV prior to leaving our facilities.

The load capacity of your unit is designated by weight, not by volume, so you cannot necessarily use all available space when loading your unit.

All information contained in this brochure is believed to be accurate at the time of publication. However, during the model year, it may be necessary to make revisions and Forest River, Inc., reserves the right to make all such changes without notice, including prices, colors, materials, equipment and specifications as well as the addition of new models and the discontinuance of models shown in this brochure. Therefore, please consult with your Forest River, Inc., dealer and confirm the existence of any materials, design or specifications that are material to your purchase decision.

Litho. U.S.A. FOR 1490 P / W: 20171212