

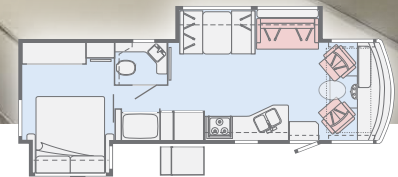


SUNSTAR

WINNEBAGO



On the Cover: 32YE Scarlet Graphics
 Interior: 32YE Inspire with Coffee-Glazed Honey Cherry Cabinetry



This brochure features the Sunstar 32YE Floorplan

Welcome Home

With four affordable, family-friendly floorplans built to Winnebago's® legendary construction standards, the Sunstar® is the perfect introduction to the Class A lifestyle. Each floorplan boasts at least one slideroom and is loaded with standard features such as LED lighting, MCD roller shades and an easy-to-swivel Versa cab driver's seat. With an exterior kitchen

featuring a portable RV grill, stainless steel sink with faucet and refrigerator that will make your tailgate dreams come true, the 29VE and 31BE floorplans have much to envy. If you have Class A ambitions and a modest budget, you'll find a home in the Sunstar.

Sunstar | Lounge

The spacious lounge and dining area make your Sunstar ideal for gearing up or winding down after a big day. Swivel cab seats join the dinette and comfortable sofa/bed to provide ample seating, which comes in handy when you dial up a movie on the satellite system-ready 40" HDTV. The Sunstar's LED lighting, tinted windows and MCD blackout roller shades let you light the stage perfectly.





Sunstar | Galley

Turn an ordinary meal into a feast in the Sunstar's large, well-equipped galley. The flush-mounted 3-burner range, oven, and microwave provide plenty of cooking options, while the large stainless steel double-bowl sink makes short work of cleanup. All floorplans also include a convenient pantry, double-door refrigerator/freezer and powered ventilator ceiling fan.

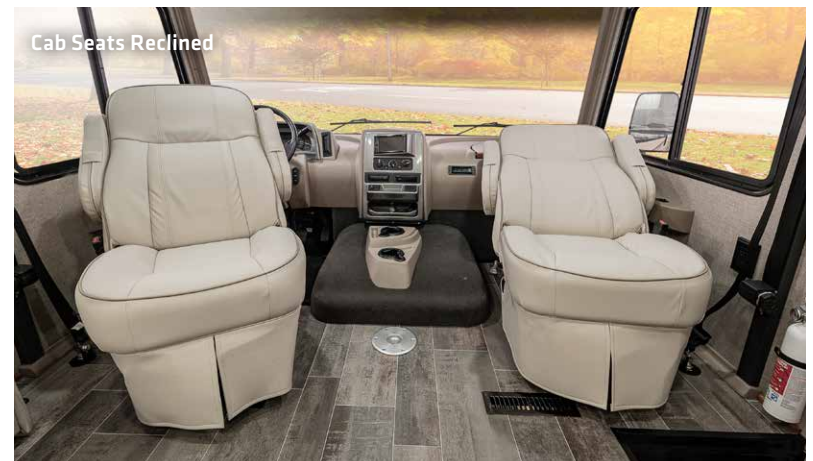
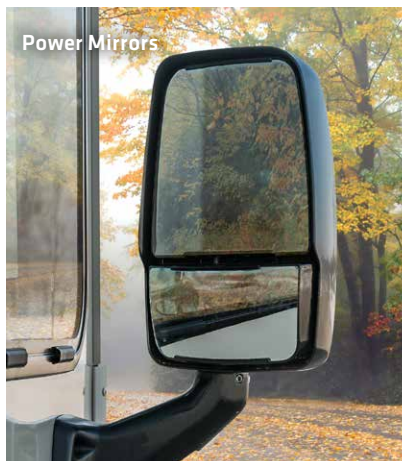


The Sunstar's master bedroom features a walkaround king bed with nightstand (27PE, 32YE) or a queen bed (29VE, 31BE) with cabinet storage on either side, as well as an available HDTV. If you're bringing a crowd, the bunk beds (and optional DVD players with monitors) in the 31BE floorplan provide a cozy retreat for the kids. In every floorplan, the convertible sofa/bed and optional powered StudioLoft™ bed supply added sleeping capacity. The bath includes a shower with flexible showerhead, textured glass or retractable screen (27PE) shower door, as well as a skylight, powered roof vent, medicine cabinet and towel racks.





Your journey is as enjoyable as the destination, thanks to the Sunstar's well-equipped cab. The Primera® cab seats feature lumbar support, two-position armrests, and adjustable slide, recline and swivel functions (handy when using the removable utility table). The Bluetooth® -compatible radio/rearview monitor system includes a 6.2" LCD color touch screen and rear color camera, and is Apple® and Android® compatible. The included dash workstation includes both USB and 12-volt powerpoints, making it easy for your co-pilot to keep devices fully charged. Powered mirrors with defrost are also standard, as is the powered MCD blackout roller visor/shade for the front windshield.



Powered Patio Awning



On the road, the Sunstar's Premium high-gloss sidewalls will turn heads. Once you arrive in camp, the powered patio awning with LED lighting makes a perfect protected patio. The standard exterior entertainment center features an HDTV and speakers; you can also take outdoor living to the next level with the Tailgate Package (29VE, 31BE) that includes a refrigerator, portable grill, stainless steel sink, ice chest and more.



Exterior Entertainment

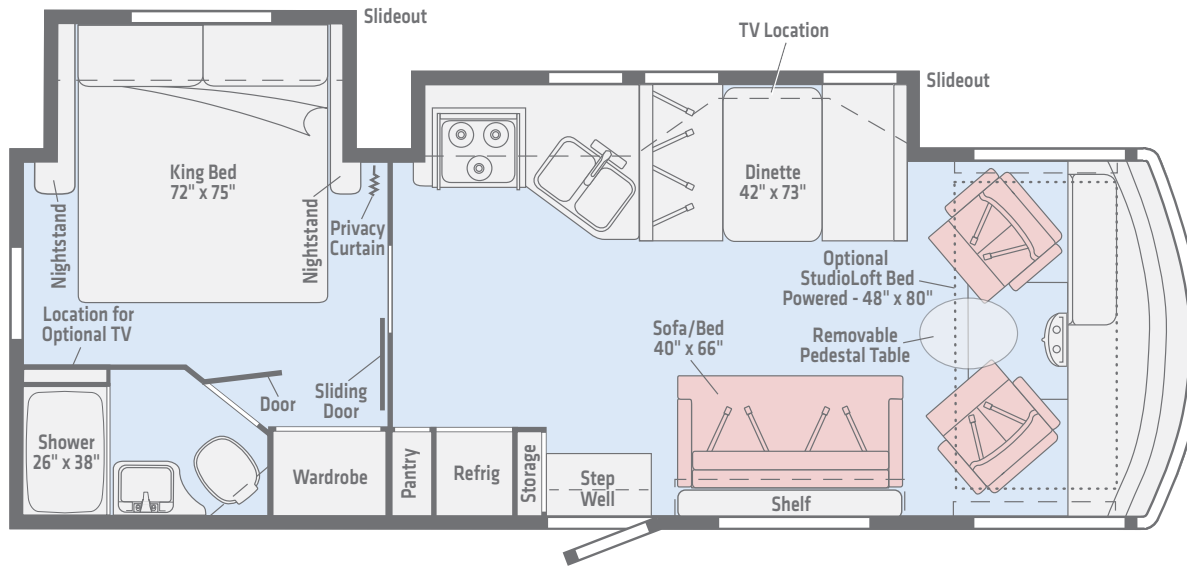


Exterior Storage



Exterior Storage

27PE



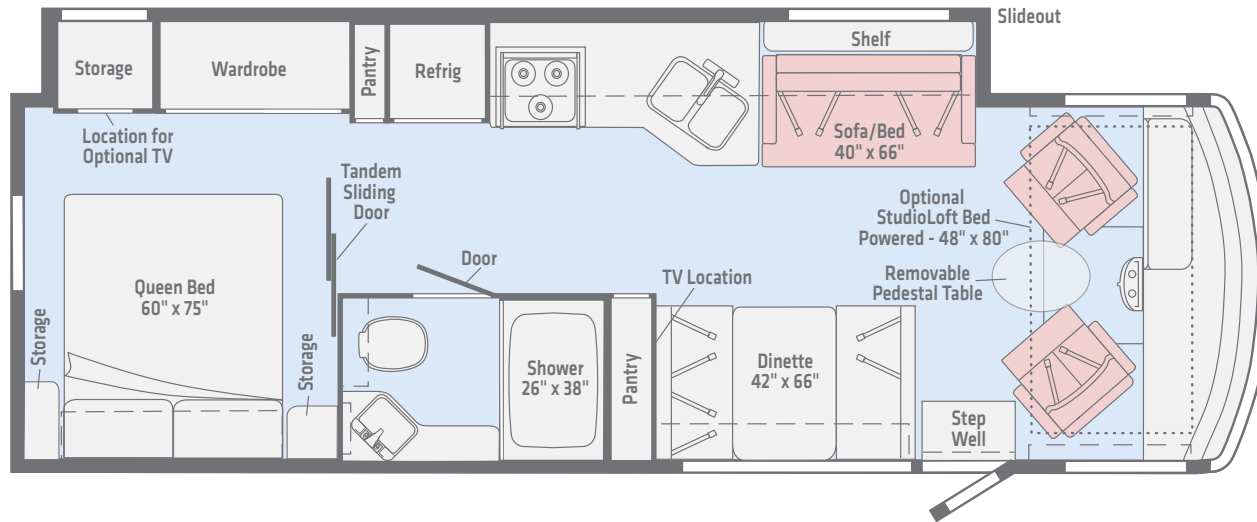

Primera


Vinyl

Length 28'8"
Ext. Storage (cu. ft.) 133
Seating 6

Dimensions shown are for sleeping and shower space only and may vary due to styling differences. Dashed lines denote overhead storage areas. Floorplans and specifications are also available online at WinnebagoInd.com.

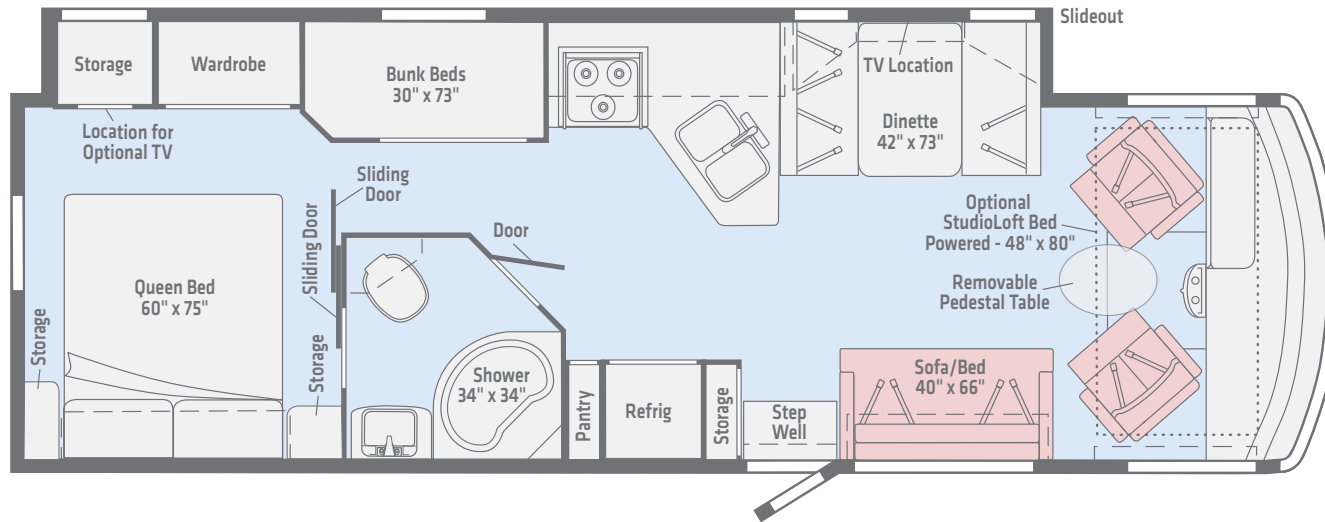
29VE



Length 30'3"
Ext. Storage (cu. ft.) 145
Seating 7

Dimensions shown are for sleeping and shower space only and may vary due to styling differences. Dashed lines denote overhead storage areas. Floorplans and specifications are also available online at WinnebagoInd.com.

31BE



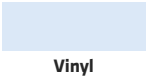
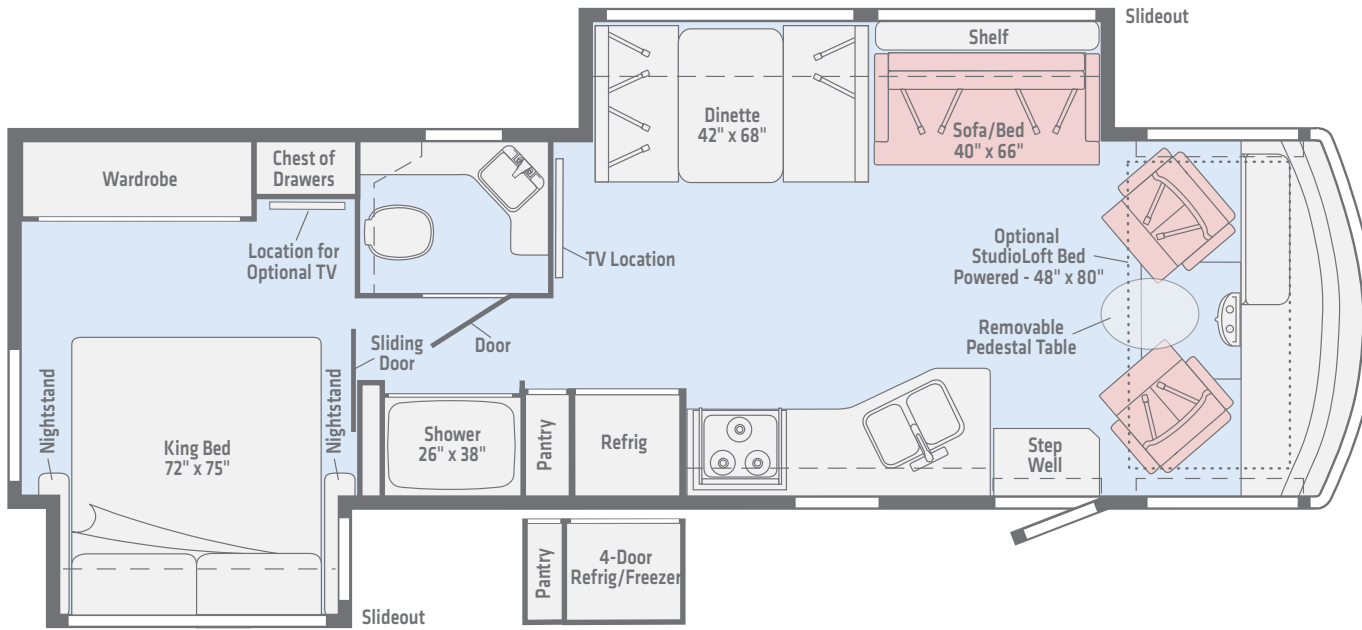
Primera

Vinyl

Length 32'3"
Ext. Storage (cu. ft.) 147
Seating 7

Dimensions shown are for sleeping and shower space only and may vary due to styling differences. Dashed lines denote overhead storage areas. Floorplans and specifications are also available online at WinnebagoInd.com.

32YE



Length 32'11"
Ext. Storage (cu. ft.) 124
Seating 7

Dimensions shown are for sleeping and shower space only and may vary due to styling differences. Dashed lines denote overhead storage areas. Floorplans and specifications are also available online at WinnebagoInd.com.

Choose from two Deluxe Graphics packages.



Deep Sea
DELUXE GRAPHICS

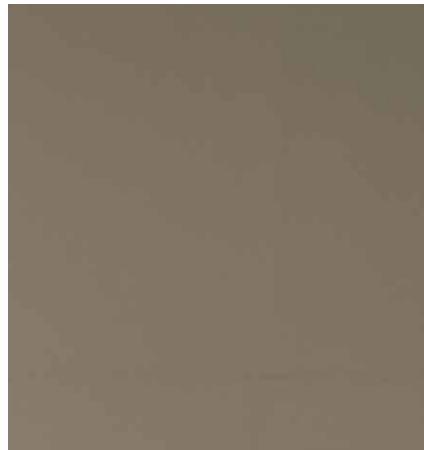


Scarlet
DELUXE GRAPHICS

Inspire



Primer



Primer Accent



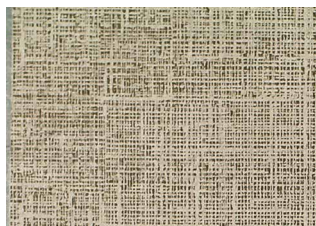
Feature Fabric



Vinyl Flooring



Bedspread



Wall Board



Thermoform Countertop



Backsplash

Wood



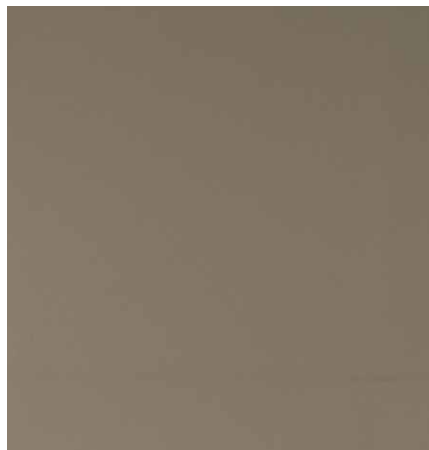
Coffee-Glazed Vienna Maple



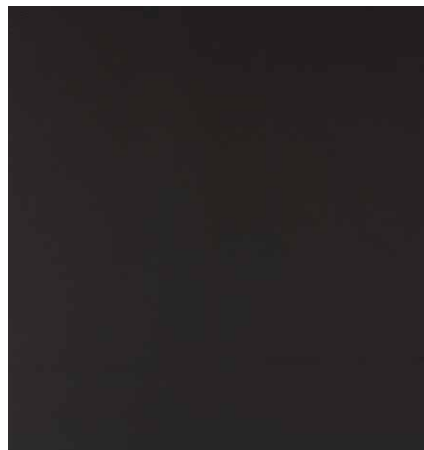
Coffee-Glazed Honey Cherry

Winnebago® reserves the right to change décor materials and specifications without notice or obligation.

Pinnacle



Primera



Primera Accent



Feature Fabric



Vinyl Flooring



Bedsread



Wall Board



Thermoform Countertop



Backsplash

Wood

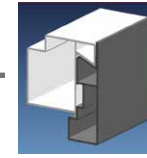
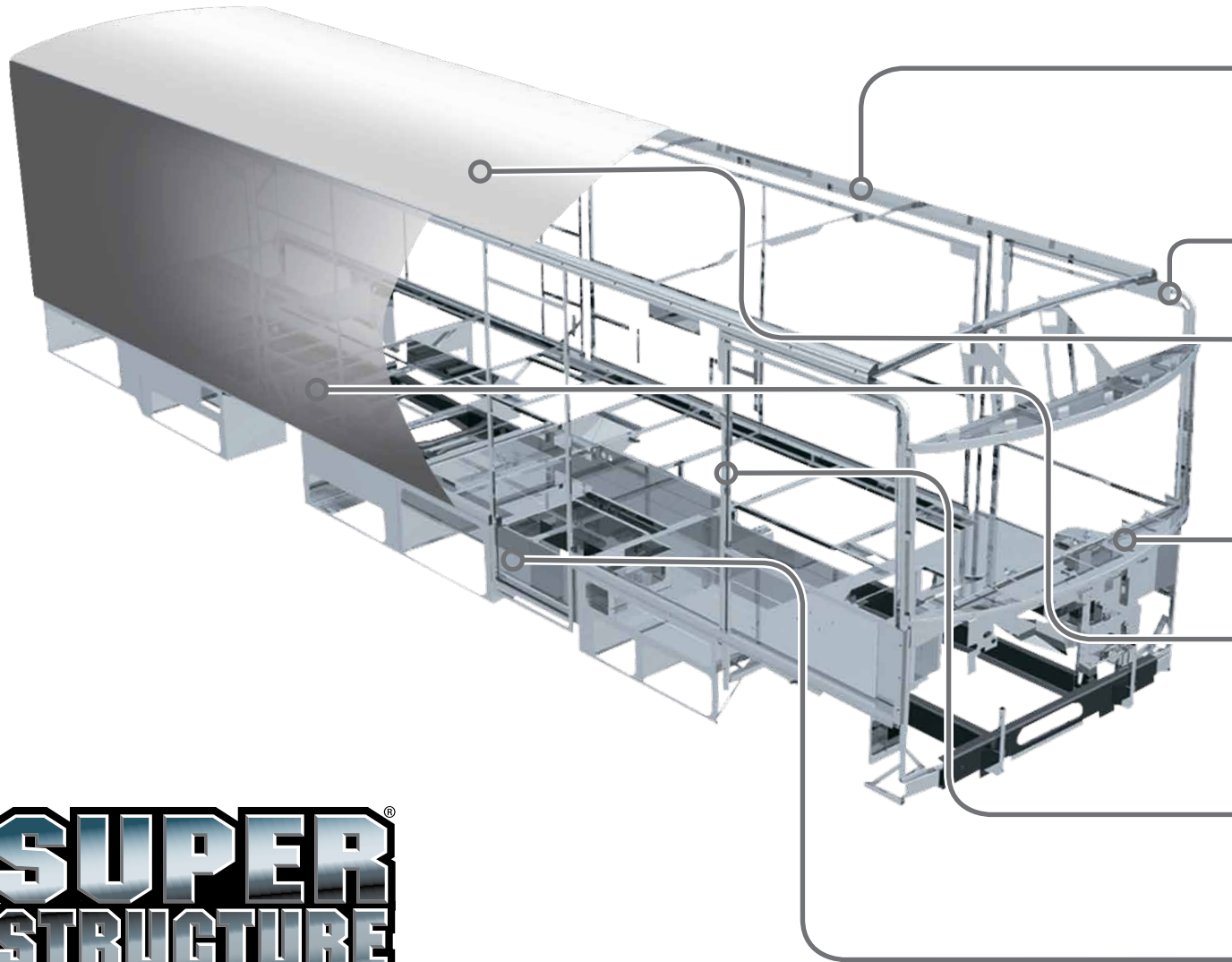


Coffee-Glazed Vienna Maple



Coffee-Glazed Honey Cherry

Winnebago® reserves the right to change décor materials and specifications without notice or obligation.



Interlocking Joints Specially engineered interlocking joints connect the floor, sidewalls, and roof where competitors often rely on simple screws to bear the weight.



Laser-Cut Tubing Precision laser cutters create precise joints in structural steel that are stronger and require less welding.

Fiberglass Roof The one-piece fiberglass roof is backed by a 10-year limited parts-and-labor roof skin warranty.

Solid Framework Structural extruded aluminum creates an extremely strong and solid frame.

Thermo-Panel® Sidewalls By layering fiberglass and high-density block foam insulation with welded aluminum support structures, we create some of the industry's strongest, most durable, and lightweight sidewalls.

Embedded Steel Metal substructures embedded into the sidewall provide solid attachment points to keep cabinets and appliances mounted securely in place.

E-coating An electrodeposition coating helps protect critical steel components.

**SUPER
STRUCTURE**

BUILT TO LAST

From our smallest Class C coach to our largest diesel-pusher, coaches are built to Winnebago's legendary SuperStructure® construction design. It's a process developed and refined over more than 60 years of building some of the strongest, most durable coaches in the industry.

Kenny and Sabrina Phillips

Several years ago, it seemed like the only time Kenny and Sabrina really had together was on vacation. So Sabrina, a pulmonary/critical care physician who travels to different locations for work, and Kenny, a small business owner, decided to downsize and simplify.

Kenny sold his business and they became full-time RVers in their Winnebago Vista® LX.

As they put it, "We have laughed, loved, and experienced more in the last 12 months living in our Winnebago than we have in the last nine years."

You can learn more about Sabrina and Kenny at WinnebagoLife.com. You'll also find hundreds of other great stories from GoLife's outstanding contributors along with how-to articles, gear reviews, RVing tips, and much more.



To learn more about the Phillips' adventures, visit:



WinnebagoLife.com/about



Weights & Measures	27PE	29VE	31BE	32YE
Length	28'8"	30'3"	32'3"	32'11"
Exterior Height ¹	12'2"	12'2"	12'2"	12'2"
Exterior Width ²	8'5.5"	8'5.5"	8'5.5"	8'5.5"
Exterior Storage ³ (cu. ft.)	133	145	147	124
Awning Length	19'	17'	19'	17'
Interior Height	6'8"	6'8"	6'8"	6'8"
Interior Width	8'0.5"	8'0.5"	8'0.5"	8'0.5"
Freshwater Tank Capacity ⁴ (gal.)	51	70	70	64
Water Heater Capacity (gal.)	6	6	6	6
Holding Tank Capacity - Black/Gray ³ (gal.)	50/45	40/61	43/59	41/57
LP Capacity ⁵ (gal.)	18	18	18	18
Fuel Capacity (gal.)	80	80	80	80
GCWR ⁶ (lbs.)	23,000	23,000	23,000	23,000
GVWR (lbs.)	18,000	18,000	18,000	18,000
GAWR - Front (lbs.)	7,000	7,000	7,000	7,000
GAWR - Rear (lbs.)	12,000	12,000	12,000	12,000
Wheelbase	178"	190"	208"	208"
Seating Capacity	6	7	7	7

Optional Package Upgrade

Tailgate Package refrigerator, 3-drawer cabinet, LED lights, portable grill w/folding stand, Quick-Connect LP hose, stainless steel sink, ice chest with drain plug, silverware tray, wall-mounted bottle opener, garbage bag holder, paper towel holder (29VE, requires ordering the 1000-watt inverter option)

Cooling Upgrade Package w/two AC receptacles, 50-amp. power cord, 5,500-watt Cummins Onan[®] MicroQuiet™ gas generator (29VE, 32YE)

Ford[®] F53 Chassis

3-valve Triton[®] V10 engine SEFI, TorqShift™
6-speed automatic transmission w/tow/haul, 175-amp. alternator

Hydraulic brakes w/ABS

Trailer Hitch[®] 5,000-lb. drawbar/500-lb. maximum vertical tongue weight

7-pin connector

Stainless steel wheel liners

Automatic hydraulic leveling jacks

Rear valve stem extensions

WinnebagoInd.com

Cab Conveniences

Radio/Rearview Monitor System 6.2" LCD color touch screen monitor, Bluetooth[®], rear color camera, (available sideview color camera) Apple[®] and Android[®] compatible

Primera[®] cab seats w/two-position armrests, fixed lumbar support, and multi-adjustable slide/recline/swivel

3-point seat belts

Removable utility table

Chassis/house battery radio power switch

Power steering w/tilt wheel

Power mirrors w/defrost

Powered MCD blackout front shade

Driver/passenger MCD side window shades

Driver/passenger snap on vinyl closeout covers

Cruise control

Map light

Dash workstation w/USB and 12-volt powerpoint

Motor cover w/integrated snack tray

Instrument panel

OPTIONAL EQUIPMENT

Video camera system w/side view activation from turn signal

Interior

39" HDTV

Video Selection System

Amplified digital TV antenna system

Satellite system ready

Tinted windows

MCD blackout roller shades

OnePlace[®] systems monitor

Powered roof vent

LED lights

Vinyl flooring throughout

Entrance assist handle

Framed wall mirror (NA 31BE)

Sofa/bed (29VE, 32YE)

OPTIONAL EQUIPMENT

Powered StudioLoft™ bed (w/ladder)

Galley

Thermoform countertops w/decorative backsplash

2-door refrigerator/freezer (29VE)

Large, 2-door refrigerator/freezer (27PE, 31BE, 32YE)



Microwave oven w/touch controls

3-burner glass top range w/oven, flush with countertop

Pantry

Stainless steel double sink

Powered ventilator ceiling fan

OPTIONAL EQUIPMENT

Large 4-door refrigerator/freezer w/icemaker, cold water purification system (32YE)

Bath

Thermoform countertop w/decorative backsplash

Flexible showerhead

Textured glass shower door (NA 27PE)

Shower door w/retractable screen (27PE)

Skylight

Toilet w/foot pedal

Powered roof ventilator fan

Towel rack mounted inside of door

Towel bar(s) (NA 27PE)

Towel ring(s)

Robe hook(s)

Tissue holder

Linen cabinet (32YE)

Medicine cabinet

Mirror

Bedroom

King bed w/foam mattress and storage below (27PE, 32YE)

Queen bed w/foam mattress and storage below (29VE, 31BE)

Bedsread

Headboard

Bunk beds w/foam mattresses, mattress covers, and privacy curtain (31BE)

Powered ventilator fan (29VE, 31BE)

Room divider curtain (27PE)

OPTIONAL EQUIPMENT

2 DVD players w/10.1" LCD monitors and headphones (31BE bunk beds)

24" HDTV (29VE, 31BE, 32YE)

32" HDTV (27PE)

Exterior

Premium high-gloss sidewall skin

Automatic entrance door steps and screen door

Powered patio awning w/LED lighting

Entertainment center 32" HDTV w/remote and speakers (27PE, 31BE, 32YE)

Entertainment center 39" HDTV w/remote and speakers (29VE)

Front mud flaps

Porch light w/interior switch

Lighted storage compartments

Ladder

Entry assist handle

PetPal leash tie down

Heating & Cooling System

15,000 BTU air conditioner w/ChillGrille™

30,000 BTU low-profile furnace (NA 32YE)

35,000 BTU low-profile furnace (32YE)

Electrical System

AC/DC load center, 45-amp. converter/charger

30-amp. power cord

4,000-watt Cummins Onan® MicroQuiet™ gas generator

2 deep-cycle Marine/RV Group 24 batteries

Battery disconnect system (coach)

Automatic dual-battery charge control

Auxiliary start circuit

AC duplex receptacle

Cable TV input

Exterior antenna jack

DC receptacles

1,000-watt inverter (29VE, 31BE)

Plumbing System

Service Center colored labels, pressurized city water hookup w/diverter valve, drainage valves, 10' sewer hose

6-gallon LP water heater w/electronic ignition

Heated holding tank compartment

Permanent-mount LP tank w/gauge

On-demand water pump

TrueLevel™ holding tank monitoring system

Winterization Package water heater bypass valve and siphon tube

LPG accessory connection (patio) (29VE)

Water system filtration package

Holding tank flushing system (black tank only)

Safety

Child seat tether anchor (forward facing dinette seat)

LP, smoke, and carbon monoxide detectors

10 BC fire extinguisher

Ground fault interrupter

High-mount brake lamp

Warranty⁷

12-month/15,000-mile basic limited warranty⁸

36-month/36,000-mile limited warranty on structure⁸

10-year limited parts-and-labor warranty on fiberglass roof skin⁸

FOOTNOTES

- The height of each model is measured to the top of the tallest standard feature and is based on the curb weight of a typically equipped unit. The actual height of your vehicle may vary by several inches depending on chassis or equipment variations. Please contact your dealer for further information.
- Floorplans feature a wide-body design - over 96". In making your purchase decision, you should be aware that some states restrict access on some or all state roads to 96" in body width. Before making your purchase decision, you should confirm the road usage laws in the states of interest to you.
- The load capacity of your motorhome is designated by weight, not by volume, so you cannot necessarily use all available space when loading your motorhome.
- Capacities are based on measurements prior to tank installation. Slight capacity variations can result due to installation applications.
- Capacities shown are tank manufacturer's listed water capacity (W.C.). Actual filled LP capacity is 80% of listing due to overfilling prevention device on tank.
- Actual towing capacity is dependent on your particular loading and towing circumstances which includes the GVWR, GAWR, and GCWR as well as adequate trailer brakes. Please refer to the Operator's Manual of your vehicle for further towing information.
- See separate chassis warranty.
- See your dealer for complete warranty information.

NA Not Available

Not all items available in combination. See dealer for details.

Winnebago's® continuing program of product improvement makes specifications, equipment, model availability, and prices subject to change without notice. Published content reflects the most current product information at time of printing. Please consult your dealer for individual vehicle features and specifications.