

DISCOVER America | Family | Your Road



LanceCamper.com

Lance

Memories to Value for Generations



Lance Truck Campers. On the Road to Discovery.

There was a time in your life when you first looked up and discovered the stars. You might have been in the country. Or camping with your parents. Today, you're sharing the dream with your family, and building memories that will last for generations to come.

That's what's so special about camping – the outdoors and the RV Community. And that's why Lance is committed to building the best truck campers possible. When you are camping, Lance wants your trip to be one filled with outings, memorable photos and campfire songs.

That's why we engineer our products to stand up to years of real-world use. We want to be there with you on your journeys for years to come. Providing a quality, dependable home away from home.

Lance. We'll Take You There.

The Lance Difference

Since 1965 Lance has been building America's most popular truck campers. And today, many of them are still on the road – a true testament to the company's philosophy that quality comes first.

Based in California – the nation's most demanding state for building safe products – Lance manufactures from a state-of-the-art production facility – a 141,000 square foot, 22 acre campus – campus because Lance continues to research throughout the world for products and features that we can introduce to the RV community. Our creative team of engineers and designers are second-to-none.

Ideas born from this process include LanceLock™, the use of Azdel™, Lite-Ply™ and the removal of all mercury from the camper making for an eco-friendly, toxin-free RV. These are just a few of the examples of our advanced engineering that contributes to a quality product.

For the last decade, Lance has won the prestigious DSI Award (Dealer Satisfaction Index) for quality almost every year. We're also rated Best in Owner Satisfaction by our customers who are often repeat buyers and a source of referrals for new customers.



It doesn't stop there. To be a Lance truck camper dealer requires commitment. Every dealer goes through extensive training giving us a comprehensive authorized dealership network across the United States and Canada. Whether a first-time or repeat customer, in need of service or truck camper education – our network is always there for you.



4 Seasons

All Weather Package

Get away from it all with the Lance Four Seasons Certified option which includes: a water heater bypass and winterizing valve, insulated battery and propane compartments, insulated bed pad, insulated hatch covers, a dual stage 15/22K BTU furnace, dual panel windows and heated tanks.



Lance features an advanced ducting system for heat distribution. Unlike many other companies, Lance spends a lot of time engineering exacting routes so that you won't have hot or cold spots in your camper. Instead, the temperature is even throughout. The holding tanks are part of this system which is unique to Lance camper products.



Insulated Hatch Covers snap easily in place. These thick and dense insulating covers block the heat and cold that can come through the hatches. When snapped in place the load on the furnace or air conditioner is reduced and you will feel a noticeable difference in the even temperature throughout the RV.



A dual stage 15,000 / 22,000 BTU furnace not only keeps you warm in sub-freezing temperatures – Lance is the only camper to feature this quiet-running furnace that burns less fuel by automatically selecting how much heat is needed.

Go ahead. Get away. Far, far away.

Discover. Quality. Value.

Whichever model you choose, every Lance is engineered and built on the same assembly line by the same craftsmen. So you can expect quality and value in whatever model suits your needs and budget.

Take a look at the furniture grade cabinets, and the quality of the fit and finish. Lance also has a decorating team that designs color schemes that are both durable and timeless.

Moreover, what makes a Lance the most beautiful is the result of engineering you can't see. And that's why your Lances' good looks will take you down the road for many miles and years to come.



Model **855** in Hot Spot



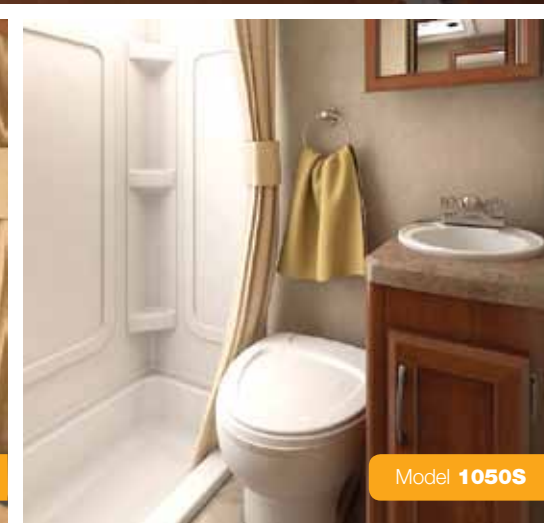
Model **992**



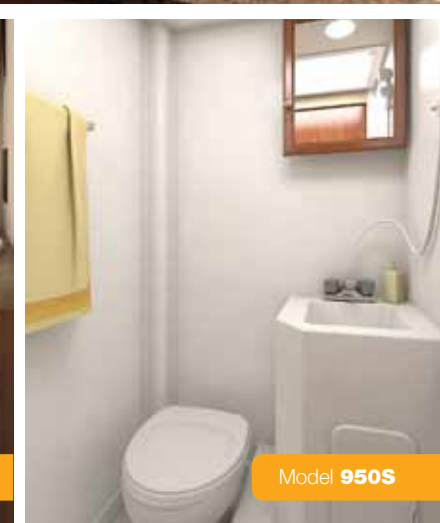
Model **1172** in Rain Forest



Model **1172**



Model **1050S**



Model **950S**

The Lance Look

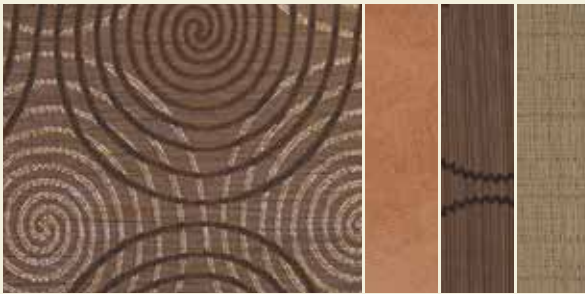
You've always known Lance for our engineering. Now you're going to be equally impressed by the décor of our products. We brought in an interior design team to create stunning Lance interiors. Our requirement was



that it had to be timeless, rugged and stylish. You'll find beautiful woods, wall treatments, and three fabric combinations that will make choosing one a challenge. So take your pick. Whatever your choice – it's 100% Lance – designed by campers, for campers.



Jet Stream



Hot Spot



Rain Forest

Eco Green

The Lance Standard for being Eco Green delivers the highest commitment to being Green possible.

The commitment began with visionary management having every element of the operation contribute to the green effort. To that end, Lance began by building a state-of-the-art 141,000 square foot campus that features "smart buildings" — buildings that utilize natural light, meter heating and air conditioning office-by-office and are tied into the electrical grid to participate in power savings programs. Even the lighting is intelligent.

Lance searches the globe for the best materials available. Lance products feature Azdel™ which replaces wood in the structure. It's also lighter and has exceptional insulation properties saving on heating and air conditioning needs. Lite-ply™ not only makes for superior wood work, it's farmed from renewable resources to avoid deforestation.

Every glue and cleaner Lance uses meets or exceeds the highest standards possible – and that's saying a lot where the standards in California are the nations' toughest.

In production, the engineering is so advanced that computers use CNC routers to get the most out of every sheet of product for maximum yield. Lance is continually improving our processes to reduce waste — and most of that is recycled.

But it doesn't stop there. Lance products have always been made better. Built since 1965, many Lance products are still in service which means they are having little impact on landfills – but rather continuing to perform their intended task...camping.



And all Lance RVs are mercury-free. Yes, it costs more to provide you with a safer RV and protect the environment – but at Lance – it's how we do business. Even our literature is printed on FSC (Forest Stewardship Council) approved paper which uses recycled products protecting our forests for generations to come.

At Lance, our Eco contribution is attuned to the breath of Mother Earth – conforming to nature rather than the other way around.

Environmentally Friendly from the Ground Up.

Selected Standard+Optional Features



Remote Control jacks and slide room control make set-up and loading a breeze



A Satellite Dish keeps you connected — choose the one that suits your needs



Slide-Out Pantry allows easy access to stored goods with adjustable baskets



Back-Up Camera is your electronic rear view mirror making your journey safer



Roof Rack System is frame mounted to carry more gear with optional components such as a storage pod



Bunk Bed with child restraint is a great space for added sleeping capacity or additional storage



Aerodynamic Nose Cap is made of TPO – the same material used for bumpers on automobiles. Its high gloss finish is resilient and resistant to the abuses of the road. And it's slick surface makes it easier to clean (Select Models)



Removable Clothes Rod make drying your towels and swimsuits easy



Exterior BBQ Hook-Up makes grilling fast, safe and easy at the campground



Heki Skylight is dual pane with sun-screen and privacy shade for ventilation or escape



Propane Generator for charging your batteries, running the A/C or other 110 volt devices



True 3-Way Refrigerator allows operation from 12 volt, propane or 110 volt sources



LED Lighting reduces power usage saving battery power and is eco friendly inside and out



Battery Separator lets your truck charge your camper batteries while driving



Black Tank Flush is a sprayer hookup for thoroughly cleaning your holding tank



iPod Connector allows your Apple™ devices to connect with your RV stereo system



Solar Power gives your batteries extended life when you're living off the grid



Skylights with retractable shades create an open, light and roomy feel



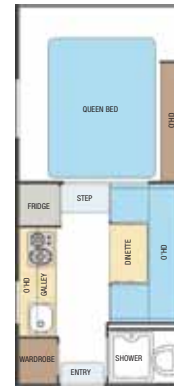
Rollout Storage Drawers pull out all the way creating cavernous storage



Bed-Maid makes bed making easy with dual sided comforters for all-weather comfort

Specifications+Standards+Options

	SHORT BED				LONG BED						
	825	855	855S	865	850	950S	992	1050S	1181	1172	1191
Floor Length	8'6"	8'11"	8'11"	8'7"	8'11"	9'11"	9' 11"	10'11"	11' 6"	11'11"	11'11"
Overall Length	16'6"	17'8"	17'8"	16'7"	17'8"	18'8"	18'6"	19'8"	20'1"	20'4"	20'4"
Exterior Height	7'6"	9'2"	9'5"	7'6"	9'2"	9'5"	9'5"	9'5"	9'5"	9'5"	9'5"
Width (Exterior)	86"	96"	96"	86"	96"	96"	96"	96"	96"	96"	96"
Height (Interior)	77"	76"	81"	77"	76"	81"	80"	81"	80"	80"	80"
Cabover Height	2'9"	3'2"	3'5"	2'9"	3'2"	3'5"	3'8"	3'5"	3'8"	3'8"	3'8"
Dry Weight	1726	2410	2650	1818	2360	2820	3290	3030	3520	3690	3505
Wet Weight	2044	2744	2984	2136	2694	3154	3750	3364	3971	4144	3898
Length	16'6"	17'8"	17'8"	16'7"	17'8"	18'8"	18'6"	19'8"	20'1"	20'4"	20'4"
CG Front	32"	36"	38"	34"	34"	47"	44"	48"	57"	60"	52"
CG Rear	46"	42"	40"	44"	62"	49"	52"	48"	39"	36"	44"
Fresh Water, Gallons	30	30	30	30	30	30	45	30	42	42	35
Grey Water, Gallons	11	20	20	14	20	20	40	27	30	35	35
Black Water, Gallons	14	25	25	13	13	25	30	22	35	35	35
Propane Capacity, Tanks/Gallons	1/5	2/5	2/5	1/5	2/5	2/5	2/5	2/5	2/7	2/7	2/7
Sleeping Capacity, Min/Opt Max.	4/5	5/5	5/5	5/5	5/5	4/5	4/5	4/4	4/5	5/6	4/5



Model 825



Model 855S



Model 865



Exterior	SHORT BED				LONG BED						
	825	855	855S	865	850	950S	992	1050S	1181	1172	1191
Laminated Fiberglass Bonded Exterior W/Azdel Substrate	•	•	•	•	•	•	•	•	•	•	•
1500 Lamulux Fiberglass	•	•	•	•	•	•	•	•	•	•	•
4000 Lamulux Fiberglass	•	•	•	•	•	•	•	•	•	•	•
Radius Wrapped Fiberglass Cab-Over Nose	•	•	•	•	•	•	•	•	•	•	•
One-Piece Formed TPO Cab-Over Front Cap	•	•	•	•	•	•	•	•	•	•	•
Acme Screw Camper Jacks	•	•	•	•	•	•	•	•	•	•	•
Ball Screw Camper Jacks	0	•	0	•	•	•	•	•	•	•	•
Electric Remote Ball Screw Camper Jacks	0	0	•	0	•	•	•	•	•	•	•
Swing-Out Jack Brackets	•	•	•	•	•	•	•	•	•	•	•
Aluminum Rear Bumper W/Step	•	•	•	•	•	•	•	•	•	•	•
Rotomolded Rear Bumper	•	•	•	•	•	•	•	•	•	•	•
4 Step Scissor Step	•	•	•	•	•	•	•	•	•	•	•
Double Step	•	•	•	•	•	•	•	•	•	•	•
Radius Torque Tinted Windows (Tempered)	•	•	•	•	•	•	•	•	•	•	•
Radius Tinted Insulated Dualpane Sliding Windows	0	0	0	0	0	0	0	0	0	0	0
Pass-Through Window (Removable)	0	0	0	0	0	0	•	•	•	•	•
Maggie Rack - Anodized	0	•	•	0	•	•	•	•	•	•	•
Phat Ladder - Anodized	0	•	•	0	•	•	•	•	•	•	•
Flip-Up Side Mounted Ladder	•	•	•	•	•	•	•	•	•	•	•
Roof Rack System	0	0	0	0	0	0	0	0	0	0	0
All exterior LED Lights	•	•	•	•	•	•	•	•	•	•	•
Radius Cornered Storage Compartment Doors	•	•	•	•	•	•	•	•	•	•	•
Radius Entry Door W/Window	•	•	•	•	•	•	•	•	•	•	•
Safety View Window	0	0	0	0	•	•	•	•	•	•	•
Egress Window in Cab-Over	•	•	•	•	•	•	•	•	•	•	•

	SHORT BED				LONG BED						
	825	855	855S	865	850	950S	992	1050S	1181	1172	1191
Roof Vent in Cab-Over	•	•	•	•	•	•	•	•	•	•	•
Exit Vent in Cab-Over	•	•	•	•	•	•	•	•	•	•	•
Heki Skylight Vent in Cab-Over	0	•	•	•	0	•	•	•	•	•	•
Skylight - Dual Pane Over Galley	•	•	•	•	•	•	•	•	•	•	•
Exterior Wash Station	•	•	•	•	•	•	•	•	•	•	•
Exterior Propane Connection	0	0	0	0	0	0	0	0	0	0	0
Awning Rear Roll-Out	0	0	0	0	0	0	0	0	0	0	0
Awning Slide-Out Cover	•	•	•	•	•	•	•	•	•	•	•
Rollout Awning, Optional Curbside, Length	8'	8'	8'	8'	8'	8'	8'	8'	11'	11'	11'
Swing-Out Entry Assist Handle	0	0	0	0	0	0	0	0	0	0	0

Construction/Insulation

One-Piece TPO Roof	•	•	•	•	•	•	•	•	•	•	•
Laminated, Insulated Floor, Cab-Over Bed and Roof	•	•	•	•	•	•	•	•	•	•	•
Block Foam Insulation Throughout	•	•	•	•	•	•	•	•	•	•	•
Insulated Battery and LP Compartments	0	0	0	0	0	0	0	0	0	0	0
Aluminum Framed Floor, Walls Cab-Over Bed and Roof	•	•	•	•	•	•	•	•	•	•	•
Azdel Interior Walls	•	•	•	•	•	•	•	•	•	•	•
LanceLock	•	•	•	•	•	•	•	•	•	•	•

Interior/Decor

Hardwood Framed Flat Panel Cabinet Doors W/Glazing	•	•	•	•	•	•	•	•	•	•	•
Hardwood Raised Panel O'Head Cabinet Doors W/Glazing	•	•	•	•	•	•	•	•	•	•	•
Fingertip Positive Catch Cabinet Hardware	•	•	•	•	•	•	•	•	•	•	•

	SHORT BED				LONG BED						
	825	855	855S	865	850	950S	992	1050S	1181	1172	1191
Lite-Ply Cabinet Construction	•	•	•	•	•	•	•	•	•	•	•
Valances W/Lambrequins	•	•	•	•	•	•	•	•	•	•	•
Mini-Blinds in Galley	•	•	•	•	•	•	•	•	•	•	•
Mini-Blinds in Cab-Over	•	•	•	•	•	•	•	•	•	•	•
Day/Night Shades W/Black-Out on Cab-Over Windows	•	•	•	•	•	•	•	•	•	•	•
Mini-Blinds in Dinette	•	•	•	•	•	•	•	•	•	•	•
Day/Night Shades in Dinette	•	•	•	•	•	•	•	•	•	•	•
Day/Nite Shades in Cab-Over/Dinette	0	0	0	0	0	0	0	0	0	0	0
Entry Door Pull Shade	0	0	0	0	0	0	0	0	0	0	0
Insulated Hatch Covers	0	0	0	0	0	0	0	0	0	0	0
Removable Carpet Kit	0	0	0	0	0	0	0	0	0	0	0

Galley/Appliances & Equipment

2-Burner Range	•	•	•	•	•	•	•	•	•	•	•
3-Burner High Output Range W/Oven and Cover - 16" Oven	•	•	•	•	•	•	•	•	•	•	•
3-Burner High Output Range W/Oven and Cover - 21" Oven	•	•	•	•	•	•	•	•	•	•	•
Microwave Convection	•	•	•	•	•	•	•	•	•	•	•
Microwave Oven	0	0	0	0	0	0	0	0	0	0	0
Refrigerator (Cu Ft) 3-Way	3	5	5	3	5	5	6	6	6	6	6
Upgraded Refrigerator Door Panels	•	•	•	•	•	•	•	•	•	•	•
Furnace BTU	12M	20M	20M	12M	20M	20M	20M	20M	20M	20M	20M
Furnace - Dual BTU 15/22	0	0	0	0	0	0	0	0	0	0	0
Propane Tank (#/Gal) (1 Gauge Only)	1/5	2/5	2/5	1/5	2/5	2/5	2/5	2/5	2/7	2/7	2/7
Range Hood W/Light and Fan	•	•	•	•	•	•	•	•	•	•	•
Laminate Galley Top	•	•	•	•	•	•	•	•	•	•	•



Model 850



Model 950S



Model 992



Model 1050S



Model 1181



Model 1172



Model 1191



	SHORT BED				LONG BED						
	825	855	855S	865	850	950S	992	1050S	1181	1172	1191
Molded Galley Top		•	•		•	•	•	•	•	•	•
Single Sink with High Spout	•			•							
Double Sink with Pull-Out Faucet		•	•		•	•	•	•	•	•	•
Pantry W/Adjustable Shelves		•	•		•	•	•	•	•	•	•
Slide-Out Pantry		0		0	0	0	0	0	0	0	0
Silverware Organizer	•	•	•	•	•	•	•	•	•	•	•
Sink Cover	0	0	0	0	0	0	0	0	0	0	0
Magazine and Spice Racks - Wood	0	0	0	0	0	0	0	0	0	0	0

Fresh and Waste Water Systems

Water Pump W/In-Line Filter	•	•	•	•	•	•	•	•	•	•	•
Water Heater Gas/Electric/DSI	•	•	•	•	•	•	•	•	•	•	•
Water Heater Bypass & Winterizing Valve	0	0	0	0	0	0	0	0	0	0	0
Enclosed, Insulated and Heated Holding Tanks	•	•	•	•	•	•	•	•	•	•	•

Bathroom

Black Tank Flush	•	•	•	•	•	•	•	•	•	•	•
Medicine Cabinet W/Mirror Door	•	•	•	•	•	•	•	•	•	•	•
Mirror on Bath Door	•	•	•	•	•	•	•	•	•	•	•
Skylight - Dual Pane	•	•	•	•	•	•	•	•	•	•	•
Ducted Heat	•	•	•	•	•	•	•	•	•	•	•
Removable Clothes Rod	0	0	0	0	0	0	0	0	0	0	0

Dinette

U-Shape Dinette in Deep Slide-Out						•		•	•		
Facing Dinette in Deep Slide-Out					•		•		•		

Cab-Over

Deluxe Queen Innerspring Mattress W/Pillow Top	•	•	•	•	•	•	•	•	•	•	•
Bedsprad	•	•	•	•	•	•	•	•	•	•	•
Headboard	•	•	•	•	•	•	•	•	•	•	•
Bed-Maid	0	0	0	0	0	0	0	0	0	0	0
LED Reading Lights	•	•	•	•	•	•	•	•	•	•	•
Open Wire Side Overhead Shelves	•	•	•	•	•	•	•	•	•	•	•
Privacy Curtain	•	•	•	•	•	•	•	•	•	•	•
Folding Privacy Door							0	0	0	0	0
Ducted Heat in Cab-Over	•	•	•	•	•	•	•	•	•	•	•
Insulated Bed Pad	0	0	0	0	0	0	0	0	0	0	0

Electrical

Systems Monitor Panel	•	•	•	•	•	•	•	•	•	•	•
Battery Condition Indicator - LED	•	•	•	•	•	•	•	•	•	•	•
Single Battery	•	•	•	•	•	•	•	•	•	•	•
Second Battery Compartment	0	0	0	0	0	0	•	0	•	•	•
Battery Disconnect - Manual Push/Pull	•	•	•	•	•	•	•	•	•	•	•
Battery Separator	0	0	0	0	0	0	0	0	0	0	0
LED Interior Lighting	•	•	•	•	•	•	•	•	•	•	•

	SHORT BED				LONG BED						
	825	855	855S	865	850	950S	992	1050S	1181	1172	1191
LED Wardrobe Light	0	0	0	0	0	0	0	0	0	0	0
12V Outlet in Dinette	0	0	0	0	0	0	0	0	0	0	0
Pre-Wired for Roof A/C & Wall Thermostat	•	•	•	•	•	•	•	•	•	•	•
A/C - Coleman 9 Low Profile Ceiling Control	0	0	0	0	0	0	0	0	0	0	0
A/C - Coleman 11 Wall Control		0	0		0	0	0	0	0	0	0
Pre-Wired for Fantastic Vent	•	•	•	•	•	•	•	•	•	•	•
Fantastic Roof Vent	0	0	0	0	0	0	0	0	0	0	0
Power Roof Vent in Bath	•	•	•	•	•	•	•	•	•	•	•
Pre-Wired for TV Ant/Sat Dish/Park Cable	•	•	•	•	•	•	•	•	•	•	•
TV Antenna HD	•	•	•	•	•	•	•	•	•	•	•
Satellite Dish	0	0	0	0	0	0	0	0	0	0	0
Satellite Dish Self Locating	0	0	0	0	0	0	0	0	0	0	0
AM/FM/DVD Stereo W/Int & Ext Speakers	•	•	•	•	•	•	•	•	•	•	•
TV 19" (12 Volt)	0	0	0	0	0	0	0	0		0	
TV 24" (12 Volt)									0	0	
Pre-Wired for Solar Panel	•	•	•	•	•	•	•	•	•	•	•
Solar Panel 95 Watt	0	0	0	0	0	0	0	0	0	0	0
LED Patio Light - Switched	•	•	•	•	•	•	•	•	•	•	•
LED Side Patio Lights	0	0	0	0	0	0	0	0	0	0	0
Docking Lights	0	0	0	0	0	0	0	0	0	0	0
Wireless Remote Slide-Out Control			•			•	•	•	•	•	•
Exterior 110V Patio Outlet	•	•	•	•	•	•	•	•	•	•	•
Generator Ready		•	•			•	•	•	•	•	•
Automatic Transfer Switch (Generator)		•	•			•	•	•	•	•	•
Generator 2500 Watt LPG (Onan)		0	0			0	0	0	0	0	0
Backup Camera W/Truck Cab Wireless Monitor	0	0	0	0	0	0	0	0	0	0	0

Lance Design and Construction. **The Legacy of Quality Begins Here...**

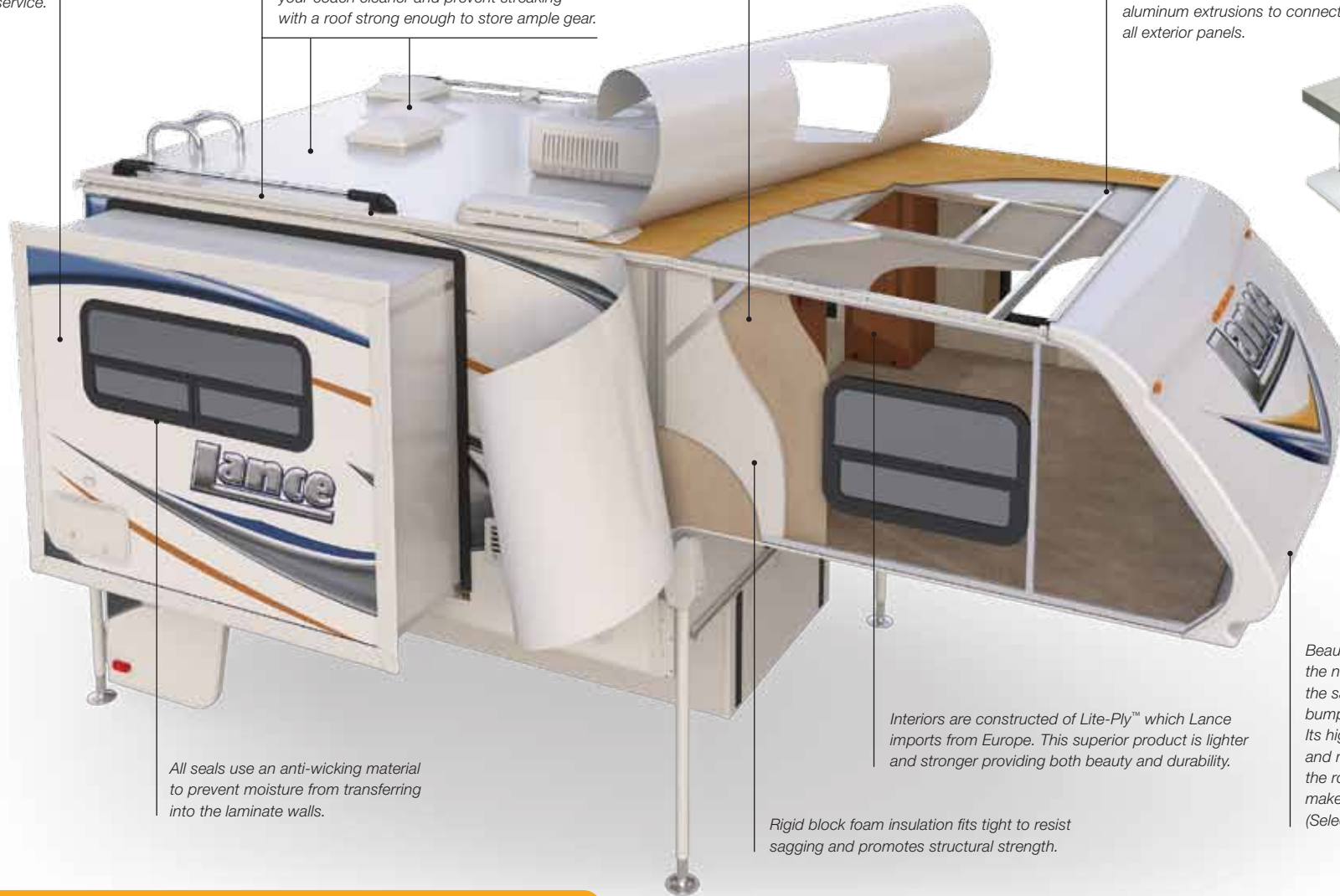
The slick fiberglass exterior walls are laminated under intense pressure with heat-setting adhesives for years of trouble-free service.

The roof is made of energy-star rated TPO with vents that clamp into place eliminating screws and potential leaks. Integrated rain gutters and drip spouts keep the sides of your coach cleaner and prevent streaking with a roof strong enough to store ample gear.

Lance uses more expensive Azdel™ in place of Luan wood virtually eliminating mold and mildew. It's also lighter and has a better "R" value for superior insulation.

With an aluminum framed superstructure, the entire camper fits together like a perfect puzzle.

"LanceLock™" features interlocking aluminum extrusions to connect all exterior panels.



All seals use an anti-wicking material to prevent moisture from transferring into the laminate walls.

Interiors are constructed of Lite-Ply™ which Lance imports from Europe. This superior product is lighter and stronger providing both beauty and durability.

Rigid block foam insulation fits tight to resist sagging and promotes structural strength.

Beautiful and aerodynamic, the nose cap is made of TPO, the same material used for bumpers on automobiles. Its high gloss finish is resilient and resistant to the abuses of the road. And its slick surface makes it easier to clean. (Select Models)

...and goes on the road with you.


3D advanced CAD engineering creates precise plans that run CNC machinery. The result is that every part is perfect every time.

Keeping it all together are stainless steel fasteners. Unlike our competitors, this expensive hardware resists corrosion making for a lasting investment.

Towing+

When towing behind a larger camper, extending the hitch rearward is necessary. Lance recommends the Reese Tow Beast Class V receiver hitch and hitch box extension. It replaces standard truck factory receivers to allow for greater towing capacities.*

**Always observe your trucks' tow ratings. Follow the advice of your Factory Authorized Lance Dealer.*

WEIGHT CARRYING/ TONGUE WEIGHT		WEIGHT DISTRIBUTION TONGUE WEIGHT		
TOW CAPACITIES (IN POUNDS) FOR THE LANCE MODEL REQUIRING ONLY A REESE TOW BEAST CLASS V RECEIVER HITCH				
850	12,000/1200	14,000/1400		
TOW CAPACITIES (IN POUNDS) FOR LANCE MODELS REQUIRING BOTH A REESE TOW BEAST CLASS V RECEIVER HITCH AND HITCH BOX EXTENSION				
Dealer modifications required. Consult your Factory Authorized Lance Dealer for professional technical advice and proper equipment installation. A universal heavy-duty 34" or 48" factory-stock Reese extension is cut down by a technical service professional to fit your particular application.			LENGTH OF CUT EXTENSION	
825	6000/600	8000/800	34" extension cut to 24"	
855				
855S				
865				
950S	5000/500	7500/750	48" extension cut to 41"	
992				
1050S				
1172				
1181				
1191				

Dealer+Installed+Support Equipment

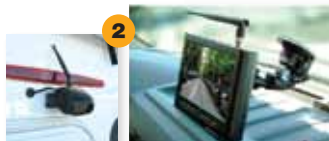
- 1 **Reese® Tow Beast™ Class V Hitch/Extension System** increases your towing capabilities over your trucks' factory-stock hitch
- 2 **Wireless Rear-View Camera/Microphone and 7-Inch In-Cab LCD Monitor** lets you see – and hear – what's behind you
- 3 **Frame-Mount Anchoring System and Front-Mounted Centering Guides** assist center alignment in the truck bed (Happijac® shown)
- 4 **Qwik-Load™ Front and Rear Turnbuckles** safely and securely attach and anchor the camper to your truck (Happijac® shown)
- 5 **Air Lift® Super Duty™ Air Springs** (“air bags”) increase stability and levels the rig by transferring rear axle load forward
- 6 **Rancho® RS-9000X™ Front and Rear Shocks** greatly improve ride in all weather and road conditions
- 7 **Air Lift Wireless Air™ In-Cab Remote Control** controls the air compressor and pressure for the air springs (“air bags”)
- 8 **Lance Custom Design™ Cab-Over Shocks** (“cab-over struts”) reduce the impact of up-and-down motion from irregular roads
- 9 **Rear-Mounted Centering Guides** assist in positioning your camper within the truck bed, and are available for most truck models

You have a choice of tie-down systems



Qwik-Load Turnbuckle Upgrades make anchoring your camper a snap (Happijac® shown)

Wireless Rear-View
camera/monitor
maximizes safety



Within Air Lift's Super Duty Air Springs ("air bags") are the Lance internal jounce bumpers – which gradually cushion the suspension of the air springs as they approach the end of their jounce travel



Truck+Camper Compatibility Guide

These are general guidelines to use when matching a Lance camper to your truck and assumes standard equipment on both the truck and camper. Whether any camper can be used with your truck is dependent on your truck configuration (2WD vs. 4WD, standard cab vs. extended cab, etc.) and its capacities for carrying and /or towing – how much optional equipment is added to the camper – what you tow – and the weight of passengers and all other items you carry in your truck and camper. And because we're unfamiliar with your specific truck and how you intend to use it, Lance makes no warranties or representation – express or implied – as to performance or reliability of your truck with a Lance camper. For professional guidance, always consult with your Factory Authorized Lance Dealer. They're trained in properly calculating truck/camper rigs.

IMPORT FULL-SIZED SHORT BEDS

Nissan® Titan™/Toyota® Tundra™ 6' short beds



Lance **825** Lance **865**
Short bed – Minimum six-foot bed

LIGHT-DUTY F-150/1500 SERIES

(or larger) 6' short beds



Lance **825** Lance **865**
Short bed – Minimum six-foot bed

HEAVY-DUTY F-250/2500 SERIES

(or larger) 6' short beds



Lance **825** Lance **865** Lance **855** Lance **855S**
Short bed – Minimum six-foot bed

HEAVY-DUTY F-250/2500 SERIES

(or larger) Single-rear-wheel 8' long beds



Lance **850** Lance **950S** Lance **1050S**

HEAVY-DUTY F-350/3500 SERIES

(or larger) Single-rear-wheel 8' long beds



Lance **850** Lance **950S** Lance **992**
Lance **1050S**

HEAVY-DUTY F-350/3500 SERIES

(or larger) Dual-rear-wheel 8' long beds



Lance **850** Lance **950S** Lance **992**
Lance **1050S** Lance **1172** Lance **1181**
Lance **1191**

2 YEAR STRUCTURAL LIMITED WARRANTY

In addition to the one (1) year Limited Warranty Period, Lance agrees to extend the warranty to two (2) years from the date of purchase (the "Warranty Period.") for the structural integrity of the Camper sidewalls, roof, floor, front wall, rear wall and chassis. This does not include electrical systems, plumbing, cabinets, or gas systems, and further does not include any systems, components or other items excluded under the warranty provided during the one (1) year Limited Warranty Period.

This extended warranty covers Lance Campers manufactured on or after April 1, 2013.

2014 LANCE TRUCK CAMPER BROCHURE ©2013 Lance Camper Manufacturing Corporation (LCMC). All rights reserved. Lance, the Lance logomark, the Lance logomark with chevron, America's Favorite Truck Camper, RV: Recreational Versatility, The Most Versatile RVs On The Planet, America's Favorite Campers - Earth's Most Versatile RVs, The Lance Look, Lance Custom Design, Bed-Maid, LanceLock, Living The Lance Life, SportsCamper and other exclusive Lance product names, marks or designations are trademarks, service marks or registered trademarks of LCMC. All other marks are property of their respective owners.

All product data, graphics and photography, illustrations and/or renderings in this book were as accurate as possible at press time. Subsequent refinements during the model year may be evident in the actual product. LCMC reserves the right to change prices, colors, materials, equipment and specifications without notice – as well as to add, modify or discontinue models shown in promotion materials and/or on its websites. All weights, fuel and liquid capacities are approximate and dimensions are nominal. It is that owner's sole responsibility to select the proper Lance camper model and support equipment appropriate to their truck without exceeding safe weight operating capacities. Your Factory Authorized Lance Dealer can advise you of the operating parameters for your particular configuration, and can confirm prices and product specifications material prior to making your purchase decision. See website for full warranty information. Brochure printed in the USA on FSM paper. 40M. 1013. Rev1.

