

# APEX<sup>TM</sup>

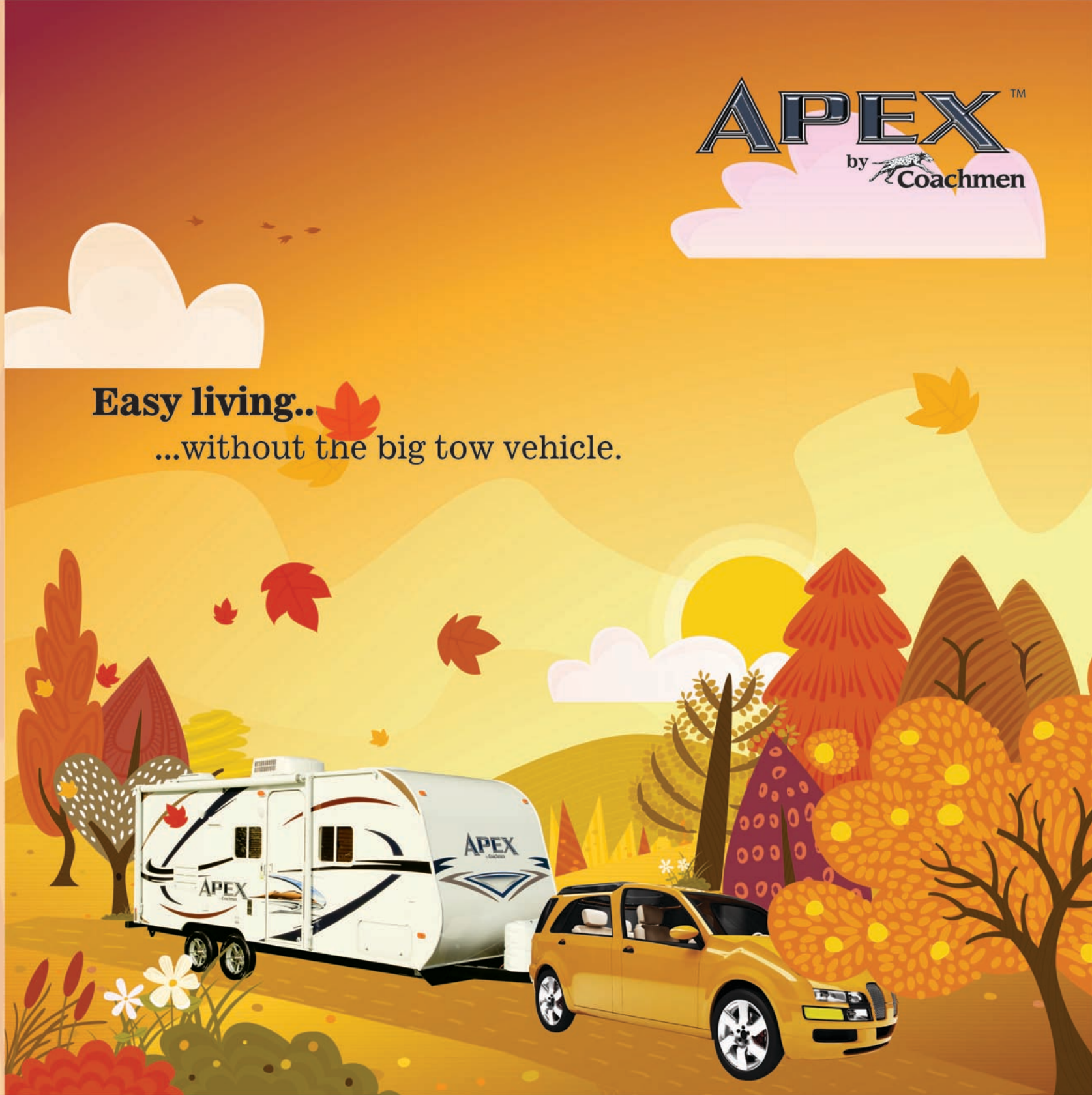
Ultra-Lightweight Travel Trailers

by  Coachmen

# APEX<sup>TM</sup>

by  Coachmen

**Easy living..**   
...without the big tow vehicle.







It's  
**Easy.**

Presenting the Coachmen Apex—a new line of truly ultra light travel trailers that scrimp on weight while being liberal on features. A step up from traditional travel trailers, the Apex offers fully laminated aluminum framed walls, floor and roof in order to eliminate additional unwanted weight. Using vacuum bond lamination makes the trailer amazingly durable while keeping it lighter and better insulated than traditional wooden frame trailers. The Apex design allows the trailer to be towed by smaller tow vehicles and optimize fuel efficiency.

**Because we care.**

Apex sidewall construction consists of Azdel SuperLite composite sheets in place of traditional wood panels. The Azdel product is man made and 50% lighter than traditional wood panels used for sidewall construction. Traditional panels are manufactured by harvested trees from natural rain forests. Here at Apex we are doing our part to preserve our environment by using the Azdel product. Apex is also a certified green product from TRA Certification, Inc. an independent, internationally accredited, third-party green certifier.

**Easy living...**  
...without the big tow vehicle.







It's **Lightweight Luxury.**

22QBS Pictured Above

The Apex interior offers a cross between traditional and contemporary. Two tone amish crafted glazed maple cabinets with well appointed oil rubbed bronze hardware positions the Apex at the top of the ultra-light market.



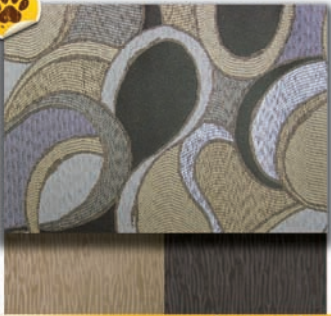


## Spacious.

22QBS Pictured

Although towability is a top priority in the design of Apex with floorplans ranging from 17' to 26', the spacious layout leads you to believe it is much larger. The open concept floorplans allow for plenty of elbow room when maneuvering around the entire unit.

## Decor Choices.



Amber Wave



Lagoon



Spyro Mocha



OPTIONAL DECORS





## Upgrades.

189FBS Pictured

The Apex features many upgrades that are more commonly found in residential surroundings. Countertops that feature high definition laminate material and laminated edges that eliminate the use of t-mold will ensure your purchase will last the test of time.

## Features. (189FBS & 22QBS)



Dinette



Sofa Bed



Reversible Cushions

EXCLUSIVE FLEXA-TURBO





## Lightweight.

17FB Pictured

The 17FB floorplan is extremely light-weight and can easily be towed by smaller vehicles. Weighing in at only 2,300 lbs. without options the 17FB is sure to get you out and traveling the country side in no time at all. Designed to maximize fuel efficiency the 17FB keeps camping affordable.

## Features.



Undermount Sink



Ball Bearing Drawer Guides



Laminated Roof & Floor



FEATURES THAT SET THE STANDARDS



## Standard Features.

### Interior...

- Mortise and tenon maple cabinet doors with almond and cherry glaze
- Oil-rubbed bronze hardware and hi-rise faucet
- High definition residential laminated countertops
- Molded fiberglass undermount sink
- Large double-door refrigerator (N/A 17FB/18BH)
- Large single door refrigerator (17FB/18BH only)
- 3-Burner Cooktop (N/A 17FB/18BH)
- 2-Burner cooktop (17FB/18BH only)
- Fire extinguisher
- Range hood with 12v exhaust and light
- Solid wood drawers
- Deluxe ball bearing drawer guides
- Hardwood interior door frames
- 19" LCD television (26BHS Only)
- Designer window treatments with night shades
- Armstrong linoleum flooring (10 yr. warranty)
- Down comforter with two pillow cases
- AM/FM/CD/Ipod stereo
- Large 20,000 BTU furnace
- Gas DSI water heater with bypass valve
- Demand water pump
- 55 amp power converter with battery charger
- Monitor panel
- Skylight in bathroom (26BHS, 22QBS and 189FBS)
- Power vent in bathroom
- Mirrored medicine cabinet
- LP, smoke and carbon monoxide detectors

### Exterior...

- Six sided laminated vacuum-bonded exterior
- Azdel SuperLite composite sidewalls
- Radius roof with extended rain gutters
- Aluminum framed walls, roof and floor
- Smooth fiberglass exterior skin
- Aluminum above floor slide system
- Super lube axle bearings
- Nitrogen filled radial tires with aluminum rims
- Insulated baggage doors with enclosed hinge
- Insulated radius entry door / clear screen door
- Fold away double entry step
- Four scissor-style stabilizer jacks
- Heavy-duty front tongue jack
- Two 20 lb. propane bottles
- Propane bottle cover (26BHS, 22QBS and 189FBS only)
- TV antenna with amplifier (26BHS, 22QBS and 189FBS only)
- Bronze tint safety glass windows
- Upgraded luster graphics
- Powder E-coated steel I-beam frame with full outriggers

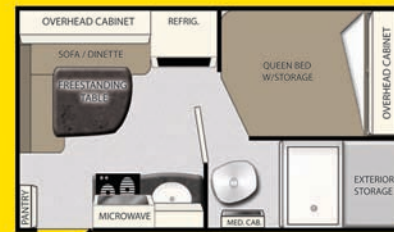
## Optional Features.

### Apex Value Package

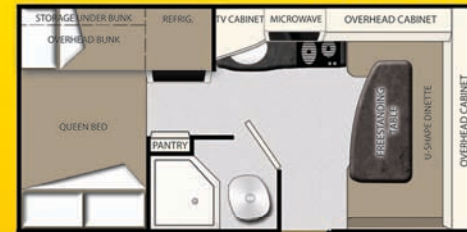
- 13.5 BTU Air Conditioner
- Exterior Awning
- Large microwave with carousel
- Spare tire and carrier

### Additional Options

- 19" LCD television
- Coleman HP grill stove with stand
- Fantastic vent
- Upgrade gas/elec water heater
- 17" black oven
- Exterior shower
- Electric tongue jack
- AM/FM/CD & DVD stereo



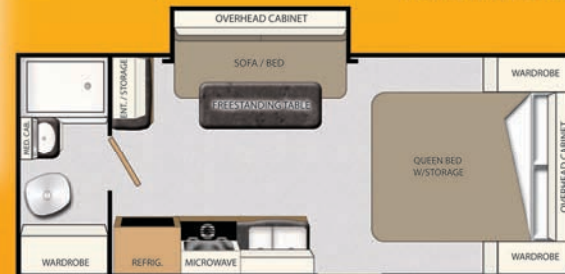
**17 FB**  
ULTRA-LITE TRAVEL TRAILER



**18 BH**  
ULTRA-LITE TRAVEL TRAILER



**189 FBS**  
ULTRA-LITE TRAVEL TRAILER



**22 QBS**  
ULTRA-LITE TRAVEL TRAILER



**26 BHS**  
ULTRA-LITE TRAVEL TRAILER

### 17FB

|                         |                |
|-------------------------|----------------|
| Unloaded Vehicle Weight | 2,395          |
| Carrying Capacity       | 1,405          |
| Gross Vehicle Weight    | 3,800          |
| Hitch Weight            | 345            |
| Tank Sizes              | 30 Gal         |
| Exterior Length         | 17' 6"         |
| Exterior Width          | 7' 6"          |
| Exterior Height         | 8' 6" + 14" AC |

### 18BH

|                         |                |
|-------------------------|----------------|
| Unloaded Vehicle Weight | TBD            |
| Carrying Capacity       | TBD            |
| Gross Vehicle Weight    | 3,800          |
| Hitch Weight            | TBD            |
| Tank Sizes              | 30 Gal         |
| Exterior Length         | 19' 5"         |
| Exterior Width          | 7' 6"          |
| Exterior Height         | 8' 6" + 14" AC |

### 189FBS

|                         |                |
|-------------------------|----------------|
| Unloaded Vehicle Weight | 3,146          |
| Carrying Capacity       | 2,780          |
| Gross Vehicle Weight    | 5,926          |
| Hitch Weight            | 326            |
| Tank Sizes              | 30 Gal         |
| Exterior Length         | 20' 3"         |
| Exterior Width          | 7' 6"          |
| Exterior Height         | 8' 6" + 14" AC |

### 22QBS

|                         |                |
|-------------------------|----------------|
| Unloaded Vehicle Weight | 3,427          |
| Carrying Capacity       | 3,573          |
| Gross Vehicle Weight    | 7,000          |
| Hitch Weight            | 450            |
| Tank Sizes              | 30 Gal         |
| Exterior Length         | 22' 5"         |
| Exterior Width          | 7' 6"          |
| Exterior Height         | 8' 6" + 14" AC |

### 26BHS

|                         |                |
|-------------------------|----------------|
| Unloaded Vehicle Weight | 4,250          |
| Carrying Capacity       | 3,250          |
| Gross Vehicle Weight    | 7,500          |
| Hitch Weight            | 500            |
| Tank Sizes              | 30 Gal         |
| Exterior Length         | 26' 9"         |
| Exterior Width          | 7' 6"          |
| Exterior Height         | 8' 6" + 14" AC |







## Benefits.

### Coachmen Club

Easy to enjoy. Seriously.

Purchase a new Coachmen RV and receive a FREE one-year membership in the Coachmen Owners' Association (C.O.A.). You'll enjoy exclusive discounts at campgrounds, theme parks and fuel stations. You'll also receive concierge service 24/7 so you can find and buy what you need, often at big discounts!

Other benefits include trip routing, vacation packages, event reservations, mail forwarding and our helpful owners magazine - *Easy RVing*. Plus annual camping events, a support network and services for first-time buyers. Take advantage of your C.O.A. membership today by calling 888-422-2582.

### Free Roadside Assistance

Coachmen provides one year of free Travel Easy emergency roadside assistance for those who buy a new Coachmen RV. Administered by Coach-Net, this service gives Coachmen owners 24/7 access to operational, technical and emergency road services, including towing, fuel delivery, jump starts, lockout service, tire changes, mobile mechanic and unlimited technical advice. So no matter where you go, we're ready to help!

Coachmen Recreational Vehicles Division of

423 N. Main St., P.O. Box 30  
Middlebury, IN 46540

800.353.7383 [www.CoachmenRV.com](http://www.CoachmenRV.com)



All specifications contained herein are based on the latest product information at time of printing. Coachmen reserves the right to make changes in colors, materials, equipment and specifications at any time without notice and assumes no responsibility for any errors in this brochure. PIP 041808

