

SYDNEY

by **Outback**



**MID-PROFILE
& SUPER-LITE**

FIFTH WHEELS



A



SYDNEY

by *Outback*

Experience the Sydney fifth wheel. Focused on aerodynamic and tasteful design and fashioned with interiors for the fresh look of today. Sydney offers you mid-profile and super-lite fifth wheels with high end quality at a mid-range price. Using the latest materials and technology for strength and lightness, Sydney combines durability, style and ease of towing. Compare Sydney's list of features and you will be amazed at the value Sydney delivers.

www.keystone-sydney.com



B



DECOR Options

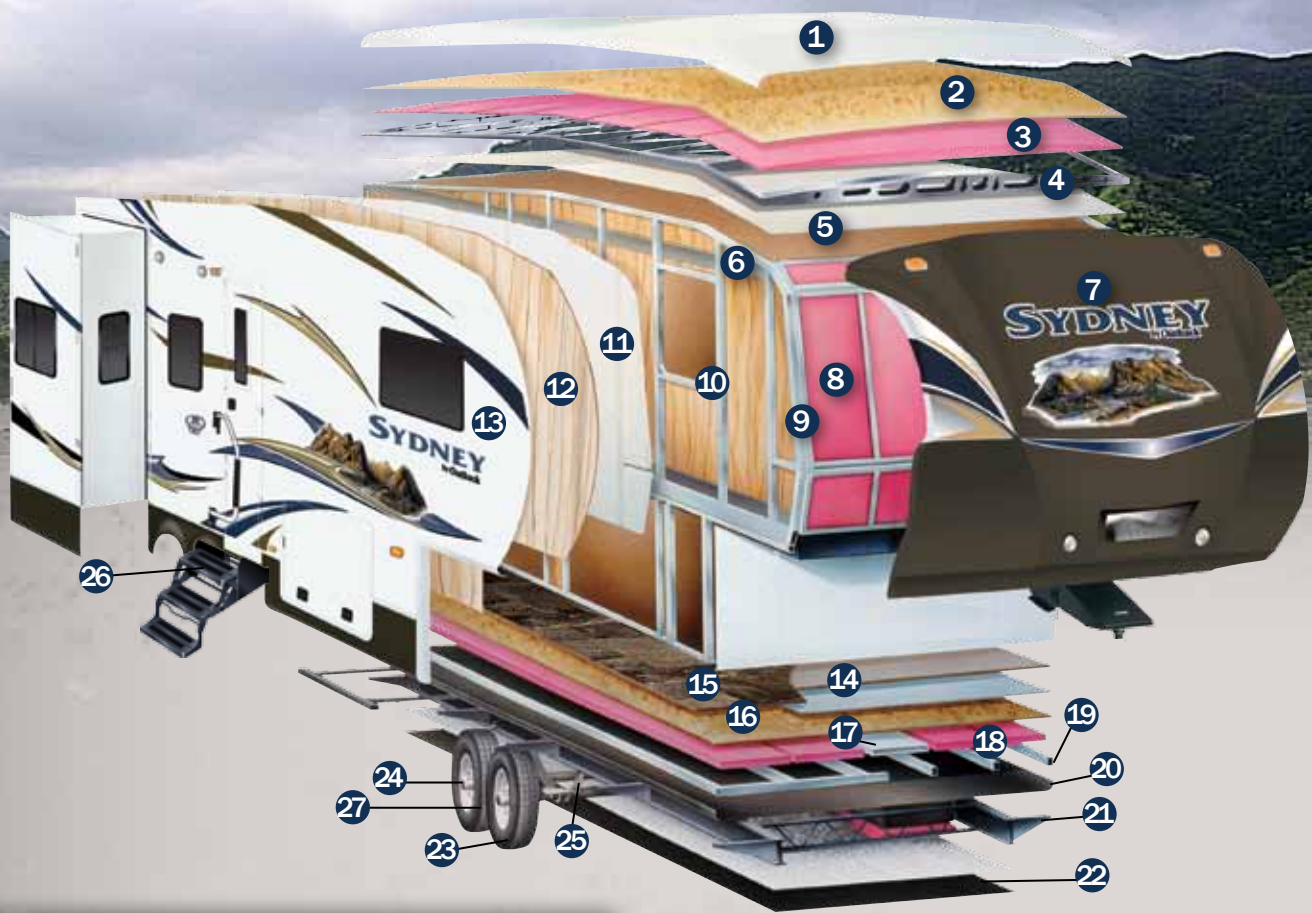
TRUFFLE

MOONLIGHT

TEAK

RUSSET





DURABLE Construction

ROOF

1. Seamless One-Piece EPDM Rubber Roof
2. 3/8" Fully Walkable Wood Decking*
3. R-14 Blanket Insulation
4. 5" Radius Galvanized Steel Roof Trusses
5. 1/8" Vinyl Protected Ceiling Panel

SIDEWALL

6. Metal Backing EGG Strips
7. Aerodynamic Radius High Gloss Front Fiberglass Cap w/ Hitch Vision
8. R-9 Fiberglass Insulation End Walls
9. 2" Box Welded Aluminum Side and End Walls
10. Corner Radius Window Inserts
11. R-9 Solid Block Foam Insulation
12. 1/8" Luan Wood Backing
13. Gel Coated Fiberglass Exterior

FLOOR

14. High Density Residential Carpet w/ Stain Resistance
15. Residential Grade Linoleum
16. Seamless 5/8" Treated Wood Floor Decking*
17. Residential In Floor Ducted Heat
18. R-14 Blanket In Floor Insulation*
19. 3" Welded Box Frame Aluminum Floor Joists, 13" on Center*
20. Darco Wrap Vapor Barrier

CHASSIS

21. 8" to 10" "Powder Coated" Steel I-beam Frame
22. One Piece, Polypropylene Enclosed and Heated Underbelly
23. 16" Radial Tires with 12" Electric Brakes (N/A Sydney Super-Lite)
24. EZ Lube Axles
25. Leaf Spring Suspension System
26. Entry Step Light
27. Equa-Flex Rubber Equalizer System

*Sydney Super-Lite utilizes laminated aluminum floors, 15" tires and 1 1/2" welded aluminum sidewalls.



www.keystone-sydney.com

SYDNEY

by Outback

IMPORTANT Features

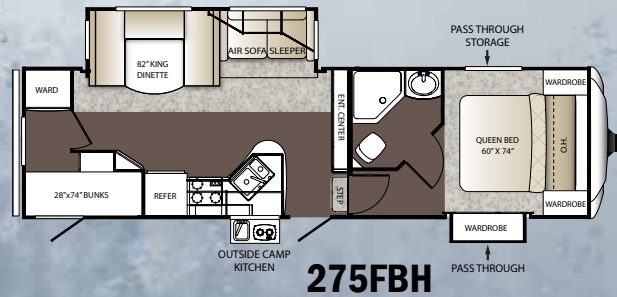
- A.** Oversized pass through storage gives you room for all your camping supplies. (325 FRE shown here)
- B.** Solid surface countertops provide a rich look and durability not found in many of the solid surface countertops used by competitors. (N/A Sydney Super-Lite)
- C.** Experience the convenience of full extension drawer glides on all kitchen and bedroom drawers.
- D.** Notice the 6' 2" ceiling height in the living room slides. The higher slide height means easier access and larger cabinets for storage. The glass mullion cabinet doors offer an elegant touch. (N/A Sydney Super-Lite)
- E.** Sydney's Utility Center encloses all exterior system controls in one convenient location. (N/A Sydney Super-Lite)
- F.** Sydney's black tank flush makes cleaning the tank simple!
- G.** Vaulted Ceiling in the Sydney fifth wheel now adds an additional 4" of interior height.
- H.** Underneath storage bins in pass through storage area. Perfect for tools, hoses, firewood, etc.
- I.** The Equa-Flex rubber equalizer system completes the task of keeping road shock where it belongs.
- J.** Sydney's heated underbelly and enclosed tanks and valves help extend the camping season, increase interior storage and provide better tow ability.
- K.** Turning radius is improved more than 30% with the most aerodynamic front fiberglass cap in the industry.



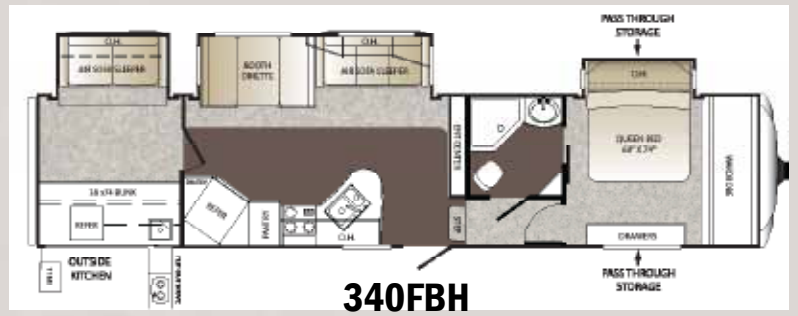
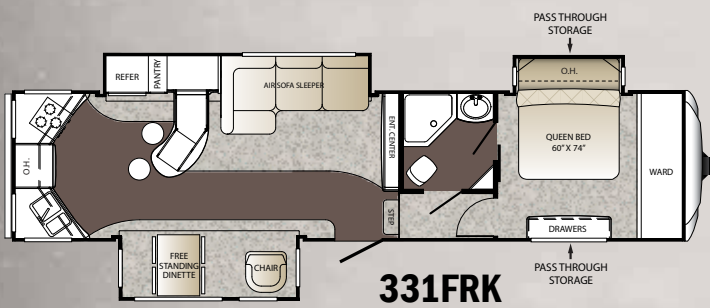
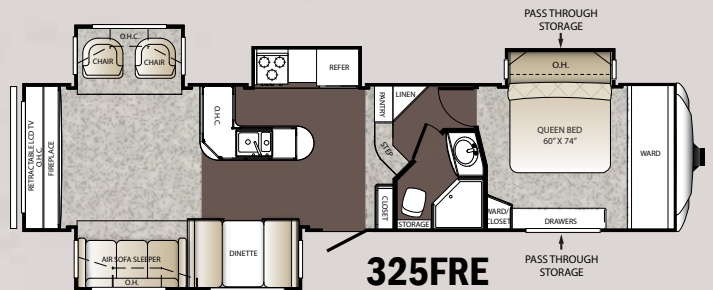
SYDNEY

by Outback

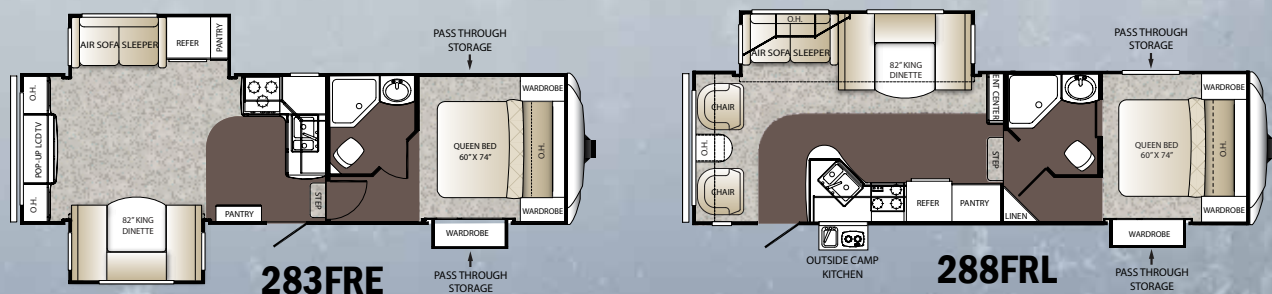
www.keystone-sydney.com



MID-PROFILE Floorplans



SUPER-LITE Floorplans



WEIGHTS and Measurements

	SUPER-LITE			MID-PROFILE			
MODEL NUMBER	275FBH	283FRE	288FRL	325FRE	331FRK	340FBH	349FRL
SHIPPING WEIGHT	7534	7516	7366	10305	TBD	10465	TBD
CARRYING CAPACITY	1966	1984	2134	1695	TBD	1758	TBD
HITCH WEIGHT	1450	1280	1480	1615	TBD	725	TBD
EXTERIOR LENGTH	31'	30'	30'	35' 11"	TBD	37' 8"	36' 11"
EXTERIOR WIDTH	96"	96"	96"	96"	TBD	96"	96"
EXT. HEIGHT - A/C TOP	12' 2"	12' 2"	12' 2"	12' 4"	TBD	12' 4"	12' 4"
AWNING	14'	10'	18'	11'	TBD	19'	11'
LP CAPACITY (LBS.)	60	60	60	60	TBD	60	60
FRESH WATER (GAL.)	43	43	43	50	TBD	50	50
WASTE WATER (GAL.)	30	30	30	40	TBD	40	40
GRAY WATER (GAL.)	60	30	60	80	TBD	80	80



VIEW INTERIOR SNAPSHOT PHOTOS AT
www.keystone-sydney.com

STANDARDS

M = MID-PROFILE

SL = SUPER-LITE

OPTIONS*

Living Area

Deluxe walnut and ash cabinetry	M	SL
Air bed sleeper sofa w/storage drawer	M	SL
Large panoramic view windows	M	SL
Pre-drilled and screwed cabinetry	M	SL
36" flush floor slides	M	SL
Access door under dinette	M	
King U-shaped dinette storage with two	M	SL
42" pull-out drawers	M	SL
Etched glass upper cabinets	M	SL
Custom designed box valances w/	M	SL
curtains	M	SL
Pleated shades	M	SL
Linoleum flooring	M	SL
Deep wood side drawers w/ ball bearing	M	SL
metal drawer glides	M	SL
6'2" extra tall slide out with 16" cabinets	M	SL
Water, soil, stain resistant fabrics	M	SL
Large overhead cabinets	M	SL
Decorative wall lights	M	SL
32" LCD HDTV flat screen	M	SL
(40" 328 FRK, 340FBH)		
Floor lights	M	SL
Central command center	M	SL
Ceiling fan	M	SL
Fireplace (340FBH, 330 FRL, 328 FRK,	M	
325 FRE, 322 FRL)		

Kitchen

Solid surface countertops	M	
60/40 deep sink w/ 3" drain	M	SL
Trash can storage	M	SL
High rise faucet	M	SL
Utensil trays	M	SL
Microwave	M	SL
3 burner range	M	SL
Oven	M	SL

Bedroom

Deluxe innerspring mattress	M	SL
TV hook-up	M	SL
Solid wood slider bedroom door	M	SL
His and her wall lights	M	SL
Deluxe wardrobe	M	SL
Residential bedspread w/ headboard	M	SL
Bedroom speakers	M	SL

Bathroom

Residential neo-angle shower	M	SL
Glass shower door	M	SL
Residential height vanity	M	SL
Porcelain foot flush toilet	M	SL
Deluxe medicine cabinet	M	SL

Appliances

AM/FM/CD stereo w/ DVD player	M	SL
and MP3 hook-up	M	SL
8 cu. ft. two door refrigerator	M	
6 cu. ft. two door refrigerator (N/A 283FRE)	M	SL
3 burner range	M	SL
6 gallon gas/electric DSI water heater	M	SL
16.2 gallon per hour quick recovery	M	SL
Water heater by-pass	M	SL
Wall mounted thermostat controlled A/C	M	SL
30,000 BTU furnace	M	SL

Exterior Standards

Black framed tinted jalousie safety	M	SL
glass windows	M	SL
Extra large baggage doors, 1" thick w/	M	SL
continuous extruded hinge and rubber D-seal	M	SL
Folding entry grab handle	M	SL
Extra wide 30" radius main entry door	M	
26" wide radius entry door	M	SL
Hitch light	M	SL
Hitch vision mirror w/ LED hitch lights	M	SL
Satellite prep	M	SL
Utility center	M	
Molded fiberglass front cap	M	SL
Extended drip caps, full length drip rails	M	SL
Security lights each side	M	SL
Heated enclosed underbelly	M	SL
(tanks and valves)	M	SL
Ladder	M	SL
Porch light	M	SL
Snap pins on front jacks	M	SL
Exterior 120V receptor	M	SL
Weather encapsulated trim	M	SL
Automotive style fender skirt	M	SL
Exterior speakers	M	SL
EZ lube axles	M	SL
Electric front jacks	M	SL
12V battery disconnect	M	SL
16" spare tire, carrier & cover	M	
15" spare tire, carrier & cover	M	SL
Outside camp kitchen (most models)	M	SL
Exterior quick connect LP hook-up	M	SL
(most models)		

Walls-Construction

Welded aluminum framed,	M	SL
laminated sidewalls		
Solid block foam R-9 insulation	M	SL

Roof

5" tapered galvanized steel trusses	M	
on 16" centers		
3/8" roof decking	M	SL
One piece EPDM rubber roof	M	SL
R-14 blanket insulation	M	SL

Floor

3" welded aluminum floor joist on	M	
13" centers		
Laminated, aluminum framed, double layer		SL
luan plywood		
R-11 insulation	M	SL

Chassis

Leaf spring equalizing suspension system	M	SL
1 1/2" Rear bike receiver hitch	M	SL
10" powder coated I-beam frame	M	
8" powder coated I-beam frame		SL
12" electric brakes	M	
10" electric brakes		SL
235 80R 16E radial tires	M	
225 75R 15D radial tires		SL
Aluminum wheels	M	SL
Equa-Flex rubber suspension system	M	SL

Utilities

Wired, prepped for 2nd A/C	M	
75-watt converter	M	
55-watt converter		SL
2-30lbs LP bottles w/ auto changeover	M	SL
TV antenna w/booster	M	SL
Cable TV hook-up	M	SL
50-amp shore power line w/ detachable cord	M	

Safety

LP leak detector	M	SL
Smoke detector	M	SL
Carbon monoxide detector	M	SL
Fire extinguisher	M	SL
Tinted safety glass windows	M	SL
Break-away switch	M	SL
Manual slide backup on all electric slide outs	M	SL

Designer Package	M	SL
Comfort Package	M	SL
Oven	M	SL
Air bed sleeper sofa	M	SL
32" LCD TV	M	SL
40" LCD TV (328FRK and 340FBH only)	M	
Large radius entry door	M	SL
RVIA	M	SL
6 gallon gas/electric DSI water heater	M	SL
Electric front jacks	M	SL
Carbon monoxide detector	M	SL
Free standing table and chairs	M	SL
Stabilizer jacks (2)	M	SL
Radial tires	M	SL
Aluminum wheels	M	SL
Security lights (2)	M	SL
Outside Camp Kitchen (most models)	M	SL
16" spare tire, carrier, and cover	M	
(N/A Super-Lites)		
50 amp service and prepped for 2nd A/C	M	

Sydney Comfort Package*

Roof air conditioner	M	SL
TV antenna w/ booster	M	SL
Electric patio awning	M	SL
AM/FM/CD stereo w/ DVD player	M	SL
and MP3 hook-up	M	SL
Folding entry handle	M	SL
Satellite prep	M	SL

Sydney Designer Package*

Wallpaper border	M	SL
Shower door	M	SL
Utensil tray	M	SL
Residential air bed sleeper sofa	M	SL
6 panel raised refrigerator panels	M	SL
Trash container	M	SL

* Denotes STD Build Options

SYDNEY
by Outback

www.keystone-sydney.com



www.Keystonerv.com

2642 Hackberry Drive
PO Box 2000
Goshen, IN 46527-2000
(574) 535-2100



Download the Tag app at
<http://gettag.mobi> and scan this Tag.

YOUR Local DEALER IS:

DECEMBER 2011



Go RVing
Life's A Trip

Product information is as accurate as possible at the date of publication of this brochure. Features, floor plans, and specifications are subject to change without notice. Please also consult Keystone's web site at keystonerv.com for more current product information and specifications. Tow Vehicle Disclaimer. CAUTION: Owners of Keystone recreational vehicles are solely responsible for the selection and proper use of tow vehicles. All customers should consult with a motor vehicle manufacturer or their dealer concerning the purchase and use of suitable tow vehicles for Keystone products. Keystone disclaims any liability or damages suffered as a result of the selection, operation, use or misuse of a tow vehicle. KEYSTONE'S LIMITED WARRANTY DOES NOT COVER DAMAGE TO THE RECREATIONAL VEHICLE OR THE TOW VEHICLE AS A RESULT OF THE SELECTION, OPERATION, USE OR MISUSE OF THE TOW VEHICLE. 12/2011