

CRUISER

CROSSROADS

Recreational Vehicles

CRUISER & CRUISER AIRE





CRUISER

3-7
PAGES

Our Standard is Loaded!

The longest running product line at CrossRoads RV, Cruiser is engineered for easy towing, luxury, and the real comforts of home.



CRUISER AIRE

8-11
PAGES

Family-Friendly Affordability

Cruiser Aire is designed for lightweight tow-ability. We incorporate high end features at a family-affordable price.

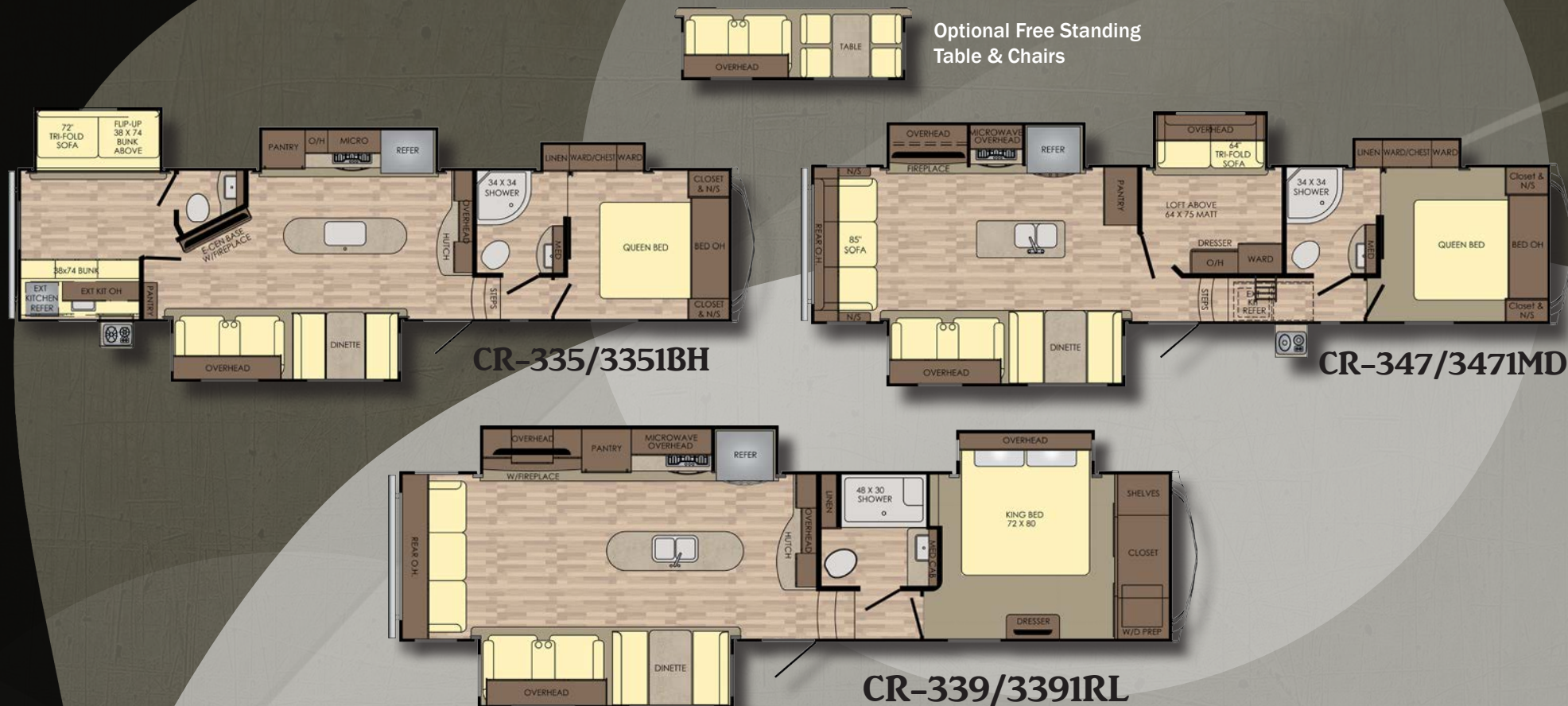


CRUISER



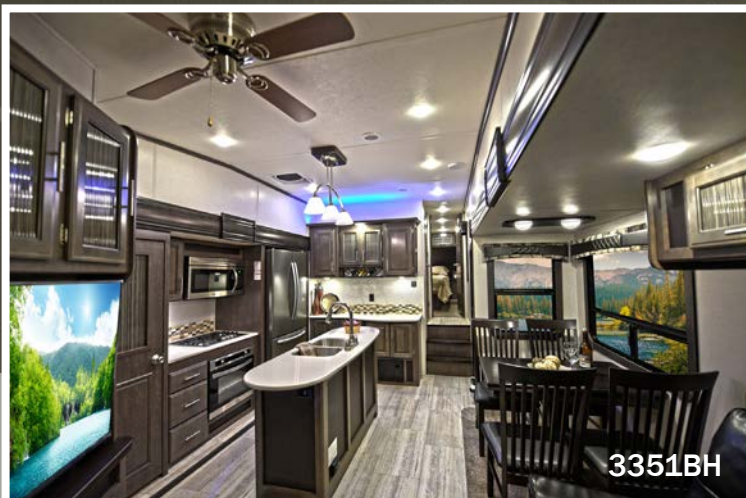
Cruiser 3351RL - Dogwood Decor

Our most popular selling Cruiser floorplan can be seen above.



MODEL	CR-335/3351BH	CR-347/3471MD	CR-339/3391RL
DRY WEIGHT	11584	TBD	10672
GVWR	14040	TBD	12305
CARRYING CAP.	2456	TBD	1633
HITCH WEIGHT	2040	TBD	1904
LENGTH	38' 2"	TBD	37' 3"
EXT. HEIGHT WITH A/C	12' 8"	TBD	12' 8"
FRESH WATER	64 Gal	TBD	64 Gal
BLACK WATER	82 Gal	TBD	42 Gal
GRAY WATER	84 Gal	TBD	84 Gal
TIRE SIZE	ST235/80R16 E	TBD	ST235/80R16 E

* Length is measured from center of pin to rear bumper.



3351BH



3391RL



3351BH

Crossroad RV's Cruiser is engineered for easy towing, luxury and the real comforts of home. While maintaining the utmost standards you will find in the industry today, the Cruiser name has been synonymous with unique floor plans, high quality and innovation.

All Cruiser floorplans range from 29 to 39 feet in length. Loaded with extras such as Roto-flex pin box, 1.5" receiver hitch, tan gel coat high gloss fiberglass, aerodynamic painted front cap, rolled roof edge, secure seal underbelly, secure slide seal system and so much more, Cruiser leaves no doubt that we produce the top-of-the-line product to meet your needs.

- Roller Shades
- Tri-Fold Sofa
- Theatre Seating
- Wood Window Trim

- Residential Fridge
- Stainless Appliances
- Solid Surface Countertops
- Hardwood Maple Cabinet Doors

- 48" Inch HDTV •
- 5,200 BTU Fireplace •
- Heats up to 1,000 Ft² •
- 3 Media Settings •

FAMILY-FRIENDLY AFFORDABILITY



CRUISER



DECOR OPTIONS



SULLIVAN



DOGWOOD



MONROE





CR-3351BH BUNKHOUSE



SLAM LATCH DOORS AND SOLAR PREP



CR-3351BH BEDROOM



PAINTED FRONT CAP W/ CLEAR COAT

STANDARDS EXTERIOR

- High Gloss Laminated Sidewalls
- 5-Sided Alumina Frame Construction
- Aerodynamic Painted Front Cap w/ LED Accent Lights
- One-piece Seamless Super Flex Roof
- Total Truss Roof System
- 30" Friction Hinge Main Entry Door
- Extendable Grab Handle at Main Entry
- EZ Lube Axles
- Trail Air Equa-flex Suspension
- Trail Air Roto Flex Pin Box
- 16" "E" Rated Nitrogen Filled Radial Tires
- Galvanized Wheel Well
- Stamped Steel Outside Kitchen (VBM)
- Super-Stor Pass-through Basement Storage
- Magnetic Slam Latch Pass-through Baggage Doors
- Cable Prep and Electric Outlet in Basement
- Manual Slide Override Extends Through Frame for Easy Access
- Scare Light
- Exterior Marine Grade Speakers (2)
- Dual Battery Capacity
- Battery Disconnect
- Heated and Enclosed Gate Valves
- Secure Seal Underbelly
- Forced heat to Underbelly
- Quick Recovery 10gal G/E DSI Water Heater (19.7 gal/hr)
- Outside Shower
- Exterior Utility Center
- 50amp Detachable Power Service
- 2nd AC Prep
- Cable/SAT Prep
- Digital TV Antenna
- 4/6 Point Ground Control Leveling
- Roof Ladder

STANDARD INTERIOR

- Lumber Core Screwed Stile Cabinetry Construction
- Raised Panel Cabinetry Throughout
- Roller Shades
- 70-lb Steel Ball Bearing Guides, Full Extension

- Solid Wood Drawer Construction
- Booth Dinette
- Knife Rack
- 18 ft³ Residential Refrigerator
- Solid Surface Countertops
- 48" LED TV
- 30" Built In Micro Hood
- Adjustable Pantry Shelving (VBM)
- High Rise Pull Out Kitchen Faucet
- Under Mount Stainless Steel Kitchen Sink w/ Cover
- Maximum Lino
- Tri-Fold Hide A Bed Sofa
- Deluxe Theater Seating (VBM)
- Ceiling Fan
- Fireplace w/ Remote (5,200 BTU)
- OHC Above Sofa/Chairs In slide Out
- Stone Backsplash
- Water Heater By-pass Kit
- EZ Winterization Kit
- Charging Station
- Backlit Command Center for Switches
- 65amp Converter w/ Distribution Center
- Bath Skylight
- Power Roof Vent In Bathroom
- Built Medicine Cabinet
- Glass Tub/Shower Enclosure
- Full Trunk Under Bed Storage
- Plywood Bed Base w/ Strut Assist
- Spacious Bedroom Closets
- Washer/Dryer Prep (VBM)
- Fire Extinguisher
- 15,000 BTU A/C

SELECT PACKAGE MANDATORY

- 12v Multi-media Sound System w/Bluetooth
- Backup Camera Prep
- Solar Prep
- Enclosed Underbelly
- Aluminum Lighted Entry Step
- Friction Hinge Entrance Doors
- 30# LP Tanks
- Black Tank Flush
- Stainless Steel Appliance Package
- 13,500 BTU A/C
- Smoke Detector
- LP Detector
- Aluminum Wheels

- Electric Awning w/ LED Lights
- Decorative Bedspread
- Queen Mattress (60"x80")
- King Mattress (VBM)
- I-Cool Mattress
- LED Lights Throughout Interior

OPTIONS

- 2nd AC In Bedroom (Lo-profile 13.5)
- Free Standing Table & Chairs

POLARTEC COMPONENTS

- Sidewall - Block Foam Insulation + Double Layer Luan
- Roof - Wood Rafters + R-7 Spun Insulation + Radiant Foil
- Floor System - R-7 Spun Insulation + Radiant Foil + ABS Enclosure
- Front Wall - R-7 Spun Insulation
- Rear Wall - R-7 Spun Insulation
- Slide Floor
- Slide End Walls - R-7 Spun Insulation
- Above Open Pin Box
- Gate Valves - Enclosed and Heated
- Underbelly - Forced Heat to Tanks
- 35,000 BTU Furnace - Largest in its Class

TOTAL TRUSS ROOF SYSTEM

- 4 1/2" Crowned Wood Truss 16" On Center
- 2"x2" Vertical Wood Stud Supports to Maximize Load Capacity
- Oversized Nail Plates for Greater Stability
- 3/8" Roof Decking (Secured in Place w/ Screws)
- Radius Roof Edge
- Fully Walkable

CRUISER

CRUISER AIRE



Cruiser Aire 29SI

Above is the main living and kitchen area in
our best selling Cruiser Aire floorplan.



29SI - Monroe Decor



28RL - Dogwood Decor



29SI - Monroe Decor

The Cruiser Aire combines affordability, tow-ability and high quality. Although the Cruiser Aire was designed solely as a super-light-weight brand for Crossroads RV, we manufacture floor plans of ALL sizes that are well-constructed and affordable!

With convenience at the top of our list, we incorporate high-end features such as high-gloss fiberglass, slam latch pass-through baggage doors with magnetic catches, electric awnings with LED light strip, Total Truss Roof System with 3/8" walkable roof decking, secure seal underbelly and so much more to make the exterior suitable for all of your needs.

Inside the unit you will find the same standards of convenience such as a 30,000 BTU furnace, 17.8 GPH water heater, 7" deep stainless steel sink with high rise faucet and so much more.

- Night Shades
- Tri-Fold Sofa
- Wood Window Trim

- Theatre Seating
- Solid Surface Countertops
- Hardwood Maple Cabinet Doors

FAMILY-FRIENDLY AFFORDABILITY



28RL

CRUISER
AIRE

CRUISER AIRE



28RL



28RL - 29BH - 29SI

DECOR OPTIONS



SULLIVAN



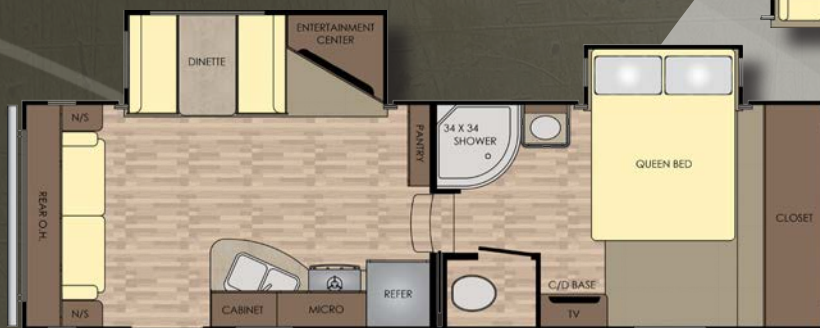
DOGWOOD



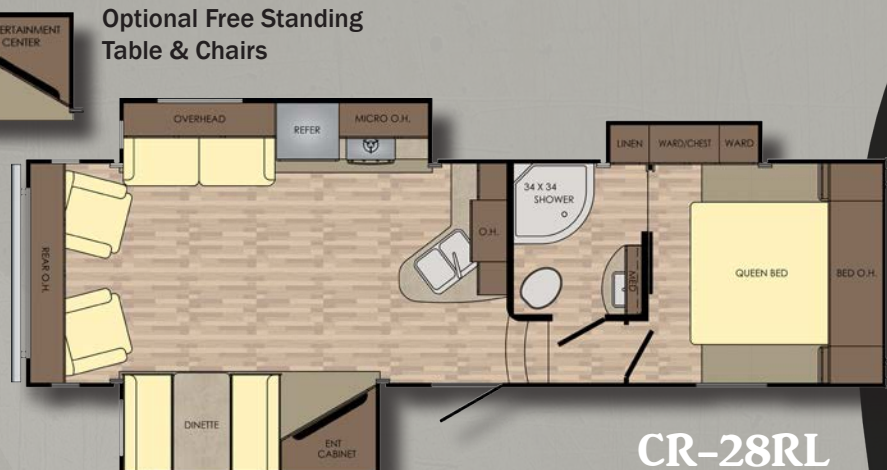
MONROE



29SI



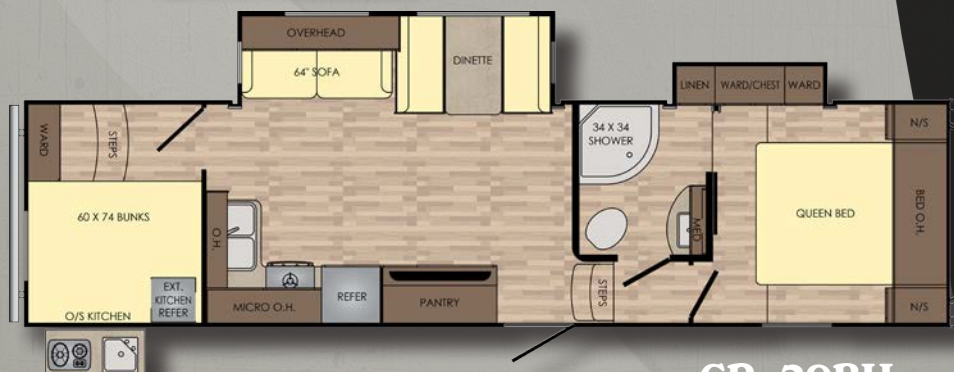
CR-25RL



CR-28RL



CR-29SI



CR-29BH



Optional Free Standing
Table & Chairs

MODEL	CR-25RL	CR-28RL	CR-29SI	CR-29BH
DRY WEIGHT	7138	7980	8424	TBD
GVWR	10120	10205	10330	TBD
CARRYING CAP.	2982	2225	1906	TBD
HITCH WEIGHT	1322	1406	1530	TBD
LENGTH	28' 8"	30' 11"	32' 8"	TBD
EXT. HEIGHT WITH A/C	12' 1"	12' 1"	12' 1"	TBD
FRESH WATER	60 Gal	60 Gal	60 Gal	TBD
BLACK WATER	44 Gal	44 Gal	44 Gal	TBD
GRAY WATER	44 Gal	44 Gal	88 Gal	TBD
TIRE SIZE	ST225/75R15 D	ST225/75R15 D	ST225/75R15 D	TBD

* Length is measured from center of pin to rear bumper.



CrossRoads RV offers a one year limited warranty on all products from the date of purchase. This applies to units sold in the United States and Canada by authorized CrossRoads Dealers.



www.crossroadsrv.com
1140 W. Lake St Topeka, IN 46571
(260) 593 - 3850

DISCLAIMER: Product information is as accurate as possible as of the date of publication of this brochure. All features, floor plans, and specifications in this brochure are subject to change without notice. Please also consult CrossRoads' web site at www.crossroadsrv.com for more current product information and specifications. Tow Vehicle Disclaimer. CAUTION: Owners of CrossRoads recreational vehicles are solely responsible for the selection and proper use of tow vehicles. All customers should consult with a motor vehicle manufacturer or their dealer concerning the purchase and use of suitable tow vehicles for CrossRoads products. CrossRoads disclaims any liability or damages suffered as a result of the selection, operation, use or misuse of a tow vehicle. CROSSROADS' LIMITED WARRANTY DOES NOT COVER DAMAGE TO THE RECREATIONAL VEHICLE OR THE TOW VEHICLE AS A RESULT OF THE SELECTION, OPERATION, USE OR MISUSE OF THE TOW VEHICLE. REFERENCE CROSSROADS RV COMPANY OWNERS MANUAL FOR LIMITED WARRANTY DETAILS. *Length is defined as the distance from the centerline of hitch pin/coupler to rear bumper of trailer.

STANDARDS EXTERIOR

- High Gloss Laminated Sidewalls
- Painted Front Cap w/ Clear Shield
- Total Truss Roof System
- Alumina-Frame Construction (Sidewalls, Front Wall & Floor)
- Aerodynamic Front Cap
- One-Piece Seamless Super Flex w/ 12 Yr Warranty
- 30" Friction Hinge Entry Door
- Extendable Grab Handle at Main Entry
- EZ Lube Axles
- Nitrogen Filled Radial Tires
- Galvanized Wheel Well
- Outside Kitchen w/ LED light (VBM)
- Super-stor Pass Through basement storage
- Magnetic Slam Latch Baggage Doors
- Exterior Marine Grade Speakers
- Secure Seal Heated Underbelly
- Black Tank Flush
- Quick Recovery 6 Gal G/E DSI Water Heater (17.8 gal/hr)
- Outside Shower
- 50 Amp Service w/ 2nd A/C Prep
- Cable/SAT Prep
- Digital TV Antenna
- Stabilizer Jacks
- Roof Ladder
- Electric Rear Stabilizer Jacks
- Spring Loaded Pull Pins on Front Power Jacks
- Battery Disconnect Switch
- Dark Tinted Safety Glass Windows

STANDARD INTERIOR

- Lumber Core Screwed Stile Cabinetry Construction
- 70lb Steel Ball Bearing Guides, Full Extension
- Solid Wood Drawer Construction
- Raised Maple Panel Cabinetry
- Decorative Dinette Light
- 40" Booth Dinette (VBM)
- Dinette Pedestal Table
- Decorative Back Splash
- Knife Rack
- Self Igniting Oven w/ 3-Burner Cook Top
- 8 ft³ Stainless Steel Refrigerator
- Pantry (Most models)
- Solid Surface Kitchen Countertops
- Stainless Steel Appliances
- High Rise Kitchen Faucet
- 7" Deep Stainless Steel Kitchen

- Sink w/ Cover
- Maximum Lino
- Tri-fold Hide a Bed Sofa
- Swivel Rocker Chairs (VBM)
- Over Head Cabinet Above Sofa/Chairs in Slide Out
- Decorative Slide Fascias
- Water Heater Bypass Kit
- EZ Winterization Kit
- 55 Amp Converter with Distribution Center
- 12-volt Bath Power Vent
- Bath Skylight
- Built Medicine Cabinet
- Glass Shower Enclosure
- Porcelain Toilet w/ Foot Flush
- Full Trunk Under Bed Storage
- Plywood Bed Board w/ Strut Assist
- Spacious Bedroom Closets
- Fire Extinguisher
- 12 Volt Charging Station
- 30,000 BTU Furnace
- Spare Tire

TOTAL TRUSS ROOF SYSTEM

- 4 1/2" Crowned Wood Truss 16" on Center
- 2"x2" Vertical Wood Stud Supports to Maximize Load Capacity
- Oversized Nail Plates/Greater Stability
- 3/8" Roof Decking (Secured in Place with Screws)
- Fully Walkable Roof

OPTIONS

- 39" LED TV
- 15K A/C IPO 13.5K
- 2nd A/C in Bedroom
- 5100 BTU Fireplace
- Free Standing Table & Chairs

SELECT PACKAGE MANDATORY

- Aluminum Wheels
- Black Tank Flush
- Power Awning w/ LED Lights
- Enclosed Underbelly
- Aluminum Entry Step
- Friction Hinge Entrance Doors
- Glass Top Flush Mount Range Cover
- Night Shades
- 60x80 Queen mattress
- LED Interior Lights
- Smoke Detector
- LP Detector
- 13,500 BTU A/C
- Decorative Bedspread
- 30# LP Bottles

- AM/FM/DVD/CD Stereo w/ Bluetooth
- Backup Camera Prep
- Solar Prep

THERMOTEC COMPONENTS

- Sidewall - Block Foam Insulation
- Roof - Wood Rafters + R-7 Spun Insulation + Radiant Foil
- Floor System - R-7 Spun Insulation + ABS Enclosure
- Front Wall - R-7 Spun Insulation
- Rear Wall - R-7 Spun Insulation
- Slide End Walls - R-7 Spun Insulation
- Slide Roof - R-7 Spun Insulation
- Above Open Pin Box
- ABS Enclosed Secure Seal Heated Underbelly
- Furnace - 30,000 BTU

