

MONTANA

HIGH COUNTRY



WARRANTY FOR
FULL TIME RVING*

B U I L T B Y
E X P E R I E N C E



BUILDING A LEGACY

MONTANA
HIGH COUNTRY



When Cole Davis founded Keystone RV in 1996 his vision was clear: Build a quality RV loaded with features priced thousands less than other RVs on the market. To accomplish his goal, Cole built a strong team, focused on keeping overhead low, and empowered employees closest to the customer to make decisions. Within a few short months after opening the doors, Keystone produced its very first camper. Delivering big on quality, features and value, the public fell in love and a star was born.

As customers appetite skyrocketed, new Keystone models were added to satisfy growing customer demand. Along with this tremendous growth came the need for expanded production. To meet this need, more manufacturing plants were built and staffed. By the beginning of 2000, Keystone was leading the industry in fifth wheel and trailer sales. Today, Keystone RV Company has grown to encompass over 1 million square feet of manufacturing space with facilities in Goshen, Indiana and Pendleton, Oregon. While Keystone is no longer the small "start up" we once were, our mission has remained true to Cole's vision—"Do the job right and make sure we deliver a quality product every time."

THE COMPLETE CHOICE

FOR MORE INFORMATION ON KEYSTONE RV VISIT
WWW.BIT.LY/10A0OLK

SCAN ME

FOR MORE INFORMATION ON KEYSTONE RV COMPANY



MONTANA HIGH COUNTRY

Montana was created in 1998 for the sole purpose of providing a high-quality, luxury fifth wheel at an affordable price. By listening to customers, Montana delivered a fifth wheel to lead the industry in quality, style, innovation and value. Experienced RVers responded to the painstaking details crafted into every square inch of every floor plan as Montana quickly revolutionized the fifth wheel market in the late 90's.

In 2001, Montana finished the year as the #1 selling fifth wheel brand in the United States for the first time and has remained the #1 selling luxury fifth wheel for 15 consecutive years.

Today, Montana continues to lead the industry in creating spacious, highly functional, durable and dependable luxury fifth wheels. Every Montana is crafted with the confidence that comes from 16 years of quality fifth wheel building expertise. We continue to raise both structural standards and customer expectations through our cutting-edge technology and handcrafted skills that put our manufacturing in a class by itself.

The future promises new and exciting developments to enhance the ultimate RVing experience that only a Montana can deliver. With over 90,000 Montana fifth wheels produced, and the most repeat buyers of any towable brand in the industry, the Montana legacy continues to grow larger and larger year after year.

TRUSTED RESULTS



#1



LUXURY FIFTH WHEEL 15 CONSECUTIVE YEARS

RVDA QUALITY CIRCLE AWARD RECIPIENT



WALL CONSTRUCTION (R-10)

1. 30" Wide x 78" Tall Entry Door with Window
2. Frameless Deep Tint Safety Glass Windows with UV Inhibitor
3. Adjustable Electric Patio Awning
4. Automotive Finish High Gloss Fiberglass Exterior Walls, Baggage Doors & Entry Doors
5. High Density Block Foam Insulation
6. 2" Welded Aluminum Wall Studs
7. Electro-Galvanized Sheet Metal Backing Strips
8. Max Turn Fiberglass Front Cap with Improved Turning Radius, Dual LED Light Bars & Hitch Vision Mirror

ROOF CONSTRUCTION (R-38)

9. One-Piece TPO Roof with 12-year Warranty
10. Aluminum Radius Roof Corner Molding Wrap
11. 3/8" Fully Walkable Roof Decking
12. Reflective Radiant Technology Insulation
13. Fiberglass Insulation
14. 5" Arched Roof Rafters
15. Quiet Cool Air Conditioning System

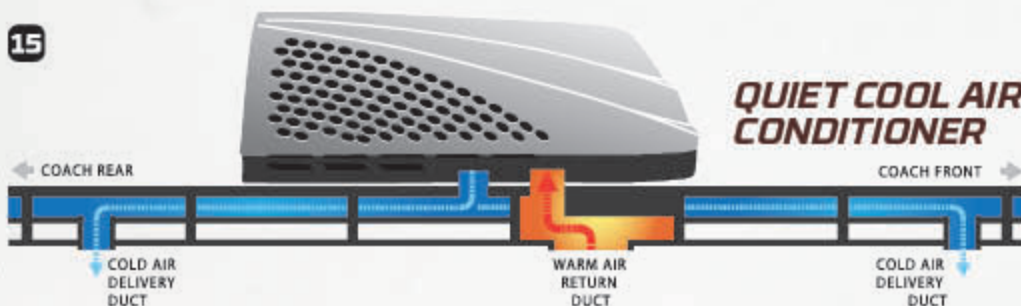
FLOOR CONSTRUCTION (R-21)

16. Residential Stain Resistant Cut Pile Carpet
17. Residential grade carpet padding
18. Residential Linoleum
19. Laminated floor with 3" thick aluminum floor joists & high density block foam
20. Large Capacity Heat Duct
21. Astro-Foil Insulation Below Holding Tanks
22. Fully Enclosed Underbelly with One Piece Fluted Polypropylene
23. Astro-Foil Insulated Slideout Floors

TIRES AND CHASSIS

24. 10" or 12" Steel "powder coated" I-beam frame with drop frame pass through storage
25. 16" E-load radial tires
26. MOR/ryde CRE 3000 suspension
27. New Auto leveling system

15



QUIET COOL AIR CONDITIONER

26



MOR/Ryde™ CRE 3000 SUSPENSION

The MOR/Ryde™ CRE 3000 Suspension increases dynamic axle travel by up to 3 inches! Increased travel means smoother towing, improved towability and better protection from damaging road shock.

SUPERIOR STANDARDS

MONTANA
HIGH COUNTRY



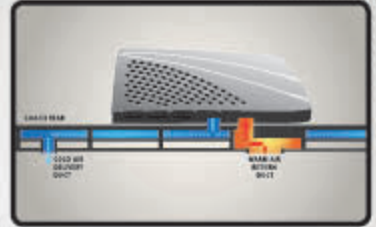
STAINLESS STEEL SINK W/ PULL OUT FAUCET W/ SOLID SURFACE SINK COVERS



78" SLIDE OUT CEILING HEIGHT



CEILING FAN



15K QUIET COOL AIR CONDITIONING



BUILT IN BEDROOM WINDOW SEATING W/LAUNDRY HAMPER



UPGRADE ROLLER SHADES



"SKY-VIEW" LIGHTED SKYLIGHT WITH SHADE



78" HIGH X 30" WIDE ENTRY DOOR



AWNING WITH LED LIGHT STRIP



CONVENIENCE FOUR STEP ENTRY



DROP FRAME CONSTRUCTION WITH MASSIVE STORAGE



SEAMLESS 48" X 30" FIBERGLASS SHOWER



TRUE 30" RESIDENTIAL MICROWAVE



FRAMELESS WINDOWS



TAILGATE BIKE RACK



KITCHEN POWER RAIN SENSOR VENT FAN W/MULTI-SPEED WALL CONTROL

WARRANTY FOR FULL TIME RVING*

MORE FULL TIME RVERS THAN ANY OTHER BRAND IN THE INDUSTRY!

There are more full time Montana campers on the road than any other towable brand in North America. With the most efficient, well developed warranty, parts and service group. Keystone RV provides unprecedented support and confidence to all Keystone brand customers.

*REFER TO KEystone RV COMPANY OWNERS MANUAL FOR LIMITED WARRANTY DETAILS



FOUR SEASON LIVING

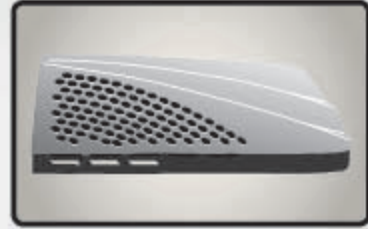
The industry leader in four season fifth wheel capabilities, Montana has been tested and approved for zero degree usage since 2005. Montana's Radiant technology insulation combined with Astro-Foil technology give you the ultimate in four season usage.



AUTO LEVELING SYSTEM



SLIDE AWNING PACKAGE



2ND AIR CONDITIONER



GENERATOR READY & OR ONAN 5.5 KW LP GENERATOR



KING SIZE BED (N/A 362RD)



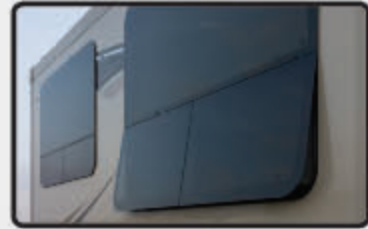
FREE STANDING DINETTE



THEATER SEAT IPO RECLINERS



POWER VENT FAN • BEDROOM IPO 2ND A/C • BATHROOM & HALF BATH



DUAL PANE FRAMLESS WINDOWS

INTERIORS



FLOORPLANS

MONTANA
HIGH COUNTRY



293RK

† EXCLUDING 2ND A/C - 12' 5" EXTERIOR HEIGHT W/OPTIONAL 2ND A/C

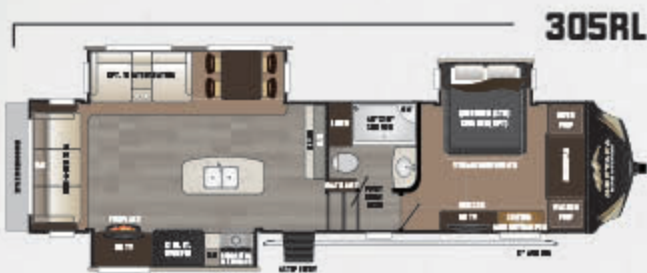
WEIGHT	CC	HITCH	LENGTH*	HEIGHT†	FRESH WATER	WASTE WATER	GRAY WATER	LPG
9777	3723	2110	34' 6"	12' 9"	64	49	87	60



352RL / 353RL
RV REFRIGERATOR RES. REFRIGERATOR

† EXCLUDING 2ND A/C - 12' 5" EXTERIOR HEIGHT W/OPTIONAL 2ND A/C

WEIGHT	CC	HITCH	LENGTH*	HEIGHT†	FRESH WATER	WASTE WATER	GRAY WATER	LPG
10682	3618	2300	36' 9"	12' 9"	64	49	98	60



305RL

† EXCLUDING 2ND A/C - 12' 5" EXTERIOR HEIGHT W/OPTIONAL 2ND A/C

WEIGHT	CC	HITCH	LENGTH*	HEIGHT†	FRESH WATER	WASTE WATER	GRAY WATER	LPG
10190	4080	2270	35' 0"	12' 9"	64	49	98	60



362RD

† EXCLUDING 2ND A/C - 12' 5" EXTERIOR HEIGHT W/OPTIONAL 2ND A/C

WEIGHT	CC	HITCH	LENGTH*	HEIGHT†	FRESH WATER	WASTE WATER	GRAY WATER	LPG
12524	3276	2690	40' 5"	12' 9"	64	87	98	60



310RE

† EXCLUDING 2ND A/C - 12' 5" EXTERIOR HEIGHT W/OPTIONAL 2ND A/C

WEIGHT	CC	HITCH	LENGTH*	HEIGHT†	FRESH WATER	WASTE WATER	GRAY WATER	LPG
10250	3905	2155	34' 4"	12' 9"	64	49	98	60



370BR

† EXCLUDING 2ND A/C - 12' 5" EXTERIOR HEIGHT W/OPTIONAL 2ND A/C

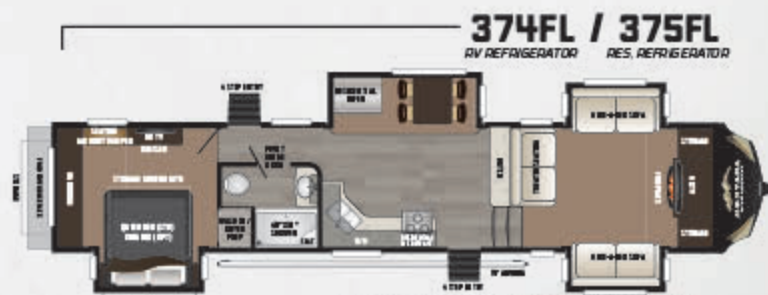
WEIGHT	CC	HITCH	LENGTH*	HEIGHT†	FRESH WATER	WASTE WATER	GRAY WATER	LPG
11683	3517	2305	40' 11"	12' 9"	64	49	87	60



340BH

† EXCLUDING 2ND A/C - 12' 5" EXTERIOR HEIGHT W/OPTIONAL 2ND A/C

WEIGHT	CC	HITCH	LENGTH*	HEIGHT†	FRESH WATER	WASTE WATER	GRAY WATER	LPG
12006	2794	2280	40' 11"	12' 9"	64	49	98	60



374FL / 375FL
RV REFRIGERATOR RES. REFRIGERATOR

† EXCLUDING 2ND A/C - 12' 5" EXTERIOR HEIGHT W/OPTIONAL 2ND A/C

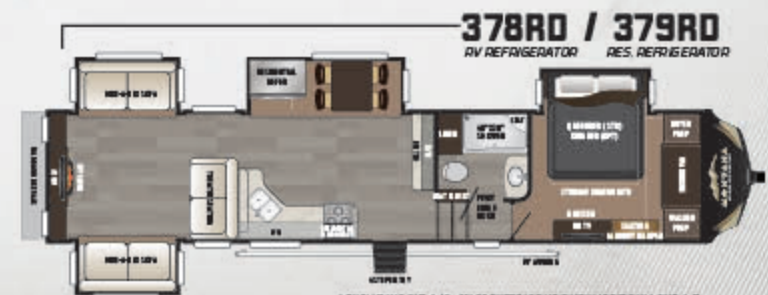
WEIGHT	CC	HITCH	LENGTH*	HEIGHT†	FRESH WATER	WASTE WATER	GRAY WATER	LPG
11668	3732	2265	41' 10"	12' 9"	64	38	76	60



358BH

† EXCLUDING 2ND A/C - 12' 5" EXTERIOR HEIGHT W/OPTIONAL 2ND A/C

WEIGHT	CC	HITCH	LENGTH*	HEIGHT†	FRESH WATER	WASTE WATER	GRAY WATER	LPG
12240	3160	2340	39' 10"	12' 9"	64	87	98	60



378RD / 379RD
RV REFRIGERATOR RES. REFRIGERATOR

† EXCLUDING 2ND A/C - 12' 5" EXTERIOR HEIGHT W/OPTIONAL 2ND A/C

WEIGHT	CC	HITCH	LENGTH*	HEIGHT†	FRESH WATER	WASTE WATER	GRAY WATER	LPG
11895	3515	2405	40' 4"	12' 9"	64	49	88	60

MOVING TO MONTANA PACKAGE

LIVING AREA FEATURES

- » Recliners
- » Tri-fold hide-a-bed sofa
- » Cognac walnut cabinetry
- » Brushed nickel cabinet hardware
- » Flush mounted LED interior lights
- » Brushed nickel decorative light fixtures
- » Upgrade window roller shades
- » Contemporary window treatments
- » Ceiling fan

KITCHEN FEATURES

- » Solid surface kitchen countertop
- » Stainless steel sink
- » Kitchen faucet with integrated pull down sprayer
- » Solid surface flush mount sink covers
- » Flush mount glass range cover
- » Stainless steel 30" over-the-range microwave
- » Stainless steel 22" oven with broiler
- » High output range with automatic igniter
- » 12 cubic foot four door refrigerator
- » Power vent fan with rain sensor in kitchen
- » Full extension drawer guides
- » Cabinet toe kicks
- » "Sky-View" lighted skylight w/shade

HOME ENTERTAINMENT

- » RG-6 satellite prep
- » HD Digital TV antenna with booster
- » 40" HD flat panel TV in living area
- » 32" HD flat panel TV in bedroom
- » DVD Player
- » Bluetooth soundbar with FM Tuner
- » Exterior speakers

BEDROOM FEATURES

- » 12 Volt charging station
- » Queen (60 by 80-inch) innerspring mattress
- » Designer bedroom headboard
- » Two bedside windows in slide out
- » Reading lights over bed
- » Bedroom closet prepped for combo OR 2 piece washer/dryer with separate 20amp circuits for each appliance

BATHROOM FEATURES

- » Seamless 48" x 30" fiberglass shower
- » Sky light over shower
- » Deluxe porcelain foot flush toilet
- » 18 gallon Per Hour DSI gas/electric water heater

COOLING SYSTEM

- » Main Level 15,000 BTU Quiet Cool air conditioning system
- » Wire and frame for ducted 2nd A/C in Bedroom

HIGH COUNTRY PACKAGE

CONSTRUCTION

- » Welded aluminum framed walls and floors
- » Four Season Living with R-10 sidewall, R-21 floor and R-38 roof insulation
- » R-15 Insulated slideout floors

TOWING

- » Max Turn front cap and radius frame with Hitch Vision™
- » MOR/ryde CRE 3000 Suspension
- » 16" 8-Lug Aluminum wheels
- » Dexter E-Z Lube axles
- » Back-up lights
- » Under mount spare tire and carrier

EXTERIOR

- » Black painted front cap
- » High gloss champagne fiberglass sidewalls
- » Automotive frameless windows
- » 30"x 78" Extra large entrance door
- » Fold away entry handle
- » Rear roof ladder
- » Enormous drop frame pass thru storage compartment
- » Slam latch pass thru storage compartment doors
- » Four step entry steps

EASY SET UP FEATURES

- » Wide stance electric front jacks

- » Electric rear stabilizer jacks
- » 12v electric awning with LED lights
- » Patio security light

» Central exterior water and convenience center

- Outside shower with quick connect hose
- Black tank flush
- Easy winterization kit
- Water heater bypass
- Power tank fill
- Enclosed low point drains
- Battery disconnect
- Cable/satellite hook-ups
- 12v light

OPTIONS

INTERIOR OPTIONS

- » King Bed (N/A 362RD)
- » 12 Cubic foot 4 door refrigerator
- » Residential French door refrigerator with ice maker and 1000 Watt inverter (353, 375, 379)
- » Electric fireplace (Mandatory 310, 362, 374, 375, 378, 379)
- » Free standing dinette with 4 chairs
- » Theater seating in place of recliners
- » Theater seating in place of living area hide-a-bed (358, 362)
- » High back desk chair (293)

EXTERIOR OPTIONS

- » Tailgate bike rack (Mandatory)
- » Electric automatic leveling system
- » Dual pane frameless windows
- » Low profile ducted 2nd 13,500 BTU A/C
- » Black slideout awnings package
- » Generator ready (Onan 5.5 KW specifications)
- » Onan Marquis Gold 5.5 KW LP generator



310RE SHOWN IN NUTMEG DECOR

MONTANA HIGH COUNTRY



PURCHASING YOUR RV LOCALLY

It's up to you where you purchase your new Montana HC, but may we suggest your local dealer? Not only does it help your local economy and provide jobs, but it will also give you an opportunity to develop a service relationship with someone that will come to know you and your coach. Congratulations on finding the best built, best equipped and best value in the industry. Happy travels!

THE COMPLETE CHOICE

FOR MORE INFORMATION ON KEYSTONE RV VISIT
WWW.BIT.LY/10A00LK

SCAN ME

FOR MORE INFORMATION ON KEYSTONE RV COMPANY



MONTANA
HIGH COUNTRY



Go RVing.



DISCLAIMER: Product information is as accurate as possible as of the date of publication of this brochure. All features, floor plans, and specifications in this brochure are subject to change without notice. Please also consult Keystone's web site at www.keystonerv.com for more current product information and specifications. Tow Vehicle Disclaimer. CAUTION: Owners of Keystone recreational vehicles are solely responsible for the selection and proper use of tow vehicles. All customers should consult with a motor vehicle manufacturer or their dealer concerning the purchase and use of suitable tow vehicles for Keystone products. Keystone disclaims any liability or damages suffered as a result of the selection, operation, use or misuse of a tow vehicle. KEYSTONE'S LIMITED WARRANTY DOES NOT COVER DAMAGE TO THE RECREATIONAL VEHICLE OR THE TOW VEHICLE AS A RESULT OF THE SELECTION, OPERATION, USE OR MISUSE OF THE TOW VEHICLE. *REFERENCE KEYSTONE RV COMPANY OWNERS MANUAL FOR LIMITED WARRANTY DETAILS. *Length is defined as the distance from the centerline of hitch pin/coupler to rear bumper of trailer. D116

YOUR LOCAL DEALER IS:

BUILT BY EXPERIENCE