

QuickSilver™

by *Living' Lite*

TOY HAULERS



Shown with off-road package





You take your play seriously and so do we. That's why we've designed a toy hauler that rises to the challenge. Six creative floorplans range in length from 23 to 34 feet. And with garage area lengths up to 20 feet in length, there's room to haul all the toys. It's strong 6-sided aluminum superstructure results in an extremely lightweight design that can be towed by most trucks and SUVs, making it all the more affordable and family-friendly.

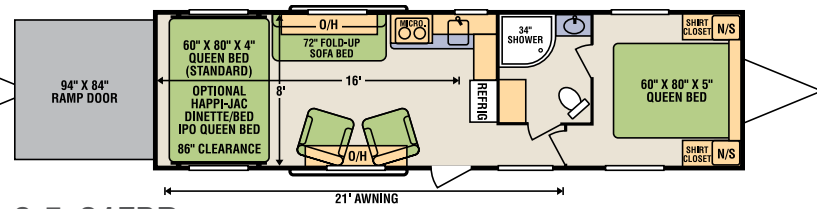
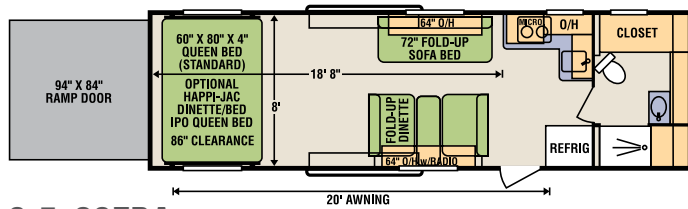
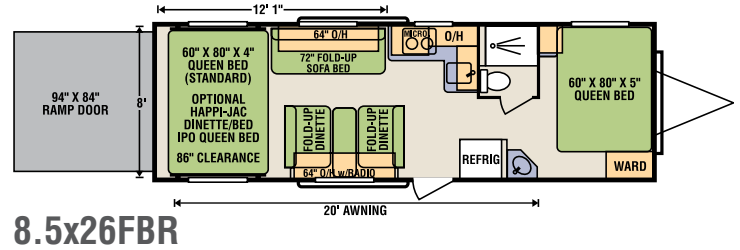
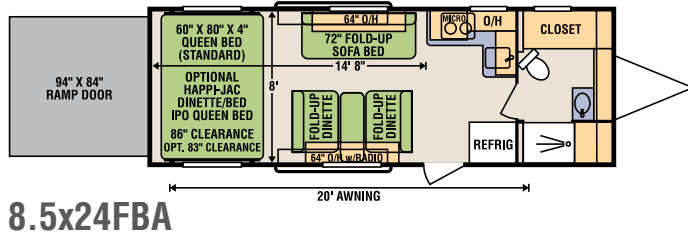
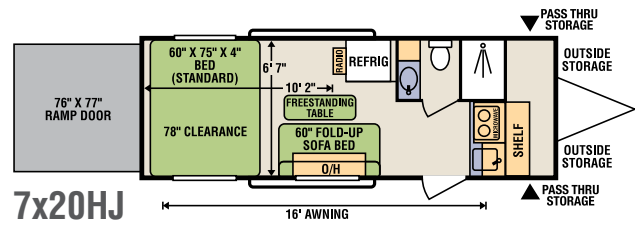
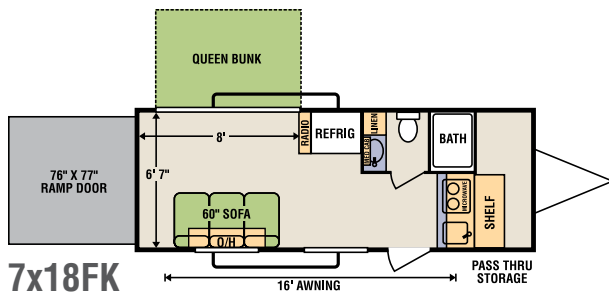


Furniture flips up out of the way to haul the toys, then folds down to create comfortable living and sleeping quarters. The unique tongue and groove aluminum flooring system includes D-rings in the garage area.



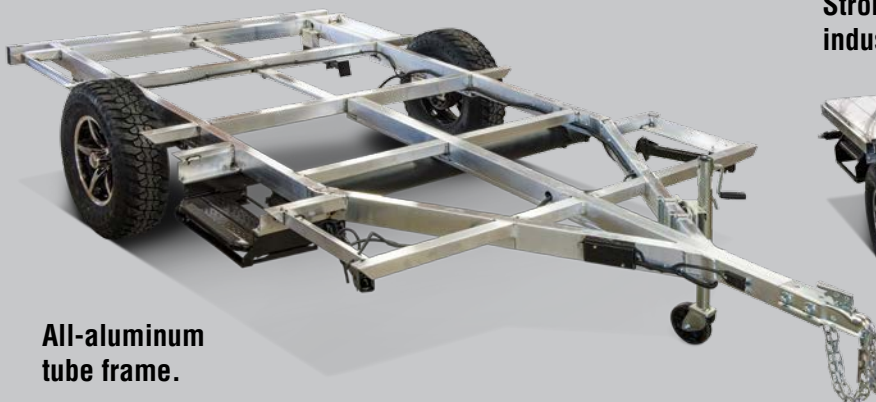
To feed the gang, the kitchen is equipped with a large 6 cubic foot refrigerator, two-burner stovetop, convection microwave, and solid surface countertops. The all-aluminum cabinets feature aircraft-style latches for easy and secure opening and closing.

The all aluminum interior design extends the life of your unit with no wood to warp or rot.



	7x18FK	7x20HJ	8.5x24FBA	8.5x26FBR	8.5x28FBA	8.5x31FBR
Unloaded Vehicle Weight* (lbs.)	3,320	4,040	5,030	5,400	6,082	6,950
Dry Hitch Weight* (lbs.)	580	670	930	900	880	1,020
Cargo Carrying Capacity (lbs.)	3,680	2,960	3,770	3,400	3,598	3,450
GVWR (lbs.)	7,000	7,000	8,800	8,800	8,800	10,400
Exterior Height with A/C	9' 11"	10'	11' 6"	11' 6"	11' 6"	11' 10"
Interior Width	80.5"	79"	96.5"	96.5"	96.5"	96.5"
Exterior Length	22' 3"	24' 2"	28' 4"	30' 3"	32'	34' 8"
Box Length	19' 1"	20' 10 3/4"	23' 7"	26'	28' 5"	30' 8"
Rear Interior Height	88"	88"	98"	98"	98"	98"
Distance Between Wheel Wells	79"	79"	78.5"	78.5"	78.5"	78.5"
Fresh Water Capacity (gal.)	50	50	63	63	63	63
Black Water Capacity (gal.)	28	28	28	28	28	28
Gray Water Capacity (gal.)	28	28	28	28	28	28
Tire Size	14"	14"	15"	15"	15"	15"
Awning	16'	16'	20'	20'	20'	21'
Door to Refrigerator (approx. garage dimension)	8'	10' 2"	16' 6"	16' 1"	20' 4"	10' 8"
Door to Kitchen (approx. garage dimension)	8'	16'	14' 6"	12' 4"	18' 4"	16'

*This weight reflects the rolling average unit weight for each model. Your trailer weight will vary according to optional equipment.



**All-aluminum
tube frame.**

**Strongest Toy Hauler floor in the
industry – 100% aluminum!**



2018 Exterior Colors



Crystal White – Aluminum/Fiberglass



Silver Frost – Aluminum



Light Pewter – Aluminum



Gray – Fiberglass



Charcoal Gray – Aluminum



Blue – Fiberglass



Victory Red – Aluminum/Fiberglass



Orange – Fiberglass



Black – Aluminum/Fiberglass

Standards

Living Area/Kitchen

- All-Aluminum Tube Cabinet Structures
- All-Aluminum Interior Cabinets – No Wood
- Audio Visual Package w/AM/FM/iPod Stereo System w/Speakers, Digital TV Antenna, TV Swivel Bracket, Cable Hookup & 12V/110 Recept
- Residential Freeze/Crack-Proof Linoleum
- Composite Dinette Table (portable)
- Solid-Surface Countertops
- Stainless Steel Sink w/High Rise Faucet
- Flush-Mount Glass Cooktop Cover
- High-Efficient LED Lights
- 60 x 80 Mattress in most Floorplans
- (2) Flush-Mount Interior Speakers
- Charging Center w/USB Ports

Appliances

- Convection Microwave
- 6.0 CU FT Refrigerator
- Flush-Mount 2-Burner Stovetop
- 6 GAL LP/Electric DSI Water Heater
- High-Power 12V Vortex Fan

Bath

- Porcelain Foot-Flush Toilet
- All Aluminum Shower Surround (VBF)

- Mirrored Medicine Cabinet (N/A 8.5x28)

Exterior/Construction Features

- EXTREMELY LIGHTWEIGHT DESIGN
- 6-Sided Aluminum Superstructure
- 5" Double Aluminum Frame w/3" Tongue Tube Middle Rail – 3-Tier Frame
- Dual-Pane Euro Windows w/Built-In Day/Night Shades/Screens (double acrylic tint, opens 90 degrees)
- Composite Material throughout unit (water and mold resistant)
- All Aluminum Floor Decking w/D-Rings (can order w/no lino)
- Vacuum Bonded Walls, Laminated w/Composite Material, 3-Tier Glue Process (stronger, more durable)
- .040 Aluminum Siding w/Full Body Automotive Paint
- Insulated Walls, Roof & Caps
- Alpha Superflex® Roof w/12-Year Limited Warranty (more durable, less chalking & streaking)
- Power Tongue Jack
- Dexter® Torsion Axles
- Auto-Adjusting Brakes w/Easy Lube Axles
- Black Tank Flush
- Aluminum Tank Brackets
- Detachable Marine Grade Power Cord
- Nitro Filled Radial Tires (sidewall & tread function independently, allowing more tire flexibility. Ensures more road contact, more stability & control)
- High-Polished Aluminum Rims
- Gutter w/Downspouts
- Pre-Wired Solar
- Battery Disconnect
- Cable/Satellite Prep
- (2) Blue LED Lighted Exterior Speakers
- High-Efficiency LED Lights
- Hot/Cold Exterior Shower
- Diamond Plate Skirt Metal
- Radius Baggage Doors w/Magnetic Catches
- Spring Assisted Ramp Door
- Pull-Down Rear Screen over Garage Door Opening
- Spare Tire
- 10" Diamond Plate Interior Kick Plate
- Aluminum Tread Double Step (N/A 7x18, 7x20)
- 50 AMP Detachable Marine-Grade Power Cord w/50 AMP Converter (30 AMP for 7' wide units)

- Power Fan
- Off-Road Package (15" all-terrain tires, extra clearance)
- Power Awning w/LED Lighting Upgrade
- High Gloss Gelcoat Fiberglass (available in 6 colors)
- Fuel Delivery System (30 GAL gasoline tank w/pump) (N/A 7x18, 7x20)
- Dual 30# LP Tanks (IPO STD 20# tanks)
- Generator Prep (N/A 7x18, 7x20) (includes B-Door w/vents, remote start w/meter, 50 AMP auto-transfer switch, remote wire harness)
- Gas 5500W Onan® Generator (incl. gen prep and fuel delivery system, N/A 7x18, 7x20)
- Ramp Door Patio Package w/Railing & Cables
- RVIA/QAI/Canadian Standards

Adventure Living Package

Dual 20# LP Tanks w/Cover, Tank Monitor System, Awning, Hi-Power Vortex Vents, Pull-Down Rear Screen, Convection Microwave Oven, Rear Loading Lights, INT & EXT LED Lighting, AV Prep, incl: AM/FM/DVD/Bluetooth Stereo System w/Inside & Outside Speakers, Digital TV Antenna, Stereo Antenna, 12V/110V Outlet, Locking Swivel TV Bracket, USB Ports, Larger Cabinet Doors.

Options

- Low Profile 13,500 BTU Air Conditioner
- 2nd A/C – 11,000 BTU Low Profile
- LED TV
- Roof Mounted 15,000 BTU A/C
- 2nd Happijac® Queen Bed (N/A 7x18, 7x20)
- Happijac® Dinette/Bed IPO Happijac® Bed (N/A 7x18, 7x20)

Dealer:



True 2-Year Limited Warranty!
Livin' Lite's 24-month hitch-to-bumper limited warranty umbrella is the best 2-year warranty in the business, covering more than 1,500 operations codes for a full two years, and protects your investment while you enjoy your new RV.



Portions of this brochure were used with the expressed authority of Dexter Axle, but Dexter Axle is not responsible for the accuracy of the information contained herein.



985 N 900 W • Shipshewana, IN 46565
www.livinlite.com

Due to continual research and advances, manufacturer reserves the right to change specifications, design, price and equipment without notice, and assumes no responsibility for any error in this literature. Some items shown are not included as standard or optional equipment. ©2017 Livin' Lite | 11/16/17 | 30M