

ROCKWOOD

Windjammer • Signature Ultra Lite Travel Trailers & Fifth Wheels

ROCKWOOD
Windjammer • Signature Ultra Lite Travel Trailers & Fifth Wheels



ROCKWOOD
WINDJAMMER



WHO THOUGHT
INNOVATION
COULD BE SO
LUXURIOUS?

Thanks to it's "V" nose design, every possible space is used for interior room and storage. The aerodynamic, six-sided vacuum-bonded exteriors can be towed by a wide variety of vehicles on the market. A variety of standards and options gives extensive customization potential for each individual consumer.

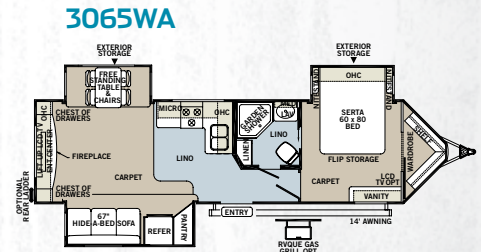
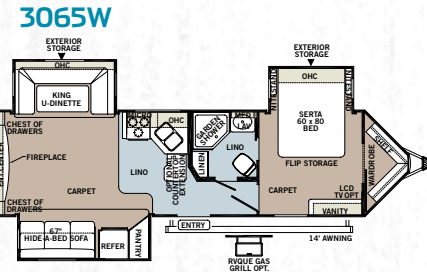
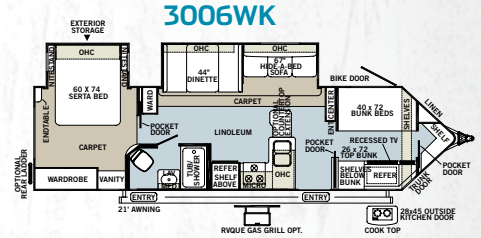
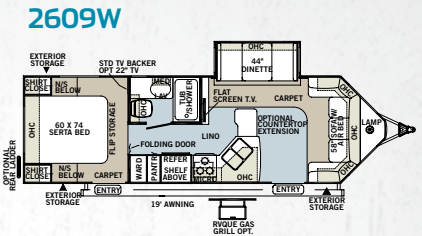
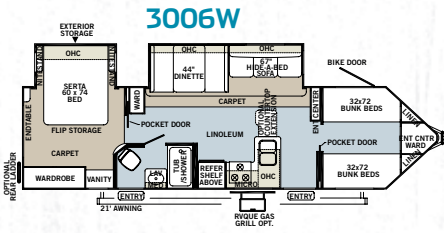
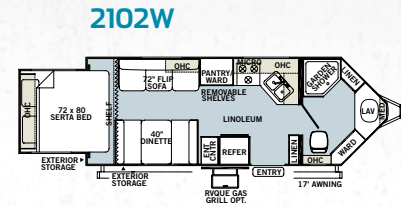
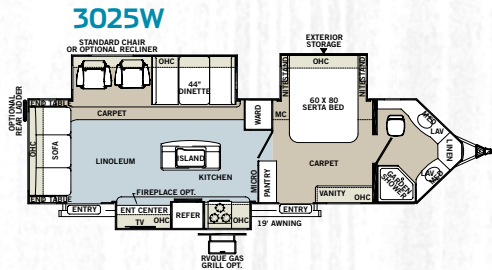
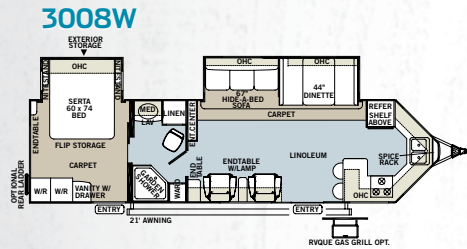
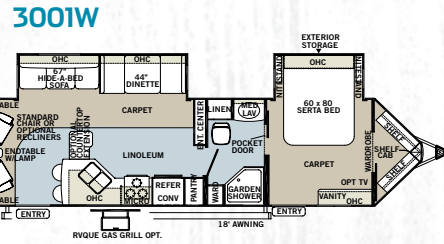
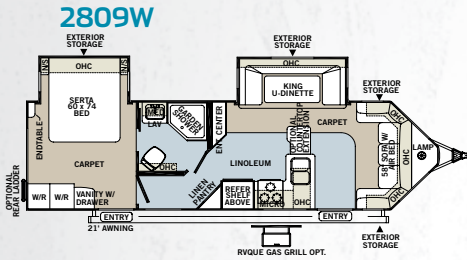
3065WA London Sky With Cherry



Front bedroom with a spacious wardrobe walk in closet

ROCKWOOD

WINDJAMMER

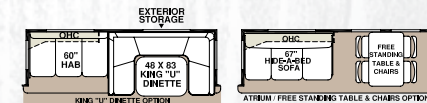


Specifications

Model number of any particular unit does not necessarily reflect the overall length of the unit itself. Dry weight are estimates.

MODEL	2102W	2609W	2809W	3001W	3006W	3006WK	3008W	3025W	3065W	3065WA
BASE/DRY UNIT WEIGHT	4991	5674	6084	6801	6902	6948	6950	7440	7132	6998
BASE DRY HITCH WEIGHT	597	624	691	800	808	877	894	1097	909	952
BASE DRY AXLE WEIGHT	4394	5050	5393	6001	6094	6071	6056	6343	6223	6046
CARGO CAPACITY	1559	1476	1766	1749	1648	1602	1700	1510	1518	1652
LENGTH	24' 7"	29' 7"	31' 7"	34' 5"	34' 5"	34' 5"	34' 5"	34' 5"	34' 5"	34' 5"
WIDTH	96"	96"	96"	96"	96"	96"	96"	96"	96"	96"
HEIGHT W/O A/C	121.5"	121.5"	121.5"	121.5"	121.5"	121.5"	121.5"	121.5"	121.5"	121.5"
INTERIOR HEIGHT	80"	80"	80"	80"	80"	80"	80"	80"	80"	80"
FRESH WATER CAPACITY	43 gal	43 gal	43 gal	43 gal	43 gal	43 gal	43 gal	43 gal	43 gal	43 gal
GRAY WATER CAPACITY	38 gal	38 gal	38 gal	38 gal	38 gal	38 gal	76 gal	76 gal	38 gal	38 gal
BLACK WATER CAPACITY	38 gal	38 gal	38 gal	38 gal	38 gal	38 gal	38 gal	38 gal	38 gal	38 gal

Slide-Out Options



** Slide options available on Signature/Windjammer super slides only

ROCKWOOD OPTIONAL

DIAMOND PACKAGE

INCLUDES ALL INTERIOR FEATURES
IN THE PLATINUM PACKAGE.



Tan High Gloss Fiberglass with Black Accents (Diamond Package only)

THE UPGRADE PACKAGE YOU WANT ON ANY MODEL YOU CHOOSE.

Always striving to make the best even better, Rockwood has assembled a collection of upscale features and amenities designed to bring distinctive styling and added luxury to the Signature Ultra Lite series of travel trailers and fifth wheels. As well as, to the aerodynamic Windjammer series of travel trailers.

Complete details of the Diamond Package contents can be found in the Standards and Options section.



Shielded Awning Covers (Diamond Package only)



Tinted Bonded Frameless
Windows with Tan Fiberglass
(Diamond Package only)

EVER HEARD, "YOU CAN'T HAVE IT BOTH WAYS?" WELL NOW YOU CAN.

WELCOME TO THE PLATINUM PACKAGE

NOW YOU CAN HAVE ALL THE RICH INTERIOR APPOINTMENTS OF THE DIAMOND PACKAGE WITH THE TRADITIONAL WHITE FIBERGLASS EXTERIOR YOU'VE ALWAYS LOVED.



Shown Above: "Tufted" Hide-A-Bed Sofa Upgrade (with London Sky/Cherry Decor). Deluxe Interior Window Treatment. Upgrade Decorative Slide out Fascia. (Diamond and Platinum Packages)

Now the rich Diamond Package interior features are available with a traditional exterior. This optional Platinum Package also includes the exclusive tinted bonded frameless windows with the white fiberglass you've always loved. Complete details of the Platinum Package contents can be found in the Standards and Options section



Tinted Bonded Frameless Windows with White Fiberglass (Platinum Package only)



Upgraded Cabinetry Hardware (Diamond and Platinum Packages)



Solid Surface Corian Counter Tops in the Kitchen and Living Room (Diamond and Platinum Packages)

ROCKWOOD
SIGNATURE ULTRA LITE
TRAVEL TRAILERS



I WISH RV'ING WAS LIKE THIS WHEN I WAS A KID.

One thing Rockwood has learned with over 19 years of experience, always continue to improve. As a result, they continue to provide you with the innovative floor plans, features, and options that make choosing a Signature Ultra Lite easier than ever before.



Convenience of an Outside Kitchen

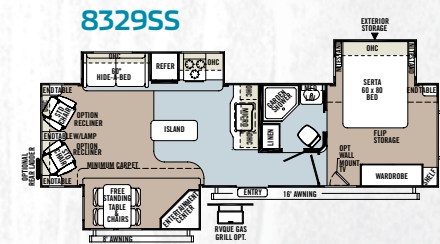
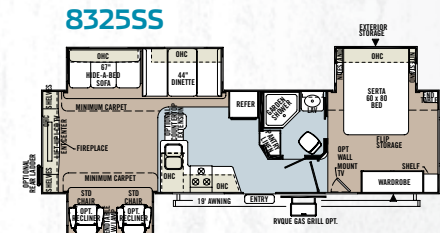
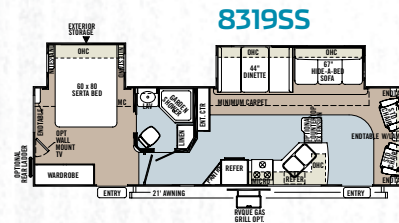
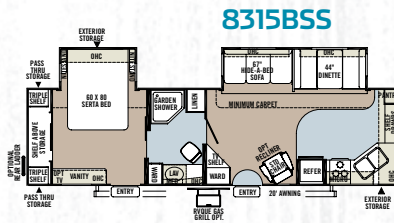
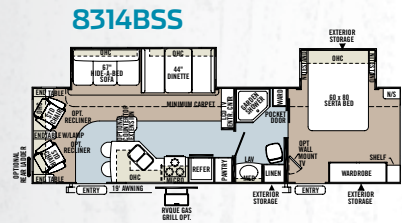
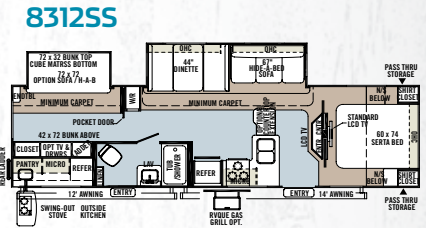
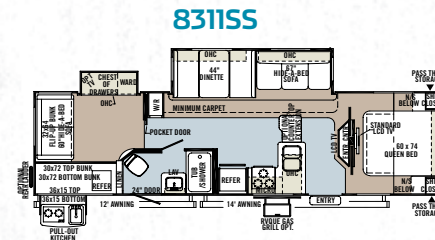
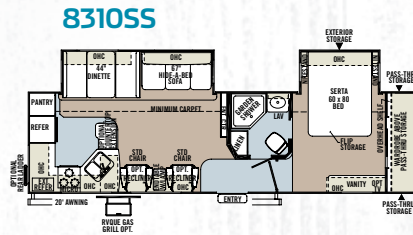
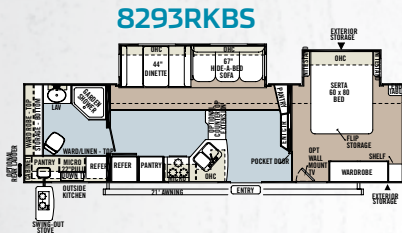


While Maintaining Exceptional Sleeping Capacity (Standard with a Bedroom Hide-A-Bed Sofa).

ROCKWOOD

SIGNATURE ULTRA LITE

TRAVEL TRAILERS

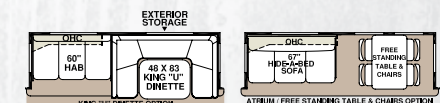


Specifications

Model number of any particular unit does not necessarily reflect the overall length of the unit itself. Dry weight are estimates.

MODEL	8293RKBS	8310SS	8311SS	8312SS	8314BSS	8315BSS	8319SS	8325SS	8329SS
BASE/DRY UNIT WEIGHT	6853	6994	6951	6908	6724	6925	6873	6974	7150
BASE DRY HITCH WEIGHT	753	570	786	836	815	945	694	831	883
BASE DRY AXLE WEIGHT	6100	6424	6165	6072	5909	5980	6179	6143	6267
CARGO CAPACITY	1597	1456	1499	1672	1726	1475	1777	1676	1600
LENGTH	34' 9"	34' 9"	34' 9"	34' 9"	34' 9"	34' 9"	34' 9"	34' 9"	34' 9"
WIDTH	96"	96"	96"	96"	96"	96"	96"	96"	96"
HEIGHT W/O A/C	121 1/2"	121 1/2"	121 1/2"	121 1/2"	121 1/2"	121 1/2"	121 1/2"	121 1/2"	121 1/2"
INTERIOR HEIGHT	80"	80"	80"	80"	80"	80"	80"	80"	80"
FRESH WATER CAPACITY	43 gal	43 gal	44 gal	43 gal	43 gal	43 gal	43 gal	43 gal	43 gal
GRAY WATER CAPACITY	38 gal	76 gal	38 gal	38 gal	38 gal	76 gal	38 gal	76 gal	38 gal
BLACK WATER CAPACITY	38 gal	38 gal	38 gal	38 gal	38 gal	38 gal	38 gal	38 gal	38 gal

Slide-Out Options



** Slide options available on Signature/Windjammer super slides only

ROCKWOOD

SIGNATURE ULTRA LITE

FIFTH WHEELS



COMFORTS LIKE THIS MAKES YOU FORGET YOU'RE NOT HOME.

The Rockwood Signature Ultra Lite is the ultimate luxury product in the light weight trailer market. Offering more floor plans, features and options than any other in its class, we stand proudly showcasing over 19 years of experience in a premium product. All Signature Ultra Lite Fifth Wheels come standard with a Reese Revolution Hitch allowing you to tow with almost any size truck bed.



8280WS Manhattan with Hickory



Comfortable Bedroom with Queen Size Serta Mattress and Wardrobe Slide



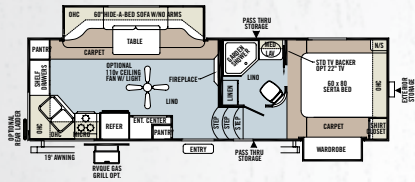
Open Kitchen with Spacious Living Room

ROCKWOOD

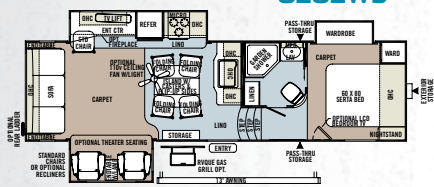
SIGNATURE ULTRA LITE

FIFTH WHEELS

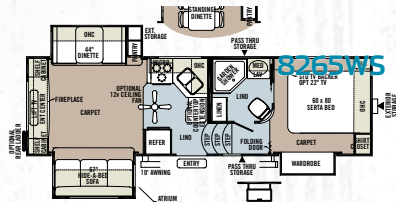
8260WS



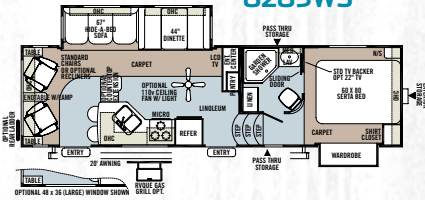
8282WS



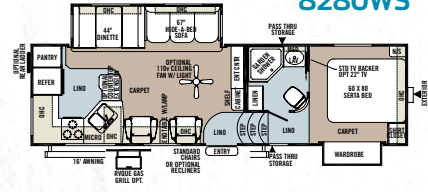
8265WS



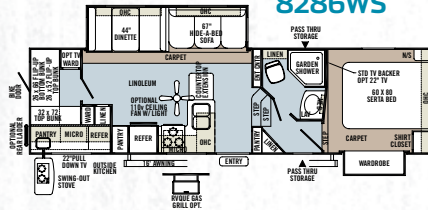
8285WS



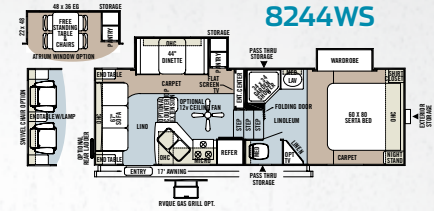
8280WS



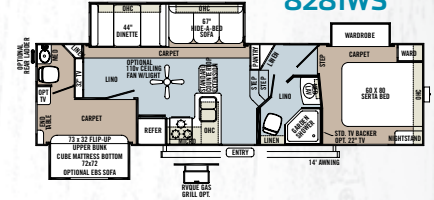
8286WS



8244WS



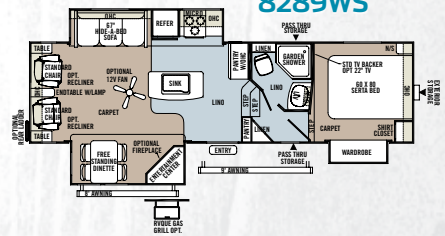
8281WS



8288WS



8289WS

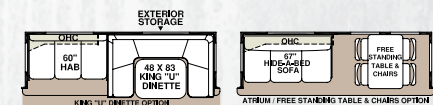


Specifications

Model number of any particular unit does not necessarily reflect the overall length of the unit itself. Dry weight are estimates.

MODEL	8244WS	8260WS	8265WS	8280WS	8281WS	8282WS	8285WS	8286WS	8288WS	8289WS
BASE/DRY UNIT WEIGHT	6437	6795	7017	7130	7981	7505	7268	7658	7577	7793
BASE DRY HITCH WEIGHT	1288	1495	1159	1046	1600	1184	1146	1447	1487	1524
BASE DRY AXLE WEIGHT	5149	5300	5858	6084	6381	6321	6122	6211	6090	6269
CARGO CAPACITY	1413	1755	1633	1820	1369	1645	1682	1592	1673	1557
LENGTH (Bumper to hitch front)	26' 9"	29' 3"	29' 7"	31' 3"	31' 8"	31' 8"	31' 8"	31' 8"	31' 8"	31' 8"
WIDTH	96"	96"	96"	96"	96"	96"	96"	96"	96"	96"
HEIGHT W/O A/C	148.5"	148.5"	148.5"	148.5"	148.5"	148.5"	148.5"	148.5"	148.5"	148.5"
FRESH WATER CAPACITY	43 gal	43 gal	43 gal	43 gal	43 gal	43 gal	43 gal	43 gal	43 gal	43 gal
GRAY WATER CAPACITY	38 gal	76 gal	38 gal	76 gal	76 gal	38 gal	76 gal	76 gal	76 gal	76 gal
BLACK WATER CAPACITY	38 gal	38 gal	38 gal	38 gal	76 gal	38 gal	38 gal	38 gal	38 gal	38 gal

Slide-Out Options



** Slide options available on Signature/Windjammer super slides only

ROCKWOOD

QUALITY FEATURES



FEATURES THAT MAKE YOUR TRIPS FEEL LIKE HOME.

Rockwood takes careful consideration to each feature added into each product produced. Every detail is considered ranging from extra sleeping room, storage, comfort and convenience.

Take time to review the features listed below and match them with the competition's products. We're confident you'll discover Rockwood is the superior choice.



ROCKWOOD

QUALITY FEATURES

- 1 Residential Style Air Bed Sofa *(Std. Most Models)*
- 2 Full 60" x 80" queen air mattress on standard sofa *(48" x 80" Double air mattress with King- U-Dinette option.)*
- 3 Extra large dinette storage drawers *(Std.)*
- 4 Full extension metal drawer guides in the kitchen *(Std.)*
- 5 Additional storage under sofa
- 6 Free-standing chair with seat storage and table with extension *(Opt.)*
- 7 32" LCD TV w/ 5.1 Dolby Speaker System with "Bluetooth" Technology *(Most Models)*



ROCKWOOD

QUALITY FEATURES

- 1 Forest River Switch Center *(Std.)*
- 2 Gaming plate *(Std.)*
- 3 Day night shades *(Std.)*
- 4 Serta residential grade mattress *(Std.)*
- 5 Door side cable hook up with electric outlet *(Std. Selected Models)*
- 6 Heated holding tanks With 12 Volt heat pads *(Std.)*
- 7 For convenient winterizing, easy access to the water pump/filter and outside anti-freeze inlet are provided. *(Std. FW)*
- 8 Heated pass through storage With separated front trunk area *(Std. FW)*
- 9 TPO front cap adds strength and durability *(Std.)*
- 10 Front window With rock guard for additional daylight *(Most TT models)*

ROCKWOOD

LUXURIOUS RESIDENTIAL FABRICS



LONDON SKY



TAYLOR SAND



MANHATTAN



CHERRY DÉCOR OPTION



HICKORY DÉCOR OPTION



STANDARD FLOOR COVERING



OPTIONAL FLOOR COVERING

ROCKWOOD
QUALITY
CONSTRUCTION



THE DETAILS ARE WHAT MAKE ALL THE DIFFERENCE.

Rockwood takes pride in constructing the very best products possible in each price point. From our entry level units to our top of the line products, no short cuts are taken to achieve excellence.

From the all-steel I-beams to the residential interior amenities to the vacuum-bonded exteriors, Rockwood products are quality-built from the ground-up.



1



3



4



6



7

TORFLEX
RUBBER TORSION SUSPENSION AXLES



8

ROCKWOOD
QUALITY
CONSTRUCTION

- 1 Glued and screwed wood cabinetry
- 2 Aluminum dinette frames for added strength and weight savings
- 3 Vacuum-bonded floor With 16" on center aluminum floor joists
- 4 Storage Doors With Slam Latches ([Select Locations](#))
- 5 All Steel "I" beam frame construction
- 6 Enclosed underbelly protects trailer components as well as increasing aerodynamics
 - Independent wheel suspension and self-damping action
 - Rubber cushioning eliminates metal-to-metal contact.
 - Forged torsion arm for maximum strength
- 7
- 8 Aluminum frame construction and high gloss fiberglass exterior with deluxe graphics



ROCKWOOD

QUALITY CONSTRUCTION

ROOF CONSTRUCTION



Vacuum bonded radius roof With vaulted ceiling providing superior insulation and more interior height.



4" thick roof With built-in insulated A/C ducts.



Built strong to enable you to conveniently perform periodic roof maintenance.

WALL STRENGTH



Structurally engineered materials makes our vacuum-bonded walls some of the strongest in the industry.

VACUUM-BONDED LAMINATED CONSTRUCTION



Rockwood is one of the few manufacturers that is a **fully 6 sided vacuum-bonded trailer**. Our walls, floors, roof, fronts and backs are all built vacuum-bonded to ensure a light weight strong structural trailer.

WINDJAMMER & SIGNATURE ULTRA LITE

MODELS	W	SUL TT	SUL FW
INTERIOR FEATURES			
• Hickory and Cherry (w/ Solid Cherry Hand Rubbed Cabinet Doors) Interior	0	0	0
• Decorative Slide Out Fascia	S	S	S
• Upgraded Decorative Slide Out Fascia	DP/PP	DP/PP	DP/PP
• Solid Wood and Raised Panel Doors and Drawers	S	S	S
• Screwed and Glued Cabinetry	S	S	S
• Residential Full Extension Metal Drawer Guides in Kitchen	S	S	S
• Upgraded Cabinetry Hardware	DP/PP	DP/PP	DP/PP
• Flooring: Carpet and an Engineered Mold and Mildew Resistant Floor Covering	S	S	S
• Minimum Carpet available	0	0	0
• Floor Ducted Furnace	S	S	S
• 13,500 BTU Ducted Roof Air	S	S	S
• 15,000 BTU Ducted Roof Air	0	0	0
• Fireplace (Std. 3065W, 3065WA, 8325SS, 8260WS, 8265WS Only) (Opt. 3025W, 8329S, 8288WS, 8289WS Only)	S*/O*	S*/O*	S*/O*
• Ceiling Fan	--	--	0
• Carbon Monoxide Detector	SO	SO	SO
• 12 Volt Power Plug With USB Charging Port	S	S	S
• CSA	0	0	0
• Monitor Panel	S	S	S
• Battery Disconnect Switch	S	S	S
• 55 Amp Converter With Charger	S	S	S
• LED 12 Volt Interior Lighting	S	S	S
• Interior Floor Light by Entrance Door	S	S	S
• Directional Reading Lights on Sofa Slides	S	S	S
• Residential Dome Style Lights Over Sofa and Table	S	S	S
• Upgraded Recessed Lighting Around Medicine Cabinet	S	S	S
• LCD TV With 5.1 Digital Dolby Surround Sound Speaker System	S	S	S
• Digital AM/FM/DVD w/ "Bluetooth" Technology	S	S	S

MODELS	W	SUL TT	SUL FW
• MP3 Player Hook-Up	S	S	S
• HDMI Cable to Enable TV Speakers to Play Broadcast Digital Surround Sound	S	S	S
• 22" LCD TV Mounted in Bedroom (Std., Only on TT Models w/ Center Entertainment Floor Plans)	--	S*	--
• LCD Bedroom TV With Outside Mounting Bracket	0	0	0
• Drop Down 22" LCD TV in O/S Kitchen (8293RKBS, 8286WS Only)	--	S*	S*
• Jack Knife Sofa (Std. 8244WS, Opt. 8281WS)	--	--	S*/O*
• Air Hide-A-Bed Sofa w/ Storage (N/A w/: 2102W, 8244WS) (Opt., 8312SS 2nd sofa)	S*	S/O*	S*
• Upgraded "Tufted" Air Hide-A-Bed Sofa w/ Storage (N/A w/: 2102W, 2609W, 2809W, 3025W, 8329SS, 8244WS, 8260WS, 8282WS)	DP*/PP*	DP*/PP*	DP*/PP*
• Swivel Chair(s) (Opt. 8244WS)	S*	S*	S*/O*
• Lazy Boy Leather Recliner Option: Available ILO All Units With Barrel Chairs	0	0	0
• End Table With Attached Lamp (Where available)	S	S	S
• Designer Valances w/ Lambrequin Arms	S	S	S
• Day/Night Shades	S	S	S
• Deluxe Interior Window Treatment	DP/PP	DP/PP	DP/PP
• Aluminum Bed and Dinette Frames	S	S	S
• 44" Family Style Dinette (N/A w/: 2809W, 3065W, 3065WA, 8329SS, 8260WS, 8282WS, 8289WS)	S*	S*	S*
• 48" X 84" Spacious King-U-Style Dinette (Std. 2809W, 3065W) (N/A w/: 2102W, 2609W, 3065WA, 8325SS, 8329SS, 8244WS, 8260WS, 8265WS, 8282WS, 8288WS, 8289WS)	S*/O*	0*	0*
• Free Standing High Pressure Laminated Table With Swing Level Leg	S	S	S
• Movable Table/Island w/ Folding Chairs (Std. 8282WS)	--	--	S*
• Super Dinette w/ Hide-A-Bed Sofa (Std. 8260WS)	--	--	S*
• Free Standing Table and Chairs (NA w/: 2102W, 8260WS, 8282WS) (Std. 3065WA, 8329SS, 8289WS)	0*	S*/O*	S*/O*

MODELS	W	SUL TT	SUL FW
• Stainless Steel Appliances	0	0	0
• Raised Refrigerator Panels	0	0	0
• Auto Gas/Electric Refrigerator	S	S	S
• Three Burner High Output Gas Range	S	S	S
• Upgraded 22" Gas Oven	S	S	S
• Microwave	S	S	S
• Solid Surface Corian Counter Tops in Kitchen/Living Room	DP/PP	DP/PP	DP/PP
• Flush Mount Stone Cast Sinks With Lift-Off Kitchen Faucets	S	S	S
• Residential One-Piece Sink Cover/ Cutting Board	S	S	S
• Water-Pur Filtration System	SO	SO	SO
• Counter Top Extension (Std. 8281WS, 8286WS, 8288WS) (N/A w/: 2102W, 3008W, 3025W, 3065WA, 8315BSS, 8329SS, 8260WS, 8282WS, 8289WS)	0*	0*	S*/O*
• Trash Can in Kitchen (Most Models)	S	S	S
• Tub Surround	S	S	S
• Bathroom Skylight	S	S	S
• Six Gallon "Quick Recovery" 110 DSI Gas/Electric Water Heater	S	S	S
• Water Heater By-Pass Kit	S	S	S
• Residential Style Porcelain Bowl Foot Flush Toilet	S	S	S
• Create-a-Breeze Three Speed Fantastic Fan With Vent Cover	SO	SO	SO
• Extra Create-a-Breeze Fan	0	0	0
• Residential Serta Mattress Upgrade	S	S	S
• Heated Mattress	0	0	0

EXTERIOR FEATURES

• Fully Laminated Aluminum Frame (Floor, Sidewall, & Roof)	S	S	S
• Insulation Factors R-7 Side Wall, R-12 Floor and R-14 Roof	S	S	S
• Radius Roof With Vaulted Interior Ceilings	S	S	S
• One Piece Seamless Roofing Membrane	S	S	S

W = WINDJAMMER
SUL/TT = SIGNATURE ULTRA LITE TRAVEL TRAILER
SUL/FW = SIGNATURE ULTRA LITE FIFTH WHEEL

S = STANDARD
SO = STANDARD OPTION
0 = OPTIONAL
-- NOT AVAILABLE

* = SELECTED MODELS
DP = DIAMOND PACKAGE
PP = PLATINUM PACKAGE



MODELS	W	SUL TT	SUL FW
• TV Antenna w/ Cable & Satellite Hook-Up	S	S	S
• Rear Ladder (N/A w/ 2102W)	O*	O	O
• Laminated Fiberglass Sidewalls With High Gloss Finish	S	S	S
• Laminated Taupe Color Fiberglass Sidewalls With High Gloss Finish and Color Keyed Roof	DP	DP	DP
• Deluxe TPO High Gloss Front Cap	S	S	S
• Electric Slide-Out	S	S	S
• Decorative Frame Skirting	S	S	S
• Power Awning With Adjustable Rain Dump	S	S	S
• Power Awning With Adjustable Rain Dump and Shielded Awning Covers	DP	DP	DP
• Awning Slide Topper	O	O	O
• 30" Entrance Door (Most Models)	S	S	S
• Lighted Entry Step	S	S	S
• Large Grab Handles	S	S	S
• Windows w/ Tinted Safety Glass	S	S	S
• Tinted Bonded Frameless Windows	DP/PP	DP/PP	DP/PP
• Thermo Pane Window Upgrade	O	O	O
• Atrium Slide Windows (Super Slides)	S*/O*	S*/O*	S*/O*
• Outside Gas Grill and Worktable	O	O	O
• Outside Grill Prep w/ LP Hookup and Backer	S	S	S
• Outside Speakers	S	S	S
• Outside Shower	S	S	S
• Front Outside "Trunk" Storage Separated From Heated Pass Thru Storage Compartment	--	--	S
• Outside Antifreeze Inlet for Convenient Winterizing	S	S	S
• Slam Latches on Most Exterior Storage Doors	DP	DP	DP
• Slam Latch on Both Side Pass Thru Storage Doors & Front Compartment Door	--	--	S
• Slam Latch on Pass Thru Storage Doors (Models w/ Front Bedrooms Only)	--	S*	--
• Two 30 lb Gas Bottles	S	S	S
• Molded Bottle Cover	S	S	S
• Surface Coated Steel I-Beam Frame	S	S	S
• Reese Revolution Hitch	--	--	S
• Power Front Jack	O	O	S



MODELS	W	SUL TT	SUL FW
• Stabilizer Jacks	S	S	S
• Power Stabilizer Jacks	O	O	S
• Torsion Axle, Rubber-Ryde Suspension	S	S	S
• Easy Lube Axles	S	S	S
• 15" Tires With Triple Step	S	S	S
• Aluminum Wheels	S	S	S
• Spare Tire Carrier & Cover	S	S	S
• Enclosed Holding Tanks	S	S	S
• Electronically Controlled Heated Holding Tanks	S	S	S
• Black Water Flush	S	S	S
CONVENIENCE PACKAGE "D" INCLUDES:	SO	--	--
• 13,500 BTU Ducted Air			
• Upgraded 22" Gas Oven			
• Microwave			
• 110 DSI Gas/Electric Six Gallon "Quick Recovery"			
• Water Heater			
• Residential Serta Mattress Upgrade			
• Fiberglass Exterior With High Gloss Finish			
• Power Awning With Adjustable Rain Dump			
• Windows w/ Tinted Safety Glass			
• Outside Speakers			
• Aluminum Wheels			
• Spare Tire Carrier & Cover			
CONVENIENCE PACKAGE "E" INCLUDES:	--	SO	--
• 13,500 BTU Ducted Air			
• Microwave			
• Residential Serta Mattress Upgrade			
• Fiberglass Exterior With High Gloss Finish			
• Power Awning With Adjustable Rain Dump			
• Windows w/ Tinted Safety Glass			
• Outside Speakers			
• Aluminum Wheels			
• Spare Tire Carrier & Cover			
• Deluxe TPO High Gloss Front Cap			



MODELS	W	SUL TT	SUL FW
CONVENIENCE PACKAGE "F" INCLUDES:	--	--	SO
• 13,500 BTU Ducted Air			
• Microwave			
• Residential Serta Mattress Upgrade			
• Fiberglass Exterior With High Gloss Finish			
• Power Awning With Adjustable Rain Dump			
• Windows w/ Tinted Safety Glass			
• Outside Speakers			
• Aluminum Wheels			
• Spare Tire Carrier & Cover			
• Power Stabilizer Jacks			
DIAMOND PACKAGE INCLUDES:	O	O	O
• Upgraded Decorative Slide Out Fascia			
• Upgraded Cabinetry Hardware			
• Upgraded Air Hide-A-Bed "Tufted" Sofa w/ Storage (N/A w/ 2102W, 2609W, 2809W, 8329SS, 8244WS, 8260WS)			
• Deluxe Interior Window Treatment			
• Solid Surface Corian Counter Tops in Kitchen/Living Room			
• Laminated Taupe Color Fiberglass Sidewalls With High Gloss Finish and Color Keyed Roof			
• Shielded Awning Covers			
• Tinted Bonded Frameless Windows			
• Slam Latches on Most Exterior Storage Doors			
PLATINUM PACKAGE INCLUDES:	O	O	O
• Upgraded Decorative Slide Out Fascia			
• Upgraded Cabinet Hardware			
• Upgrade Air Hide-A-Bed "Tufted" Sofa w/ Storage (N/A w/ 2102W, 2609W, 2809W, 3025W, 8329SS, 8244WS, 8260WS, 8282WS)			
• Deluxe Interior Window Treatment			
• Solid Surface Corian Counter Tops in Kitchen/Living Room			
• Tinted Bonded Frameless Windows			



PRE-DELIVERY INSPECTION FACILITY

20,000 square feet of quality assurance. The bare essentials for a premium product. This state-of-the-art facility gives immediate daily feedback to production for quality assurance in every unit built.



Forest River, Inc. encourages our customers to purchase their Forest River products from a local dealership whenever possible for the following reasons:

- 1) Forest River, Inc. dealers are independently owned and operated businesses so priority service and scheduling is at their discretion and is often provided to customers that purchased their unit at that dealership.
- 2) Purchasing locally allows customers to establish meaningful relationships with a dealer, enhancing the RV experience through assistance with product questions, user tips or RV regulations for your state or country, and much more!
- 3) Canadian customers must meet requirements to bring an RV purchased out of the country to their home. These requirements may involve additional inspections and certifications, taxes and fees. Your local Canadian Dealer is a professional at meeting these requirements.
- 4) Scheduling timely warranty repairs and adjustments through a local dealership provides far greater flexibility and convenience to you, the customer!

It is the goal of Forest River, Inc. that all of our RV owners fully enjoy the RV experience and that customer satisfaction meets or exceeds their expectations!



ROCKWOOD

WARRANTY

For details on Rockwood's complete warranty program, see your Rockwood dealer. When it comes to backing products with the same quality and commitment it has when it begins the manufacturing process, the only name you have to remember when you're looking for a recreational vehicle is Rockwood. Rockwood offers the following additional limited warranties to the original purchasers. Consult written warranty for details.

1. Twelve-year vinyl roof warranty, 2. Two-year fiberglass warranty, 3. Five-year axle warranty, 4. One-year bumper to bumper, 5. Available second-year warranty.

YOUR ROCKWOOD DEALER

201 West Elm Millersburg, IN 46543 | www.forestriverinc.com/rockwood
574.642.2640



Learn More
Scan this barcode using a QR Reader on your smart phone to learn more about Forest River.



A Berkshire Hathaway company.

All specifications contained herein are based on the latest product information at time of printing. Forest River reserves the right to make changes in colors, materials, equipment and specifications at any time without notice and assumes no responsibility for any errors in this brochure. Litho. U.S.A 2012.09.26

24/7 EMERGENCY ROADSIDE ASSISTANCE

For a worry-free ownership experience Forest River includes one year of Coach-Net RV Technical & Roadside Assistance with each RV purchase. Whether new to the RV lifestyle or an experienced RV enthusiast, Forest River owners have 24/7 access to technical, operational and emergency road service coverage throughout the US & Canada. Coach-Net's fast, dependable service is just a phone call away.

Coach-Net®
RV Technical & Roadside Assistance

