



PINNACLE™



PINNACLE

2
YEAR
WARRANTY





#LETSJAYCO

Where do you want to go? With Jayco, you're headed straight for family fun—regardless of the destination. From wooded campgrounds to sandy beaches, swimming hole docks to scenic byways, maximize the moment with unmatched quality and added comfort. So what are you waiting for? Make new memories—and share them with the world.

GENERATIONS OF FAMILY FUN

MORE THAN 40 YEARS OF ENGINEERING, LISTENING, LEARNING AND EVOLVING

Jayco has been building fifth wheels for nearly a half-century—and Luxury Fifth Wheels for almost 30 years.

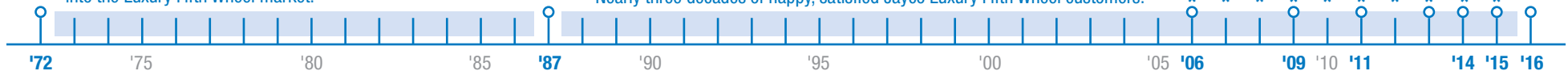


★ DSI award win

Jayco has been awarded the prestigious RVDA DSI Quality Circle Award for nine years running, winning over 75 awards across all of its product lines. The award, based on a survey of hundreds of RV dealers in the U.S. and Canada, takes into account product quality, value, service/support and more.

15 years of engineering and development experiences led us into the Luxury Fifth Wheel market.

Nearly three decades of happy, satisfied Jayco Luxury Fifth Wheel customers.



1972 Jayco introduces its first fifth wheel, the Wonderland

1987 Jayco introduces its first Luxury Fifth Wheel, the Designer

2006 Jayco fifth wheels win a DSI award—and we've won it every year since

2009 Engineering breakthroughs: Jayco introduces a drop-frame design and wide-stance landing gear

2011 Jayco introduces the Pinnacle line, which raises the bar in the Luxury Fifth Wheel market

2014 Jayco debuts the 375BHFS Eagle Premier, a SuperSlide bunk model that overtakes the luxury market

2015 Pinnacle undergoes a major redesign, including the addition of cherry cabinetry, 36-inch-wide showers and a residential refrigerator

2016 The Designer is reborn, raising the bar again in the luxury market

PINNACLE

LIVE THE LEGACY

When Jayco founder Lloyd Bontrager set out to build a better camping trailer nearly 50 years ago, he probably couldn't have imagined the lavish craftsmanship, awe-inspiring floorplans and stunning residential amenities we'd accomplish years later. Today, his legacy of excellence lives on—with Luxury Fifth Wheels that are as plush as they come.

JAYCO'S ALL-SEASONS CAMPING PACKAGE

Longer camping seasons mean more fun and more memories. That's why we build our Luxury Fifth Wheels with a blend of enhanced features that keep you and yours comfortable regardless of your camping plans. Simply put, we make it easier for you to camp more.



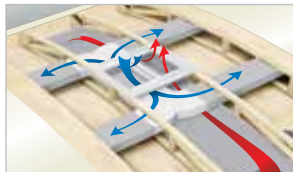
Jayco Climate Shield™

Your trailer stays comfy and functional, even in extreme temperatures, thanks to a fully enclosed and heated underbelly, double-sided Flexfoil® insulation, G20 dark-tinted windows and durable PEX plumbing. See more on page 11.



Magnum Truss™ XL6 Roof System

The strongest roof available on an RV also features a unique design that allows more room for insulation to keep you cozy during chilly nights and cool on the steamiest summer days.



Helix Cooling System

Curved ducts and a residential air return system keep conditioned air moving efficiently when you need it most.



Jayco Luxury Sleep System

You'll sleep like a baby in any kind of weather on your Simmons® residential foam-top mattress.



Magnum Frame System

Extra wide steel beams and added support in the cargo, upper deck and hitch areas make for one of the most stable foundations in the industry.



Tuff-Shell™ Sidewalls

Vacuum-bonded, laminated side, front and rear walls stand up to the elements.



Electric Fireplace

Flip the switch and forget all about any unseasonably cool weather outside.



Full-Timer Kitchen Storage

Spacious and convenient storage helps keep you equipped for cooking and dining al fresco or in the comfort of your luxurious trailer.

HERE'S WHY WE CAN OFFER THE INDUSTRY'S LONGEST WARRANTY

From concept to completion, every step of the way, we pay the closest attention to the little things that make our RVs stronger, more durable and more reliable than the competition. It's the reason that, with support from our select partners, we have you covered for **2 camping seasons**. That's **730 days**—no strings attached. So go explore. We have the warranty that will follow you anywhere.



4 INDULGE AND IMPRESS

Premium features come standard, thanks to our Luxury Fifth Wheel and Pinnacle Advantage packages. They're the apex of towable comfort—where opulence meets unbeatable value.

Luxury Fifth Wheel Package:

- 6-point electric auto-leveling system (1)
- Carefree® power awning with Flex Guard fabric shield and LED light strip (2)
- Magnum Truss™ XL6 Roof System (3)
- Helix Cooling System with Whisper Quiet technology (4)
- Full-timer kitchen storage (5)
- Indoor/outdoor central vacuum system with kick pan (6)
- Magnum Frame System (7)
- Quad-tread aluminum entrance steps (8)
- Franklin™ American-made residential furniture (9)
- Backup camera prep
- Bluetooth®/HDMI® high-output entertainment system
- Cargo accessory receiver
- Electric, thermostat-controlled fireplace
- Keyless main entrance door
- LED exterior lighting
- MOR/ryde® pin box
- Oversized battery compartment
- Painted gelcoat fiberglass front cap
- Power kitchen vent with wall controls
- Sidewall- and roof-mounted solar prep
- Whole-coach water purification system



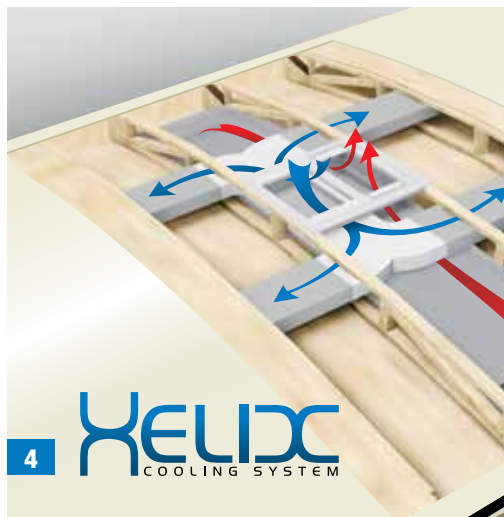
1



2



3



4



5



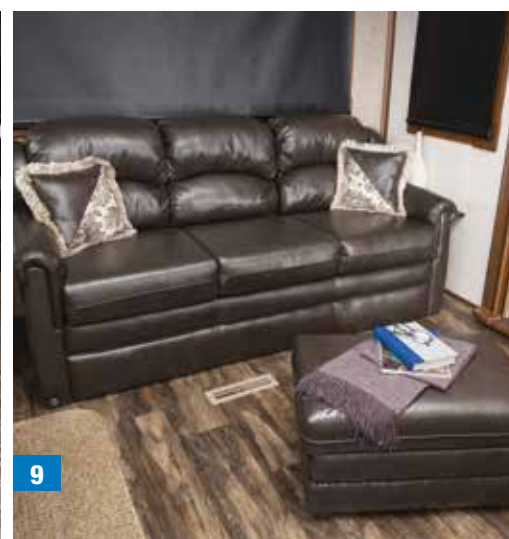
6



7



8



9



Pinnacle Advantage Package:

MOR/ryde® LRE4000™ suspension system with wet-bolt fasteners (1)

Dual sun shade and blackout roller shades in living room (2)

Gel 360 front cap, rear cap and sidewalls (all gelcoat fiberglass) (3)

Oversized 36-inch-wide residential showers (4)

Powered 50-amp cord reel (5)

Residential natural cherry hardwood cabinet doors, miter-cut with 3-inch cabinet door frames (6)

Big-screen LED HDTVs in living areas

Jayco Luxury Sleep System with Simmons® residential foam-top mattress

32-inch LED HDTV with integrated DVD player in bedroom

Sliding, freestanding table with 2 dinette chairs and 2 folding chairs

Stainless steel convection microwave oven

Remote control system for levelers, awnings, slideout rooms and exterior lights

Blackout roller shades in bedroom

Wood mantle fireplace surround with hidden storage and pullout drawer





36KPTS | HAZEL



36KPTS | HAZEL



36FBTS STORAGE/PROPANE TANK COMPARTMENT SHOWN WITH GENERATOR PREP OPTION



36FBTS HIDE-A-BED



36FBTS HIDE-A-BED (OPEN)



36FBTS THEATER SEATING



36FBTS | MOCHA



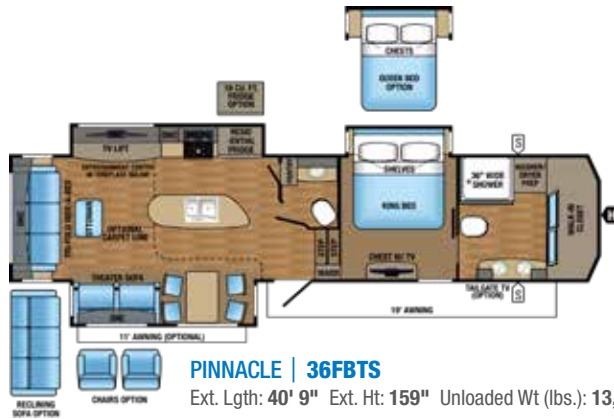
36FBTS KITCHEN BACKSLASH



36FBTS BATHROOM

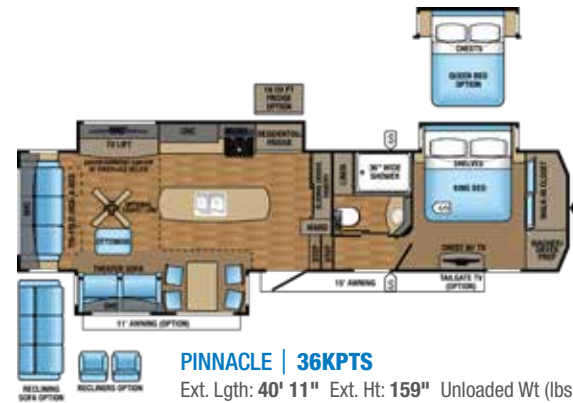


36FBTS BATH SKYLIGHT



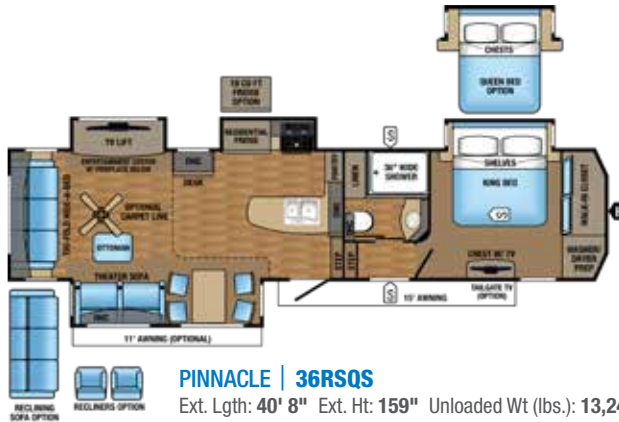
PINNACLE | 36FBTS

Ext. Lgth: 40' 9" Ext. Ht: 159" Unloaded Wt (lbs.): 13,500 Sleeps: 3-4



PINNACLE | 36KPTS

Ext. Lgth: 40' 11" Ext. Ht: 159" Unloaded Wt (lbs.): 13,295 Sleeps: 3-4



PINNACLE | 36RSQS

Ext. Lgth: 40' 8" Ext. Ht: 159" Unloaded Wt (lbs.): 13,240 Sleeps: 3-4



PINNACLE | 37MDQS

Ext. Lgth: 41' 8" Ext. Ht: 159" Unloaded Wt (lbs.): 14,150 Sleeps: 7-8

SPECS

| MODELS | DIMENSIONS | | | | | | WEIGHT (LBS.) | | | | TANKS (GALS.) | | |
|-----------|-----------------------|-------------------------|----------------|----------------------------|---|------------------------------|-------------------------|------------------|-----------------------------|-------------------------|--|-----------------------------|----------------------------|
| FLOORPLAN | TOTAL EXTERIOR LENGTH | EXTERIOR TRAVEL LENGTH* | EXTERIOR WIDTH | EXTERIOR HEIGHT (WITH A/C) | EXTERIOR HEIGHT (WITH OPT. BEDROOM A/C) | INTERIOR HEIGHT (UPPER DECK) | UNLOADED VEHICLE WEIGHT | DRY HITCH WEIGHT | GROSS VEHICLE WEIGHT RATING | CARGO CARRYING CAPACITY | FRESH WATER CAPACITY (INCLUDES WATER HEATER) | GREY WASTE WATER CAPACITY** | BLACK WASTE WATER CAPACITY |
| 36FBTS | 40' 9" | 39' 4" | 102" | 159" | 161" | 83" | 13,500 | 2,735 | 16,500 | 3,000 | 85 | 87 | 87 |
| 36KPTS | 40' 11" | 39' 6" | 102" | 159" | 161" | 83" | 13,295 | 2,735 | 16,500 | 3,205 | 85 | 87 | 50 |
| 36RSQS | 40' 8" | 39' 3" | 102" | 159" | 161" | 83" | 13,240 | 2,875 | 16,500 | 3,260 | 85 | 85 | 50 |
| 37MDQS | 41' 8" | 40' 6" | 102" | 159" | 159" | 83" | 14,150 | 3,130 | 16,995 | 2,845 | 85 | 85 | 50 |
| 38FLSA | 42' 2" | 40' 8" | 102" | 161" | 161" | 83" | 13,740 | 3,115 | 16,995 | 3,255 | 85 | 107 | 37 |
| 38REFS | 43' 1" | 41' 7" | 102" | 160" | 160" | 83" | 13,990 | 2,635 | 16,995 | 3,005 | 85 | 87 | 50 |
| 39SPQS | 44' 5" | 42' 11" | 102" | 159" | 161" | 83" | 14,325 | 2,675 | 16,995 | 2,670 | 85 | 87 | 50 |

It is important for your safety and enjoyment that your tow vehicle be adequately sized and equipped to tow and handle the GVWR of the RV you select. Review weights and rating of your tow vehicle and consult a competent advisor for questions or advice. Whether you are new to RVing or a veteran, get a feel for the performance of your tow vehicle before heading out on the roadways. When you tow an RV, you must drive differently than when you drive a single vehicle. Practice hooking up, driving, backing up and braking in a safe environment or seek out professional instruction. Jayco affixes a weight label to each RV which lists weight information for that vehicle. See specifications chart above.

*Distance from the pin box to the bumper; total exterior length may be longer

**Split Tank

Unloaded Vehicle Weight (UVW): Sometimes referred to as "Dry Weight," UVW means the typical weight of this trailer as built at the factory. The UVW, as used in product literature and other promotional materials, does not include cargo, fresh water, propane, options or dealer-installed accessories.

Gross Vehicle Weight Rating (GVWR): GVWR means the maximum permissible weight of the trailer, including the UVW plus passengers, personal items, all cargo, fluids, options and dealer-installed accessories. The GVWR is equal to or greater than the sum of the UVW and the CCC.

Cargo Carrying Capacity (CCC): CCC means the maximum weight of all passengers, personal items, food, fresh water, propane, tools, other cargo and dealer-installed accessories that can be carried by the trailer. CCC is equal to or less than GVWR minus UVW. The addition of options will decrease the CCC.

Hitch Weight (HW): The hitch weight, as used in product literature and other promotional materials, does not include cargo, fresh water, propane gas, options or dealer-installed accessories. The addition of these types of items will either add to or subtract from the stated hitch weight.



PINNACLE | 38FLSA

Ext. Lgth: 42' 2" Ext. Ht: 161" Unloaded Wt (lbs.): 13,740 Sleeps: 6



PINNACLE | 38REFS

Ext. Lgth: 43' 1" Ext. Ht: 160" Unloaded Wt (lbs.): 13,990 Sleeps: 6



PINNACLE | 39SPQS

Ext. Lgth: 44' 5" Ext. Ht: 159" Unloaded Wt (lbs.): 14,325 Sleeps: 3-4

EXTERIOR OPTIONS



STANDARD GRAPHICS



PREMIUM PAINT OPTION - BLACK MERLOT



PREMIUM PAINT OPTION - STERLING IVORY

INTERIOR DÉCOR

AUBURN



HAZEL



IVORY



MOCHA



LUXURY FIFTH WHEEL PACKAGE (mandatory)

| |
|--|
| 6-point electric auto-leveling system |
| Backup camera/monitoring system prep |
| Carefree® power awning with Flex Guard fabric shield and LED light strip |
| Indoor/outdoor central vacuum system with kick pan |
| Franklin™ American-made residential furniture |
| 12-inch Magnum Frame System |
| Magnum Truss™ XL6 Roof System |
| Helix Cooling System featuring a Jayco-exclusive duct design, exterior-mounted A/C units, directional/closable A/C vents, and larger return air vents with user-accessible filters |
| Quad-tread aluminum entrance steps |
| Bluetooth®/HDMI® high-output entertainment system |
| Cargo accessory receiver |
| Electric, thermostat-controlled fireplace |
| Keyless main entrance door |
| LED exterior lighting |
| MOR/ryde® pin box |
| Oversized battery compartment |
| Fully painted and clear-coated front cap |
| Power kitchen vent with wall controls and rain sensor |
| Sidewall- and roof-mounted solar prep |
| Whole coach water purification system |
| Full-timer kitchen storage system |

PINNACLE ADVANTAGE PACKAGE (mandatory)

| |
|---|
| MOR/ryde® LRE4000™ suspension system with wet-bolt fasteners |
| Gel 360 front cap, rear cap and sidewalls (all gelcoat fiberglass) |
| Big-screen LED HDTVs in living room |
| Jayco Luxury Sleep System with Simmons® residential foam-top mattress |
| Dual sun shade and blackout roller shades in living room |
| 32-inch LED HDTV with integrated DVD player in bedroom |
| Residential natural cherry hardwood cabinet doors, miter-cut with 3-inch rails |
| Oversized 36-inch-wide residential showers |
| Powered 50-amp cord reel |
| Sliding, freestanding table with 2 dinette chairs and 2 folding chairs |
| Stainless steel convection microwave oven |
| Remote control system for levelers, awnings, slideout rooms and exterior lights |
| Blackout roller shades in bedroom |
| Wood mantle fireplace surround with hidden storage and pullout drawer |

CUSTOMER VALUE PACKAGE (mandatory)

| |
|---|
| 15,000-BTU central A/C |
| Arched interior ceiling with 82-inch upper deck interior height |
| Bath skylight |
| Bathroom power vent |
| Bedsread |
| Under-bed floor safe |
| Oversized folding exterior grab handle |
| Frameless G20 dark-tinted windows |
| LED interior lighting |
| Security lights |
| Slam-latch™ baggage doors with strut assist |
| Sofa and bed pillows |
| Solid-surface kitchen countertops |
| Keyed-Alike™ exterior doors locking system |

STANDARD EXTERIOR EQUIPMENT

| |
|--|
| Wide-body, 102-inch frame |
| Wide-stance front landing gear |
| TuffShell™ vacuum-bonded, laminated walls |
| Climate Shield™: |
| <ul style="list-style-type: none"> • Enclosed, insulated, heated underbelly • High-BTU-output furnace (40,000-BTU) • Astro-Foil™ in roof and floors |
| Aerodynamic front and rear cap with LED lights |
| Seamless composite roof covering |
| 12-inch I-class cambered structural steel I-beams |
| 16-inch radial tires |
| 7,000-pound axles |
| Completely enclosed and protected slideout mechanisms |
| Frameless, dark-tinted, safety-glass windows |
| 30-inch x 78-inch entry door with oversized window |
| Screen door with kick plate |
| Exterior marine-grade speakers (2) |
| Convenience outlet located on front awning arm |
| Expansiview opera-style dining area windows |
| Enclosed, protected basement drop-frame |
| Cable TV and outlet in basement |
| Convenient dual propane compartment (60-pound capacity) on off-doorside |
| Doorside compartment framed and vented for third propane bottle |
| Stor-Galore™ pass-through basement storage |
| Heated, enclosed Uni-Dock™ utility center |
| 50-amp power service |
| 75-gallon fresh water tank |
| 50-gallon black tank capacity minimum (n/a on 38FLSA) |
| Cable/satellite TV prep |

| |
|--|
| Digital TV antenna |
| Outside grill prep |
| Under-mounted spare tire |
| Roof ladder |
| Hitch light |
| Upper deck slideout convenience light |
| EZ-Cord™ cargo area extension cord access port |
| Cargo area storage system (select models) |

STANDARD INTERIOR EQUIPMENT

| |
|---|
| Custom residential miter-cut cherry cabinet doors with hidden hinges |
| Hardwood cherry cabinet stiles |
| Hardwood slideout fascia |
| Residential-style pantry with pullout drawers |
| Steel ball-bearing drawer guides, 75-pound capacity with full extension |
| Large, split, under-mounted, stainless steel sink |
| Residential-grade, pullout kitchen faucet |
| Water heater bypass |
| 23-cubic-foot residential refrigerator with water/ice in door |
| 1,000-watt inverter |
| Flush-mounted, oversized, 21-inch oven with recessed glass cover |
| Residential-grade wood-plank vinyl flooring |
| Shaw® R2X® stain-resistant residential carpeting |
| Night-light toe kick lighting in bedroom, bathroom and kitchen |
| 90-amp power center with Charge Wizard® |
| Backlit command center for switches |
| Closeable and directional A/C vents |
| Prep for second A/C – prewired and tied into main ducting |
| Prep for third A/C – prewired |
| Tri-fold hide-a-bed sofas with ottoman |
| Ceiling fan (n/a on 38FLSA) |
| Hardwood ceiling mantle with pendant lighting |
| LED ceiling lights throughout |
| 78-inch height in living area slideout rooms |
| Porcelain bath stool with foot flush |
| Under-mounted stainless steel bathroom sink |
| Utility hooks in bathroom |
| Oversized 34-inch skylight above shower |
| Hardwood headboard |
| Full-trunk, under-bed storage |
| Walk-in-style front closet with dual hanging rods and cedar lining |
| Mullion-style front wardrobe doors |
| Washer/dryer prep (accommodates stackable unit) |
| Oversized bedroom dresser storage |
| Bedroom slide fascia built-in nightstand storage system |

OPTIONS

| |
|--|
| Customer Value Package with heat pump |
| 18-cubic-foot, gas/electric refrigerator with ice maker |
| Simmons BeautySleep® 60-inch x 80-inch queen residential foam-top mattress |
| Carpet in the main living area (n/a on 38FLSA) |
| Reclining main sofa (n/a on 38FLSA) |
| Two recliners in lieu of theater seats (select models) |
| Wireless backup camera/monitoring system |
| 39-inch LED tailgate TV in cargo area on sliding bracket |
| G-rated Goodyear® tires and rims (16-inch) |
| Second 15,000-BTU A/C (low-profile) in bedroom, tied into dual-duct system |
| Third 15,000-BTU A/C (low-profile) in front living room (38FLSA) |
| Generator prep |
| 5,500-watt generator |
| Black Merlot Premium full cut-and-buff exterior paint package |
| Sterling Ivory Premium full cut-and-buff exterior paint package |
| Dual-pane, tinted safety-glass windows |
| Second power awning (n/a on 38FLSA, 39SPQS) |
| Slideout awning covers |
| Outside gas grill |
| On-demand tankless water heater system |
| MOR/ryde cargo area storage tray |
| 2 additional dinette chairs |
| Sani-Con® sewer macerator pump system |

MAKING MEMORIES

THAT LAST GENERATIONS—LET'S JAYCO



THE JAYCO DIFFERENCE

1. **Vacuum-bonded walls and Gel 360, premium gelcoat fiberglass exteriors** for better protection from the elements
2. **Magnum Truss XL6 Roof System** withstands 4,500 pounds—50 percent more than other roofs
3. **Welded aluminum frame** for a durable, lightweight structure
4. **Double layer of fiberglass insulation** behind the front cap, plus Flexfoil® and fiberglass insulation in the floor to provide extra warmth where it's needed most—in the bedroom
5. **Painted gelcoat fiberglass front cap** withstands the rigors of the road with infused paint and gel coating, plus 1/4-inch plywood bracing for additional support—not typically found on competing fifth wheels

Whether you're out for excitement, relaxation or just time together, we take steps others don't to help you stay focused on the fun. No cutting corners here. Let us go the extra mile so you don't have to.

6. **MOR/ryde LRE4000 rubberized suspension system** provides smoother towing and better protection from damaging road shock
7. **Helix Cooling System with Whisper Quiet technology**
8. **6-point electric leveling system**
9. **Carefree power awning** with Flex Guard fabric shield
10. **Quad-tread aluminum entrance steps**
11. **Keyless main entrance door**
12. **Cargo accessory receiver**
13. **Sidewall- and roof-mounted solar prep**
14. **Magnum Frame System**
15. **MOR/ryde pin box**



JAYCO'S ROOF **VS** OTHER ROOFS



4,500 POUNDS ON A JAYCO ROOF VS. OTHER ROOFS

THE MAGNUM TRUSS™ XL6 ROOF SYSTEM
50 percent stronger



CLIMATE SHIELD

Extend your camping season with the Jayco Climate Shield. It protects against extreme heat and extreme freezing—even in temperatures as high as 100 degrees or as low as zero degrees (Fahrenheit).* Scan the QR code to see the Climate Shield video.

LIVING ROOM



KITCHEN



BATHROOM



HOLDING TANK



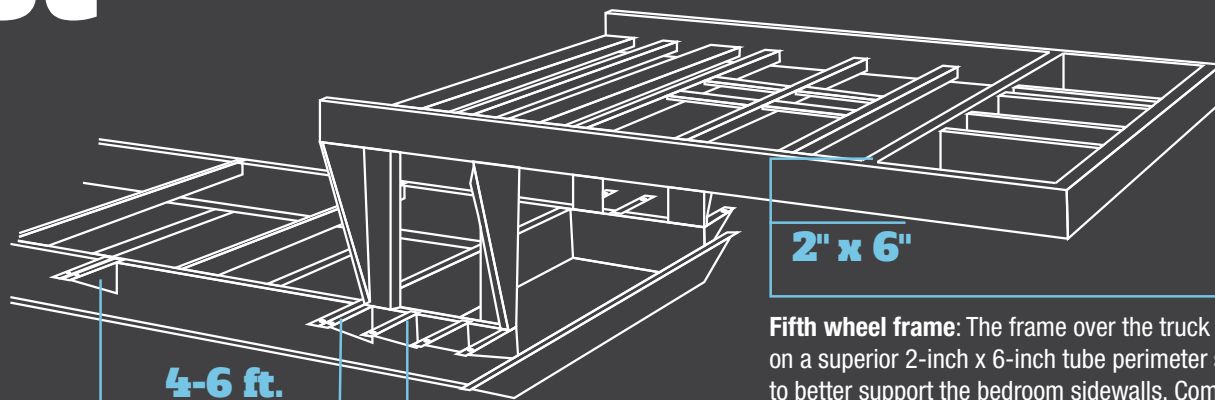
BEDROOM



*Jayco tested fifth wheels in zero degrees F and 100 degrees F weather over an extended period of time in a controlled environment, and all functions of the coach were fully operational. Testing was done in a completely controlled environment; therefore, temperatures during testing may not represent actual temperatures in nature and cannot account for elements such as wind or moisture. In actual use, unit may not perform as well. Supplier of cooling components does not guarantee anything better than 20 degrees difference from ambient temperature. In addition, outside components are subject to freezing and require steps to properly insulate. Jayco's limited warranty does not cover damage caused by freezing. To learn more about Climate Shield and testing done by Jayco, visit www.jayco.com.

WE START WITH ONE OF THE INDUSTRY'S **strongest** foundations

Full-width outriggers: We build on full-width outriggers that are spaced 4-6 feet apart (vs. 8 feet) to better support the weight of the wall.



I-class cambered structural steel I-beams: Jayco uses a unique molded, one-piece design to prevent unit from twisting; competing three-piece I-beams can warp over time at the welded seams.

Many competitors modify or weld stock frames, which can weaken the integrity of your foundation. Jayco's custom-manufactured frames offer higher strength and durability.

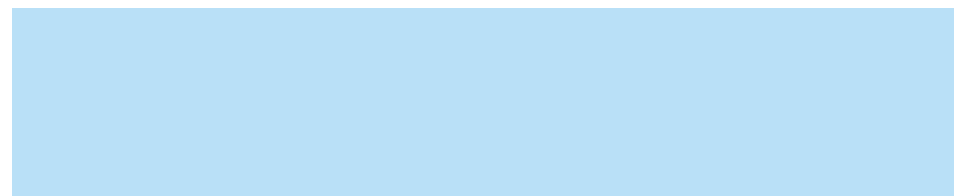
2" x 6"

Fifth wheel frame: The frame over the truck bed is built on a superior 2-inch x 6-inch tube perimeter structure to better support the bedroom sidewalls. Competing fifth wheels have a smaller frame; these manufacturers add a sidewall support seam to compensate for expansion joints.

Learn more at StrongFoundation.Jayco.com



Meet your Jayco Dealer



We work hard—so you can play hard. From finding the perfect Jayco for your family to providing flexible financing options and full-service support, we're here to help.

Follow Jayco



Jayco, Inc., P.O. Box 460, Middlebury, IN 46540, www.jayco.com



See dealer for further information and prices. All information in this brochure is the latest available at the time of publication approval. Jayco reserves the right to make changes and to discontinue models without notice or obligation. Photos in this brochure may show optional equipment and props for photography purposes. RVs built for sale in Canada may differ to conform to Canadian codes. ©2016 Jayco, Inc. 274740 0716-55K Printed in U.S.A.

Travel with Confidence

2
YEAR
WARRANTY

At Jayco, we build our RVs to handle every adventure, then back them with our industry-leading 2-year limited warranty. We, with support from our select partners, have you covered for **2 camping seasons**. That's **730 days**. You won't find a better warranty in the business, because the only strings we attach are those that deliver the ultimate in reliability. That's the Jayco difference. So go explore. We have the warranty that will follow you anywhere. For a copy of our 2-year limited warranty with complete terms and conditions, please contact your local Jayco dealer.

FREE

ROADSIDE
ASSISTANCE

A year's access to Coach-Net™—the country's largest RV emergency road service.



eco advantage™

Jayco's long-term commitment to generations of family fun

After five years of increased efforts to eliminate waste, conserve energy and increase recycling, we've come a long way in building RVs that are not only better for your family—but also better for the planet.

Learn more at Jayco.com/EcoAdvantage