

MORE >>> Go see more details on construction, features & benefits at: [crossroadsrv.com/hampton](http://crossroadsrv.com/hampton)

**CROSSROADS®**  
RECREATIONAL VEHICLES



YOUR LOCAL CROSSROADS DEALER:

305 HAWPATCH DRIVE 🌀 TOPEKA, IN 46571 🌀 PH 260 593-3850 🌀 FX 260 593-2088







*Hampton*  
BY CROSSROADS





HT380QB Living Space in Cocoa Cherry Wood/Margarita Decor



HT380QB Master Bedroom



Cocoa Cherry Flooring





HT380QB Master Bathroom



Dinette Table

## QUALITY CONSTRUCTION IS PEACE OF MIND

A get-away is great, but home is more than a place. Home is peace of mind. That's what Hampton offers.



We know peace of mind is valuable. The Hampton was designed with your comfort in mind. We thought of everything from upgrading the insulation for your comfort, to a one-piece molded front cap for extra durability, to enclosing the underbelly to seal the floor. We made your home better.



SHOULDN'T  
YOUR WEEKEND  
BE BOTH  
BEAUTIFUL AND  
COMFORTABLE?

Stainless Steel Appliances

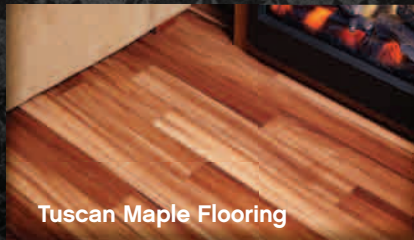




Armoire and Deluxe Closet



HT400FL Kitchen



Tuscan Maple Flooring



## ALL THE COMFORTS OF HOME

A place for everything and everything in its place is an old adage. We've made it true for the Hampton.



- ◀◀◀ In the bedroom, the closet is designed for the space needs of extended stays, with an additional armoire for functional storage.
- ◀◀◀ In the kitchen, beautiful stainless steel appliances are on display, while the ample pantries are concealed.
- ◀◀◀ In the bathroom, the shower is a generous 48" and designed with molded shelves for your convenience.

Home is a reflection of you. Shouldn't it be filled with timeless quality and comfort?



48" One-piece Shower





HT400FL Living Space in Tuscan Maple Wood/Autumn Decor



HT400FL Dining Area



Master Bedroom in Autumn Decor

STYLE,  
CONVENIENCE  
AND PEACE  
OF MIND ARE  
DESIGNED  
INTO EVERY  
HAMPTON UNIT.



# STANDARDS & OPTIONS >>>

## LIVING ROOM STANDARD FEATURES

- Exterior cable with satellite hookup & booster
- 8' from floor to ceiling height
- 7' headroom in slide-outs
- Wood mini blinds
- Two toned wood fascia
- Oil-rubbed accent lighting
- Swivel glider recliner (varies by model)
- DVD with complete surround sound system
- Two décor choices
- TV antenna with cable input
- Fireplace
- 32" HD LCD TV

- Living room hide-a-bed sofa inner spring mattress

- Patio door with swing-out assist rail

## KITCHEN STANDARD FEATURES

- Stainless steel appliances: 18 cu ft. fridge with icemaker; 24" range & 22" microwave
- Raised panel cabinet doors
- Deep stainless steel sink
- Faucet with pull-out sprayer
- Residential overhead cabinets with halogen lighting
- Freestanding table & chairs
- Full extension ball bearing drawer guides

## BEDROOM STANDARD FEATURES

- Upholstered headboard
- Armoire
- TV hook-up
- Deluxe closet
- Coordinated window treatments and bedspread
- Bedroom speakers
- 60" x 80" Residential mattress
- Living room and bedroom ceiling fan

- Corner shower with one-piece surround (varies by model)

- Porcelain toilet
- Linen storage
- Lighted, mirrored medicine cabinet
- Washer/dryer hook up (varies by model)
- Fantastic fan with rain sensor

## EXTERIOR STANDARD FEATURES

- Tinted glass windows
- 18' Patio awning
- Exterior speakers
- Outside shower

## BATHROOM STANDARD FEATURES

- Large satin-finish lavatory bowl
- 48" one piece fiberglass tub (varies by model)

## SPECS

ALL SPECIFICATIONS SUBJECT TO CHANGE WITHOUT NOTICE.



## SPECIFICATIONS

DRY WEIGHT	9850
GVWR	13426
CARRYING CAPACITY	3576
HITCH WEIGHT	1426
AXLE WEIGHT	8424
EXTERIOR LENGTH	38' 0"
EXTERIOR HEIGHT W/ A/C	12' 8"

## HT350FK

9850
13426
3576
1426
8424
38' 0"
12' 8"

## HT360FL

10094
13164
3070
1164
8930
40' 11"
12' 8"

## HT380CK

11556
13910
2354
1910
9422
40' 11"
12' 8"

## HT380DB

11324
13176
1852
1176
9770
40' 11"
12' 8"

## TANKS

FRESH WATER CAPACITY: 56 GALLONS / BLACK WATER CAPACITY: 40 GALLONS / GREY/GALLEY CAPACITY: 80 GALLONS

## CONSTRUCTION STANDARD FEATURES

- 50 Amp service
- One piece radius rubber roof with 12-year manufacturer's warranty
- 3/8" roof decking
- 16" OC truss rafters with 4-1/2" crown
- Fiberglass roof & floor insulation
- Rain gutters along entire roof line
- 15,000 BTU ducted A/C wired & prepped for second A/C in master bedroom

- 40,000 BTU floor ducted furnace
- 16" OC stud spacing in sidewalls, end-walls & slide-outs
- 5/8" tongue and groove plywood floor decking (glued & screwed)
- 1/2" Rebond rubber carpet pad
- Residential grade carpet
- 16" tires with white rims
- 60" x 76" Patio door
- 8' Interior floor width
- 3/4" No-wick slide decking
- Electric slides throughout

- Dual LP tank hookup (front and back)
- PolarTec upgrade insulation package R28, R14, R28 insulation value
- 16 gallon D.S.I gas/electric water heater
- Black tank flush
- Enclosed underbelly
- Full fiberglass front cap with recessed lighting
- Swing-out entry assist handle at second door

## POPULAR OPTIONAL FEATURES

- Fiberglass sidewalls
- Spare tire and carrier
- 13.5 A/C for bedroom
- Rain sensor fan(s)
- Rear ladder
- Insulated windows
- Solid surface counter tops
- (6) 30" Stabilizer jacks



PolarTec insulation



Reversible Main Shut-off



Family-sized Microwave



Optional Solid Surface Counters



One-piece Molded Front Cap

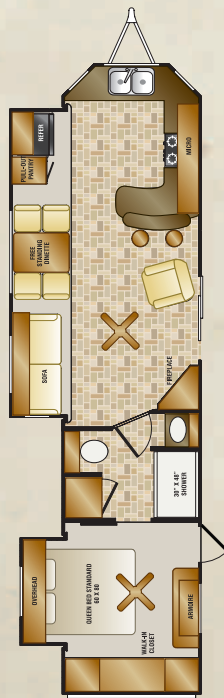


12" I-beam Construction



**HT380FD**

11602  
13872  
2270  
1872  
9730  
40' 10"  
12' 8"



**HT380FK**

10608  
13530  
2922  
1530  
9078  
40' 11"  
12' 8"



**HT380QB**

11672  
13300  
1628  
1368  
10304  
40' 11"  
12' 8"



**HT400FL**

10750  
13182  
2432  
1182  
9468  
43' 1"  
12' 8"

Go see more details at: [crossroadsrv.com/hampton](http://crossroadsrv.com/hampton)

**MORE**