

1999 SUNCRUISER®



33B

Built for those interested

If you're looking for maximum living and storage space, you've come to the right place. All seven 1999 Itasca Suncruiser models are widebodies, employing a full 8' interior width. Three Suncruiser models offer slideout rooms featuring Winnebago Industries' innovative **STOREMORE™** Hydraulic Slideout System that gives you the benefits of a slideout without sacrificing storage. And each Suncruiser is also a basement model with heated compartments for multi-season use and 12" of over-the-rail storage. So if you want a motor home that offers more comfortable living space, step inside the new Suncruiser. It's just your size.



336

The Itasca Suncruiser is more than just spacious. It's also an extremely comfortable living environment. The roof air conditioning system features routed duct work with air distribution through dampening, directional vents. All Suncruisers are designed using Winnebago Industries' exclusive "Home Comfort Design" — which means functional floorplans equipped with high-line fabrics, carpets and interior furnishings.

Suncruiser's luxurious interior can be further enhanced with available features such as a 13" color TV in the bedroom and a Mobile Theater Sound System.



376

in wide open spaces.



Rich hand-crafted woodwork and wainscoting with a chair rail combine with a comfortable Serta® mattress and beautifully coordinating fabrics to create the perfect balance of style and comfort.



37G



37G



Our available dash-integrated workstation provides the perfect place for a laptop computer. It neatly tucks away when not in use and offers storage space below.

The 37G's available combination washer/dryer, located in the wardrobe, features a new vented design, for even faster drying times.

Makeup lights, an oval sink with ledge back, and a shower with skylight and light are just a few of the bathroom's many standard features.

Galley features include abundant storage, a range with oven, a double-door refrigerator and freezer, an available microwave/convection oven and wood-edged countertops.



Suncruiser includes the innovative **POWERLINE™** Energy Management System on most models. This fully automated system has the ability to run the two high efficiency air conditioners and numerous electrical loads at the same time when utilizing 30 amp. service by monitoring the usage of 120 volt power and redistributing it as needed.

SUNCRUISER DECOR OPTIONS

All fabrics selected for use in the Suncruiser must pass a series of tests for strength and durability. For example, the double rub test mechanically simulates a person getting in and out of a seat up to 30,000 times to see how the fabrics wear.

MINT

with Waterford Oak and Washed Maple



Main
Accent
Woods
Carpet

CLOUD

with Waterford Oak and Washed Maple



CASTLETON

with Waterford Oak and Washed Maple



Main
Accent
Woods
Carpet

Our professional interior designers pride themselves on selecting color schemes and patterns that will look good for years to come. All decor options are available with either Waterford Oak or Washed Maple woodwork.

EXTERIOR VALANCE PANELS

KHAKI

WINTERGREEN



Exterior lower valance colors are Wintergreen Metallic, suggested with Castleton; and Khaki Metallic, suggested with Cloud and Mint. However, you may order either valance color, regardless of your interior choice.

We'd like to talk about our strengths.



30A

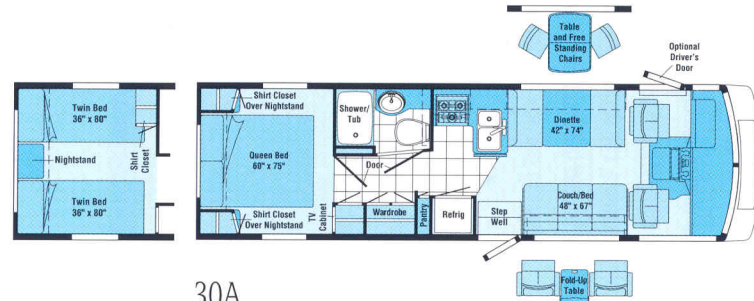
An available awning extends to provide protection from the elements and easily retracts to the aluminum awning rail when not in use. When you're relaxing outside, you can enjoy listening to your favorite music on the available exterior entertainment center which includes an AM/FM radio with cassette or CD player.



33B

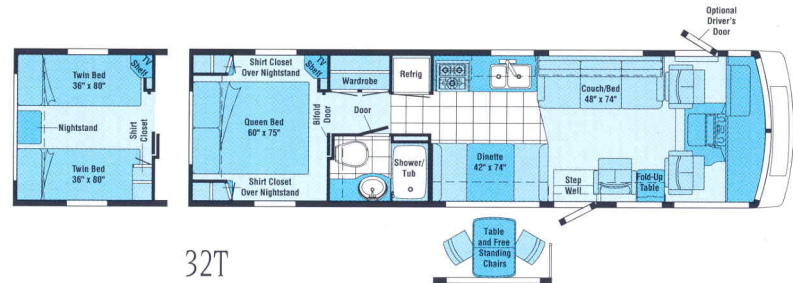
Gas struts (on most doors) and single paddle latches allow easy, one-handed opening of the large storage bays. For easy access and a lighter keychain, SunCruiser features the Tri/Mark KeyOne™ System that incorporates common-key locks for the main entry door, driver's door, storage compartments and fuel fill. And thanks to our revolutionary **STOREMORE™** technology, all basement compartments feature full-size openings — even under the slideout.

1999 SUNCRUISER FLOORPLANS



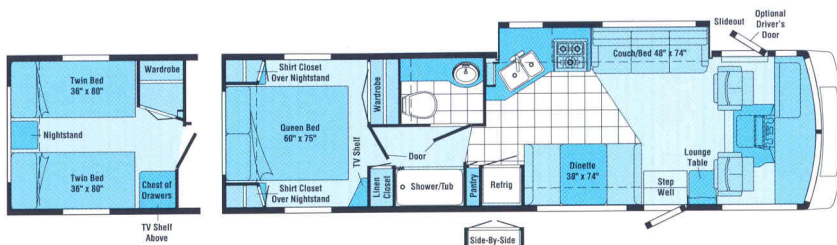
30A

Includes an L-shaped galley with pantry, private bathroom, "walk-around" queen bedroom design with a large wardrobe and the choice of several seating configurations in the living area.



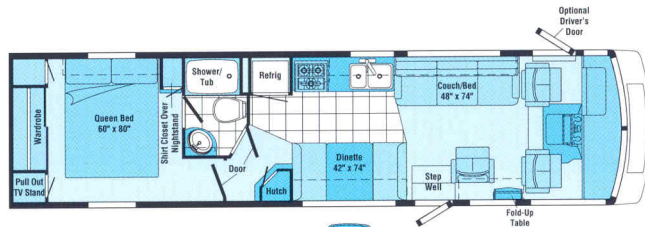
32T

A large dining area with the choice of a dinette or table and chairs, and a "walk-around" queen bedroom configuration set this popular model apart.



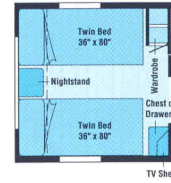
33B

Both the galley and couch extend in this slideout model. Other benefits include a large wardrobe, a pantry and a linen closet. Driver's door not available with Chevrolet chassis.



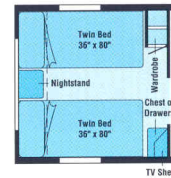
34H

Increased bedroom privacy and a private bath entrance from the bedroom are just a few of the advantages offered in this side aisle model.



35C

Choose from a dinette or table and chairs, and either a refrigerator with pantry or side-by-side refrigerator/freezer in this roomy model.

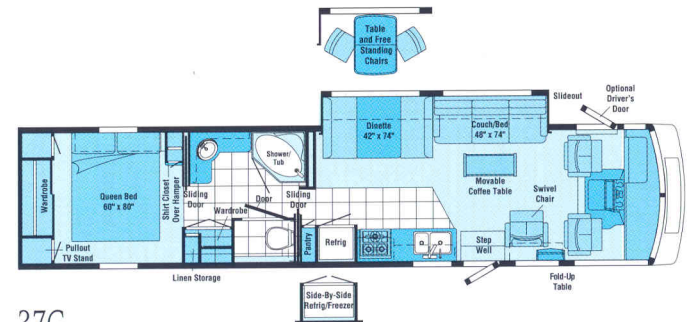
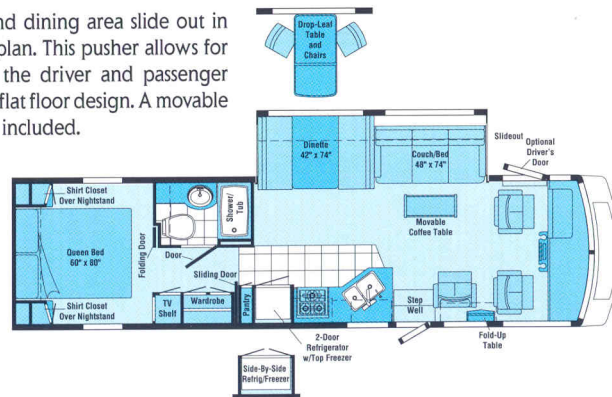


35C SLIDEOUT

All the advantages of the 35C with additional space provided by a large slideout in the living and dining areas. Slideout room in the living area also includes a movable coffee table. Driver's door not available with Chevrolet chassis.

34V-P

Both the couch and dining area slide out in this exciting floorplan. This pusher allows for easy entrance to the driver and passenger area because of its flat floor design. A movable coffee table is also included.



37G

In addition to a large slideout in the living area, our largest Sun Cruiser offers a generous wardrobe outside the bedroom and a large bath area including a shower/tub with textured glass door.



Standard
Vinyl Flooring

Note: Dimensions shown are for sleeping space only and dashed lines denote overhead storage areas.

1999 Suncruiser Specifications

	30A	32T	33B	34H	34V-P	35C	37G
Length	31'	32'7"	33'9"	35'1"	34'3"	35'3"	37'11"
Exterior Width Δ	8'5.5"	8'5.5"	8'5.5"	8'5.5"	8'5.5"	8'5.5"	8'5.5"
Interior Height	6'8"	6'8"	6'8"	6'8"	6'8"	6'8"	6'8"
Interior Width	8'0.5"	8'0.5"	8'0.5"	8'0.5"	8'0.5"	8'0.5"	8'0.5"
Fuel Capacity (gal.) - Chevrolet/Ford/Freightliner	75/75/NA	75/75/NA	75/75/NA	75/75/NA	NA/NA/90	75/75/NA	NA/75/NA
Fresh Water Capacity w/Heater	85 gal.	85 gal.	76 gal.	85 gal.	92 gal.	67 gal.	69 gal.
Holding Tank Capacity - Black/Gray	55/56 gal.	49/50 gal.	55/53 gal.	57/50 gal.	40/53 gal.	40/50 gal.	55/55 gal.
LP Capacity ∇	28 gal.	28 gal.	28 gal.	28 gal.	39 gal.	28 gal.	28 gal.
Wheelbase	190"	208"	216"	228"	228"	220" Chev./228" Ford	248"
Exterior Height w/AC - Chevrolet/Ford/Freightliner*	11'11"/11'11"/NA	11'10"/11'10"/NA	11'10"/11'11"/NA	11'9"/11'11"/NA	NA/NA/11'10"	11'6"/11'10"/NA	NA/11'11"/NA
Exterior Storage	124.5 cu. ft.	137 cu. ft.	110.9 cu. ft.	162 cu. ft.	108 cu. ft.	141.3 cu. ft.	142.2 cu. ft.
GVWR - Chevrolet	16,500 lbs.	16,500 lbs.	16,500 lbs.	16,500 lbs.	NA	16,500 lbs.	NA
GVWR - Ford	18,000 lbs.	18,000 lbs.	20,500 lbs.	20,500 lbs.	NA	20,500 lbs.	20,500 lbs.
GVWR - Freightliner	NA	NA	NA	NA	24,590 lbs.	NA	NA

AUTOMOTIVE	30A	32T	33B	34H	34V-P	35C	37G
Chassis - Chevrolet 7.4L Vortec V-8 @ 290-HP, 124-Amp. Alternator, Anti-Lock Brake System	S	S	O	S		S	
Chassis - Ford 6.8L V-10 @ 275-HP, 130-Amp. Alternator	O	O	S	O		O	S
Chassis - Freightliner Cummins ISB5.9L Turbo Diesel @ 275-HP, Engine Block Heater, Exhaust Brake Ready, 130-Amp. Alternator, Allison MT643 4-Speed Transmission, Air Brakes, Air Suspension					S		
Engine Exhaust Brake					O		
Front Shocks/Steering Stabilizer Package* Chevrolet Only	O	O		O		O	
Tires (Radial) w/Spares (Spare NA 34V-P)	S	S	S	S	S	S	S

DRIVER CONVENIENCES	30A	32T	33B	34H	34V-P	35C	37G
3-Point Retracting Seat Belts w/4-Position Adjustable D-Loop (Drv./Frt. Pass.) Seats w/Reclining High-Back Design, Hinged Armrests, Lumbar Support, Swivel/Slide Pedestal, Lap Belts in Selected Areas	S	S	S	S	S	S	S
6-Way Driver Seat*	O	O		O	O	O	O
12-V Electrical Supply/Lighter	S	S	S	S	S	S	S
Battery Charge Control Dual, Automatic	S	S	S	S	S	S	S
Battery Charger (Solar) Wiring Prep	S	S	S	S	S	S	S
Battery Charger (Solar) 10-Watt	O	O	O	O	O	O	O
Battery Disconnect Auxiliary	S	S	S	S	S	S	S
Cabinet Center Console					S		
Carpeted Floor Mats, Map Pocket(s)	S	S	S	S	S	S	S
Convenience Tray	S	S	S	S	S	S	S
Cruise Control, Start Circuit Auxiliary	S	S	S	S	S	S	S
Curtain w/Track Front Wrap-Around	S	S	S	S	S	S	S
Defroster* Fans, Aux. 2-Speed	O	O	O	O	O	O	O
Driver's Door* w/Exterior Step	O	O	O	O	O	O	O
Fog Lamps*	O	O	O	O	S	O	O
Heating/Air Conditioning	S	S	S	S	S	S	S
Hood Release Exterior Key Locks	S	S	S	S	S	S	S
Leather Seats* Driver & Passenger, Leather Insert w/Vinyl Surround	O	O	O	O	O	O	O
Map Light, Sunvisors	S	S	S	S	S	S	S
Mirrors (Rear View) Exterior, Low Mounted, Includes Convex Element	S	S	S	S	S	S	S
Mirrors (Rear View) Exterior, Low Mounted, Electric w/Remote & Defrost	O	O	O	O	O	O	O
Rear View Monitor System Cable Ready	S	S	S	S	S	S	S
Rear View Monitor System (Sony)* Video/One-Way Audio	O	O	O	O	O	O	O
Service Light Driver's Side, Exterior	S	S	S	S	S	S	S
Steering Power Assisted w/Tilt Wheel	S	S	S	S	S	S	S
Storage Cabinet (Front & Side Overheads)	S	S	S	S	S	S	S
Window Shades (2) Roller, Light Filtering	S	S	S	S	S	S	S
Windows (Driver/Passenger) Sliding, w/Screens	S	S	S	S	S	S	S
Windshield Wipers (Intermittent)	S	S	S	S	S	S	S
Work Station* Pull-Out, Pass. Side, Dash	O	O	O	O	O	O	O

ENTERTAINMENT	30A	32T	33B	34H	34V-P	35C	37G
Antenna (Radio) Roof-Mounted, Flex. Rubber	S	S	S	S	S	S	S
C.B. Prep Kit Antenna, Coax Wiring, 12-V Power Connection	O	O	O	O	O	O	O
Entertainment Center (Patio)* DC Receptacle, 110-V Outlet, TV Jack, Radio Antenna, Exterior Antenna Jack, AM/FM Radio w/Cassette or CD Player, Speakers (2), Table, Locking Door	O	O	O	O	O	O	O
Satellite System Pre-Wiring Roof	S	S	S	S	S	S	S
Satellite System Digital∞ w/Elevation Sensor	O	O	O	O	O	O	O
Sound System Deluxe, Amplifier, 6 Speakers	O	O	O	O	O	O	O
Stereo Power Switch Main or Aux. Battery	S	S	S	S	S	S	S
Stereo (Cab) AM/FM/Cassette w/Speakers (4)	S	S	S	S	S	S	S
Stereo w/CD Player (Cab) AM/FM w/Speakers (4)	O	O	O	O	O	O	O
Telephone Input & Interior Jack	S	S	S	S	S	S	S
TV* (13" Color) w/Remote Located in Bedroom	O	O	O	O	O	O	O
TV* Front (19" Color) w/Remote Video Selection System	O	O	O	O	S	O	O
TV* Front (19" Color) w/VCR w/Remotes Video Selection System	O	O	O	O		O	O
TV* Side (19" Color) w/Remote Video Selection System			O				
TV Enhancement Package Antenna (Amplified), DC Receptacles (2), Interior Jacks (2), Coax Wiring, Cable Input, TV Shelf or Stand	S	S	S	S	S	S	S
VCR w/Remote					O		

SLIDEOUT	30A	32T	33B	34H	34V-P	35C	37G
Slideout Room (Driver's Side)* Switch Located on Instrument Panel, Cover, Compartments Slideout w/Room			S		S	O	S
Overhead Cabinets* Mirror & Wainscoting w/Chair Rail					S	O	S

INTERIOR	30A	32T	33B	34H	34V-P	35C	37G
Cabinets Wood Doors	S	S	S	S	S	S	S
Carpeting w/Pad Stain Resistant	S	S	S	S	S	S	S
Ceiling Lights, Courtesy Lights (2)	S	S	S	S	S	S	S
Ceiling Lights Fluorescent, Recessed, Galley, Lounge					S		
Ceiling Vent* Non-Powered, Lounge (30A), Galley (NA 30A), Bedroom (30A)	S	S	S	S	S	S	S
Ceiling Vent Powered, Bathroom	S	S	S	S	S	S	S
Ceiling Vent Powered Ventilator Fan, Galley (Lounge 30A)	O	O	O	O	O	O	O
Clock Decorator Style	S	S	S	S	S	S	S
Coffee Table* (Avail. Only w/Slideout on 35C)					S	O	S
Color Themes (Interior) Choice of Castleton (Taupe), Cloud (Gray), Mint (Green)	S	S	S	S	S	S	S
Lamp(s)* Decorator Style, in Lounge		S	S	S	S	S	S
Picture* Framed		S			S		
Throw Pillows (2)	S	S	S	S	S	S	S
Wardrobe Mirrored Door(s), Carpeted Floor, Drawers (NA on 32T, 33B, 35C), Light, Clothes Rod, Shelf (NA on 34V-P)	S	S	S	S	S	S	S
Washer/Dryer Combination							O
Washer/Dryer Prep Kit Drainage, Water, Electrical Connections					O		
Windows Tinted	S	S	S	S	S	S	S

	30A	32T	33B	34H	34V-P	35C	37G
Windows* Dual Glazed, Thermo-Insulated	O	O	O	O	O	O	O
Windows* Dual Glazed, Thermo-Insulated (Bedroom)			O			O	
GALLEY	30A	32T	33B	34H	34V-P	35C	37G
Coffee Maker*	O	O	O	O	O	O	O
Countertop Solid Surface					O		
Decorative Light Dinette					S	S	S
Flip-Up Countertop Extension	S						
Flooring (Vinyl)	S	S	S	S	S	S	S
Galley Rail	S	S		S			
Hutch				S			
Microwave/Convection Oven Touch Control	O	O	O	O		O	O
Microwave/Convection Oven w/Range Fan Residential 30", Touch Control					S		
Microwave Oven Touch Control	S	S	S	S		S	S
Pantry Slideout w/Adjustable Shelves, Locking	S		S		S	S	S
Range Hood Fan, Generator Hourmeter Gauge*, Light & Switch	S	S	S	S		S	S
Range Top 3-Burners w/Storage Drawers below, Range Cover	O	O	O	O	O	O	O
Range w/Large Glass-Doored Oven Range Cover, 3-Burners, 1 High Output Burner	S	S	S	S	S	S	S
Refrig./Freezer Large, Double-Door	S	S	S	S	S	S	S
Refrig./Freezer Large, Double-Door w/Icemaker			O	O	O	O	O
Refrig./Freezer* Side-by-Side w/Icemaker			O		O	O	O
Sink (Double) Stainless Steel, Recessed w/Countertop Covers, Single Control Faucet	S	S	S	S	S	S	S
Spice Rack			S				
Storage Drawers below Dinette Seats	S	S	S	S		S	S
Table & Chairs (4)*	O	O	O	O	O	O	O
Wall Border Decorative	S	S	S	S	S	S	S
Water Purification System	S	S	S	S	S	S	S
BEDROOM	30A	32T	33B	34H	34V-P	35C	37G
Bedspread, Pillows, Pillow Shams, Throw Pillow	S	S	S	S	S	S	S
Hamper							S
Headboard Padded Fabric					S		
Lamp(s) Decorator Style, Wall-Mounted	S	S	S	S	S	S	S
Mattress(es) (Serta®) w/Non-Slip Mat, Access to Storage below, Gas Springs	S	S		S	S	S	S
Mirror Backwall					S		
Wainscoting w/Chair Rail	S	S	S	S	S	S	S
BATHROOM	30A	32T	33B	34H	34V-P	35C	37G
Flooring (Vinyl)	S	S	S	S	S	S	S
Hamper Tip-Out		S			S		
Lavatory Cabinet	S	S		S	S	S	S
Linen Cabinet	S	S			S		
Magazine Rack	S		S				S
Makeup Lights (3)	S			S			S
Makeup Lights (4)		S	S		S		
Medicine Cabinet(s)	S	S	S	S	S	S	S
Mirror(s) Wall-Mounted	S	S	S		S	S	S
Shower Door Glass			S		S		S
Shower Door Pleated	S	S		S		S	
Shower/Tub Shower Head	S	S	S	S	S	S	S
Sink Oval, w/Ledge Back	S	S	S	S	S	S	S
Skylight & Shower Light	S	S	S	S	S	S	S
Tissue Holder	S	S	S	S	S	S	S
Toilet w/Sprayer & Foot Pedal Porcelain	S	S	S	S	S	S	S
Towel Bar	S		S			S	
Towel Rack 3 Rods, Built into Bath Door	S	S	S	S		S	S
Towel Ring(s)		S	S	S	S		S
EXTERIOR	30A	32T	33B	34H	34V-P	35C	37G
Awning Rail	S	S	S	S	S	S	S
Awning* Patio	O	O	O	O	O	O	O
Bumpers Rustproof, Front: Steel Reinforced, Rear: Formed Aluminum w/End Caps	S	S	S	S	S	S	S
Entrance Door w/Screen Door Latch & Deadbolt Locks, Electric Steps	S	S	S	S	S	S	S
Graphics Package Choice of Wintergreen Met. (Rec. w/Castleton) or Khaki Met. (Rec. w/Cloud & Mint)	S	S	S	S	S	S	S
Holding Tanks (Heated Compartment)	S	S	S	S	S	S	S
Ladder/Mud Flaps Rear	S	S	S	S	S	S	S
Outlet 110-V, Curbside	S	S	S	S	S	S	S
Porch Light w/Interior Switch	S	S	S	S	S	S	S
Service Center (Electrical) Cable TV Input, Power Cord, Telephone Input	S	S	S	S	S	S	S
Service Center (Water/Drainage) City Water Hook-Up, Tank Diverter Fill (33B), Drainage Valves, Exterior Wash Station w/Pump Switch, Sewer Hose	S	S	S	S	S	S	S

	30A	32T	33B	34H	34V-P	35C	37G
Sewer Hose	S	S	S	S	S	S	S
Storage Compartments Heated Rear Storage Compartment*, Locks, Gas Struts, Single Paddle Latch, Lights	S	S	S	S	S	S	S
Tire Tools Wrench, Leverage Bar, Hoist Rod	S	S	S	S	S	S	S
Trailer Towing Package w/Hitch	S	S	S	S	S	S	S
Trailer Wiring Extension	S	S	S	S	S	S	S
Trunk* Access to Underbed Storage (NA w/Twin Bed Option)	S	S	S			S	
Undercoating*	O	O		O	O	O	
Water Fill Door Lockable, Water System Drain	S	S	S	S	S	S	S
Wheel Covers	S	S	S	S		S	S
Wheel Liners Stainless Steel	O	O	O	O	S	O	O
Wheels Stylized Aluminum					O		
SYSTEMS	30A	32T	33B	34H	34V-P	35C	37G
30-Amp. Power Cord	S	S	S	S	S	S	S
50-Amp. Power Cord*		O	O	O	O	O	O
Air-Cond. (Coleman) Ducted, Roof, 14,800-BTU	S						
Air-Cond. (Coleman) Ducted, Roof, Front/Rear		S	S	S	S	S	S
Automatic Changeover Switch Shoreline/Generator	S	S	S	S	S	S	S
Aux. Automotive Heater (Rear)			S				
Batteries (2) Deep Cycle RV	S	S	S	S	S	S	S
City Water Hook-Up	S	S	S	S	S	S	S
Electrical Control Center 120-V AC/12-V DC, 15-Amp. Battery Charger, 45-Amp. Conv., DC Automotive Fuses, AC Circuit Breakers	S						
Electrical Distribution System Breaker Panels, 45-Amp. Converter/Charger		S	S	S	S	S	S
Furnace 35,000-BTU	S	S					
Furnace 40,000-BTU			S	S	S	S	S
Generator Prep Kit Fuel Line (NA 34V-P), 12-V Wiring	S	S	S	S	S	S	S
Generator* (Onan) 4,000 or 5,000-Watt, Gas	S	S	S	S	S	S	S
Generator* (Onan) 6,500-Watt, Gas (LP 34V-P)	O	O	O	S	O	O	O
Generator* (Onan) 7,500-Watt Quiet Diesel				O			
Holding Tank Flushing System Black Tank			S				
HWH Hydraulic Leveling Jacks* Front & Rear	O	O	S	O	S	O	S
Inverter* (Heart Interface®) 110-V for TV/VCR, 130-Watt	O	O	O	O	O	O	O
LP Tank Permanent Mount w/Gauge	S	S	S	S	S	S	S
Monitor Panel Water, Holding & LP Tank Levels, Battery Condition Gauge, Water Heater Ignition Switch w/Pilot Indicator Light, Water Pump Switch, Located in Galley	S	S	S	S	S	S	S
PowerLine Energy Management System		S	S	S	S	S	S
Water Heater 6-gal., Electronic Ignition			S		S		
Water Heater (Motoraid) & Rear Auto. Heater	S	S		S		S	S
Water Heater Winterization By-Pass Valve	S	S	S	S	S	S	S
Water Pump (Demand) Accumulator Tank	S	S	S	S	S	S	S
Water System Winterizing Valve	S	S	S	S	S	S	S
SAFETY	30A	32T	33B	34H	34V-P	35C	37G
3-Point Retracting Seat Belts (Drv./Frt. Pass.)	S	S	S	S	S	S	S
Assist Handle* Interior & Exterior	S	S	S	S	S	S	S
Assist Strap Interior	S	S	S	S	S	S	S
Carbon Monoxide Detector/Alarm	S	S	S	S	S	S	S
Fire Extinguisher (10-B.C.)	S	S	S	S	S	S	S
Ground Fault Interrupter	S	S	S	S	S	S	S
High Mount Brake Light	S	S	S	S	S	S	S
Lap Belts in Selected Areas	S	S	S	S	S	S	S
LP Leak Detector/Smoke Detector/Alarm	S	S	S	S	S	S	S
Windshield Laminated Safety Glass Mounted in Steel, Window Escape	S	S	S	S	S	S	S
WARRANTY	30A	32T	33B	34H	34V-P	35C	37G
12 Month/15,000 Mile Basic Warranty, 36 Month/36,000 Mile Warranty on Structure**, 10 Year Limited Parts & Labor Warranty on Roof	S	S	S	S	S	S	S

△ The SunCruiser floorplans feature a widebody design — over 96". In making your purchase decision, you should be aware that some states restrict access on some or all state roads to 96" in body width. Before making your purchase decision, you should confirm the road usage laws in the states of interest to you.

NA Not Available

◇ Capacities shown are tank manufacturer's listed water capacity (W.C.). Actual filled LP capacity is 80% of listing due to safety shut-off required on tank.

* The height of each model is based on the curb weight of a typically equipped unit on the standard chassis. The actual height of your vehicle may vary by as much as 2" depending on chassis or equipment variations.

S Standard

O Optional

* Not all options available in combination. See dealer for details.

∞ TV satellite system options do not include programming activation or receiver. Quality reception is only available in the lower 48 States.

** See your dealer for complete warranty documentation information.

Winnebago Industries' continuing program of product improvement makes specifications, equipment, model availability and prices subject to change without notice. Comparisons to other motor homes are based on the most recent information available.

A Few More Details.



1999 SUNCRUISER.

IT'S A FEATURE PRESENTATION.

- Select appliances are secured with steel tie-downs, an exclusive Winnebago Industries safety feature. It's not something we're required to do. It just makes sense.
- Interior paneling is laminated with a unique hot melt adhesive proven to resist moisture and delamination.
- Our Thermo-Panel® construction is one of the most durable, rigid sidewall constructions in the industry. We start with a one-piece fiberglass exterior which is laminated to a rigid lauan backing material. Next, a layer of block foam insulation is applied. This insulation is then routed to embed the welded aluminum framework.
- SunCruiser truly is a versatile vehicle. One example of this is the 3 1/4" thick roof, which has an R factor of 14.62. The roof's one-piece fiberglass outer skin adds structural integrity, doesn't expand and contract like rubber membranes, and is far more durable. This design is so strong, it's backed by a 10-year parts and labor limited warranty.
- To maintain the highest quality, Winnebago Industries manufactures the majority of the components found in the SunCruiser. All components which aren't manufactured by Winnebago Industries must pass a series of stringent quality control tests before being specified for use in a SunCruiser.
- Superior Warranty Coverage:
 - Transferable 12 month/15,000 mile limited warranty.
 - 36 month/36,000 mile warranty on structure**.
 - 1 yr. Premium Roadside Assistance from Winnebago Industries.
 - 10 yr. roof material limited warranty - parts and labor.

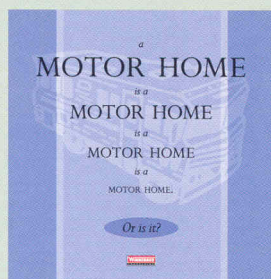
Winnebago Industries has been designated a "Qualified Vehicle Modifier" by Ford Motor Company. The QVM program promotes high standards for manufacturers who build motor homes on Ford chassis, and we are proud to be one of the first motor home manufacturers to qualify. Meeting QVM standards is a part of our policy of continuous quality improvement.



www.winnebagoind.com

CONSIDER IT AN ADVANCED EDUCATION IN MOTOR HOMES.

There's much more to buying a motor home than simply finding one with comfortable furniture and inviting interior fabrics (although those things are important). In fact, we recommend people spend as much time examining the motor home's "unseen" features as they do looking over the interior appointments. For instance, there's a great deal you can learn about how well a motor home is constructed by simply looking inside the storage compartments.



To help make your buying decision easier, we've put together a user-friendly guide which lists the most important things you should be looking for in a motor home, no matter what make or model it is. "The Guide" also highlights the importance of meeting (and exceeding) industry standards, explains Winnebago Industries' one-of-a-kind construction process and details our industry-leading warranty and care programs. So ask for "The Guide" the next time you visit your Winnebago Industries dealer. This "advanced education" will definitely pay off down the road.

For Sales and Service Information Contact:



©1998 Winnebago Industries, Inc.

Printed in USA

Seat belts are your most important hookup. Always buckle up.