

2011

Eagle

TRAVEL TRAILERS AND FIFTH WHEELS BY JAYCO



EAGLE SUPER LITE
TRAVEL TRAILER

EAGLE SUPER LITE
FIFTH WHEEL

EAGLE
TRAVEL TRAILER

EAGLE
FIFTH WHEEL



AMERICA'S MOST **LIVEABLE** RVs.



TRUE VALUE OF OWNERSHIP

With Jayco, you get more amenities, more liveable, home-like features and superior construction for better durability and greater resale value. **Simply put, you won't find another RV packed with more TRUE VALUE — from the time of purchase to the time you sell.**

- + 2-year warranty
- + more standard features
- + more brand-name components
- + less maintenance
- + better resale value

True Value of Jayco Ownership

Learn more about Jayco's True Value by finding the blue arrows  throughout this brochure.



AMERICA'S MOST **LIVEABLE** RVs.



CERTIFIED GREEN

All Jayco products are green certified by TRA Certification Inc., an independent, third-party certification agency. Eagle earned gold certification through the use of sustainable materials, environmentally-friendly production methods, energy-efficient components and reduction of waste.



WARRANTY

WE BACK OUR PRODUCTS FOR
2 YEARS. ASK OUR COMPETITION
WHY THEY DON'T.

You want your RV to last a long time. And nobody backs their RVs better than we do. Our exclusive two-year Co-Pilot Warranty is the best in the business and provides assurance that you'll enjoy your purchase for many years.



The RV for RV lovers.

The Jayco Eagle is perfect for anyone looking to break away from ordinary RVing without breaking the bank. Whether you choose the travel trailer, fifth wheel or one of our economical Super Lite versions, you'll find Eagle offers more high-end features, more comfort and more amenities than the competition, for the best value. And that's why we say Eagle is the RV for people who love RVing.



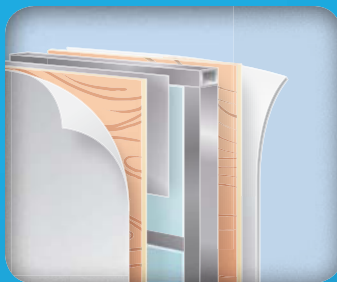
↑ MORE LIVEABILITY

With the new adjustable-pitch electric patio awning, you can spend more time outdoors protecting yourself from rain or sun. (Adjustable pitch not available on the Eagle FW).



↑ WATER WORKS SYSTEM

Jayco's innovative 80-plus gallon fresh water system includes a water heater bypass and durable Pex water lines.



↑ DURABLE CONSTRUCTION

An I-Class structural steel chassis frame, TuffShell vacuum-bonded lamination sidewalls and longitudinal floor joists make Eagle as durable as it is liveable.

Eagle®

TRAVEL TRAILERS AND FIFTH WHEELS BY JAYCO®

2011

EAGLE

Super Lite Series



SUPER LITE
TRAVEL TRAILER

SUPER LITE
FIFTH WHEEL

SUPER LITE, SUPER ROOMY

The Eagle Super Lite travel trailer and Eagle Super Lite fifth wheel feature many of the same amenities and finishing touches as their larger counterparts, but with lower prices they're easier to fit into any RV budget, while their lighter weights make for easier towing.

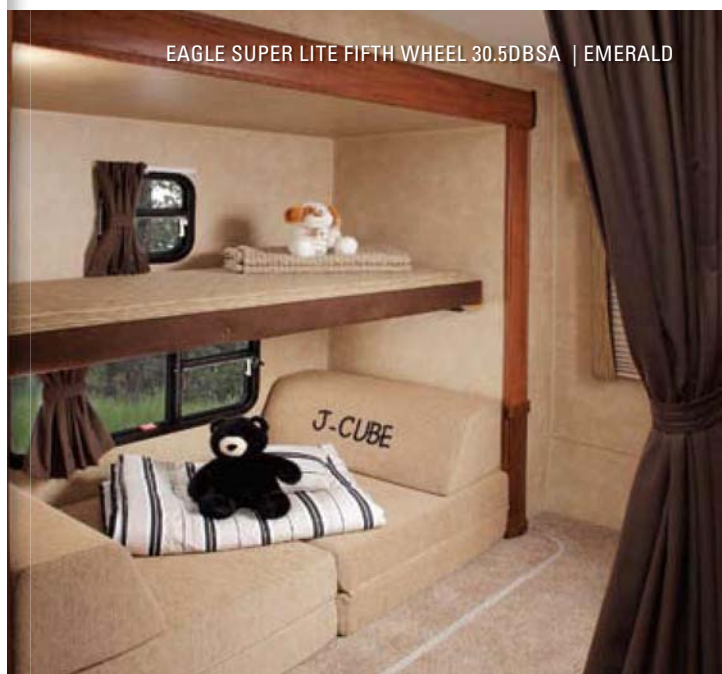


RETREAT

With a mirrored medicine cabinet, skylight, shower and sink, the Eagle Super Lite bathroom provides a soothing sanctuary to refresh after a day outdoors.

COMFORTABLE

The living areas in the Eagle Super Lite fifth wheels feature a 32" LCD HDTV, J-Steel convertible sofa, overhead cabinetry and residential-style furniture.



EAGLE SUPER LITE FIFTH WHEEL 30.5DBSA | EMERALD



EAGLE SUPER LITE FIFTH WHEEL 30.5DBSA | EMERALD

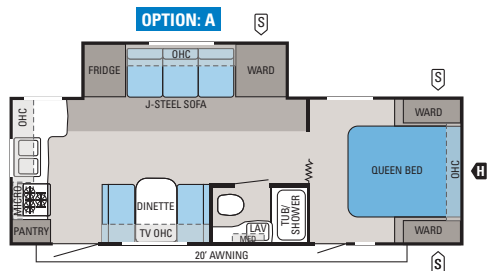


EAGLE SUPER LITE TRAVEL TRAILER 304BHK | COFFEE

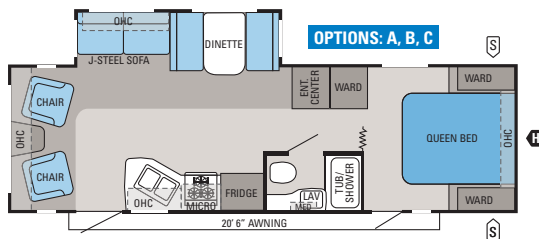


EAGLE SUPER LITE TRAVEL TRAILER 304BHK | COFFEE

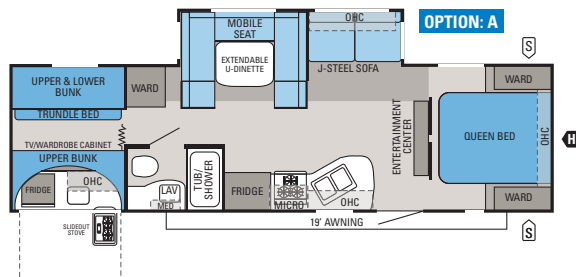
Eagle Super Lite Series | FLOORPLANS

**SUPER LITE TRAVEL TRAILER | 256RKS**

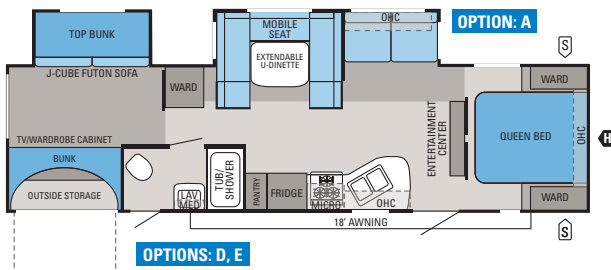
Ext. Length: 28' 2" Ext. Height: 129" Unloaded Weight (lbs.): 5,915

**SUPER LITE TRAVEL TRAILER | 298RLS**

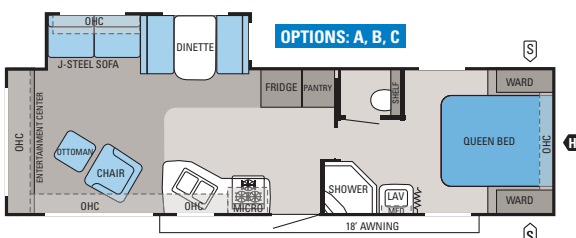
Ext. Length: 31' 5" Ext. Height: 132" Unloaded Weight (lbs.): 6,185

**SUPER LITE TRAVEL TRAILER | 304BHK**

Ext. Length: 33' 7" Ext. Height: 133" Unloaded Weight (lbs.): 7,030

**SUPER LITE TRAVEL TRAILER | 314BDS**

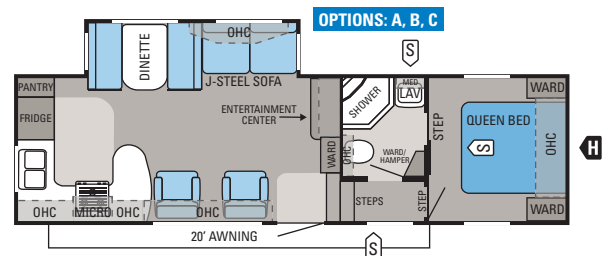
Ext. Length: 35' 3" Ext. Height: 133" Unloaded Weight (lbs.): 7,590

**SUPER LITE TRAVEL TRAILER | 318RLS**

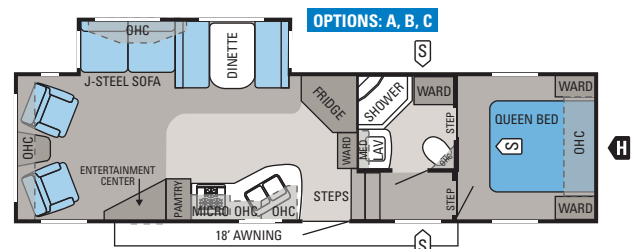
Ext. Length: 33' 7" Ext. Height: 133" Unloaded Weight (lbs.): 6,715

**SUPER LITE FIFTH WHEEL | 25.5 RKS**

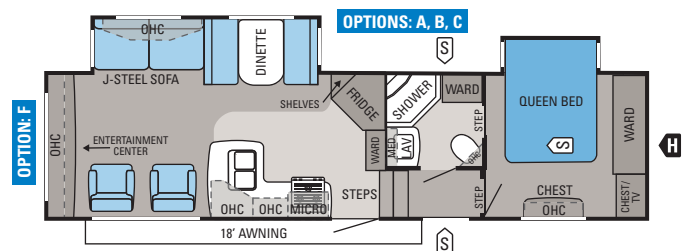
Ext. Length: 29' 2" Ext. Height: 150" Unloaded Weight (lbs.): 7,550

**SUPER LITE FIFTH WHEEL | 29.5RKS**

Ext. Length: 31' 8" Ext. Height: 151" Unloaded Weight (lbs.): 7,985

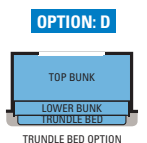
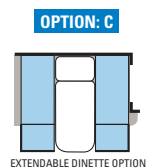
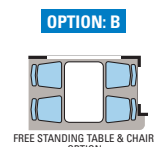
**SUPER LITE FIFTH WHEEL | 30.5RLS**

Ext. Length: 33' 4" Ext. Height: 152" Unloaded Weight (lbs.): 8,320

**SUPER LITE FIFTH WHEEL | 31.5RLDS**

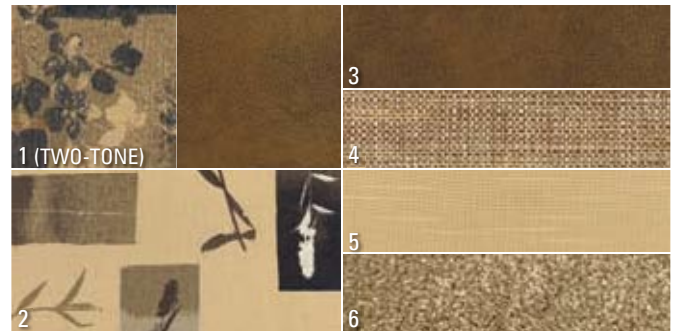
Ext. Length: 34' 7" Ext. Height: 152" Unloaded Weight (lbs.): 8,935

FLOORPLAN OPTIONS



INTERIOR DÉCOR CHOICES

COFFEE



ALMOND

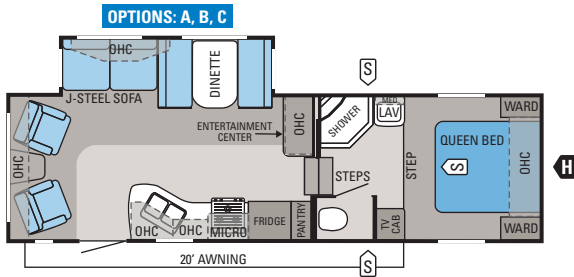


EMERALD



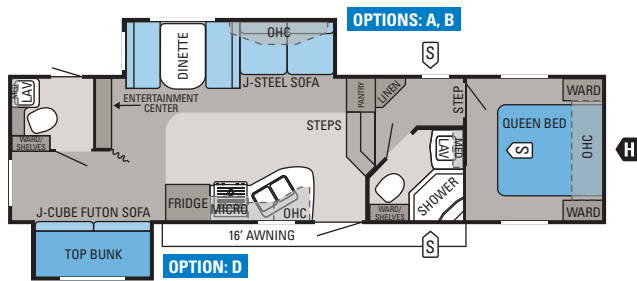
- | | | |
|-------------|-----------------|-----------|
| 1 Sofa | 3 Accent fabric | 5 Drapery |
| 2 Bedspread | 4 Chair | 6 Carpet |

WOOD



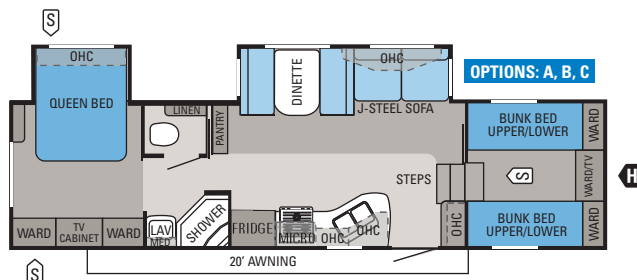
SUPER LITE FIFTH WHEEL | 28.5RLS

Ext. Length: 31' 2" Ext. Height: 151" Unloaded Weight (lbs.): 7,775



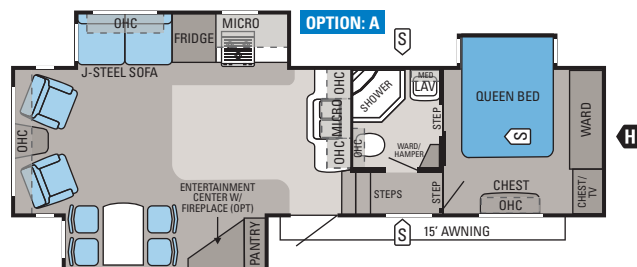
SUPER LITE FIFTH WHEEL | 30.5DBSA

Ext. Length: 34' 2" Ext. Height: 152" Unloaded Weight (lbs.): 9,120



SUPER LITE FIFTH WHEEL | 31.5FBHS

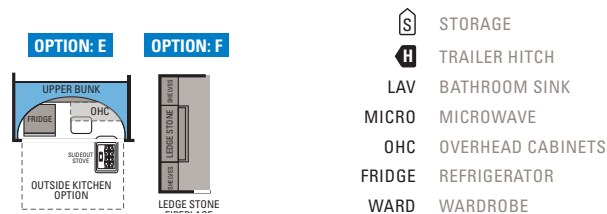
Ext. Length: 34' 2" Ext. Height: 152" Unloaded Weight (lbs.): 8,935



SUPER LITE FIFTH WHEEL | 31.5RLTS

Ext. Length: 34' 1" Ext. Height: 154" Unloaded Weight (lbs.): 9,175*

* Estimate. Visit your Jayco dealer or www.jayco.com for official spec.



Eagle Super Lite Series | STANDARDS AND OPTIONS

EAGLE SUPER LITE FW EAGLE SUPER LITE TT		EAGLE SUPER LITE FW EAGLE SUPER LITE TT		EAGLE SUPER LITE FW EAGLE SUPER LITE TT	
STANDARD BATHROOM EQUIPMENT					
6-panel residential-style passage door	••	Fully decked roof with 3/8" plywood	••	Concord Cherry raised-panel doors and drawers throughout	••
Glass shower door (select models)	••	Heated and enclosed fresh water tank and holding tanks	••	Crank-up HDTV antenna with signal booster	••
Marine toilet with foot flush	••	I-Class cambered structural steel I-beam frame	••	Fabric-covered box valances with lambrequin legs	••
Medicine cabinet with mirror	••	Pin box, long	•	High-intensity 12V lighting package	••
Shower curtain with curved shower track (select models)	••	Platforms for dinette, bed and bunks are constructed of 1/2" plywood	••	J-Steel convertible sofa	••
Skylight in tub/shower	••	Poly Flex one-piece moisture barrier underbelly covering	••	Linoleum floor in entryway	••
Switches for all lights	•	Reflective foil insulation in slideout floors and roof	••	Nickel cabinet hardware	••
Toilet paper holder	••	Seamless one-piece rubber roof	••	Nickel decorative lighting	••
Towel holder	••	TuffShell vacuum-bonded laminated sidewalls and floor	••	Overhead cabinetry in slideout room	••
Towel ring	••	Welded tubular aluminum floor and sidewall framework	••	Pleated night shades	••
Vinyl flooring	••			Residential furniture, designed and made by Jayco	••
STANDARD BEDROOM EQUIPMENT				Roof-mounted antenna for radio	••
312-coil innerspring mattress	•			Solid hardwood interior grab handle for main entrance door	•
Accordion door to bedroom (select models)	•	STANDARD EXTERIOR EQUIPMENT		Swivel rocker(s) (select models)	••
Ceiling vent	•	2-5/16" hitch coupler	•	Trackless carpeting with padding	••
Coordinated, quilted bedspread	••	15" radial tires	••	Vinyl flooring	••
Decorative headboard	•	ABS fender skirt	••	Wallpaper border	••
Decorative reading lights	•	Adjustable axle hangers	•		
Hardwood decorative headboard with bookshelf	•	Aerodynamic front profile	•		
Large pass-through storage (select models)	•	Amber patio light with inside switch	••		
Laundry hamper (select models)	•	Lockable baggage doors, insulated and radius-cornered with heavy-duty grab handles	••		
Privacy curtains (select models)	•	Big Easy entrance step with 10" deep treads	••	STANDARD HEAT, POWER & WATER EQUIPMENT	
Shirt wardrobe	••	Bumper with drain hose carrier and end caps	••	6-gal. gas/electric DSI auto-ignition water heater	•
TV cabinet (select models)	•	Chrome hub caps	••	12V demand water pump	••
Under-bed storage, bed lifts easily on gas struts	••	Diamond-plated panel on front	•	12V electrical system with deluxe 120V	
		Electric-powered front jacks	•	45-amp power converter (60-amp in 31.5RLDS FW)	••
		Exterior speakers, high-output marine grade (2)	••	30-amp power cord (50-amp in 31.5RLDS FW)	••
		E-Z Lube axles	••	120V G.F.C.I. protected exterior receptacle	••
		Foldable, exterior grab handle	••	A/C Chillgrille	••
		Front jacks with quick-release pins	•	ABS holding tanks	••
		Galvanized steel wheel wells	••	Auto-ignition furnace with wall thermostat	••
		MOR/ryde CRE 3000 axle equalizer	••	Battery box for two batteries	•
		Outdoor media center	••	Black holding tank sprayer	•
		Painted bottom radius skirting	•	Double 30-lb. propane bottles with regulator	••
		Pass-through storage compartment	••	Gravity fill for water	••
		Prep for outside grill	••	Hookup for city water	••
		Rain guttering, molded with extended drip spouts	••	In-floor ducted heating	••
		Rear stabilizer jacks (2)	•	Outside shower	••
		Roof ladder	•	Rotocast fresh water holding tanks	•
		Screened egress bunk windows	••	Systems monitor panel	••
		Security light, door side	•	Water system winterization kit	••
		Spare tire with carrier	••		
		Stabilizer jacks (4)	•		
		Torq-N-Go wheel nuts	••	STANDARD SAFETY EQUIPMENT	
		White-framed 30" radius-cornered fiberglass main entry door	••	Breakaway switch	••
				Deadbolt lock on entrance door	••
				Dual hitch safety chains	•
				Egress window	••
				Fire extinguisher	••
				Propane/carbon monoxide alarm	••
				Smoke alarm	••
				Tinted safety-glass windows	••
				OPTIONS	
				Aluminum rims	••
				Bedroom carpet	•
				Bike rack/cargo tray system	••
				Customer Value Package	••
				Customer Value Package with 15,000-BTU A/C	••
STANDARD KITCHEN EQUIPMENT					
3-burner range with 9,000-BTU SuperBurner and piezo igniter	••				
6-cu. ft. flush-mount refrigerator	••				
Color-coordinated countertops	••				
Concord Cherry raised-panel refrigerator front	••				
Deep residential-style double bowl sink	••				
Deep storage drawer under booth dinette seat, door on other dinette seat	•				
Deep storage drawers under booth dinette	•				
Drawer for silverware, divided for utensils	••				
Dream Dinette mechanism, raises and lowers dinette tabletop (select models)	••				
Extra large picture window at dinette	•				
High-rise mixing faucet	••				
Mini blind	••				
Oversized 21" oven	••				
Range hood with light and exhaust fan	••				
Sink cover/cutting board (1)	•				
Sponge holder under sink	•				
STANDARD CONSTRUCTION FEATURES					
4-1/2" arched truss roof rafters with R-7 insulation	••				
81" ceiling height	•				
Aerodynamic wrap-around front fiberglass cap	•				
Bead-foam insulation (R-7 sidewalls, R-9 in floor)	••				
Electric-powered slideout(s)	••				
Frame prepped for bike rack/cargo tray	••				
FRP smooth fiberglass sidewall exteriors	••				

	EAGLE SUPER LITE FW	EAGLE SUPER LITE TT		EAGLE SUPER LITE FW	EAGLE SUPER LITE TT		EAGLE SUPER LITE FW	EAGLE SUPER LITE TT
Electric rear stabilizer jacks	•	•	CUSTOMER VALUE PACKAGE	•	•	Microwave oven with carousel	•	•
Extendable dinette (select models)	•	•	2nd 13,500-BTU A/C in bedroom	•	•	Multi-Media Premium Sound System	•	•
Free-standing table with 4 chairs (select models)	•	•	6-gal. gas/electric DSI auto-ignition water heater	•	•	AM/FM/CD/DVD stereo with MP3 input jack	•	•
Hide-a-bed with air mattress	•	•	13,500-BTU A/C with wall thermostat with louvered	•	•	Outside shower	•	•
Linoleum floor in living area	•	•	directional ceiling vents	•	•	Oversized oven	•	•
Outside kitchen (select models)	•	•	ABS gas bottle cover	•	•	Quilted bedspread	•	•
Portable, outside gas grill	•	•	ABS tub surround	•	•	Shirt wardrobes in bedroom	•	•
Reese Revolution pin box	•	•	Bathroom power vent	•	•	Sink cover/cutting board (1)	•	•
Roof ladder	•	•	Bi-fold cover for range	•	•	Skylight in tub/shower	•	•
Satellite kit	•	•	Carefree Travel'r 12V adjustable pitch	•	•	Water heater bypass system	•	•
Thermal pane tinted safety-glass windows	•	•	electric patio awning	•	•			
Trundle bed	•	•	Double 30-lb. propane gas bottles with regulator	•	•			
Water purification system	•	•	Innerspring mattress	•	•			

Eagle Super Lite Series | SPECIFICATIONS

	FLOORPLAN	EXTERIOR LENGTH	EXTERIOR HEIGHT (WITH A/C)	EXT. HEIGHT (WITH OPT. BEDROOM A/C)	INT. HEIGHT	UNLOADED VEHICLE WEIGHT (LBS.)	DRY HITCH WEIGHT (LBS.)	GROSS VEHICLE WEIGHT RATING (LBS.)	CARGO CARRYING CAPACITY (LBS.)	FRESH WATER CAPACITY (GAL.) (WITH WATER HEATER)	GRAY WASTEWATER CAPACITY (GAL.)	TOILET/BLACK WASTEWATER CAPACITY (GAL.)
SUPER LITE TRAVEL TRAILER	256RKS	28' 2"	129"	—	81"	5,915	795	7,500	1,585	36.5	65	32.5
	298RLS	31' 5"	132"	—	81"	6,185	780	7,950	1,765	36.5	32.5	32.5
	304BHK	33' 7"	133"	—	81"	7,030	930	8,500	1,470	36.5	32.5	32.5
	314BDS	35' 3"	133"	—	81"	7,590	950	9,250	1,660	36.5	32.5	32.5
	318RLS	33' 7"	133"	—	81"	6,715	790	8,300	1,585	36.5	65	32.5
SUPER LITE FIFTH WHEEL	25.5RKS	29' 2"	150"	—	72"	7,550	1,465	10,000	2,450	82	65	32.5
	28.5RLS	31' 2"	151"	—	77"	7,775	1,650	10,200	2,425	90	65	32.5
	29.5RKS	31' 8"	151"	—	72"	7,985	1,625	10,700	2,715	90	65	32.5
	30.5BSA	34' 2"	152"	—	72"	9,120	1,755	11,700	2,580	82	65	65
	30.5RLS	33' 4"	152"	—	77"	8,320	1,805	11,200	2,880	82	65	32.5
	31.5FBHS	34' 2"	152"	—	68"	8,935	2,135	11,700	2,765	82	65	32.5
	31.5RLDS	34' 7"	152"	154"	72"	8,935	2,135	11,700	2,765	82	65	32.5
	31.5RLTS	34' 1"	154"	156"	72"	9,175*	1,985*	11,900	2,775*	82	65	32.5

* Estimate. Visit your Jayco dealer or www.jayco.com for official spec.

Unloaded Vehicle Weight (UVW): Sometimes referred to as "Dry Weight," UVW means the typical weight of this trailer as built at the factory. The UVW, as used in product literature and other promotional materials, does not include cargo, fresh water, propane, options or dealer-installed accessories.

Gross Vehicle Weight Rating (GVWR): GVWR means the maximum permissible weight of the trailer, including the UVW plus passengers, personal items, all cargo, fluids, options, and dealer-installed accessories. The GVWR is equal to or greater than the sum of the UVW and the CCC.

Cargo Carrying Capacity (CCC): CCC means the maximum weight of all passengers, personal items, food, fresh water, propane, tools, other cargo and dealer-installed accessories that can be carried by the trailer. CCC is equal to or less than GVWR minus UVW. The addition of options will decrease the CCC.

Hitch Weight (HW): The hitch weight, as used in product literature and other promotional materials, does not include cargo, fresh water, propane gas, options or dealer-installed accessories. The addition of these types of items will either add to or subtract from the stated hitch weight.

It is important for your safety and enjoyment that your tow vehicle be adequately sized and equipped to tow and handle the GVWR of the RV you select. Review weights and rating of your tow vehicle and consult a competent advisor for questions or advice. Whether you are new to RVing or a veteran, get a feel for the performance of your tow vehicle before heading out on the roadways. When you tow an RV, you must drive differently than when you drive a single vehicle. Practice hooking up, driving, backing up and braking in a safe environment or seek out professional instruction. Jayco affixes a weight label to each RV which lists weight information for that vehicle. See specifications chart above.

Eagle Series



TRAVEL TRAILER

FIFTH WHEEL

SMART MOVE

If you're looking to move beyond the traditional travel trailer or fifth wheel, then it's time to take a look at the Eagle. Both the Eagle travel trailer and Eagle fifth wheel combine intuitive design, superior construction materials, ample interior space and more name-brand appliances into the perfect home away from home.



MANEUVERABLE

The Eagle fifth wheel's tight-turn radius means it's as easy to park as it is to tow, making it an ideal upgrade from typical fifth wheels.

CONTEMPORARY

You'll love cooking in Eagle's modern kitchen, with Burnished Cherry cabinetry, Dream Dinette, Corian countertops, three-burner stove and deep stainless-steel, residential-style sink.



EAGLE TRAVEL TRAILER 320RLDS | EMERALD





EAGLE FIFTH WHEEL 321RLMS | ALMOND WITH PREMIER INTERIOR PACKAGE



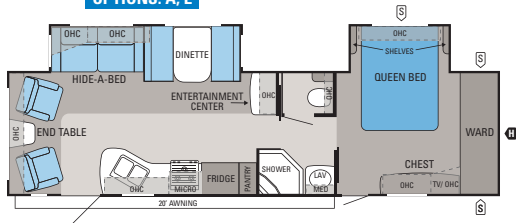
EAGLE FIFTH WHEEL 321RLMS | ALMOND (PREMIER)



EAGLE TRAVEL TRAILER 320RLDS | EMERALD

Eagle Series | FLOORPLANS

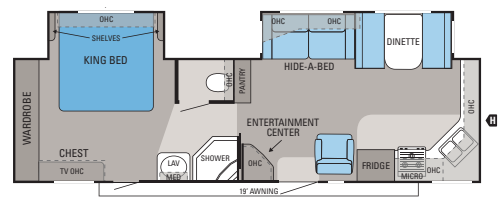
OPTIONS: A, E



TRAVEL TRAILER | 320RLDS

Ext. Length: 35' 6" Ext. Height: 134" Unloaded Weight (lbs.): 8,115

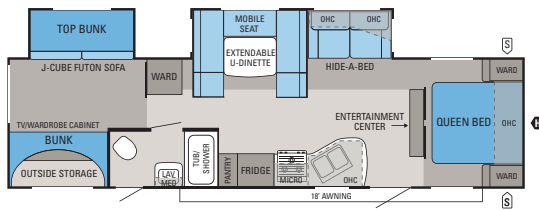
OPTIONS: A, E



TRAVEL TRAILER | 322FKS

Ext. Length: 33' 11" Ext. Height: 134" Unloaded Weight (lbs.): 7,875

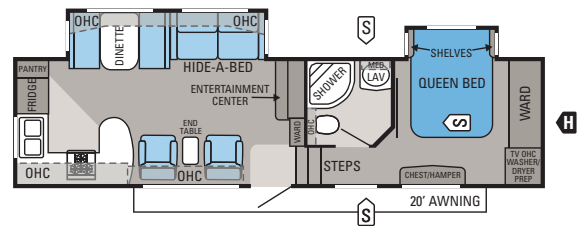
OPTION: F



TRAVEL TRAILER | 324BHDS

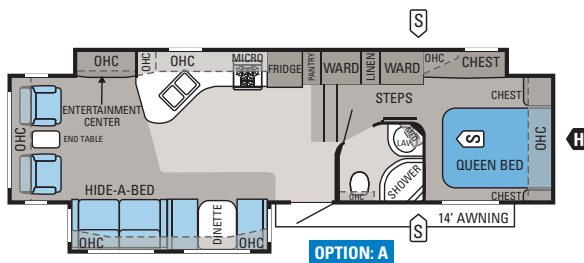
Ext. Length: 35' 6" Ext. Height: 134" Unloaded Weight (lbs.): 8,000

OPTIONS: A, D



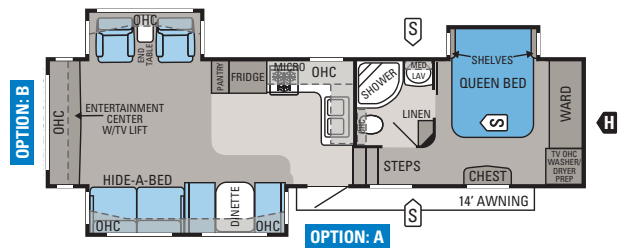
FIFTH WHEEL | 313RKS

Ext. Length: 35' Ext. Height: 152" Unloaded Weight (lbs.): 10,230



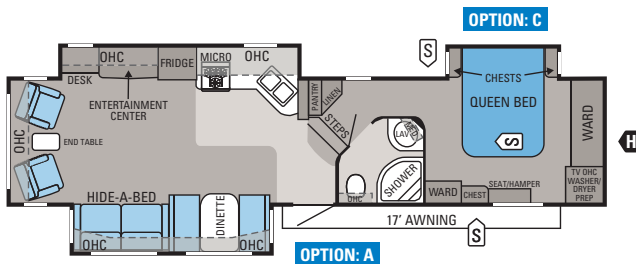
FIFTH WHEEL | 321RLMS

Ext. Length: 35' 10" Ext. Height: 156" Unloaded Weight (lbs.): 11,375



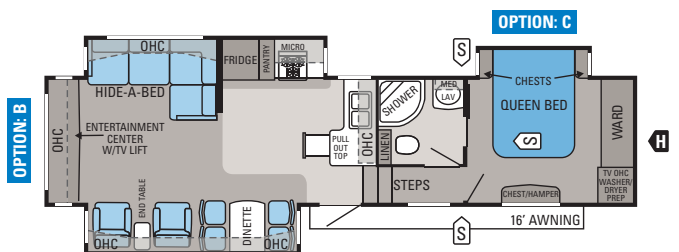
FIFTH WHEEL | 321RLTS

Ext. Length: 35' 4" Ext. Height: 151" Unloaded Weight (lbs.): 10,575



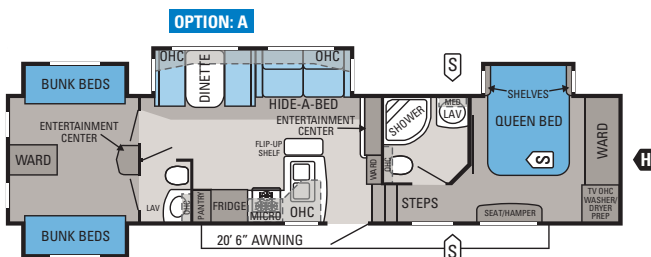
FIFTH WHEEL | 351RLSA

Ext. Length: 39' 1" Ext. Height: 151" Unloaded Weight (lbs.): 11,080



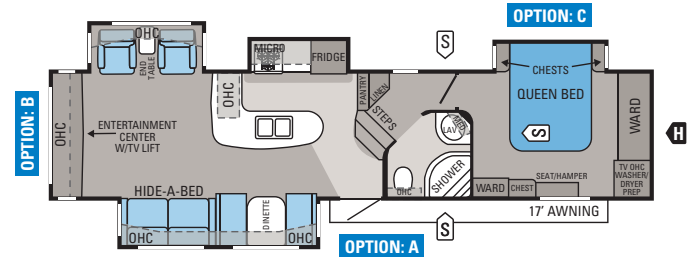
FIFTH WHEEL | 351RLTS

Ext. Length: 38' 6" Ext. Height: 151" Unloaded Weight (lbs.): 11,280



FIFTH WHEEL | 365BHS

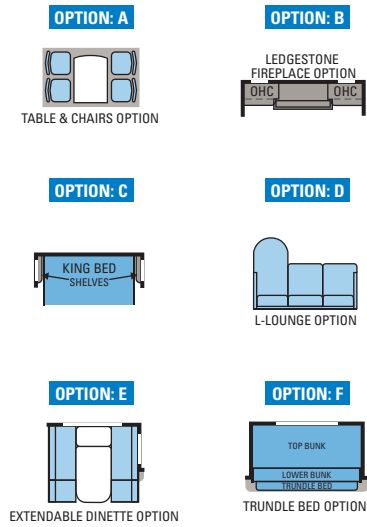
Ext. Length: 40' Ext. Height: 160" Unloaded Weight (lbs.): 11,740



FIFTH WHEEL | 371RLQS

Ext. Length: 39' 4" Ext. Height: 151" Unloaded Weight (lbs.): 11,605

FLOORPLAN OPTIONS

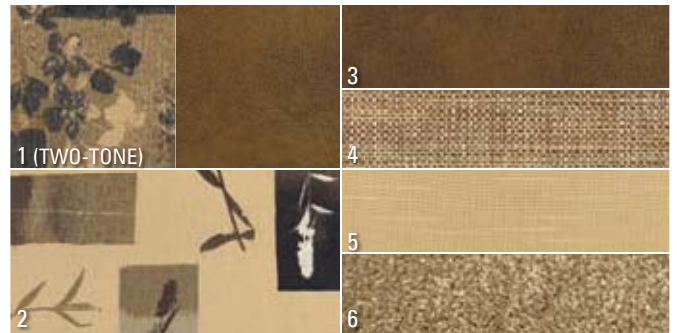


FLOORPLAN KEY

-  STORAGE
-  TRAILER HITCH
- LAV BATHROOM SINK
- MICRO MICROWAVE
- OHC OVERHEAD CABINETS
- FRIDGE REFRIGERATOR
- WARD WARDROBE

INTERIOR DÉCOR CHOICES

COFFEE



ALMOND



EMERALD



- 1 Sofa
- 2 Bedspread
- 3 Accent fabric
- 4 Chair
- 5 Drapery
- 6 Carpet

WOOD



Eagle Series | STANDARDS AND OPTIONS

EAGLE FW EAGLE TT		EAGLE FW EAGLE TT		EAGLE FT EAGLE TT	
STANDARD BATHROOM EQUIPMENT					
6-panel residential-style passage door	••	Pin box, long	•	Cable and satellite TV prepped	••
ABS tub/shower surround	••	Platforms for dinette, bed and bunks are constructed of 1/2" plywood	••	Ceiling fan	•
Glass shower door	•	Polar Barrier insulation package	•	Concord Cherry raised-panel doors and drawers throughout	•
Large sink in bathroom	••	Poly Flex one-piece moisture barrier underbelly covering	••	Crank-up HDTV antenna with signal booster	••
Marine toilet with foot flush	•	R-21 insulation value in roof, R-8 in sidewalls, R-24 in floor and underbelly, R-15 in slideout floors	•	Fabric-covered box valances with lambrequin legs	••
Medicine cabinet with mirror	••	Reflective foil insulation in slideout floors and roof	••	Free-standing end table	•
Radius-glass shower door	•	Seamless one-piece rubber roof	••	Hide-a-bed sofa (air mattress)	••
Switches for all lights	••	TuffShell vacuum-bonded 5" crowned laminated roof	•	High-intensity 12V lighting package	••
Thetford porcelain toilet with foot flush	•	TuffShell vacuum-bonded laminated sidewalls	•	Linoleum floor in entryway	•
Toilet paper holder	••	TuffShell vacuum-bonded laminated sidewalls and floor	•	Oak trim around main entrance door	•
Towel holder	••	Welded tubular aluminum floor and sidewall framework	•	Overhead cabinetry in slideout room	••
Towel ring	••	Welded tubular aluminum sidewall framework	•	Pleated day/night shades throughout	••
Vanity light fixture	••			Residential furniture, designed and made by Jayco	••
Vinyl flooring	••			Residential trim package throughout	••
STANDARD BEDROOM EQUIPMENT		STANDARD EXTERIOR EQUIPMENT		Rocker recliner(s)	•
Accordion door to bedroom (select models)	••	2-5/16" hitch coupler	•	Roof-mounted antenna for radio	••
Ceiling vent	••	12V hitch light	•	Solid hardwood interior grab handle for main entrance door	••
Coordinated, quilted bedspread	••	15" radial tires	•	Swivel rocker(s) (select models)	•
Decorative headboard	••	16" radial tires	•	Trackless carpeting with padding	••
Dresser lamp	•	ABS fender skirt	••	Transom window with wood trim above main slideout room	•
Large pass-through storage (select models)	•	Amber patio light with inside switch	••	Ventilating windows on slideout end walls	••
Laundry hamper (select models)	•	Lockable baggage doors insulated and radius-cornered with heavy-duty grab handles	••	Vinyl flooring	•
TV cabinet (select models)	••	Big Easy entrance step with 10" deep treads	••	Wallpaper border	••
Under-bed storage, bed lifts easily on gas struts	••	Bumper with drain hose carrier and end caps	••		
STANDARD KITCHEN EQUIPMENT		Chrome hub caps	••	STANDARD HEAT, POWER & WATER EQUIPMENT	
3-burner range with 9,000-BTU SuperBurner and piezo igniter	••	Cover for propane bottle made of molded ABS	••	12V demand water pump	••
8 cu. ft. flush-mount double-door refrigerator	••	Dexter Nev-R-Adjust brakes	••	12V electrical system with deluxe 120V	•
Bi-fold cover for range	••	Electric front jacks	•	45-amp power converter	•
Color-coordinated countertops	••	Electric rear stabilizer jacks	•	12V electrical system with deluxe 120V	•
Concord Cherry raised-panel refrigerator front	•	Exterior speakers, high-output marine grade (2)	••	90-amp power converter	•
Decorative wood spindles on base cabinets	•	E-Z Lube axles	••	30-amp power cord	•
Deep residential-style double bowl sink	••	Foldable, exterior grab handle	•	50-amp power cord	•
Deep storage drawers under booth dinette	••	Front jacks with quick-release pins	•	120V G.F.C.I. protected exterior receptacle	••
Drawer for silverware, divided for utensils	•	Galvanized steel wheel wells	••	A/C Chillgrille	••
Dream Dinette mechanism, raises and lowers dinette table top (select models)	••	MaxiStor (select models)	•	ABS holding tanks	••
Extra large picture window at dinette	••	MOR/ryde CRE 3000 axle equalizer	••	Auto-ignition furnace with wall thermostat	••
Mini blind	••	Outdoor media center	•	Battery box for two batteries	•
Nickel, single-lever kitchen faucet with pull-out sprayer	•	Painted bottom radius skirting	••	Black holding tank sprayer	••
Oversized 21" oven	••	Pass-through storage compartment	•	Double 30-lb. propane bottles with regulator	••
Range hood with light and exhaust fan	••	Prep for outside grill	••	Gravity fill for water	•
Sink cover/cutting board (1)	••	Rain guttering, molded with extended drip spouts	••	Hookup for city water	••
Sponge holder under sink	••	Roof ladder	•	In-floor ducted heating	••
STANDARD CONSTRUCTION FEATURES		Screened egress bunk windows	••	Outside shower	••
5/8" tongue-and-groove plywood main floor decking	•	Spare tire with carrier	••	Rotocast fresh water holding tanks	•
2" x 3" longitudinal floor studs placed on 16" centers	•	Stabilizer jacks (2 pair)	•	Systems monitor panel	••
4-1/2" arched truss roof rafters with R-7 insulation	•	Stor-Galore basement storage	•	Uni-Dock utility center, heated and enclosed	•
81" ceiling height	•	Torg-N-Go wheel nuts	••	Water heater bypass system	•
Aerodynamic wrap-around front fiberglass cap	••	White-framed 30" radius-cornered fiberglass main entry door	••	Water system winterization kit	••
Cabinetry crafted with screwed-stile construction	••	STANDARD INTERIOR EQUIPMENT		STANDARD SAFETY EQUIPMENT	
Electric-powered slideout	••	32" LCD HDTV in living area	••	Breakaway switch	••
Frame prepped for bike rack/cargo tray	••	Antique nickel cabinet hardware	••	Deadbolt lock on entrance door	••
FRP smooth fiberglass sidewall exteriors	••	Antique nickel lighting at sofa and dinette	••	Dual hitch safety chains	•
Fully decked roof with 1/4" plywood	•	Arched step treads into bathroom	•	Egress window	••
Fully decked roof with 3/8" plywood	•	Ball bearing drawer guides 75-lb. capacity with full-drawer extension	•	Fire extinguisher	••
Heated and enclosed fresh water tank and holding tanks	••	Ball bearing drawer guides 100-lb. capacity with full-drawer extension	•	Propane/carbon monoxide alarm	••
I-Class cambered structural steel I-beam frame	••	Cabinet door hinges, hidden throughout	•	Smoke alarm	••
				Tinted safety-glass windows	••

OPTIONS

2 rocker recliners in lieu of 2 swivel rockers (select models)	•
2nd 13,500-BTU A/C in bedroom	•
40" LCD HDTV in lieu of 32" LCD HDTV	•
5,500-watt generator (generator prep included)	•
Bike rack/cargo tray system	••
CD stereo in bunk	•
Customer Value Package	••
Customer Value Package with 15,000-BTU A/C	•
Electric stabilizer jacks (4)	•
Electric tongue jack	•
Extendable dinette (select models)	•
Fireplace with Ledgestone façade	•
Free-standing table with 4 chairs (select models)	••
Generator prep	•
Key fob remote control	•
King bed (select models)	•
Linoleum in living area	••
Portable, outside gas grill	••
Premier Interior Package	•
Rocker recliner in lieu of swivel rocker	•
Roof ladder	•

Satellite kit	••
Slideout awning	•
Slideout awning above door	•
Slideout awnings	••
Sofa	•
Thermal pane tinted safety-glass windows	••
Trundle bed option (select models)	•
Burnished hardwood slideout fascia boards	•
PREMIER INTERIOR PACKAGE	
Burnished Cherry cabinetry	•
Corian high-gloss kitchen countertop with sink cover inserts	•
Nickel single-lever kitchen faucet with pull-out sprayer	•
Power lift vent in living room and/or rear bedroom	•
Recessed halogen ceiling lights	•
Rustic plank wood-grain vinyl flooring in kitchen and bath	•
Stainless-steel under-mount kitchen sink	•
Upgraded bedding package	•
Upgraded hide-a-bed sofa with air mattress	•
CUSTOMER VALUE PACKAGE	
10-gal. gas/electric DSI auto-ignition water heater	•
12-gal. gas/electric DSI auto-ignition water heater	•

13,500-BTU A/C with wall thermostat with louvered directional ceiling vents	•
15,000-BTU A/C with louvered and directional ceiling vents	•
Aluminum rims	•
Bathroom power vent	••
Burnished hardwood slideout fascia boards	•
Carefree Travel'r 12V adjustable pitch electric patio awning	•
Carefree Travel'r 12V electric patio awning	•
Deluxe pillowtop mattress	••
Floor-mounted safe	•
Foldable, exterior grab handle	••
Microwave oven with carousel	••
Multi-Media Premium Sound System AM/FM/CD/DVD/stereo with MP3 input jack	••
Security lights (2)	••
Skylight in tub/shower	••
Vacuum-bonded 5" crowned laminated roof with R-21 insulation value	•
Water heater bypass system	•
Water purifier	••

Eagle Series | SPECIFICATIONS

	FLOORPLAN	EXTERIOR LENGTH	EXTERIOR HEIGHT (WITH A/C)	EXT. HEIGHT (WITH OPT. BEDROOM A/C)	INTERIOR HEIGHT	UNLOADED VEHICLE WEIGHT (LBS.)	DRY HITCH WEIGHT (LBS.)	GROSS VEHICLE WEIGHT RATING (LBS.)	CARGO CARRYING CAPACITY (LBS.)	FRESH WATER CAPACITY (GAL.) (WITH WATER HEATER)	GRAY WASTEWATER CAPACITY (GAL.)	TOILET/BLACK WASTEWATER CAPACITY (GAL.)
TRAVEL TRAILER	320RLDS	35' 6"	134"	—	81"	8,115	1,215	10,500	2,385	90	37	37
	322FKS	33' 11"	134"	—	81"	7,875	1,160	10,250	2,375	90	85.5	48.5
	324BHDS	35' 6"	134"	—	81"	8,000	1,025	10,250	2,250	90	37	37
FIFTH WHEEL	313RKS	35'	152"	160"	77"	10,230	2,345	14,000	3,770	87	89	52
	321RLMS	35' 10"	156"	162"	77"	11,375	2,350	14,750	3,375	87	52	52
	321RLTS	35' 4"	151"	160"	77"	10,575	2,225	14,500	3,925	87	89	52
	351RLSA	39' 1"	151"	158"	77"	11,080	2,435	14,950	3,870	87	87	52
	351RLTS	38' 6"	151"	160"	77"	11,280	2,250	15,250	3,970	87	87	52
	365BHS	40'	160"	160"	77"	11,740	2,340	15,800	4,060	87	89	89
	371RLQS	39' 4"	151"	160"	77"	11,605	2,335	15,500	3,895	87	87	52

Unloaded Vehicle Weight (UVW): Sometimes referred to as "Dry Weight," UVW means the typical weight of this trailer as built at the factory. The UVW, as used in product literature and other promotional materials, does not include cargo, fresh water, propane, options or dealer-installed accessories.

Gross Vehicle Weight Rating (GVWR): GVWR means the maximum permissible weight of the trailer, including the UVW plus passengers, personal items, all cargo, fluids, options, and dealer-installed accessories. The GVWR is equal to or greater than the sum of the UVW and the CCC.

Cargo Carrying Capacity (CCC): CCC means the maximum weight of all passengers, personal items, food, fresh water, propane, tools, other cargo and dealer-installed accessories that can be carried by the trailer. CCC is equal to or less than GVWR minus UVW. The addition of options will decrease the CCC.

Hitch Weight (HW): The hitch weight, as used in product literature and other promotional materials, does not include cargo, fresh water, propane gas, options or dealer-installed accessories. The addition of these types of items will either add to or subtract from the stated hitch weight.

It is important for your safety and enjoyment that your tow vehicle be adequately sized and equipped to tow and handle the GVWR of the RV you select. Review weights and rating of your tow vehicle and consult a competent advisor for questions or advice. Whether you are new to RVing or a veteran, get a feel for the performance of your tow vehicle before heading out on the roadways. When you tow an RV, you must drive differently than when you drive a single vehicle. Practice hooking up, driving, backing up and braking in a safe environment or seek out professional instruction. Jayco affixes a weight label to each RV which lists weight information for that vehicle. See specifications chart above.

LIVEABLE FEATURES AND AMENITIES

Every Jayco comes packed with features and amenities designed to make your life easier and family time more enjoyable.



RAISED-PANEL CABINETRY

Concord Cherry or Burnished Cherry cabinets and nickel hardware add to Eagle's home-like atmosphere.



OUTSIDE KITCHEN

Spend even more time outdoors with Eagle's optional outside kitchen, complete with stove, refrigerator, sink and storage space (select models).



BALL BEARING GUIDES

Our residential-style ball bearing drawer guides provide smooth operation and full-drawer extension.



HIDE-A-BED SOFA

There's plenty of room for company thanks to a hide-a-bed sofa with air mattress and blanket drawer (optional in Super Lite models).



A TRADITION OF LIVEABILITY

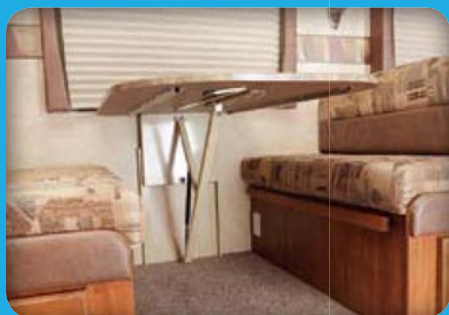
Starting with our first lifter system for fold-down campers in 1968, which made for an easier, more enjoyable camping experience, Jayco has always been about liveability. Today, we're the world's largest family-owned RV manufacturer, yet our priorities remain the same: making RVs more liveable and family time more memorable.

www.jayco.com



NORCOLD REFRIGERATOR

A spacious refrigerator lets you bring along everything you need for a great home-cooked meal.



DREAM DINETTE

Easily raise and lower your tabletop or extend it out with an optional 12" leaf and support leg (most models).



TRUE VALUE OF OWNERSHIP

With Jayco, you get more amenities, more liveable, home-like features and superior construction for longer durability and a better resale value. Simply put, you won't find another RV packed with more *true value*—from the time of purchase to the time you sell. Don't believe us? Run through this list. The check marks don't lie.

US THEM

2011 EAGLE

- | | | |
|-------------------------------------|--------------------------|-------------------------------------------------------------|
| <input checked="" type="checkbox"/> | <input type="checkbox"/> | 2-year industry-leading Co-Pilot warranty |
| <input checked="" type="checkbox"/> | <input type="checkbox"/> | MOR/ryde CRE 3000 rubberized suspension |
| <input checked="" type="checkbox"/> | <input type="checkbox"/> | Astrofoil insulation |
| <input checked="" type="checkbox"/> | <input type="checkbox"/> | Nev-R-Adjust brakes with Torq-n-Go lug nuts (select models) |
| <input checked="" type="checkbox"/> | <input type="checkbox"/> | Goodyear brand radial tires |
| <input checked="" type="checkbox"/> | <input type="checkbox"/> | Polar Barrier insulation package (Eagle fifth wheel) |
| <input checked="" type="checkbox"/> | <input type="checkbox"/> | I-Class structural steel I-beam frame |
| <input checked="" type="checkbox"/> | <input type="checkbox"/> | Full-extension ball bearing drawer guides throughout |
| <input checked="" type="checkbox"/> | <input type="checkbox"/> | 32" HDTV with 180-degree viewing (select models) |
| <input checked="" type="checkbox"/> | <input type="checkbox"/> | Dream Dinette table mechanism (select models) |



AMERICA'S MOST **LIVEABLE** RVs.

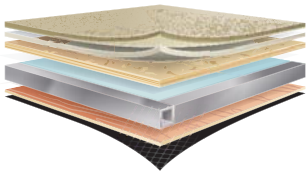
JAYCO CONSTRUCTION

At Jayco, we've built a reputation for superior construction and craftsmanship. We always use top-quality materials and production techniques, giving our products reliable resale value and our owners peace of mind.



INSIDE THE ENGINEERING | Eagle Travel Trailer and Super Lite Series

Much of what gives a Jayco its reputation for durability and strength is inside the walls and under the chassis. The Eagle Super Lites and the Eagle travel trailers feature ① an aerodynamic front profile (Super Lite fifth wheels only), ② MOR/ryde CRE 3000 suspension, ③ an enclosed and heated underbelly, ④ Torq-N-Go wheel nuts with Dexter Nev-R-Adjust brakes (Eagle travel trailers only) and ⑤ an I-Class structural steel I-beam frame.



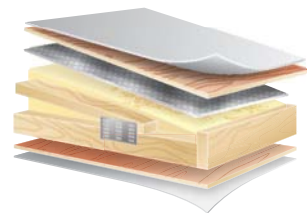
FLOOR

Vacuum-bonded lamination joins our welded aluminum frame with bead-foam insulation (R-9) and decking to create one of the industry's strongest foundations.



WALLS

TuffShell vacuum-bonded lamination combines welded aluminum frames, metal backers, decorative interior wall panels and fiberglass exterior siding, creating a durable structure designed to withstand use and travel.



ROOF

A combination of $\frac{3}{8}$ " plywood decking, wood rafters with 4 $\frac{1}{2}$ " arched trusses, foil insulation (R-22) and a seamless rubber shield protect against moisture and resist aging.



POLAR BARRIER PACKAGE

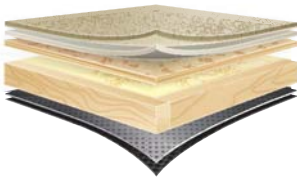
Our exclusive Polar Barrier thermal insulation package lets you extend the camping season by providing protection against freezing (temperatures as low as 0°F or -17°C), greatly increasing your options for winter travel destinations (Eagle FW only).

*The Jayco Eagle FW was tested in 0°F (-17°C) weather over an extended period of time in a controlled environment and all functions of the coach were fully operational. Testing cannot account for natural elements, such as wind or moisture. In actual use, unit may not perform as well. In addition, outside components are subject to freezing and require steps to properly insulate. Jayco's warranty does not cover damage caused by freezing.



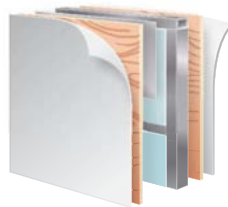
INSIDE THE ENGINEERING | Eagle Fifth Wheel

Much of what gives a Jayco its reputation for durability and strength is in the details. The Eagle fifth wheel features ① an aerodynamic Eurostyle front cap, ② Nev-R-Adjust brakes with Torq-n-Go lug nuts, ③ MOR/ryde CRE 3000 suspension, ④ an enclosed and heated underbelly, ⑤ Goodyear brand radial tires and ⑥ an I-Class structural steel I-beam frame.



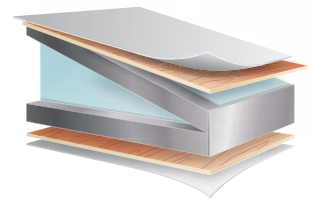
FLOOR

A $\frac{5}{8}$ " tongue-and-groove plywood deck on 2" x 3" wooden floor joists, together with fiberglass and foil insulation (R-24) and a Poly Flex covering, creates one of the strongest foundations in the industry.



WALLS

TuffShell vacuum-bonded lamination combines welded aluminum frames, metal backers, decorative interior wall panels and fiberglass exterior siding, creating a durable structure designed to withstand use and travel.



ROOF

The laminated, vacuum-bonded roof is topped off with $\frac{1}{4}$ " plywood decking on 5" arched aluminum trusses with bead-foam insulation (R-21) and a seamless rubber shield that protects against moisture and resists aging.

↑ JAYCO CRAFTSMANSHIP

Jayco's dedicated production team includes Amish craftsmen who build with well-honed woodworking techniques passed down for generations and skilled seamstresses who produce our upholstery, bedding and draperies with great attention to detail.





AMERICA'S MOST **LIVEABLE** RVs.



WARRANTY

INDUSTRY-LEADING WARRANTY

The Jayco Co-Pilot Warranty is a manufacturer's limited warranty. It comes from the people who build Jayco recreation vehicles to the people who buy them. Each Jayco is warranted to the original purchaser for twenty-four (24) months or twenty-four thousand (24,000) miles (mileage limitation applies to motorized products only), whichever occurs first, from the original date of purchase against defects in materials and workmanship. Jayco's limited warranty is not transferable. Go ahead and compare the Jayco warranty with other manufacturers' warranties. You'll find it's the best in the business!

For a copy of the limited warranty with full terms and conditions, ask your local Jayco dealer.



OVER 300 LOCAL DEALERS

Establishing a solid relationship with your local Jayco dealer is a key component in the enjoyment of your new Jayco. By purchasing from a local dealer, you will have a convenient location for sales, parts and service support.

Jayco dealers are required to deliver all products at the site of the sale to provide a full product orientation and walkthrough at the time of delivery. It's a good way to become familiar with your Jayco and to meet the service, parts and warranty staff members who will be assisting you. If you live in Canada, there are regulations that must be met when buying a Jayco RV. Your local Canadian dealer is a professional at meeting these requirements and regulations. There simply is no substitute for a good relationship with your local Jayco dealer.



1-YEAR ROADSIDE ASSISTANCE

Travel worry-free with Jayco's Customer First Roadside Assistance program, yours at no cost during your first year of ownership. This program is offered through Coach-Net, the largest RV emergency road service in the country, and gives you immediate access to dependable roadside assistance and support services with a simple phone call.

- Free jump starts
- Free tire changes
- Free fuel delivery
- Free lockout service
- Free travelers checks
- Toll-free nationwide service appointment assistance
- 24-hour toll-free emergency message service
- Free custom trip routing and full-color map service
- Free dispatch of on-site mechanical service
- \$2,000 trip-interruption reimbursement
- RV technical assistance hotline
- Free towing to nearest qualified service

Your Jayco Dealer



Jayco proudly sponsors Tread Lightly!, a nonprofit organization whose mission is to empower generations to enjoy the outdoors responsibly through education and restoration.



From RV insurance to extended warranties, JayPlus has it covered. Ask your Jayco dealer about our exclusive JayPlus program today.



As a Jayco owner, you can be part of the Jayco Jafari International Travel Club. Ask your dealer about the Jafari "flight" in your area, write Jayco or visit our website.

Jayco, Inc., P.O. Box 460, Middlebury, IN 46540, www.jayco.com © **RVIA**

See dealer for further information and prices. All information in this brochure is the latest available at the time of publication approval. Jayco reserves the right to make changes and to discontinue models without notice or obligation. Photos in this brochure may show optional equipment and props for photography purposes. RVs built for sale in Canada may differ to conform to Canadian codes. ©2010 Jayco, Inc. 11-EAGL-PL 0610-100K Printed in U.S.A.