

TRAVEL TRAILERS, PARK TRAILERS & FIFTH WHEELS

# ***FAMILY FUN***

***IN THE GREAT OUTDOORS***



**by Palomino**





# TRAVEL TRAILERS



29FQS





Puma Travel Trailers are built to withstand the demands of family living. With a large selection of floor plans, there's a Puma model perfectly suited for your family. Lots of special design features enhance the livability of every unit including

extra deep cabinets for added storage. Vibrant fabrics, stylish window treatments, and coordinated bedsreads and headboards add designer fashion to your leisure living.



26FBSS



26FBSS



26FBSS



27RLS



28BHS



29FQS



26FBSS





26FBSS



27RLS



28BHS



27RLS



28BHS

By carefully utilizing available space, Puma designers have integrated beauty, form, and function to create incredibly spacious floor plans with a full 80 inches of interior height. Fully-equipped kitchens feature residential style

appliances and quality countertops for high-end appeal. Deep cathedral style cabinets with polished nickel finish hardware and real wood drawers provide lots of convenient storage along with beauty and style.



# FIFTH WHEELS

Puma Fifth Wheels offer a long list of standard features and popular options to meet your family's need and desires. Quality furnishings throughout add beauty as well as value. Flush floor slide-outs expand living space and feature an attractive

wood fascia that adds an elegant touch of style. From spacious living areas to comfortable bedrooms, Puma exceeds your expectations.





# PARK MODEL & FLOORPLANS

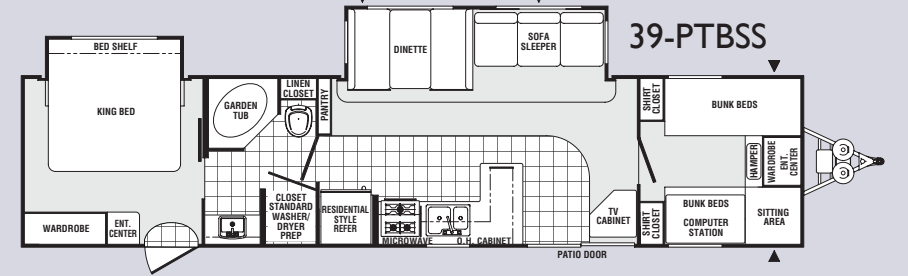
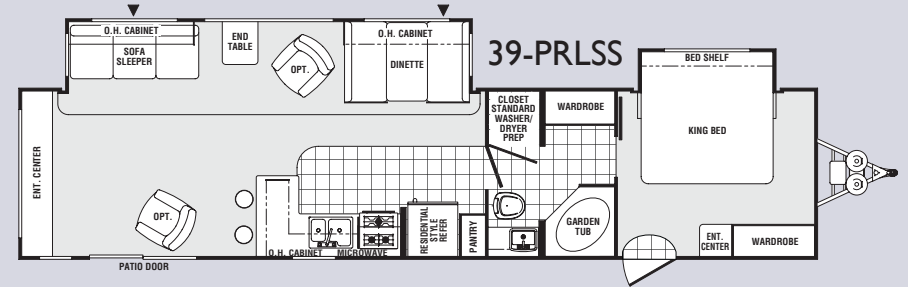
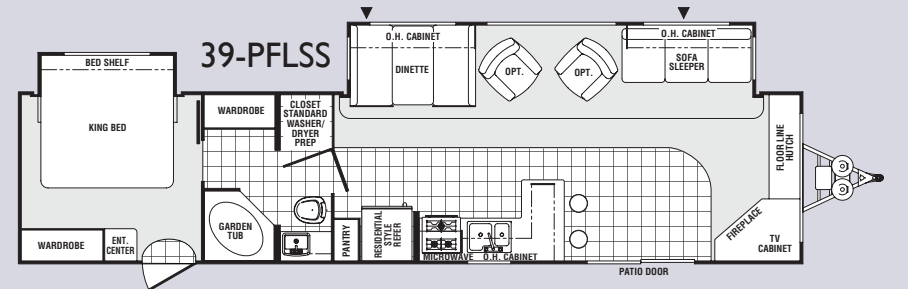
Puma Park Trailers make the perfect family retreat. The interior is specially designed with easy living features that add comfort and convenience. Handy kitchens, spacious living quarters, and comfortable bed and bath areas make Puma Park Trailers the best choice for your family.





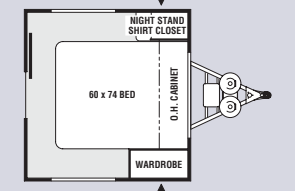


39PLFSS



## PARK MODELS

MODELS	39-PFLSS	39-PRSS	39-PTBSS
Hitch Dry Weight	1150	1185	800
Dry Axle Weight	8280	8415	9230
Total Dry Weight	9430	9600	10030
Carrying Capacity	1417	1985	467
GVWR	11300	11585	10960
Tire Size	15"	15"	15"
Interior Height	84"	84"	84"
Exterior Height w/AC	11'9"	11'9"	11'9"
Exterior Width	96"	96"	96"
Overall Length	40'3"	40'3"	40'3"
Fresh Water Capacity	45 gal.	45 gal.	45 gal.
Grey Water Capacity	64 gal.	64 gal.	64 gal.
Black Water Capacity	32 gal.	32 gal.	32 gal.



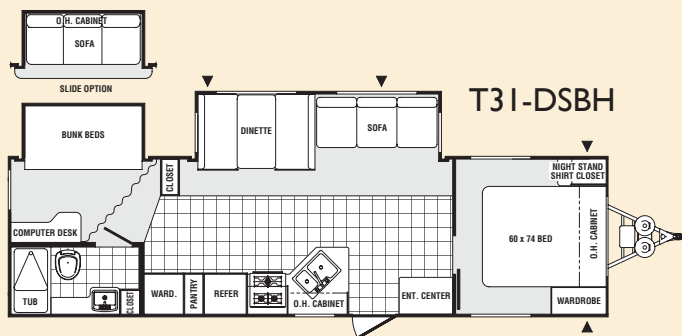
(PTQSS Option)



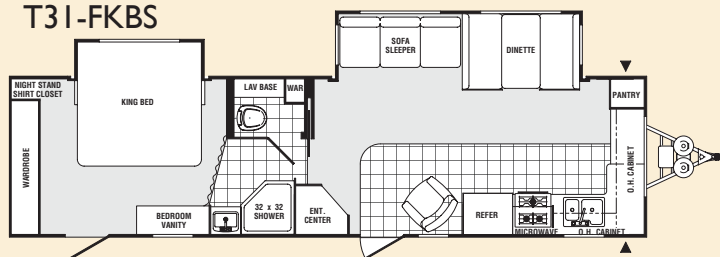






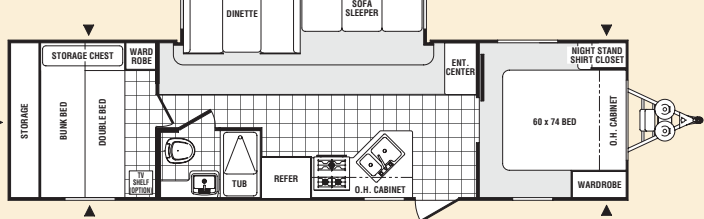


T31-FKBS



RESIDENTIAL PKG.  
AVAILABLE  
(see back page for  
details)

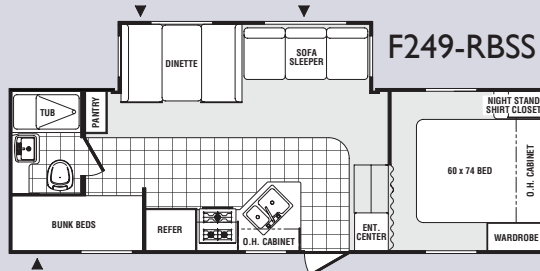
T32-RDSS



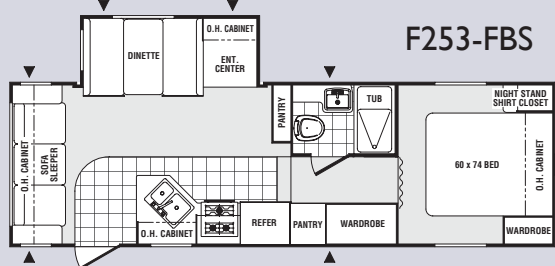
## TRAVEL TRAILERS

MODELS	31-DSBH	31-FKBS	32-RDSS
Hitch Dry Weight	980 lbs.	1020	930 lbs.
Dry Axle Weight	6000 lbs.	7064	5250 lbs.
Total Dry Weight	6980 lbs.	8084	6167 lbs.
Carrying Capacity	3697 lbs.	2624	3994 lbs.
GVWR	11140 lbs.	11180	11090 lbs.
Tire Size	15"	15"	15"
Interior Height	80"	80"	80"
Exterior Height w/AC	11'1"	11'1"	11'1"
Exterior Width	98"	98"	98"
Overall Length	33'5"	35'2"	35'0"
Fresh Water Capacity	45 gal.	45 gal.	45 gal.
Grey Water Capacity	32 gal.	64 gal.	32 gal.
Black Water Capacity	32 gal.	32 gal.	32 gal.

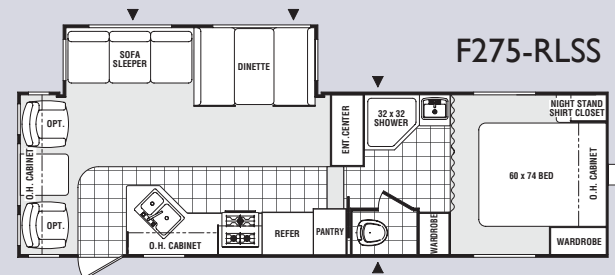
## 5TH WHEEL FLOOR PLANS



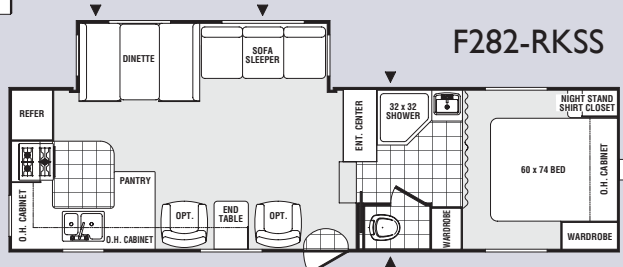
F249-RBSS



F253-FBS

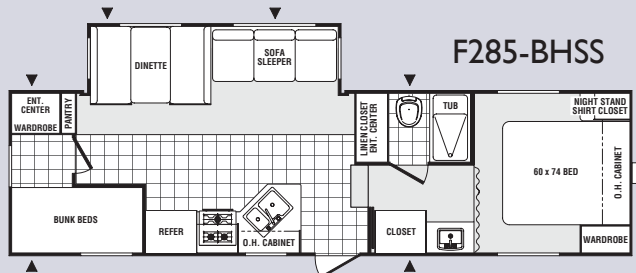


F275-RLSS



F282-RKSS

(Available with optional  
"J" Lounge IPO 2 Chairs)



F285-BHSS

## FIFTH WHEELS

MODELS	249-RBSS	253-FBS	275-RLSS	282-RKSS	285-BHSS
Hitch Dry Weight	1120 lbs.	1200 lbs.	1110 lbs.	1270 lbs.	1200 lbs.
Dry Axle Weight	5300 lbs.	5460 lbs.	5870 lbs.	5830 lbs.	6080 lbs.
Total Dry Weight	6420 lbs.	6660 lbs.	6980 lbs.	7100 lbs.	7280 lbs.
Carrying Capacity	3037 lbs.	2877 lbs.	2467 lbs.	2507 lbs.	2257 lbs.
GVWR	9920 lbs.	10000 lbs.	9910 lbs.	10070 lbs.	10000 lbs.
Tire Size	15"	15"	15"	15"	15"
Interior Height	80"	80"	80"	80"	80"
Exterior Height w/AC	12'2"	12'2"	12'4"	12'4"	12'4"
Exterior Width	98"	98"	98"	98"	98"
Overall Length	26'5"	27'11"	29'8"	30'7"	33'6"
Fresh Water Capacity	45 gal.	45 gal.	45 gal.	45 gal.	45 gal.
Grey Water Capacity	64 gal.	64 gal.	64 gal.	64 gal.	64 gal.
Black Water Capacity	32 gal.	32 gal.	32 gal.	32 gal.	32 gal.



## EXTERIOR FEATURES

- E-Coat Frames
- EZ Lube Axles
- .024-Gauge Mesa Aluminum Exterior
- Black Window Frames
- Clamp Ring Windows
- Double Entry Doors (where applicable)
- Pass-Thru Storage (where applicable)
- Rubber Roof -  
12 Year Manufacturer's Warranty
- 9" Three-Tier Steps
- Rain Gutters
- R7-Fiberglass Insulation (all 6 sides)
- 4- 1/2" Crowned Truss Rafters
- Automotive Style Fender Skirts
- Radius Trunk Doors
- Wrapped Darco Underbelly
- One Piece, 24' Sheet, 5/8" Floor Decking  
(25 Year Manufacturer's Warranty by  
Affiliated Resources, Inc.)
- 2 x 3 Flush Joists on 12" Centers
- Lighted Pass-Thru Exterior  
Compartments (where applicable)
- 2-20 lb. Gas Bottles
- 6 Gal. DSI Hot Water Heater
- Rack and Pinion Electric Slide System  
with Manual Override  
(standard on all slideout models)
- High End Exterior Graphics
- Extra Color Band Metal on the  
Bottom Sidewall
- Heavy Duty Storage Door for the  
Puma Den Option
- Rear Garage Storage Compartment  
(standard on the 27FQ, 28BHS, 30RDSS  
and 259RGSS)

## INTERIOR FEATURES

- Seating Technology Furniture
- 80" Interior Height
- Insulated Duct A/C (all models)
- Floor Ducted Heat
- Flush Floor Slide-Outs
- Real Wood Drawers
- Plant Built Wood Medicine Cabinet  
with Mirrored Door
- 60/40 Deep Double Bowl Kitchen Sink
- High Rise Kitchen Faucet
- Cathedral Mortise and Tenon  
Cabinet Doors
- Suburban 3-Burner, High Output Range
- Knife Rack

- Upgrade Window Treatment
- 55 Amp Converter with Battery Charger
- Flip Down Utensil Tray (kitchen)
- Divided Silverware Drawer (all models)
- Innerspring Mattress
- Bedroom Carpet
- 1 Sink Cover
- Single Door Refer
- Power Vent in Bath
- 12V Shower Light
- 5 Interior Colors
- Coat Hooks in Entry Way
- Bathroom Door Casing
- Quilted Bunk Mats
- Polished Nickel Finish Cabinet Hardware,  
Light and Bath Fixtures
- Cabinet Doors under Dinette Seats
- Upgraded Wood Facia Slide-Out Framing
- Upgraded Head Boards
- Upgraded Carpet (21 oz.)
- Upgraded Residential Armstrong  
ToughGuard® Linoleum
- High End Looking Counter Tops
- Color Coordinated Sink
- Full Length Wardrobe and Shirt Closet in  
Front Bedrooms (Travel Trailer only)

## STD. SAFETY FEATURES

- CO2 Detector
- LP Leak Detector
- Fire Extinguisher
- Smoke Detector

## TRAVEL TRAILER OPT.

- Water Purifier
- Sink Cover
- Range Cover
- Galley Extension
- Double Door Refer
- 6 Gal. Gas/Electric DSI Hot Water Heater
- Water Heater By-Pass (forced option)
- 21" Oven
- Microwave
- Create-a-Breeze Fan (exchange)
- AM/FM CD Stereo
- TV Antenna with Booster  
and Cable Hook-Up
- Bedroom TV Hook-Up (NA 19FS)
- Extra Roof Vent
- 13,500 BTU Ducted A/C
- 15,000 BTU Ducted A/C
- Bedspread

- Outside Grill
- Tub Surround
- Mini Blinds
- Wall Border
- Front Window with Rockguard
- Awning
- 2 Stabilizer Jacks
- 4 Stabilizer Jacks
- Outside Shower
- Tinted Safety Glass
- Diamond Plate
- 30 lb. Gas Bottles and Cover
- Spare Tire and Carrier
- AM/FM CD DVD Home Theater Surround  
Sound System
- Double Bed Spread and Bunk Spread\*
- PUMA Den\*
- Swivel Rocker\*
- Bath Skylights
- Free Standing Dinettes\*
- Overhead Cabinets in Slide Room\*
- Hide-A-Bed Sofa\*
- Glass Shower Door\*
- Roof Ladder
- Heated Tanks
- J-Lounge Sofa (29RKSS only)
- Interior Decors: Harvest, Onyx Tan,  
Mulberry, Jungle Forest Green and  
Reflex Baltic Blue

## PUMA PREMIER PACKAGE

See back cover for details

## PARK TRAILER STD.

- 6 Gal. Gas/Electric DSI Hot Water Heater
- Upgrade Mattress
- Home Theater DVD Surround Sound  
AM/FM/CD Player
- FS Range
- Phone Jacks
- Patio Door
- Residential Refer
- Solid Oak Raised Panel Cabinet Doors  
(throughout)
- Lambrequin Window Treatments
- 6 Panel Interior Passage Doors
- Bedroom Roof Vent
- TV (Std. in 39FLSS and 39PRLSS Only)

## PARK TRAILER OPTIONS

(See your dealer for details)

## FIFTH WHEEL OPT.

- Water Purifier
- Sink Cover
- Range Cover
- Galley Extension
- Double Door Refer
- 6 Gal. Gas/Electric DSI Hot Water Heater
- Water Heater By-Pass (forced option)
- Oven
- Microwave
- Create-a-Breeze Fan (exchange)
- AM/FM CD Stereo
- TV Antenna with Booster and Cable  
Hook-Up
- Bedroom TV Hook-Up
- Extra Roof Vent
- 13,500 BTU Ducted A/C
- 15,000 BTU Ducted A/C
- Bedspread
- Tub Surround
- Mini Blinds
- Wall Border
- Swivel Rockers\*
- Outside Grill
- Awning
- 2 Stabilizer Jacks
- Outside Shower
- Diamond Plate
- Tinted Safety Glass
- Power Front Jacks
- 30 lb. Gas Bottles
- Spare Tire and Carrier
- AM/FM CD DVD Home Theater Surround  
Sound System
- PUMA Den\*
- Bath Skylights
- Free Standing Dinettes\*
- Overhead Cabinets in Slide Room\*
- Hide-A-Bed Sofa\*
- Glass Shower Door\*
- Roof Ladder
- Heated Tanks
- "J" Lounge Sofa (282RKSS only)
- Interior Decors: Harvest, Onyx Tan,  
Mulberry, Jungle Forest Green and  
Reflex Baltic Blue

## PUMA PREMIER PACKAGE

(See back cover for details)

\*Available on Select Models





## ✓ NEW FEATURES

- E-Coat Frames
- EZ Lube Axles
- Black Window Frames
- New Deeper Overhead Cabinets in all Super Slides for Added Storage
- Coat Hooks in the Entry Ways
- Door Casing Around the Bathroom Doors
- New 9" Three Tier Steps
- New Quilted Bunk Mats
- New Upgraded Redesigned Head Boards
- Optional Diamond Plate (Fifth Wheels)

### PARK MODEL RESIDENTIAL PKG. (Available on T31FKBS Only)

- Residential Style 18 Cu. Ft. Refer
- Patio Door
- Free-Standing Range

## CONSTRUCTION & FEATURES

- A. Rubber roof (12 year warranty)
- B. Rugged, powder coated steel I-beam frame
- C. Sturdy .024 gauge aluminum skin
- D. Exterior amber lens patio light
- E. Exterior hitch light for night-time hook up
- F. 45 gallon fresh water tank
- G. Bold exterior graphics
- H. Residential grade carpet
- I. Color band metal enhances exterior looks
- J. Sidewall studding spaced 16" apart
- K. Longitudinal floor studding spaced 12" apart
- L. 5/8" DynaSpan™
- M. New Armstrong ToughGuard® linoleum flooring throughout
- N. R7 fiberglass insulation cut and glued between sidewall studs
- O. 4-1/2" crowned truss roof rafters
- P. Steel crossmembers for added support
- Q. Floor ducted heat
- R. Insulated wrapped ducted air conditioning runs
- S. 3/8" Roof decking

## NEW PUMA PREMIER PACKAGE!

- Radius Entry Door
- Folding Grab Handle
- Raised Panel Cabinet Doors (Eye Level Living Room and Kitchen)
- Lambrequin Window Treatments
- Overhead Cabinets in Super Slide Models
- Day/Night Window Shades
- Bi-Fold Doors In Place of Curtains (Where Applicable)
- Dark Tinted Safety Glass
- Upgraded Front Cap (Fifth Wheels)
- AM/FM CD DVD Home Theater Surround Sound System
- 6 Panel Interior Passage Doors
- Color Band Metal at the Top of the Coach
- Diamond Plate Standard
- High End Metal Rear Bumper Cover
- Chrome Trim Rings and Hubs on the Wheels
- Frosted Light Above Sofa in Super Slides
- Throw Pillows for the Sofa
- Roof Ladder
- Special Puma Premier Package Decal

**AVAILABLE IN ALL MODELS!!**



**Rear Storage**  
(Standard on 27FQ, 28BHS, and 32RDSS)



**Dinette Under Seat Storage Access**



**Pass-Thru Storage**



**Puma Den Door (Optional)**

DEALER

### Puma Division

Forest River, Inc.  
31450 M-86 West  
Colon, MI 49040  
Phone: (269) 432-3271  
[www.palominorv.com](http://www.palominorv.com)

All illustrations and specifications contained in this literature are based on the latest product information at time of publication. Forest River, Inc. reserves the right to make changes in prices, colors, materials, equipment and specifications at anytime without notice and assumes no responsibility for any error in this literature. All weights shown are approximate. All units are shipped F.O.B. Goshen, Indiana.  
CONSULT YOUR LOCAL DEALER FOR WARRANTY INFORMATION.