



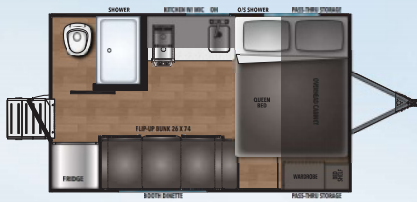
By **Coachmen**

2024 SHASTA COMPACT & i-5 TRAVEL TRAILERS



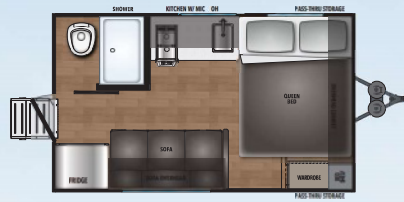
AFFORDABLE QUALITY... RICH HERITAGE – SINCE 1941

## COMPACT FLOORPLANS



**16BH**

LENGTH 16'9" | HEIGHT 10'4" | UVW 3,079 | GVWR 4,000  
HITCH WEIGHT 349 | TANKS: FRESH 40, BLACK 30, GREY 30



**16RE**

LENGTH 16'9" | HEIGHT 10'4" | UVW 2,964 | GVWR 4,000  
HITCH WEIGHT 302 | TANKS: FRESH 40, BLACK 30, GREY 30



**18BH**

LENGTH 23'1" | HEIGHT 10'6" | UVW 3,400 | GVWR 5,050  
HITCH WEIGHT 350 | TANKS: FRESH 40, BLACK 30, GREY 30



**18FQ**

LENGTH 23'1" | HEIGHT 10'6" | UVW 3,489 | GVWR 5,050  
HITCH WEIGHT 375 | TANKS: FRESH 40, BLACK 30, GREY 30



**TST TPMS IS STANDARD EQUIPMENT AND FACTORY INSTALLED!**



**"Air Carries the Load"**  
and TST's TPMS provides your family with peace of mind, knowing your tires are safely inflated before, during and after your trip!

**TST CUSTOMER SUPPORT:**  
info@TSTtruck.com | (770) 889-9102

### STANDARDS FOR COMPACT SINGLE AXLE

#### COMPACT PACKAGE INCLUDES

- Tire Pressure Monitoring System
- 6 Gal Gas/Elec DSI Water Heater
- Black Tank Flush
- Microwave Oven
- 13.5 A/C
- Seamless Countertops
- Solar & Back-up Camera Prep
- 4 Stabilizer Jacks
- 10 cu ft Residential Style Refer (4.5CUFT on 14BH and 16RE)
- Bluetooth Portable Speaker
- Battery Disconnect
- 20# LP Bottle
- Under-Mount Kitchen Sink
- Roadside Assistance

#### EXTERIOR OPTIONS

- Spare Tire & Carrier
- Aluminum Wheels
- 17" Griddle & Grill Combo
- Power Tongue Jack IPO Manual
- 200 Watt Solar/ 30 AMP Controller
- Solid Step

#### INTERIOR OPTIONS

- 8 cu ft Gas/Elec Refer
- #### HEATING/COOLING OPTIONS
- 15K BTU A/C IPO 13,500

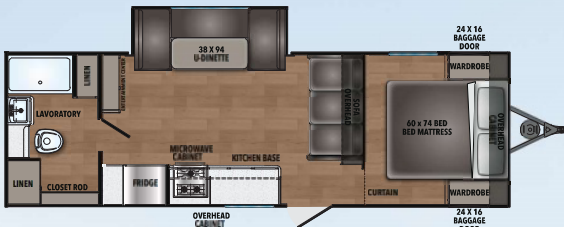


FOR MORE INFORMATION, PICTURES, AND 360 VIRTUAL TOURS VISIT SHASTARVING.COM



FOLLOW US





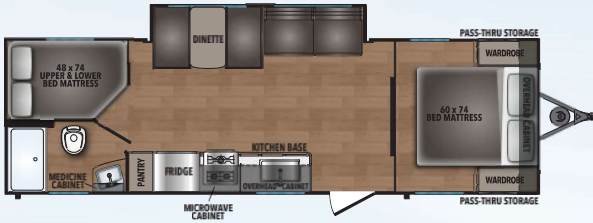
525RB

LENGTH 30'0" | HEIGHT 11'3" | UVW 5,055  
GVWR 7,500 | HITCH WEIGHT 752  
TANKS: FRESH 40, BLACK 30, GREY 30



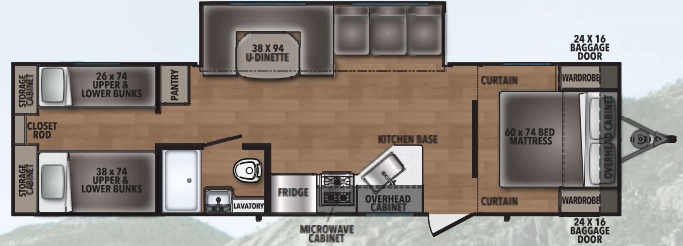
526BH

LENGTH 29'7" | HEIGHT 11'3" | UVW 4,525  
GVWR 7,500 | HITCH WEIGHT 535  
TANKS: FRESH 40, BLACK 30, GREY 30



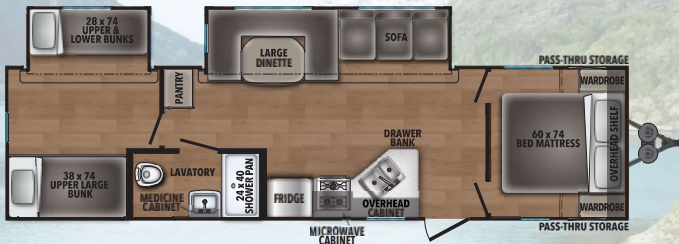
526DB

LENGTH 31'0" | HEIGHT 11'3" | UVW 5,198  
GVWR 7,580 | HITCH WEIGHT 662  
TANKS: FRESH 40, BLACK 30, GREY 30



530QB

LENGTH 35'4" | HEIGHT 11'5" | UVW 6,136  
GVWR 7,716 | HITCH WEIGHT 716  
TANKS: FRESH 40, BLACK 30, GREY 30



532DS

LENGTH 33'1" | HEIGHT 11'5" | UVW 6,829  
GVWR 9,567 | HITCH WEIGHT 767  
TANKS: FRESH 40, BLACK 30, GREY 30

**STANDARDS FOR i-5 EDITION**

**BASE CAMP PACKAGE INCLUDES**

- Tire Pressure Monitoring System
- 6 Gal Gas/Elec DSI Water Heater
- Black Tank Flush
- Microwave Oven
- 13.5 Ducted A/C
- Seamless Countertops
- Bluetooth Portable Speaker
- Solar & Back-up Camera Prep
- Monitor Panel
- Battery Disconnect
- 4 Stabilizer Jacks
- 10 cu ft Residential Style Refer
- 20# LP Bottle
- Roadside Assistance

**EXTERIOR OPTIONS**

- Spare Tire & Carrier
- 200 Watt Solar/ 30 AMP Controller

**INTERIOR OPTIONS**

- 8 cu ft Gas/Elec Refer

**HEATING/COOLING OPTIONS**

- 15K BTU A/C IPO 13,500
- 50 AMP with 2nd Prep
- 2nd 13.5K A/C with 50AMP Service (26 and Larger)





# CUSTOMER SERVICE IS OUR #1 PRIORITY!



### PRE-DELIVERY INSPECTION

20,000 square feet of quality assurance. The bare essentials for a premium product. This state-of-the-art facility gives immediate daily feedback to production for quality assurance in every unit built.

**FREE MEMBERSHIP**  
to Forest River Owners' Group

[www.forestriverfrog.com](http://www.forestriverfrog.com)



## SHASTA HISTORY

- 1941** – Robert Gray built the first Shasta to be used as mobile military housing in California.
- 1951** – Shasta produced what would become the most popular travel trailer of the era, The Toaster on Wheels, featuring the iconic Shasta Wings.
- 1972** – W.R Grace Company buys Shasta from Robert Gray. At this time, Shasta was the largest seller of RV's in the US.
- 1976** – Coachmen Industries buys Shasta RV from W.R. Grace.
- 2010** – Shasta re-emerged as a division of Forest River.
- 2015** – Shasta introduced the 1961 Airflyte re-issue campers.
- 2021** – Celebrating 80 Years of Excellence!



FOLLOW US



Learn More  
Scan this barcode using a QR Reader on your smart phone to learn more about Forest River.



A Berkshire Hathaway company.

### SHASTA OWNER "DIGITAL KIT" APP

Now you can have your Owner's Manual with you wherever you are. Download our FREE App from the App Store or Google Play and you'll have the information right at your fingertips.



YOUR SHASTA DEALER:



### 24/7 EMERGENCY ROADSIDE ASSISTANCE WITH VEHICLE PURCHASE\*

- |                 |                         |
|-----------------|-------------------------|
| TOWING          | WINCH-OUT               |
| JUMP-STARTS     | MOBILE MECHANIC         |
| TIRE CHANGES    | TECHNICAL               |
| FLUID DELIVERY  | SUPPORT                 |
| LOCKOUT SERVICE | DEALER LOCATOR SERVICES |



\*VALID FOR 1 YEAR FROM DATE OF PURCHASE

### CUSTOMER SATISFACTION



[www.ForestRiverBuyLocal.com](http://www.ForestRiverBuyLocal.com)

All information contained in this brochure is believed to be accurate at the time of publication. However, during the model year, it may be necessary to make revisions and Forest River, Inc., reserves the right to make all such changes without notice, including prices, colors, materials, equipment and specifications as well as the addition of new models and the discontinuance of models shown in this brochure. Therefore, please consult with your Forest River, Inc., dealer and confirm the existence of any materials, design or specifications that are material to your purchase decision. © Copyright 2023 Shasta, a Division of Forest River Inc – All Rights Reserved.

**Shasta Recreational Vehicles**  
105 14th Avenue • Middlebury, IN 46540 • (574) 825.7178  
[www.ShastaRVing.com](http://www.ShastaRVing.com)