

# MIRADA

BY COACHMEN



# DON'T SETTLE FOR MIDDLE-OF-THE-ROAD.

MIRADA IS FOR MOTORHOME ENTHUSIASTS WHO APPRECIATE THE FINER ASPECTS OF HIGHWAY LIFE — AT A SURPRISINGLY AFFORDABLE PRICE.



Entertaining is a breeze with a beautifully appointed kitchen. The exterior kitchen (available in select floor plans) and outdoor entertainment system are perfect for taking the party outside.

There's even room for the kids to sleep over with the drop-down cabover bunk.



## INTERIOR DÉCOR COLOR SELECTIONS



Carnegie



Heron

## INTERIOR WOOD COLOR SELECTIONS



White Velvet



Chocolate Cherry





Photography features the  
Mirada 350S floorplan.



Equipped with a comfortable king mattress and designer headboard with coordinating bedspread and shams, Mirada's bedroom is the perfect place to sleep after a day in the woods or on the town.

The bedroom features a 32" LED TV, spacious wardrobe and side tables to keep clutter at bay.

The Coach-Pap™ Station allows for storage of CPAP machines and other electronics, located in the cabinet above the bed.

Built from stainless steel and porcelain, the bathroom is both appealingly designed and super-easy to clean.



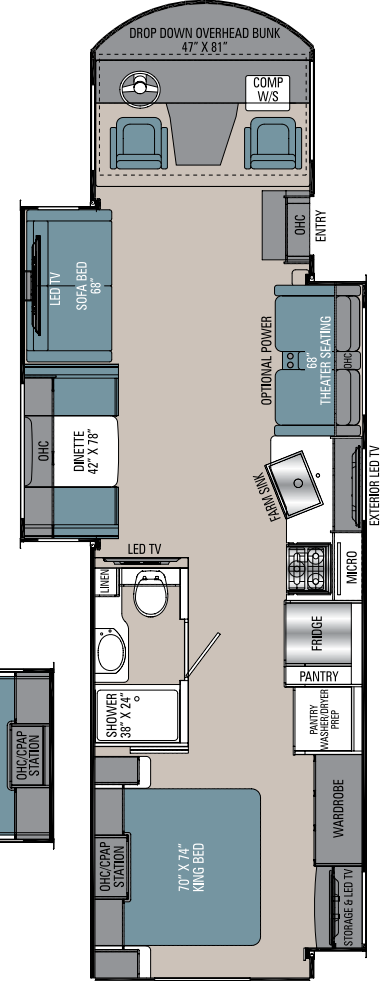
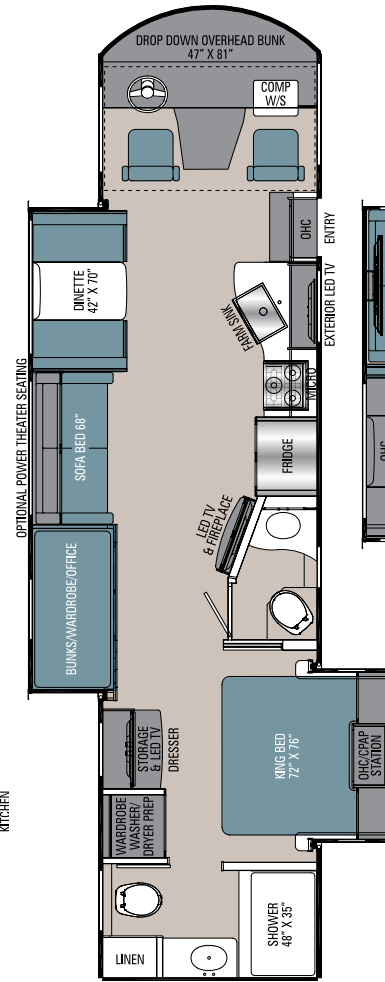
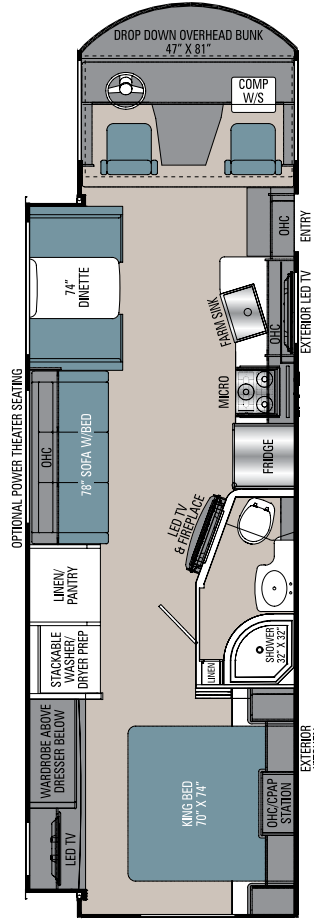
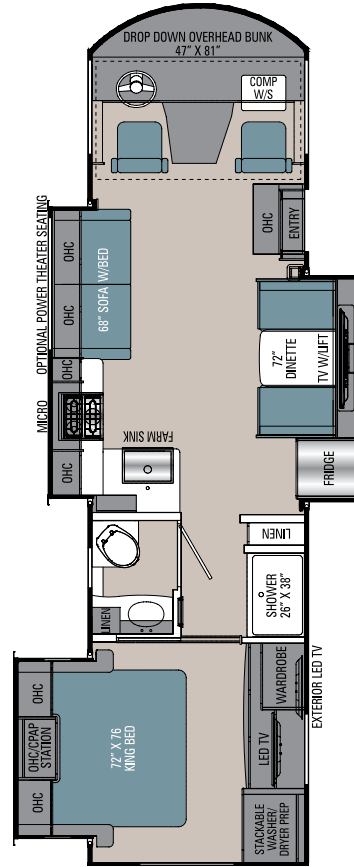
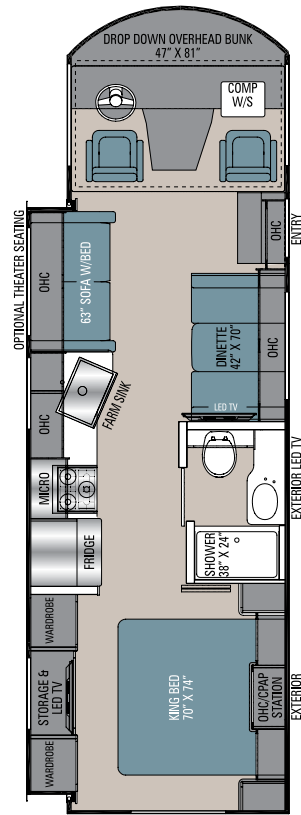
You'll find hardwood cabinet doors in the galley and living areas, providing an elegant feel in the Mirada.

The Mirada is equipped with optional power theater seating that has heat, massage, light and recline functions.

Convert the sofa into a bed to provide even more sleeping capacity.

# FLOORPLANS

Mirada includes five floorplan options, so you'll have no trouble choosing the one that suits you perfectly.





## MIRAD SPECIFICATIONS

CLASS A GAS	29FW	315KS	32LS	35ES	35OS
FORD ENGINE V-8 7.3L 3-VALVE	350 HP/468 TRQ	350 HP/468 TRQ	350 HP/468 TRQ	350 HP/468 TRQ	350 HP/468 TRQ
WHEEL BASE	190"	228"	228"	242"	242"
GVWR	18,000 lbs	22,000 lbs	20,500 lbs	22,000 lbs	22,000 lbs
GCWR	23,000 lbs	26,000 lbs	26,000 lbs	26,000 lbs	26,000 lbs
GAWR FRONT	7,000 lbs	8,000 lbs	7,500 lbs	8,000 lbs	8,000 lbs
GAWR REAR	12,000 lbs	15,000 lbs	13,500 lbs	15,000 lbs	15,000 lbs
FUEL CAPACITY	80 gal	80 gal	80 gal	80 gal	80 gal
LP GAS CAPACITY	20 gal	20 gal	20 gal	20 gal	20 gal
FURNACE (BTUs)	30,000	30,000	30,000	30,000	30,000
EXTERIOR LENGTH (w/o Ladder)	30' 7"	33' 1"	34' 10"	36' 10"	36' 10"
EXTERIOR HEIGHT (w/A/C)	12' 5"	12' 7"	12' 5"	12' 5"	12' 5"
EXTERIOR WIDTH	102"	102"	102"	102"	102"
FRESH WATER	50 gal	70 gal	70 gal	70 gal	70 gal
GREY WATER	46 gal	46 gal	45 gal	45/45 gal	45 gal
BLACK WATER	46 gal	46 gal	45 gal	45/46 gal	45 gal
WATER HEATER	6 gal	10 gal	6 gal	6 gal	6 gal
AWNING SIZE	20'	8' & 12'	15' & 10'	17'	20'

**GVWR (Gross Vehicle Weight Rating)** is the maximum permissible weight of the unit when fully loaded. It includes all weights, inclusive of all fluids, occupants, cargo, optional equipment and accessories. For safety and product performance do NOT exceed the GVWR.

**GCWR (Gross Combined Weight Rating)** is the maximum permissible loaded weight of your motor home and any towed trailer or towed vehicle. Actual GCWR of this vehicle may be limited by the sum of the GVWR and the installed hitch receiver maximum capacity rating; see hitch rating label for detail.

**GAWR (Gross Axle Weight Rating)** is the maximum permissible weight, including cargo, fluids, optional equipment and accessories that can be safely supported by each axle.

**UVW (Unloaded Vehicle Weight) \*** is the typical weight of the unit as manufactured at the factory. It includes all weight at the unit's axle(s), including full fuel, all fluids and LP Gas. The UVW does not include cargo, fresh potable water, additional optional equipment or dealer installed accessories.

\*Estimated Average based on standard build optional equipment.

**CCC (Cargo Carrying Capacity) \*\*** is the amount of weight available for fresh potable water, cargo, passengers, additional optional equipment and accessories. CCC is equal to GVWR minus UVW. Available CCC should accommodate fresh potable water (8.3 lbs per gallon). Before filling the fresh water tank, empty the black and gray tanks to provide for more cargo capacity.

\*\* Estimated average based on standard build optional equipment

Each Coachmen motorhome is weighed at the manufacturing facility prior to shipping. A label identifying the unloaded vehicle weight of the actual unit and the cargo carrying capacity is applied to every Coachmen motorhome prior to leaving our facilities.

The load capacity of your unit is designated by weight, not by volume, so you cannot necessarily use all available space when loading your unit.

Actual towing capacity is dependent upon your particular loading and towing circumstances, which includes the GVWR, GAWR and GCWR as well as adequate trailer brakes. Please refer to the Operator's Manual of your vehicle for further towing information.

All information contained in this brochure is believed to be accurate at the time of publication. However, during the model year, it may be necessary to make revisions and Coachmen reserves the right to make all such changes without notice, including prices, colors, materials, equipment and specifications as well as the addition of new models and the discontinuance of models shown in this brochure. Therefore, please consult with your Coachmen dealer and confirm the existence of any materials, design or specifications that are material to your purchase decision. 2/21

©Copyright 2021 Coachmen RV a Division of Forest River Inc. – All Rights Reserved.

## STANDARD FEATURES

### INTERIOR APPOINTMENTS

Solid Surface Kitchen Countertop  
Premium Linoleum Throughout  
Brushed Nickel Hardware  
Hardwood Cabinet Doors/Flat Panel  
Self-Closing Ball Bearing Drawer Guides  
Throughout  
Frameless Tinted Windows with Safety Glass  
Reclining/Swivel Pilot Seats  
Sofa with Hide-A-Bed (Where Applicable)  
Solar Privacy Shades Throughout  
Easy Clean Cockpit Floor  
Power Windshield Shade with Manual Side Shade

### INTERIOR EQUIPMENT

10" Touch Screen Radio AM/FM Radio  
with Bluetooth Apple CarPlay and Android  
Auto Link Enabled  
Pre-Wired for Satellite Dish  
Exterior Cable TV Jack and Tailgater Satellite Jack  
LP Leak Alarm and Smoke Detector  
Carbon Monoxide Detector  
Fire Extinguisher  
King Jack TV - Radio Antenna  
40" LCD TV Main Coach (29FW, 32LS, 35ES)  
50" LCD TV Main Coach (35OS, 315KS)  
Fireplace Electric (32LS, 35ES)  
Charging Station for Electronic Devices

### GALLEY

High Rise Kitchen Faucet  
Stainless Steel Farmhouse Sink  
Solid Surface Sink Covers  
Stainless Residential Refrigerator  
(32LS, 35ES, 35OS, 315KS)  
Stainless Steel, Large Double Door Refrigerator  
12 Volt (29FW)  
Stainless Steel 3-Burner Range with Glass Cover  
Stainless OTR Microwave  
Tile Backsplash

### BATH AND WATER

Stainless Lavatory Sink  
Porcelain Toilet with Foot Flush  
One Piece ABS Shower Surround  
Glass Shower Door  
Power Bath Vent  
6-Gallon Gas/Electric D.S.I. Water Heater  
Demand Water Pump  
Skylight Over Shower  
Stackable Washer/Dryer Prep  
(32LS, 35OS, 35ES, 315KS)  
Whole Coach Water Filter (Exc. CSA)

### SLEEPING

King Bed  
CPAP Cabinet  
Designer Headboard  
32" LCD TV Bedroom  
Power Drop-Down Front Bunk Bed  
Bunk-Office-Wardrobe Room (35ES Only)

### ELECTRICAL/HEATING/AC

LED Interior Lighting  
30'-50-Amp Power Cord  
55-Amp, 110/12-Volt Power Converter  
GFI Circuit  
Outside Receptacle (DS)  
Emergency Start Switch  
Lighted Trunk Boxes  
Exterior LED Strip Light  
30,000 BTU E.I. Furnace  
Dual 15,000 BTU A/C with Heat Pump  
Dual Coach Batteries  
5.5 Onan Generator  
Coach Command Center  
Automatic Transfer Switch  
1200W Inverter (32LS, 315KS, 35ES, 35OS)  
Auto Generator Start (32LS, 315KS, 35ES, 35OS)  
100W Solar Panel with Controller  
(Aftermarket Upgradeable to 265W)

### AUTOMOTIVE/EXTERIOR

Ford F53 Chassis 7.3L V8  
Tilt and Telescoping Steering Wheel  
Cruise Control  
Traction Control  
Sunload Sensor with Auto Dimming  
Dash Lighting  
Intermittent Wipers  
Dash Air Conditioning  
19.5 Radial Tires (N/A 315KS)  
22.5 Radial Tires with Aluminum Rims  
(315KS Only)  
Rear Mud Flaps Only  
Power Entrance Step-Double  
Full Basement with Pass Thru Storage  
Radius Trunk Doors with Slam Latch  
Fiberglass Front Cap and Rear Cap  
Dead Bolt Lock-Entrance Door  
26" Radius Entry Door  
Power Patio Awning with Speakers  
5,000 Towing Hitch with 7-Way Plug (29FW)  
8,000 Towing Hitch with 7-Way Plug  
(32LS, 35OS, 35ES, 315KS)  
High Definition Back Up and Side Cameras  
Rear Mounted Roof Ladder  
Power Heated Mirrors  
Automatic Leveling Jacks  
Slide-Out Room Awning(s)  
20-Gallon LP Tank  
Valve Stem Extenders  
Exterior Kitchen (29FW, 32LS)  
Computer Work Station at Passenger Seat  
High Gloss "Oyster" Gelcoat Sidewalls  
(with Azdel™ Superlite Composite)  
Crowned, Laminated Fiberglass Roof  
(with Azdel™ Superlite Composite)  
Exterior Propane Hook-Up  
Outside Entertainment Center with TV  
Exterior Bluetooth - TV Audio Speakers  
Auxiliary Dash Fans  
Auxiliary Driving Lights

## OPTIONAL FEATURES

### INTERIOR COLOR SELECTIONS

Carnegie  
Heron

### INTERIOR WOOD COLOR SELECTIONS

White Velvet  
Chocolate Cherry

### EXTERIOR COLOR SELECTIONS

Full Body Paint

- Phantom
- Shadow
- Ghost
- Cullinan

### OPTIONAL FEATURES

Power Theater Seating (N/A 29FW)  
Manual Theater Seating (29FW)  
Washer/Dryer Stackable  
(32LS, 35OS, 35ES, 315KS)  
6-Way Power Driver Seat  
Diamond Shield Paint Protection -  
(Required with Full Paint)  
CSA Up-fit  
CD-MVSA (Canadian Motor Vehicle Safety Act)<sup>1</sup>

Notes:

<sup>1</sup> Mandatory For All Canadian Provinces

## EXTERIOR COLOR OPTIONS



Partial Paint



Full Body Paint - Phantom



Full Body Paint - Shadow



Full Body Paint - Ghost



Full Body Paint - Cullinan



[www.ForestRiverBuyLocal.com](http://www.ForestRiverBuyLocal.com)



## SCAN HERE

To see available  
Standards, Options  
and Features!



Coachmen RV, a Division of Forest River, Inc.,  
A Berkshire Hathaway Company

423 N. Main St., P.O. Box 30, Middlebury, IN 46540

To learn more about Coachmen RV and our  
products and see how Coachmen is making the  
easy life easier, visit [www.coachmenrv.com](http://www.coachmenrv.com)



**24/7 EMERGENCY  
ROADSIDE ASSISTANCE  
WITH VEHICLE PURCHASE\***

---

<p>TOWING JUMP-STARTS TIRE CHANGES FLUID DELIVERY LOCKOUT SERVICE</p>	<p>WINCH-OUT MOBILE MECHANIC TECHNICAL SUPPORT DEALER LOCATOR SERVICES</p>
-------------------------------------------------------------------------------------------	------------------------------------------------------------------------------------------------



\*VALID FOR 1 YEAR FROM DATE OF PURCHASE



**Learn More**  
Scan this barcode using  
a QR Reader on your  
smart phone to learn  
more about Forest River.



A Berkshire Hathaway company.