



Providence

Nothing is impossible.



350HP



THIS TIME IS YOURS. REVEL
IN THE MOMENT AND LET YOUR
TRUE COLORS SHOW. WHY
WHISPER WHEN YOU CAN SCREAM?
WHY JUST TRAVEL WHEN
YOU CAN ADVENTURE? IT'S ALL UP
TO YOU. TAKE ADVANTAGE.





*Providence, 39L shown with Sand interior decor
and Plantation Cherry wood finish.*

Room to Enjoy.

Providence has lots to enjoy with it's stylish design and luxurious accommodations. Traveling takes on new meaning in this sophisticated RV, boasting tall 7' ceilings for a spacious atmosphere wherever you are. Enjoy the living area, with comfortable

Ultraleather™ Flexsteel® furniture with a lifetime warranty on the frame providing a high-end luxurious atmosphere while you explore the road. Triple and quad slide-out options give you more room to travel in comfort. Take advantage of this truly remarkable RV.



OVERHEAD STORAGE

is an ideal place to keep board games, books or anything else for your travels.

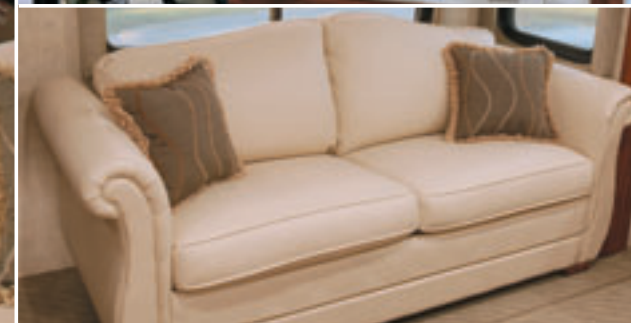
CENTRAL VACUUM

is a very convenient feature to have handy for cleaning up quickly (optional).



OPTIONAL FREE-STANDING DINETTE TABLE AND CHAIRS

seat four comfortably thanks to the addition of its removable center leaf (shown here). Two additional chairs are provided to seat six.



FRONT ENTERTAINMENT CENTER

includes a 27" flat screen TV with a combo VCR/DVD player with a surround-sound home theater system for the ultimate entertainment experience.

SOFA SLEEPER

(optional) features a comfortable air mattress for a good night's rest, and luxurious Ultraleather™ that is stain resistant and easy to clean.



Providence

Five Stars.

You really can enjoy a four star meal, thanks to Providence's well appointed galley. The large Norcold® stainless steel refrigerator not only looks great, but is the perfect place for storing food, and comes standard with an anti-frost feature. You can prepare almost anything thanks to a

high output 3-burner stove, and a powerful convection microwave oven, capable of cooking steaks, fish or a whole chicken in a fraction of the time compared to an oven. A premium residential grade stainless steel double sink makes for easy clean up while looking fantastic.



THE PULL-OUT GALLEY EXTENSION conveniently locks in place and expands your workspace in the galley when you're preparing a meal.



SOLID SURFACE COUNTERTOPS look great, are non-porous, easy to clean and are scratch and stain resistant.

RETRACTABLE WAND FAUCET features elegantly designed single-lever control with dispensers for soap and hand lotion.



OVERHEAD STORAGE IN THE GALLEY features adjustable shelving and are deep enough to accommodate full-size plates. The shelves are lined to prevent scratching the cabinets.

UNDER SINK STORAGE features convenient pull-out baskets for easy access to your cleaning supplies.



THE PANTRY features pull-out baskets for convenient loading and unloading of your non-perishable goods (select models).







Absolute Comfort.

A good night's sleep is always enjoyable in Providence's luxurious bedroom. Feel pampered by the Restonic® queen-size pillow top innerspring mattress for the ultimate in comfort. Fashionable decor including deluxe fabrics for the matching bedspread and pillows shams

give the bedroom a high end feel, while beautiful wood cabinetry, night stands and reading lights make the bedroom feel like a plush hotel suite. In the bathroom, enjoy residential accommodations like a stainless steel sink and elegant solid surface countertops.



A MIRRORED DOOR WARDROBE comes equipped with lighting, residential racks, wide organizers and is ventilated and lined with cedar to keep clothes smelling fresh and moth-free.



THE BEDROOM WINDOW SEAT is a comfortable place to relax, and features underneath storage for extra linens or towels (available on select floor plans).



THE ELEGANT GLASS ENCLOSED SHOWER features a skylight and integrated towel racks just like home.



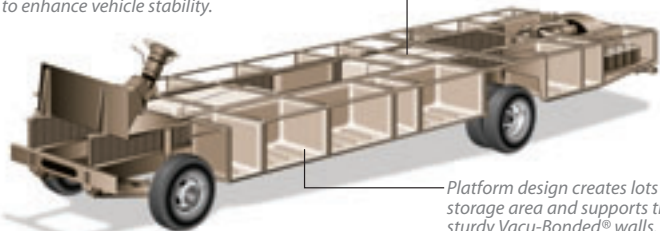
A 20" FLAT SCREEN TV conveniently swivels to your liking for comfortable viewing.

THE WASHER/DRYER COMBO (optional) makes laundry a breeze, and is concealed in a cabinet.



Providence

Holding tanks are positioned in the bottom center of the platform to enhance vehicle stability.



Holding tanks are enclosed between the upper and lower basement floors. This allows them to be heated to prevent freezing in cold weather.

Platform design creates lots of storage area and supports the sturdy Vacu-Bonded® walls.

POWER PLATFORM CONSTRUCTION

Fleetwood's patented Power Platform begins with two 10-in. steel I-beams welded lengthwise to the chassis. From the beams, steel outriggers extend outward. Together, they create a basement for fluid tanks and storage while supporting the floor, walls and roof with a rigid metal frame. This complements the chassis to make it even stronger.

* Drawings are for illustrative purpose only to highlight aspects of motor home construction. Actual motor home design depends on model and is subject to change.

A 2 STAGE DUPONT® PAINT PROCESS

(full-paint is standard) is carefully applied for maximum durability and a sleek exterior look. This process ensures only the best in quality and appearance.

DUAL AIR CONDITIONING UNITS

Providence™ has maximum cooling capacity and plenty of storage because its A/C units are mounted on the roof and not in the basement.

4 POINT AUTOMATIC LEVELING SYSTEM

levels your Providence while parked with a one-button push, or a do-it-yourself manual override.

Vehicle shown in Mocha exterior graphics.

STORAGE COMPARTMENTS

are lighted and include single paddle metal latches, gas-lift strut supports, stainless-steel hinges and insulated aluminum doors.

THE EXTERIOR SPOTLIGHT

(optional) is a great feature to provide additional light at night when exploring your surroundings.



EZ STORE COMPARTMENTS

move with the slide-out for convenient use, and are lined with a special polyethylene material that is stain resistant and easy to clean. For '06 the compartment door is wider making it easier to store and access larger items.

OPTIONAL PULL-OUT GRILL

and kitchenette will make you the hit of the campground. Burgers and drinks anyone?

STYLISH WRAP-AROUND DASH

features tilt and telescoping steering wheel for your convenience, read-at-a-glance gauges and easy-to-reach controls. A 6-Disc CD player with Sirius® satellite radio are optional (6 month subscription is included).

350 HP CATERPILLAR® C7 DIESEL ENGINE makes hill climbing and towing easier.

EXTERIOR ENTERTAINMENT CENTER (optional) features an AM/FM radio with CD player and a 20" TV on a convenient pull out shelf.

KEYLESS REMOTE ENTRY is a very convenient feature that makes locking and unlocking your RV easy as the push of a button.

THE TRIP METER features convenient indicator lights that monitor gas mileage, fuel efficiency, engine levels, temperature and oil pressure.

THREE EXTERIORS, THREE INTERIORS. THE CHOICE IS YOURS.

For 2006, mix and match from three full-body paint exterior graphics and three interior fabric motifs—With each interior, you can choose from one of three wood finishes. 27 combinations in all.

PROVIDENCE EXTERIOR COLOR CHOICES



Mocha



Iron

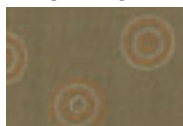


White Diamond

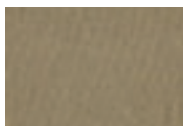
PROVIDENCE INTERIOR COLOR CHOICES

SUNSTONE

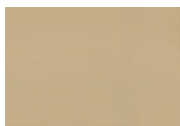
Living/Dining Room



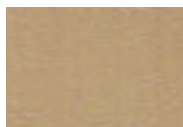
Dinette Cushions & Throw Pillows



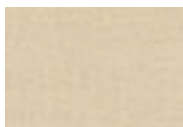
Throw Pillows


Ultraleather™ Sofa,
Driver & Front
Passenger Seats

Bedroom



Bedspread



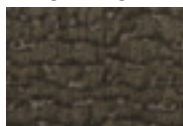
Pillow Shams



Throw Pillows

SLATE

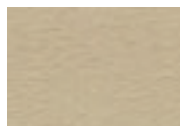
Living/Dining Room



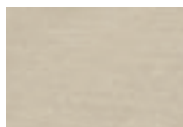
Dinette Cushions & Throw Pillows



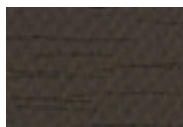
Throw Pillows


Ultraleather™ Sofa,
Driver & Front
Passenger Seats

Bedroom



Bedspread



Pillow Shams



Throw Pillows

SAND

Living/Dining Room



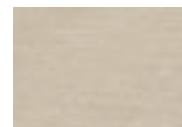
Dinette Cushions & Throw Pillows



Throw Pillows


Ultraleather™ Sofa,
Driver & Front
Passenger Seats

Bedroom



Bedspread



Pillow Shams



Throw Pillows

INTERIOR WOOD FINISHES



Plantation Cherry



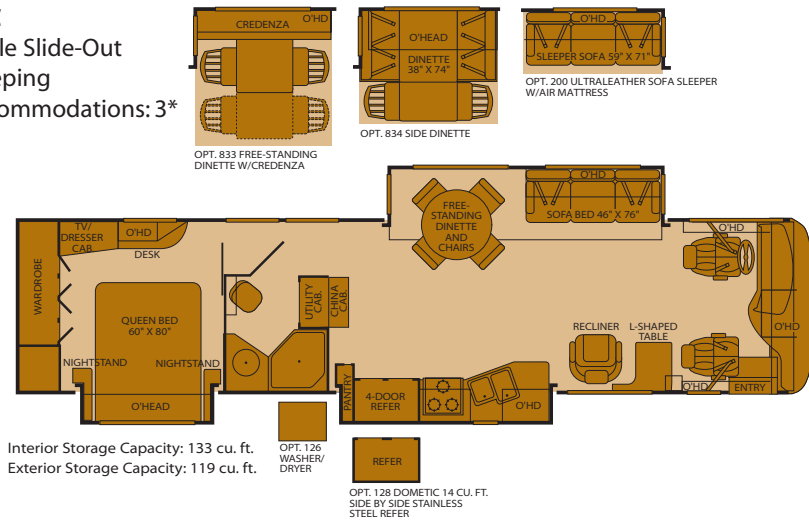
Fairfield Maple



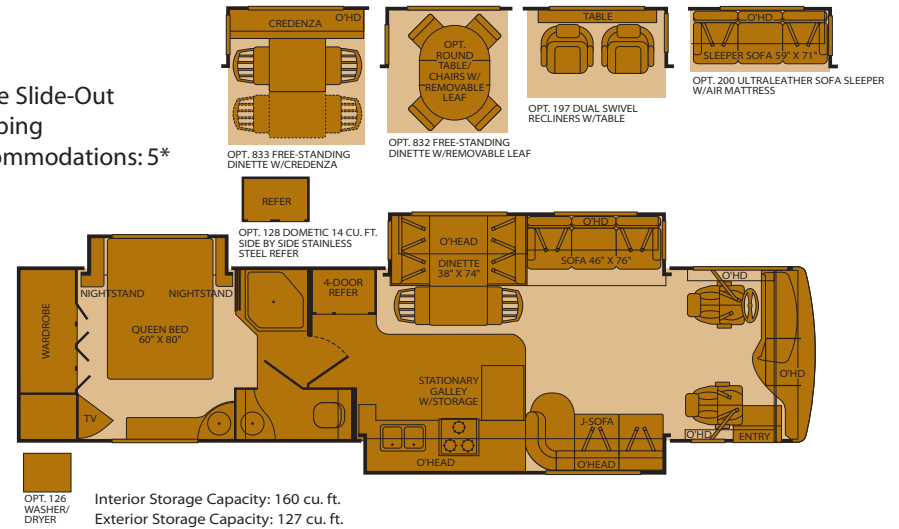
Anderson Walnut

Floor Plans

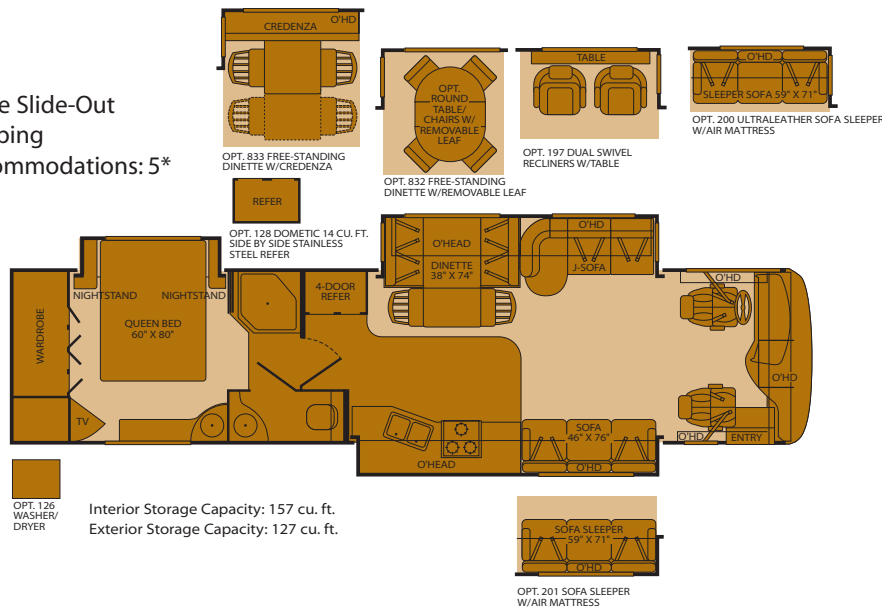
39C Triple Slide-Out Sleeping Accommodations: 3*



39J Triple Slide-Out Sleeping Accommodations: 5*



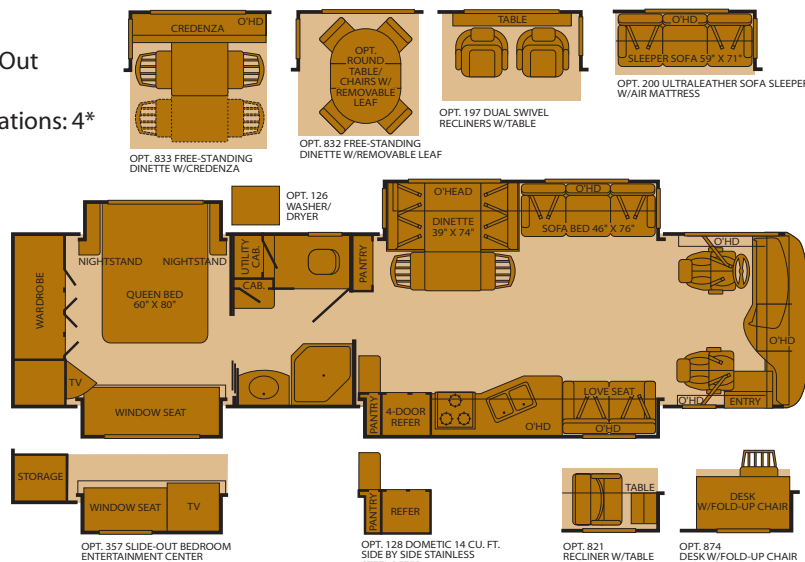
39S Triple Slide-Out Sleeping Accommodations: 5*



Seatbelt configuration may vary depending on options chosen.

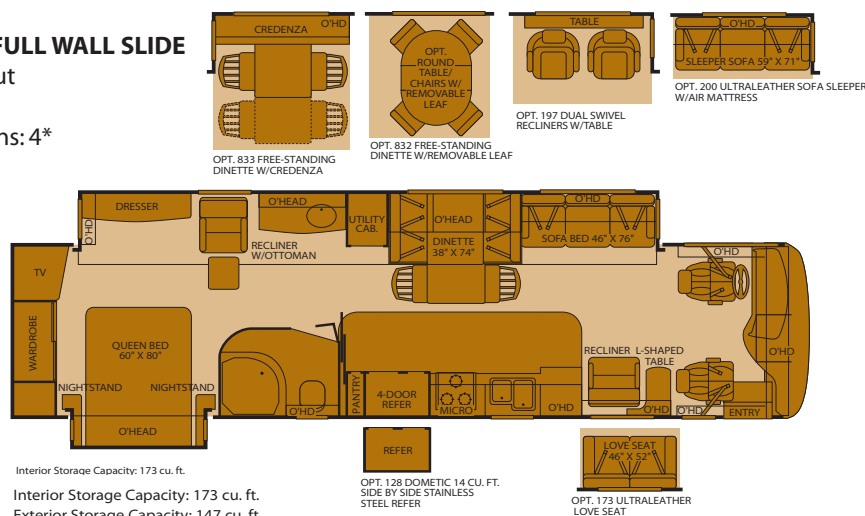


39L Quad Slide-Out Sleeping Accommodations: 4*



Interior Storage Capacity: 182 cu. ft.
Exterior Storage Capacity: 127 cu. ft.

39V FEATURING A FULL WALL SLIDE Double Slide-Out Sleeping Accommodations: 4*



Interior Storage Capacity: 173 cu. ft.
Interior Storage Capacity: 173 cu. ft.
Exterior Storage Capacity: 147 cu. ft.

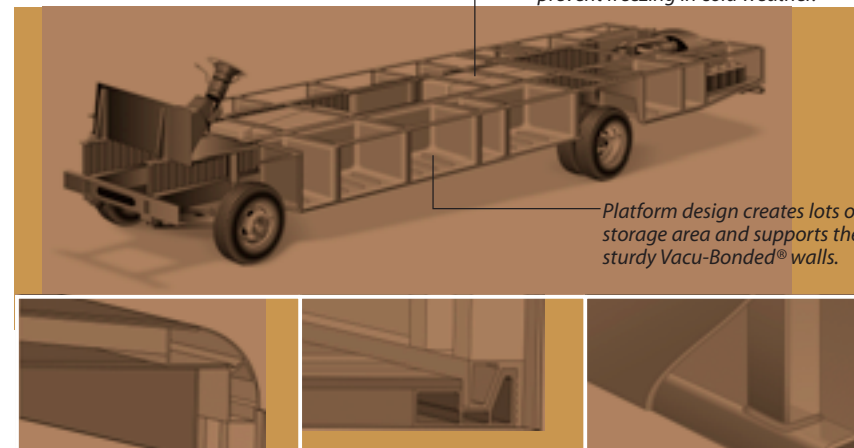
*Sleeping accommodations are based on designed sleeping areas and may be greater than Sleeping Capacity Weight Rating (SCWR) found on the Cargo Carrying Capacity label located in each RV. Sleeping accommodations are based on standard layout. Optional furniture may increase or decrease sleeping accommodations.

POWER PLATFORM CONSTRUCTION

Fleetwood's patented Power Platform begins with two 10-in. steel I-beams welded lengthwise to the chassis. From the beams, steel outriggers extend outward. Together, they create a basement for fluid tanks and storage while supporting the floor, walls and roof with a rigid metal frame. This complements the chassis to make it even stronger.

Holding tanks are positioned in the bottom center of the platform to enhance vehicle stability.

Holding tanks are enclosed between the upper and lower basement floors. This allows them to be heated to prevent freezing in cold weather.



Inter-locking Ceiling-to-Sidewall Connection

Inter-locking Floor-to-Sidewall Connection

Vacu-Bond® Sidewall Construction

Setting The Standard In Motor Home Quality.

Fleetwood® prototypes are exposed to thousands of miles of durability testing. Those components that don't survive are redesigned until they do. This sets our standard in safety and durability.

Fleetwood's patented Power Platform supports the body with a rigid frame that reinforces the chassis to make it even stronger. This allows Fleetwood to offer triple and quad slide-outs.

For each outer wall, Fleetwood uses one seamless, solid piece of its exclusive Tuff-Coat® fiberglass composite. It resists UV rays, cracks and impacts. Our products look newer longer and that's a big plus at resale time.

To assure a strong, weather-resistant structure, Fleetwood Vacu-bonds® all sidewalls, floors and ceilings to a durable aluminum or steel frame. The Vacu-bond® process is unmatched by many competitors.

Fleetwood sinks and shelves are designed to handle full-size kitchenware. Few competitors can say the same.

Drawings are for illustrative purpose only to highlight aspects of motor home construction. Actual motor home design depends on model and is subject to change.

Standard Features

Interior

THROUGHOUT

- 84" Interior Ceiling Height
- Dual Roof-Mounted A/C
- High Efficiency w/Solar Panel on Front A/C
- Solid Surface Countertops and Sink Covers
- Whole Coach Water Filtration System

DRIVER CONVENIENCE

- High-Output Auto A/C Heater Combo
- Power Driver/Front Passenger Sun Visors
- Adjustable 3-Point Seat Belts at Driver & Front Passenger Seats
- AM/FM Radio w/CD/Cassette Player
- Auxiliary Start Circuit
- Backlit Switches & Gauges

LIVING ROOM

- DVD Home Theater Sound System w/Hidden Surround-Sound Speakers
- Easy-Sweep Laminate Flooring at Entry
- Space Saving Coffee Table

GALLEY

- Deluxe Roller Bearing, Full Extension Drawer Guides
- Solid Surface Countertop, Sink & Range Covers
- Window Over Sink
- 1.4 cu. ft. Convection Microwave Oven w/Stainless-Steel Front
- 3-Burner, High-Output Cooktop w/Sealed Burners
- Adjustable Cabinet Shelves (Select Cabinets)

BEDROOM

- Cabinet Storage Above the Bed
- Restonic® Deluxe Pillow Top Innerspring Mattress
- Ventilated Rear Wardrobe w/Cedar Lining, Carpeted Floor & Wire Organizer

BATHROOM

- Cabinet Toe Kicks
- Coordinated Bath Accessories
- Fan-Tastic® Power Roof Vent

SAFETY/CONVENIENCE

- Carbon Monoxide Detector/Alarm
- Fire Extinguisher

- 10-Gallon, Quick-Recovery Water Heater w/Direct Spark Ignition (Gas/Electric)
- 20,000/25,000 BTU Dual Furnaces
- 20,000/30,000 BTU Dual Furnaces (39V Only)
- Crown Molding w/Decorative Corner Caps

- Battery Shut-Off Switch
- CB Radio Ready
- Cruise Control
- Driver/Front Passenger Ultraleather™ Captain's Chairs w/Reclining Back/Slide Controls/Power/Heated/Adjustable Arms
- Driver Side Manual Pull Down Shade

- Ultraleather™ Sofa Bed
- 27" Stereo TV in Overhead
- DSS/Stationary Auto Locating Satellite Dish (Covered)
- Flexsteel® Residential Seat Styling
- Hi-Fi VCR

- Coffee Maker
- Fan-Tastic® Power Roof Vent
- Glass Panel Cabinet Doors (Select Cabinets)
- Laminate Floor Tile
- Large, Double Stainless Steel Sink
- Light/Power Range Hood
- Norcold® 12 cu. ft. 4 Door Stainless Steel Refrigerator w/Ice Maker and Water Dispenser
- Raised-Panel Cabinet Doors

- 20" TV w/Swivel
- Bedroom Radio & Speakers
- Bedspread w/Decor Pillows
- Coffered Ceiling
- Mirrored Wardrobe Doors
- Remote Generator Start

- Hardwood Bath Door/Trims
- Laminate Floor Tile
- Lighted Assist Handle

- Propane Detector/Alarm
- Smoke Detector/Alarm

- Day/Night Pleated Shades
- Demand Water Pump w/Filter (Gas/Electric)
- Plush Wall-to-Wall Carpet w/Carpet Pad
- Vinyl Padded Ceiling
- Wall Switches (Includes Switches for Ceiling Lights & Vents)
- Water Heater Bypass

- Passenger Seat w/Power Foot Rest & Armrest w/Integrated Magazine Rack
- Radio Switch-Main/Auxiliary Power
- Soft-Surface Automotive Dash w/Area for Laptop GPS (Laptop & GPS Not Included)
- Tilt/Telescoping Steering Wheel

- J-Lounge Ultraleather™ Sofa (Select Models)
- Telephone Jack
- TV Antenna
- Ultraleather™ Swivel Recliner Free Standing (Select Models)

- Single-Lever Galley Faucet w/Pullout Sprayer
- Six-Person Pull-Out Dinette Table (Select Models)
- Slide-Out Dinette Bins w/Latches
- Soap Dispenser
- Under-Galley Shelving & Wastebasket

- Second Phone Jack
- Wardrobe Lighting

- Molded Shower Enclosure w/Skylight
- Porcelain Toilet w/Water Saver
- Stainless-Steel Sink

Exterior

THROUGHOUT

- 4-Point Automatic Hydraulic Levelers
- Choice of Three Colorway Graphics
- Full Body Paint
- Weather Pro Power Awnings (Patio Awning Includes Wind Sensor)
- 120V/12V AC/DC Converter
- 120V/12V Wire Raceways

AUTOMOTIVE

- 350-HP Cat® C7 Engine w/Rear-Mounted Radiator
- Dual Fuel Fill (One on Each Side)
- Freightliner® Chassis
- 10,000-lb. Weight-Distributing Hitch Receiver w/7-point Electrical Hook-up†
- Aluminum Rims

SAFETY/CONVENIENCE

- Lighted Exterior Entry Assist Handle
- 20' Sewer Hose
- Central Electrical Panel
- Doorside Patio Receptacle

STORAGE

- EZ-Store Compartment on Living Area Slide-Outs
- Continuous One-Piece Compartment Bulb Seal
- Gas-Lift Strut Supports

BODY STRUCTURE

- Aluminum Interlocking Floor/Wall/Ceiling Framing
- Coach Vibration Isolators

- 2000-Watt Inverter w/Remote
- 50-Amp Service
- 7.5kW Onan® Quiet Diesel Generator
- Awning Rail/Drip Molding (Both Sides)
- Dual Battery Charge Control
- Dual Pane Windows w/Screens
- Fiberglass Front Quarter Panels
- Fiberglass Front/Rear Cap

- Fog Lamps
- Large Bonded-in Windshield
- Mud Flaps
- Rear-Vision Camera
- Single Motor Denso® Windshield Wipers w/Wet Arm
- Underhood Utility Light
- Valve Extenders

- Entry Door w/Screen Door & Deadbolt Lock
- Four 6V/Deep-Cycle House Batteries
- Keyless Entry Remote
- Park Cable Receptacle

- Hidden, Stainless-Steel Latch Rods
- Insulated Aluminum Luggage Doors w/Single Paddle Metal Latches & Stainless-Steel Hinges
- Lighted Luggage Compartments

- Color Coordinated Royal Tuff-Ply Roof
- Heated Water & Holding

- w/High-Mounted Taillights
- Fiberglass Wheel Well Trims
- Front Protective Mask
- Remote/Heated Exterior Rear-View Mirrors
- Torque Windows in Bedroom
- Utility Compartment w/Exterior Shower
- Water Pump Switch (3 Locations)

† The chassis manufacturer recommends the installation of a supplemental brake control system to activate the brakes on the vehicle or trailer you are towing. Hitch receiver ratings expressed are maximum for the hitch receiver installed and may require the purchase of additional equipment that is dependant on the weight of the towed load. Consult with hitch receiver manufacturer for further information.

- Porch Light (Doorside)
- Power Entry Step
- Roof Ladder
- Toilet Tank San-T-Flush™ System

- Rotomolded Polyethylene Luggage Compartments
- Spare Tire Compartment (N/A 39V) (Spare Tire Not Included)

- Tank Compartments
- Radius Roof w/Ducted A/C

Options

THROUGHOUT

- AM/FM Stereo w/6-Disc CD Player w/Sirius® Satellite Radio (6 Month Subscription Included)
- Automatic Generator Start System
- Central Vacuum System
- CSA Package
- Heat Pumps
- Spot Light w/Remote Control
- Washer/Dryer
- Water Heater 16 Gallon Output

GALLEY

- 14 cu. ft. Dometic® Frost Free Refrigerator
- 3-Burner Range w/Oven
- Free Standing Dinette w/Credenza
- Free Standing Table & Chairs

LIVING ROOM

- Dual Free-Standing Ultraleather™ Recliners
- Recliner w/Table (39L)
- Ultraleather™ Sofa Sleeper w/Air Mattress

EXTERIOR

- Entertainment Center w/20" TV and Stereo (Select Models)
- Pull-Out Grill and Kitchenette (Select Models)

BEDROOM

- Bedroom Entertainment Center w/27" TV and Home Theatre (39L)
- Desk (39L)
- Restonic® Rest-On-Air Dual-Control Mattress

Fleetwood Advantages

- Complete TuffPEX® Plumbing System
- Energy Management System (EMS) w/Soft-Start

- Vacu-Bond® Upper/Lower Floors
- Vacu-Bond® Walls w/Smooth High-Gloss Exterior Tuff-Coat® Fiberglass

Fleetwood Exclusives

- Power Platform Construction
- Full Wall Slide (Patent Pending)

* Bold Denotes Fleetwood's Key Features

Weights and Measurements

FREIGHTLINER® CHASSIS	39C	39J	39L	39S	39V
Engine Displacement (Liters)	7.2	7.2	7.2	7.2	7.2
Wheelbase (Inches)	252	252	252	252	252
GVWR (lbs) ¹	31,000	31,000	31,000	31,000	31,000
Front GAWR (lbs) ²	12,000	12,000	12,000	12,000	12,000
Rear GAWR (lbs) ²	19,000	19,000	19,000	19,000	19,000
Base Weight (lbs) ³	22,605	22,605	22,900	22,605	22,900
GCWR (lbs) ⁴	41,000	41,000	41,000	41,000	41,000
Hitch Rating Weight (lbs) [†]	10,000	10,000	10,000	10,000	10,000
Tongue Weight (lbs) [†]	1,000	1,000	1,000	1,000	1,000
Fuel Capacity (gal)	90	90	90	90	90

DIMENSIONS AND CAPACITIES					
Overall Length ⁵	39' 2"	39' 2"	39' 2"	39' 2"	39' 2"
Overall Height (with A/C)	12' 8"	12' 8"	12' 8"	12' 8"	12' 8"
Overall Width (maximum) ^{6,7}	102"	102"	102"	102"	102"
Interior Height (maximum)	84"	84"	84"	84"	84"
Interior Width (maximum)	96"	96"	96"	96"	96"
Fresh Water Holding Tank (gal)	84	86	86	86	86
Grey Water Holding Tank (gal)	50	50	50	50	50
Black Water Holding Tank (gal)	50	50	50	50	50
Appliance Propane Tank (gal) (WC) ⁸	38	38	38	38	38
Water Heater Tank (gal)	10	10	10	10	10

Liquid Weight Reference: Water (gal) = (8.3 lbs/3.8 kgs) Fuel (gal) = (7.1 lbs/3.2 kgs) Propane (gal) = (4.2 lbs/1.9 kgs)

Metric Conversion: Multiply pounds x 0.453 to obtain kilograms. Multiply gallons x 3.785 to obtain liters.

CHASSIS

Frame: Freightliner® XC-Series	Transmission: Allison® 3000 MH, 6-Speed w/Electronic Shifter
Engine: Cat® C7 350 HP	Alternator Amps: 160-Amp Delco
Torque: 860 lb-ft @ 1440 RPM	Tires: Goodyear® 275/70R 22.5H

1. GVWR (Gross Vehicle Weight Rating) is the maximum permissible weight of this fully loaded motor home. The GVWR is equal to or greater than the sum of the unloaded vehicle weight plus the cargo carrying capacity.

2. GAWR (Gross Axle Weight Rating) is the maximum permissible loaded weight a specific axle is designed to carry.

3. Base Weight is the estimated weight of the motor home without fuel, options, water, cargo or passengers.

4. GCWR (Gross Combined Weight Rating) is the value specified by the motor home manufacturer as the maximum allowable loaded weight of this motor home with its towed vehicle. Towing and braking capacities may be different. Refer to Fleetwood and chassis manufacturer's manuals for complete information.

5. Length taken from front bumper to rear bumper (excludes accessories).

6. Excludes safety equipment and awnings.

7. Motor homes feature a body-width over 96" which will restrict your access to certain roads. Before purchasing, you should research any state and/or province road laws which may affect your usage.

8. Tank manufacturer's listed water capacity (WC). Actual propane capacity is 80% of water listing as required by the safety code.

[†] The chassis manufacturer recommends the installation of a supplemental brake control system to activate the brakes on the vehicle or trailer you are towing. Hitch receiver ratings expressed are maximum for the hitch receiver installed and may require the purchase of additional equipment that is dependant on the weight of the towed load. Consult with hitch receiver manufacturer for further information.

IMPORTANT — PLEASE READ: Product information, photography and illustrations included in this publication were as accurate as possible at the time of printing. For further product information and changes, please visit our website at www.fleetwoodrv.com or contact your local Fleetwood dealer. Prices, materials, design and specifications are subject to change without notice. All weights, fuel, liquid capacities and dimensions are approximate. Fleetwood has designed its recreational vehicles to provide a variety of uses for its customers. Each vehicle features optimal seating, sleeping, storage and fluid capacities. The user is responsible for selecting the proper combination of loads (i.e. occupants, equipment, fluids, cargo, etc.) to ensure that the vehicle's capacities are not exceeded.

What Drives You?

Maybe it's feeling like you're the only one on Earth. Perhaps it's the unique sense of closeness with the great outdoors. Or, it might be the joy that comes from spending quality time with family and friends. Whatever the reason, we know that you have a strong drive to experience everything that comes with spending time on the road. And for more than 50 years, we've shared that passion with you. Because we're RV enthusiasts ourselves, you can see our passion in the vehicles we design and build. Own a Fleetwood, and you'll feel like you're not just traveling, but embarking on an experience unlike any other. Set your own course for adventure and get out there and explore the world around you. Once you do, you'll see what it is that drives us — it's you.

RV OWNERCARE* is a limited one-year/15,000-mile coach warranty and three-year/50,000-mile structural warranty, whichever occurs first, and it is fully transferable for the first 12 months. RV OWNERCARE is one of the RV industry's most comprehensive programs and includes systems, appliances, components and construction, with no deductible and no service charge. RV OWNERCARE coverage is provided from a company that will be around in the future to service your needs. See your nearest Fleetwood dealer for a full explanation of benefits and restrictions.

FLEETWOOD TRAVELCADE CLUB As a Fleetwood owner, you're eligible to become a member of our owners' group, Fleetwood Travelcade Club. It's a perfect way to meet other Fleetwood owners who love to travel across America and share in the RV lifestyle. Call (877) 577-2560 and join the fun! Or visit www.fleetwood.com/clubs to learn more.



www.fleetwoodrv.com

*For complete info see your Fleetwood dealer. ©2005, Fleetwood Enterprises, Inc.
Printed in the USA. Inventory control number PRO06B1 5/05.

FLEETWOODRV.COM To locate a dealer near you, visit our website or call 1-800-444-4905. We can also be contacted at Fleetwood Customer Relations, P.O. Box 7638, Riverside, CA 92513-7638.

IMPORTANT—PLEASE READ Product information, photography and illustrations included in this publication were as accurate as possible at the time of printing. For further product information and changes, please visit our website at www.fleetwoodrv.com or contact your local Fleetwood dealer. Prices, materials, design and specifications are subject to change without notice. All weights, fuel, liquid capacities and dimensions are approximate. Fleetwood has designed its recreational vehicles to provide a variety of uses for customers. Each vehicle features optimal seating, sleeping, storage and fluid capacities. The user is responsible for selecting the proper combination of loads (i.e.: occupants, equipment, fluids, cargo, etc.) to ensure that the vehicle's capacities are not exceeded.

Your local Fleetwood dealer is:

