



## FIFTH WHEELS

SUPERIOR CONSTRUCTION • SUPREME LUXURY

SABRE FIFTH WHEELS





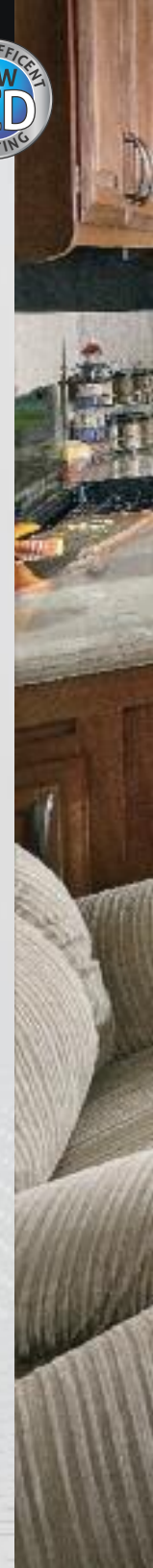


# FIFTH WHEELS



Sabre Silhouette blends classic luxury with spacious open floorplans. Flush-floor slide rooms create comfortable, homestyle living and are loaded with standard features. These mid-profile fifth wheels are a great value, built with six-sided aluminum frame construction.

**312 RKDS** *This large kitchen has lots of counterspace and plenty of storage. It comes well equipped with an oversized pantry, 22" oven with flush mounted glass range cover, and full extension drawer glides. The Select Package option includes LG solid surface countertops and a goose neck pull-out faucet.*







**312 RKDS** This spacious living area's standard features include a 32" TV, hardwood fascia around the slide rooms and large window that open to optimize cross ventilation. Shown in Mink décor with optional La-Z-Boy® recliners, tri-fold sleeper sofa and free standing dinette.





# FIFTH WHEELS



**312 RKDS** This luxury bedroom features a 60" x 80" queen bed, generous dresser drawers with full extension drawer glides, hardwood slide fascia, windows in the slide room for cross ventilation and dual reading lights. Shown in Mink décor.





# SUPERIOR SABRE SILHOUETTE FEATURES



Hardwood vanity with large sink, toothbrush holder, soap dish and residential size shower. (Available on some models)



Optional tri-fold sofa



Full extension drawers



Large 22" oven with flush mounted glass range cover



32" HD LCD TV



Axles with Super Lube® bearings



Hardwood headboard with storage and dual directional reading lights.



6 Cu. ft. Dometic® refrigerator



Pass thru storage with docking station



30 amp detachable cord



Hot water bypass valve



PlatTform™ slide-out floors are moisture resistant



LP quick disconnect



Steel belted radial tires shown with optional aluminum wheels



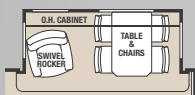
Exterior convenience center houses 110V outlet, cable and satellite hook-ups, hot and cold exterior shower and black tank flush



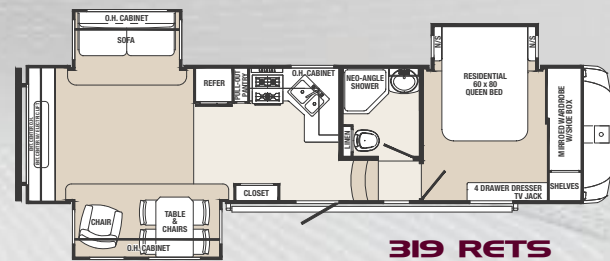
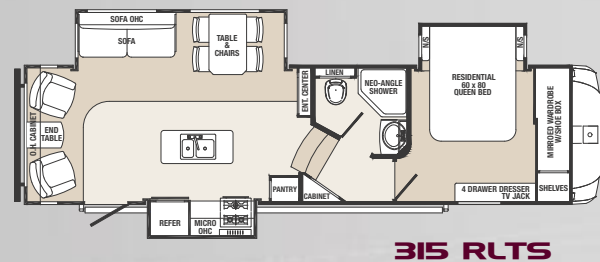
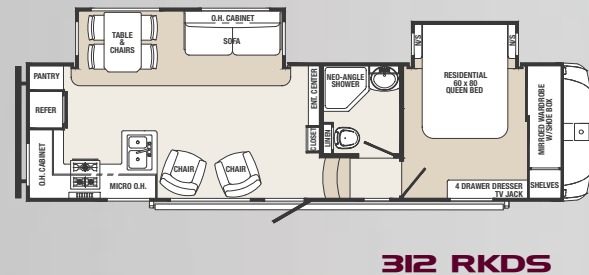
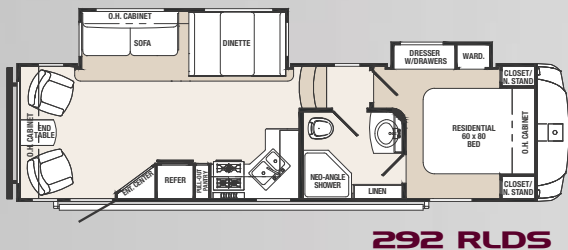
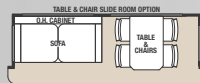
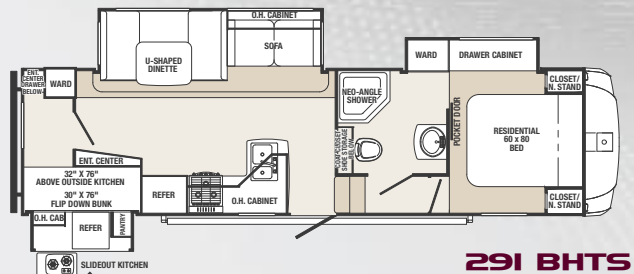
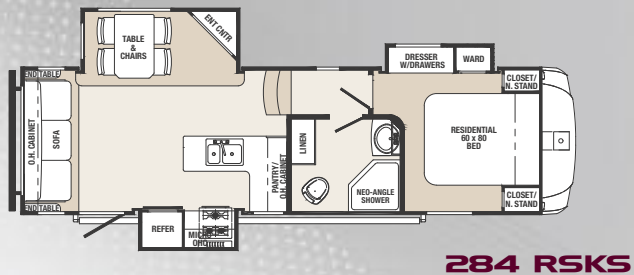
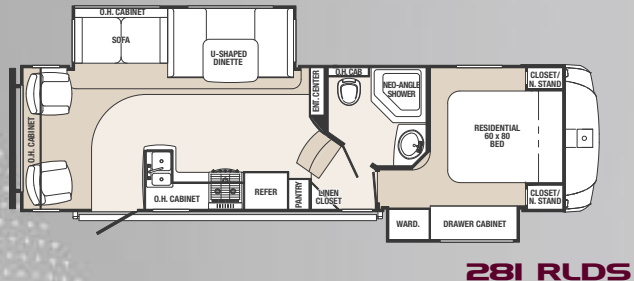
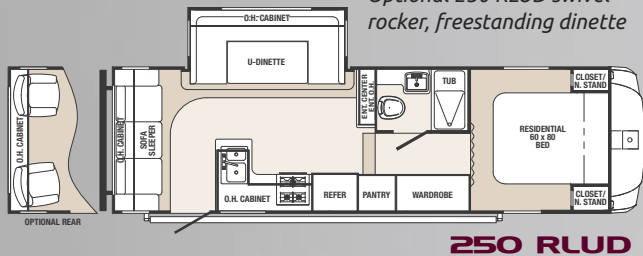
Optional free standing dinette with leaf extension and flip-up storage



# FIFTH WHEELS

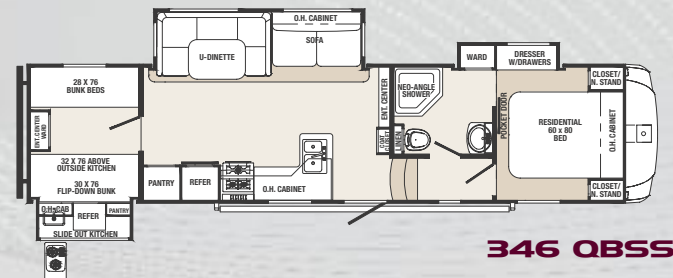
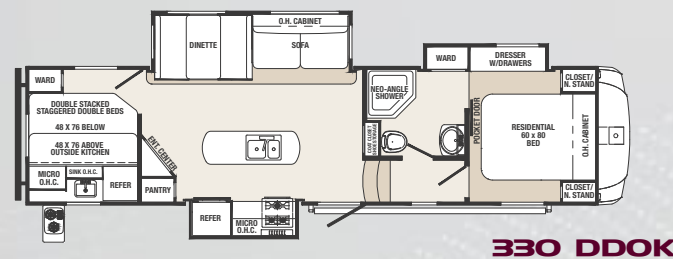
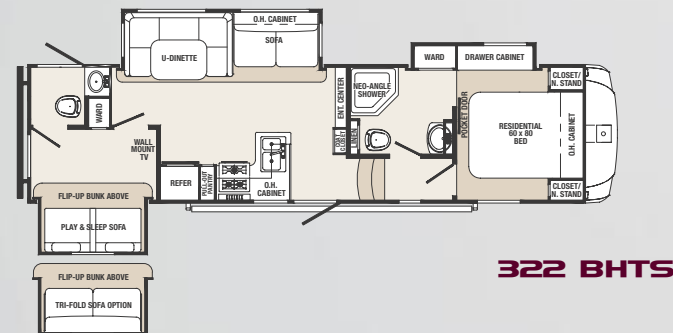
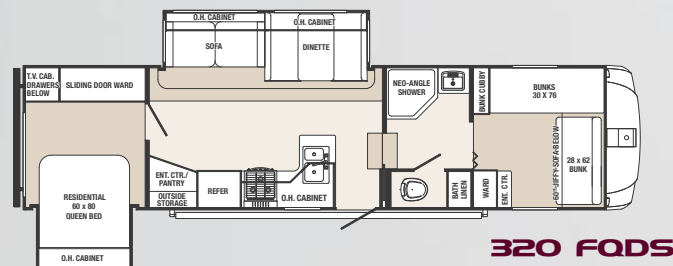


Optional 250 RLUD swivel rocker, freestanding dinette



## SLIDE ROOM OPTION

Available on 281 RLDS, 291 BHTS, 320 FQDS, 292 RLDS, 322 BHTS, 330 DDOK, 346 QBSS





MODEL	250 RLUD	281 RLDS	284 RSKS	291 BHTS	292 RLDS	312 RKDS	315 RLTS	319 RETS	320 FODS	322 BHTS	330 DDOK	346 QBSS
Hitch Weight	1036	1446	1734	1425	1602	1653	1810	TBD	1250	TBD	1770	TBD
Axle Weight	5485	5916	5548	7232	7197	7285	7239	TBD	7330	TBD	7678	TBD
Dry Ship Weight	6521	7362	7282	8657	8799	8938	9049	TBD	8580	TBD	9448	TBD
GVWR	9071	9912	9832	11207	11349	11488	11599	TBD	11130	TBD	11930	TBD
CCC (Cargo Cap.)	2500	2500	2500	2500	2500	2500	2500	TBD	2500	TBD	2432	TBD
Exterior Length	26' 4"	30' 2"	29' 4"	30' 11"	30' 4"	31' 3"	32' 1"	32' 9"	31' 10"	33' 0"	33' 1"	34' 9"
Fresh Water (Gal.)	50	50	50	50	50	50	50	50	50	50	50	50
Black Water (Gal.)	42	42	42	42	42	42	42	42	42	84	42	42
Grey Water (Gal.)	84	84	42	84	84	42	84	84	84	84	84	84
Tire Size (In)	15"	15"	15"	15"	15"	15"	15"	15"	15"	15"	15"	15"
Awning Size	17'	21'	18'	21'	20'	19'	21'	TBD	18'	TBD	18'	TBD

## FIFTH WHEEL STANDARD FEATURES AND OPTIONS

### KITCHEN

Large 6 Cubic Foot Dometic® Refrigerator	S
Residential-Style, Self-Edged Countertop	S
Residential American Stonecast Sink, Under-Mount:	
Withstands 450 Degrees	S
Raised Galley Faucet	S
Food Grade Sink Cover & Cutting Board	S
Full Extension Drawers	S
Ball Bearing Roller Guides	S
Microwave	S
22" Oven	S
Glass Flush Mount Range Cover	S
Silverware Drawer	S
Residential Size Trash Can Location	S
Residential Size Pantry (Most models)	S
110V Outlets Mounted In Dinette & Sofa Area	
For Convenience	S
Free Standing Dinette w/Leaf Extension & Flip-Up	
Storage (Chairs include seat storage)	O

### BATHROOM

12v Ceiling Vent & Fan	S
Sky Dome Over Shower	S
Waterproof Shower Light	S
Residential-Style, Wood Medicine Cabinet	S
Porcelain Toilet w/Foot Flush & "Power Flush Jets"	S
Installed Conveniences: Towel Ring, Soap Dish	
& Toothbrush Holder	S
Air Conditioning Vent In All Bathrooms	S

### BEDROOM

Quilted Bedspread w/(2) Pillow Shams	S
Prewired For Bedroom TV	S
60"X 80" Queen Innerspring Mattress	S
60"X 80" Serta® Mattress	O
Dual Reading Lights Over Bed	S
Large Opposing Windows For Cross Ventilation	S
Storage Under All Beds	S

### AUDIO & VIDEO

32" HD LCD TV (Living room)	SF1
CD/DVD/AM/FM Player (12V for dry camping)	SF2

Stereo Inputs Include: 3.5 mm Audio, SD Card & USB	SF2
(2) Marine Grade Exterior Patio Speakers	SF2
Digital TV Antenna w/Amplifier Booster	S
Rg-6 Satellite Prep	S
Satellite & Cable Hook-Up	S
Exterior Mounted Radio Antenna For	
Improved Reception	S
Slide-Out Patio LCD TV (Select models)	O

### INTERIOR

Top Cabinet Doors: Solid Hardwood,	
w/Arched Raised Panels	SF2
Lower Cabinet Doors: Solid Hardwood,	
w/Square Raised Panels	SF2
LED Lights, Pancake & Recessed Throughout	S
Cell Phone Charging/Organizer Station	S
All Cabinet Doors Utilize Teflon Spacers To	
Prevent Warping, Bending & Cracking	S
Cabinet Face Frames Are Screwed	
(Not stapled together)	S
6'1" Slide-Out Room Height	S
Residential Trekk Linoleum	S
Residential Shaw® Nylon Carpet w/R2x™	S
Carpet Pad	S
Residential Ball Bearing Drawer Guides	S
Flush Floor Slide Rooms (Living area)	S
Pleated Night Shades Throughout	S
Swivel Rocker Chair(s) (Per floorplan)	S
Euro Style Recliner IPO Swivel Rocker Chair	O
La-Z-Boy Recliners IPO Swivel Rockers	O
Tri-fold Sleeper Sofa	O
Beauflor® Linoleum, Plank Wood Pattern,	
w/7 Year Cold Crack Warranty	O

### EXTERIOR

6-Sided Welded Aluminum Structure; Sidewalls,	
Rear Wall, Front Wall, Floor, Roof, Slide-Outs	SC
3/8" Thick Walk On Roof Decking	SC
Fold-Away Entry Door Handle	SF2
Deep Tint Safety Glass Windows	SF1
Heated & Enclosed Underbelly	S

Aerodynamic Fiberglass Front Cap/Fifth Wheel	
Docking Lights	S
Attic Vents For Roof Ventilation	S
Quick Release Snap Jack Pins Mounted Forward	S
A&E Electric Awning w/Adjustable Arms & LED Lights	S
(2) Patio Safety Lights	S
Safety Step Light At Main Entrance	S
Nitrous Filled Steel Belted Radial Tires	
w/Roadside Assistance	S
Axles w/Super Lube® Bearing System	S
Electric Powered Front Jacks	S
30" Entry Door (Most models)	S
Switchable Interior Light At Each Luggage Door	S
Outside Lp Gas Hook Up w/Quick Connect	S
Crank Down Stabilizer Jacks	S
Flexible 4" Rain Spouts	S
Rear Roof Ladder	O
15" Sumec Aluminum Wheels	O
Bike Rack	O

### UTILITIES

35,000 BTU Furnace w/Automatic Ignition	SF1
6 Gal. DSI Gas/Electric Water Heater w/Quick Recovery	SF1
Hot & Cold Water Exterior Shower	SF1
13,500 BTU Air Conditioner w/Quick Cool Dump	SF1
"Within Reach" Water Heater Bypass Valve	S
Independent Electric Slide-Outs	S
Dual 30 Lb. LP Bottles	S
Convenience Center For Hook-Ups	S
High Capacity In-Floor Heat Ducting	S
Digital Thermostat	S
50 Amp Power Converter w/Smart Fan Cooling	
& LED "Bad Fuse" Indicator	S
30 Amp Service w/Detachable Marine Power Cord	S
Central Command Center w/Tank Monitor	
Enclosed In Cabinet (Most models)	S
Black Tank Flush	S
15,000 BTU Air Conditioner w/Quick Cool	O
5-Function Analog Remote	O

### DECOR

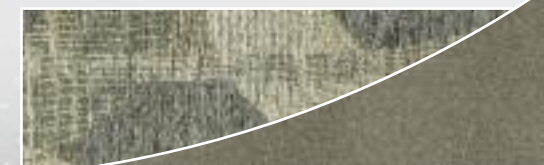
Select your favorite from five designer fabric choices



### BARK



### KHAKI



### MINK



### PEBBLE



### PEWTER

### SELECT PACKAGE Includes these items:

Colored Fiberglass
Painted Front Cap
Solid Surface Galley Counter Top
Wood Step Treads
Ceiling Fan
5.1 Surround Sound
Radiant Insulation
Rear Electric Stabilizer Jacks
5 Function Remote
Flip Down Bike Rack

# TRUE SIX-SIDED ALUMINUM CONSTRUCTION



## PRE-DELIVERY INSPECTION FACILITY

20,000 square feet of quality assurance. The bare essentials for a premium product. This state-of-the-art facility gives immediate daily feedback to production for quality assurance in every unit built.

## 24/7 EMERGENCY ROADSIDE ASSISTANCE

For a worry-free ownership experience Forest River includes one

**Coach-Net®**  
RV Technical & Roadside Assistance

year of Coach-Net RV Technical & Roadside Assistance with each RV purchase. Whether new to the RV lifestyle or an experienced RV enthusiast, Forest River owners have 24/7 access to technical, operational and emergency road service coverage throughout the US & Canada. Coach-Net's fast, dependable service is just a phone call away.



Forest River, Inc. encourages our customers to purchase their Forest River products from a local dealership whenever possible for the following reasons:

- 1) Forest River, Inc. dealers are independently owned and operated businesses so priority service and scheduling is at their discretion and is often provided to customers that purchased their unit at that dealership.
- 2) Purchasing locally allows customers to establish meaningful relationships with a dealer, enhancing the RV experience through assistance with product questions, user tips or RV regulations for your state or country, and much more!
- 3) Canadian customers must meet requirements to bring an RV purchased out of the country to their home. These requirements may involve additional inspections and certifications, taxes and fees. Your local Canadian Dealer is a professional at meeting these requirements.
- 4) Scheduling timely warranty repairs and adjustments through a local dealership provides far greater flexibility and convenience to you, the customer!

It is the goal of Forest River, Inc. that all of our RV owners fully enjoy the RV experience and that customer satisfaction meets or exceeds their expectations!

## SIDEWALL CONSTRUCTION (R-9)

- Gel-Coated Fiberglass including Compartment Doors
- 1/8" Luan Backer
- Welded Aluminum Wall Studs
- High Density Solid Block Foam Insulation
- 1/8" Interior Decorative Board

## ROOF CONSTRUCTION (R-14)

- Vented Attic
- One-Piece EPDM Rubber Roof with 12 Year Warranty
- 3/8" Roof Decking
- EcoBatt Glasswool Insulation
- Aluminum Wrapped AC Duct
- 4-1/4" Tapered Aluminum Roof Trusses
- 1/8" Decorative Ceiling Board

## FLOOR CONSTRUCTION (R-14)

- 5/8" Seamless Dyna Span Floor Decking with Limited Lifetime Warranty
- Welded Aluminum Floor
- Large-Capacity Heat Duct Plenum
- EcoBatt Glasswool Insulation
- DARCO Wrapped Main Floor Moisture Barrier
- Tanks Wrapped in Heat Reflective Insulation
- Corrugated, Puncture Resistant Underbelly



## 315 RLTS

*Sabre Silhouette Fifth Wheels are built to last with true, six-sided aluminum construction*



Sabre Silhouette by Palomino Forest River, Inc.  
2412 Century Drive ■ Goshen, IN 46528  
(269) 432-3271 ■ [www.palominorv.com](http://www.palominorv.com)



## Learn More

Scan this barcode using a QR Reader on your smart phone to learn more about Forest River.



A Berkshire Hathaway company.



**FIFTH WHEELS**  
**YOUR SABRE SILHOUETTE DEALER**

All illustrations and specifications contained in this literature are based on the latest product information at the time of publication. Forest River, Inc. reserves the right to make changes in prices, colors, materials, equipment and specifications at anytime, without notice, and assumes no responsibility for any error in this literature. All weights shown are approximate. All units are shipped F.O.B. point of manufacture. ©Forest River, Inc. 2013 Sabre 12/13