

CRUISER

AIRE

Engineered for super light weight towing, Cruiser Aire brings you blazing innovation in sync with heavy duty construction and durability. Cruiser Aire also offers additional features that pack in all the comforts of home.



STANDARDS

EXTERIOR

- Hard-Shell laminated sidewalls
- 5-sided alumina frame construction
- Aerodynamic front cap (caramel color) with LED accent lights
- One-piece seamless rubber roof covering
- Radius roof line
- Domed roof line (front to back - TT)
- Total Truss roof system
- 30"x72" main entry door
- Lighted triple entry step
- Extendable grab handle at main entry
- EZ lube axles
- Trail Air Equa-Flex suspension enhancement with adjustability
- Nitrogen filled radial tires
- Galvanized wheel well
- Outside kitchen (VBM)
- Super-stor pass through basement storage (FW)
- Slam latch pass through baggage doors
- Manual slide override extends through frame for easy access
- Dura-Cam I beam frame
- Convenience outlet at front awning arm
- Exterior marine grade speakers (2)
- LP cover (TT)
- Dual battery capacity
- Battery disconnect (FW)
- ABS enclosed underbelly

- Forced heat to underbelly
- Heated and enclosed gate valves
- Black tank flush
- Quick recovery 6 gal G/E DSI water heater (17.8 gal/hr)
- Outside shower
- 30 amp detachable power service
- Cable/SAT prep
- Digital TV antenna
- Stabilizer jacks
- Outside grill prep
- Sure-Seal windows
- Roof ladder

INTERIOR

- Lumber core screwed stile cabinetry construction
- Raised panel cabinetry in living/kitchen area
- 70lb steel ball bearing guides, full extension
- Solid wood drawer construction
- Hardwood mullion style fridge front
- Decorative dinette light
- 40" booth dinette (VBM)
- U-dinette with snap up table (VBM)
- Plywood dinette base
- Pots and pans drawers under dinette
- Self igniting 22" oven with 3-burner cook top
- Range cover
- Oak knife rack
- Adjustable pantry shelving
- High impact laminate countertops
- High rise kitchen faucet

- Stainless steel kitchen sink with cover
- Maximum lino
- Tri-fold hide a bed sofa
- Swivel rocker chairs (VBM)
- Slideout sidewall light (VBM)
- OHC above sofa / chairs in slideout
- Decorative wood slide fascias
- Water heater by-pass kit
- EZ winterization kit
- EZ key fob remote (FW)
- Backlit command center for switches
- 65 amp converter with distribution center
- Bath skylight
- 12-volt bath power vent
- Built medicine cabinet
- Glass tub / shower enclosure (VBM)
- Deluxe bedding package
- Full trunk under bed storage
- Plywood bed base with strut assist
- Spacious closets
- Fire extinguisher
- LP/CO2 detector
- Smoke detector

OPTIONS

- 50amp service with 2nd A/C prep
- Electric rear jacks (FW)
- Electric tongue jack (TT)
- Electric stab jacks (TT)
- Rear hitch receiver

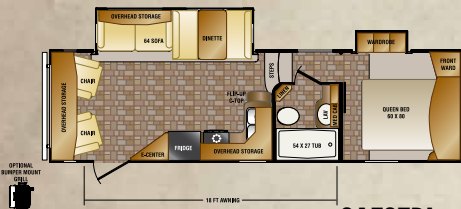
- Bumper mount grill
- Insulated windows
- 8 cu ft refer
- Free standing table and chairs
- Recliners ILO swivel rockers (VBM)

TOUR PACKAGE (MANDATORY)

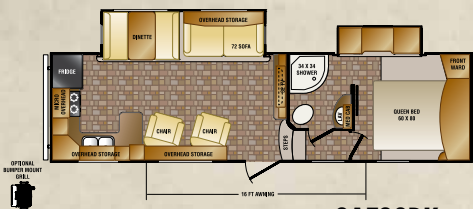
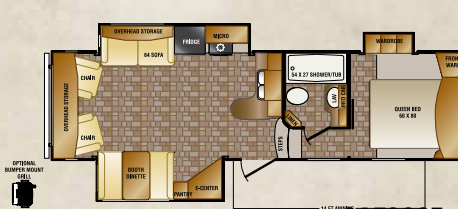
- 6 cu ft refer
- 12-volt multi-media sound system w/Bluetooth
- Cruiser Aire Black Label brand furniture
- Dark tinted safety glass windows
- Dual 30# LP tanks w/auto changeover
- Porcelain toilet with foot flush
- 32" LED TV in living area
- Microwave
- 35,000 BTU furnace
- 15k ducted air system with quick cool
- Spare tire
- Skylight in kitchen
- Pleated night shades throughout
- Thermotek insulation package
- Aluminum rims
- White high gloss sidewalls
- Electric awning with LED light
- Cruiser Aire Black Label brand mattress (60"x80")

CRUISER AIRE FLOOR PLANS

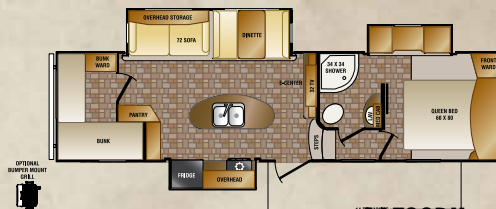
FIFTH WHEELS



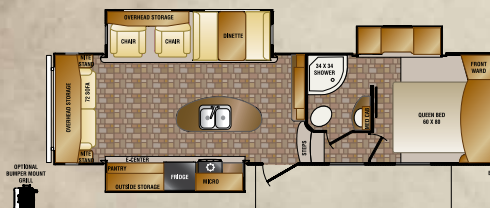
CAF27RL

**CAF28RK**

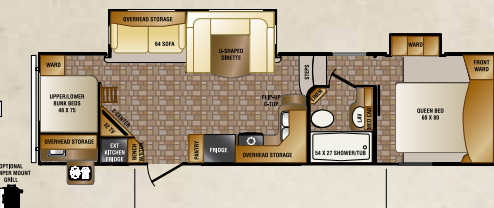
CAF28SE



CAF29BH



CAF29RS

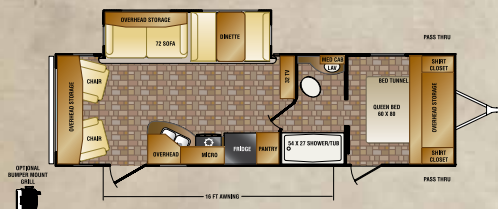


CAF30BH

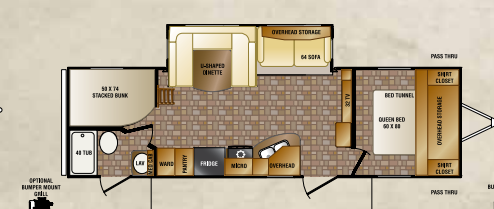


CAF30RE

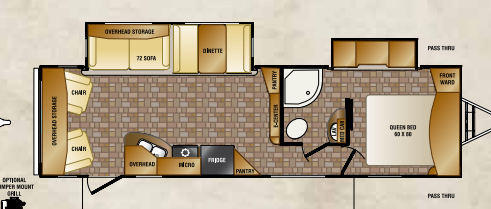
TRAVEL TRAILERS



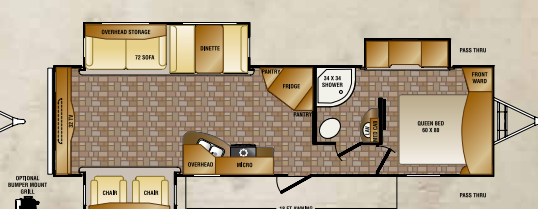
CAT28RL



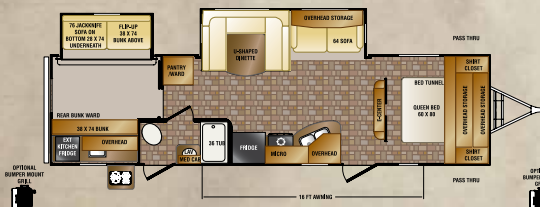
CAT29BH



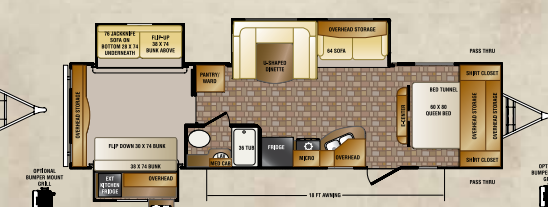
CAT30RL



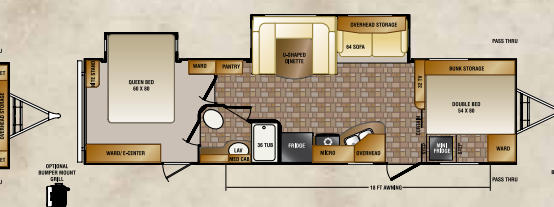
CAT31RE



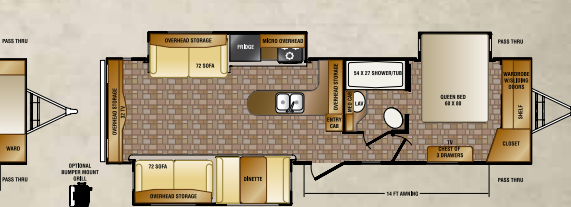
CAT32BH



CAT32QB



CAT33BH

**CAT33RE**

FOR THE LATEST SPECIFICATIONS SEE WEBSITE

Go see more details on construction, features & benefits at: crossroadsrv.com/cruiser

1140 W. LAKE STREET 🏡 TOPEKA, IN 46571 🏡 PH 260 593-3850 🏡 FX 260 593-2088

Standards, options and specifications are subject to change.

CROSSROADS

RECREATIONAL VEHICLES