

# - VALOR -



COURAGEOUSLY BOLD AND DETERMINED MULTI FUNCTIONAL VEHICLES



INDUSTRY RECOGNIZED  
EXCELLENCE



*Obsessed with providing the best RV ownership experience!*





COURAGEOUSLY BOLD AND DETERMINED MULTIFUNCT







MODEL 41V15



ALL MODELS



ALL MODELS

## IONAL VEHICLES

Over a year in the making and driven by feedback from you, Valor delivers the bold mix of features you demand while breaking new ground in the industry and courageously engineering a superior hauler that maximizes comfort, convenience, efficiency, towability and the best ownership experience on the planet. Welcome to your generation of haulers. Go farther, boondock longer, and enjoy the peace of mind that ownership of an ALLIANCE RV affords you.



ALL MODELS





**MODEL 40V13**



All haulers are not created equal. Valor offers distinctly different living spaces to fit your personal style, be it a huge kitchen for the chef in the family, a large entertainment center in the seating area to replay the day on the trails, or a side patio perfect for taking in the outdoors with a cup of coffee. Valor also features unobstructed garages from eleven to fifteen feet long with a multipoint tie down system and a weather resistant ramp door that can double as a rear patio, adding more outdoor living space with the ramp door patio package option.





# VALOR-





# 40,500 BTU EXCLUSIVE HIGH EFFICIENCY AIR CONDITIONING SYSTEM

Triple 13,500 BTU, ultra quiet, independently controlled direct flow AC units maximize cooling capacity.

## 50% MORE EFFECTIVE

## THE BEST HVAC ON THE MARKET!

# Ultra Quiet

- No yelling over a noisy AC to have a conversation or to watch TV.
- Easily Run Two on 30 Amp.
- Run all Three on 50 Amp.



- No fighting over the thermostat. Have it your way in different zones.



## Disruptive Measures:

- Fully Weather Resistant Ramp door – Industry 1st
- 2 x 320 watt solar panels with battery monitor – Industry 1st standard solar panels with a monitor system, enabling customer to see battery life in real time
- Masters of 12 volt – 12 volt power recliners on sofa, 12 volt bedroom TV, 12 volt garage TV, 12 volt Refrigerator, 12 volt LED lighting, 12 volt Stereo and 12 volt Heat Pads for Holding Tanks
- Fully insulated garage with dedicated A/C and heat
- Largest in class furnace – 40,000 BTU
- Most efficient and effective A/C System – Triple A/C units producing 40,500 BTU of cooling power with the least amount of ductwork in the industry
- Flush floor slides – 100% free of carpet
- High Gloss Sidewalls with Azdel Composite Substrate – Lightweight, water and mold resistant.
- Air compressor on board – Industry Exclusive on-board air supply on both exterior sides of the garage.

## 40,000 BTU FURNACE

### + 5,100 BTU FIREPLACE



We are going the extra mile to help ensure your Alliance RV is "Camp Ready". With holding tanks full, Alliance RV hits the open road for a 15-minute "shakedown" test tow that includes bumps, turns and rapid stops. This open road test identifies potential concerns that would have otherwise only shown up when the coach was in transit to you and your dealer. Following the test drive, we bring the coach into our dedicated Performance Audit Bay for another round of systems checks and white glove inspections. Upon a 100% successful Performance Audit, we deem the RV to truly be "Camp Ready"!

### A WARRANTY IS ONLY AS GOOD AS THE COMPANY THAT BACKS IT.

Every Alliance RV is generously backed with a 3-year limited structural and 1-year limited base warranty. Further, what really makes Alliance RV stand out is our willingness to communicate our guiding principle of "Do The Right Thing". We understand there is not a one size fits all solution when it comes to your warranty and service needs. Our ability to keep open lines of communication with both you and your Alliance dealer will help us find a creative service solution for your specific case. Add to this the unique service and warranty programs we have implemented for our Alliance dealers to streamline the approval process and parts delivery times... and the result is our mission of getting our Alliance RV owners back on the road faster and enhancing your RV ownership experience. If you ever want to speak with one of our customer service representatives, please don't hesitate to contact us at (574) 226-0140.





# THE MASTERS of

BOONDOCK LONGER  
Than ever before!

# 12 VOLT

## PACKAGE INCLUDES:

- 100 Amp Hour Lithium Iron Phosphate Battery •
- Battery Monitor System •
- 40 Amp Charge Controller •
- 2x 320 Watt Solar Panels •
- 17 Cubic Foot 12 Volt Refrigerator •

*In addition to more 12 volt systems than similar Haulers on the market*

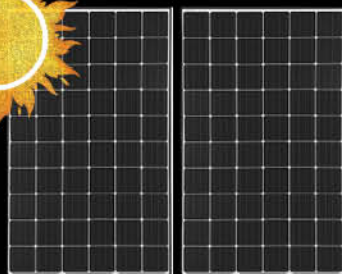
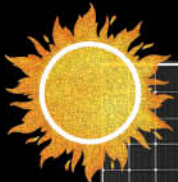
## MORE 12 VOLT SYSTEMS FOR A SUPERIOR BOONDOCKING EXPERIENCE!



Equivalent of two traditional RV batteries and 1/5 the weight!



Know exactly what is really going on with real time monitoring of power usage and battery condition.



640 watts of high efficiency, pure power generation.

Testing shows that our combination of components outperforms traditional solar packages hands down.



17 Cubic Feet



# 12 VOLT

- ✓ 12V Air Compressor
- ✓ 12V Fuel Tank Pump
- ✓ 12V Power Recliners
- ✓ 12V USB Charge Ports
- ✓ 12V Garage TV
- ✓ 12V Bedroom TV
- ✓ 12V Stereo System
- ✓ 12V Antenna
- ✓ 12V LED Lighting
- ✓ 12V Garage Bed Lift
- ✓ 12V Ramp Gate Lock
- ✓ 12V Slide Outs
- ✓ 12V Landing Gear
- ✓ 12V Gas Furnace
- ✓ 12V Water Pump



# SPACE SAVER Upper Deck



Engineers were able to redesign the upper deck to be stronger, while flattening the deck to eliminate the toe breaker steps typically found in this space. Stronger design + flush upper deck = smarter chassis.



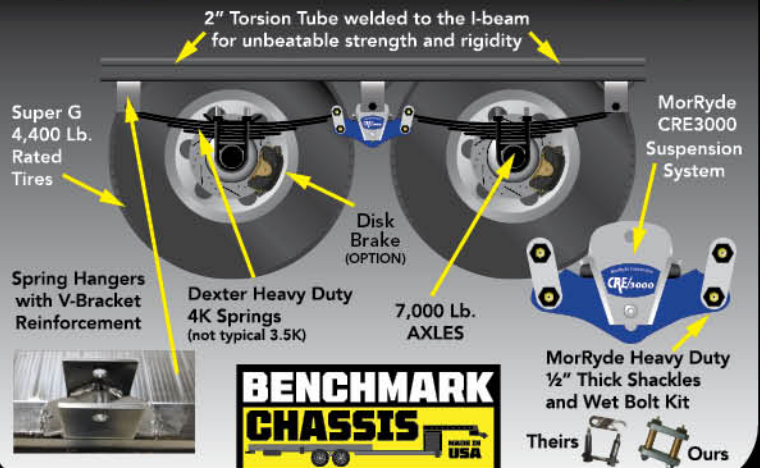
Stronger Design + Flush Upper Deck = Smarter Chassis



We listened to RVers to determine the good, the bad, and the ugly from the people who actually own and frequently use RVs. Overwhelmingly, it was clear that tire blow-outs, insufficient springs, thin shackles, and spring hanger failures were critical areas that needed to be addressed.

We use a next generation advanced frame technology with heavy duty Performance Running Gear. Redesigned from the ground up, the Benchmark Chassis features solid steel 10" I-beam main rails with a 2" torsion tube welded where the running gear attaches, drop frame storage area, flush upper deck design, reinforced goose neck area and a Rota-Flex pin box.

## PERFORMANCE RUNNING GEAR



## INSULATED



## GARAGE FLOOR

FOR MAXIMUM SEASONAL COMFORT

Insulating the garage floor helps keep the garage area comfortable in cold and hot conditions while also reducing noise, making the garage area quieter and more enjoyable for everyone.



## L-Track

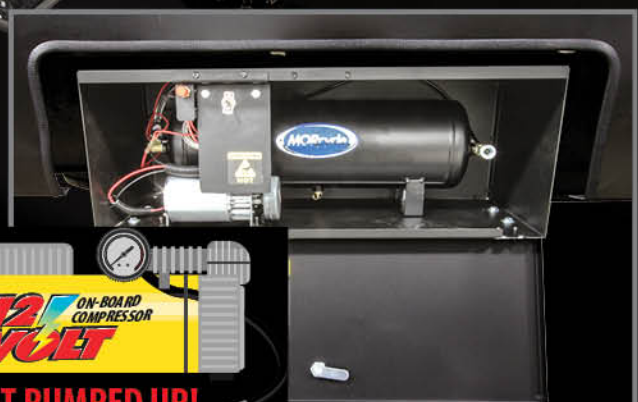
D rings are never where you need them to be for securing items of varying sizes and shapes. Our L-Track offers infinite arrangements of anchor points to tie down almost anything.





# OR-

Ramp doors are not just for loading anymore. Our ramp doors are weather resistant and engineered to give you 60 square feet of elevated patio space attached to the garage.



**GET PUMPED UP!**

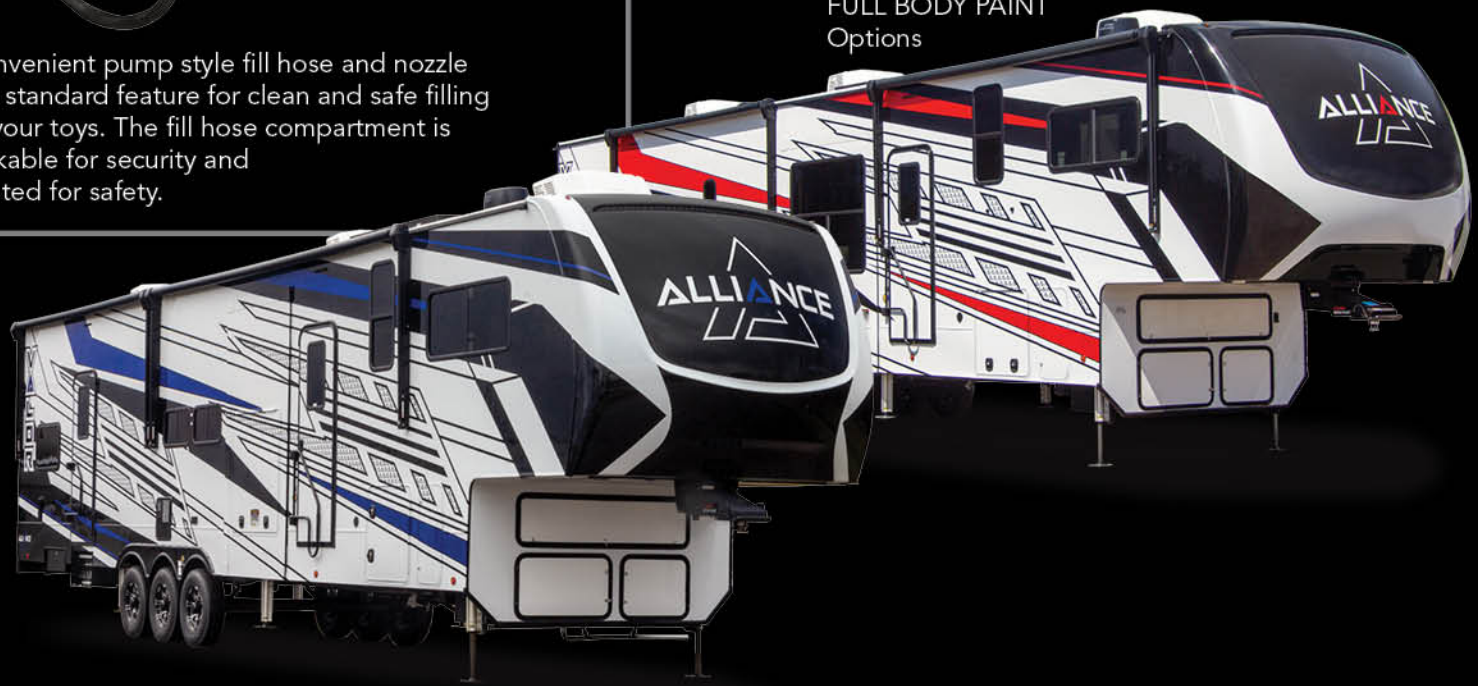
Tires and inflatables are topped off with ease using the built-in 12 Volt air compressor with hose connections on both exterior sides of the garage.



Dual 30 gallon fuel tanks on-board. One dedicated to the generator, the other for toys.

Convenient pump style fill hose and nozzle is a standard feature for clean and safe filling of your toys. The fill hose compartment is lockable for security and vented for safety.

FULL BODY PAINT  
Options





# -VALOR-



### Independence Package

- 3 A/C's, 40,000 BTU Furnace
- Built in Range with Glass cover
- Convection Microwave
- Fireplace with 5,100 BTU Space Heater
- Walk on Roof with Seamless PVC Roof Covering
- Flush Floor Kitchen Slide
- Large Residential Shower
- Commercial Grade Vinyl Flooring (No Carpet)
- Soft Close Cabinet Doors with Magnetic Catch
- Hidden Hinges
- Soft Close Toilet
- Light Dimming Switches
- Roller Shades Throughout
- HD TV in Living
- Residential LED Recessed Ceiling Lights
- LED Back-Lit Crown Molding in Living Area
- Hardwood Cabinet Doors & Drawers
- Black Cabinetry Hardware
- Centralized Docking Station
- No In-Floor Heat Vents (Main Floor)
- Mylar Reinforced Exterior Seals
- Sofa with Power Recliners
- King Mattress
- Painted Fiberglass Front Cap
- Solid Surface Kitchen Countertops
- Azdel Backed Fiberglass Sidewalls

### Garage Management System

- Weather Resistant Ramp Door
- Multipoint Tie Down System
- HappiJac Rollover Sofas with table
- Air Compressor
- Fully insulated Garage Floor
- Heat Source

### Masters of 12 Volt Package

- 17cf 12 Volt Refrigerator
- 12 Volt JBL Sound System
- USB Charging Stations Throughout
- 12 Volt Heat Pads for Tanks
- 12 Volt Power Recliners
- 12 Volt Bedroom and Garage TVs

### OTG - Off the Grid Pack

- 2- 320 Watt Solar Panels
- 40 Amp Charge Controller
- 100 Amp Hour Lithium Iron Phosphate Battery
- Battery Monitor System
- Generator Prep.

### Interior Options

- 3 Seasons Patio Door - Glass Doors (In Place of Pull Down Screen)
- Queen Bed Suite (In Place of King Bed Suite)

### Exterior Options

- Full Body Paint - Red or Blue
- Ramp Door Patio Package with Step
- Generator - Onan 5.5 kw Gas Generator
- Hydraulic Disc Brakes
- Dual Pane Windows
- Solar Package Plus
  - Additional 320 Solar Panel
  - 2 Additional 100 Amp Hour Lithium Iron Phosphate Batteries
  - Upgraded to 60 Amp Charge Controller
  - Energy Management
  - 3,000 Watt Inverter

### Performance Running Gear Package

- 4k Springs
- MorRyde HD Shackles & Wet Bolt Kit
- G-Range 4400 LB Rated Tires with 16" Aluminum Wheels
- 101" Wide-Body Benchmark Chassis Platform with Flush Floor Upper Deck
- MorRyde CRE3000 Suspension System
- 6-Point Hydraulic Auto Leveling
- 7000LB Dexter Axles
- Rota-Flex Pin Box
- Solid Step Quad Entry Steps
- Space Enhancing Drop Frame Storage Compartment

36V11	
LENGTH	39' - 8"
HEIGHT	13' - 4"
DRY WEIGHT	13,903
GVWR	16,950
HITCH WEIGHT	2,995
TANKS F G B	98 <sup>F</sup> 106 <sup>G</sup> 106 <sup>B</sup>



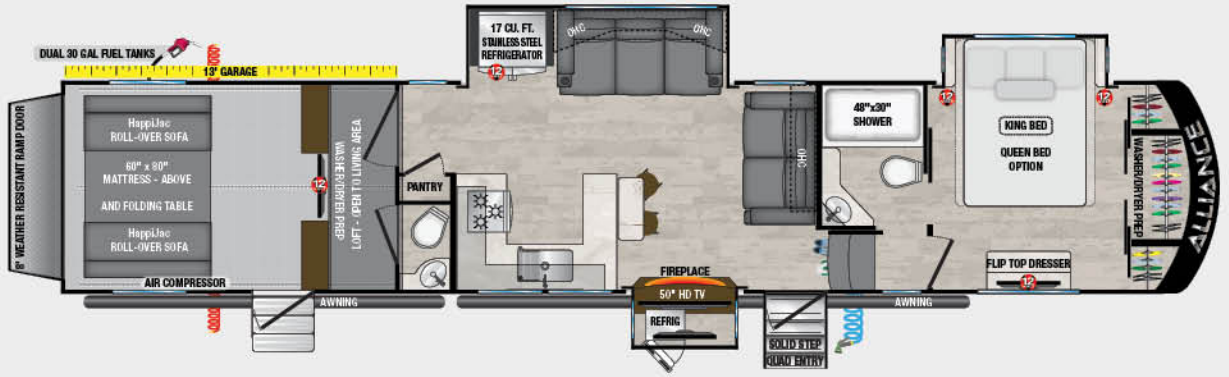
37V13	
LENGTH	39' - 11"
HEIGHT	13' - 4"
DRY WEIGHT	13,786
GVWR	16,950
HITCH WEIGHT	3,200
TANKS F G B	98 <sup>F</sup> 106 <sup>G</sup> 106 <sup>B</sup>





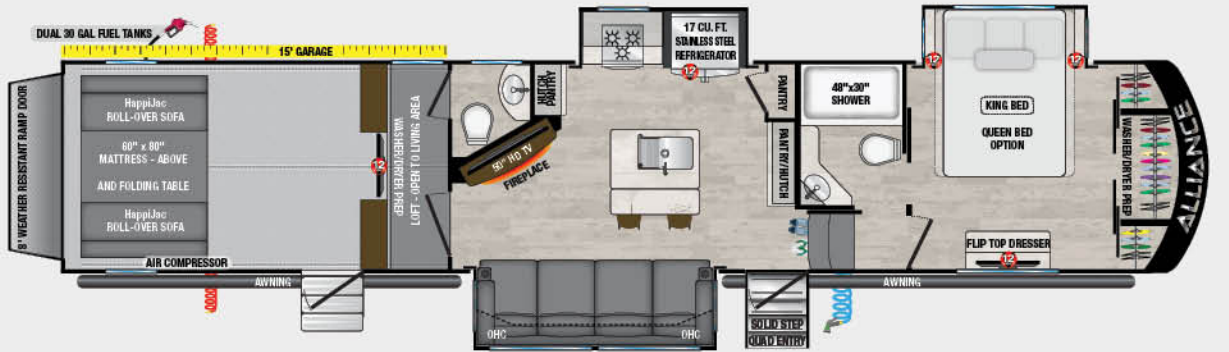
## 40V13

LENGTH	44' - 6"
HEIGHT	13' - 4"
DRY WEIGHT	14,988
GVWR	20,000
HITCH WEIGHT	3,000
TANKS F G B	98 <sup>F</sup> 106 <sup>G</sup> 106 <sup>B</sup>



## 41V15

LENGTH	43' - 7"
HEIGHT	13' - 4"
DRY WEIGHT	14,834
GVWR	20,000
HITCH WEIGHT	3,476
TANKS F G B	98 <sup>F</sup> 106 <sup>G</sup> 106 <sup>B</sup>



## 42V13

LENGTH	44' - 1"
HEIGHT	13' - 4"
DRY WEIGHT	15,600
GVWR	20,000
HITCH WEIGHT	3,005
TANKS F G B	98 <sup>F</sup> 106 <sup>G</sup> 106 <sup>B</sup>



## 43V13

LENGTH	44' - 1"
HEIGHT	13' - 4"
DRY WEIGHT	15,070
GVWR	20,000
HITCH WEIGHT	2,984
TANKS F G B	98 <sup>F</sup> 106 <sup>G</sup> 106 <sup>B</sup>

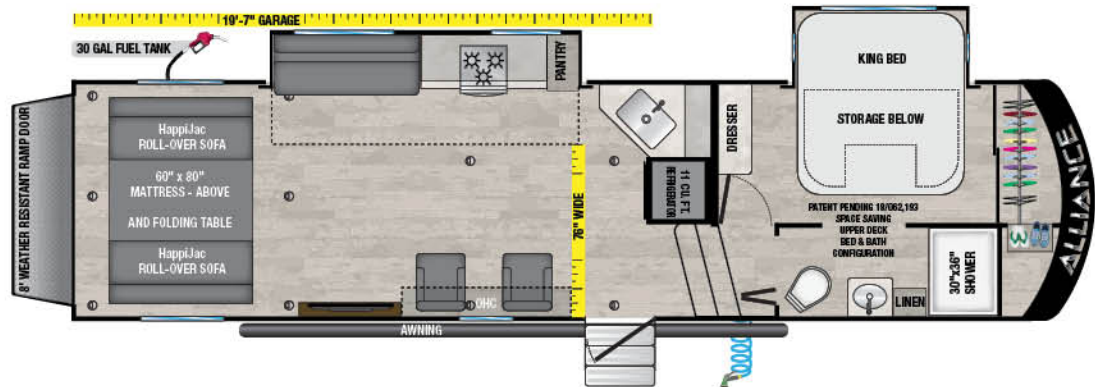




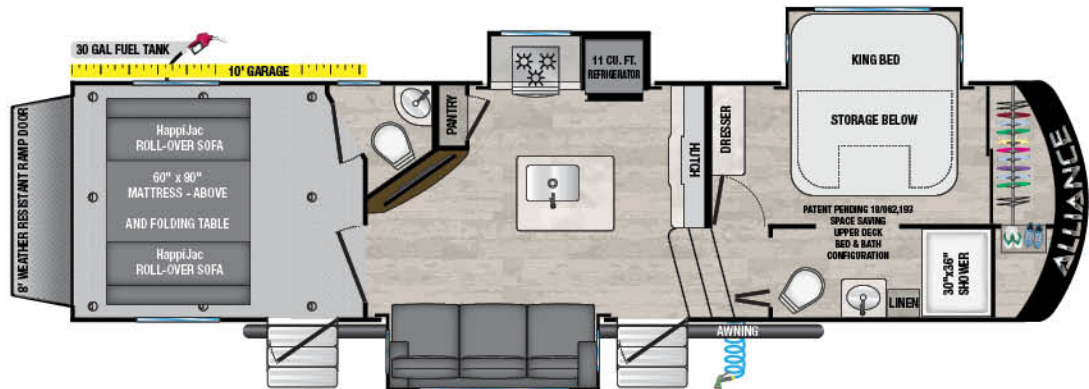
# ALL-ACCESS

Our All Access Series is an economical option, focused on essentials and value. It boasts three unique VALOR models all under forty foot featuring ten, fifteen and twenty foot garages with efficient living spaces.

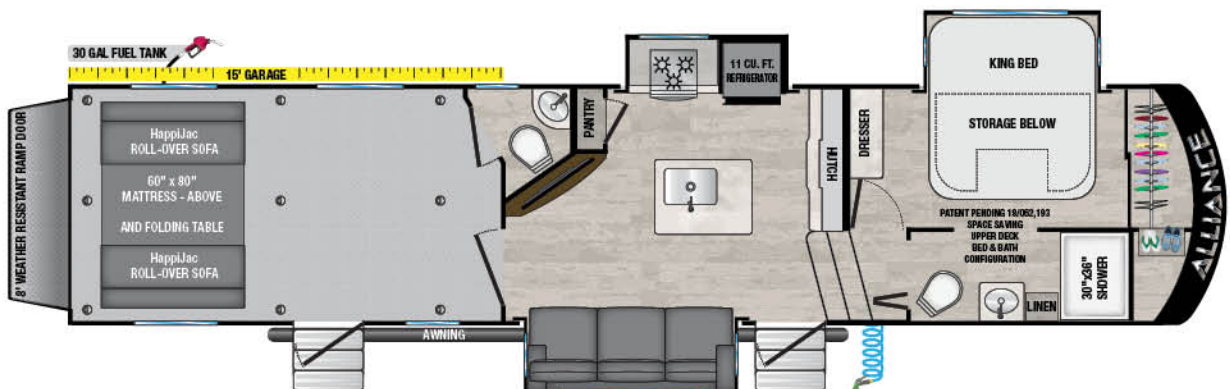
<b>30A20</b>	
LENGTH	34' - 11"
HEIGHT	13' - 4"
DRY WEIGHT	TBD
GVWR	16,800
HITCH WEIGHT	TBD
TANKS F G B	98 <sup>F</sup> 106 <sup>G</sup> 53 <sup>B</sup>



<b>31A10</b>	
LENGTH	34' - 8"
HEIGHT	13' - 4"
DRY WEIGHT	11,150
GVWR	16,800
HITCH WEIGHT	2,100
TANKS F G B	98 <sup>F</sup> 106 <sup>G</sup> 93 <sup>B</sup>



<b>36A15</b>	
LENGTH	39' - 8"
HEIGHT	13' - 4"
DRY WEIGHT	12,150
GVWR	16,800
HITCH WEIGHT	2,500
TANKS F G B	98 <sup>F</sup> 106 <sup>G</sup> 93 <sup>B</sup>





# S E R I E S

NEW



## Independence Package

- 13.5k A/C, 30,000 BTU Furnace
- Built-in Range w/ Glass Cover
- Microwave
- Walk-on Roof w/ Seamless PVC Roof Covering
- Keyed Alike Lock System
- Large Residential Shower
- Commercial Grade Vinyl Flooring (No Carpet)
- Soft Close Cabinet Doors w/ Magnetic Catch
- Hidden Hinges
- Light Dimming Switches
- HD TV in Living
- Residential LED Recessed Ceiling Lights
- LED Back-Lit Crown Molding in Living Area
- Hardwood Cabinet Doors & Drawers
- Black Cabinetry Hardware
- Centralized Docking Station
- No In-Floor Heat Vents
- Mylar Reinforced Exterior Seals
- Sofa w/ Power Recliners
- Queen Mattress
- Painted Fiberglass Front Cap
- 101" Wide-Body Benchmark Chassis
- Azdel-Backed Fiberglass Sidewalls

## Garage Management System

- Weather Resistant Ramp Door
- Multipoint Tie Down System
- 12 Volt HappiJac Rollover Sofas
- Fully Insulated Garage Floor
- Heat Source

## Masters of 12 Volt Package

- 11cf 12 Volt Refrigerator
- 12 Volt JBL Sound System
- USB Charging Stations Throughout
- 12 Volt Heat Pads for Tanks

## OTG - Off the Grid Pack

- 320 Watt Solar Panel
- 20 Amp Charge Controller
- Energy Management
- Generator Prep

## Interior Options

- 3 Seasons Patio Door - Glass Doors (In Place of Pull Down Screen)

## Exterior Options

- 2nd 13.5k A/C (Mandatory on All Fifth Wheels)
- Ramp Door Patio Package
- Generator - 5500 kw Gas Generator

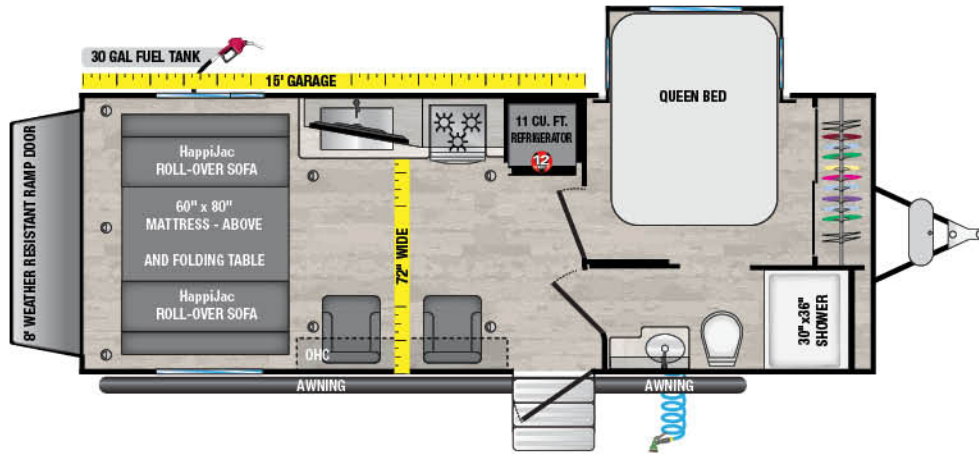
**-VALOR-**



# ALL ACCESS

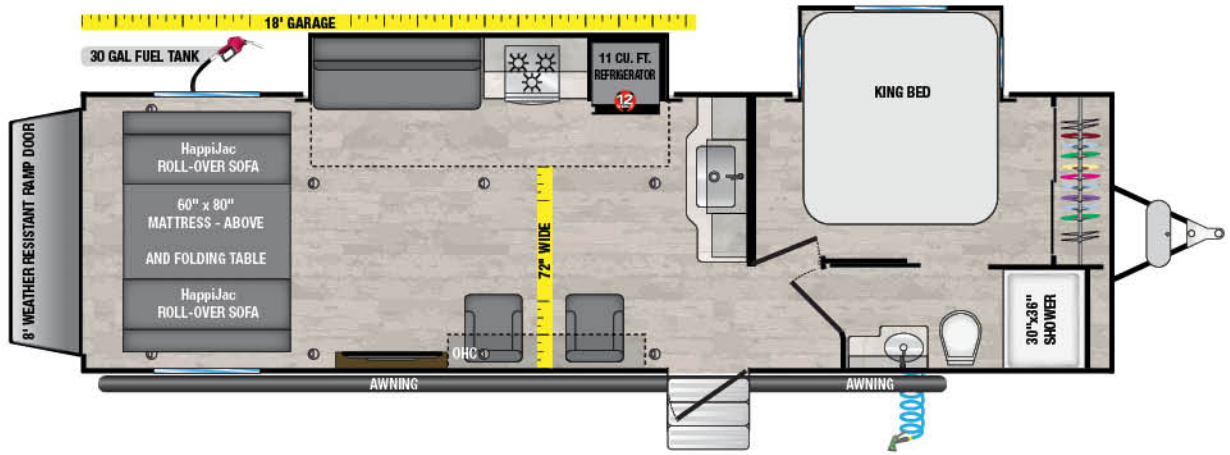
## 21T15

LENGTH	26'- 11"
HEIGHT	12'- 4"
DRY WEIGHT	6,987
GVWR	11,000
HITCH WEIGHT	906
TANKS F G B	98 <sup>F</sup> 40 <sup>G</sup> 40 <sup>B</sup>



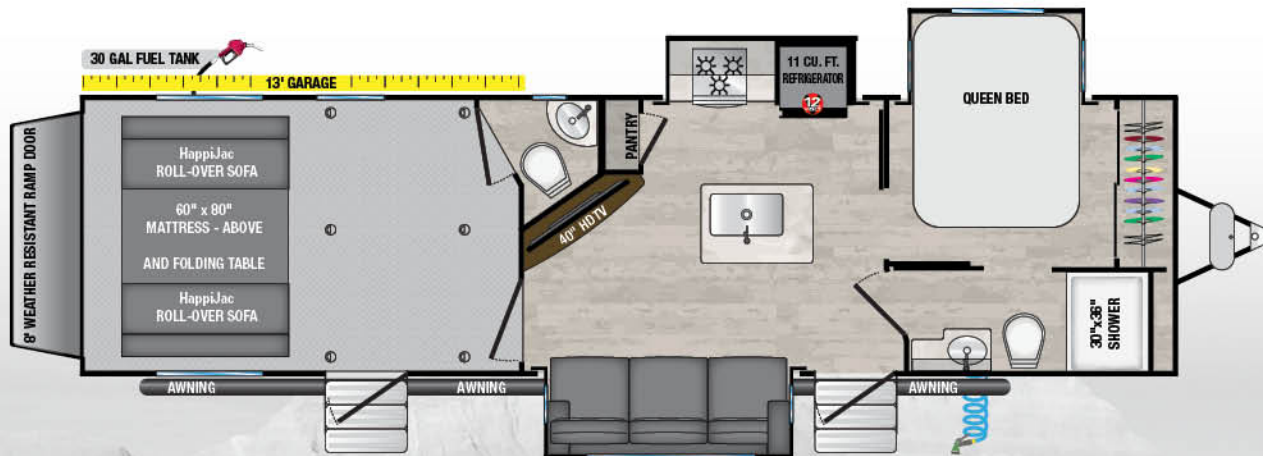
## 29T18

LENGTH	33'- 11"
HEIGHT	12'- 4"
DRY WEIGHT	8,235
GVWR	13,000
HITCH WEIGHT	1,201
TANKS F G B	98 <sup>F</sup> 40 <sup>G</sup> 40 <sup>B</sup>



## 31T13

LENGTH	35'- 11"
HEIGHT	12'- 4"
DRY WEIGHT	8,900
GVWR	13,000
HITCH WEIGHT	1,600
TANKS F G B	98 <sup>F</sup> 40 <sup>G</sup> 76 <sup>B</sup>





# SERIES

# TRAVEL TRAILERS



### Independence Package

- 13.5k A/C, 30,000 BTU Furnace
- Built-in Range w/ Glass Cover
- Microwave
- Walk-on Roof w/ Seamless PVC Roof Covering
- Keyed Alike Lock System
- Large Residential Shower
- Commercial Grade Vinyl Flooring (No Carpet)
- Soft Close Cabinet Doors w/ Magnetic Catch
- Hidden Hinges
- Light Dimming Switches
- HD TV in Living
- Residential LED Recessed Ceiling Lights
- LED Back-Lit Crown Molding in Living Area
- Hardwood Cabinet Doors & Drawers
- Black Cabinetry Hardware
- Centralized Docking Station
- No In-Floor Heat Vents
- Mylar Reinforced Exterior Seals
- Sofa w/ Power Recliners
- Queen Mattress
- Painted Fiberglass Front Cap
- 101" Wide-Body Benchmark Chassis
- Azdel-Backed Fiberglass Sidewalls

### Garage Management System

- Weather Resistant Ramp Door
- Multipoint Tie Down System
- 12 Volt HappiJac Rollover Sofas
- Fully Insulated Garage Floor
- Heat Source

### Masters of 12 Volt Package

- 11cf 12 Volt Refrigerator
- 12 Volt JBL Sound System
- USB Charging Stations Throughout
- 12 Volt Heat Pads for Tanks

### OTG - Off the Grid Pack

- 320 Watt Solar Panel
- 20 Amp Charge Controller
- Energy Management
- Generator Prep

### Interior Options

- 3 Seasons Patio Door - Glass Doors (In Place of Pull Down Screen)

### Exterior Options

- 2nd 13.5k A/C (Mandatory on 33T13)
- Ramp Door Patio Package
- Generator - 4000 kw Gas Generator







## OBSESSED WITH PROVIDING THE BEST RV OWNERSHIP EXPERIENCE!

Thank you for your interest in Alliance Recreational Vehicles. Our mission is simple - Provide our customers with the best RV ownership experience! This means creating long-term alliances with our family of product owners and dealer partners, and exceeding expectations every step of the way.

Our vision is to create a product driven by our customers, through their experience and input, and execute on those ideas at the highest level. Innovation and product development is best done in collaboration with the RVing community, and we are listening. Many of us here at Alliance RV have spent the majority of our careers in the RV industry, and we believe our RV owners and dealer partners will welcome an independent and truly different manufacturer that is transparent and dedicated to their customers.

Located on 110 acres in the heart of Elkhart, Indiana, Alliance RV now has over 500,000 square feet of manufacturing space spanning over 6 buildings. Production began in Fall 2019 with our first product line focused on the luxury fifth wheel market. As our progress continues and our designs unfold, we encourage you to join our Facebook group (Alliance RV Group). We are constantly (and obsessively) engaging our future customers to drive what we build at Alliance RV.

We are honored you have taken the time to learn more about Alliance RV and look forward to your feedback and support as we execute our vision. If you are as obsessed with building a better RV ownership experience as we are, this is only the beginning of a very rewarding long-term 'Alliance'.

Sincerely,

*Coley &*

*Ryan Brady*

Co-Founders



Product information is as accurate as possible as of the date of publication of this brochure. Alliance RV is committed to continuous product improvement thus - floorplans, materials, components, features, measurements, specifications, options, etc. are subject to change at any time without notice or obligation. Certain conditions may require additional equipment. Advertising and marketing photography may show optional equipment or props used for photography purposes only.

Alliance publishes approximate base weight of the trailer without optional equipment included. Optional equipment will impact the weight of the trailer. Please locate the weight sticker attached to the trailer you are considering for the most accurate trailer weight.

Tow Vehicle Caution: Retail owners of Alliance recreational vehicles are solely responsible for the selection and proper use of tow vehicles. All customers should consult with a motor vehicle manufacturer or their dealer concerning the purchase and use of suitable tow vehicles for Alliance products. Alliance disclaims any liability or damages suffered as a result of the selection, operation, use or misuse of a tow vehicle. Alliance's limited warranty does not cover damage to the recreational vehicle or the tow vehicle as a result of the selection of the tow vehicle.

VALOR Brochure 16pg Rev Sep 2022 • 50,000 Lithotone 12/07/22

[www.alliancerv.com](http://www.alliancerv.com)



Alliance Recreational Vehicles  
301 Benchmark Drive  
Elkhart, Indiana 46516  
Office: (574) 218-7165  
Sales: (574) 281-9869  
Service: (574) 226-0140

Your Authorized Alliance Dealer: