

# ROCKWOOD

## ULTRA LITES

\*\*\*  
ROCKWOOD  
PROVIDING OUTDOOR FUN SINCE  
1974



ROCKWOOD ULTRA LITES



ULTRA V  
TRAVEL TRAILERS  
FIFTH WHEELS

## THE TRADITIONAL ROCKWOOD ULTRA LITE V LITES, TRAVEL TRAILERS AND FIFTH WHEELS CONTINUE TO PROVIDE UNSURPASSED VALUE AND COMFORT.

The spacious interiors offer numerous windows, 80" vaulted ceilings with directional vented air conditioning and extensive interior LED lighting throughout. Rich with appointments like the solid surface kitchen counter-tops with a flush mount sink, a stove top with glass cover, 22" oven and distinctive Maple or Driftwood cabinets with solid wood doors and drawer fronts throughout add to the tremendous value provided.



Optional Oyster Exterior

Featuring an aluminum framed with vacuum bonded construction, high gloss fiberglass exterior and deluxe graphics, the Ultra Lites and Ultra Vs are among the best constructed, most well insulated trailers available on the market today.



Optional Oyster Exterior

Rockwood travel trailer models are loaded with features like polished alloy wheels and Nitro filled tires radial tires mounted to Dexter Torflex torsion axles for a smooth, safe ride. Also an enclosed underbelly to keep the underside of your trailer clean and protected from many of the road hazards along the way. Rockwood also made standard the frameless bonded windows and an automotive front windshield when applicable to give you the great look you would expect from Rockwood.





2440WS

INTERIOR COLORS: STERLING / MAPLE



## AN UPGRADE FROM YOUR STANDARD TRAILER.

To continue this tradition, Rockwood offers a group of appealing features to enhance your camping experience. Features like our 13,500 BTU ducted roof AC, a power awning with LED strip lighting and an adjustable rain dump, a quick recovery auto ignition gas / electric water heater, a built in microwave and a outside BBQ grill make camping comfortable and easy. With all these features, and plenty more, Rockwood still remains a light-weight, 1/2 ton towable camper.

ROCKWOOD

# ULTRA V

**Aerodynamic profiles make all the difference.** "V" nose design to utilize every possible space for interior room and storage. While the aerodynamic, aluminum framed and vacuum-bonded exterior can be towed by a wide variety of vehicles on the market, the available standards and options provide extensive potential customization for each individual consumer.

2618 VS

INTERIOR COLORS: JASPER / MAPLE



Standard White Exterior





	<b>2618VS</b>	<b>2715VS</b>	<b>2811VS</b>
Unloaded Vehicle Weight *	6392	6964	6537
Base Dry Hitch Weight	718	1010	898
Base Dry Axle Weight	5615	5895	5580
Cargo Capacity	1326	1446	1461
Length (Hitch To Bumper)	29' 9"	31' 10"	31' 9"
Width	96"	96"	96"
Height With A/C	133"	133"	133"
Interior Height	80"	80"	80"
Fresh Water Capacity	43 gal	43 gal	43 gal
Gray Water Capacity	74 gal	74 gal	74 gal
Black Water Capacity	37 gal	37 gal	37 gal

A photograph of the interior of a motorhome bedroom. A large bed with a dark headboard is on the right, covered with a light-colored sheet and a blue and white plaid blanket. A wooden dresser with drawers is on the left. A window with a view of a mountain landscape is in the center. A wooden tray with a glass of orange juice and a book is on the bed. The ceiling has recessed lights, and there are wooden cabinets above the bed.

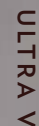
[illegible]

2715VS

The floor plan for the 27' Awning model shows a layout with the following features:

- Exterior:** Includes an "EXTERIOR STORAGE" area, a "GAS GRILL", and an "ENTRY" leading into the main space.
- Living Area:** Features a "DINETTE" with two chairs, a "TV" mounted on the wall, and a "SOFACENTER" with a "SWITCH" and "POWER" outlet.
- Kitchen:** Contains a "SINK", "MICRO" (microwave), and "REF" (refrigerator).
- Bathroom:** Includes a "TOILET", "SINK", and "SHOWER".
- Bedroom:** Features a "BED" measuring 60 X 80, a "DRESSER", and a "WARDROBE".
- Storage:** Includes a "CLOSET" and an "OPTIONAL REFRIG" (refrigerator) area.
- Other:** A "TV" is also shown in the living area, and a "SINK" is located near the entrance.

## SUPER SLIDE OPTIONS



ULTRA LITE

# TRAVEL TRAILERS

**You'll love what you find in our floor plans.** Our trailers are packed full of quality features in order to bring to you one of the best values in the light weight market. There are spacious flush floor slides, comfortable stylish sofas and wide dinettes with easily adjustable legs. We only use our best inside the "Ultra Lite" series.



Standard White Exterior

Optional Oyster Exterior

2604 WS

INTERIOR COLORS: WINSTON / DRIFTWOOD





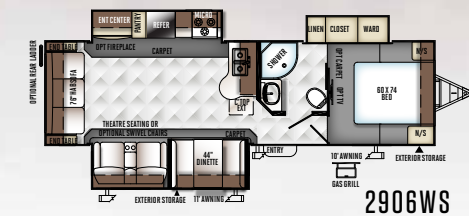
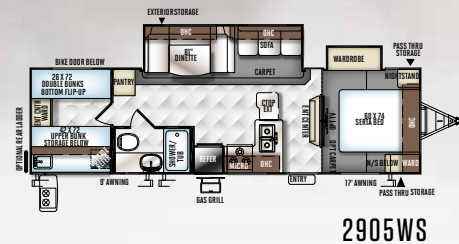
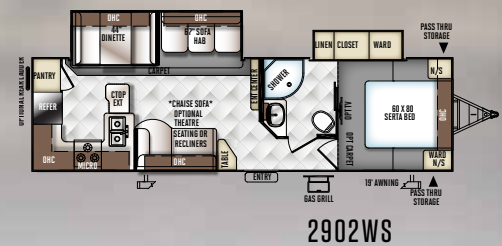
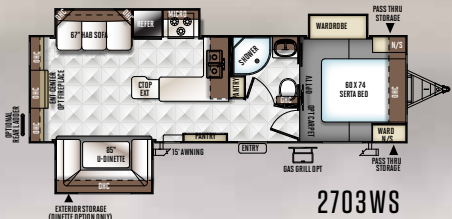
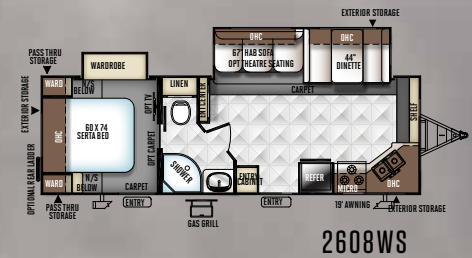
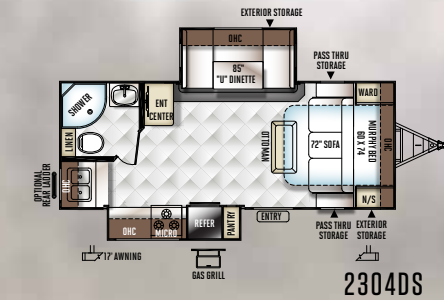
## SPECIFICATIONS & FLOORPLANS

[illegible]

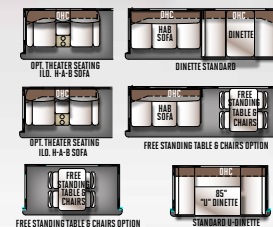
\* See back cover for further specification definitions.



## 2604WS BEDROOM



## SUPER SLIDE OPTIONS



2440WS

INTERIOR COLORS: STERLING / MAPLE





## ULTRA LITE

# FIFTH WHEELS

**So you didn't think you could pull a fifth wheel?** The Rockwood Ultra Lite Fifth Wheel models provide light weight alternatives with a variety of floor plans, features and options for owners of 1/2 ton pick up trucks. Equipped with a standard Reese Revolution Hitch, you can tow with almost any size truck bed. Take a close look and you will see that our Ultra Lite fifth wheels have been custom designed with the best in styling and amenities while keeping your towing needs in mind.



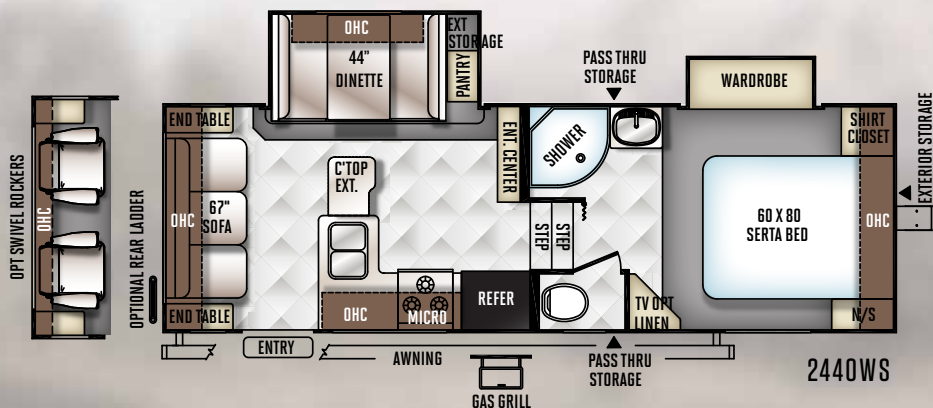
Optional Oyster Exterior

### SPECIFICATIONS & FLOORPLANS

	2440WS	2650WS	2720WS
Unloaded Vehicle Weight *	6741	7409	7706
Base Dry Hitch Weight	1134	1240	1176
Base Dry Axle Weight	5548	6110	6470
CCC	1393	1431	1270
Length (Hitch To Bumper)	27'	29' 8"	30' 1"
Width	96"	96"	96"
Height W A/C	151"	151"	151"
Fresh Water Capacity	43 gal	43 gal	43 gal
Gray Water Capacity	37 gal	37 gal	74 gal
Black Water Capacity	37 gal	37 gal	37 gal

The Unloaded Vehicle Weight (UVW) listed represents the weight of one trailer with that model's standard equipment including the content of specified Option Packages. \* See back cover for further specification definitions.

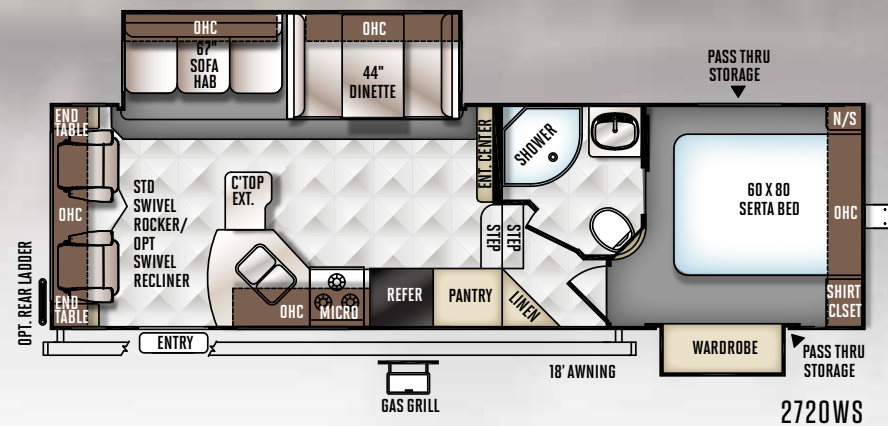
### SUPER SLIDE OPTIONS



2440WS



2650WS



2720WS

ROCKWOOD ULTRA LITE

# POPULAR FEATURES

**Just a few features that make us great.** Rockwood takes careful consideration to each feature added into each product produced. Every detail is considered ranging from extra sleeping room, storage, comfort and convenience. Take time to review the features listed below and match them with the competition's products. We're confident you'll discover Rockwood is the superior choice.



Optional Oyster Exterior



- A** Power Awning with Adjustable Rain Dump and LED Lighting (UL/UV: Std/Opt)
- B** 32" LCD TV and entertainment center with "Bluetooth" Technology.
- C** Radius Glass Door Shower (N/A Models with Tub Bases)
- D** Solid surface counter top with under mount sink
- E** Water Filtration System (Std. Opt.)
- F** Outside Shower (Std.)
- G** Deluxe Tri-Fold Sleeper Sofa w/ Comfortable, easy set-up Queen bed (Std. models w/ 67" HAB Sofa) (Full Size Bed, Std. models with King-U-Dinette option)





**A** Rear camera prep. (Std. all models) The Furrion observation camera system with digital wireless technology is sold separately.

**B** Forest River Switch Center (Std.)

**C** Day night shades (Opt.)

**D** The Reese Revolution pin box provides:  
1) Full 90 degree worry free turning,  
2) Eliminates the need for a slider,  
3) Greatly enhances maneuverability  
[www.reeseprod.com](http://www.reeseprod.com) (Std.)

**E** Heated holding tanks with 12 Volt heat pads secured to the bottom No need to use the furnace to heat tanks when traveling. (Std.)

**F** Solar panel prep (Std. All Models) The Zamp 40 amp. portable solar panel shown is sold separately.

**G** 60" Heated theatre Seating. Fabric matched to decor.

**H** Swivel rocker, fabric to match" (Std. 2604WS, 2720WS, 2718VRLS) (Opt. 2811VS, 2440WS)

**I** Standard swivel recliner where applicable. Fabric to match decor. Available ILO all units with swivel swivel rockers.

**J** 67" Heated theatre seating per plan where available. Fabric matched to decor. (Std. 2906WS) (Opt. ILO Sofa 2618VS, 2715VS, 2604WS, 2608WS, 2702WS, 2905WS, 2650WS, 2720WS)

SOFA & CHAIR LEATHER APPEARANCE, DINETTE CUSHIONS, VALANCE ARMS & ACCESSORIES



**JASPER**

CURTAINS

CLOTH SOFA



**STERLING**

CURTAINS

SOFA & CHAIR LEATHER APPEARANCE, DINETTE CUSHIONS, VALANCE ARMS & ACCESSORIES



**WINSTON**

CURTAINS



DRIFTWOOD DÉCOR  
STANDARD



MAPLE DÉCOR  
OPTION



STANDARD  
FLOOR COVERING



OPTIONAL  
FLOOR COVERING



CARPET

POPULAR FEATURES

ROCKWOOD SUPER ULTRA LITE

# QUALITY CONSTRUCTION

**Just a few features that make us great.** Quality built trailers always bring the same results: long-lasting products you can depend on to enjoy with your family year after year. These are some of our highlights.



G



A Glued and screwed wood cabinetry

B Aluminum dinette frames for added strength and weight savings

C Nitrogen filled tires for less air pressure fluctuation and a safer ride

D Extra large dinette storage drawers and full extension metal drawer guides in the kitchen

E Dexter Torflex Axles:  
• Independent wheel suspension and self-damping action  
• Rubber cushioning eliminates metal-to-metal contact.  
• Forged torsion arm for maximum strength

Models are also equipped with E-Z Lube® System and Nev-R-Adjust® Brakes.

F Enclosed underbelly protects trailer components as well as increasing aerodynamics

G Aluminum Frame Construction with high gloss fiberglass exterior and deluxe graphics



## ROOF CONSTRUCTION



Vacuum-bonded radius roof with vaulted ceiling providing superior insulation and more interior height.



4" thick roof with built in insulated A/C ducts



Built strong to enable you to conveniently perform periodic roof maintenance.

## WALL STRENGTH



Structurally engineered materials makes our vacuum-bonded walls some of the strongest in the industry.

## VACUUM-BONDED LAMINATED CONSTRUCTION



Rockwood is one of only a few manufacturers with six sided aluminum framing. Vacuum bonded walls and roof to ensure a well-insulated, light weight, strong structural trailer.

# STANDARDS & OPTIONS

## ROCKWOOD ULTRA V, ULTRA LITE TRAVEL TRAILERS & FIFTH WHEELS

MODELS	V	TT	FW	MODELS	V	TT	FW	MODELS	V	TT	FW
<b>STANDARD PACKAGES INCLUDE:</b>	<b>PKG. F</b>	<b>PKG. F</b>	<b>PKG. E</b>								
High Gloss TPO Front Cap	S	S	S	Serta Innerspring Mattress	S	S	S	Fireplace (2703WS, 2906WS, 2650WS Only)	--	0	0
Reese Revolution Pin Box Hitch (Pkg. E Only)	--	--	S	Quick Recovery Auto Ignition Gas/Electric Water Heater	S	S	S	Carbon Monoxide Detector	S	S	S
Aluminum Bed and Dinette Base	S	S	S	Black Tank Flush	S	S	S	12 Volt Power Plug Hook-up	S	S	S
6 Sided Aluminum Cage Construction	S	S	S	Spare Tire Carrier and Cover	S	S	S	CSA	0	0	0
Vacuum Laminated 1 Piece Roof and Walls	S	S	S	Outside Grill	S	S	S	Monitor Panel Switch Station	S	S	S
Enclosed Underbelly	S	S	S	Tinted Bonded Frameless Windows	S	S	S	55 Amp Converter With Charger	S	S	S
4 Frame Mounted Stabilizer Jacks (Pkg. F Only)	S	S	--	Automotive Windshield (Pkg. F Only Where Applicable)	S*	S*	--	Battery Disconnect Switch	S	S	S
Power Landing Legs and Stabilizer Jacks (Pkg. E Only)	--	--	S	Rear Observation Camera Prep w/ Molded Mounting Plate	S	S	S	Recessed Ceiling LED 12 Volt Interior Lighting	S	S	S
Power Awning w/ Adjustable Rain Dump and LED Light Strip	S	S	S	Solar Panel Prep	S	S	S	Bedroom Mounted 24" LCD TV (Opt. All UL Models Except 2304DS)	0*	0*	0*
Torsion Axle, Rubber-Ryde Suspension	S	S	S	<b>INTERIOR FEATURES</b>				32" LCD TV w/ Premium Soundbar	S	S	S
Nitro Filled Radial Tires	S	S	S	Driftwood Interior	S	S	S	Digital AM/FM/CD/DVD w/ Remote	S	S	S
Polished Alloy Wheels	S	S	S	Maple (w/ Solid Maple Glaze Finished Cabinet Doors) Interior	0	0	0	MP3 Player Hook-Up	S	S	S
LED TV w/ Multi-directional Antenna	S	S	S	Decorative Slide Out Fascia	S	S	S	Designer Valances w/ Lambrequin Arms	S	S	S
Multi Zone Stereo w/ DVD/CD/AM/FM and Bluetooth Control	S	S	S	Solid Wood and Raised Panel Doors and Drawers	S	S	S	Night Shades	S	S	S
Slam Latch Baggage Doors	S	S	S	Screwed and Glued Wood Cabinetry	S	S	S	Day/Night Shades	0	0	0
Magnetic Door Holds	S	S	S	Residential Full Extension Metal Drawer Guides	S	S	S	Swivel Rocker Chair (Std. 2604WS, 2715VS, 2720WS Only, Opt. 2811VS, 2440WS ILO Rear Sofa)	S*/0*	S*	S*/0*
Outside Speakers	S	S	S	Engineered Mold and Mildew Resistant Floor Covering	S	S	S	Swivel Rocker Recliners ILO Swivel Rockers (Opt. 2715VS, 2720WS Only)	0*	--	0*
Maxxair® Ventilation Fan and Vent Cover	S	S	S	Bedroom Carpet (N/A 2304DS)	0	0	S	Swivel Rocker Recliners ILO Chaise Lounge (Opt. 2902WS Only)	--	0*	--
13,500 BTU Ducted Roof A/C	S	S	S	Floor Ducted Furnace	S	S	S	Heated Theater Seating w/ USB Ports ( Std. 2906WS, Opt. 2618VS, 2606WS, 2715VS, 2604WS, 2608WS, 2702WS, 2905WS, 2720WS)	0*	S*/0*	0*
Under Mount Double Bowl Kitchen Sink w/ Residential Style Faucet	S	S	S	15,000 BTU A/C	0	0	0	Heated Theater Seating w/ USB Ports ILO Chaise Lounge			
Solid Surface Kitchen Countertops	S	S	S	2nd Roof A/C w/ Chill Chaser Heat Strip and 50 Amp Service (N/A 2304DS, 2604WS, 2608WS, 2606WS) and Digital Dual Thermostat Control	0	0*	0				
Recessed 3 Burner Cooktop and Large Oven w/ Flush Mount Cover	S	S	S	50 Amp Service w/ 2nd A/C Prep (N/A 2304DS, 2604WS, 2608WS, 2606WS)	0	0*	0				
Roller Bearing Drawer Guides	S	S	S								
Microwave Oven	S	S	S								
Double Door Auto Gas/Elec. Large Refrigerator	S	S	S								





MODELS	V	TT	FW
(Opt. 2902WS Only)	--	0*	--
Deluxe Tri-Fold Sleeper Sofa (Std. 2618VS, 2715VS, 2604WS, 2606WS, 2608WS, 2702WS, 2706WS, 2703WS, 2902WS, 2905WS, 2906WS, 2650WS, 2720WS)	S*	S*	S*
44" Family Dinette (N/A 2304DS, 2706WS 2703WS, 2905WS)	S*	S*	S*
48" X 84" Spacious King-U-Style Dinette (Std. 2304DS, 2706WS, 2703WS, 2905WS)	S*	S*	S*
Free Standing High Pressure Laminated Table with Swing Level Legs	S	S	S
Free Standing Table and Chairs (N/A 2618VS)	0*	0*	0*
Stainless Steel Appliances	0	0	0
Raised Refrigerator Panels	0	0	0
Residential One-Piece Sink Cover	S	S	S
Cutting Board	S	S	S
Counter Top Extension (Std. 2906WS, 2715VS, 2604WS, 2606WS, 2702WS, 2706WS, 2703WS, 2905WS, 2440WS, 2720WS)	S	S	S
Water-Pur Filtration System	S	S	S
Tub Surround	S	S	S
Radius Glass Door Shower	S*	S*	S*
Large Shower w/ Sliding Glass Door (Std. 2606WS, 2706WS)	--	S*	--
Bathroom Skylight	S	S	S
Water Heater By-Pass Kit	S	S	S
Foot Flush Toilets	S	S	S
Extra Maxxair® Ventilation Fan and Vent Cover	0	0	0
Murphy Bed w/ Under Sofa Storage System and Outside Access for Unmatched Floor Plan Flexibility (Std. 2304DS)	--	S*	--

MODELS	V	TT	FW
<b>EXTERIOR FEATURES</b>			
Fully Aluminum Frame (Floor, Sidewall, & Roof)	S	S	S
Insulation Factors R-7 Side Wall, R-12 Floor and R-14 Ceiling	S	S	S
Radius Roofs w/ Interior Vaulted Ceilings	S	S	S
Vinyl / Rubber Composite Roofing Membrane	S	S	S
T V Antenna w/ Cable & Satellite Hook-Up	S	S	S
Rear Observation Camera Prep w/ Molded Mounting Plate	S	S	S
Laminated Oyster Colored Fiberglass Sidewalls	0	0	0
Laminated Fiberglass Sidewalls	S	S	S
Distinctive Black Exterior Trim	S	S	S
Electric Slide-Out (All Slide Out Models)	S	S	S
Decorative Frame Skirting	S	S	S
Rear Ladder	0	0	0
Bike Rack Ladder Attachment	0	0	0
Awning Slide Topper	0	0	0
30" Primary Entrance/Screen Door	S	S	S
Friction Hinge Entrance Door	S	S	S
Large Assist Grab Handles	S	S	S
Lighted Entry Step and Scare Light	S	S	S
Radius Corner Windows and Doors	S	S	S
Thermopane Windows	0	0	0
Large Dinette Picture Window	S	S	S
Outside Shower	S	S	S
1/2 Sliding Storage Tray (N/A 2304DS, 2604WS)	--	0*	--
Outside Antifreeze Stations	S	S	S

MODELS	V	TT	FW
Front Outside "Trunk" Storage Separated From Heated			
Pass Thru Storage Compartments	--	--	S
Two-30 Lb Gas Bottles	S	S	S
Enclosed Gas Bottles w/ Storage Door Access	S	--	S
Molded Bottle Cover	--	S	--
Surface Coated Steel I-Beam Frame	S	S	S
Reese Revolution Hitch	--	--	S
Power Front Landing Jacks	--	--	S
Power Tongue Jack	0	0	--
Power Stabilizer Jacks (Fifth Wheels: Rear Jacks only)	0	0	0
Easy Lube Axles and Nev-R Adjust Brakes	S	S	S
Triple Entry Step	S	S	S
Electronically Controlled Heated Holding Tanks	0	0	0

V = ULTRA V, TT = ULTRA LITE TRAVEL TRAILER, FW = ULTRA LITE FIFTH WHEEL

S = STANDARD, 0 = OPTIONAL, -- NOT AVAILABLE, \* = SELECTED MODELS



### PRE-DELIVERY INSPECTION FACILITY

20,000 square feet of quality assurance. The bare essentials for a premium product. This state-of-the-art facility gives immediate daily feedback to production for quality assurance in every unit built.



Forest River, Inc. encourages our customers to purchase their Forest River products from a local dealership whenever possible for the following reasons:

- 1) Forest River, Inc. dealers are independently owned and operated businesses so priority service and scheduling is at their discretion and is often provided to customers that purchased their unit at that dealership.
- 2) Purchasing locally allows customers to establish meaningful relationships with a dealer, enhancing the RV experience through assistance with product questions, user tips or RV regulations for your state or country, and much more!
- 3) Canadian customers must meet requirements to bring an RV purchased out of the country to their home. These requirements may involve additional inspections and certifications, taxes and fees. Your local Canadian Dealer is a professional at meeting these requirements.
- 4) Scheduling timely warranty repairs and adjustments through a local dealership provides far greater flexibility and convenience to you, the customer!

It is the goal of Forest River, Inc. that all of our RV owners fully enjoy the RV experience and that customer satisfaction meets or exceeds their expectations!

### 24/7 EMERGENCY ROADSIDE ASSISTANCE

For a worry-free ownership experience

Forest River includes one

year of Coach-Net RV Technical & Roadside

Assistance with each RV purchase. Whether

new to the RV lifestyle or an experienced RV enthusiast,

Forest River owners have 24/7 access to technical,

operational and emergency road service

coverage throughout the US & Canada.

Coach-Net's fast, dependable

service is just a phone

call away.

## Coach-Net®

RV Technical & Roadside Assistance

LOOK FOR OUR  
OTHER POPULAR  
LINES OF ROCKWOOD  
CAMPING TRAILERS.



Rockwood Signature Ultra Lite TT, Fifth Wheel and Windjammer



Rockwood Mini Lite and Roo



Rockwood Freedom, ESP, Premier, High Wall, Hard Side Campers

### Specification Definitions

**GVWR (Gross Vehicle Weight Rating)** - is the maximum permissible weight of the unit when fully loaded. It includes all weights, inclusive of all fluids, cargo, optional equipment and accessories. For safety and product performance do NOT exceed the GVWR.

**GAWR (Gross Axle Weight Rating)** - is the maximum permissible weight, including cargo, fluids, optional equipment and accessories that can be safely supported by a combination of all axles.

**UVW (Unloaded Vehicle Weight)\*** - is the typical weight of the unit as manufactured at the factory. It includes all weight at the unit's axle(s) and tongue or pin and LP Gas. The UVW does not include cargo, fresh potable water, additional optional equipment or dealer installed accessories.

\*Estimated average based on standard build optional equipment.

**CCC (Cargo Carrying Capacity)\*\*** - is the amount of weight available for fresh potable water, cargo, additional optional equipment and accessories. CCC is equal to GVWR minus UVW. Available CCC should accommodate fresh potable water (8.3 lbs per gallon). Before filling the fresh water tank, empty the black and gray tanks to provide for more cargo capacity.

\*\* Estimated average based on standard build optional equipment

Each Forest River RV is weighed at the manufacturing facility prior to shipping. A label identifying the unloaded vehicle weight of the actual unit and the cargo carrying capacity is applied to every Forest River RV prior to leaving our facilities.

The load capacity of your unit is designated by weight, not by volume, so you cannot necessarily use all available space when loading your unit.

### ROCKWOOD

# WARRANTY

For details on Rockwood's complete warranty program, see your Rockwood dealer. When it comes to backing products with the same quality and commitment it does when it begins the manufacturing process, the only name you have to remember when you're looking for a recreational vehicle is Rockwood. Rockwood offers the following additional limited warranties to the original purchasers. Consult written warranty for details.

1. Twelve-year vinyl roof warranty,
2. Two-year fiberglass warranty,
3. Ten-year Torflex® axle warranty,
4. One-year bumper to bumper warranty,
5. Available second-year warranty



#### Learn More

Scan this barcode using a QR Reader on your smart phone to learn more about Forest River.



A Berkshire Hathaway company.



201 WEST ELM MILLERSBURG, IN 46543 WWW.FORESTRIVERINC.COM/ROCKWOOD 574.642.2640

YOUR ROCKWOOD DEALER

All information contained in this brochure is believed to be accurate at the time of publication. However, during the model year, it may be necessary to make revisions and Forest River, Inc., reserves the right to make all such changes without notice, including prices, colors, materials, equipment and specifications as well as the addition of new models and the discontinuance of models shown in this brochure. Therefore, please consult with your Forest River dealer and confirm the existence of any materials, design or specifications that are material to your purchase decision. Litho. U.S.A. FOR 1386 W: 2016.10.12