

Hideout

EASTERN

SINGLE-AXLE MINIS
TRAVEL TRAILERS
FIFTH WHEELS
TOY HAULERS

GO OUTSIDE AND

GET LOST



**Keystone RV
Company**

The ultimate ownership experience.

The goal of Keystone RV Company is to surprise and delight our owners at each and every touchpoint. We're happy when our campers are happy, and we are committed to providing the very best ownership experience in the industry.



1 EASIER SHOPPING.

At Keystone, we make choosing an RV as easy as finding the Big Dipper on a dark summer night. With comprehensive online product information, Key Connect™ product advisors, and an unparalleled dealer network, we will help you select the perfect RV for your family's adventure.

2 INNOVATIVE THINKING.

The road's a nicer place when you have the industry's smartest features behind you. Keystone leads the pack in patented innovations that make our RVs safer, more comfortable, and easier to operate.

3 LONG HAUL QUALITY.

To keep you on the road, there are certain things we just won't build a Keystone RV without. Game-changing features like our Unified Wiring Standard, Tru-Fit™ five-point slide construction, and no-fail Tuf-Lok™ A/C duct joiners combined with exhaustive testing and inspections are some of the reasons why Keystone is able to offer our owners the industry's best 3-year limited structural warranty.

4 WORRY-FREE CUSTOMER SERVICE.

Wherever the road takes you, you're never too far from an authorized Keystone service center. We also offer live service assistance, ultra-fast parts shipping, online maintenance tips and tricks, and a single-point warranty claims policy. *That's* peace of mind.

5 KEYSTONE NATION.

When you choose Keystone, you become a part of one of the largest camping families in the country. We're Keystone Nation. A friendly community where people share photos, travel tips and amazing stories – all in the spirit of camaraderie and adventure. Come join us.

Experience the hideout lifestyle by visiting [#keystonehideout](#)



Keystone EXCLUSIVE Innovations

Year after year, Keystone RV's experienced team delivers Built For the Long Haul quality you expect and exclusive innovations you won't find anywhere else.



3-year Limited Structural Warranty, 1-year Limited Base Warranty

Every new Keystone RV comes with the industry's best three-year limited structural warranty AND a one-year limited base warranty. Ask your dealer, visit keystonerv.com, or call Keystone owner relations for details.



4G LTE and Wi-Fi Prep

All units are equipped with a new Furrion® antenna that integrates 4G LTE and Wi-Fi with standard VHF/UHF/AM/FM reception.



EXCLUSIVE Color-Coded Wiring

Easy-to-trace circuits simplify electrical and entertainment system troubleshooting.



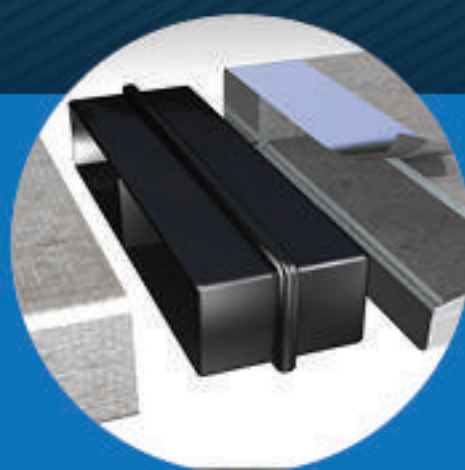
Hitch Vision™

Simplifies hitch hook-up with "no looking back" convenience. (Fifth wheel models only.)



In-Floor Heating Ducts

Ducting allows for more airflow that distributes heat evenly for optimal comfort.



Tuf-Lok™ A/C Duct Joiners

Crush resistant design securely joins A/C ductwork, drastically reducing chilled-air leaks and boosting cooling efficiency and comfort.



Tru-fit™ Slide Construction

A more durable slide room design that minimizes functional motor and structural stress, resists leaking.

HIDEOUT



SINGLE-AXLES | LHS TRAVEL TRAILERS | LUXURY TRAVEL TRAILERS | LUXURY FIFTH WHEELS

Ready for an RV lifestyle? Start with a Hideout.

If you are looking to get out on the open road, you have arrived. The Hideout brand is the perfect introduction with its small single-axle travel trailers all the way up to our easy-to-tow fifth wheels. Hideout offers unparalleled features and amenities, combined with an extensive floorplan offering, allowing you to camp anywhere with the ones you love. Hideout's crisp, clean look will inspire you to get out and see the world through fresh eyes.

For more information, please visit keystonerv.com/hideout

Exclusive and Unexpected Features



MORryde® Step Above™ Steps
Ultra-Safe and secure main entry with strut assist. (N/A on 38' or LHS models.)



EXCLUSIVE MaxTurn Technology™
Durable, patented bent-tube frame design maximize hitch turning radius without specialty accessories. (FW models only.)



Furrion® Oven with Glass Cooktop
Chef-inspired appliance with lighted backslash that give you the perfect blend of performance, precision and style.



Power Tongue Jack
Easy-to-use jack makes RV setup fast and simple.



Central Vacuum System
Class exclusive built-in, easy cleanup. No need to bring along any extras.



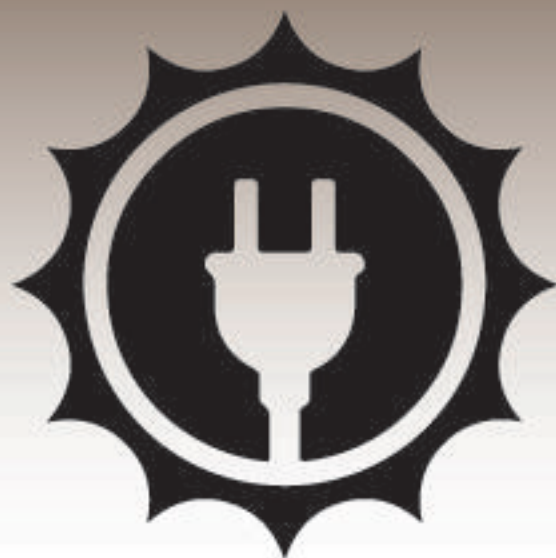
New Under-Mount Stainless Steel Sink w/Cover
Sleek under-mount sink that is flush with the countertop, preventing food/residue from collecting in bumps and ridges of typical RV sinks in this segment. (N/A LHS models)



Tinted Safety Glass Windows
Tinted windows assist in keeping your coach cool and the interior décor from fading.



U-Shaped Dinette with "Do More" Table (Select Models)
Multifunctional, free-standing dinette with adjustable legs that can used a bed base, coffee table, outdoor table and more.



Solar Prep
With wiring in place for plug-and-play solar panels and interior controls, Hideout makes it easy to add an aftermarket solar power system.



50" HDTV with Jensen® Stereo System (select models)
Designed specifically for RVs, Jensen® entertainment components are strenuously tested to endure vibration, UV exposure, humidity and temperature fluctuation.

Unbeatable Value



more product detail at
www.keystonerv.com/hideout



Slip into something a little more comfortable

From beginners to seasoned adventurers, families will enjoy the modern functionality of our newly re-designed Hideout lineup. Upgraded marbled countertops, textured-glass cabinet doors, stylish reclaimed wood-inspired flooring, residential batten ceiling strips, and garden tub with surround are just a few of the luxurious touches that simply cannot be found on most other RVs at this price point. Other new impressive features include panoramic windows in slide-boxes, hard-valance window treatments, and abundant storage in the bedroom and living area.

Two Décor Options

Lighten up with Timber's parchment leatherette, paired with tonal window treatments and wall coverings (shown right and left) or go bold with Lodge's rich browns and dramatic accents (shown below).



11 New Floorplans

All with upgraded stainless steel appliances, new bathroom designs, and maximized storage.

Entertainment center in new 29DFS opens to become a full-length storage cabinet.





more product detail at
www.keystonerv.com/hideout

Hideout LHS | TRAVEL TRAILERS

- **New** Furrion® glass cooktop (n/a on single-axles)
- **New** solid-look laminate, thick T-mold countertop (n/a on single axles)
- Lighted kitchen backsplash (n/a on single axles)
- Lighted kitchen & entertainment center glass inserts (n/a on single axles)
- **New** panoramic main slide-out windows
- Tinted safety glass windows
- Central vacuum system (n/a single axles)
- Zone switch lighting
- Porcelain toilet
- Shower surround (n/a single axles)
- Smooth entrance doors with window
- Smooth baggage doors
- Solar prep (n/a single axles)
- LP bottle covers (n/a single axles)
- Voyager observation camera prep (n/a single axles)
- Power tongue jack w/ light



175LHS | Single-axle, bunkhouse
 Weight: 3321 LBS. | Length: 21' 5"



176LHS | New single-axle, one slide, double bunkhouse w/ roof mount a/c & 6 cu. ft. fridge
 Weight: 3735 LBS. | Length: 21' 5"



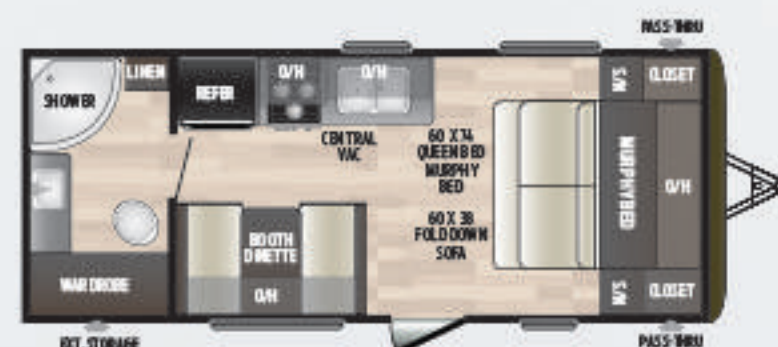
177LHS | Single-axle, rear dinette, pano view
 Weight: 3310 LBS. | Length: 21' 5"



178LHS | Single-axle, rear bath
 Weight: 3245 LBS. | Length: 21' 5"



179LHS | New single-axle, rear bathroom w/ roof mount a/c and 6 cu. ft. fridge
 Weight: 3720 LBS. | Length: 21' 5"



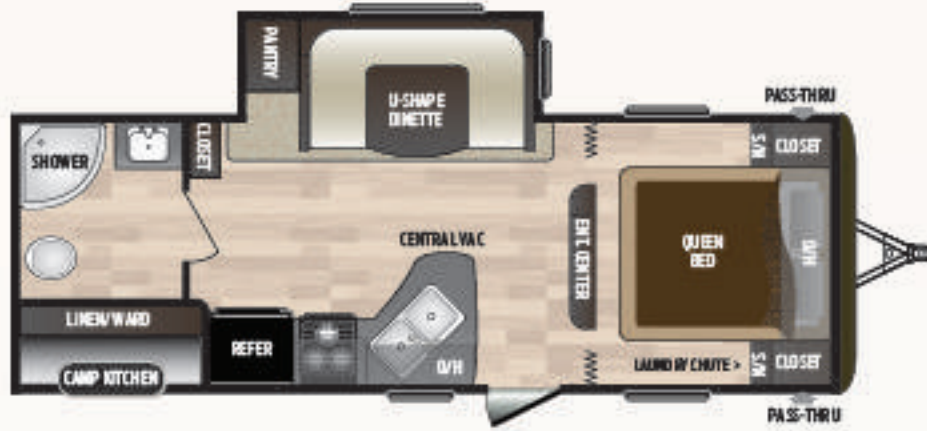
192LHS | Double-axle non-slide, rear bathroom, murphy bed
 Weight: 4421 LBS. | Length: 23' 11"



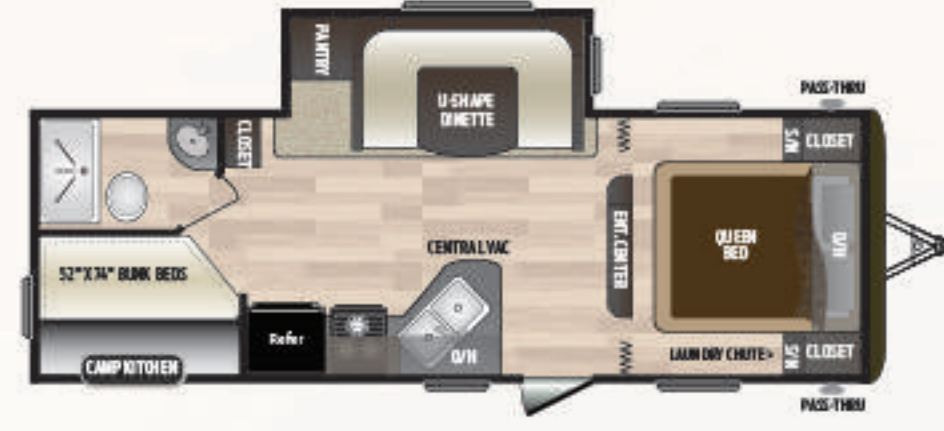
202LHS | Non-slide, rear dinette, pano view
Weight: 4438 LBS. | Length: 24' 11"



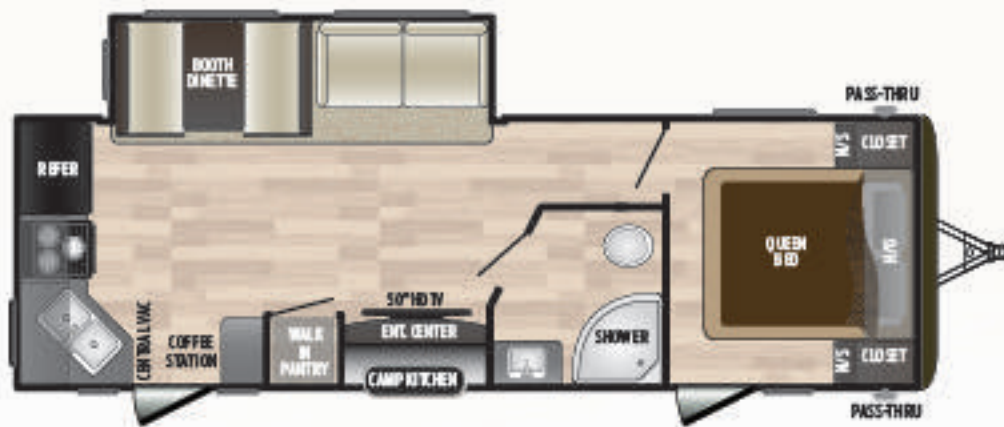
212LHS | Non-slide, double-over-double bunkhouse, murphy bed
Weight: 4696 LBS. | Length: 26' 4"



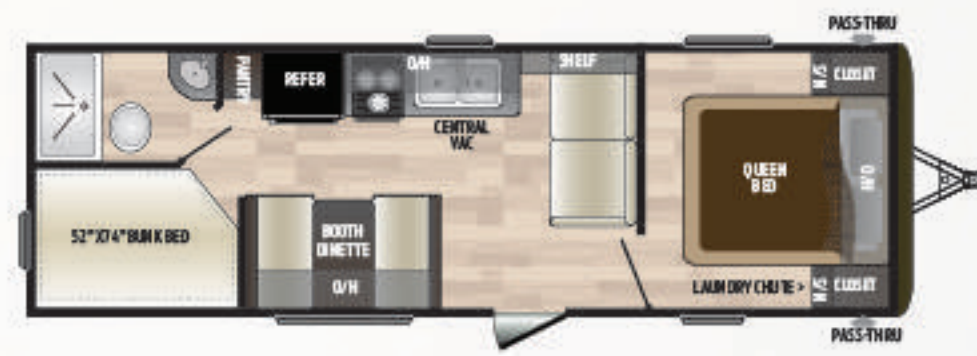
232LHS | One-slide, rear bathroom, u-shape dinette, camp kitchen
Weight: 5589 LBS. | Length: 28' 1"



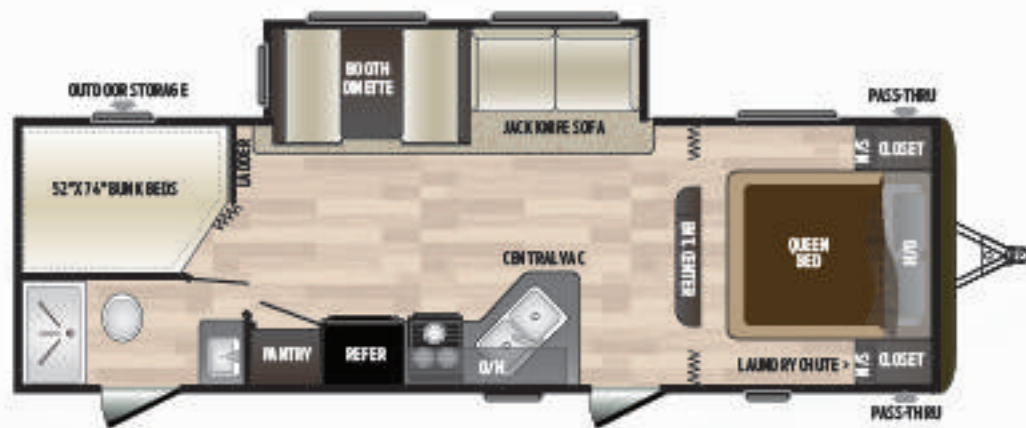
242LHS | One-slide, double-over-double bunkhouse, u-shape dinette, camp kitchen
Weight: 5543 LBS. | Length: 28' 5"



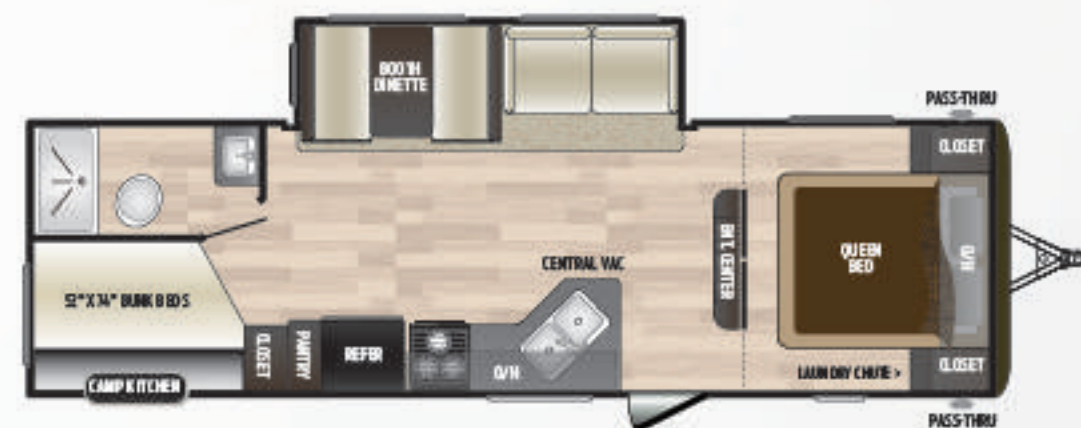
258LHS | One-slide, rear kitchen, private bedroom, 50" HDTV, camp kitchen, walk in pantry
Weight: 6123 LBS. | Length: 29' 11"



262LHS | Non-slide, double over double bunkhouse, private bedroom
Weight: 4958 LBS. | Length: 29' 3"



272LHS | One-slide, double-over-double bunkhouse, dual entry, full pantry
Weight: 6013 LBS. | Length: 30' 8"



274LHS | New one-slide, double-over-double bunkhouse, camp kitchen
Weight: 6175 LBS. | Length: 31' 6"



318LHS | New two-slide, bunkhouse, outdoor kitchen, toy chest
Weight: 7710 LBS. | Length: 35' 11"



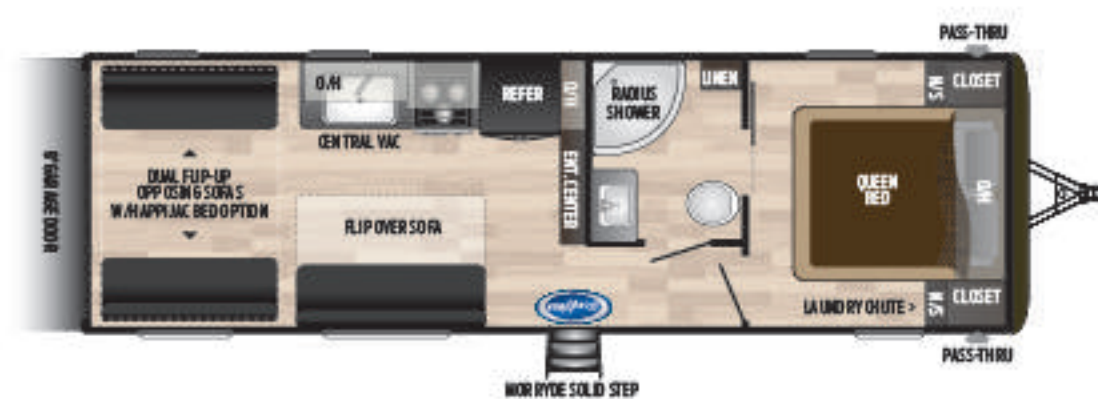
338LHS | New two-slide, bunkhouse, bath & a half, outdoor kitchen, private bedroom
Weight: 7985 LBS. | Length: 37' 11"



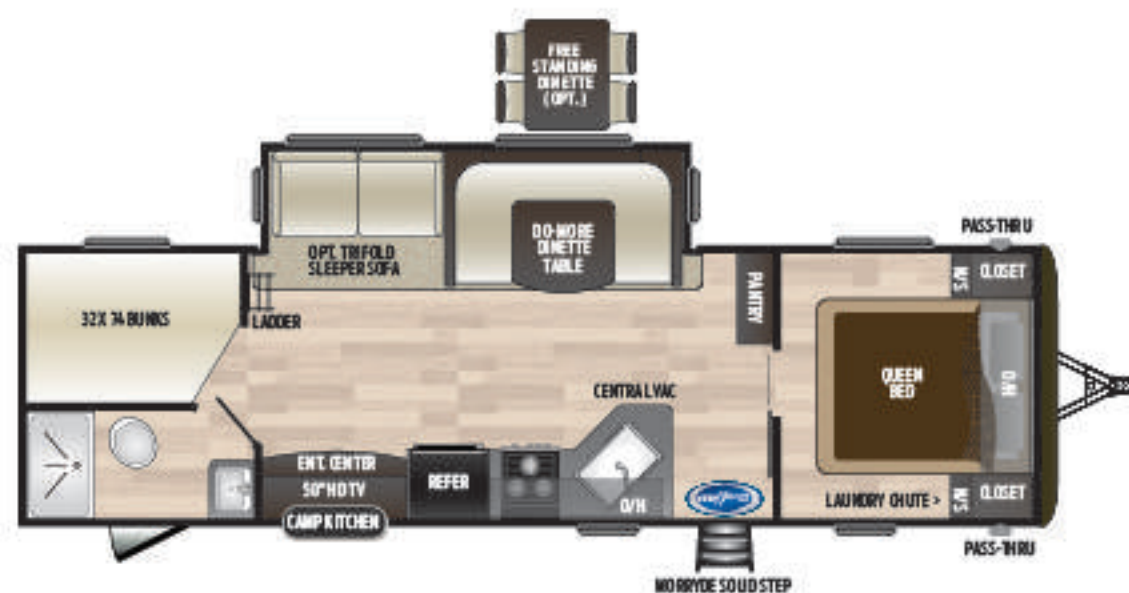
more product detail at
www.keystonerv.com/hideout

Hideout | LUXURY TRAVEL TRAILERS

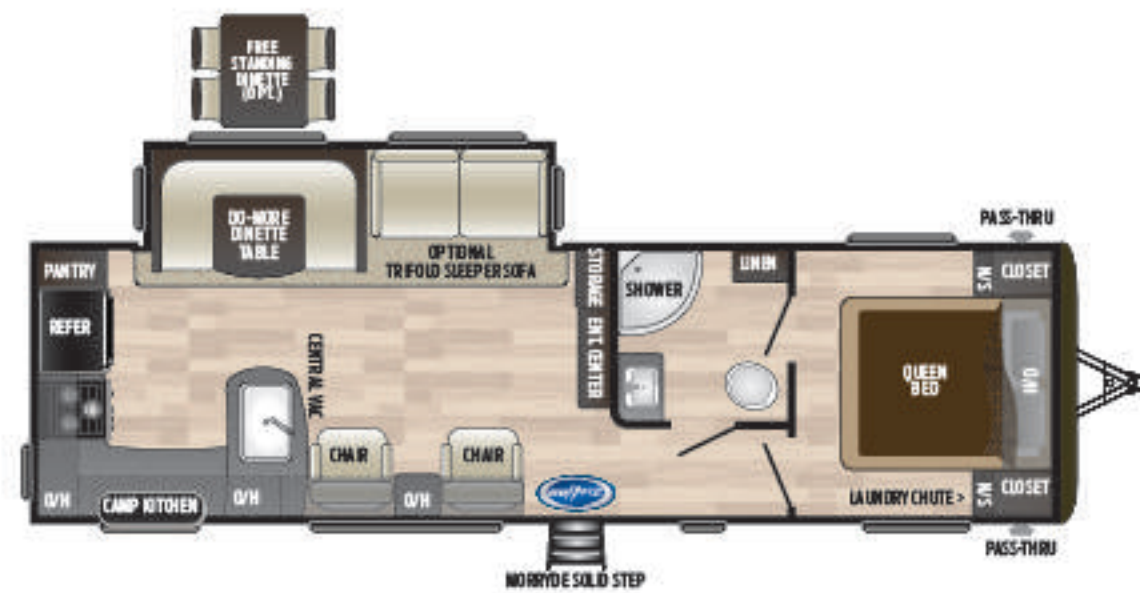
- **New** Furrion® glass cooktop with subway tile lighted backsplash
- One piece countertops
- **New** under-mount stainless steel sink with sink cover
- Upgraded faucet with sprayer
- **New** panoramic main slide-out windows
- Tinted safety glass windows
- U-shaped dinette with "Do More" table (select models)
- 50" HDTV with Jensen® stereo (select models)
- Central vacuum system
- Zone switch lighting
- Porcelain toilet
- Ultra-stable and secure MORryde® Step Above™ steps (n/a 38' models)
- Black tank flush
- Smooth metal front
- Smooth baggage and entry doors
- Friction-hinge door (n/a 38' models)
- Solar prep
- Power tongue jack w/ light
- Cold Mountain Package which includes a fully enclosed underbelly
- Voyager® observation camera prep



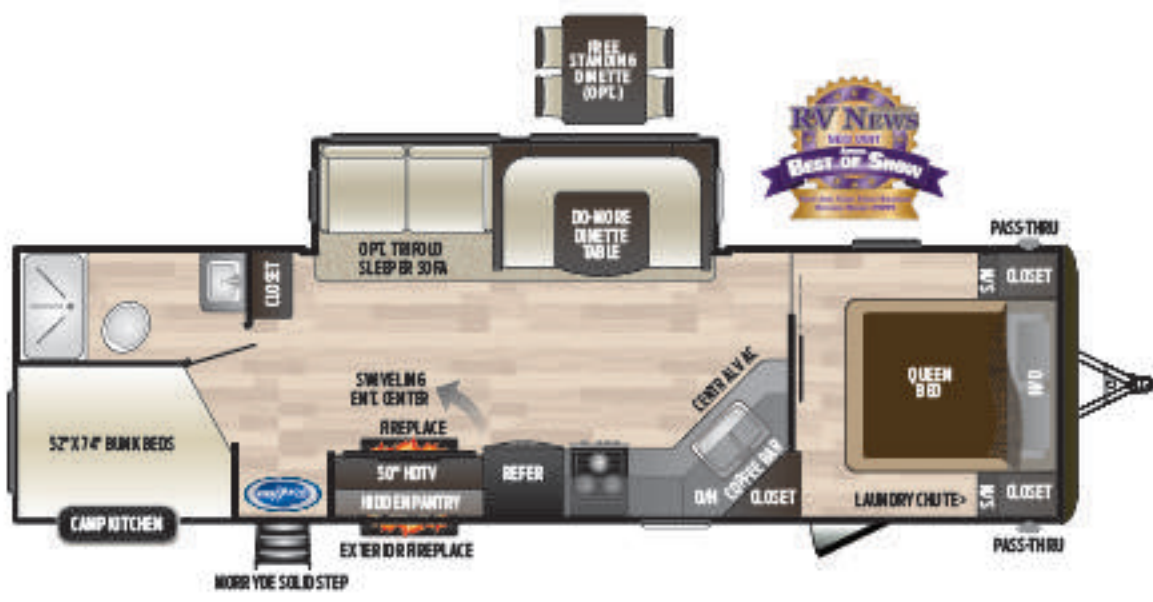
25TH New non-slide, toy hauler w/ happijac in rear
 Weight: 6190 LBS. | Length: 29' 11"



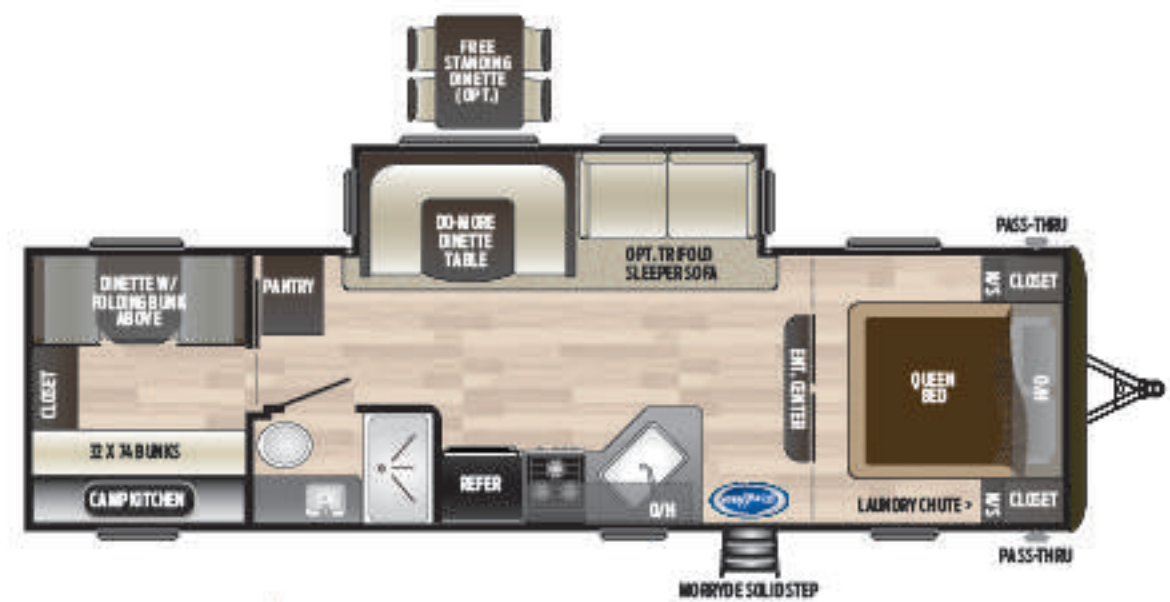
28BHS One-slide, double over double bunkhouse, camp kitchen, 50" HDTV
 Weight: 6827 LBS. | Length: 32' 9"



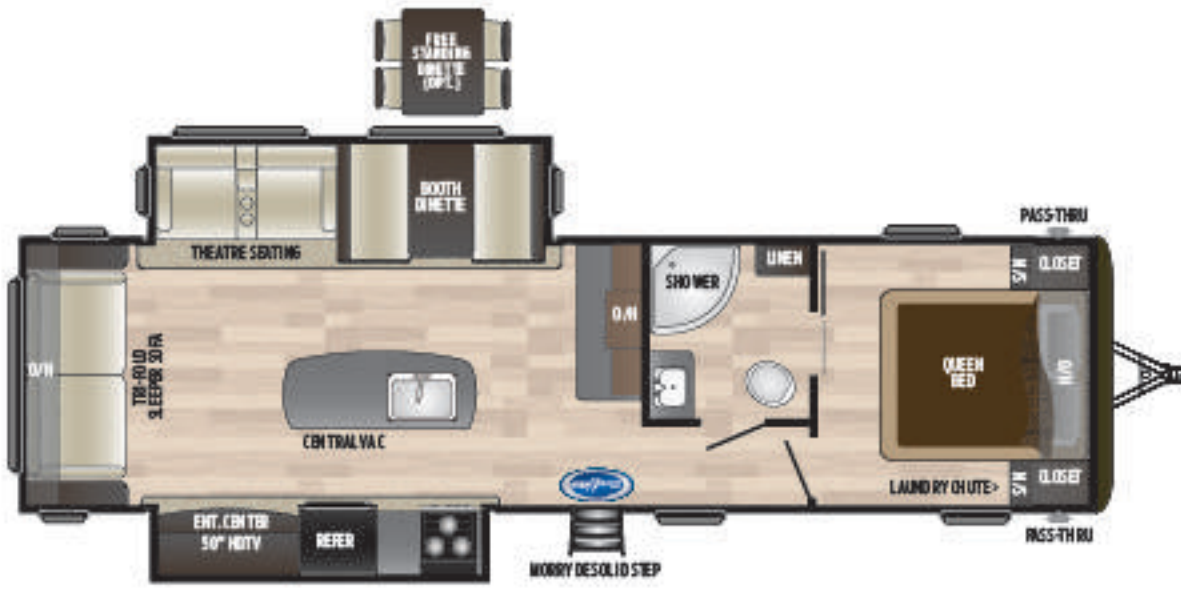
28RKS One-slide, rear kitchen w/ recliners, camp kitchen, walk through bathroom
 Weight: 6969 LBS. | Length: 32' 11"



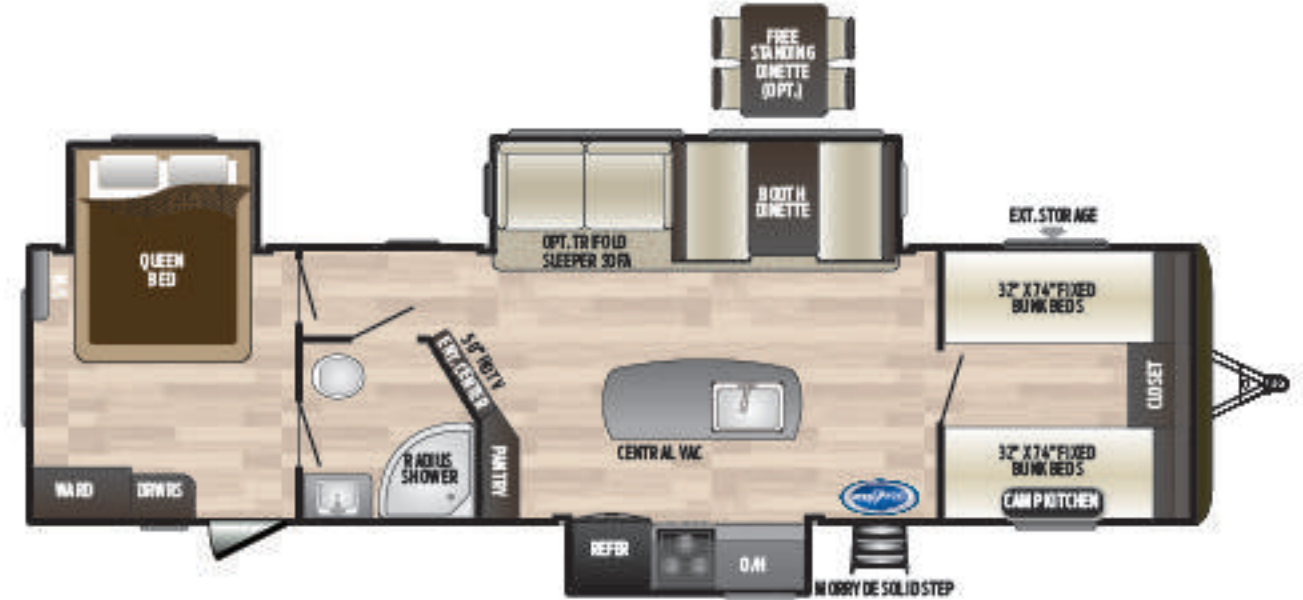
29DFS New one-slide double over double bunkhouse, hidden pantry, outdoor fireplace
Weight: 7200 LBS. | Length: 33'11"



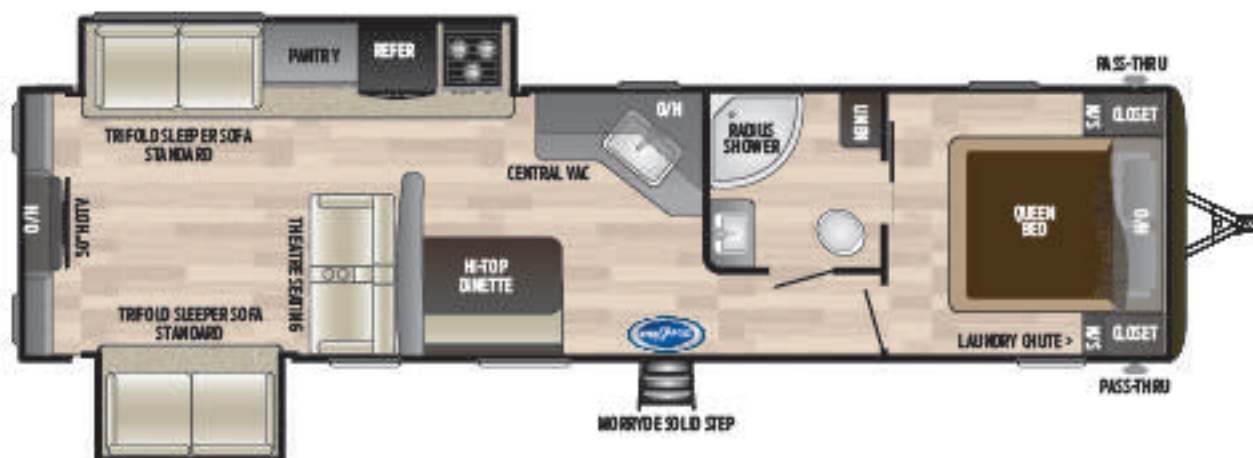
29BKS One-slide, bunkhouse w/ bunkroom dinette, camp kitchen
Weight: 6905 LBS. | Length: 33'4"



30RLDS Two-slide, rear living room w/ theatre seating, walk through bathroom, 50' HDTV
Weight: 7806 LBS. | Length: 34'11"



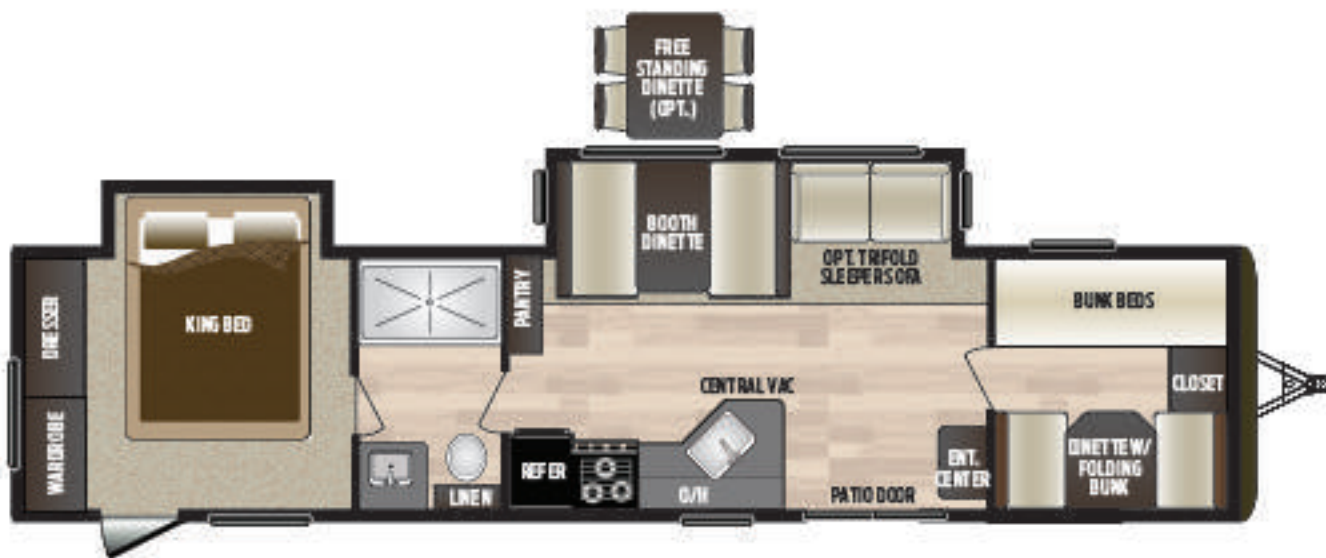
32FBTS New two-slide w/ bed slide, front quad bunk, camp kitchen, 50' HDTV
Weight: 8700 LBS. | Length: 36'11"



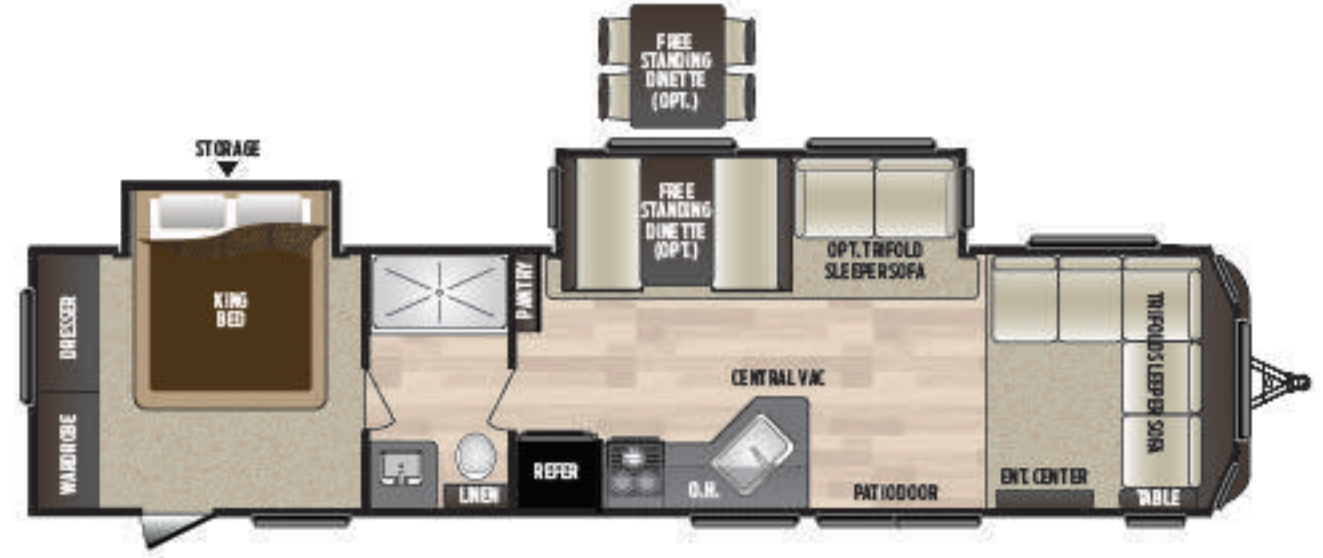
32RDDS New two-slide, rear living room w/ theatre seating & built in dinette, opposing tri-fold sofas, 50' HDTV
Weight: 7930 LBS. | Length: 36'8"



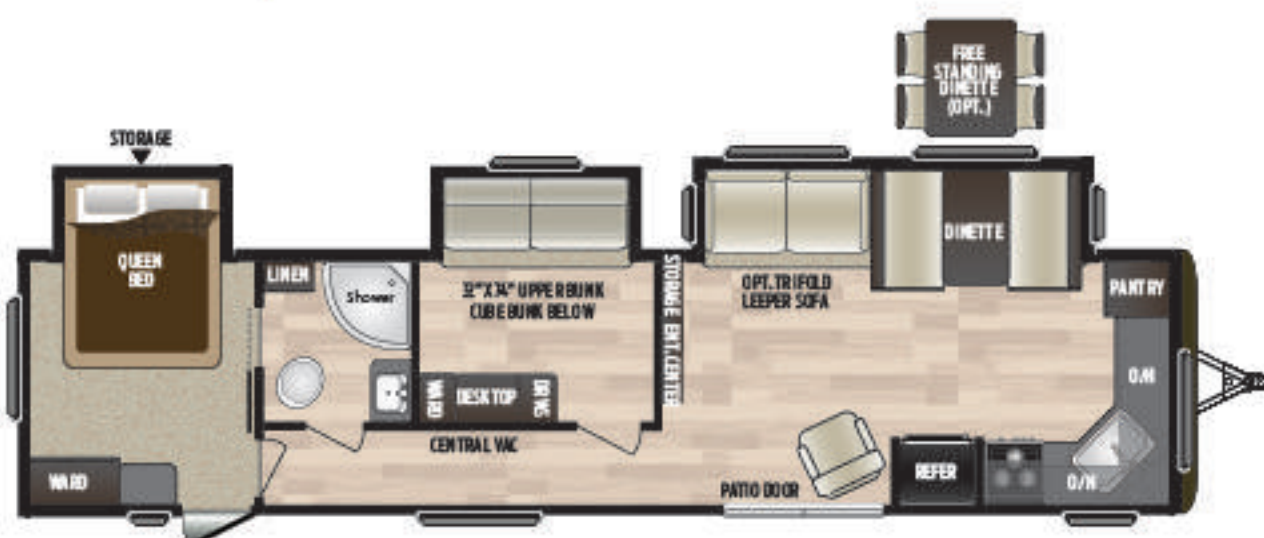
33BHDS New two-slide, bunkhouse, bath & a half, camp kitchen, 50' HDTV
Weight: 8310 LBS. | Length: 37'9"



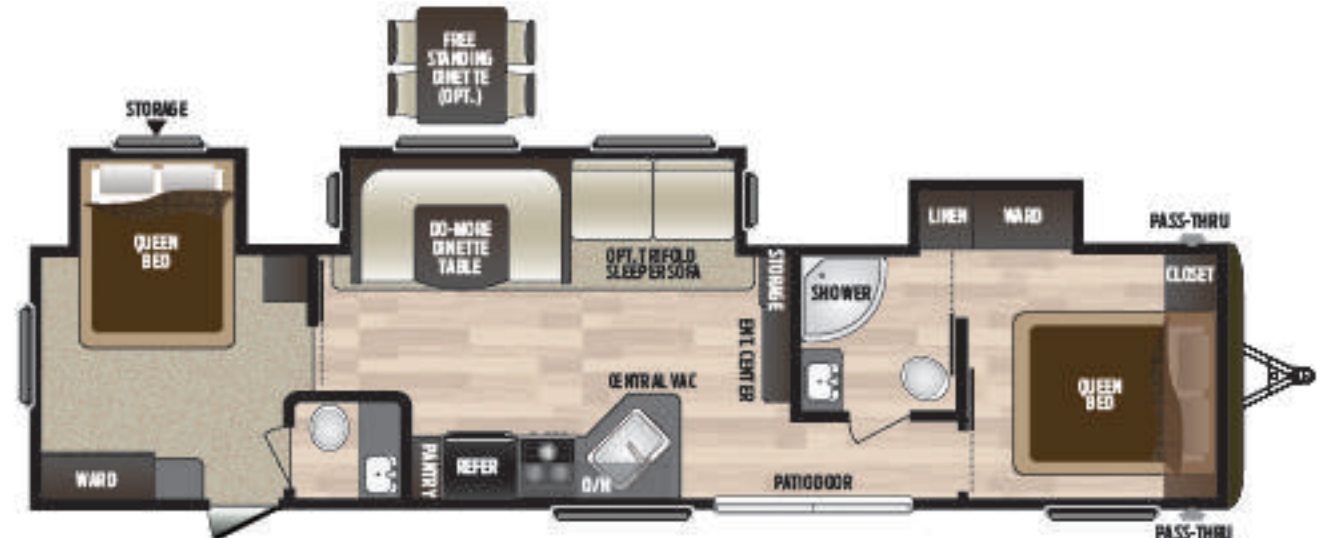
38BHDS Two-slide w/ bed slide, bunkhouse, residential refrigerator, patio door
Weight: 8312 LBS. | Length: 39'11"



38FDDS Two-slide w/ bed slide, front sectional, residential refrigerator, patio door
Weight: 8355 LBS. | Length: 39'11"



38FKTS Three-slide w/ bed slide, mid-bunkhouse, residential refrigerator, patio door
Weight: 9166 LBS. | Length: 39'11"



38FQTS Three-slide w/ bed slide, double queen bedroom, bath & a half, residential refrigerator, patio door
Weight: 9253 LBS. | Length: 39'11"



more product detail at
www.keystonerv.com/hideout

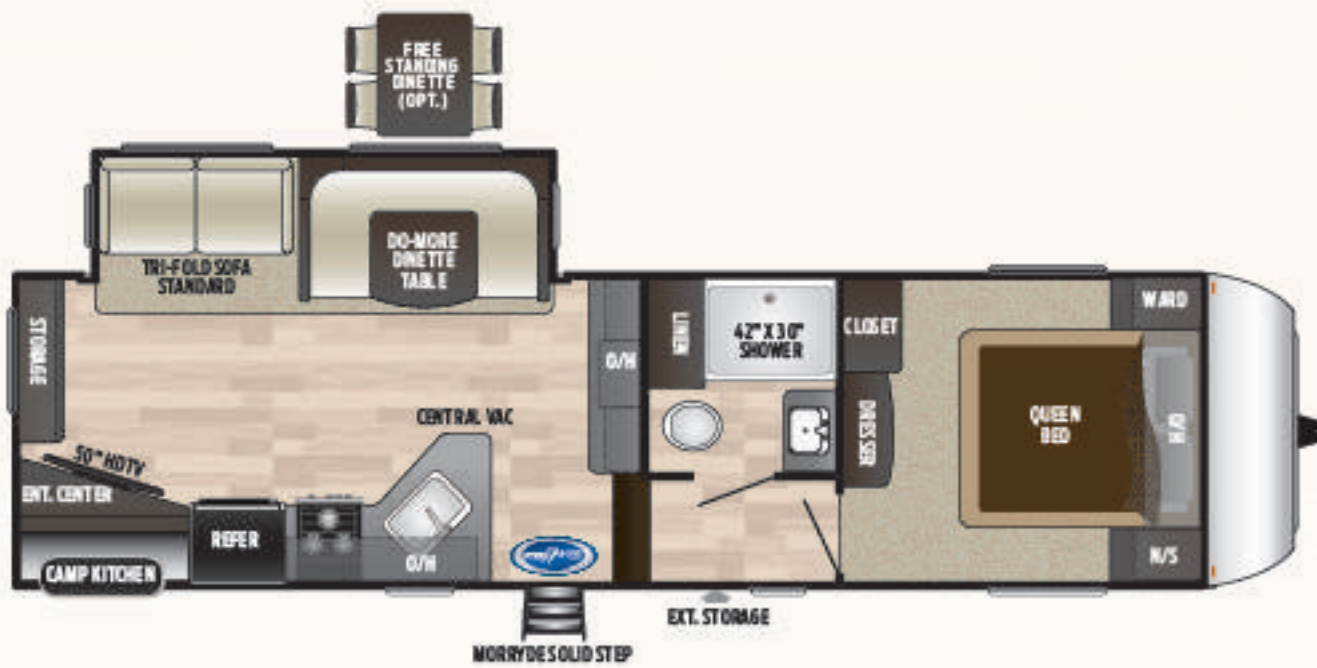
Hideout | LUXURY FIFTH WHEELS

- **New** Furrion® glass cooktop with subway tile lighted backsplash
- One piece countertops
- **New** under-mount stainless steel sink w/ sink covers
- U-shaped dinette with "Do More" table
- New panoramic windows in main slide-out
- 50" HDTV with Jensen® stereo (select models)
- Tri-fold sofa, standard
- Central vacuum system
- Porcelain toilet
- Zone switch lighting
- Ultra-stable and secure MORryde® Step Above™ steps
- Black tank flush
- Fiction-hinge door
- Solar prep
- Electric stab jacks
- Aluminum wheels
- Voyager observation camera prep
- Patented Hitch Vision™ for faster and easier hook-up

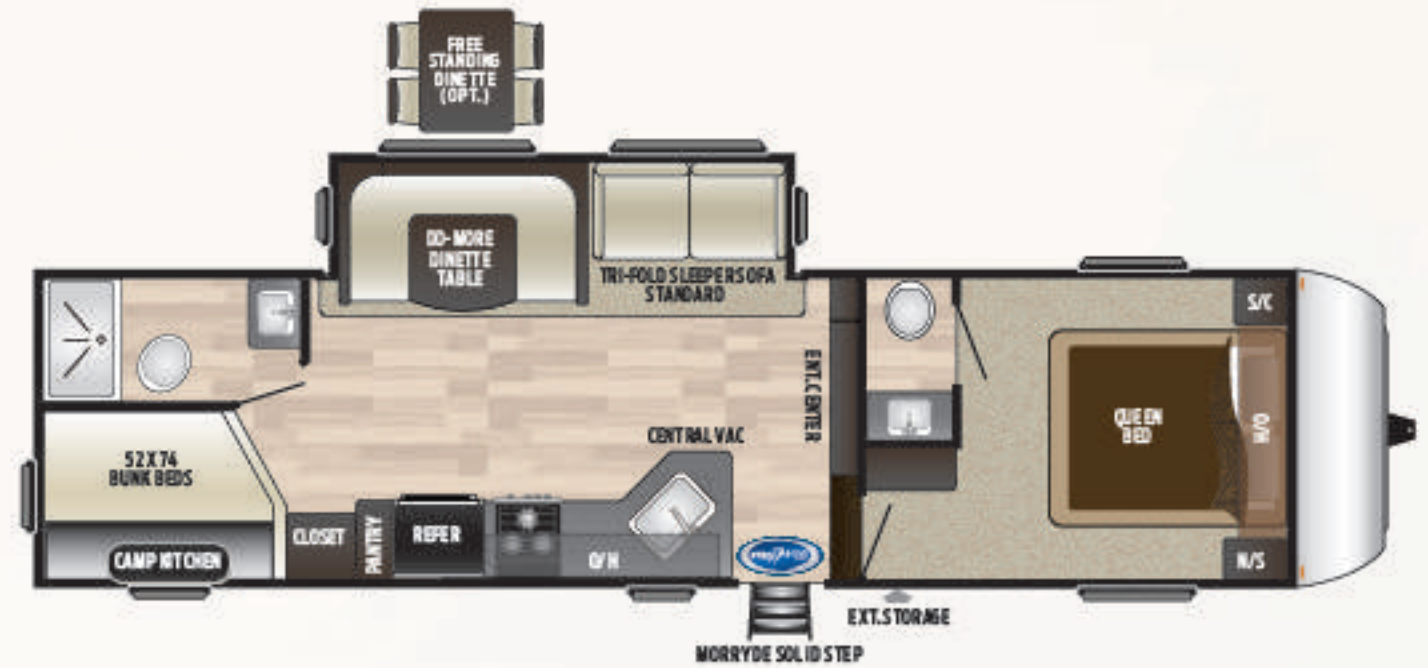
Worry-free Extended Season Camping

Interested in camping longer into the fall and getting out earlier in the spring? Hideout offers a Cold Mountain Package that makes this possible. An enclosed underbelly with forced heat helps prevent tanks from freezing when temperatures start to dip. Water lines are given an extra measure of protection by being run in your Hideout's flooring.

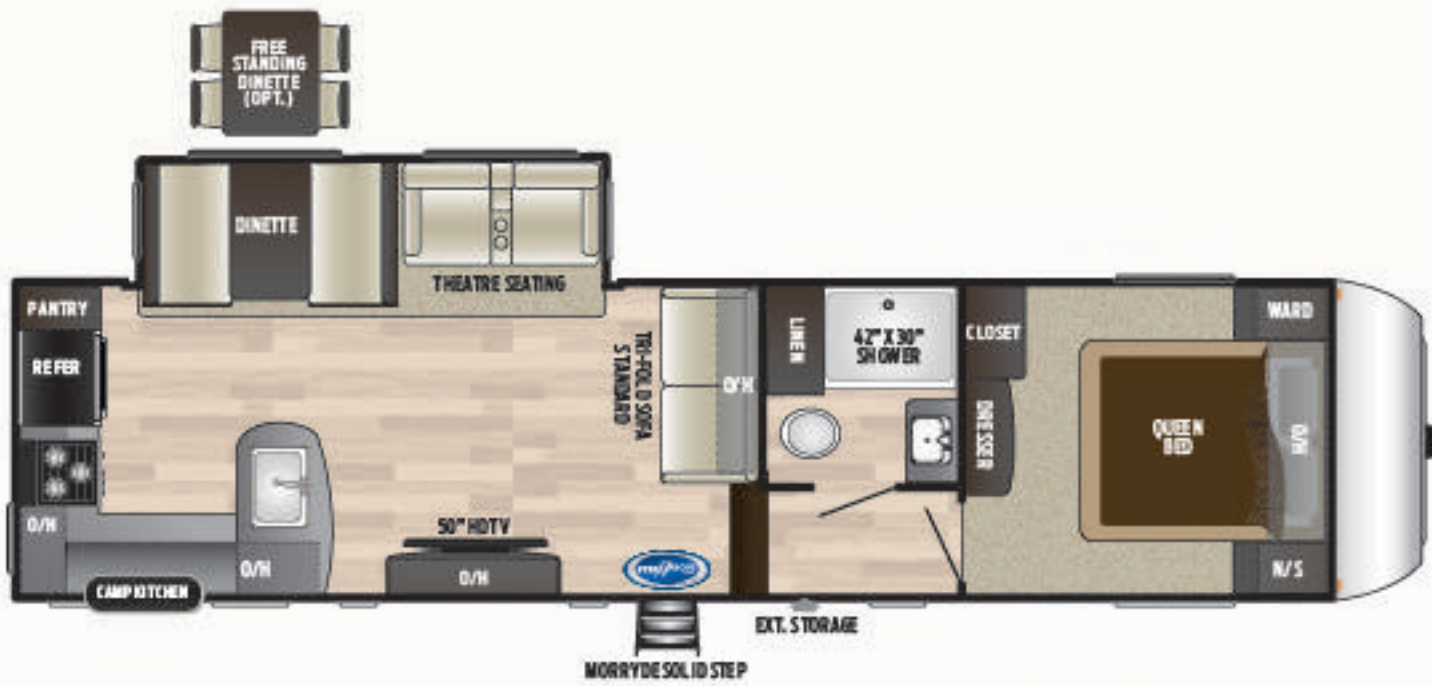
Cold Mountain Package is not available on LHS or single-axle models.



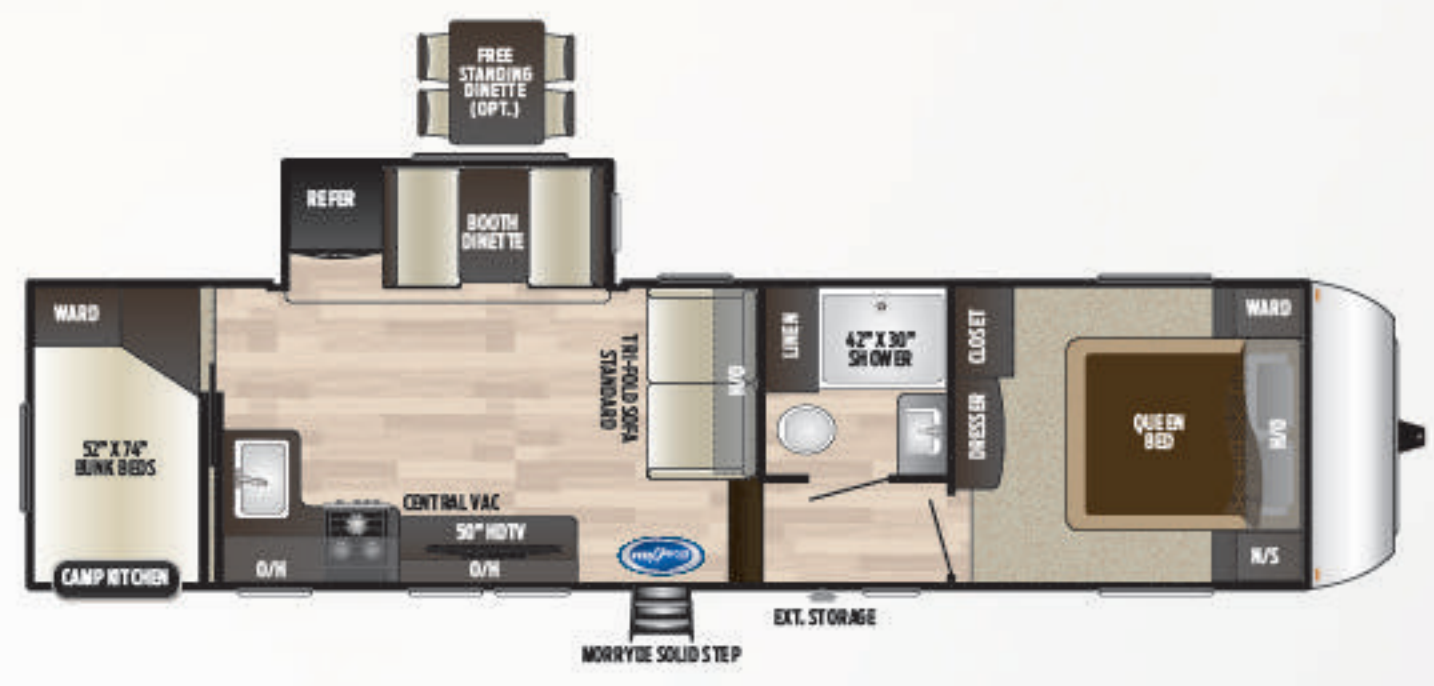
262RES One-slide, rear entertainment, camp kitchen,
re-designed bedroom
Weight: 8025 LBS. | Length: 30' 11"



281DBS One-slide bunkhouse, camp kitchen,
bath & a half, re-designed bedroom
Weight: 8115 LBS. | Length: 32' 4"



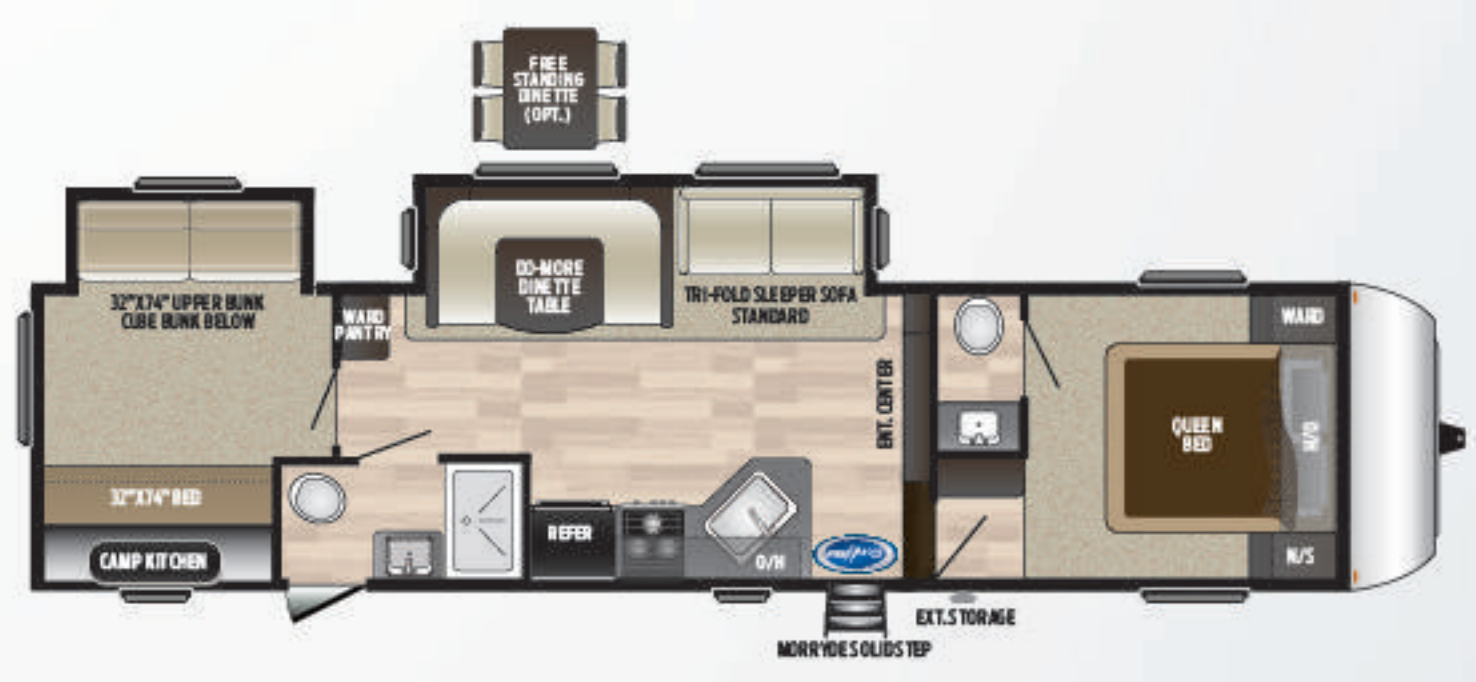
292MLS One-slide, rear kitchen, camp kitchen,
re-designed bedroom
Weight: 8384 LBS. | Length: 33' 7"



295BHS New one-slide, double over double bunkhouse,
camp kitchen, re-designed bedroom
Weight: 8360 LBS. | Length: 33' 11"



299RLDS Two-slide, rear entertainment, island kitchen,
camp kitchen, re-designed bedroom
Weight: 9020 LBS. | Length: 33' 0"



308BHDS Two-slide, bunkhouse, bath & a half,
camp kitchen, re-designed bedroom
Weight: 9115 LBS. | Length: 35' 6"

LHS TRAVEL TRAILERS & SINGLE AXLES

MODEL	WEIGHT	CARRYING CAPACITY	HITCH	FRESH WATER	WASTE WATER	GRAY WATER	LPG	LENGTH*	HEIGHT
175LHS	3321	1079	485	27	30	30	20	21' 5"	10' 2"
176LHS	3735	765	520	27	30	30	20	21' 5"	10' 2"
177LHS	3310	1090	540	27	30	30	20	21' 5"	10' 2"
178LHS	3245	1195	440	27	30	32	20	21' 5"	10' 2"
179LHS	3720	760	480	27	32	30	20	21' 5"	10' 2"
192LHS	4421	2579	540	43	30	30	40	23' 11"	10' 3"
202LHS	4438	2762	490	43	39	39	40	24' 11"	10' 3"
212LHS	4696	2504	545	43	30	39	40	26' 4"	10' 3"
232LHS	5589	2021	610	43	30	39	40	28' 1"	11' 1"
242LHS	5543	2107	650	43	30	30	40	28' 5"	11' 1"
258LHS	6123	1637	760	43	39	69	40	29' 11"	11' 1"
262LHS	4958	2587	545	43	30	39	40	29' 3"	10' 3"
272LHS	6013	1767	780	43	30	30	40	30' 8"	11' 1"
274LHS	6175	1595	775	43	30	39	40	31' 6"	11' 0"
318LHS	7620	2080	900	43	39	69	40	35' 11"	11' 2"
338LHS	7985	1715	935	43	78	69	40	37' 11"	11' 2"

TRAVEL TRAILERS

MODEL	WEIGHT	CARRYING CAPACITY	HITCH WEIGHT	FRESH WATER	WASTE WATER	GRAY WATER	LPG	LENGTH*	HEIGHT
25TH	6190	3510	880	43	39	39	40	29' 11"	11' 3"
26RLS	6521	1304	825	43	39	39	40	31' 0"	11' 1"
28BHS	6827	2838	865	43	39	69	40	32' 9"	11' 0"
28RKS	6969	2691	860	43	39	78	40	32' 11"	11' 0"
29BKS	6905	2690	795	43	39	39	40	33' 4"	11' 0"
29DFS	7200	2480	920	43	30	78	40	33' 11"	11' 0"
30RLDS	7806	2049	1055	43	39	78	40	34' 11"	11' 2"
32FBTS	8745	2755	1150	43	39	39	40	36' 11"	11' 2"
32RDDS	7880	1890	970	43	39	39	40	36' 8"	11' 2"
33BHDS	8310	1590	1115	43	78	69	40	37' 9"	11' 2"
38BHDS	8312	1658	1170	43	39	39	60	39' 11"	11' 2"
38FDDS	8355	1645	1205	43	39	39	60	39' 11"	11' 2"
38FKTS	9166	1834	1200	43	39	78	60	39' 11"	11' 4"
38FQTS	9253	2107	1200	43	78	78	60	39' 11"	11' 4"

FIFTH WHEELS

MODEL	WEIGHT	CARRYING CAPACITY	HITCH WEIGHT	FRESH WATER	WASTE WATER	GRAY WATER	LPG	LENGTH*	HEIGHT
262RES	8025	2475	1605	43	39	78	60	30' 11"	12' 4"
281DBS	8115	2485	1670	43	69	30	60	32' 4"	12' 4"
292MLS	8435	2565	1510	43	39	78	60	33' 7"	12' 5"
295BHS	8505	2495	1700	43	39	78	60	33' 11"	12' 5"
299RLDS	9020	2180	1605	43	39	78	60	33' 0"	12' 5"
308BHDS	9115	2585	1820	43	78	39	60	35' 6"	12' 5"

DISCLAIMER: Product information is as accurate as possible as of the date of publication of this brochure. All features, floor plans, and specifications in this brochure are subject to change without notice. Please also consult Keystone's web site at www.keystonerv.com for more current product information and specifications. Tow Vehicle Disclaimer. CAUTION: Owners of Keystone recreational vehicles are solely responsible for the selection and proper use of tow vehicles. All customers should consult with a motor vehicle manufacturer or their dealer concerning the purchase and use of suitable tow vehicles for Keystone products. Keystone disclaims any liability or damages suffered as a result of the selection, operation, use or misuse of a tow vehicle. KEYSTONE'S LIMITED WARRANTY DOES NOT COVER DAMAGE TO THE RECREATIONAL VEHICLE OR THE TOW VEHICLE AS A RESULT OF THE SELECTION, OPERATION, USE OR MISUSE OF THE TOW VEHICLE. *Length is defined as the distance from the centerline of hitch pin/coupler to rear bumper of trailer. Please review owner's manual prior to purchase for more information on service warranties, extended use, towing and maintenance. Owner's manuals can be found at keystonerv.com.

	TT	FW	LHS TT	SINGLE
EXTERIOR				
HIDEOUT PATENTED HITCH VISION™	-	\$	-	-
GEL-COATED, MAXTURN TECHNOLOGY™ FIBERGLASS FRONT CAP	-	\$	-	-
ELECTRIC ADJUSTABLE FRONT LANDING GEAR	-	\$	-	-
DIAMOND PLATE	\$	-	\$	\$
LIGHTED ADJUSTABLE POWER AWNING	\$	\$	\$	\$
BLACK TANK FLUSH	\$	\$	-	-
OUTSIDE 110v RECEPTACLE	\$	\$	\$	\$
E-COATED WHEELS	\$	-	\$	\$
XL ENTRY ASSIST HANDLE	\$	\$	-	-
EXTERIOR TV BRACKET	\$	\$	\$	-
EXTERIOR TV CABLE HOOKUP	\$	\$	\$	-
COLD MOUNTAIN PACKAGE	\$	\$	-	-
POWDER COATED I-BEAM FRAME	\$	\$	\$	\$
DEXTER® E-Z LUBE® AXLES	\$	\$	\$	\$
FULL LENGTH OUTRIGGERS	\$	\$	\$	\$
DUAL BATTERY RACK	\$	\$	\$	-
EXTERIOR SPEAKERS	\$	\$	\$	\$
POWER TONGUE JACK	\$	-	\$	-
BLACK RADIUS WINDOW FRAMES	\$	\$	\$	\$
TV ANTENNA WITH BOOSTER	\$	\$	\$	\$
FULL WALK-ON ROOF	\$	\$	\$	\$
RADIUS ENTRY DOORS	\$	\$	\$	\$
OVERSIZED PASS-THRU STORAGE	\$	\$	\$	\$
SMOOTH BAGGAGE DOORS	\$	\$	\$	\$
RAIN GUTTERS WITH DOWN SPOUTS	\$	\$	\$	\$
TRU-FIT™ FIVE POINT SLIDE-OUT CONSTRUCTION	\$	\$	\$	-
ROTO-CAST SEAMLESS HOLDING TANKS	\$	\$	\$	\$
HURRICANE STRAPS REINFORCED STRUCTURE	\$	\$	\$	\$
HEAVY DUTY STABILIZER JACKS	\$	\$	\$	\$
RADIAL TIRES	\$	\$	\$	\$
CAMBERED CHASSIS	\$	\$	\$	\$
96" EXTERIOR WIDTH	\$	\$	\$	\$
EXTERIOR SHOWER	0	\$	0	-
SPARE TIRE AND CARRIER	0	0	0	\$
REAR LADDER (MOST MODELS)	0	0	-	-
MORRYDE® SECURE STEP™ (N/A 38' MODELS)	\$	\$	-	-
FRICTION HINGE DOOR	\$	\$	-	-
VOYAGER BACKUP CAMERA PREP	\$	\$	\$	-
INTERIOR				
TT Hideout Luxury Travel Trailers FW Hideout Luxury Fifth Wheels LHS TT LHS Travel Trailers SINGLE LHS Single Axle Travel Trailers				
\$ STANDARD 0 OPTIONAL - NOT AVAILABLE				

	TT	FW	LHS TT	SINGLE
RESIDENTIAL BATTEN STRIPS ON CEILING	\$	\$	\$	\$
TRI-FOLD SLEEPER SOFA	0	\$	-	-
FREESTANDING DINETTE (SELECT MODELS)	0	0	-	-
PLEATED SHADES IN LIVING AREA	\$	\$	\$	-
FULL STRUTTED STORAGE UNDER MASTER BED	\$	\$	-	-
HD LED TV	\$	\$	0	-
50" HD LED TV (SELECT MODELS)	\$	\$	-	-
INTERIOR SURROUND SOUND SPEAKERS	\$	\$	\$	\$
NAME BRAND BLUETOOTH DVD/CD/MP3 STEREO	\$	\$	\$	\$
HIDDEN LAUNDRY CHUTE	\$	-	\$	-
MICROWAVE	\$	\$	\$	\$
MONITOR PANEL	\$	\$	\$	\$
ZONE SWITCH LIGHTING	\$	\$	\$	-
6 CU. FT. REFRIGERATOR (176LHS AND 179LHS SINGLES ONLY)	\$	\$	\$	\$
8 CU. FT. REFRIGERATOR	-	\$	-	-
LED LIT BACKSPLASH	\$	\$	\$	-
RESIDENTIAL REFRIGERATOR (38BHDS, 38F00S, 38FKTS, 38FQTS ONLY)	\$	-	-	-
BALL BEARING DRAWER GUIDES	\$	\$	\$	\$
12 VOLT 55 AMP CONVERTER	\$	\$	\$	-
13,500 BTU AIR CONDITIONER	\$	-	\$	0
15,000 BTU AIR CONDITIONER	0	\$	0	-
50 AMP SERVICE W/ 2ND A/C PREP	0	0	0	-
2ND A/C (50 AMP REQUIRED)	-	0	-	-
8K BTU AIR CONDITIONER	-	-	-	\$
BUILT-IN 30,000 BTU FURNACE	\$	\$	\$	-
20K BTU FURNACE	-	-	-	\$
3 CU. FT. GAS/ELECTRIC REFER (NON SLIDES)	-	-	-	\$
GAS/ELECTRIC DSI WATER HEATER	0	\$	-	-
FLEX PEX TUBING WITH 10 YEAR WARRANTY	\$	\$	\$	\$
81" INTERIOR HEIGHT	\$	-	\$	-
TUB SURROUND	\$	\$	\$	-
PORCELAIN FOOT FLUSH TOILET	\$	\$	\$	-
RG6 CABLE AND SATELLITE WIRING	\$	\$	\$	\$
4 1/2" CROWNED ROOF	\$	\$	\$	\$
LOOMED COLOR CODED WIRING	\$	\$	\$	\$
FURRIOR® GLASS TOP OVEN	\$	\$	\$	-
REVERSIBLE DINETTE CUSHIONS	\$	\$	\$	\$
HIGH-RISE KITCHEN FAUCET	\$	\$	\$	\$
KITCHEN SINK COVER	\$	\$	-	-
SAFETY				
FIRE EXTINGUISHER	\$	\$	\$	\$
SMOKE DETECTOR	\$	\$	\$	\$
LP DETECTOR	\$	\$	\$	\$
CO DETECTOR	\$	\$	\$	\$
SAFETY CHAINS	\$	\$	\$	\$
EMERGENCY BREAKAWAY SWITCH	\$	\$	\$	\$

BUILT FOR THE LONG HAUL



PRINT 1.2019



**Keystone RV
Company**