



# Alta

TRAVEL TRAILERS



*Alta*  
Travel Trailers

[EastToWestRV.com/Alta](http://EastToWestRV.com/Alta)  
A DIVISION OF FOREST RIVER

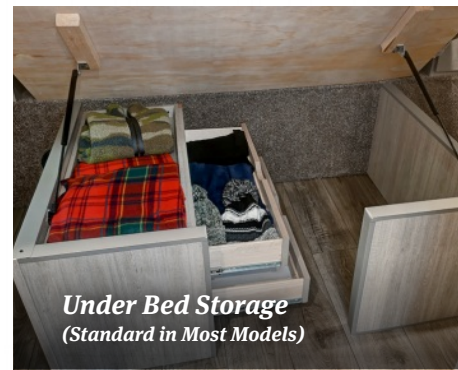




2850 KRL



King Size Bed  
(Standard in Most Models)



Under Bed Storage  
(Standard in Most Models)



30 x 36 Residential Shower



EXTENDED CLIMATE GUARD

**AZDEL**  
ONBOARD®

- |   |   |  |   |
|---|---|--|---|
| 1 R14", 2 x 3 Aluminum double welded floor joist, 16" on center                   | 6 One-piece Dacor II® roof with 12 year limited warranty                                    | 10 Twin 20 LB LP bottles with auto switch over & easy access cover | 16 Tinted safety glass windows                              |
| 2 Thermofoil insulation with glued and screwed 5/8" tongue & groove plywood floor | 7 Automotive painted fiberglass front cap with diamond plate rock guard & LED marker lights | 11 15,000 BTU Dual ducted A/C                                      | 17 Enclosed and forced-air heated underbelly                |
| 3 R9", 2" Aluminum double welded sidewalls  | 8 Heavy duty slam-latch baggage doors with drop frame and finished pass thru storage        | 12 Electric power tongue jack with LED light                       | 18 One piece Congoleum® linoleum flooring throughout        |
| 4 Laminated sidewalls with Azdel® on board  | 9 4-Power stabilizer jacks with individual controls   | 13 Aluminum triple entry step                                      | 19 High density block foam insulated laminated walls & roof |
| 5 R15", Aluminum trussed vacuum-bonded roof                                       |   | 14 Aluminum wheels with nitrogen filled tires                      | 20 Aluminum framed insulated front cap                      |
|   |   | 15 Drop frame  | 21 35,000 BTU furnace                                       |

\*EQUIVALENT THERMAL RESISTANCE, R-VALUE



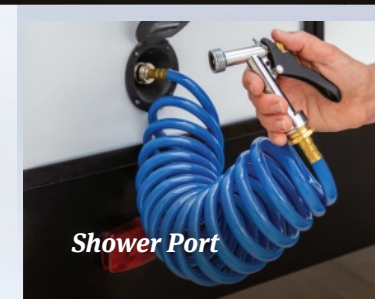
Outside Kitchen



MORryde® Step with Tool Box  
(Optional)



Universal Docking  
Station



Shower Port



Large Drop Frame  
Pass Through Storage

# Alta Standards & Options

## Luxe Décor Package (Mandatory)

- ▶ 81" Interior Ceiling Height
- ▶ 10.7 Cubic Foot Stainless Steel Refrigerator
- ▶ Solid Bedroom Door Where Applicable
- ▶ Cable/Satellite Ready
- ▶ USB Charging Stations (Beds, Bunks, & Tables Where Available)
- ▶ 3-Burner Range w/Oven In Place of Cooktop
- ▶ Sink Cover
- ▶ Tri-fold "Ez-Out" Sleeper Sofa
- ▶ Designer Solid Surface Countertops
- ▶ Skylight Above Shower/Tub
- ▶ Interior LED Lights
- ▶ ABS Tub Surround & Cabinet In Bath Where Available
- ▶ Oversized Window Package With Valance and Lambrequins
- ▶ Window Treatments
- ▶ Black Roller Shades
- ▶ Porcelain Foot Flush Toilet
- ▶ 48" Dinette Where Available, With Pullout Storage Drawers Underneath On Roller Guides
- ▶ Upgraded Congoleum® Linoleum Flooring
- ▶ 35,000 BTU Furnace
- ▶ Furrion® 2 Zone Sound System With Bluetooth & HDMI Connectivity
- ▶ Upgraded Stainless Steel Appliances
- ▶ Pet Drawer
- ▶ Under Bed Storage

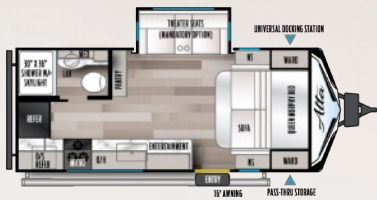
- ▶ High Definition/Amplified TV Antenna w/Wi-Fi Prep
- ▶ Furrion® Backup Camera Prep
- ▶ Rear Ladder
- ▶ Diamond Plate Front Rock Guard
- ▶ Aluminum Triple Entry Steps
- ▶ Exterior LED Lights
- ▶ Detachable Power Cord
- ▶ Power Tongue Jack With LED Light
- ▶ Exterior Swing Arm Entry Assist Handle
- ▶ 4-Point Electric Stabilizer Jacks
- ▶ Two Marine Grade Exterior Speakers
- ▶ Tinted Windows
- ▶ Upper Bunk Window
- ▶ R.V.Q. Quick Connect
- ▶ High Pressure Fresh Water Fill

## Options

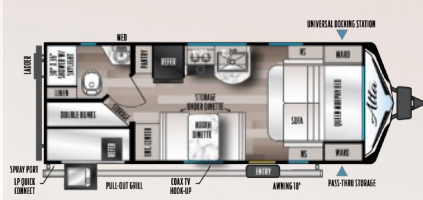
- ▶ Goodyear® Tires (Mandatory on all models)
- ▶ Goodyear® Spare Tire & Carrier
- ▶ MORryde® Solid Entry Step With Tool Box
- ▶ Theatre Seating IPO Tri-fold Sofa
- ▶ 60" x 80" Queen Bed
- ▶ Furrion® 40" LED TV (N/A 1900 MMK, 2100 MBH, 2600 KRB, 3150 KBH)
- ▶ Furrion® 32" LED TV
- ▶ 50 Amp Service With 2nd A/C Prep: (Mandatory On 2800 KBH, 2810 KIK, 2850 KRL, 3150 KBH)
- ▶ 50 Amp Service With 13,500 BTU 2nd A/C Installed
- ▶ Tri-fold sofa IPO Booth (2350 KRK only)
- ▶ Free-standing Dinette IPO Booth (N/A 1900 MMK, 2100 MBH, 2350KRK)
- ▶ Theatre seating in place of booth (2350 KRK only)
- ▶ Alta 50 Watt Solar Package (Solar panel, controller, battery, box, and disconnect. \*Mandatory on all models\*)
- ▶ West Coast Power Package (170 watt panel, 30 amp controller and second battery)

## Advantage Package (Mandatory)

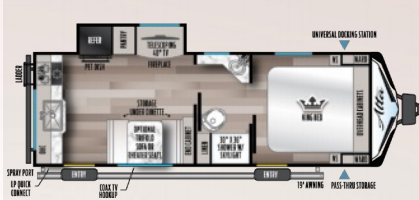
- ▶ 5" Vacuum Bonded Roof
- ▶ Aluminum Rims
- ▶ Universal Docking Station
- ▶ Water Heater Bypass
- ▶ Nitro Filled Radial Tires
- ▶ Power Awning With LED Lights
- ▶ Enclosed & Heated Underbelly
- ▶ Flush Floor Slide Out Where Available
- ▶ 15,000 BTU Ducted Air Conditioner With Quick Cool
- ▶ Black Tank Flush
- ▶ Outside Shower With Hot & Cold Water



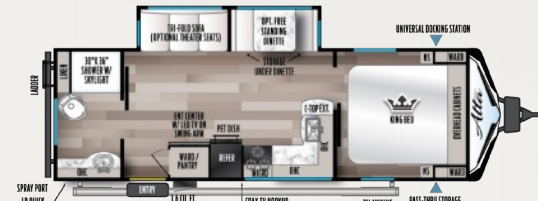
1900 MMK



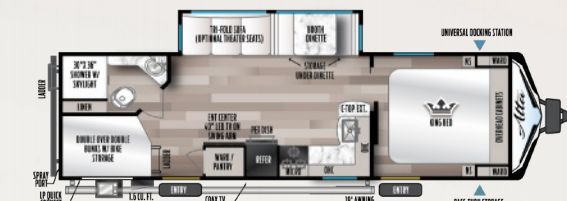
2100 MBH



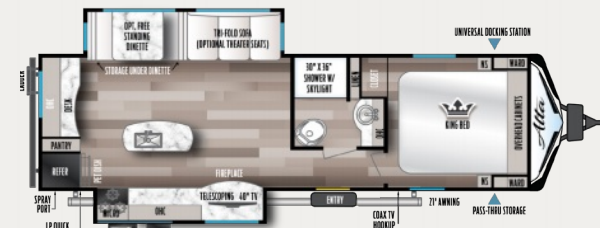
2350 KRK



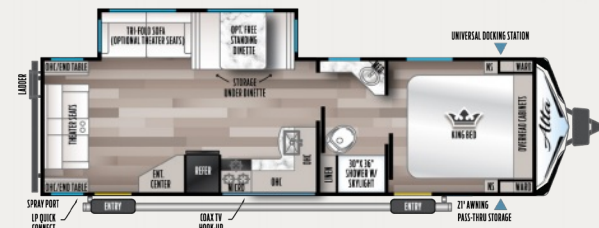
2600 KRB



2800 KBH



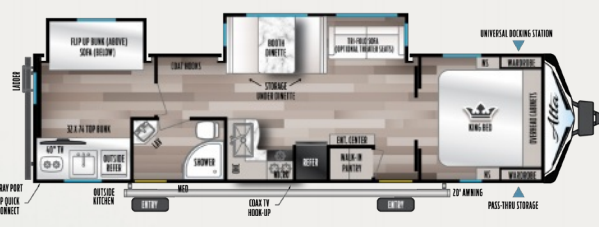
2810 KIK



2850 KRL



2900 KBH



3150 KBH

MODEL NUMBER	1900 MMK	2100 MBH	2350 KRK	2600 KRB	2800 KBH	2810 KIK	2850 KRL	2900 KBH	3150 KBH
HEIGHT	11' 2"	11' 2"	11' 2"	11' 2"	11' 2"	11' 2"	11' 2"	11' 2"	11' 2"
BOX LENGTH	18' 6"	21' 3"	24' 0"	25' 7"	29' 2"	29' 2"	29' 1"	29' 11"	33' 2"
LENGTH **	25'	28' 4"	28' 6"	30' 5"	33' 8"	33' 8"	33' 7"	33' 10"	37' 8"
UVW (LBS.) *	5463	5,326	5,906	6,161	6,812	7,228	6,851	TBD	7,911
HITCH (LBS.) *	610	735	680	660	784	797	778	TBD	891
CCC	2147	2,409	3,574	3,299	2,772	2,369	2,727	TBD	3,380
GVWR (LBS.) *	7610	7,735	9,480	9,460	9,584	9,597	9,578	TBD	11,291
TANKS (GAL.) FRESH, BLACK, GREY	48 30 30	48 30 60	53 30 60	53 30 60	53 30 60	53 30 60	53 30 60	53 30 60	53 30 60
TIRE SIZE	15"	15"	15"	15"	15"	15"	15"	15"	15"

\*\* PIN TO BUMPER / \* AVERAGE WEIGHTS

**OUR COMPANY TAKES PRIDE IN OUR FIVE GUIDING PRINCIPLES AND OUR CORPORATE PHILOSOPHY**  
 which focuses on people working together to create high quality, value-added products that deliver the ultimate RV experience.

**Sustainable Manufacturing**

An important objective to our strategy and operations is to implement economically sound manufacturing processes to reduce/ recycle waste & conserve energy and natural resources.

**Corporate & Social Responsibility**

We foster a business environment in which we focus on and practice:

- Ethical Labor Practices
- Teamwork
- Philanthropy
- Volunteering

**Culture & Values**

We are a forward thinking company committed to fostering a culture of teamwork. By being transparent, we encourage our employees to think outside the box and make a difference!

**Quality & Construction**

Our team takes pride in each unit we build. Our manufacturing standards and point to point inspections ensure each EAST TO WEST brand is built to the same quality specifications every time.

**Our Commitment**

We strive to provide the highest quality products at the best possible price to our customers. We invite you to be a part of the EAST TO WEST family and we look forward to exceeding your expectations!



**24/7 EMERGENCY  
 ROADSIDE ASSISTANCE  
 WITH VEHICLE PURCHASE\***

TOWING  
 JUMP-STARTS  
 TIRE CHANGES  
 FLUID DELIVERY  
 LOCKOUT  
 SERVICE

WINCH-OUT  
 MOBILE MECHANIC  
 TECHNICAL  
 SUPPORT  
 DEALER LOCATOR  
 SERVICES



\*VALID FOR 1 YEAR FROM DATE OF PURCHASE



**Learn More**  
 Scan this barcode using a QR Reader on your smart phone to learn more about Forest River.



A Berkshire Hathaway company.

3000 COUNTY ROAD 6 WEST ELKHART, IN 46514  
 WWW.EASTTOWESTRV.COM/ALTA 574.264.6664

**FREE MEMBERSHIP**  
 to Forest River Owners' Group

www.forestriverfrog.com



East To West RV



@easttowestr

**CUSTOMER SATISFACTION**



www.ForestRiverBuyLocal.com



**PRE-DELIVERY INSPECTION FACILITY**

20,000 square feet of quality assurance. The bare essentials for a premium product. This state-of-the-art facility gives immediate daily feedback to production for quality assurance in every unit built.

**SPECIFICATION DEFINITIONS**

**GVWR (Gross Vehicle Weight Rating)** - is the maximum permissible weight of the unit when fully loaded. It includes all weights, inclusive of all fluids, cargo, optional equipment and accessories. For safety and product performance do NOT exceed the GVWR.

**GAWR (Gross Axle Weight Rating)** - is the maximum permissible weight, including cargo, fluids, optional equipment and accessories that can be safely supported by a combination of all axles.

**UVW (Unloaded Vehicle Weight)\*** - is the typical weight of the unit as manufactured at the factory. It includes all weight at the unit's axle(s) and tongue or pin and LP Gas. The UVW does not include cargo, fresh potable water, additional optional equipment or dealer installed accessories.

\*Estimated average based on standard build optional equipment.

**CCC (Cargo Carrying Capacity)\*\*** - is the amount of weight available for fresh potable water, cargo, additional optional equipment and accessories. CCC is equal to GVWR minus UVW. Available CCC should accommodate fresh potable water (8.3 lbs per gallon). Before filling the fresh water tank, empty the black and gray tanks to provide for more cargo capacity.

\*\* Estimated average based on standard build optional equipment

Each Forest River RV is weighed at the manufacturing facility prior to shipping. A label identifying the unloaded vehicle weight of the actual unit and the cargo carrying capacity is applied to every Forest River RV prior to leaving our facilities.

The load capacity of your unit is designated by weight, not by volume, so you cannot necessarily use all available space when loading your unit.

YOUR *Alta* DEALER

All information contained in this brochure is believed to be accurate at the time of publication. However, during the model year, it may be necessary to make revisions and Forest River, Inc., reserves the right to make all such changes without notice, including prices, colors, materials, equipment and specifications as well as the addition of new models and the discontinuance of models shown in this brochure. Therefore, please consult with your Forest River dealer and confirm the existence of any materials, design or specifications that are material to your purchase decision. Litho. U.S.A. FOR 1876 P&N: 2021.0718