



Redhawk • Greyhawk • Greyhawk Prestige • Melbourne

Class C Motorhomes | 2018



HANDS DOWN, THE BEST RIDE.

**2**  
YEAR  
WARRANTY



## Our Wings Get You There

Family fun happens when you spread your wings. Thanks to Jayco's amenity-packed floorplans, rock-solid construction and two full camping seasons, or 24,000 miles, of warranty coverage, you can. Greater peace of mind and added comfort mean better memories and lasting bonds. So go ahead. Hit the road—and let the good times fly.

## Generations of Family Fun



### **Redhawk:** Page 4

Uncompromising construction and design make the reliable Redhawk one of the best values in its class



### **Greyhawk:** Page 6

An array of standard features and an unbeatable ride make traveling in the Greyhawk comfortable and, of course, fun



### **The All-New Greyhawk Prestige:** Page 6

The Greyhawk Prestige turns heads and adds to the adventure with its signature automotive-bonded panoramic front window



### **Melbourne:** Page 8

Fuel-conscious and agile, able-bodied and durable—the Melbourne is built ready for adventure after adventure





## TURN THE KEY AND GO

Jayco's Class C lineup, including the all-new Greyhawk Prestige, makes it easy to get away. Whether it's a spur-of-the-moment trip or one planned for weeks, these motorhomes are ready for fun adventures and comfortable travel.

## WE CARE ABOUT GETTING THERE AS MUCH AS BEING THERE

JRide® is a powerful blend of precise handling and renowned stability. Hands down, it's the best ride. **Experience JRide for yourself—visit your local dealer and take a test drive.**



A REDHAWK STANDARD



Redhawk:  
<https://www.jayco.com/products/class-c-motorhomes/2018-redhawk/jride/>



A GREYHAWK AND GREYHAWK PRESTIGE STANDARD



Greyhawk:  
<https://www.jayco.com/products/class-c-motorhomes/2018-greyhawk/jride-plus/>  
 Greyhawk Prestige:  
<https://www.jayco.com/products/class-c-motorhomes/2018-greyhawk-prestige/jride-plus/>



### HELLWIG® HELPER SPRINGS

Work with the chassis' existing springs to give the RV more support, improving stability under heavy loads

Available on: Redhawk, Greyhawk, Greyhawk Prestige



### STABILIZER BAR(S)

Reduces the body roll of a vehicle during fast cornering or over road irregularities

Available on: Redhawk, Greyhawk, Greyhawk Prestige



### RUBBER ISOLATION MOUNTS

Positioned near the tires to absorb road shock, dampen noise and minimize vibrations

Available on: Redhawk, Greyhawk, Greyhawk Prestige



### COMPUTER-BALANCED DRIVESHAFT

Ensures smooth and efficient power transfer to the wheels

Available on: Redhawk, Greyhawk, Greyhawk Prestige



### HEAVY-DUTY REAR STABILIZER BAR

A larger bar and polyurethane bushings, instead of rubber, transfer power faster for extra support, more stability and easier handling

Available on: Greyhawk, Greyhawk Prestige



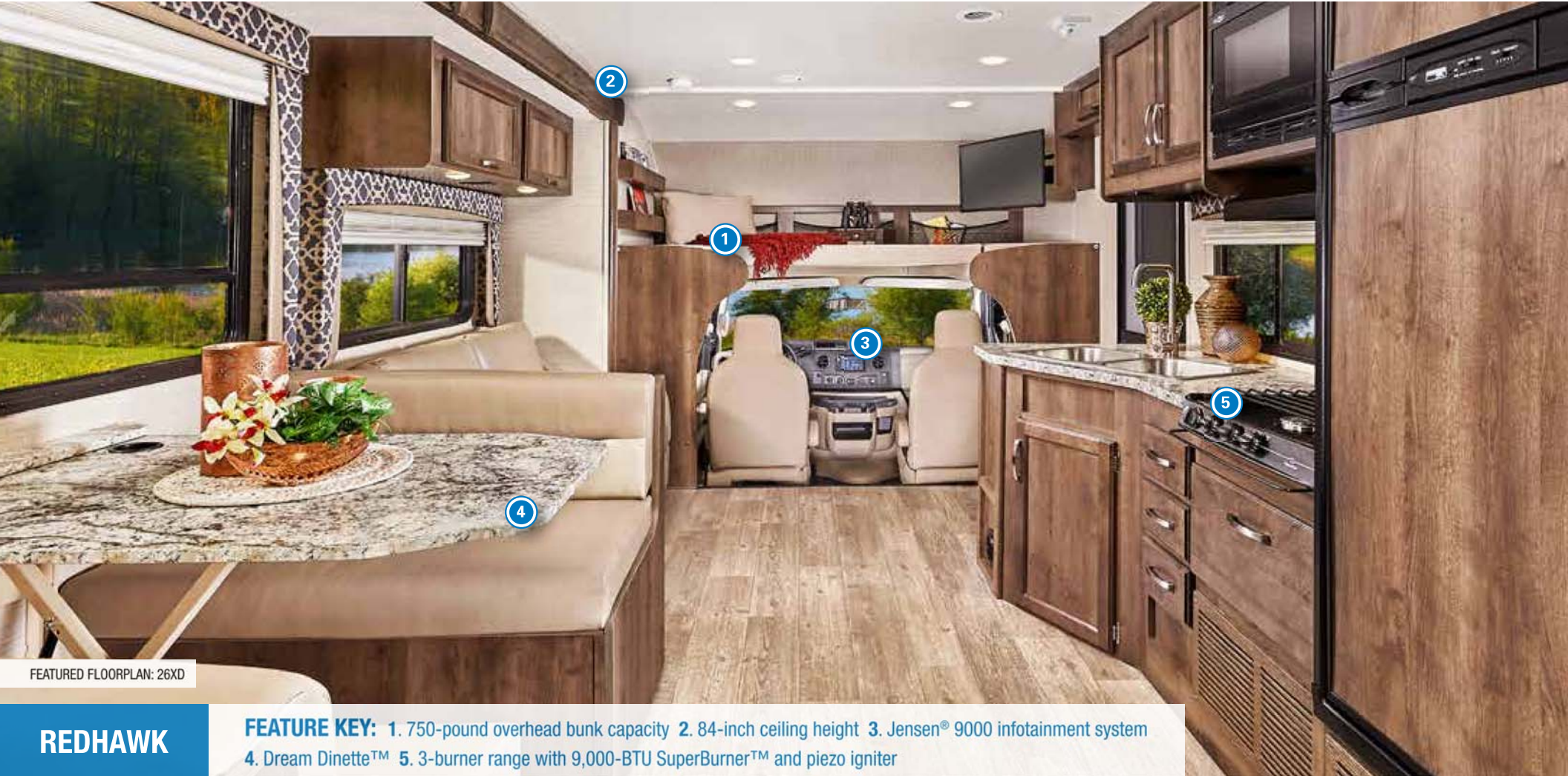
### BILSTEIN® SHOCK ABSORBERS

Feature a unique monotube gas-pressure design, providing optimum ride quality and vehicle control

Available on: Greyhawk, Greyhawk Prestige

\*Each model contains different JRide components. Visit [jayco.com](http://jayco.com) for more information. Not available on Melbourne.





FEATURED FLOORPLAN: 26XD

## REDHAWK

**FEATURE KEY:** 1. 750-pound overhead bunk capacity 2. 84-inch ceiling height 3. Jensen® 9000 infotainment system  
4. Dream Dinette™ 5. 3-burner range with 9,000-BTU SuperBurner™ and piezo igniter



GLASS TILE KITCHEN BACKSPLASH



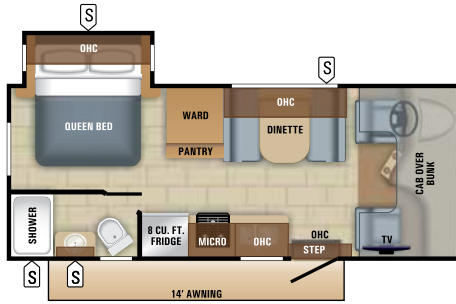
29KX BEDROOM



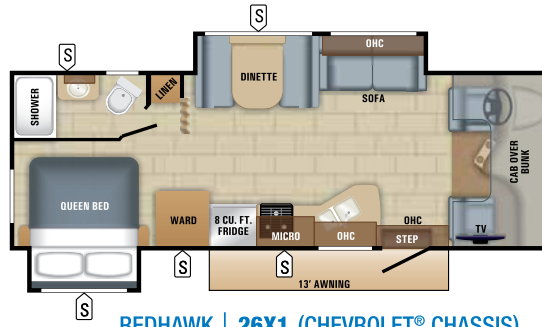
STAINLESS STEEL BATHROOM SINK



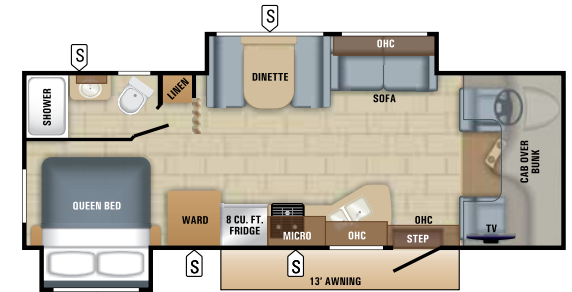
# REDHAWK FLOORPLANS



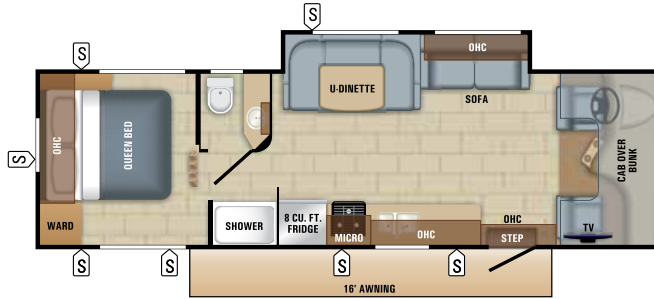
**REDHAWK | 22J (FORD® CHASSIS)**  
Sleeps: 4-6



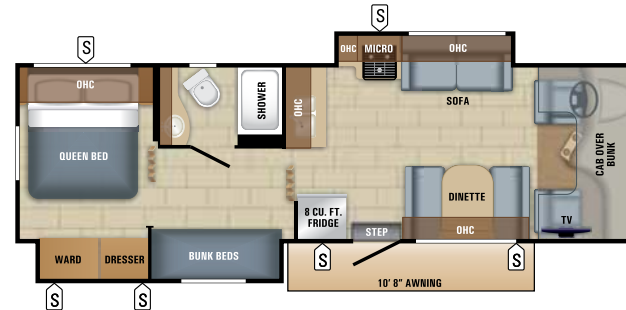
**REDHAWK | 26X1 (CHEVROLET® CHASSIS)**  
Sleeps: 5-7



**REDHAWK | 26XD (FORD CHASSIS)**  
Sleeps: 5-7



**REDHAWK | 29XK (FORD CHASSIS)**  
Sleeps: 6-7



**REDHAWK | 31XL (FORD CHASSIS)**  
Sleeps: 7-11

# REDHAWK SPECS

MODELS	DIMENSIONS					TANKS (GALS.)		
	FLOORPLAN	EXTERIOR LENGTH	EXTERIOR WIDTH	EXTERIOR HEIGHT (WITH A/C)	INTERIOR HEIGHT	WHEEL BASE	FRESH WATER CAPACITY (INCLUDES WATER HEATER)	GREY WASTE WATER CAPACITY
22J	24' 8"	100"	11' 6"	84"	158"	49.5	40	31
26X1	29' 2"	100"	11' 6"	84"	182"	53	41	32
26XD	28' 8"	100"	11' 6"	84"	181"	53	41	32
29XK	32' 6"	100"	11' 6"	84"	223"	49.5	41	32
31XL	32' 6"	100"	11' 6"	84"	223"	53	41	32

# REDHAWK INTERIOR DÉCOR

## ALBANY



## CHAMBRAY



## NANTUCKET



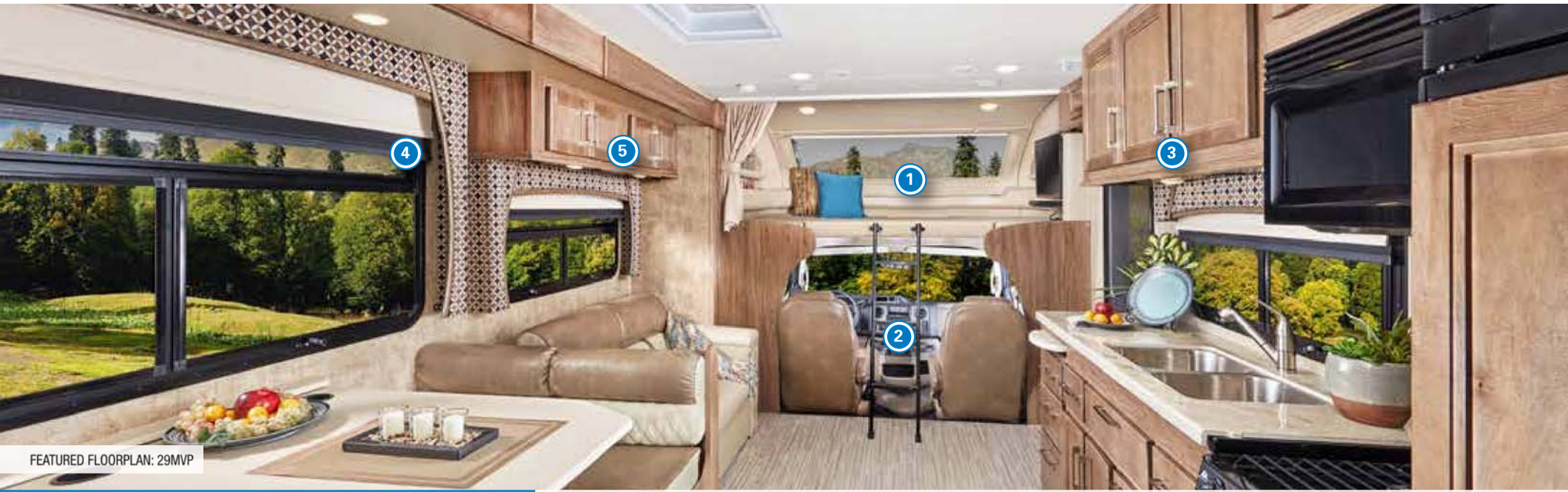




FEATURED FLOORPLAN: 29MV

## GREYHAWK

**FEATURE KEY:** 1. High-intensity, recessed LED ceiling lights 2. Tri-fold sofa (select models) 3. Pullout countertop extension 4. Queen-size bed with bedspread



FEATURED FLOORPLAN: 29MVP

## THE ALL-NEW GREYHAWK PRESTIGE

**FEATURE KEY:** 1. 82-inch x 30-inch panoramic front window 2. Jayco-exclusive Garmin® infotainment system powered by Fusion® 3. Sienna Maple cabinetry with shaker-style doors 4. Roller shades 5. Side-hinged, hidden-hinge overhead doors



## GREYHAWK FLOORPLANS



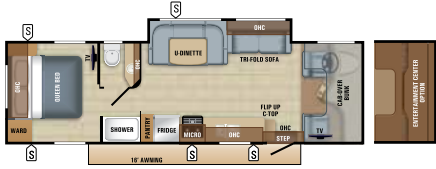
**GREYHAWK | 26Y**  
Sleeps: 5-8



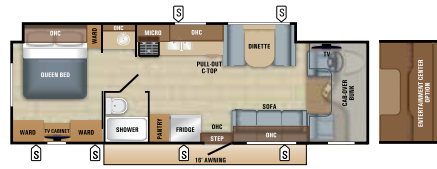
**GREYHAWK | 29ME**  
Sleeps: 5-8



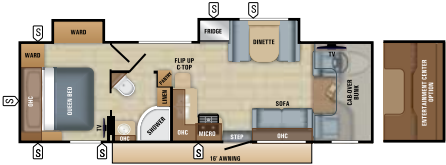
**GREYHAWK | 29MV**  
Sleeps: 5-8



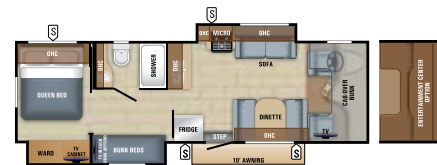
**GREYHAWK | 29W**  
Sleeps: 6-8



**GREYHAWK | 30X**  
Sleeps: 5-7



**GREYHAWK | 31DS**  
Sleeps: 5-7



**GREYHAWK | 31FS**  
Sleeps: 7-11

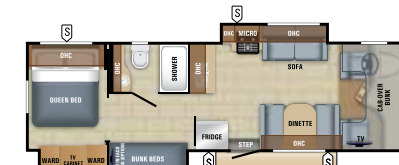
## GREYHAWK PRESTIGE FLOORPLANS



**GREYHAWK PRESTIGE | 29MVP**  
Sleeps: 5-8



**GREYHAWK PRESTIGE | 30XP**  
Sleeps: 5-7



**GREYHAWK PRESTIGE | 31FSP**  
Sleeps: 7-11

## GREYHAWK AND GREYHAWK PRESTIGE SPECS

MODELS		DIMENSIONS						TANKS (GALS.)		
MODEL	FLOORPLAN	EXTERIOR LENGTH	EXTERIOR WIDTH	EXTERIOR HEIGHT (WITH A/C)	INTERIOR HEIGHT	WHEEL BASE	FRESH WATER CAPACITY (INCLUDES WATER HEATER)	GREY WASTE WATER CAPACITY	BLACK WASTE WATER CAPACITY	
GREYHAWK	26Y	28' 8"	100"	11' 6"	84"	223"	53	41	32	
	29ME	32' 7"	100"	11' 6"	84"	223"	53	41	31	
	29MV	32' 7"	100"	11' 6"	84"	223"	53	41	32	
	29W	32' 6"	100"	11' 6"	84"	223"	49.5	41	32	
	30X	32' 6"	100"	11' 6"	84"	223"	53	41	31	
	31DS	32' 6"	100"	11' 6"	84"	223"	53	41	31	
GREYHAWK PRESTIGE	29MVP	32' 6"	100"	11' 6"	84"	223"	53	41	32	
	30XP	32' 6"	100"	11' 6"	84"	223"	53	41	31	
	31FSP		32' 6"	100"	11' 6"	84"	223"	53	41	32

## GREYHAWK INTERIOR DÉCOR\*

### CHIFFON



### REGAL

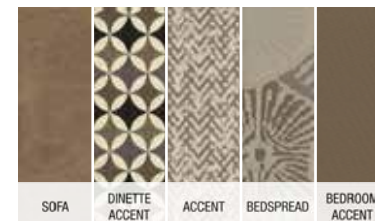


### SANDALWOOD

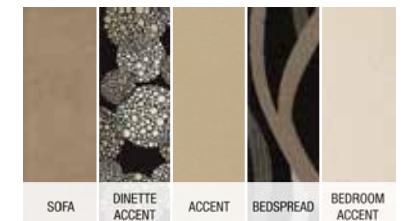


## GREYHAWK PRESTIGE INTERIOR DÉCOR\*\*

### BRINDLE



### UMBER



\*Décor are exclusive to Greyhawk

\*\*Décor are exclusive to Greyhawk Prestige





FEATURED FLOORPLAN: 24K

## MELBOURNE

**FEATURE KEY:** 1. 32-inch LED TV 2. Jayco-exclusive Garmin® infotainment system powered by Fusion® 3. Flip-up countertop extension  
 4. 83-inch tall, soft-touch vinyl ceiling 5. Residential-size microwave



24K PASS-THROUGH STORAGE WITH SLAM-LATCH™ AND LIGHT



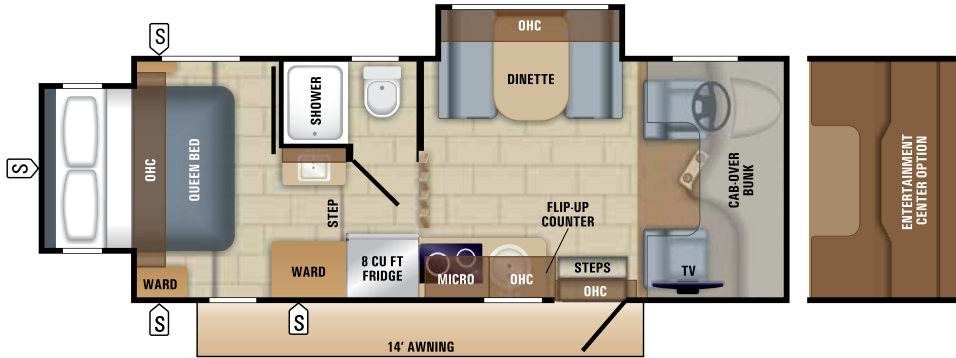
24K BEDROOM



ELECTRIC PATIO AWNING WITH LED LIGHTING

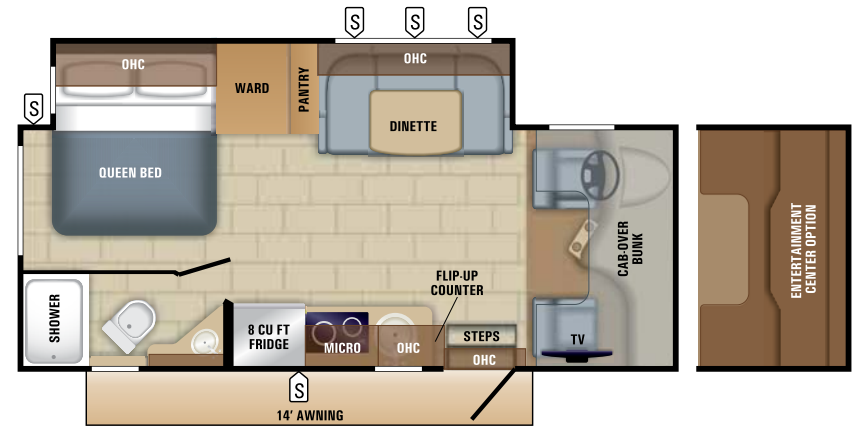


## MELBOURNE FLOORPLANS



### MELBOURNE | 24K

Sleeps: 4-6



### MELBOURNE | 24L

Sleeps: 5-6

## MELBOURNE SPECS

MODELS		DIMENSIONS				TANKS (GALS.)		
FLOORPLAN	EXTERIOR LENGTH	EXTERIOR WIDTH	EXTERIOR HEIGHT (WITH A/C)	INTERIOR HEIGHT	WHEEL BASE	FRESH WATER CAPACITY (INCLUDES WATER HEATER)	GREY WASTE WATER CAPACITY	BLACK WASTE WATER CAPACITY
24K	25' 2"	94"	11' 5"	83"	170"	49	32	32
24L	25' 2"	94"	11' 5"	83"	170"	49	32	32

**Gross Vehicle Weight Rating (GVWR):** The maximum permissible weight of the motorhome, including the Unloaded Vehicle Weight (UVW) plus passengers, personal items, all cargo, fluids, options and dealer-installed accessories. The GVWR is equal to or greater than the sum of the UVW and the Cargo Carrying Capacity.

**Gross Combined Weight Rating (GCWR):** The maximum allowable combined weight of the motorhome used as a tow vehicle and the attached towed vehicle. It is important for your safety and enjoyment that you are aware of the weights and tow ratings of the RV you select. Consult a competent advisor for questions or advice.

Whether you are new to RVing or a veteran, get a feel for the performance of your RV before heading out on the roadways. When you tow a vehicle with your RV, you must drive differently than when you drive a single vehicle. Practice hooking up, driving, backing up and braking in a safe environment or seek out professional instruction. Jayco affixes a weight label to each RV which lists weight information for that vehicle. Refer to that label to verify the vehicle will meet your requirements.

## MELBOURNE INTERIOR DÉCOR

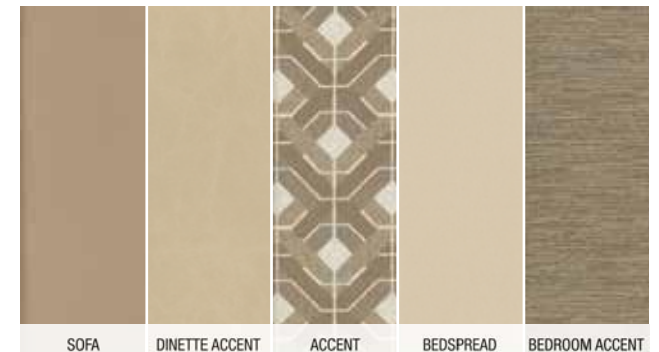
### CHIFFON



### REGAL



### SANDALWOOD





## STANDARDS AND OPTIONS

### REDHAWK\*

#### CUSTOMER VALUE PACKAGE

JRide® Package: Computer-balanced driveshaft, standard front and rear stabilizer bars, Hellwig® helper springs, rubber isolation mounts  
1,000-watt inverter  
Backup camera  
12V electric patio awning  
32-inch LED TV  
Jensen® 9000 infotainment system  
Heated holding tanks (12V pads)  
One-piece seamless front cap  
Black holding tank sprayer  
8-cubic-foot refrigerator

#### STANDARD EXTERIOR EQUIPMENT

Vacuum-bonded, laminated roof, floor and sidewalls  
Bead-foam insulation (R-15 max roof, R-9 max floor, R-5 max walls)  
Aluminum running boards  
Fiberglass, radius-cornered entrance door with screen door  
Electric-powered entrance step  
Pass-through storage compartment with light (select models)  
Onan® 4,000-watt MicroQuiet™ generator  
42-pound propane tank  
30-amp power cord  
Roof ladder  
Leveling jack prep  
120V GFCI-protected exterior receptacle  
12V electrical system with 120V, 60-amp power converter  
Slideout battery tray  
Outside shower  
4-inch bumper-tube sewer hose storage  
Frameless windows

#### STANDARD INTERIOR EQUIPMENT

84-inch ceiling height  
3-burner range with 9,000-BTU SuperBurner™ and piezo igniter  
6-gallon gas/electric DSI auto-ignition water heater  
Convection microwave oven (n/a in 31XL)  
Water filtration system  
Dream Dinette™ mechanism, easily raises and lowers dinette tabletop (n/a in 29XK)  
Lap safety belts in all seating areas  
Interior command center

15,000-BTU ducted air conditioner  
31,000-BTU furnace with wall thermostat with auto-ignition  
ABS shower with decorative surround  
Toilet with foot flush  
Queen-size bed with bedspread  
Full cab-over bunk with headboard (750-pound rating)  
Bunk beds (300-pound rating) (31XL)  
Under-bed storage  
Large wardrobes  
Removable clothing rod in shower  
Skylight in shower  
Cable TV hookup with RG-6 coax  
Digital antenna with signal booster  
Linoleum flooring  
12V demand water pump  
Ball-bearing drawer guides

#### STANDARD DRIVING EQUIPMENT

Ford® E-450 chassis (n/a on 26X1)  
Triton® 6.8L EFI V-10 305 HP engine with 420 lb.-ft. torque  
6-speed automatic TorqShift® series transmission with overdrive  
14,500-pound GVWR  
22,000-pound GCWR  
7,500-pound hitch with 7-pin plug  
Chevrolet® 4500 chassis (26X1)  
6L Vortec® V8 342 HP engine with 373 lb.-ft. torque  
Hydra-Matic 6-speed automatic transmission with overdrive  
14,200-pound GVWR  
20,000-pound GCWR  
5,000-pound hitch with 7-pin plug  
55-gallon fuel tank  
Driver and passenger air bags  
Power anti-lock brakes with power steering  
A/C and cruise control  
Third brake light  
Remote-controlled sideview mirrors  
Power windows and door locks  
Tilt steering wheel  
Auxiliary start switch  
120-amp alternator

#### OPTIONS

Automatic hydraulic leveling jacks

### GREYHAWK\*

#### CUSTOMER VALUE PACKAGE

JRide Plus Package: Computer-balanced driveshaft, heavy-duty rear stabilizer bar, standard front stabilizer bar, Bilstein® shocks, Hellwig helper springs, rubber isolation mounts  
24-inch LED TV in bedroom  
1,000-watt inverter  
Automatic hydraulic leveling jacks  
Backup and sideview cameras  
12V electric awning with LED lights  
Frameless windows  
Jayco-exclusive Garmin® infotainment system powered by Fusion®  
Remote-controlled, heated sideview mirrors  
15,000-BTU A/C with heat pump

#### STANDARD EXTERIOR EQUIPMENT

TuffShell™ vacuum-bonded, laminated floor, sidewalls and roof  
Bead-foam insulation (R-24 max roof, R-9 max floor, R-5 max walls)  
Fiberglass running boards and transition wings  
Fiberglass, radius-cornered entrance door with large window  
Electric-powered entrance step  
Pass-through storage compartment with Slam-latch™ and light (select models)  
Onan 4,000-watt MicroQuiet generator with auto-changeover  
56-pound propane tank  
30-amp power cord  
Roof ladder (n/a on 29ME)  
120V GFCI-protected exterior receptacle  
12V electrical system with 120V, 60-amp power converter  
Slideout battery tray with house battery  
Outside shower  
4-inch bumper-tube with sewer hose storage  
One-piece seamless front cap  
One-piece fiberglass roof  
White fiberglass exterior with vinyl graphics  
Keyless entry door, touchpad lock system  
High-output, marine-grade exterior speakers (2)  
Locking exterior storage compartments  
Illuminated battery disconnect switch  
Heated holding tanks (12V pads)  
Remote keyless entry  
6-gallon gas/electric water heater  
Black tank sprayer

#### STANDARD INTERIOR EQUIPMENT

Skylight in living room with shade  
High-intensity, recessed LED ceiling lights  
3-burner range with 9,000-BTU SuperBurner and piezo igniter  
Oven  
Residential microwave oven  
Water filtration system  
Dream Dinette mechanism, raises and lowers dinette tabletop (n/a in 29W)  
Lap safety belts in all seating areas  
Tri-fold sofa (26Y, 29ME, 29MV, 29W)  
Interior command center  
31,000-BTU auto-ignition furnace with wall thermostat  
32-inch digital LED HDTV  
ABS shower with one-piece, decorative surround  
Queen-size bed with bedspread  
Full 750-pound overhead bunk capacity  
Bunk beds (300-pound rating) (31FS)  
Skylight in shower  
Cable TV hookup with RG-6 coax  
Digital antenna with signal meter and powered amplifier

#### STANDARD DRIVING EQUIPMENT

Ford E-450 chassis  
Triton 6.8L EFI V-10 305 HP engine with 420 lb.-ft. torque  
6-speed TorqShift series transmission with overdrive  
14,500-pound GVWR  
22,000-pound GCWR  
7,500-pound hitch with 750-pound tongue capacity and 7-pin plug  
55-gallon fuel tank  
Driver and passenger air bags  
Power anti-lock brakes with power steering  
A/C and cruise control  
Third brake light  
Wheel liners

#### OPTIONS

Premium Paint Options: Autumn Air and Summer Bliss  
Aluminum rims  
Front entertainment center with 39-inch LED HDTV  
24-inch LED TVs in bunk area with CD/DVD players (2) (31FS)  
12-cubic-foot refrigerator (29MV, 29W, 30X)  
11,000-BTU A/Cs (2) (n/a on 26Y)

## GREYHAWK EXTERIOR SELECTIONS\*\*\*



Aztec Silver Graphics



Premium Paint Option - Autumn Air



Premium Paint Option - Summer Bliss

## GREYHAWK PRESTIGE EXTERIOR SELECTIONS\*\*\*\*



Aztec Silver Graphics



Premium Paint Option - Desert Gold



Premium Paint Option - Celestial Blue



## GREYHAWK PRESTIGE\*

### CUSTOMER VALUE PACKAGE

JRide Plus Package: Computer-balanced driveshaft, heavy-duty rear stabilizer bar, standard front stabilizer bar, Bilstein shocks, Hellwig helper springs, rubber isolation mounts

24-inch LED TV in bedroom

1,000-watt inverter

Automatic hydraulic leveling jacks

Backup and sideview cameras

Electric awning with LED lights

Exterior 32-inch LED TV

Frameless windows

Hidden-hinge cabinetry

Jayco-exclusive Garmin infotainment system powered by Fusion

Chrome, remote-controlled and heated mirrors

Solid-surface kitchen countertops with sink covers

### STANDARD EXTERIOR EQUIPMENT

TuffShell vacuum-bonded, laminated floor, sidewalls and roof

Bead-foam insulation (R-24 max roof, R-9 max floor, R-5 max walls)

Electric-powered entrance step

Onan 4,000-watt MicroQuiet generator with auto-changeover

56-pound propane tank

120V GFCI-protected exterior receptacle

12V electrical system with 120V, 60-amp power converter

Slideout battery tray with house battery

Outside shower

One-piece seamless front cap with 82-inch x 30-inch automotive-bonded panoramic front window

One-piece fiberglass roof

White fiberglass exterior with vinyl graphics

Keyless entry door, touchpad lock system

High-output, marine-grade exterior speakers

Locking exterior storage compartments

Illuminated battery disconnect switch

Heated holding tanks (12V pads)

32-inch exterior TV

LED taillights

### STANDARD INTERIOR EQUIPMENT

High-intensity, recessed LED ceiling lights

3-burner range with 9,000-BTU SuperBurner recessed with solid-surface covers

6-gallon gas/electric DSI auto-ignition water heater

Sienna Maple cabinetry with shaker-style doors

Side-hinged overhead doors

Satin nickel hardware

Hardwood fascia

Oven

Water filtration system

Dream Dinette mechanism, raises and lowers dinette tabletop

Interior command center

15,000-BTU A/C with heat pump

31,000-BTU auto-ignition furnace with wall thermostat

32-inch LED TV

Roller shades

Shower with decorative surround

Queen-size bed with bedspread

Full 750-pound overhead bunk capacity

Stainless steel sink in kitchen and bathroom

24-inch LED TV in bedroom

### STANDARD DRIVING EQUIPMENT

Ford E-450 chassis

Triton 6.8L EFI V-10 350 HP engine with 420 lb.-ft. torque

6-speed automatic TorqShift series transmission with overdrive

14,500-pound GVWR

22,000-pound GCWR

7,500-pound hitch with 750-pound tongue capacity and 7-pin plug

55-gallon fuel tank

Driver and passenger air bags

Power anti-lock brakes with power steering

A/C and cruise control

Third brake light

Wheel liners

### OPTIONS

Aluminum rims

24-inch LED TVs in bunk area with CD/DVD players (2) (31FSP)

12-cubic-foot refrigerator (29MVP, 30XP)

Premium Paint Options: Celestial Blue or Desert Gold (with slide topper awnings)

11,000 BTU A/Cs (2)

## MELBOURNE\*\*

### CUSTOMER VALUE PACKAGE

Jayco-exclusive Garmin infotainment system powered by Fusion

Electric stabilizer jacks

Backup camera

Electric patio awning with LED light strip

Frameless windows

Remote-controlled and heated mirrors

Swivel driver and passenger seats

Heated holding tanks (12V pads)

Keyless cab entry

### STANDARD EXTERIOR EQUIPMENT

Soft Sand vinyl exterior graphics

White baggage doors with Slam-latch

One-piece seamless front cap

Electric-powered, single-entrance step

Full pass-through storage compartment (24K)

30-amp detachable electrical service cord

110V GFI exterior receptacles

60-amp 12V converter

12V house battery with slideout battery tray

Outside shower

Black tank sprayer

12V demand water pump

13,500-BTU A/C

Exterior grill quick-connect

### STANDARD INTERIOR EQUIPMENT

83-inch interior ceiling height with soft-touch vinyl ceiling

High-intensity LED ceiling lights

6-gallon gas/electric water heater

Water filtration system

Lap safety belts in all seating areas

Auto-ignition 30,000-BTU ducted furnace

32-inch LED living room TV

Plastic toilet with hand sprayer

Queen-size bed with bedspread

Mattress bunk mats (300-pound rating)

Shower skylight

Prep for satellite dish

Digital antenna with signal booster

8-cubic-foot gas/electric refrigerator

Water heater bypass

Flip-up countertop extension

Kitchen faucet with pullout sprayer

Dream Dinette with booth dinettes (select models)

U-shaped dinette with stow-away pedestal legs (select models)

12V USB charging station in dinette area only

### STANDARD DRIVING EQUIPMENT

Mercedes 3500 170-inch wheelbase, 11,030-pound GWR chassis

V6 turbo 188 HP diesel engine with electronic fuel injection and 325 lb.-ft. torque

5-speed automatic transmission

220-amp alternator

7-pin trailer hitch plug

9.8-gallon propane tank

5,000-pound rear hitch receiver with dual connector

Flush-mount LED marker lights

Front and rear disc, 4-wheel anti-lock brakes

Third brake light

12V chassis battery

Backup/reverse lights

### OPTIONS

Front entertainment center with 32-inch LED TV

Premium Paint Options with Diamond Shield™ and aluminum rims: Tattoo Blue and White Lightning

3.2kW Onan diesel generator

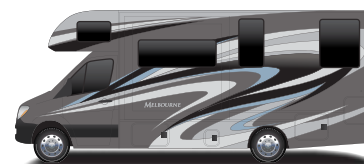
\*For a full list of standards and options, visit [jayco.com/products/class-c-motorhomes/](http://jayco.com/products/class-c-motorhomes/)

\*\*Chassis warranty is 36 months/3 years. Diesel engine is 5 years/100,000 miles. All above standards and options are based on the initial prototype. Jayco reserves the right to make any changes without notification.

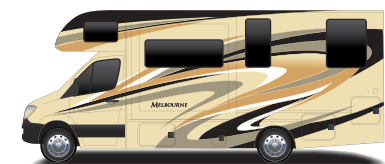
## MELBOURNE EXTERIOR SELECTIONS



Soft Sand



Premium Paint Option - Tattoo Blue



Premium Paint Option - White Lightning





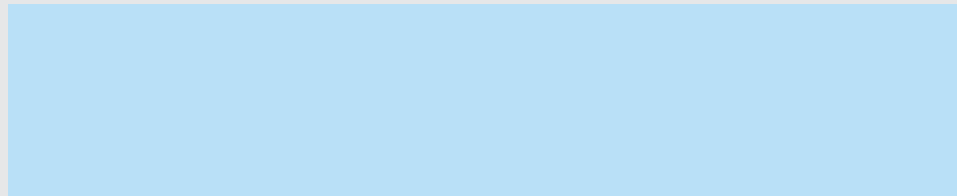
## THE JAYCO DIFFERENCE

1. **One-piece seamless front cap** for increased durability and protection
2. **82-inch x 30-inch automotive-bonded panoramic front window** (Greyhawk Prestige only)
3. **750-pound overhead bunk capacity** offers nearly 250 pounds more than the industry average for greater safety and peace of mind
4. **Integrated electric step** maximizes ground clearance and floor space

5. **Integrated third brake light** improves safety on the road
6. **Lap safety belts** in all living area seats
7. **Frameless windows** make exterior maintenance easier than ever and give the unit a sleek, modern look
8. **Full pass-through storage** for easy packing and unpacking (select models)



## Meet your Jayco Dealer



We work hard—so you can play hard. From finding the perfect Jayco for your family to providing flexible financing options and full-service support, we're here to help.

## Follow Jayco



**Jayco, Inc.** | P.O. Box 460 | Middlebury, IN 46540 © **RVIA** See dealer for further information and prices. All information in this brochure and on [www.jayco.com](http://www.jayco.com) is the latest available at the time of publication approval. Jayco reserves the right to make changes and to discontinue models without notice or obligation. Photography may show optional equipment or props used for decoration purposes only. RVs built for sale in Canada may differ to conform to Canadian codes. JAYCO and the JAYCO BIRD IN FLIGHT are registered trademarks of Jayco, Inc. Printed in USA 55K 05/17 ©2017 Jayco, Inc. 274783

## Travel with Confidence



At Jayco, we build our RVs to handle every adventure, then back them with our industry-leading 2-year limited warranty. We, with support from our select partners, have you covered for **2 camping seasons** or **twenty-four thousand (24,000) miles** (mileage limitation applies to motorized products only), whichever occurs first, from the original date of purchase. You won't find a better warranty in the business, because the only strings we attach are those that deliver the ultimate in reliability. That's the Jayco difference. So go explore. We have the warranty that will follow you anywhere. For a copy of our 2-year limited warranty with complete terms and conditions, please contact your local Jayco dealer.



A year's access to Coach-Net™—the country's largest RV emergency road service.



**Jayco's long-term commitment to generations of family fun**

After six years of increased efforts to eliminate waste, conserve energy and increase recycling, we've come a long way in building RVs that are not only better for your family—but also better for the planet.

Learn more at [Jayco.com/EcoAdvantage](http://Jayco.com/EcoAdvantage)