

FR3
BY FOREST RIVER



Class C Floorplans, Class A Styling





5 FLOORPLANS



Crossover Motorhome

Class C Floorplans

Class C Features

Class C Price Point

Class A Styling

including exclusive ALL-NEW FR3 lighted logo
windshield and LED Strip Lighting

30 DS

Specifications

	25DS	28DS	29DS	30DS	32DS
Chassis	Ford	Ford	Ford	Ford	Ford
Engine	V-10	V-10	V-10	V-10	V-10
Horsepower	320 HP	320 HP	320 HP	320 HP	320 HP
Torque	460 ft-lbs	460 ft-lbs	460 ft-lbs	460 ft-lbs	460 ft-lbs
Wheelbase	158"	190"	190"	190"	228"
Fuel Tank	80 gal	80 gal	80 gal	80 gal	80 gal
GVWR	16,000 lbs	18,000 lbs	18,000 lbs	18,000 lbs	20,500 lbs
GCWR	23,000 lbs	23,000 lbs	23,000 lbs	23,000 lbs	26,000 lbs
GAWR Front	6,500 lbs	7,000 lbs	7,000 lbs	7,000 lbs	7,500 lbs
GAWR Rear	11,000 lbs	12,000 lbs	12,000 lbs	12,000 lbs	13,500 lbs
Exterior Storage	75 cu ft	82 cu ft	115 cu ft	112 cu ft	118 cu ft
Safety Belts	6	6	6	8	8
LP Tank	24.5 gal	24.5 gal	24.5 gal	24.5 gal	24.5 gal
Fresh Water	57 gal	57 gal	57 gal	57 gal	57 gal
Grey Tank	41 gal	41 gal	41 gal	41 gal	41 gal
Black Tank	41 gal	41 gal	41 gal	41 gal	41 gal
Length	26' 7"	29' 8"	30' 9"	31' 8"	33' 11"
Exterior Width	99.5"	99.5"	99.5"	99.5"	99.5"
Exterior Height	12' 2"	12' 2"	12' 2"	12' 2"	12' 2"
Interior Width	95.5"	95.5"	95.5"	95.5"	95.5"
Interior Height	82"	82"	82"	82"	82"
Awning Length	12'	16'	19'	16'	12'

28 DS



GVWR (Gross Vehicle Weight Rating) is the maximum permissible weight of the unit when fully loaded. It includes all weights, inclusive of all fluids, occupants, cargo, optional equipment and accessories. For safety and product performance do NOT exceed the GVWR.

GCWR (Gross Combined Weight Rating) is the maximum permissible loaded weight of your motor home and any towed trailer or towed vehicle. Actual GCWR of this vehicle may be limited by the sum of the GVWR and the installed hitch receiver maximum capacity rating; see hitch rating label for detail.

GAWR (Gross Axle Weight Rating) is the maximum permissible weight, including cargo, fluids, optional equipment and accessories that can be safely supported by each axle.

UVW (Unloaded Vehicle Weight)** is the typical weight of the unit as manufactured at the factory. It includes all weight at the unit's axle(s), including full fuel, all fluids and LP Gas. The UVW does not include cargo, fresh potable water, additional optional equipment or dealer installed accessories.

*Estimated Average based on standard build optional equipment.

CCC (Cargo Carrying Capacity)** is the amount of weight available for fresh potable water, cargo, passengers, additional optional equipment and accessories. CCC is equal to GVWR minus UVW. Available CCC should accommodate fresh potable water (8.3 lbs per gallon). Before filling the fresh water tank, empty the black and gray tanks to provide for more cargo capacity.

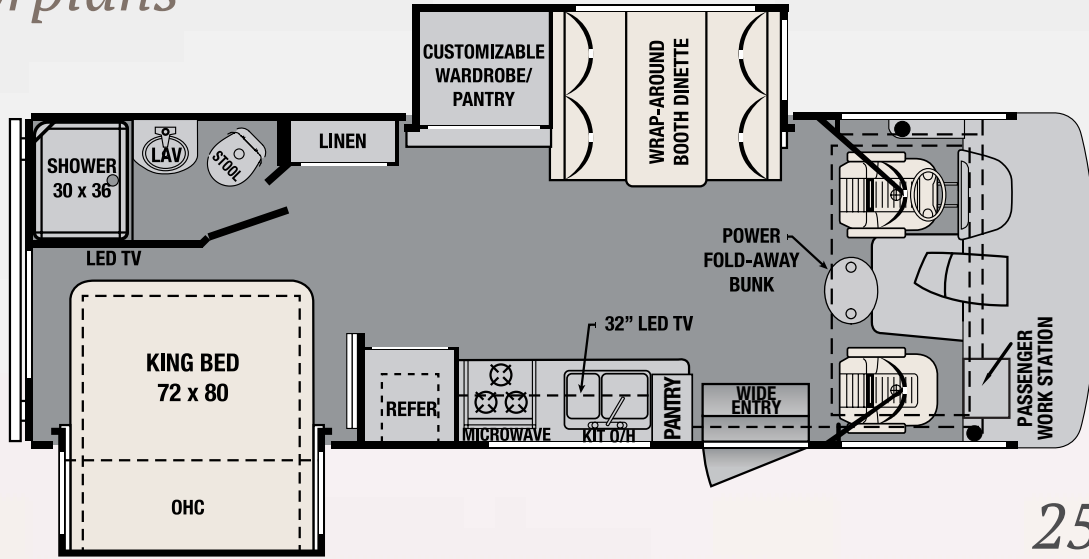
** Estimated average based on standard build optional equipment.

Each Forest River RV is weighed at the manufacturing facility prior to shipping. A label identifying the unloaded vehicle weight of the actual unit and the cargo carrying capacity is applied to every Forest River RV prior to leaving our facilities.

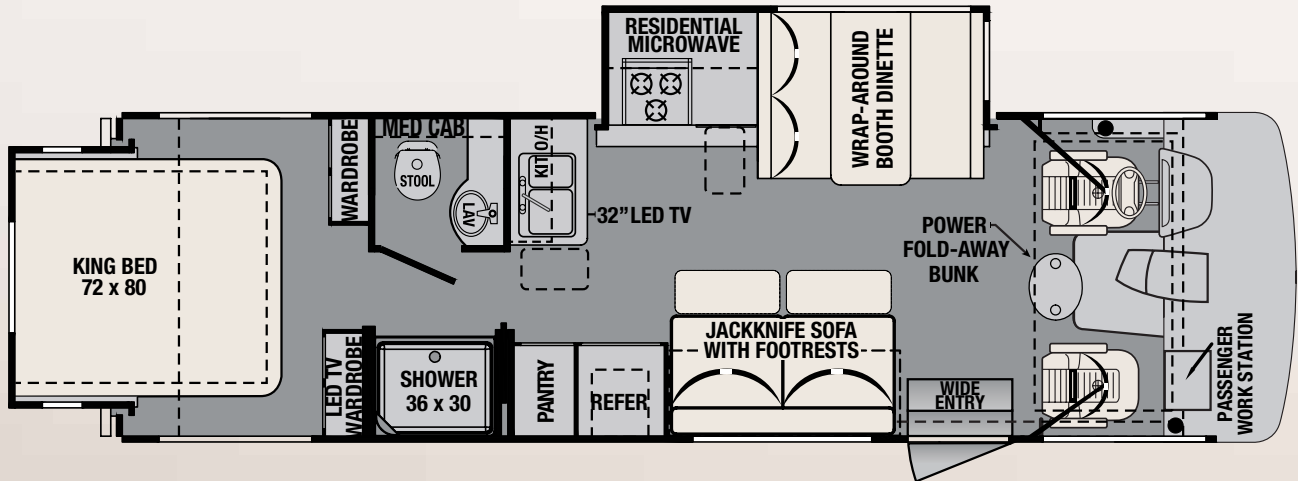
The load capacity of your unit is designated by weight, not by volume, so you cannot necessarily use all available space when loading your unit.

Actual towing capacity is dependent upon your particular loading and towing circumstances, which includes the GVWR, GAWR and GCWR as well as adequate trailer brakes. Please refer to the Operator's Manual of your vehicle for further towing information.

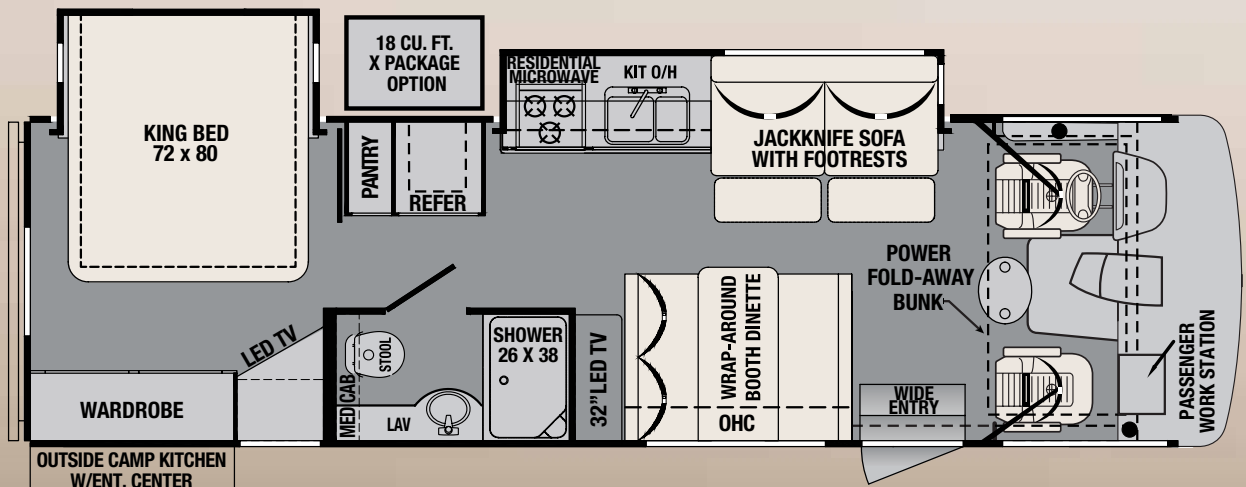
Floorplans



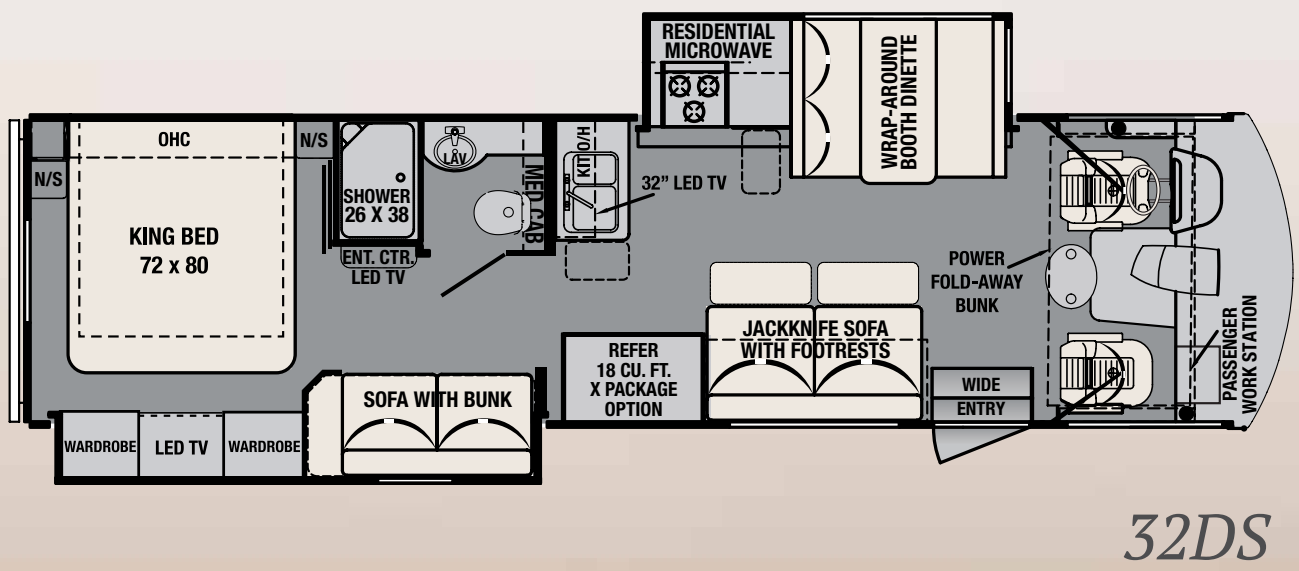
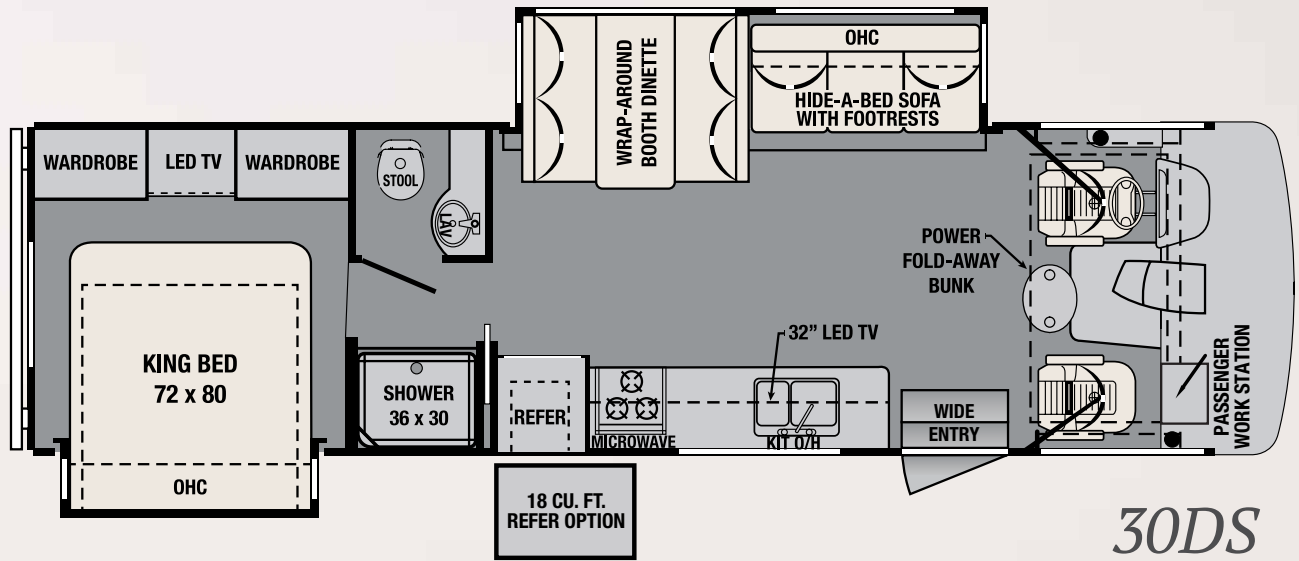
25DS



28DS



29DS



28 DS shown with Carmel interior



30 DS shown with Mocha interior



Styling Appointments

FR3's crossover styling offers even more room for your sleepy guests by offering deep slideout rooms, a deep wrap-around booth dinette (converts into a comfort lounge) and sofas that are all equipped with integrated footrests [A1, A2]. A power front bunk is hidden against the ceiling above the driver/passenger seats. With the push of a button, you can convert your Class A motorhome into the styling of a Class C motorhome up front [B].

The ergonomic cockpit cab area [B] features both a power front sun visor and manual pull-down side shades for extra privacy and comfort. The molded automotive style dash has an integrated side and rear vision backup camera display for enhanced safety. A pull-out laptop station with a 110v outlet for power is available at the passenger's seat.

"Super Storage" exterior cargo compartment at the rear of every FR3 model provides cavernous molded storage bins for your belongings [C].

The exterior plumbing bay is equipped with an outside shower, compartment light, black tank flush and enclosed water hook ups. Forest River, Inc.'s Arctic Package is standard on the FR3 for cold weather camping [D].



Features, Standards & Options

Construction & Exterior

- Grey Gel-Coat Sidewalls with Graphics
- One-Piece Fiberglass Front Cap
- Bi Hi/Lo Headlights
- LED Turn Signals
- Side-swing Front Grill w/Mesh Bug Shield
- Lower Fog Lights with LED Accents
- Color Back-Up & Side Cameras
- "SUPER STORAGE" Rear Cargo Compartment
- Rotocast Storage Boxes with Drains
- Radius Alpha SuperFlex Roof (Grey)
- Roof Ladder
- Power Patio Awning w/LED Light Strip
- Slide Room Topper Awnings
- Rubber Tread Entry Steps
- Outside Shower
- Power Entry Step
- Rubberized Entry Assist Handle
- Vacuum Bonded Construction
- Front Steel Cage
- 4 Point Hydraulic Leveling Jacks
- Camp Kitchen w/32" TV, Sound Bar, HD Cooler and LP Grill
- Outside Entertainment Center w/TV and Marine-Grade Speakers

Chassis & Cockpit

- Molded ABS Automotive Dash w/Laptop Console and 110V Outlet
- Power Front Sun Shade (Windshield)
- Ultra Leather Driver/Passenger Seating w/Double Stitching
- Vinyl-Wrapped Low Profile Cockpit Engine Cover
- Pioneer Dash Entertainment System with AM/FM/DVD/Bluetooth/Backup Color Monitor/USB and Sound Selector (Mirror Link Navigation Available with Most Smart Phones)
- 5,000 lb. Tow Hitch w/ 7-Way Plug
- Automotive Style Bonded One Piece Windshield w/Backlit Logo
- Power Heated Exterior Mirrors
- 245/70R19.5 G670 Goodyear RV Tires with Valve Stem Extender
- Map Lights
- Driver Diamond Plate Floor Mat

Interior

- Assist Handle Eases Entry Into Unit
- Power Front Fold-Away Overhead Bunk w/Ladder
- 32" Side-Swing LED TV
- KING Jack™ Digital TV Antenna w/Mount & Built-in Signal Meter
- RADIUS Interior Ceiling
- Wide Wood Plank Residential Linoleum Flooring
- High Output Quiet Air Command™ Ducted Roof A/C with Chill Construction and Heat Pump
- Black Walnut Cabinetry
- Brushed Nickel Hardware & Plumbing Fixtures
- Ultra Leather Hide-A-Bed Sofa w/Dual Footrests (30DS only)
- Ultra Leather Jackknife Folding Sofa Bed w/Dual Footrests (28DS, 29DS, 32DS)

- Ultra Leather Wrap Around Dinette Booth w/Comfort Cushions
- Heavy Duty Full Extension Drawer Guides & Hardware Throughout
- Night Shade Window Treatments
- LED Lighting Throughout Unit

Galley

- Double Door 6 cu. ft. Gas/Electric Refrigerator
- 3-Burner Cook Top w/Oven and Flush Mount Stove Cover
- Pull-out Countertop Extension (28DS & 32DS only)
- Flip-up Countertop Extension (28DS & 32DS only)
- Microwave Oven
- Large Double Bowl Stainless Steel Sink & Fixture
- Laminate Countertops
- Large Coat/Broom/Storage Closet
- Kitchen Drawers with Full-Extension Drawer Guides
- Trash Can Storage Area Below Sink
- 12 Volt Hot Spot

Bedroom & Bathroom

- 72" x 80" King Bed w/Headboard
- Upgraded Hinged Mattress w/Memory Foam (25DS, 28DS, 29DS)
- Bedroom Wardrobe
- Toilet with Foot Flush
- Stainless Steel Lavatory Sink & Fixture
- Brushed Nickel Framed Glass Shower

Safety & Convenience

- Extra Wide Entry Door with Deadbolt Lock
- Forest River Command Center
- Smoke, LPG & Carbon Monoxide Detectors
- Fire Extinguisher

Electrical & Plumbing

- 4.0 KW Onan Gas Generator (N/A 32DS)
- Ducted Roof A/C with Chill Construction and Heat Pump
- 2 Deep Cycle House Batteries
- Battery Disconnect Switch
- Emergency Start Switch
- Shore Power Electrical Cord w/Storage Compartment
- 6 Gallon Gas/Electric Water Heater
- Arctic Pack System (Heated Holding Tanks)
- 35,000 BTU Furnace

Decor

- Mocha
- Carmel

Cabinetry

- Raised Panel Black Walnut

Options

- **X Package** (mandatory on 32DS) (N/A 25DS, 28DS)
- 50 Amp Service
- 5.5 KW Onan Gas Generator
- 2nd A/C
- 18 cu. ft. Gas/Electric Refrigerator

The FR3 crossover motorhome combines the best features, family friendly livability and affordability of an easy to drive Class C motorhome with the space, convenience and styling of a Class A motorhome.

The FR3 crossover motorhome offers flush floor construction for a smooth transition from the cockpit to the living area. Driver and passenger seats have the ability to become part of the entertainment rooms with an easy swivel. The carpet-free surface also provides a pet-friendly environment. Radius ceilings throughout the coach increase headroom for a more open, relaxed living space. Contemporary furnishings and deep sliderooms enhance the residential appeal. Upgraded LED interior lighting throughout extends the life of your battery substantially.

The media center provided in the dash includes an AM/FM/CD/DVD/Bluetooth/USB that can stream

music from a smart phone or bluetooth-capable device indoors or out. You can also mirror link the navigation from most smart phones directly to the dash media center. The kitchen includes a deep double bowl stainless steel sink, microwave, 3-burner cooktop and a large oven. Oversized dinette seating and windows offer an excellent view with side windows in the deep slideout for cross-ventilation.

The FR3 crossover motorhome features a well-lit bedroom with a large rear window for plenty of natural light and a reading light over the King-sized bed [72" x 80" residential bed].

REST LIKE ROYALTY IN A
King-sized bed.

28 DS





*Let the vacation begin
at your front door.*



Your FR3 Dealer

Forest River, Inc.
FR3 Division
58277 State Rd. 19 South
Elkhart, IN 46517
(574) 296.7700

www.forestriverinc.com/fr3



PRE-DELIVERY INSPECTION FACILITY

20,000 square feet of quality assurance. The bare essentials for a premium product. This state-of-the-art facility gives immediate daily feedback to production for quality assurance in every unit built.



Forest River, Inc. encourages our customers to purchase their Forest River products from a local dealership whenever possible for the following reasons:

- 1) Forest River, Inc. dealers are independently owned and operated businesses so priority service and scheduling is at their discretion and is often provided to customers that purchased their unit at that dealership.
- 2) Purchasing locally allows customers to establish meaningful relationships with a dealer, enhancing the RV experience through assistance with product questions, user tips or RV regulations for your state or country, and much more!
- 3) Canadian customers must meet requirements to bring an RV purchased out of the country to their home. These requirements may involve additional inspections and certifications, taxes and fees. Your local Canadian Dealer is a professional at meeting these requirements.
- 4) Scheduling timely warranty repairs and adjustments through a local dealership provides far greater flexibility and convenience to you, the customer!

It is the goal of Forest River, Inc. that all of our RV owners fully enjoy the RV experience and that customer satisfaction meets or exceeds their expectations!

FREE MEMBERSHIP
to Forest River Owners' Group



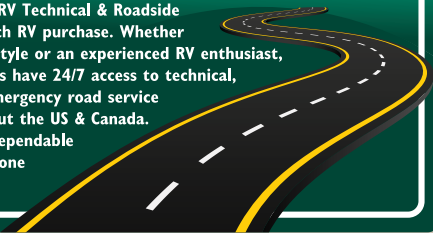
www.forestriverfrog.com

24/7 EMERGENCY ROADSIDE ASSISTANCE

For a worry-free ownership experience Forest River includes one

Coach-Net[®]
RV Technical & Roadside Assistance

year of Coach-Net RV Technical & Roadside Assistance with each RV purchase. Whether new to the RV lifestyle or an experienced RV enthusiast, Forest River owners have 24/7 access to technical, operational and emergency road service coverage throughout the US & Canada. Coach-Net's fast, dependable service is just a phone call away.



Learn More
Scan this barcode using a QR Reader on your smart phone to learn more about Forest River.



A Berkshire Hathaway company.

All information contained in this brochure is believed to be accurate at the time of publication. However, during the model year, it may be necessary to make revisions and Forest River, Inc., reserves the right to make all such changes without notice, including prices, colors, materials, equipment and specifications as well as the addition of new models and the discontinuance of models shown in this brochure. Therefore, please consult with your Forest River, Inc., dealer and confirm the existence of any materials, design or specifications that are material to your purchase decision. 05/16 20K

©2016 FR3
a Division of Forest River, Inc., a Berkshire Hathaway company. All Rights Reserved.