

Montana

FIFTH WHEELS

BUILT BY
EXPERIENCE





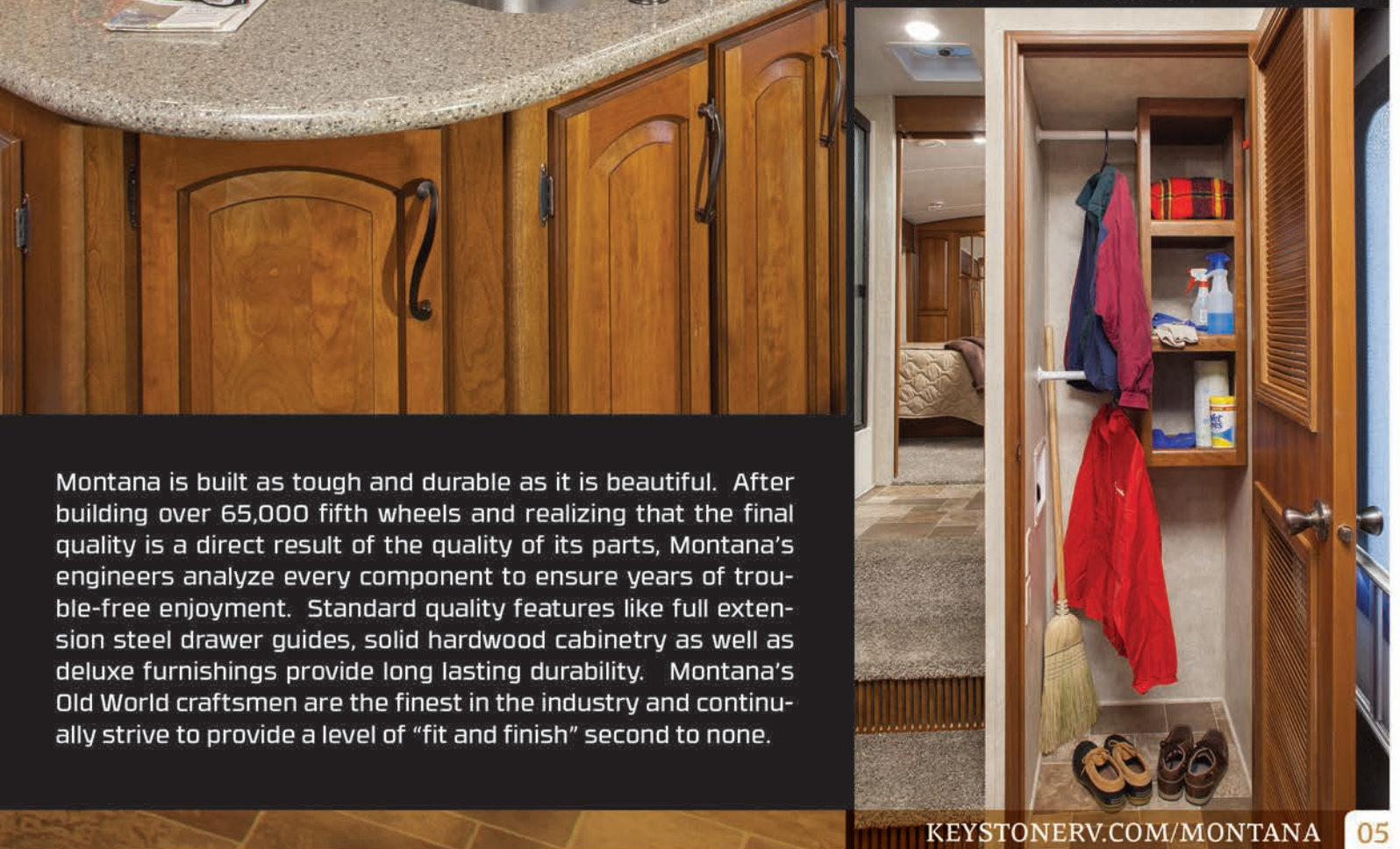
After 11 consecutive years as the best selling fifth wheel brand in America, Montana continues to provide unmatched quality, luxury and livability. Ten lavish models provide floor plan flexibility while the list of standard equipment and luxury enhancements seems endless. Look around and find yourself surrounded by the finer things such as recessed LED light fixtures, glazed cherry hardwood cabinets and plush residential carpeting with thick rebond padding. It's exactly what you should expect from the most recognized name in fifth wheels.





The Montana 3750 front living room offers unparalleled spaciousness with the innovative arched roof. Leading the way is opposing residential sofas, available in beautiful heavy grade fabric or optional leather. From here you can immerse yourself in the stunning clarity of the 46" high definition LCD television and home entertainment system with the theater quality 5.1 Dolby Digital surround sound. Montana brings you everything but the popcorn.





Montana is built as tough and durable as it is beautiful. After building over 65,000 fifth wheels and realizing that the final quality is a direct result of the quality of its parts, Montana's engineers analyze every component to ensure years of trouble-free enjoyment. Standard quality features like full extension steel drawer guides, solid hardwood cabinetry as well as deluxe furnishings provide long lasting durability. Montana's Old World craftsmen are the finest in the industry and continually strive to provide a level of "fit and finish" second to none.





If you have an appetite for residential quality features and ample storage, the Montana kitchen is made to order with details like Corian® countertops, flush mount range cover and dazzling backsplash. Amidst all the visual appeal, you will find the appliances you need to prepare your favorite meals, including a 30" over-the-range microwave/convection oven, 22" gas oven and three burner range top with an exterior vented range hood. Of course, the optional 4 door, 12 cubic foot refrigerator is available on most models.



3900FB ENTERTAINMENT CENTER



The new 3900FB is a floor plan that begs to be called home with opposing full wall slide-outs and a free standing kitchen island. The 40" high definition LCD television is mounted on a double swing arm for optimal viewing angles from the living area or kitchen, while the pull-out desk provides the perfect place to catch up on email or surf the web.



SHOWN WITH OPTIONAL LEATHER

3900FB IN MOCHA DECOR



3900FB MASTER BATHROOM



The new 3900FB features a half bathroom downstairs and an expansive master bathroom upstairs in front of the bedroom. The deep bedroom slide-out provides ample walk space at the foot of the bed while the arched roof provides up to 6' 8" interior ceiling height. Storage abounds throughout in the type of hand crafted wood cabinetry that makes Montana owners the envy of their peers. There's a nook, cranny or drawer for every item in your wardrobe, plus his and hers vanities for effortless organization. With a bathroom this smart and functional, life on the road is easy.





3725RL BEDROOM



When nothing sounds better than a relaxing evening at home, look no further than the Montana bedroom suites. The entertainment center offers front row thrills thanks to a 32" high definition LCD television directly across from the bed. The deep, cedar lined storage compartment under the bed will keep your linens fresh on the longest trips. Whether you prefer a queen or king sized bed, Montana has you covered with bedside night stands, reading lights and electrical outlets. Montana makes sure there's always a great way to end the evening.



3100RL BEDROOM

MONTANA BATHROOM



3725RL



3402RL



3402RL



3625RE



Step into the Montana bathroom and revel in the home-like surroundings: Corian® vanity countertop, recessed LED lights in the ceiling and large showers. The oversized, couple-friendly medicine cabinet has a custom three bulb light fixture to provide the final decorative and functional touches. Stylish cabinetry, Corian countertops, plentiful storage and big showers...Do mornings get any better than this?



Get the free mobile app at <http://gettag.mobi> and scan this Tag.



SCAN HERE

TO SEE ALL OUR FLOORPLANS IN DETAIL AS WELL AS PHOTOS, 360° VIRTUAL TOURS, VIDEOS, & MUCH MORE.



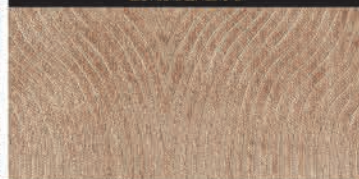
BLACKTHORN



CARBON



MOCHA



BIG SKY

PACKAGE

Few names conjure the same degree of respect among fifth wheel enthusiasts as Big Sky. The crown jewel of Keystone RV's line-up, the optional Big Sky package can be added to any Montana floor plan.

- 1 FULL BODY PAINT
- 2 METAL WRAPPED AWNING
- 3 RADIUS FIBERGLASS SHOWER
- 4 GOODYEAR™ "G" RANGE RADIAL TIRES
- 5 SIX POINT AUTO HYDRAULIC LEVELING
- 6 ONE TOUCH REMOTE CONTROL SYSTEM



BIG SKY
BLACK & GRAY
FULL BODY PAINT OPTION



BIG SKY
BLACK & TAN
FULL BODY PAINT OPTION



WALL CONSTRUCTION (R-10)

- ① 30" Wide x 78" Tall Entry Door with Window
- ② Frameless Deep Tint Safety Glass Windows with UV Inhibitor
- ③ Adjustable Electric Patio Awning
- ④ Automotive Finish High Gloss Fiberglass Exterior Walls, Baggage Doors & Entry Doors
- ⑤ Dual 1/8" Luan Backers with Staggered Seams
- ⑥ High Density Block Foam Insulation
- ⑦ 2" Welded Aluminum Wall Studs
- ⑧ Electro-Galvanized Sheet Metal Backing Strips
- ⑨ Max Turn Fiberglass Front Cap with Improved Turning Radius, Dual LED Light Bars & Hitch Vision Mirror
- ⑩ Rear Fiberglass Cap with Back-Up Lights & Rear Ladder

ROOF CONSTRUCTION (R-38)

- ⑪ One-Piece EPDM Roof with 12-year Warranty
- ⑫ Aluminum Radius Roof Corner Molding Wrap
- ⑬ 3/8" Fully Walkable Roof Decking
- ⑭ Radiant Technology Insulation
- ⑮ Fiberglass Insulation
- ⑯ 5" Arched Roof Rafters
- ⑰ Attic Vents
- ⑱ Dometic Quiet Zone™ 15,000 BTU A/C

FLOOR CONSTRUCTION (R-21)

- ⑲ Residential Stain Resistant Cut Pile Carpet
- ⑳ Residential 7lb Rebond Carpet Padding
- ㉑ Residential Linoleum
- ㉒ 5/8 Seamless Floor Decking
- ㉓ 3" Welded Aluminum Floor Joists
- ㉔ Enclosed & Insulated Water Lines Between Floor Joists
- ㉕ Large Capacity Heat Duct
- ㉖ Fiberglass Insulation
- ㉗ Astro-Foil Insulation Below Holding Tanks
- ㉘ Fully Enclosed Underbelly with One Piece Fluted Polypropylene

TIRES & CHASSIS

- ㉙ 12" Steel "Powder Coated" I-Beam Frame with Drop Frame Pass Through Storage
- ㉚ MOR/Ryde™ LRE 4000 Suspension MOR/Ryde™ Wet Bolt Kit with Bronze Bushings 8-Lug Dexter™ E-Z Lube Axles with Nev-R-Adjust Brakes 16" Goodyear™ Marathon Tires

5" ARCHED ROOF RAFTER

- Provides Unique Interior Feel and Look
- 5" Thick Insulation Consistent Throughout the Roof
- Arched Rafters Provide Greater Roof Weight Distribution
- Increased Interior Height Through the Montana Fifth Wheel



6 POINT HYDRAULIC AUTO LEVELING SYSTEM

This system has the strength you need and it is so easy to use that with one touch the coach levels itself.





FOUR SEASON LIVING: ZERO DEGREE TESTED AND UNSURPASSED HOT WEATHER COMFORT

» The industry leader in four season fifth wheel capabilities, Montana has been tested and approved for zero degree usage since 2005.

» Radiant technology insulation combined with a layer of fiberglass insulation provide the equivalent of R-38 roof insulation. Unlike conventional fifth wheel roofs that taper down to 2" thick at the sidewall, Montana's arched roof provides consistent 5" thick roof insulation across the entire span from sidewall to sidewall.

» The Montana sidewalls are laminated with R-10 solid block foam insulation.

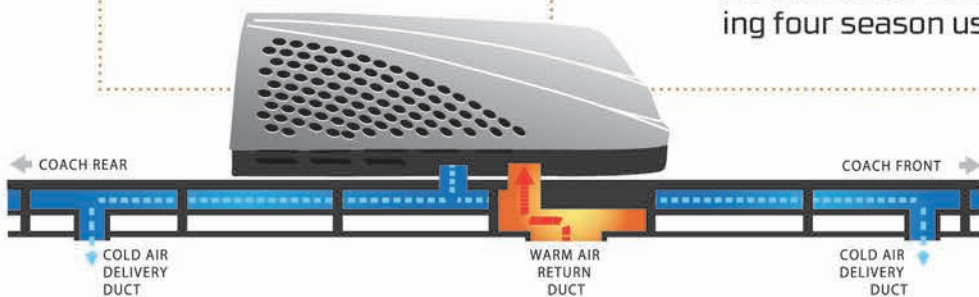
» The floor is insulated with a layer of heat reflective Astro-Foil plus a layer of fiberglass insulation equaling an R-21 value. Most importantly, the water lines are installed between the floor joists, near the heat duct and above all of the insulation and the heated underbelly.

» The holding tanks and dump valves are completely enclosed, insulated and heated.

» The low point drains are enclosed in the heated exterior convenience center.

» The optional second air conditioner is ducted and is controlled by the dual zone, digital thermostat. A remote sensor monitors the bedroom temperature.

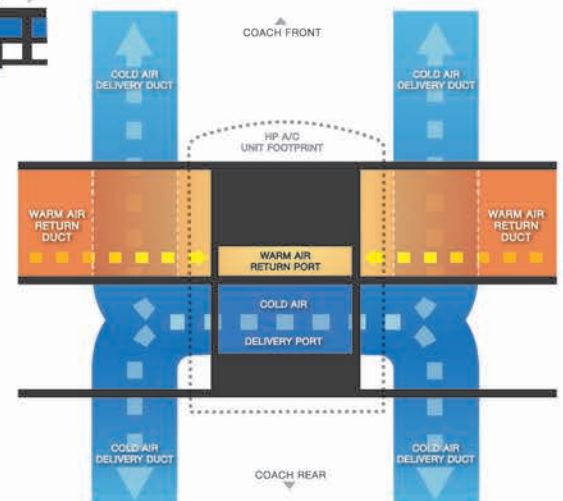
» Montana's vented attic provides vital escape routes for unwanted interior moisture that accumulates during four season usage.

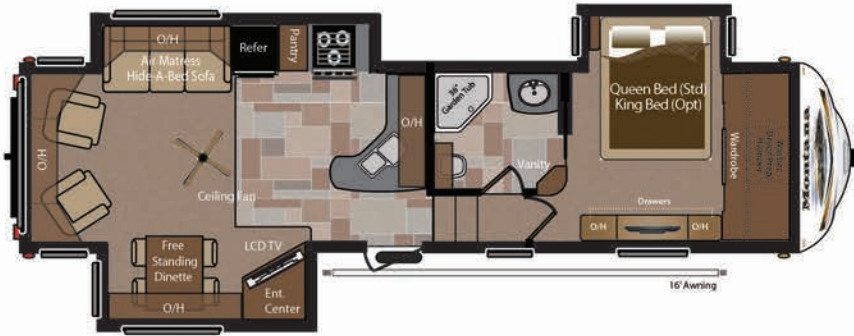


DOMETIC QUIET ZONE™ AIR RETURN SYSTEM

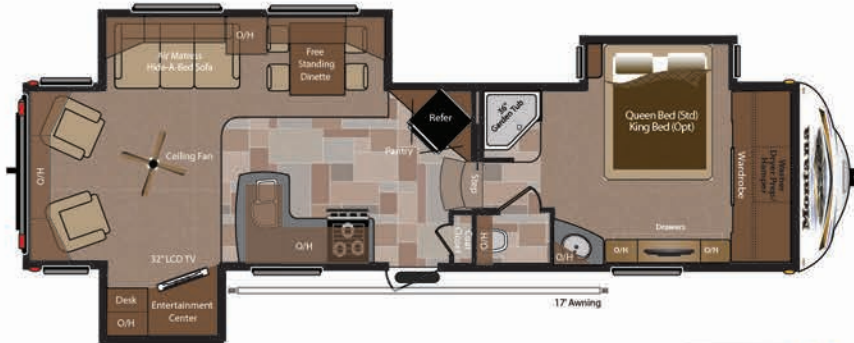


How it works: The Quiet Zone System™ feeds cool air directly into the ductwork system. Cool air enters a port built into the rafters at the first stage of distribution. Warm air is pulled through a separate ductwork system to be vented to the outside. This residential style system keeps noise and vibration away from the living space for quiet, cool comfort.

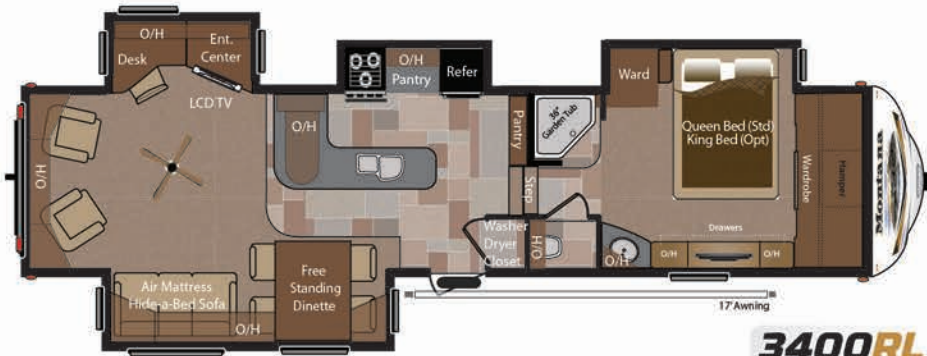




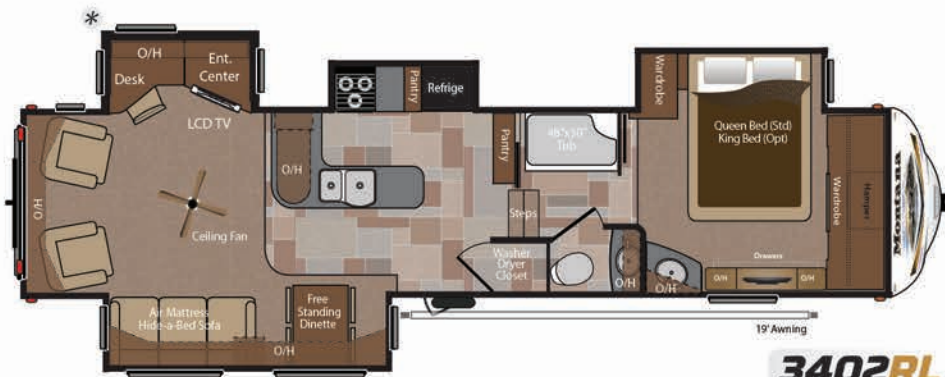
3100RL



3150RL

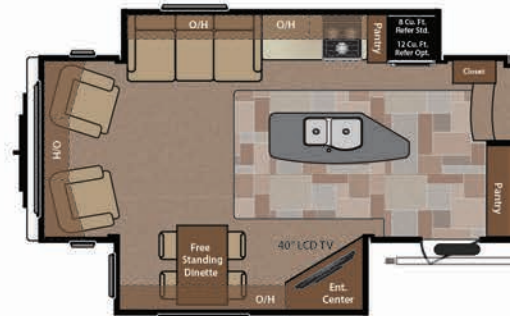
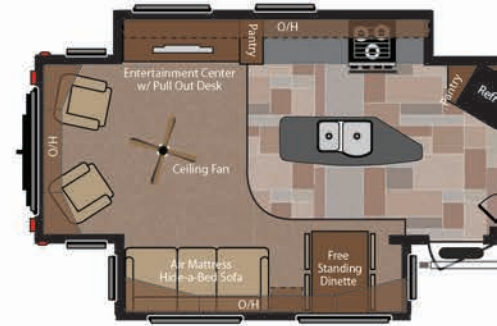


3400RL

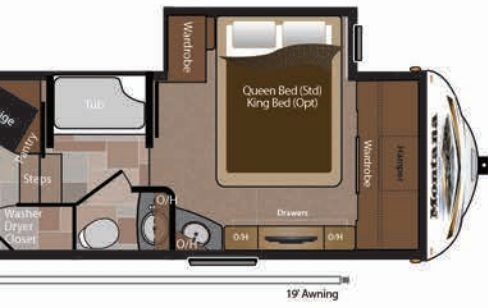


3402RL

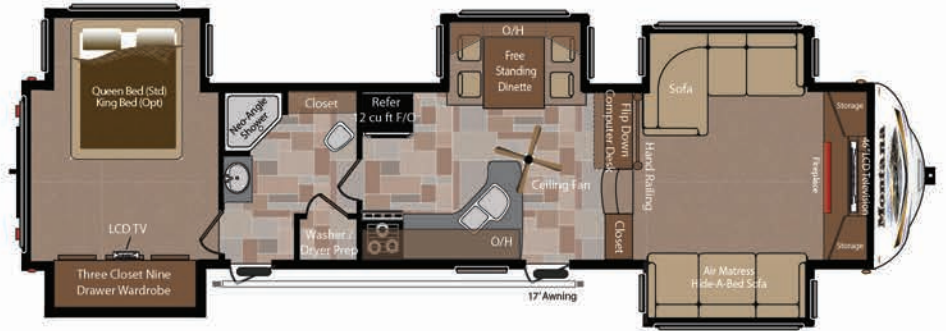
* Entertainment center and desk slide out design for Spring 2013 production.



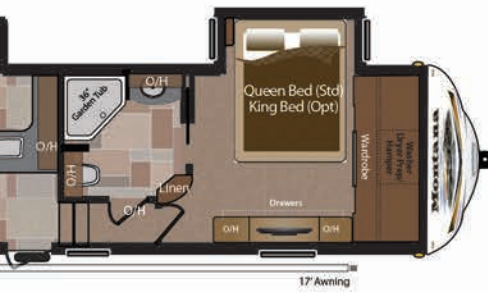
360° INTERIOR VIRTUAL TOURS AVAILABLE AT KEYSTONERV.COM



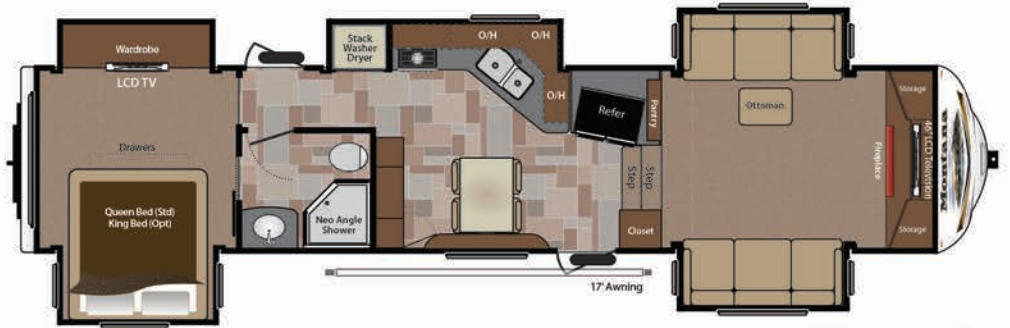
3582RL



3750FL



3625RE



3850FL



3725RL



3900FB

MODEL	3100RL	3150RL	3400RL	3402RL	3582RL	3625RE	3725RL	3750FL	3850FL	3900FB
SHIPPING WEIGHT	11573	11475	12533	12901	12803	12751	12815	12597	12935	12674
CARRYING CAPACITY	3027	3425	3327	3099	3187	3019	3185	3173	2995	3256
HITCH WEIGHT	2355	2410	2360	2635	2490	2270	2815	2270	2430	2430
EXTERIOR LENGTH*	35' 9"	35' 2"	38' 3"	39' 2"	39' 2"	38' 6"	39' 8"	38' 8"	39' 9"	39' 8"
EXTERIOR HEIGHT**	12' 11"	12' 11"	12' 11"	12' 11"	12' 11"	12' 9"	12' 11"	12' 11"	12' 11"	12' 11"
FRESH WATER	66	66	66	66	66	66	66	66	66	66
WASTE WATER	50	50	50	50	50	50	50	50	50	93
GRAY WATER	93	93	93	93	93	93	93	93	93	93
LPG CAPACITY LB.	60	60	60	60	60	60	60	60	60	60
TIRE SIZE - MONTANA	ST235/80R16E	ST235/80R16E	ST235/80R16E	ST235/80R16E	ST235/80R16E	ST235/80R16E	ST235/80R16E	ST235/80R16E	ST235/80R16E	ST235/80R16E
TIRE SIZE - BIG SKY	LT235/85R16G	LT235/85R16G	LT235/85R16G	LT235/85R16G	LT235/85R16G	LT235/85R16G	LT235/85R16G	LT235/85R16G	LT235/85R16G	LT235/85R16G

DISCLAIMER: Product information is as accurate as possible as of the date of publication of this brochure. All features, floor plans, and specifications in this brochure are subject to change without notice. Please also consult Keystone's web site at www.keystonerv.com for more current product information and specifications. Tow Vehicle Disclaimer. CAUTION: Owners of Keystone recreational vehicles are solely responsible for the selection and proper use of tow vehicles. All customers should consult with a motor vehicle manufacturer or their dealer concerning the purchase and use of suitable tow vehicles for Keystone products. Keystone disclaims any liability or damages suffered as a result of the selection, operation, use or misuse of a tow vehicle. KEYSTONE'S LIMITED WARRANTY DOES NOT COVER DAMAGE TO THE RECREATIONAL VEHICLE OR THE TOW VEHICLE AS A RESULT OF THE SELECTION, OPERATION, USE OR MISUSE OF THE TOW VEHICLE. *Length is defined as the distance from the centerline of hitch pin/coupler to rear bumper of trailer. Add 6 inches for MDR/ryde pin box. ** Add 6 inches for second A/C. 01/2013

NEW STANDARD FEATURES

- » Automotive finish high gloss gel coated fiberglass exterior
- » Fantastic fan in kitchen or living room
- » 30" Over-The-Range convection/microwave oven with range hood
- 5 » Solid hardwood slide-out fascia
- 12 » Industry first full length arched ceiling
 - » Drawer under refrigerator (Models 3100, 3400, 3402, 3625, 3725, 3900)
- 17 » Four step entry
 - » 35,000 BTU furnace with auto ignition and high capacity in line heating system
- 10 » Full extension drawer guides

PARAMOUNT PACKAGE

- 16 » Frameless windows
 - » 12" I-Beam frame
 - » New Max Turn front cap w/ dual LED light bars & hitch vision
 - » New rear cap w/ back-up lights
 - » Enhanced coverage graphics
 - » 24 Diode LED recessed interior lighting
 - » Backlit LED light strips
 - » Contemporary sorrel wall board
 - » Upgraded Davinci Trek linoleum
 - » Residential stain resistant cut pile carpeting
- 2 » 70/30 stainless steel kitchen sink
 - » High arch pull out kitchen faucet
- 3 » Royal Entourage Corian® countertops and Corian kitchen backsplash
 - » Flush mounted Corian range covers
 - » Glazed cherry hardwood cabinet doors, drawers, and stiles
- 6 » Elegant crown molding above kitchen & bedroom cabinets
- 4 » Hand laid mullion cabinet doors in living area & bedroom
 - » Hand laid mullion bedroom closet doors
 - » "Slide Wide Open" bedroom closet w/LED track lighting
 - » Increased cedar lined storage under bed w/hidden storage
- 7 » New bedroom dresser & armoire w/residential wood blinds
- 8 » Bedroom 32" HD LCD TV
- 9 » Bedroom cell phone charging station

MOVING TO MONTANA PACKAGE

- » Queen bed (60 by 80-inch mattress)
- » Heavy duty wet bolt kit with bronze bushings and half inch shackle links
- 19 » Central exterior water and convenience center
 - » Dexter™ E-Z Lube axles with self adjusting brakes
 - » MOR/Ryde™ LRE 4000 rubber suspension system
 - » 5" Arched roof rafters
 - » Aluminum wheels
 - » Arctic insulation package
 - » Vented attic system
 - » Wire & frame for ducted 2nd A/C w/ remote sensor & dual zones
 - » 1/2 Turn hydraulic selector valves
 - » Deep tint safety glass windows
 - » 15,000 BTU Dometic "Quiet Zone"™ air conditioner
 - » (2) Hi back recliners
- 1 » Washer/Dryer prep
 - » FM/CD/DVD Player w/ 5.1 surround sound & HDMI cable
 - » Dual reading lights over the bed
 - » Ceiling fan with light kit
 - » Raised panel refer front
 - » Two flush mount kitchen sink covers
- 13 » Air mattress Hide-A-Bed sofa
 - » Welded, aluminum framed walls, floors, and slide-outs
 - » R-9 laminated sidewalls with dual layered luan

- » HD Digital TV antenna w/ booster
- » Deluxe porcelain toilet
- » RG-6 Satellite prep w/dual inputs for living area TV & bedroom TV
- » Black tank flush
- » Sky dome over Tub
- » Fold away entry handle
- » Rear roof ladder
- » Dual patio security lights
- » Undermount spare tire & carrier
- » Carbon monoxide detector and smoke detector
- » 50 Amp Service w/detachable cord

FULL TIME LIVING PACKAGE

- 21 » Insulated slam latch pass thru storage compartment doors with gas struts
- 18 » Enormous drop frame pass thru storage compartment
 - » 30" Deep bedroom slide-out
- 14 » 6'6" Tall main slide-outs
 - » Radiant technology roof insulation (R-38 total)
 - » Seamless underbelly enclosure
 - » Free standing dinette
- 20 » 90 AMP Intelli-Power 4500 converter
 - » 32" or 40" HD LCD TV
 - » Welcome home light
 - » 12 gallon DSI gas/electric water heater
 - » 50 gallon black tank capacity
 - » 93 gallon gray tank capacity
 - » 66 gallon fresh water capacity

EQUIPMENT OPTIONS

- » Low profile ducted 2nd 13,500 BTU A/C
- » Fantastic vent fan (location varies by model)
- » Generator ready (Onan 5.5 Kw Specifications)
- » Onan Marquis Gold 5.5 kw - LP generator
- » 12' Cu. Ft. four door refrigerator (NA 3150)
- 11 » Central vacuum
- 15 » Electric fireplace
 - » Neo-Angle shower IPO garden tub (NA 3402, 3582, 3725, 3750, 3850)
 - » Rolling island pantry (3100 only)

EXTERIOR OPTIONS

- » Mor/Ryde™ hitch pin
- » Dual pane safety glass windows
- » Slide awning package
- » 6-Point hydraulic auto-leveling system
- » Goodyear™ "G" Range tires and rims

INTERIOR OPTIONS

- » King size bed
- » End table and lamp
- » Sofa table
- » Hi-Back desk chair w/ step ladder
- » (2) Leather recliners
- » Leather air mattress Hide-A-Bed sofa
- » Booth dinette IPO free standing(n/a 3100, 3625, 3750, 3850)

BIG SKY PACKAGE

- » Full body paint (Black & Grey or Black & Tan)
- » 6 Point automatic hydraulic leveling system
- » Goodyear™ "G" Range tires and rims
- » Metal wrapped awning
- » One piece fiberglass shower w/ radius enclosure
- » One touch remote control system

INTERIOR



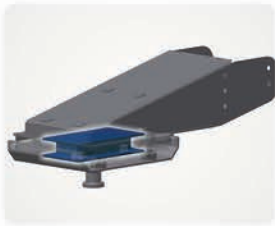
EXTERIOR



ULTIMATE TOWABILITY BY APPLYING "MAX TURN" TECHNOLOGY

EXPERIENCE BUILT BY

AFTER BUILDING OVER 65,000 MONTANA FIFTH WHEELS, WE'VE PERFECTED THE ART OF TOWING. YOU CAN COMPARE FEATURES. YOU CAN COMPARE FLOOR PLANS. BUT WHEN IT COMES TO TOWING, THERE IS SIMPLY NO COMPARISON TO A MONTANA FIFTH WHEEL.



OPTIONAL MOR/RYDE™ PIN BOX

The optional MOR/Ryde pin box works in a horizontal planar motion (both longitudinally and laterally) to absorb towing shock and effectively diminish the transfer of forces from fifth wheel to truck. Forget about that harsh, jerky chucking action - not to mention the added strain on you!



MOR/RYDE™ LRE 4000 SUSPENSION

The MOR/Ryde™ LRE 4000 Suspension increases dynamic axle travel by up to 4"! No other suspension on the market offers this level of protection. Increased travel means smoother towing, improved towability and better protection from damaging road shock.



LOW HITCH WEIGHTS

While other fifth wheels put tremendous strain on the tow vehicle with hitch weights exceeding 2500 lbs, most Montana models offer hitch weights below 2500 lbs.



MOR/RYDE™ WET BOLT KIT

Montana also uses the heavy-duty shackle upgrade kit that includes 1/2" shackle plates, wet or grease-able bolts and bronze bushings. This kit provides longer lasting, more durable and better performing components... another "best in class" feature.



GOODYEAR™ TIRES

Every Montana fifth wheel runs on aluminum 8-lug wheels and 16" E-Range Goodyear™ tires or optional 16" G-Range Goodyear™ tires.



DEXTER NEV-R-ADJUST™ BRAKES

The Dexter Nev-R-Adjust™ brakes adjust automatically in the forward moving direction, eliminating the need for manual adjustments while maintaining optimum performance and braking power.



MAX TURN TECHNOLOGY FRONT CAP

The Max Turn Technology molded fiberglass front cap features a dramatic, aviation style curved shape to dramatically reduce the drag coefficient for maximum fuel economy.



MAX TURN TECHNOLOGY FRONT CAP TURNING RADIUS

Max Turn technology features an integrated frame and front cap design to allow for an industry best short bed truck to fifth wheel angle. Because the front rail of the Montana frame is curved to provide more radius, making a 90 degree turn no problem with short bed trucks.

CONNECT WITH KEYSTONE RV AND STAY UP TO DATE WITH MONTANA NEWS AND INFORMATION |



VISIT OUR ALL NEW WEBSITE TO VIEW INTERIOR PHOTOS AND MUCH MORE AT KEYSTONERV.COM |



Montana
WWW.KEYSTONERV.COM/MONTANA



Go RVing.

Visit the Montana Owner's Club web site
Independently created and maintained by
Montana fifth wheel owners.
WWW.MONTANAOWNERS.COM



Keystone RV Company

