

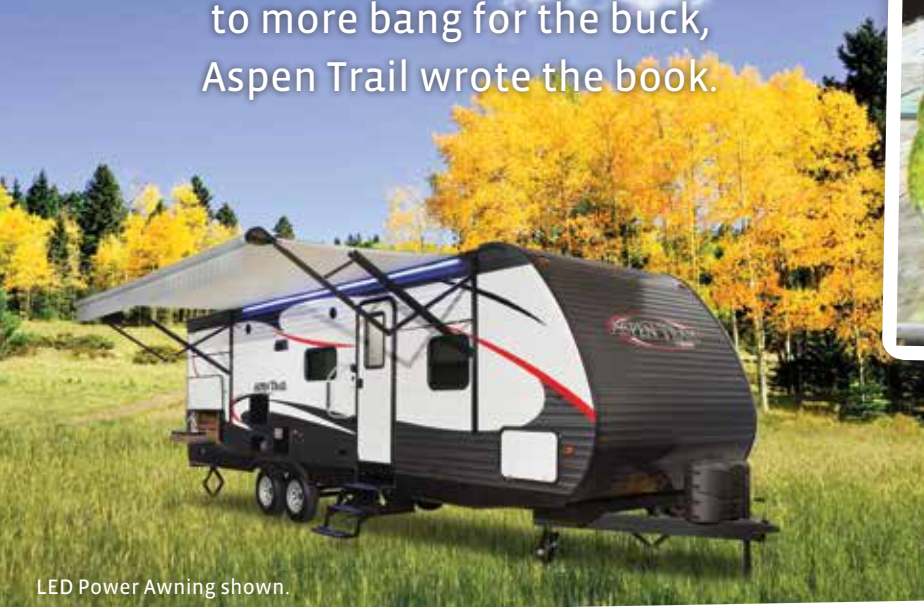
ASPEN TRAIL



ASPEN TRAIL

TRAILBLAZING VALUE

More conveniences and more standard features mean more trailblazing value. When it comes to more bang for the buck, Aspen Trail wrote the book.



LED Power Awning shown.



EXPANDED SLIDE-ROOM SPACE

With 6 feet of height and flush-floor sliderooms, you'll enjoy more headroom than most other RVs.



ASPEN TRAIL 2750BHS | SANDALWOOD



MAX HEADROOM

Our 82 inches of interior height make Aspen Trail's living areas more residential than ever.

ASPEN TRAIL 2750BHS | SANDALWOOD

BATHROOM ACCENTS

Freshen up in your spacious bath as natural light shines through the convenient skylight.



ASPEN TRAIL 2750BHS

KICKING IT UP A NOTCH

Say goodbye to low-quality, particleboard cabinetry, and say hello to real, hardwood, cabinet doors and drawer fronts. Aspen Trail cabinets are built stronger for more years of RVing enjoyment.



ASPEN TRAIL 2750BHS



THE BUNK HOUSE

Double-over-double bunk beds, a storage area and a pull curtain for privacy make the Aspen Trail's bunk room the perfect getaway place for the kids! (2750 model shown)



STRETCH OUT

The 60" x 80" residential-sized queen bed is big enough to stretch out and relax after a long day of fun.



"CURVE" APPEAL

Rounded, handcrafted radius walls and hardwood maple cabinetry avoid the "boxy" appearance, giving Aspen Trail interiors a modern, stylish look you'll appreciate.



TRAILBLAZING VALUE

Inside and out, you'll find all sorts of extras in Aspen Trail. It's what sets us apart — and it's what we call "Trailblazing Value."

MASTER CONTROL

Our sleek master control panel labels every switch and puts quick feature control at your fingertips.

ENCLOSED UNDERBELLY

Our fully enclosed and heated underbelly offers four-season RVing and protects your investment from the elements, rodents and road debris.

MEGA PASS-THROUGH STORAGE

We maximized the Aspen Trail's storage area by angling the walls of the space. More space means even more room to bring it all!





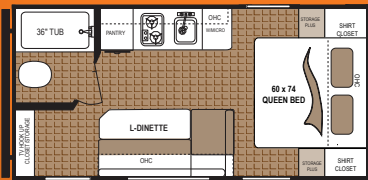
ASPEN TRAIL 1700BH | ADOBE



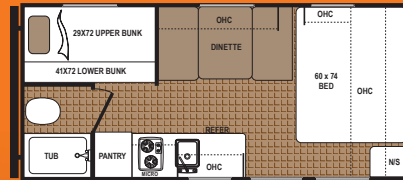
ASPEN TRAIL 1700BH | ADOBE

ASPEN TRAIL MINI BIG COMFORT

Even our "mini" floor plans are feature-rich, offering the ultimate in convenience, comfort and value



ASPEN TRAIL | 1600RB
 Ext. Length: 21' 5"
 Ext. Height: 8' 11"
 Average Shipping Weight: 3,142
 Sleeps: 2-4



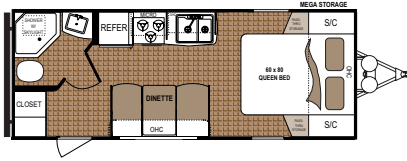
ASPEN TRAIL | 1700BH
 Ext. Length: 21' 5"
 Ext. Height: 8' 8"
 Average Shipping Weight: 3,322
 Sleeps: 2-4

Aspen Trail Mini standards and options can be found at www.dutchmen.com

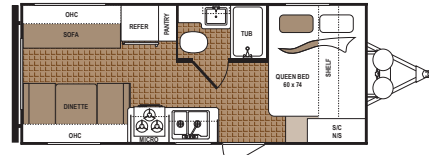
ASPEN TRAIL SPECIFICATIONS

MODEL	FLOORPLAN	DIMENSIONS			WEIGHTS (LBS.)			TANKS (GALS.)		
		*EXTERIOR TRAVEL LENGTH	EXTERIOR WIDTH	EXTERIOR HEIGHT (WITH A/C)	**AVERAGE SHIPPING WEIGHT	DRY HITCH WEIGHT	CARGO CARRYING CAPACITY	***FRESH WATER CAPACITY	GREY WATER CAPACITY	BLACK WATER CAPACITY
Travel Trailers	1900RB	24' 8"	96"	10' 8"	4,211	505	3,389	52	42	42
	1930RDWE	22' 11"	96"	10' 8"	4,170	453	3,390	52	42	42
	2050QBWE	24' 10"	96"	10' 8"	4,181	460	3,180	52	42	42
	22210RBS	25' 10"	96"	11' 2"	5,698	632	1,902	52	42	42
	2390RKS	27' 2"	96"	11' 4"	5,632	788	1,968	52	42	42
	2460RLS	28' 3"	96"	11' 4"	5,604	561	1,996	52	42	42
	2710BH	28' 7"	96"	10' 7"	4,655	559	2,945	52	42	42
	2720RKS	31' 11"	96"	11' 2"	6,536	840	3,144	52	42	42
	2730RBS	31'	96"	11' 6"	6,935	821	2,745	52	78	42
	2750BHS	31' 4"	96"	11' 4"	6,288	792	3,392	52	42	42
	2780RLS	31' 6"	96"	11' 2"	6,560	854	3,120	52	42	42
	2810BHS	32' 2"	96"	11' 4"	6,435	837	3,245	52	42	42
	2890BHS	32' 11"	96"	11' 2"	6,482	792	3,364	52	42	42
	3010BHDS	35' 9"	96"	11' 7"	7,723	927	1,957	52	42	42
	3100BHS	37' 6"	96"	11' 8"	8,562	1,027	2,614	52	78	42
	3150REDS	34'	96"	11' 5"	7,996	1,027	2,614	52	78	42
3600QBDS	39' 9"	96"	11' 5"	8,089	1,052	3,087	52	78	42	
Minis	1600RB	21' 5"	96"	8' 11"	3,142	346	658	27	28	28
	1700BH	21' 5"	96"	8' 8"	3,322	342	954	27	28	28

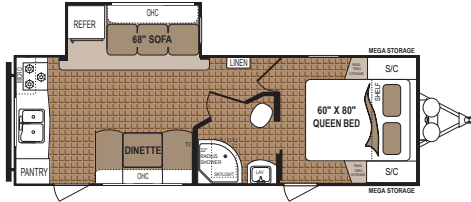
*Length is defined as the distance from the centerline of hitch pin/coupler to rear bumper of trailer. **Our weights represent how most units are built, inclusive of many commonly-ordered options. ***Fresh water capacity includes water heater capacity.



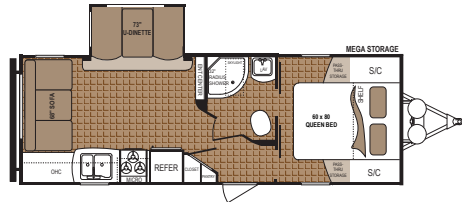
ASPEN TRAIL | 1900RB
 Ext. Length: 24' 8" Ext. Height: 10' 8"
 Average Shipping Weight: 4,221 Sleeps: 2-3



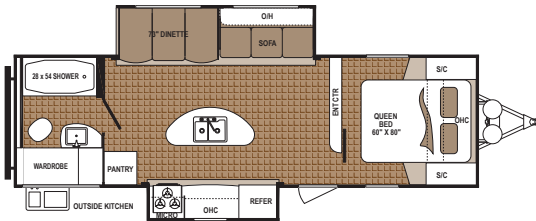
ASPEN TRAIL | 1930RDWE
 Ext. Length: 22' 11" Ext. Height: 10' 8"
 Average Shipping Weight: 4,170 Sleeps: 3-4



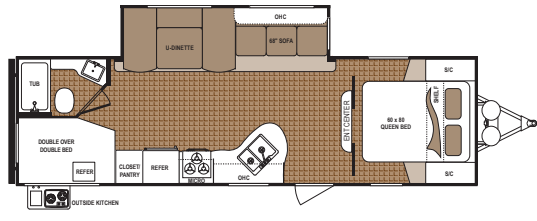
ASPEN TRAIL | 2390RKS
 Ext. Length: 27' 2" Ext. Height: 11' 4"
 Average Shipping Weight: 5,632 Sleeps: 3-4



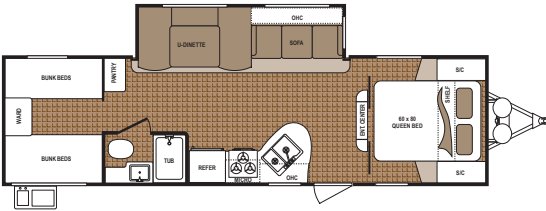
ASPEN TRAIL | 2460RLS
 Ext. Length: 28' 3" Ext. Height: 11' 4"
 Average Shipping Weight: 5,604 Sleeps: 3-5



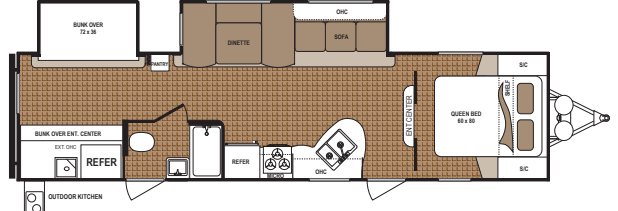
ASPEN TRAIL | 2730RBS
 Ext. Length: 31' Ext. Height: 11' 6"
 Average Shipping Weight: 6,935 Sleeps: 3-4



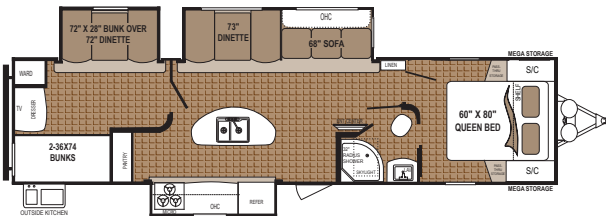
ASPEN TRAIL | 2750BHS
 Ext. Length: 31' 4" Ext. Height: 11' 3"
 Average Shipping Weight: 6,288 Sleeps: 6-8



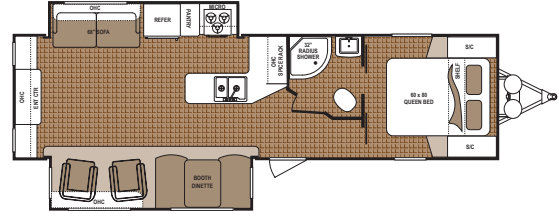
ASPEN TRAIL | 2890BHDS
 Ext. Length: 32' 11" Ext. Height: 11' 2"
 Average Shipping Weight: 6,482 Sleeps: 6-8



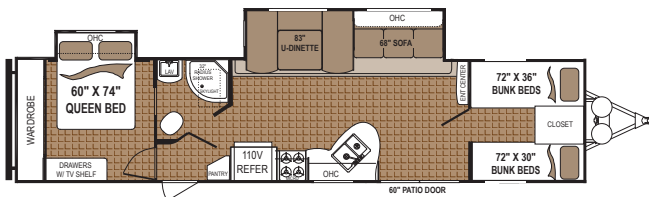
ASPEN TRAIL | 3010BHDS
 Ext. Length: 35' 9" Ext. Height: 11' 7"
 Average Shipping Weight: 7,723 Sleeps: 6-8



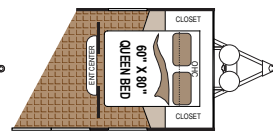
ASPEN TRAIL | 3100BHS
 Ext. Length: 37' 6" Ext. Height: 11' 8"
 Average Shipping Weight: 8,562 Sleeps: 8



ASPEN TRAIL | 3150REDS
 Ext. Length: 34' Ext. Height: 11' 5"
 Average Shipping Weight: 7,996 Sleeps: 4-6

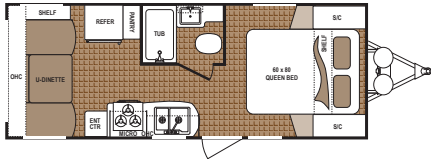


ASPEN TRAIL | 3600QBDS
 Ext. Length: 39' 9" Ext. Height: 11' 5" Average Shipping Weight: 8,089 Sleeps: 8-10

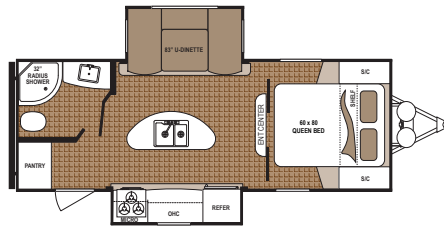


DÉCOR

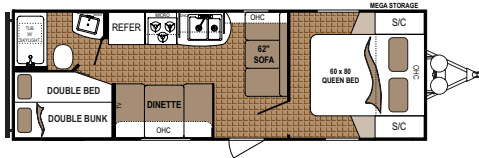
ADOBE
(MINI FLOORPLANS ONLY)



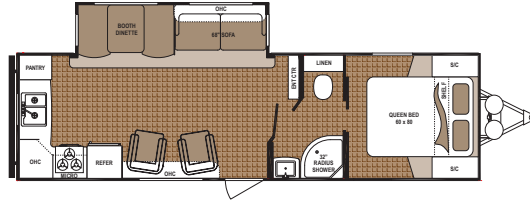
ASPEN TRAIL | 2050QBWE
Ext. Length: 24' 10" Ext. Height: 10' 8"
Average Shipping Weight: 4,181 Sleeps: 3-4



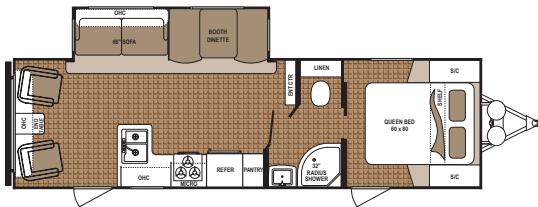
ASPEN TRAIL | 2210RBS
Ext. Length: 25' 10" Ext. Height: 11' 2"
Average Shipping Weight: 5,698 Sleeps: 2-3



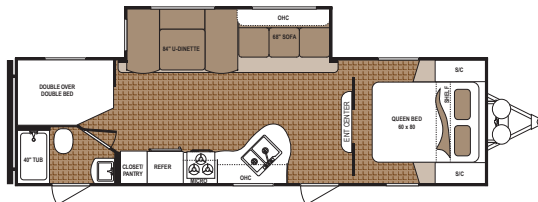
ASPEN TRAIL | 2710BH
Ext. Length: 28' 7" Ext. Height: 10' 7"
Average Shipping Weight: 4,655 Sleeps: 4-6



ASPEN TRAIL | 2720RKS
Ext. Length: 31' 11" Ext. Height: 11' 2"
Average Shipping Weight: 6,536 Sleeps: 3-4



ASPEN TRAIL | 2780RLS
Ext. Length: 31' 6" Ext. Height: 11' 2"
Average Shipping Weight: 6,560 Sleeps: 3-4



ASPEN TRAIL | 2810BHS
Ext. Length: 32' 2" Ext. Height: 11' 4"
Average Shipping Weight: 6,435 Sleeps: 6-8

PEBBLESTONE

ESPRESSO

SANDALWOOD

STANDARDS AND OPTIONS

INTERIOR STANDARD FEATURES

- 3-burner range with oven
- 6 cu. ft. gas/electric refrigerator
- 6-gal. gas/electric water heater with DSI 12-volt, 55-amp converter
- 60/40 kitchen sink with high-rise faucet
- 82" interior height, 6 ft. ceiling in slideroom
- 8,000-BTU non-ducted air (1700 and 1900)
- 13,500-BTU ducted air (n/a 1700 and 1900)
- Bath skylight
- Bath tub exhaust fan
- Bedsprad
- Black refrigerator insert
- Cable TV hookup with booster
- Foot-flush toilet
- High-output furnace
- LED lights
- Microwave
- Radiu overhead cabinets

- Range hood with light and exhaust fan
- Shower/tub surround
- Water heater bypass

EXTERIOR STANDARD FEATURES

- 2 exterior speakers
- Diamond-plate rock guard
- Digital TV antenna
- Dual 20-lb. propane bottles with cover
- E-Z Lube axles
- Extended rain gutters
- Front and rear stabilizing jacks
- Heated and enclosed underbelly
- Awning
- Mega pass-thru storage compartment
- Power cord
- Radial tires
- Seamless, one-piece, walk-on roof
- Triple entry steps (deep slides)
- Tinted safety-glass windows

ASPEN TRAIL UPGRADE PACKAGE

- 60" x 80" Everdream mattress
- Aerodynamic front profile
- Aspen Trail central command center
- Full-extension, roller ball bearing drawer guides
- Hardwood cabinet doors and drawers
- Laundry chute (select models)
- Stereo with CD/DVD/Bluetooth
- Upgraded wood plank linoleum

MANDATORY OPTIONS

- Aspen Trail Upgrade Package
- Outside shower
- Power awning with LED lights

OPTIONS

- 2nd 13,500-BTU non-ducted bedroom A/C (select models only)
- 2nd A/C prep with 50-amp service (select models only)
- 14" aluminum wheels (smaller

models)

- 15" aluminum wheels (larger models)
- 29" LED TV
- 15,000-BTU A/C in place of 13,500-BTU A/C
- Dual 30 lb. propane bottles with cover
- Electric front and rear stabilizer jacks
- Free-standing table and 4 chairs (3150REDS only)
- Front queen bed in place of bunks (3600 only)
- Power tongue jack with docking light
- Spare tire with cover
- Tri-fold hide-a-bed in place of flip sofa (select models)

CODES & SEALS

- CSA construction and seal
- RVIA seal
- State seal (where applicable)
- Winterization

DISCLAIMER: Product information is as accurate as possible as of the date of brochure publication. All features, floorplans and specifications in this brochure are subject to change without notice. Please consult Dutchmen's website at www.Dutchmen.com for current product information and specifications. Tow Vehicle Disclaimer. **CAUTION:** Owners of Dutchmen recreational vehicles are solely responsible for the selection and proper use of tow vehicles. All customers should consult with a motor vehicle manufacturer or their dealer concerning the purchase and use of suitable tow vehicles for Dutchmen products. Dutchmen disclaims any liability or damages suffered as a result of the selection, operation, use or misuse of a tow vehicle. DUTCHMEN'S LIMITED WARRANTY DOES NOT COVER DAMAGE TO THE RECREATIONAL VEHICLE OR THE TOW VEHICLE AS A RESULT OF THE SELECTION, OPERATION, USE OR MISUSE OF THE TOW VEHICLE. REFERENCE DUTCHMEN MANUFACTURING OWNERS MANUAL FOR LIMITED WARRANTY DETAILS.

TRAILBLAZING VALUE



Dutchmen—A North American Campground Classic

Few manufacturers have built RVs for 25+ years, and only one has set the standard for innovation AND value. Dutchmen **IS** "A North American Campground Classic."



Dutchmen®

Legendary Innovation. Trailblazing Value.

MORE STANDARD FEATURES MORE VALUE

Dutchmen RVs turn more heads on the lot and in the campground than any other. Why? While other manufacturers offer features as options, Dutchmen tends to make those same features standard. Call it "bang for the buck," "more for your money," or simply "more value." **We've built a reputation for bringing RV owners more standard features for less money** for more than 25 years... and it's a reputation we plan to keep.

300 STRONG

NATION WIDE DEALER NETWORK

More than 300 Dutchmen dealers across North America and our industry-leading service center in Goshen, Indiana, combine for your peace of mind before, during and after the sale. Rest assured no matter where your travels take you, **the best-resourced RV manufacturing company in the world is behind you all the way.**

PO BOX 2000 • 2164 Caragana Court
Goshen, Indiana 46527 Sales: 574.537.0600
www.dutchmen.com

At Dutchmen, quality is our standard. **Every single Dutchmen RV that comes off the line receives its own pre-delivery inspection.**

Typically, a competitor performs random inspections, meaning you won't find this commitment to quality anywhere else.



Scan this QR Code for a **360° view** of the Aspen Trail interior.



www.dutchmen.com

Visit us online to see all of the Dutchmen brands, innovative models and spacious floorplans.

Your local dealer

From giving advice to servicing products, we consider our loyal dealers the best resource for learning about Dutchmen products.

ASP-HM0216-30k