

**OPTIONS**

**A**

15 Cu. Ft. Fridge

**B**

Power Theater Sofa

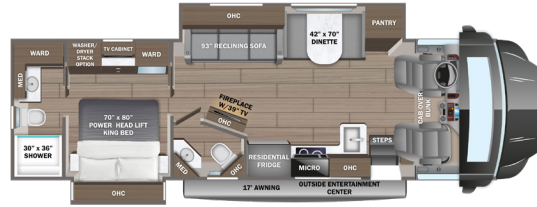
**C**

Hide-a-bed

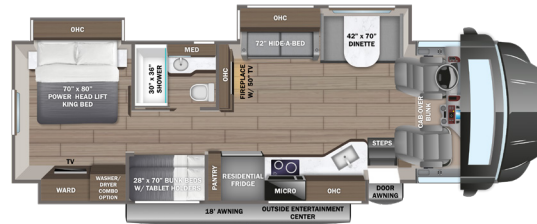
**D**

Freestanding Dinette

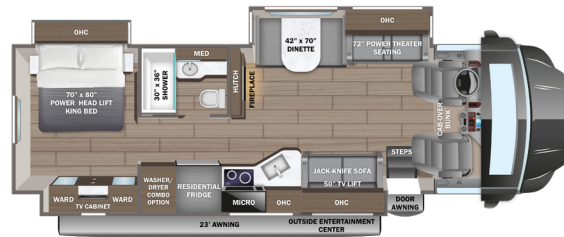
**37K**    OPTIONS: A, D



**37L**    OPTIONS: A, B



**37M**    OPTIONS: A, C, D



## EXTERIOR SELECTIONS



Ashland Full-Body Paint



Carthage Full-Body Paint



Clarington Full-Body Paint



Perry Full-Body Paint

# STANDARDS & OPTIONS

## CUSTOMER VALUE PACKAGE

JRide® Premium: Computer-balanced driveshaft, rear air suspension, heavy-duty rear stabilizer bar, full air brakes, SACHS shocks

One-piece, seamless, fiberglass front and rear caps  
Automotive-bonded, panoramic window in front cap with power shade

Lippert™ 4000 series dual-pane frameless bonded windows  
(2) 15,000 BTU A/C units with heat pump on main A/C

Electric patio awning with LED lights

2,000W pure sine wave inverter

Power cord reel with 50-amp service

Sony® infotainment center with tilt/swivel, Apple® CarPlay and Android Auto™

Backup and side-view cameras

Residential refrigerator

Convection microwave oven

## DRIVING

Freightliner® S2RV Plus chassis

GVWR- 31,000 lb.

GCWR- 43,000 lb.

Cummins® ISB 6.7L 360 HP diesel engine with 800 ft.-lb. torque

Allison® 3000 MH automatic transmission

185-amp alternator

G-rated highway tires- 275/80R22.5

Alcoa® aluminum wheels

Engine exhaust brake

12,000 lb. rear hitch receiver

7-pin plug

Dual 12V chassis batteries

100 gal. fuel tank

10 gal. DEF tank

6-way power driver and passenger seats

Deluxe heated, remote-controlled, side-view mirrors

Tilt steering wheel

Cruise control

Detroit automatic wipers/headlights

Power windows and door locks

Auxiliary start switch

## EXTERIOR

StrongholdVBL™ roof, floor and sidewalls

Bead-foam insulation (R-24 max roof, R-9 max floor and R-8 max walls)

One-piece, seamless, crowned fiberglass roof

Premium Sikkens full-body paint

Automatic hydraulic leveling jacks

Entrance door with industry's largest travel-view window

Electric-powered entrance step

Slideout awning(s)

Exterior entertainment center with outside speakers and LED

HD Smart TV mounted on swivel bracket

Winegard® In-motion satellite dish

Carpeted, full pass-through storage compartments with

Keyed-Alike™ lockable slam-latch doors

Thetford® Sani-Con Turbo macerator system

Third brake light

Cable TV hookup with RG-6 coax and video selector switch

Winegard 2.0 Wi-fi/4G antenna

Onan® 8,000W Quiet Diesel generator and auto-gen start

200W solar panel with dual controller

(4) 6V AGM (220Ah) house batteries on slideout tray

Transfer switch with reverse polarity protection

24.5 gal. propane tank (83 lb.)

LP quick-connect hookup

Exterior utility center

Winterization drain system

Black tank flush

Outside shower

12V demand water pump

Water filtration system

## INTERIOR

Custom-molded ABS surround in cab-over area

Overhead bunk with 750 lb. capacity

Firefly total coach control system with wall-mounted touchscreen and mobile app

84 in. interior ceiling height with padded vinyl ceiling

High-intensity, recessed LED ceiling lights

LED-lit fascia

Vinyl plank flooring

Hardwood cabinet doors and drawer fronts

Deluxe hidden cabinet hinges

Ball-bearing drawer guides

30,000 BTU auto-ignition furnace

10 gal. gas/electric water heater

Electric fireplace

Jayco-exclusive, easy-operation legless dinette table

2-point lap safety belts in all designated seating locations

Car seat tethers (select floorplans)

Integrated day/night cassette shades

LED HD Smart TV in living area

JBL® audio system

Wood-framed kitchen window with spice cabinets

2-burner induction cooktop

LED-lit, solid-surface kitchen countertops with recessed

stainless steel sink and sink covers

Shower with decorative surround, glass door, skylight and light

Porcelain toilet with foot flush

Recessed stainless-steel bathroom sink

Powered roof vent in bathroom with wall switch

Walk-around, king-size bed with power head lift, bedspread and nightstands

USB port and wireless charging in nightstands

Under-bed storage

LED HD Smart TV in bedroom

Large wardrobes

Bunks with industry-exclusive 300 lb. capacity each (37L)

Wall-mounted tablet holder in each bunk (37L)

Smoke alarm

Carbon monoxide detector

Fire extinguisher

## OPTIONS

Power theater seating (37L) (STD on 37M)

Hide-a-bed sofa ILO theater seating (37M)

Freestanding table with 4 chairs (37K, 37M)

15 cu. ft. 12V refrigerator

Combination washer/dryer (37L, 37M)

Stackable washer/dryer (37K)

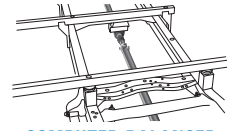
Starlink satellite internet system with KING Jack™ antenna

IPO Winegard Connect 2.0

Canadian Shaw® TRAV'LER® satellite dish

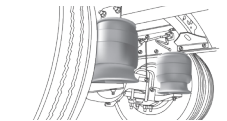
Winegard® TRAV'LER® satellite dish - DIRECTV®

Slide-out tray with 12V refrigerator cooler in basement



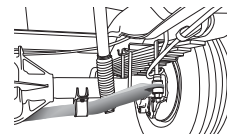
### COMPUTER-BALANCED DRIVESHAFT

Ensures smooth and efficient power transfer to the wheels



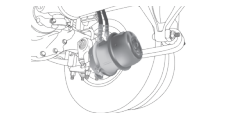
### REAR AIR SUSPENSION

Softens ride and improves handling



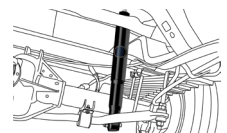
### HEAVY-DUTY REAR STABILIZER BAR

A larger bar and polyurethane bushings, instead of rubber, transfer power faster for extra support, more stability and easier handling



### FULL AIR BRAKES

Deliver robust stopping power, even on grades



### SACHS SHOCKS ABSORBERS

Large diameter tube design pairs gas and hydraulics to resist heat and pressure while independently adjusting to changing road conditions

FLOORPLAN	GVWR (lbs.)	GCWR (lbs.)	WHEEL BASE	OVERALL LENGTH	EXTERIOR HEIGHT WITH SATELLITE AND A/C	EXTERIOR WIDTH	INTERIOR HEIGHT	FRESH WATER CAPACITY (gal.)	GRAY WASTE WATER CAPACITY (gal.)	BLACK WASTE WATER CAPACITY (gal.)
37K	31,000	43,000	279"	39' 4"	13' 4"	101"	84"	72	51/40	40/23
37L	31,000	43,000	279"	39' 4"	13' 4"	101"	84"	72	50/31	50
37M	31,000	43,000	279"	39' 4"	13' 4"	101"	84"	72	50/31	50

Meet your Jayco Dealer



Scan QR code for specification definitions

Some specs at the time of print may include estimates. For the most updated information, please visit [Jayco.com](http://Jayco.com)

Jayco Inc. | P.O. Box 460 | Middlebury, IN 46540

See dealer for further information and prices. All information in this brochure and on [www.jayco.com](http://www.jayco.com) is the latest available at the time of publication approval. Jayco reserves the right to make changes and to discontinue models without notice or obligation. Photography may show optional equipment or props used for decoration purposes only. RVs built for sale in Canada may differ to conform to Canadian codes. JAYCO and the JAYCO BIRD IN FLIGHT are registered trademarks of Jayco, Inc. Printed in USA 5/24 ©2024 Jayco, Inc. 2032961



Jayco - Part of Jayco Family of Companies