

Surveyor

by Forest River



FIND YOUR ADVENTURE.



STRONG, DURABLE LAMINATED FIBERGLASS WITH ALL ALUMINUM CAGE CONSTRUCTION



BIG THINGS COME IN SMALL PACKAGES

As with every series designed by Surveyor, a premium is placed on superior craftsmanship and unmatched value. By combining lightweight floor plans and efficient design, Surveyor delivers superior camping comfort.



191T
SLATE DECOR



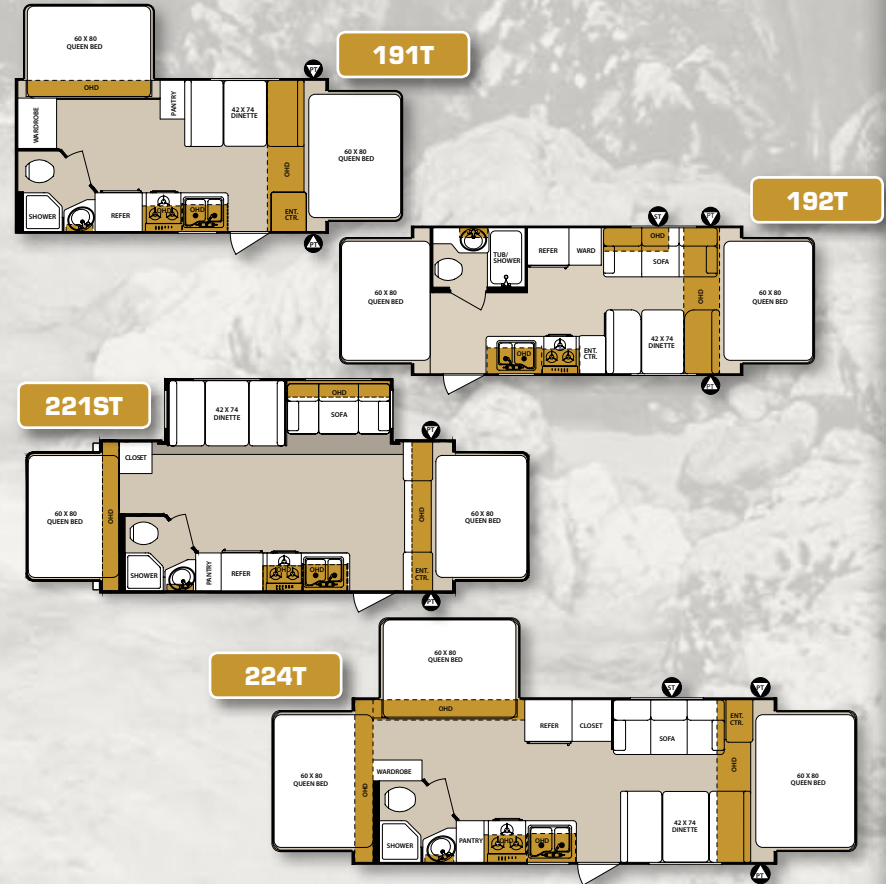
221ST
SLATE DECOR



EXPANDABLES

EXPANDABLE FLOORPLANS

ST=Storage PT=Pass Thru Storage OHD=Overhead Cabinet



EXPANDABLES SPECIFICATIONS*

| | 191T | 192T | 221ST | 224T |
|--------------------------------|--------|---------|--------|--------|
| UNLOADED VEHICLE WEIGHT | 3396 | 3680 | 4574 | 4026 |
| CARGO CARRYING CAPACITY | 1440 | 1692 | 2888 | 1390 |
| HITCH WEIGHT | 436 | 372 | 462 | 416 |
| OVERALL LENGTH | 20' 4" | 21' 11" | 22' 7" | 24' 7" |
| EXT. WIDTH | 8' 0" | 8' 0" | 8' 0" | 8' 0" |
| EXT. HEIGHT W A/C | 10' 5" | 10' 5" | 11' 0" | 10' 5" |
| FRESH WATER (GAL) | 46 | 46 | 46 | 46 |
| GREY WATER (GAL) | 40 | 40 | 40 | 40 |
| BLACK WATER (GAL) | 30 | 30 | 30 | 30 |
| AWNING SIZE | 11' | 9' | 15' | 15' |

* We know weights and dimensions are an important part of your buying decision. Please refer to the back page for specification definitions.

FINALLY IT'S YOUR TURN

Luxury is well within your reach in our extraordinary Surveyor travel trailers. Beautiful residential style kitchen cabinetry, spacious pantries, dinettes with storage, plus the large entertainment centers make this a great choice for affordable elegance.



33RLTS
SLATE DECOR



COUPLES COACHES

243RBS
LATTE DECOR

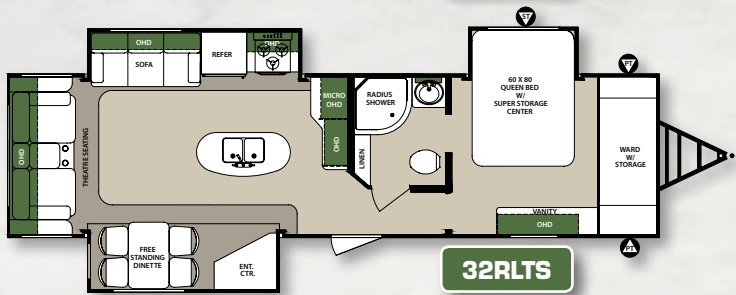
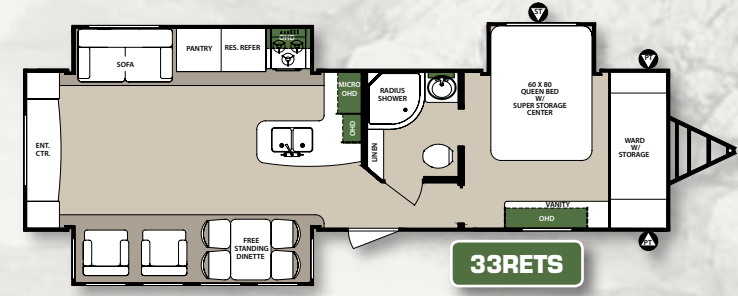
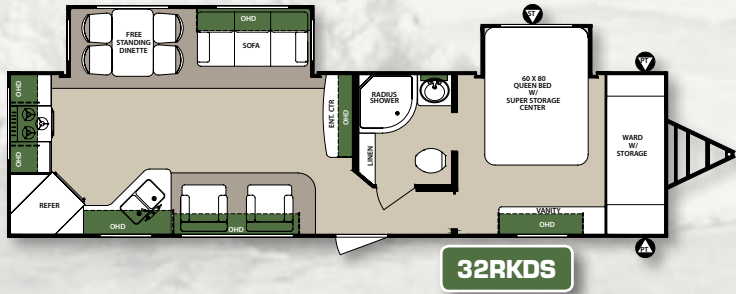
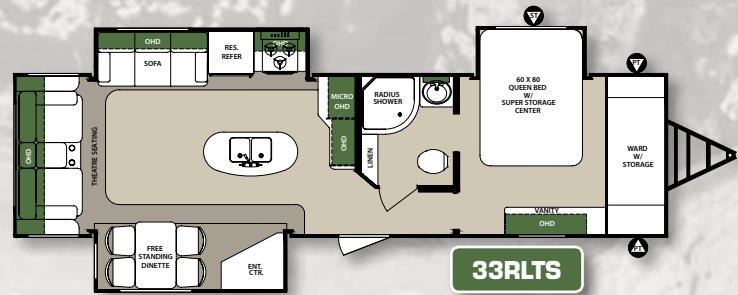
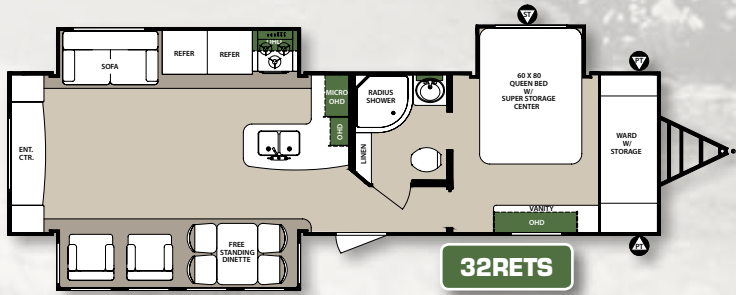


266RLDS
SEAGLASS DECOR



285IKDS
LATTE DECOR





COUPLES COACH SPECIFICATIONS*

| | 200MBLE | 201RBS | 220RBS | 226RBDs | 240RBS | 243RBS | 251RKs | 264RKs | 265RLDs | 266RLDs | 285IKDs | 32RETS | 32RKDs | 32RLTs | 33RLTs | 33RETS | 33RLOK |
|--------------------------------|---------|--------|---------|---------|--------|--------|--------|--------|---------|---------|---------|--------|--------|--------|--------|--------|--------|
| UNLOADED VEHICLE WEIGHT | 4601 | 4158 | 4367 | 5028 | 4801 | 5174 | 5721 | 4996 | 6036 | 6089 | 6392 | 7516 | 6774 | 7178 | 7186 | 7516 | TBD |
| CARGO CARRYING CAPACITY | 2879 | 1267 | 3119 | 2630 | 2821 | 2380 | 2047 | 2655 | 1726 | 1689 | 3121 | 2388 | 2875 | 2957 | 2888 | 2388 | TBD |
| HITCH WEIGHT | 480 | 425 | 486 | 658 | 622 | 554 | 768 | 651 | 762 | 778 | 713 | 1104 | 849 | 1335 | 1274 | 1104 | TBD |
| OVERALL LENGTH | 23' 8" | 24' 5" | 24' 11" | 25' 10" | 26' 9" | 27' 8" | 29' 6" | 29' 4" | 31' 3" | 31' 3" | 32' 7" | 36' 5" | 36' 5" | 36' 5" | 36' 5" | 36' 5" | TBD |
| EXT. WIDTH | 8' 0" | 8' 0" | 8' 0" | 8' 0" | 8' 0" | 8' 0" | 8' 0" | 8' 0" | 8' 0" | 8' 0" | 8' 0" | 8' 0" | 8' 0" | 8' 0" | 8' 0" | 8' 0" | 8' 0" |
| EXT. HEIGHT W A/C | 11' 0" | 10' 5" | 10' 5" | 11' 0" | 10' 5" | 11' 0" | 11' 2" | 10' 5" | 11' 2" | 11' 2" | 11' 3" | 11' 3" | 11' 3" | 11' 3" | 11' 3" | 11' 3" | TBD |
| FRESH WATER (GAL) | 46 | 46 | 46 | 46 | 46 | 46 | 46 | 46 | 46 | 46 | 46 | 46 | 46 | 46 | 46 | 46 | 46 |
| GREY WATER (GAL) | 40 | 40 | 40 | 40 | 40 | 40 | 60 | 60 | 40 | 40 | 75 | 75 | 75 | 70 | 70 | 75 | 75 |
| BLACK WATER (GAL) | 30 | 30 | 30 | 30 | 30 | 30 | 30 | 30 | 30 | 30 | 35 | 35 | 35 | 35 | 35 | 35 | 35 |
| AWNING SIZE | 13' | 13' | 14' | 17' | 12' | 11' | 20' | 20' | 17' | 17' | 18' | 20' | 18' | 21' | 21' | 20' | 20' |

* We know weights and dimensions are an important part of your buying decision. Please refer to the back page for specification definitions.

FAMILY TIME IS TIME WELL SPENT

Surveyor's selection of family coaches is sure to cover your family camping needs. From smaller light weight models to the largest with a triple slide, Surveyor has something to fit your family.



295QBLE
SEAGLASS DECOR



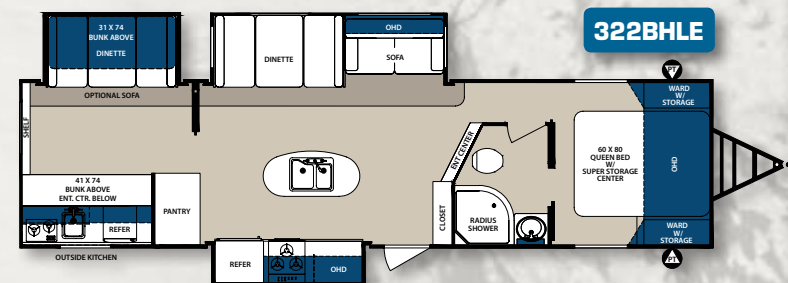
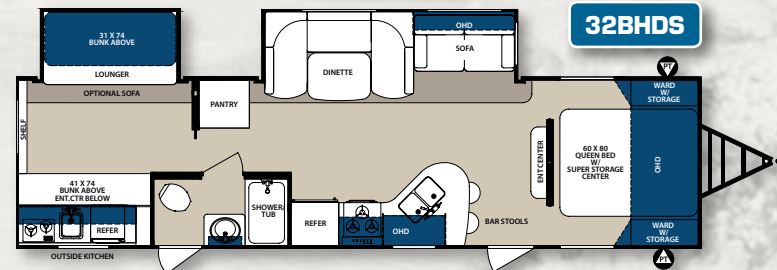
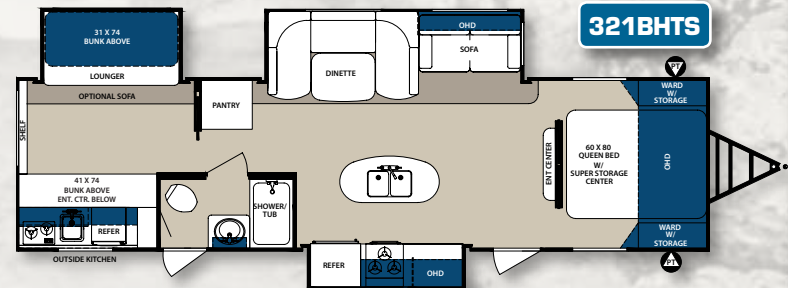
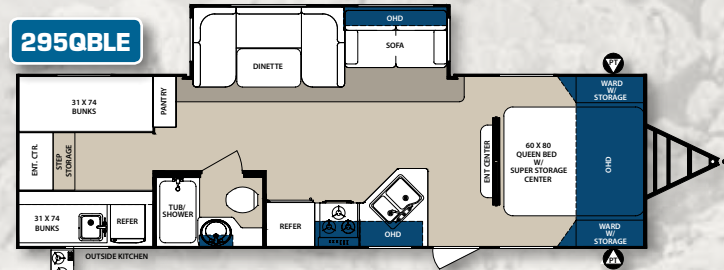
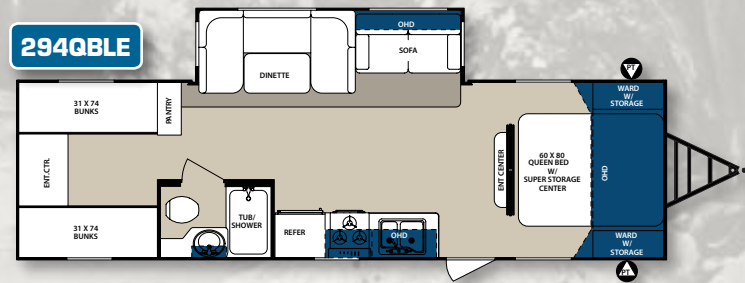
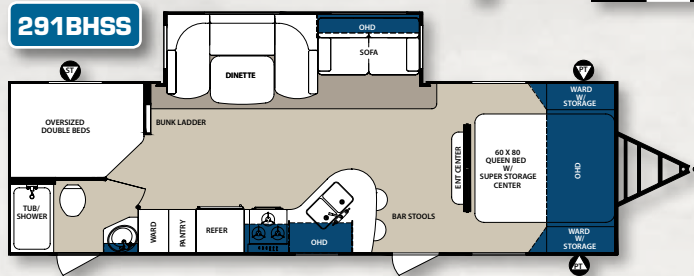
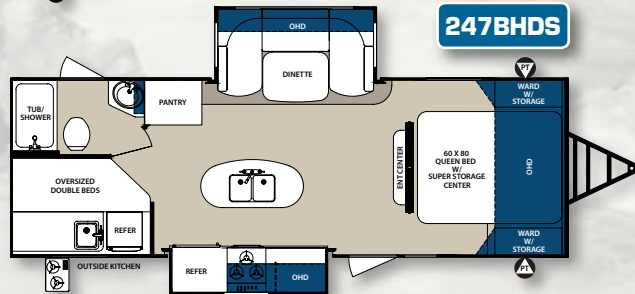
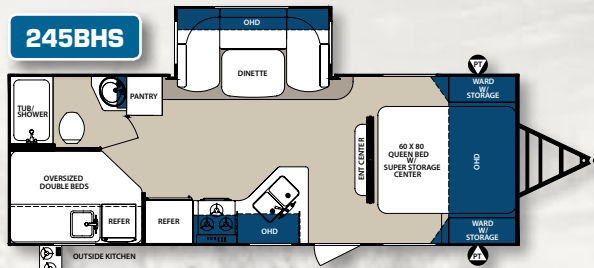
247BHDS
SEAGLASS DECOR



FAMILY COACHES

FAMILY COACH TRAVEL TRAILER FLOORPLANS

ST=Storage PT=Pass Thru Storage OHD=Overhead Cabinet



FAMILY COACH SPECIFICATIONS *

| | 245BHS | 247BHDS | 291BHSS | 294QBLE | 295QBLE | 321BHTS | 32BHDS | 322BHLE |
|--------------------------------|--------|---------|---------|---------|---------|---------|--------|---------|
| UNLOADED VEHICLE WEIGHT | 5204 | 5836 | 5896 | 5602 | 5995 | 7321 | 6904 | 7404 |
| CARGO CARRYING CAPACITY | 2422 | 1745 | 1848 | 2076 | 1782 | 2250 | 2630 | 2144 |
| HITCH WEIGHT | 626 | 581 | 744 | 678 | 777 | 771 | 734 | 748 |
| OVERALL LENGTH | 28' 3" | 29' 4" | 32' 7" | 33' 0" | 33' 0" | 36' 5" | 36' 6" | 37' 1" |
| EXT. WIDTH | 8' 0" | 8' 0" | 8' 0" | 8' 0" | 8' 0" | 8' 0" | 8' 0" | 8' 0" |
| EXT. HEIGHT W A/C | 11' 0" | 11' 3" | 11' 3" | 11' 2" | 11' 2" | 11' 5" | 11' 3" | 11' 5" |
| FRESH WATER (GAL) | 46 | 46 | 46 | 46 | 46 | 46 | 46 | 46 |
| GREY WATER (GAL) | 40 | 70 | 40 | 40 | 40 | 40 | 40 | 40 |
| BLACK WATER (GAL) | 30 | 30 | 30 | 30 | 30 | 30 | 30 | 30 |
| AWNING SIZE | 19' | 20' | 17' | 17' | 17' | 18' | 18' | 21' |

* We know weights and dimensions are an important part of your buying decision. Please refer to the back page for specification definitions.

HIGH END FEATURES, VALUE PRICE

Our handcrafted furniture is built in the USA with the features and quality you expect. Just a few of the high end items you'll find in every Surveyor fifth wheel include seamless kitchen countertops with under mount stainless steel sinks, recessed sink covers, 8 cu. ft. refrigerators and 22" ovens with recessed glass covers. Even the fireplace comes standard.



FIFTH WHEEL



299RLOK
LATTE DECOR

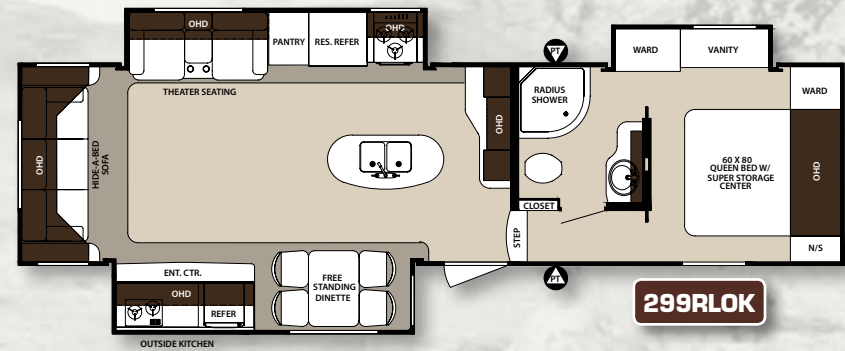
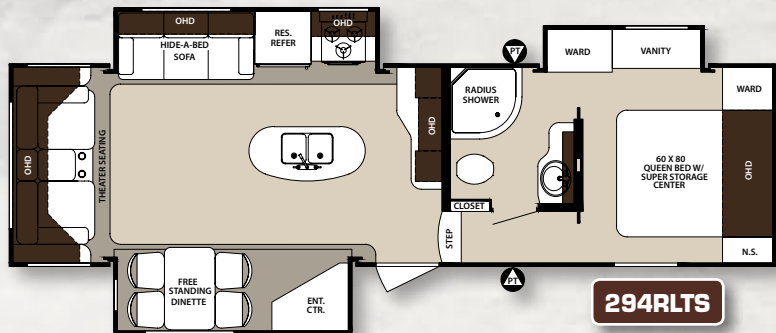
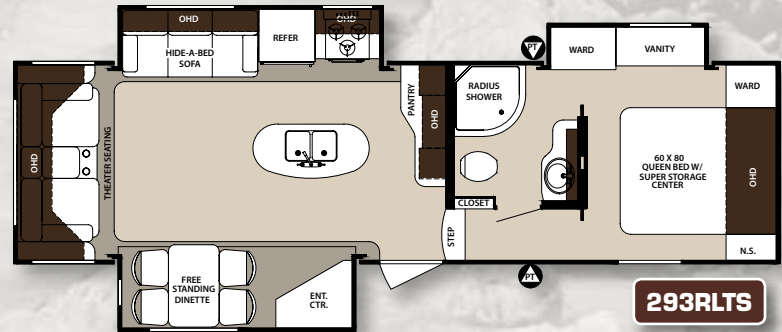
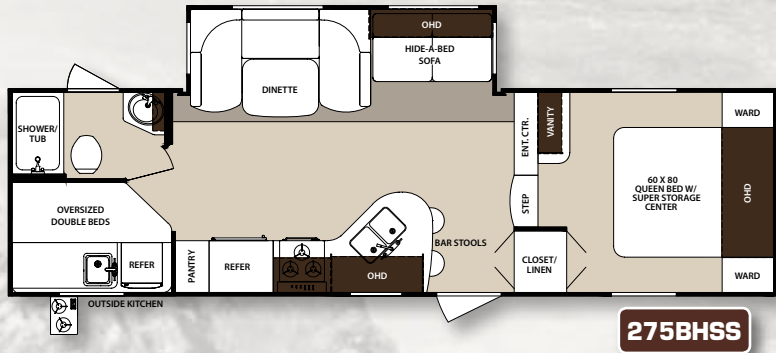


275BHSS
SLATE DECOR



FIFTH WHEEL FLOORPLANS

ST=Storage PT=Pass Thru Storage OHD=Overhead Cabinet



FIFTH WHEEL SPECIFICATIONS *

| | 275BHSS | 293RLTS | 294RLTS | 299RLOK |
|--------------------------------|---------|---------|---------|---------|
| UNLOADED VEHICLE WEIGHT | 7664 | 8472 | 8499 | 9038 |
| CARGO CARRYING CAPACITY | 2279 | 3613 | 3546 | 2860 |
| HITCH WEIGHT | 1143 | 1685 | 1645 | 1498 |
| OVERALL LENGTH | 32' 0" | 32' 9" | 32' 9" | 35' 2" |
| EXT. WIDTH | 8' 0" | 8' 0" | 8' 0" | 8' 0" |
| EXT. HEIGHT W A/C | 12' 5" | 12' 7" | 12' 5" | 12' 5" |
| FRESH WATER (GAL) | 47 | 47 | 47 | 47 |
| GREY WATER (GAL) | 75 | 75 | 75 | 75 |
| BLACK WATER (GAL) | 35 | 35 | 35 | 35 |
| AWNING SIZE | 20' | 20' | 20' | 20' |

* We know weights and dimensions are an important part of your buying decision. Please refer to the back page for specification definitions.

THE SURVEYOR ADVANTAGE

THE SURVEYOR ADVANTAGE



SUPERIOR CONSTRUCTION

SURVEYOR IS ONE OF THE STRONGEST LIGHT WEIGHT TRAILERS BECAUSE OF OUR ALUMINUM FRAMED OPENINGS AND LAMINATION PROCESS. HIGH QUALITY MATERIALS, 100% GLUE COVERAGE AND FULLY FRAMED ALUMINUM FLOOR, ROOF, WALLS, FRONT AND BACKS PROVIDE YOU A STRUCTURE FOR PEACE OF MIND. NOT FOUND IN MOST RV'S TODAY.



FRESH WATER

LIKE TO CARRY THIS MUCH FRESH WATER? YOU CAN NOW. SURVEYOR'S 46 GALLON FRESH WATER TANK ALLOWS YOU TO CAMP LONGER.



SIDEWALL

2-TONE GEL-COATED FIBERGLASS SIDE WALLS WITH PREMIUM GRAPHICS



FIFTH WHEEL GEL-COAT FIBERGLASS CAP



TRAVEL TRAILER GEL-COAT FIBERGLASS CAP



TRAVEL TRAILER FRONT BLACK DIAMOND PLATE PROTECTION



ALUMINUM WHEELS AND NITROGEN FILLED TIRES

(OPTIONAL ON EXPANDABLES AND LE MODELS).



MAGNETIC BAGGAGE DOOR CATCHES

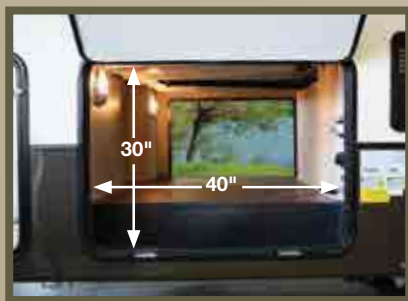


FRICTION HINGES ON ENTRANCE DOOR(S)



INTEGRATED LED AWNING LIGHT

THE INTEGRATED LED AWNING LIGHT PROVIDES YOU WITH AN ABUNDANCE OF LIGHT FOR ADDED SAFETY AND SECURITY.



LARGE EXTERIOR STORAGE DOORS

(FIFTH WHEEL SHOWN) GIVES YOU EVEN MORE ROOM WITH OUR 40" X 30" STORAGE DOOR AND OUR "Z" FRAME DESIGN, LARGEST STORAGE IN ITS CLASS.



CENTRALIZED UTILITY CENTER

(STANDARD ON FIFTH WHEELS).



50 AMP SERVICE AND FIREPLACE

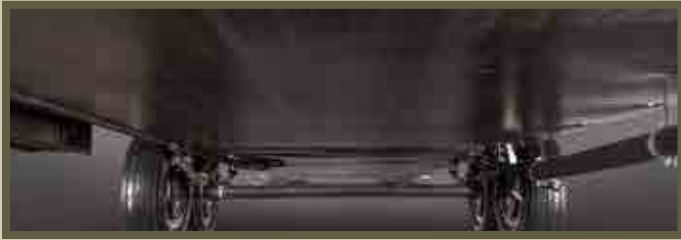
(STANDARD ON FIFTH WHEELS, OPTION ON TRAVEL TRAILERS, N/A EXPANDABLES AND LE MODELS).



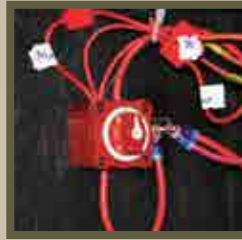
BIKE RACK

(STANDARD ON FIFTH WHEELS, OPTION ON TRAVEL TRAILERS, N/A EXPANDABLES AND LE MODELS).

THE SURVEYOR ADVANTAGE



ENCLOSED AND HEATED UNDERBELLY
(ALL MODELS ENCLOSED, HEATED ON TRAVEL TRAILERS 247BHDS AND UP AND ALL FIFTH WHEELS).



BATTERY DISCONNECT SWITCH
(STANDARD ON ALL FIFTH WHEELS)
THIS CONVENIENT SWITCH LETS YOU POWER DOWN ALL 12V.



BACK UP CAMERA PREP
(STANDARD TRAVEL TRAILERS AND FIFTH WHEELS, N/A/ EXPANDABLES AND LE MODELS).



82.5" INTERIOR HEIGHT (TRAVEL TRAILERS)
THE HIGHEST IN ITS CLASS. RADIUS ALUMINUM ROOF RAFTERS ON 16" CENTERS.



LED INTERIOR LIGHTS THROUGHOUT



STAINLESS STEEL APPLIANCES
JUST ONE OF THE MANY UPGRADES YOU'LL FIND IN SURVEYOR.



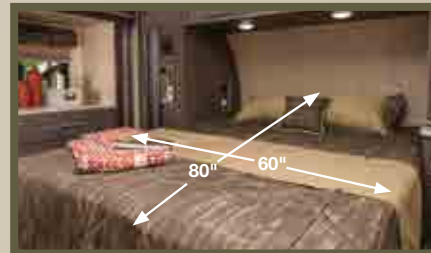
22" RECESSED STOVE WITH GLASS COVER
(MOST MODELS).



SEAMLESS KITCHEN COUNTERTOPS
WITH UNDERMOUNT STAINLESS STEEL SINKS AND RECESSED COVER



SHAKER STYLE TWO TONE WOOD CABINETS
WITH CONCEALED HINGES, LARGE HANDLE PULLS AND FULL EXTENSION DRAWER GUIDES



60" X 80" RESIDENTIAL SIZE QUEEN BED
(OPTIONAL SERTA™ PILLOW TOP MATTRESS WITH 3" "KOOL" COMFORT MEMORY FOAM).



RESIDENTIAL STYLE WOOD LIVING ROOM BLINDS



BEDROOM NIGHT SHADES



RESIDENTIAL CURTAIN RODS



DYSON CORDLESS VACUUM
(FIFTH WHEEL ONLY).



DECORS



SEAGLASS



SLATE



LATTE

EXTERIOR

| | EXPANDABLES & LE | TRAVEL TRAILERS | FIFTH WHEELS |
|--|------------------|-----------------|--------------|
| Gel-Coated Fiberglass Exterior | X | X | X |
| Premier Exterior Graphics | X | X | X |
| Spare Tire & Carrier | X | X | X |
| Nitrogen Filled Tires | X | X | X |
| Double Entry Steps (Select Models) | X | X | N/A |
| Triple Entry Steps (Select Models) | X | X | X |
| Fully Enclosed Underbelly | X | X | X |
| Heated & Enclosed Underbelly (Model Specific) | X | X | X |
| Extended Drip Rail & Down Spout | X | X | X |
| Dual Battery Rack | X | X | X |
| 4" Square Bumper w/Sewer Hose Storage | X | X | X |
| Combination Entrance/Screen Door & Dead Bolt Locks | X | X | X |
| Large Radius Corner Windows | X | X | X |
| Extra Large Pass-Thru Storage (Model Specific) | X | X | X |
| Flush Mount Outside Storage Compartments w/Rubber D-Seal | X | X | X |
| Butyl Tape Sealant on Seams | X | X | X |

INTERIOR

| | | | |
|--|-----|---|-----|
| 82 1/2" Interior Height | X | X | N/A |
| Large Panoramic Windows | X | X | X |
| Seamless Kitchen Countertops | N/A | X | X |
| Under Mount Stainless Steel Double Bowl Sink | N/A | X | X |
| Recessed Sink Cover | N/A | X | X |
| High Rise Kitchen Faucet with Pullout Sprayer | N/A | X | X |
| Knife Block Behind Stove | X | X | X |
| Designer Carefree® Flooring | X | X | X |
| Shaw® Stain and Soil Resistant Carpet (Where Applicable) | X | X | X |
| In-floor Ducted Heating (Where Applicable) | X | X | X |
| Shaker Style Cabinets w/Concealed Hinges | X | X | X |
| Solid Lumber Core Cabinet Fronts Assembled w/Screws | X | X | X |
| Screwed & Glued Cabinetry | X | X | X |
| Residential Wood Drawers w/Ball Bearing Glides | X | X | X |
| Adjustable Shelves in Pantry (Where Applicable) | X | X | X |
| LED Interior Lights | X | X | X |
| Ceiling Light switch at Entrance Door | X | X | X |
| Wall Mounted Control Panel | X | X | X |
| Vented Side Windows in Slide Outs | X | X | X |
| Residential Wood Blinds (Living Room) | N/A | X | X |

BATH

| | | | |
|-----------------------------------|---|---|---|
| Fiberglass Tub/Shower | X | X | X |
| Adjustable Shower Head/Faucet | X | X | X |
| Lavatory Sink and Faucet | X | X | X |
| Wood Medicine Cabinet with Mirror | X | X | X |
| Theftford Commode with Foot Flush | X | X | X |
| Skylight over Tub/Shower | X | X | X |
| Systems Monitor Panel | X | X | X |
| 12V Power Exhaust Fan | X | X | X |

BEDROOM

| | | | |
|--------------------------------------|---------|---|---|
| Surveyor Royal Suite | LE ONLY | X | X |
| 60" x 80" Residential Size Queen Bed | X | X | X |
| 80# Gas Struts | N/A | X | X |
| 4 Overhead Cabinet Doors | LE ONLY | X | X |
| 4 Drawers | LE ONLY | X | X |
| 2 Cubby Storage Areas | LE ONLY | X | X |
| Solid Bedroom Privacy Doors | LE ONLY | X | X |
| Night Shades (More Privacy) | LE ONLY | X | X |

APPLIANCES/EQUIPMENT

| | EXPANDABLES & LE | TRAVEL TRAILERS | FIFTH WHEELS |
|---|------------------|-----------------|--------------|
| 13.5K Air Conditioning (Ducted All Models) | X | X | N/A |
| 15K Air Conditioning (Ducted All Models) | O | O | X |
| (LE ONLY) | | | |
| 20,000 BTU Furnace (All Expandables, 200MBLE, 201RBS & 226RBDs) | X | X | N/A |
| 20,000 BTU Ducted Furnace (220RBS, 240RBS, 243RBS & 245BHS) | X | X | N/A |
| 30,000 BTU Ducted Furnace (245BHDS & Above) | X | X | X |
| Digital Wall Thermostat | X | X | X |
| 6 Gallon G/E DSI Hot Water Heater w/Quick Recovery | X | X | X |
| Stainless Steel Appliances | X | X | X |
| Dometic G/E Flush Mount Refrigerator | X | X | X |
| Residential House Type Refrigerator (Select Models) | N/A | X | X |
| Three Burner Range Top | X | X | X |
| 17" Gas Oven with Piezo Ignition (Where Applicable) | X | X | N/A |
| 22" Gas Oven with Piezo Ignition (Where Applicable) | N/A | X | X |
| Power Range Hood w/Light | X | X | X |
| Microwave Oven | X | X | X |
| Stereo CD/DVD with USB, Bluetooth and Remote Control | X | X | X |
| 12V FM Stereo Sound Bar w/Bluetooth/Surround Sound and 4 Zone Speaker | N/A | X | X |
| Sony CD/DVD Player | N/A | X | X |
| Omni Directional TV Antenna | X | X | X |

CONSTRUCTION

| | | | |
|---|-----|---|-----|
| Full Aluminum Cage Construction (All Openings) | X | X | X |
| 3/8" Roof Decking (Fully Walk on Roof) | X | X | X |
| Barreled Roof with Aluminum Trusses | | | |
| 16" on Center (82 1/2" of Headroom)(R14) | X | X | N/A |
| 1 1/2" Laminated Sidewalls (R7) (Select Models) | X | X | N/A |
| 2" Laminated Sidewalls (R9) (Select Models) | N/A | X | X |
| 2" Laminated Floor (R9) | X | X | X |
| Enclosed Underbelly | X | X | X |
| Heated and Enclosed Underbelly (Model Specific) | N/A | X | X |
| Central Air Conditioning | X | X | X |

ELECTRICAL

| | | | |
|--|---------|-----|-----|
| Detachable 30AMP Power Cord | X | X | N/A |
| Detachable 50AMP Power Cord | N/A | O | X |
| 55AMP Converter w/Charger | X | X | X |
| Cable and Satellite Ready | X | X | X |
| Utility Center | N/A | N/A | X |
| Patio Light w/Amber Lens | X | X | X |
| Hitch Light | X | X | X |
| LED Docking Lights | LE ONLY | X | X |
| LED Pass-Thru Storage Light | N/A | X | X |
| 120V Exterior Recept Door Side | X | X | X |
| Cable Connection Door Side | X | X | X |
| Exterior TV Bracket Door Side | N/A | X | X |
| LED Flush Mount Ultra Bright Interior Lights | X | X | X |

PLUMBING

| | | | |
|---------------------------------------|---|---|---|
| Color Coded "Pex" Water Lines | X | X | X |
| Water Heater Bypass Kit | X | X | X |
| Winterization Kit | X | X | X |
| Outside Shower | X | X | X |
| Black Tank Flush | X | X | X |
| City Water Fill | X | X | X |
| Gravity Water Fill | X | X | X |
| 12V Demand Water Pump | X | X | X |
| Rotocast Fresh Water Tank(Underfloor) | X | X | X |
| Rotocast Grey/Black Tank (Underfloor) | X | X | X |

EXPANDABLES & LE

TRAVEL TRAILERS

FIFTH WHEELS

EXPANDABLES & LE

TRAVEL TRAILERS

FIFTH WHEELS

RUNNING GEAR

| | | | |
|--|-----------|-----|-----|
| Tough Powder Coated Frame | X | X | X |
| Nev-R-Adjust® Electric Brakes | X | X | X |
| Leaf Spring Suspension | X | X | X |
| Super Lube Hubs | X | X | X |
| Galvanized Steel Wheel Wells | X | X | X |
| 2 5/16" Coupler | X | X | N/A |
| Radial Trailer Tires | X | X | X |
| Nitrogen Filled Tires | X | X | X |
| 205/75R14C Tires (Model Specific) | X | X | N/A |
| 225/75R15D Tires (Model Specific) | 191T ONLY | X | X |
| 235/80R16E Tires (Model Specific) | N/A | N/A | X |
| Automatic Flip Foot Jack (Expandables and LE Models) | X | N/A | N/A |
| 3.0 Ground Control 4 Point Leveling System (Fifth Wheels) | N/A | N/A | CFP |

SAFETY AND SECURITY

| | | | |
|--|---|---|-----|
| Fire Extinguisher | X | X | X |
| Smoke Detector | X | X | X |
| LP Leak Detector | X | X | X |
| Carbon Monoxide Detector | X | X | X |
| Ground Fault Electrical Circuits(s) | X | X | X |
| Dead Bolt Door Lock | X | X | X |
| Brake-Away Switch | X | X | X |
| Heavy Duty Safety Chains (Travel Trailers) | X | X | N/A |
| Electric Brakes (All Wheels) | X | X | X |
| Tinted Safety Glass Windows | X | X | X |
| Hitch Light | X | X | X |

EXPANDABLES BEDS

| | | | |
|--|---|-----|-----|
| Attached Vinyl Weathershield Tent(s) | X | N/A | N/A |
| Automotive Rubber Gasket and Compression Locks | X | N/A | N/A |
| Radius Door w/Hinge | X | N/A | N/A |
| 1000lb Capacity | X | N/A | N/A |
| Quilted Bed Cushion(s) | X | N/A | N/A |

SURVEYOR OPTIONS

| | | | |
|--|-----|-----|-----|
| 15K Air Conditioner IPO 13.5K (Select Models) (LE ONLY) | O | O | X |
| 13.5K Air Conditioner in Bedroom (Select Models) (Requires 50AMP Service) | N/A | O | O |
| 50AMP Service & Prep for 2nd A/C in Bedroom | N/A | O | O |
| Electric Fireplace (Select Models) (Requires 50 AMP Service) | N/A | O | X |
| 39" LED TV IPO 32" | N/A | O | X |
| Fantastic Fan | N/A | O | O |
| Hide-A-Bed Sofa (Select Models) | N/A | O | X |
| Serta 60X80 Queen Pillow Top Mattress w/3" "Kool" Comfort Memory Foam | N/A | O | O |
| Wood Planked Vinyl Flooring | O | O | O |
| Electric Stabilizer Jacks (Select Models) | N/A | O | X |
| Equa-Flex Suspension | N/A | O | O |
| Flip Down Bike/Utility Rack | N/A | O | X |
| Roof Ladder | N/A | O | O |
| Arctic Package (Tank Pad Heaters) | N/A | O | O |
| Small Slide Out Topper (Model Specific) | O | O | O |
| Large Slide Out Topper (Model Specific) | O | O | O |
| Stove & Sink Cover | O | CFP | CFP |
| Heated Mattress | O | N/A | N/A |
| Aluminum Wheels | O | CFP | CFP |
| Power Tongue Jack | O | CFP | N/A |
| Large Folding Assist Handle | O | X | X |

X = STANDARD EQUIPMENT O = OPTIONAL CFP = CAMPER FRIENDLY PACKAGE

SURVEYOR WARRANTY INFORMATION For Details on Surveyor's complete warranty program, see your Surveyor dealer. Surveyor offers the following additional limited warranties to the original purchasers. Consult written warranty for details.

PACKAGES**EXPANDABLES & LE****INTERIOR LUXURY PACKAGE**

- 82 1/2" Barreled Ceiling
- Ducted Air Conditioning w/Adjustable Vents
- Jensen AM/FM/CD/DVD Stereo w/Remote
- Shaker Style Cabinet Doors w/Hidden Hinges
- Stainless Steel Appliances
- Dometic 2-Door Refrigerator w/Stainless Fronts
- Skylight Over Tub/Shower
- 60" X 80" Queen Beds
- LED Interior Lights
- Designer Carefree Linoleum
- High Rise Goose Neck Faucet
- Night Shades (Living Room & Bedroom)

EXTERIOR LUXURY PACKAGE

- Electric Awning w/LED Light Bar
- Friction Hinges on Entrance Door
- Magnetic Baggage Door Catches
- Automatic Flip Foot on Tongue Jack
- Detachable Power Cord
- XTRM™ Ply Roofing System
- Outside Stereo Speakers
- Outside Shower
- Black Front Diamond Plate
- Black Tank Flush
- Fully Enclosed Underbelly
- Large Holding Tanks 46 gal Fresh/40 gal Grey

TRAVEL TRAILERS**CAMPER FRIENDLY PACKAGE**

- Front Fiberglass Cap
- Aluminum Wheels
- Power Tongue Jack
- Black Diamond Plate
- Magnetic Baggage Door Catches
- Friction Hinges on Entrance Door(s)
- Back Up Camera Prep
- Recessed Stove w/Glass Cover

- LED Interior Lighting
- Seamless Kitchen Countertops
w/Under Mount Stainless Steel Sink
- Recessed Sink Cover
- Seamless Dinette Table
- EZ Glide Dinette Table
- EZ Glide Dinette Drawers
- XTRM™ Ply Roofing System

INTERIOR LUXURY PACKAGE

- 82 1/2" Barreled Ceiling
- High Rise Goose neck Faucet w/Sprayer
- Jensen 32" LED TV (50" 33RLOK)
- Bluetooth Stereo W/Remote & Sony CD/DVD Player
- 12V 4 Zone Premium Sound Bar w/Surround Sound
- Shaker Style Cabinet Doors w/Hidden Hinges
- Stainless Steel Appliances
- Vented Side Windows in Slide Out
- 6 Gallon Gas/Electric DSI Hot Water Heater w/Quick Recovery
- Wood Blinds in Living Room
- 60" X 80" Residential Size Queen Bed
- Designer Carefree Linoleum

EXTERIOR LUXURY PACKAGE

- Electric Awning w/LED Light Bar
- 2 - 20lb LP Bottles & ABS Hard Cover
- Detachable Power Cord
- Large Folding Assist Handle
- Outside Shower
- Black Tank Flush
- Fully Enclosed Underbelly
- Outside Stereo Speakers
- Exterior TV Bracket
- Cable Ready
- Satellite Ready
- Large Holding Tanks 46 gal Fresh/40 gal Grey

FIFTH WHEELS**CAMPER FRIENDLY PACKAGE**

- 50AMP Service & Prep For 2nd A/C
- Ground Control 3.0 4 Point Leveling System
- 16" Tires & Wheels (N/A 275BHSS)
- Back Up Camera Prep
- Magnetic Baggage Door Catches
- Friction Hinges on Entrance Door
- Dyson Cordless Vacuum

- Recessed Stove W/Glass Cover
- LED Interior Lighting
- Seamless Kitchen Countertops
with Under Mount Stainless Steel Sink
- Recessed Sink Cover
- Fold Down Bike/Utility Rack
- XTRM™ Ply Roofing System

INTERIOR LUXURY PACKAGE

- Electric Fireplace
- High Rise Goose Neck Faucet w/Sprayer
- Jensen 39" LED TV
- Jensen 50" LED TV (299RLOK Only)
- Bluetooth Stereo w/Remote & Sony CD/DVD Player
- 12V 4 Zone Premium Sound Bar w/Surround Sound
- Shaker Style Cabinet Doors w/Hidden Hinges
- Stainless Steel Appliances
- Vented Side Windows in Slide Out
- 6 Gallon Gas/Electric DSI Hot Water Heater w/Quick Recovery
- Wood Blinds in Living Room
- 60" X 80" Residential Size Queen Bed
- Designer Carefree Linoleum

EXTERIOR LUXURY PACKAGE

- 15K Air Conditioner
- Electric Awning w/LED Light Bar
- Exterior TV Bracket
- Detachable Power Cord
- Cable & Satellite Ready
- Outside Shower
- Black Tank Flush
- 12V Battery Disconnect Switch
- Outside Stereo Speakers
- Slam Latch Baggage Doors
- Built-in Utility Center
- Large Folding Assist Handle

Surveyor

by Forest River



24/7 EMERGENCY ROADSIDE ASSISTANCE

For a worry-free ownership experience Forest River includes one year of Coach-Net RV Technical & Roadside Assistance with each RV purchase. Whether new to the RV lifestyle or an experienced RV enthusiast, Forest River owners have 24/7 access to technical, operational and emergency road service coverage throughout the US & Canada. Coach-Net's fast, dependable service is just a phone call away.

Coach-Net®

RV Technical & Roadside Assistance

Whether new to the RV lifestyle or an experienced RV enthusiast, Forest River owners have 24/7 access to technical, operational and emergency road service coverage throughout the US & Canada. Coach-Net's fast, dependable service is just a phone call away.



PRE-DELIVERY INSPECTION FACILITY

20,000 square feet of quality assurance. The bare essentials for a premium product. This state-of-the-art facility gives immediate daily feedback to production for quality assurance in every unit built.

FREE MEMBERSHIP

to Forest River Owners' Group

www.forestriverfrog.com



Forest River, Inc. encourages our customers to purchase their Forest River products from a local dealership whenever possible for the following reasons:

- 1) Forest River, Inc. dealers are independently owned and operated businesses so priority service and scheduling is at their discretion and is often provided to customers that purchased their unit at that dealership.
- 2) Purchasing locally allows customers to establish meaningful relationships with a dealer, enhancing the RV experience through assistance with product questions, user tips or RV regulations for your state or country, and much more!
- 3) Canadian customers must meet requirements to bring an RV purchased out of the country to their home. These requirements may involve additional inspections and certifications, taxes and fees. Your local Canadian Dealer is a professional at meeting these requirements.
- 4) Scheduling timely warranty repairs and adjustments through a local dealership provides far greater flexibility and convenience to you, the customer!

It is the goal of Forest River, Inc. that all of our RV owners fully enjoy the RV experience and that customer satisfaction meets or exceeds their expectations!

GVWR (Gross Vehicle Weight Rating) - is the maximum permissible weight of the unit when fully loaded. It includes all weights, inclusive of all fluids, cargo, optional equipment and accessories. For safety and product performance do NOT exceed the GVWR.

GAWR (Gross Axle Weight Rating) - is the maximum permissible weight, including cargo, fluids, optional equipment and accessories that can be safely supported by a combination of all axles.

UVW (Unloaded Vehicle Weight)* - is the typical weight of the unit as manufactured at the factory. It includes all weight at the unit's axle(s) and tongue or pin and LP Gas. The UVW does not include cargo, fresh potable water, additional optional equipment or dealer installed accessories.

*Estimated Average based on standard build optional equipment.

CCC (Cargo Carrying Capacity)** - is the amount of weight available for fresh potable water, cargo, additional optional equipment and accessories. CCC is equal to GVWR minus UVW. Available CCC should accommodate fresh potable water (8.3 lbs per gallon). Before filling the fresh water tank, empty the black and gray tanks to provide for more cargo capacity.

** Estimated average based on standard build optional equipment.

Each Forest River RV is weighed at the manufacturing facility prior to shipping. A label identifying the unloaded vehicle weight of the actual unit and the cargo carrying capacity is applied to every Forest River RV prior to leaving our facilities. The load capacity of your unit is designated by weight, not by volume, so you cannot necessarily use all available space when loading your unit.



Learn More

Scan this barcode using a QR Reader on your smart phone to learn more about Forest River.



A Berkshire Hathaway company.

Surveyor Division
Forest River, Inc.
2405 Century Dr.
Goshen, IN 46528
(574) 642.3119

www.forestriverinc.com/surveyor
www.forestriveraccessories.com

Your Local Surveyor Dealer

All information contained in this brochure is believed to be accurate at the time of publication. However, during the model year, it may be necessary to make revisions and Forest River, Inc. reserves the right to make all such changes without notice, including prices, colors, materials, equipment and specifications as well as the addition of new models and the discontinuance of models shown in this brochure. Therefore, please consult with your Forest River dealer and confirm the existence of any materials, design or specifications that are material to your purchase decision. 12/15

©Copyright 2015 Forest River Inc - All Rights Reserved.