

VOLTAGE



TOY HAULERS BY



Dutchmen

Legendary Innovation. Trailblazing Value.

INCLUDING
TRITON
BY VOLTAGE

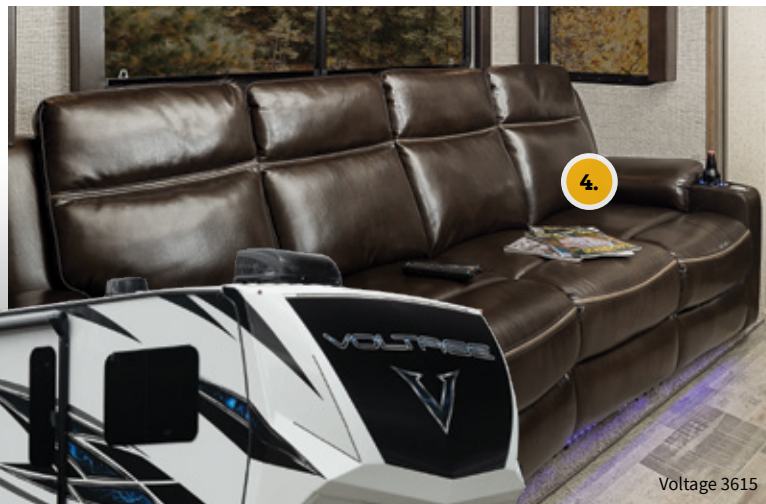


VOLTAGE

NOT ALL TOY HAULERS ARE CREATED EQUAL.

The Voltage lineup

offers more luxury, more durability, and more standard amenities than you ever imagined possible in a luxury toy hauler. From the exclusive Polar Breeze A/C system to the iN-Command remote access panel, Zero-G ramp door, luxurious living areas, and master bedrooms with king-size beds, the Voltage checks every box you demand in a toy hauler.



WELCOME HOME FULL-FEATURE RV LIVING



Standard in Every Voltage



Sleeps up to 10



One-touch auto leveling



iN-Command System



Prepped WIFI W/ 4G LTE

1. OVERSIZED CONVECTION MICROWAVE
2. KING BED
3. SOLID-SURFACE COUNTERTOPS
4. RECLINING SOFA
5. 18 CU. FT. REFRIGERATOR



Voltage 3615



Voltage 3615

THE ULTIMATE TOY BOX



Living in Luxury

The Voltage has raised the stakes for toy hauler manufacturers everywhere with premium amenities like a Polar Breeze A/C system, iN-Command central control panel, industry-leading slide-out heights, and Zero-G ramp door. Plus, owners get an industry-first, zero stack up patio system.



VOLTAGE

The Voltage Series,
Where Extreme Never
Skips a Generation.



Voltage Premium Features



Zero-G Ramp Door

If a Zero-G ramp door sounds impressive, it's because it is. These large, rear ramp doors let you access your garage with little to no effort. Which means, you can leave the heavy lifting to your extreme toys.



POWERFUL
MOBILE APP
AVAILABLE

Central Command System

The complete central interior command system makes handling your RV's electrical components a breeze. An easy-to-use touchscreen gives you access to all of your essential features from one convenient location, including: lights, generator, tank levels, climate systems, and more.



7' Tall Slide-out Height

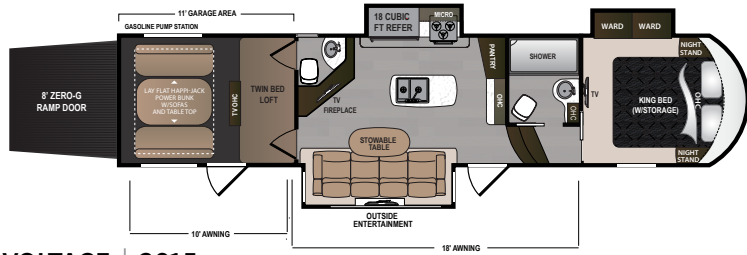
When it comes to the Voltage, slide-outs don't just offer more width; these toy haulers deliver even more interior height. So, say goodbye to the days of feeling cooped up in your RV with industry-leading 7' tall slide-out ceiling heights, standard.



Industry-first Zero-Stack Patio Deck System

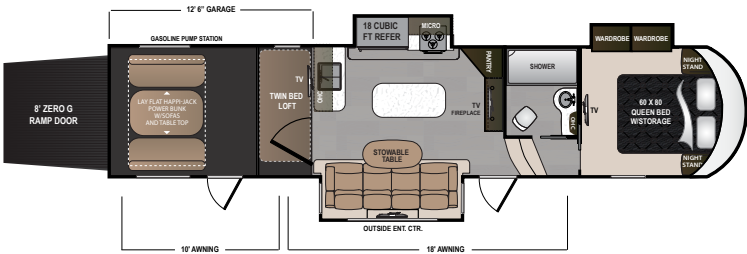
In addition to a mountain of extreme features, the Voltage also delivers outdoor enthusiasts with an industry-first patio system (with zero stack up). Now, you can spend even more time under the sun and stars without ever having to hit the dirt. Plus, you'll be the talk of the tailgating community.

Voltage Floorplans



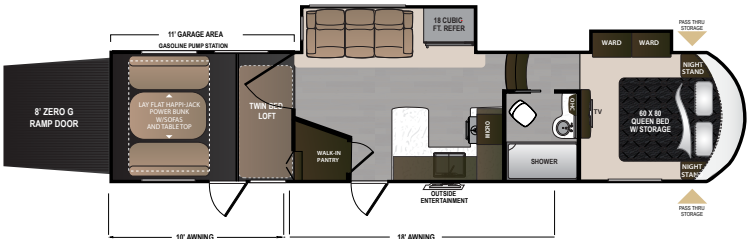
VOLTAGE | 3615

Ext. Length: **38' 11"** Ext. Height: **13' 3"** Weight: **13,745 lbs.** Sleeps: **5-7**



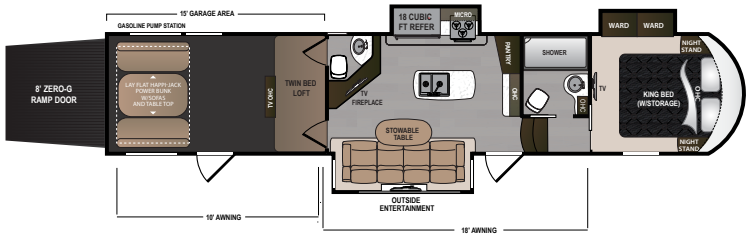
VOLTAGE | 3655

Ext. Length: **39' 4"** Ext. Height: **13' 4"** Weight: **13,464 lbs.** Sleeps: **5-7**



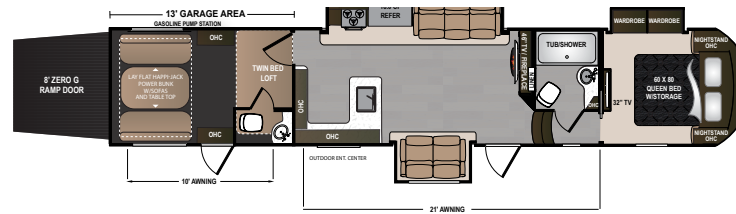
VOLTAGE | 3705

Ext. Length: **39' 0"** Ext. Height: **13' 3"** Weight: **13,113 lbs.** Sleeps: **5-7**



VOLTAGE | 3915

Ext. Length: **42' 11"** Ext. Height: **13' 3"** Weight: **14,876 lbs.** Sleeps: **5-7**



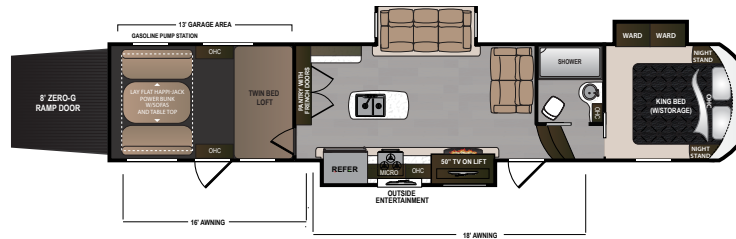
VOLTAGE | 4115

Ext. Length: **43' 10"** Ext. Height: **13' 3"** Weight: **15,456 lbs.** Sleeps: **5-7**



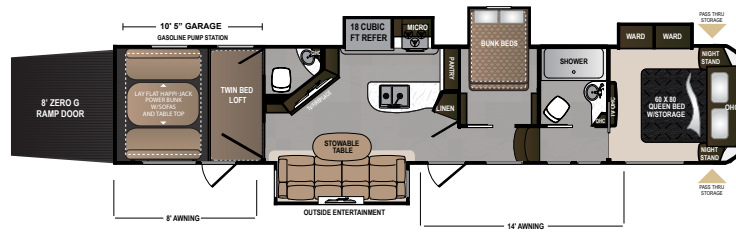
VOLTAGE | 4145

Ext. Length: **TBD** Ext. Height: **TBD** Weight: **TBD** Sleeps: **TBD**



VOLTAGE | 4185

Ext. Length: **44' 5"** Ext. Height: **13' 3"** Weight: **15,983 lbs.** Sleeps: **5-7**



VOLTAGE | 4205

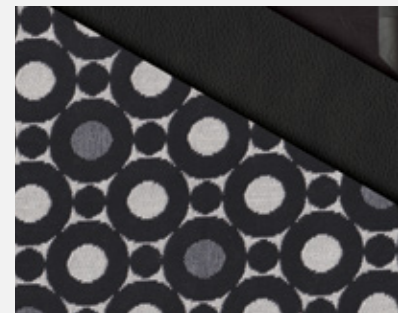
Ext. Length: **43' 9"** Ext. Height: **13' 4"** Weight: **15,983 lbs.** Sleeps: **8-10**

Interior Décor

HAZEL



RAVEN



DISCLAIMER: Product information is as accurate as possible as of the brochure publication date. All features, floorplans and specifications in this brochure are subject to change without notice. Please consult Dutchmen's website at www.Dutchmen.com for current product information and specifications. Tow Vehicle Disclaimer. **CAUTION:** Owners of Dutchmen recreational vehicles are solely responsible for the selection and proper use of tow vehicles. All customers should consult with a motor vehicle manufacturer or their dealer concerning the purchase and use of suitable tow vehicles for Dutchmen products. Dutchmen disclaims any liability or damages suffered as a result of the selection, operation, use or misuse of a tow vehicle. DUTCHMEN'S LIMITED WARRANTY DOES NOT COVER DAMAGE TO THE RECREATIONAL VEHICLE OR THE TOW VEHICLE AS A RESULT OF THE SELECTION, OPERATION, USE OR MISUSE OF THE TOW VEHICLE. REFERENCE DUTCHMEN MANUFACTURING OWNERS MANUAL FOR LIMITED WARRANTY DETAILS.

Voltage Standards and Options

MANDATORY OPTIONS

Voltage Luxury Interior Package
Generator Prep
Central Vacuum System w/Tools and Dust Pan
HappiJac Bed w/Roll Over Sofa System with Table
Outside Entertainment Center
Voltage Exterior Package
Nitro Fill (Nitrogen Filled) Radial Tires
iN-Command Operating System
MORryde CRE 3000 Suspension

VOLTAGE LUXURY INTERIOR PACKAGE

12" Diamond Plate Along Garage Wall
Metal Ram Air Vents
Television in Garage
50" LCD HD Television in Living Area
Upgraded Beaufloor Linoleum
Heated and Messaging Residential Sofas
Roller Shades Throughout Entire Living Area
Oversized Convection Microwave
3 Burner Range with 21" Oven

Solid-Surface Counters in Kitchen
Stainless-Steel Farmers Sink in Kitchen
Hardwood Cabinet Doors
Insulated Heat and A/C Ducts
King Bed
USB Charging Stations by Night Stands
2,500-lb Tie Downs Secured to the Frame
Tuff Ply Flooring in Garage
Lay Flat HappiJac Sofas with Electric Top Bed
Polk Power Stereo in Garage and Living Area
Upgraded Jensen Stereo
Pressed Wood Steps to Upper Deck
Fireplace with Surround
18 cu. ft. Gas and Electric Refrigerator
Range Hood with Fan and LED Light
Rollup Sink Covers
Residential Kitchen Faucet
Pendant Lighting
Cable and Satellite Prep at All TV Locations
Residential Duvet Cover
Polar Breeze A/C System

10-Gallon Gas Electric Water Heater w/DSI and 19.7 gal/hour Recovery Rate

VOLTAGE EXTERIOR PACKAGE

All-Weather Package with Additional Insulation
Dedicated Heat Ducts for Underbelly
16" Custom Wheels
50-Amp Service with Cord and Indicator Light
7,040-lb Load Range F-Rated Tires per Axle
Fold Down Roof Ladder
30-Gallon Fuel Tank to Supply Generator
Full Sized Spare Tire with Carrier
Roof Top Solar Prep
Back Up Camera Prep
Upgraded Graphics with 3-Year Warranty
Zero-Gravity Ramp Door
12-Volt Heated Tank Pads with Interior Switches
1" Insulated Slam Latch Baggage Doors
2nd Power Awning Over Garage Entry Door
7,000-lb Axles with Ultra Lube
Exterior Convenience Center with Utility Connections
Frameless Tinted Safety Glass Windows

20-Gallon Fuel Station
Fully Walkable Roof
Large Electric Adjustable Awnings with LED Lights
TPO Roof with 12-Year Warranty
Water Heater Bypass
Rota-Flex Pin Box
Solid Step Main Entry
Prepped for Dual Batteries

GENERATOR

Onan 5.5-KW Gas Generator

OPTIONS

Full Body Paint Black And Red
Full Body Paint Black And Blue
Three Season Patio Doors IPO Pull Down Screen

CODES & SEALS

RVIA Seal
State Seal (Where Applicable)
CSA Construction And Seal

Voltage Specifications

FLOORPLAN	DIMENSIONS			WEIGHTS (LBS.)			TANKS (GALS.)		
	*EXTERIOR TRAVEL LENGTH	EXTERIOR WIDTH	EXTERIOR HEIGHT (WITH A/C)	DRY HITCH WEIGHT	SHIPPING WEIGHT (AVERAGE)	CARGO CARRYING CAPACITY	***FRESH WATER CAPACITY	GREYWATER CAPACITY	BLACKWATER CAPACITY
3615	38', 11"	8', 4"	13', 3"	2,835	13,745	3,055	128	84	88
3655	39', 4"	8', 4"	13', 4"	2,801	13,464	3,336	160	84	40
3705	39', 0"	8', 4"	13', 3"	2,860	13,113	3,687	160	88	44
3915	42', 11"	8', 4"	13', 3"	3,028	14,876	5,124	128	84	88
4115	43', 10"	8', 4"	13', 3"	3,554	15,456	4,544	160	88	88
4145	TBD	TBD	TBD	TBD	TBD	TBD	TBD	TBD	TBD
4185	44', 5"	8', 4"	13', 3"	3,560	15,465	4,535	160	88	44
4205	43', 9"	8', 4"	13', 4"	2,996	15,983	4,017	160	114	84

*Length is defined as the distance from the centerline of hitch pin/coupler to rear bumper of trailer. **Our weights represent how most units are built, inclusive of many commonly-ordered options. ***Fresh water capacity includes water heater capacity.

TRITON

BY VOLTAGE

The Triton series offers the same legendary Voltage durability and luxury you expect but wrapped inside a more economical platform. Standard features flourish on the Triton, such as king-size beds, a 5500-watt generator, large holding tanks, and luxury living area amenities that make Triton the unmatched leader in value-priced toy haulers.



Standard in Every Voltage Triton.



Sleeps
up to 10



One-touch
auto leveling



Prepped
WIFI W/ 4G LTE

1. SOLID-SURFACE COUNTERTOPS
2. 50" TELEVISION
3. RECLINING SOFA
4. HARDWOOD CABINETRY



Triton 3531



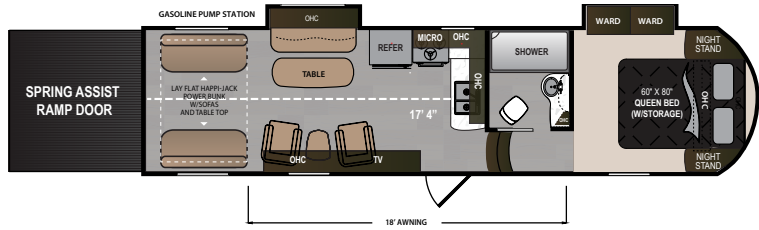
Triton 3951

Where Everywhere Feels Like Home

Function and form come together in the 2019 Voltage Triton toy hauler. Featuring solid-surface countertops, an 8-cu. ft. refrigerator with pantry, Jensen stereo system, 30-gallon fuel station, fully-insulated garage floor, and upgraded residential furniture, this luxury-packed fifth wheel delivers everything you need and more.

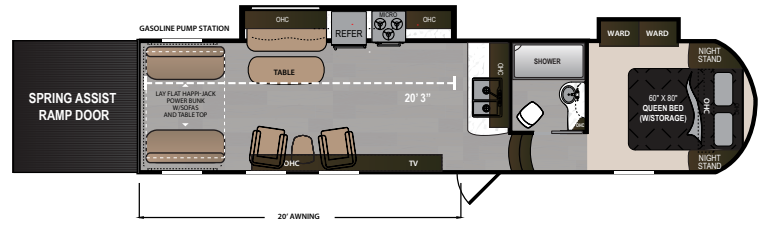
Voltage Triton Floorplans

FIFTH WHEELS



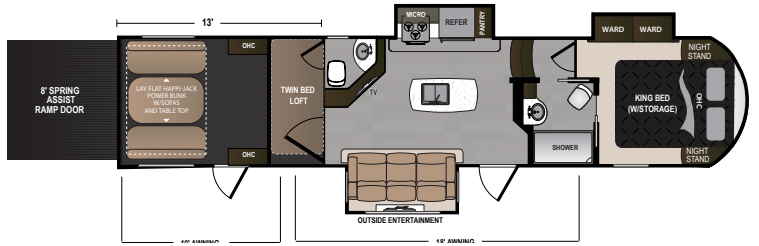
VOLTAGE TRITON | 3001

Ext. Length: **33' 6"** Ext. Height: **13' 4"** Weight: **10,363 lbs.** Sleeps: **4-6**



VOLTAGE TRITON | 3351

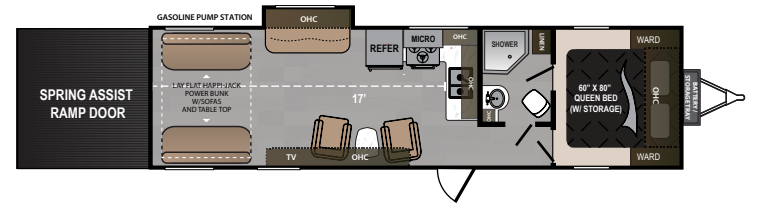
Ext. Length: **36' 6"** Ext. Height: **13' 4"** Weight: **11,286 lbs.** Sleeps: **4-6**



VOLTAGE TRITON | 3531

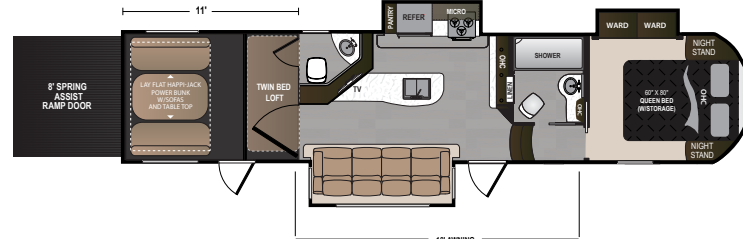
Ext. Length: **38' 11"** Ext. Height: **13' 3"** Weight: **12,436 lbs.** Sleeps: **5-7**

TRAVEL TRAILERS



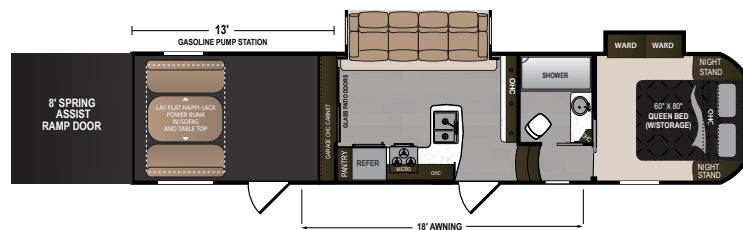
VOLTAGE TRITON | 3111

Ext. Length: **TBD** Ext. Height: **TBD** Weight: **TBD** Sleeps: **TBD**



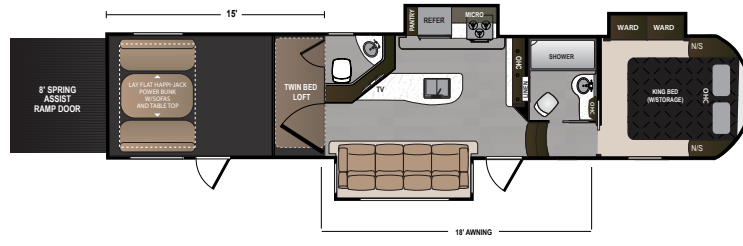
VOLTAGE TRITON | 3551

Ext. Length: **39' 0"** Ext. Height: **13' 4"** Weight: **12,648 lbs.** Sleeps: **5-7**



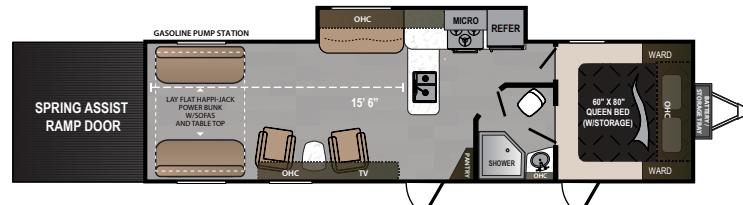
VOLTAGE TRITON | 3561

Ext. Length: **38' 10"** Ext. Height: **13' 4"** Weight: **11,826 lbs.** Sleeps: **4-6**



VOLTAGE TRITON | 3951

Ext. Length: **42' 11"** Ext. Height: **13' 4"** Weight: **13,892 lbs.** Sleeps: **5-7**

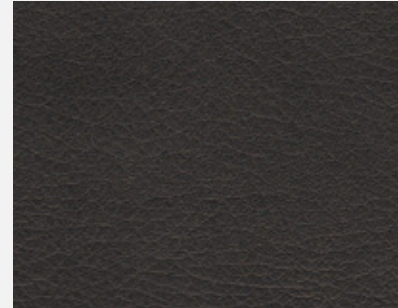


VOLTAGE TRITON | 3311

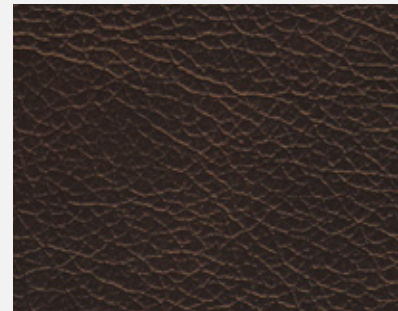
Ext. Length: **36' 6"** Ext. Height: **12' 4"** Weight: **9,452 lbs.** Sleeps: **4-6**

Interior Décor

ECLIPSE VINYL



TIMBER VINYL



DISCLAIMER: Product information is as accurate as possible as of the brochure publication date. All features, floorplans and specifications in this brochure are subject to change without notice. Please consult Dutchmen's website at www.Dutchmen.com for current product information and specifications. Tow Vehicle Disclaimer. **CAUTION:** Owners of Dutchmen recreational vehicles are solely responsible for the selection and proper use of tow vehicles. All customers should consult with a motor vehicle manufacturer or their dealer concerning the purchase and use of suitable tow vehicles for Dutchmen products. Dutchmen disclaims any liability or damages suffered as a result of the selection, operation, use or misuse of a tow vehicle. DUTCHMEN'S LIMITED WARRANTY DOES NOT COVER DAMAGE TO THE RECREATIONAL VEHICLE OR THE TOW VEHICLE AS A RESULT OF THE SELECTION, OPERATION, USE OR MISUSE OF THE TOW VEHICLE. REFERENCE DUTCHMEN MANUFACTURING OWNERS MANUAL FOR LIMITED WARRANTY DETAILS.

Voltage Triton Standards and Options

TRITON EXTERIOR PACKAGE

1" Thick Baggage Doors
50-Amp Service with 50' Cord and Indicator Lights
7,040-lb Load Range F-Rated HD Tires (per Axle)
Fully Walkable Roof w/ TPO Superflex Material (12-Year Warranty)
King Air Digital Antenna
Tinted Safety Glass Windows
16" Aluminum Wheels
7,000-lb Axles with Ultra Lube
Fuel Tank w/ Pump Station (30-Gallons)
Large Electric Awning with LED Lights
Spare Tire with Carrier
Upgraded Graphics with 3-Year Warranty

TRITON INTERIOR PACKAGE

1.0 cu. ft. Microwave
3 Burner Range w/ Upgraded Burner
King Bed (Fifth Wheels)
Atwood 6-Gallon Gas Electric Water Heater w/DSI and 17.8 gal/hour Recovery
Cable/Satellite Prep
Jensen Stereo System with HDMI/ AM/FM/DVD/Bluetooth
Pleated Night Shades Throughout the Entire Coach
Residential Duvet Covers
Stainless-Steel Kitchen Sink
15,000-BTU Bedroom A/C with Thermostat Sensor
32"-39" LCD HD Main TV
8 cu. ft. Refrigerator w/ Pantry
Bedroom TV Prep

Insulated Heat and A/C Ducts
Range Hood with Fan and Lights
Solid-Surface Kitchen Countertops
Upgraded Residential Furniture

TRITON GARAGE PACKAGE

2 Indoor/Outdoor Speakers
Metal Ram Air Vents
2,500-lb Tie Downs
Tuff Ply Garage Flooring

GENERATOR

Onan 5.5 KW Gas Generator

OPTIONS

Ramp Door Patio Systemw/ Patio Awning

6 Point HydraulicOne Touch Leveling System
--

MANDATORY OPTIONS

Nitro Fill Tires
Triton Exterior Package
Triton HappiJac Electric Bed and Roll Over Sofa System with Table
Rear Electric Jacks
Triton Garage Package
Triton Interior Package
12-Volt Tank Heaters with Interior Switches

CODES & SEALS

CSA Construction Seal
State Seal (Where Applicable)
RVIA Seal

Voltage Triton Specifications

FLOORPLAN	DIMENSIONS			WEIGHTS (LBS.)			TANKS (GALS.)		
	*EXTERIOR TRAVEL LENGTH	EXTERIOR WIDTH	EXTERIOR HEIGHT (WITH A/C)	DRY HITCH WEIGHT	SHIPPING WEIGHT (AVERAGE)	CARGO CARRYING CAPACITY	***FRESH WATER CAPACITY	GREYWATER CAPACITY	BLACKWATER CAPACITY
3001 FW	33', 6"	8', 4"	13', 4"	2,391	10,363	4,637	92	40	40
3111 TT	TBD	TBD	TBD	TBD	TBD	TBD	TBD	TBD	TBD
3311 TT	36', 6"	8', 4"	12', 4"	1,334	9,452	3,548	92	88	44
3351 FW	36', 6"	8', 4"	13', 4"	2,496	11,286	5,514	156	40	40
3531 FW	38', 11"	8', 4"	13', 3"	3,014	12,436	4,364	92	84	88
3551 FW	39', 0"	8', 4"	13', 4"	3,020	12,648	4,152	124	84	84
3561 FW	38', 10"	8', 4"	13', 4"	2,729	11,826	4,974	124	70	40
3951 FW	42', 11"	8', 4"	13', 4"	3,472	13,892	4,108	124	84	84

*Length is defined as the distance from the centerline of hitch pin/coupler to rear bumper of trailer. **Our weights represent how most units are built, inclusive of many commonly-ordered options. ***Fresh water capacity includes water heater capacity.

2019

VOLTAGE SERIES

MORE STANDARD FEATURES MORE VALUE. Dutchmen RVs turn more heads on the lot and in the campground than any other. Why? While other manufacturers offer features as options, Dutchmen tends to make those same features standard. Call it “bang for the buck,” “more for your money,” or simply “more value.” We’ve built a reputation for bringing RV owners more standard features for less money for more than 25 years . . . and it’s a reputation we plan to keep.



VOLTAGE

TRITON
BY VOLTAGE



Dutchmen—A North American Campground Classic.
Few manufacturers have built RVs for 30+ years, and only one has set the standard for innovation AND value. Dutchmen IS “A North American Campground Classic.”



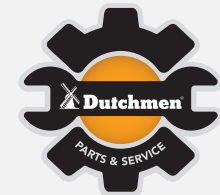
100% PRE-DELIVERY INSPECTION

At Dutchmen, quality is our standard. Every single Dutchmen RV that comes off the line receives its own pre-delivery inspection. Typically, a competitor performs random inspections, meaning you won’t find this commitment to quality anywhere else.



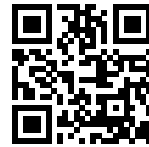
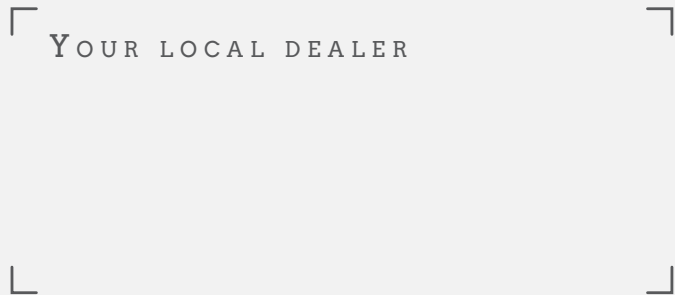
THE INDUSTRY’S BEST RV WARRANTY

With this industry-best warranty, we take the guessing game out of what is and isn’t covered. So, that means you don’t have to wrangle over the details, because we deliver value by clearly outlining the major components we back during the first three years.



THE LEADER IN PARTS AND SERVICE

Replacement parts. Routine checkups. Expert advice. You name it and we’ve got it covered. When only the best RV services will suffice, our industry-leading parts and service department is ready to help you get back on the road—and stay there longer than ever before.



To check for recent updates to floorplans and specifications. **Scan this QR CODE** with your favorite QR Reader application.

From giving advice to servicing products, we consider our loyal dealers the best resource for learning about Dutchmen products.

PO BOX 2000 • 2164 Caragana Court • Goshen, Indiana 46527 • Sales: 574.537.0600 • www.dutchmen.com

DISCLAIMER: Product information is as accurate as possible as of the brochure publication date. All features, floorplans and specifications in this brochure are subject to change without notice. Please consult Dutchmen’s website at www.Dutchmen.com for current product information and specifications. Tow Vehicle Disclaimer. CAUTION: Owners of Dutchmen recreational vehicles are solely responsible for the selection and proper use of tow vehicles. All customers should consult with a motor vehicle manufacturer or their dealer concerning the purchase and use of suitable tow vehicles for Dutchmen products. Dutchmen disclaims any liability or damages suffered as a result of the selection, operation, use or misuse of a tow vehicle. DUTCHMEN’S LIMITED WARRANTY DOES NOT COVER DAMAGE TO THE RECREATIONAL VEHICLE OR THE TOW VEHICLE AS A RESULT OF THE SELECTION, OPERATION, USE OR MISUSE OF THE TOW VEHICLE. REFERENCE DUTCHMEN MANUFACTURING OWNERS MANUAL FOR LIMITED WARRANTY DETAILS. ©2019 Dutchmen. 1-19-VOLTAGE-TRITON- Printed in U.S.A.

www.dutchmen.com

Visit us online to see all of the Dutchmen brands, innovative models and spacious floor plans.