

**REDWOOD**

RESIDENTIAL VEHICLES





38RL with Godiva Décor and Rustic Cherry Cabinets



38 RE with Caramel Décor and Urban Clay Cabinets



Pull-out Cutting Board



Lighted Counter Edge



39MB 1/2 Bath



38 RE with Caramel Décor and Urban Clay Cabinets



39MB with Coastal Trail Décor and Rustic Cherry Cabinets




# A CUSTOM FIT FOR YOU

Falcon Integrated Technology (FIT) ensures quality down to the smallest of details. All components of the FIT chassis system are sourced from a single manufacturer, producing one of the industry's most sought-after foundations.

Additionally, having a custom chassis system from a single manufacturer eliminates worries down the road. One single point of contact makes it easier for owners to understand and easier for servicing dealers to get answers and solutions.

# EVERY GOOD HOME NEEDS A FIT FOUNDATION



**WELDED HITCH RECEIVER**  
FIT's integrated hitch receiver can haul 3,000 pounds of additional cargo (300 lb. tongue capacity).



**HYDRAULIC SLIDE-OUT SYSTEM**  
The gold standard for hydraulic slide-out systems, Falcon provides years of worry-free operation and makes us distinct among the competition.




**TRAIL AIR ROTA-FLEX PIN BOX**  
The FIT chassis system comes standard with the Trail Air Rota-Flex pivoting head pin box. The Rota-Flex utilizes a rubberized compound that absorbs vibration and reduces chucking - giving you an improved ride.

**FALCON BRAND AXLES**  
Falcon 7,000 lb. axles are built to last and offer many advantages over the competition:

- Self-adjusting brakes improve stopping time up to 50% and lower maintenance costs.
- Powder-coated axle tubes protect against corrosion.
- EZ-Lube hubs allow for quick and easy maintenance.

Falcon 8,000 lb. axles and disc brakes are also offered as options.



**EQUA-FLEX SUSPENSION**  
FIT's Equa-Flex rubberized suspension system cushions and protects the Redwood from road vibration and bumps. It provides a much smoother ride while protecting your cargo from damage.

**FALCON QUADSTEPS**  
The Falcon Quad Step is simply a better step. Four steps instead of three make getting in and out of the Redwood that much easier.

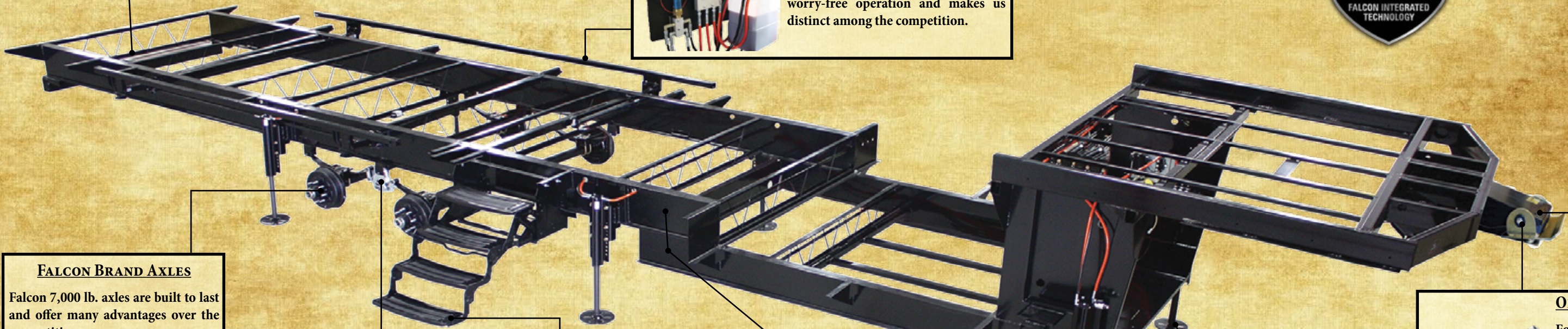
**THE FALCON FRAME**  
The Falcon Frame utilizes the very best materials available and represents the best the industry has to offer:

- Powder coated frame for protection
- Heavy-duty 12" I-Beam main rails
- 10" I-Beam drop frame for increased storage capacity.

**6-PT. HYDRAULIC AUTO LEVEL**  
Gone are the days of boards, blocks, and backaches. Every Redwood comes standard with a fully-automatic 6-pt. hydraulic Level Up system. With the touch of a button (and in less than a minute), you can be leveled and ready to relax. When you're ready to go again, a memory function returns the pinbox to the height of your truck's hitch.



**OPTIONAL AIR-RIDE HITCH**  
For the ultimate ride, upgrade to the Trail Air Tri-Glide hitch system. This optional hitch is the first air spring system to both reduce chucking and control vertical bounce - making it ride like a cloud. Just don't forget it's back there!





# CONSTRUCTED FOR FULL-TIME LIVING

## Floor - R42 Total Insulation

### Subfloor - R14

1. F.I.T. Frame
2. AstroFoil Insulation
3. Corrugated Underbelly

### Floor - R28

4. Shaw Residential Carpet
5. Residential Carpet Pad
6. Congoleum Vinyl Flooring
7. 5/8" Tongue-in-Groove Plywood
8. 3" Welded Aluminum Frame
9. AstroFoil Insulation
10. 2 Layers Batten Insulation
11. Darco Moisture Barrier

## Bath Deck - R21 Insulation

12. 5/8" Tongue-in-Groove Plywood
13. AstroFoil & Batten Insulation
14. 3" Welded Aluminum Frame
15. Finished Pass-Thru Ceiling

## Sidewalls - R9 Insulation

16. High-Gloss T60 Fiberglass
17. Double Luan Backer
18. 2" Welded Aluminum Frame
19. Sanded Block Foam Insulation
20. Interior Wall Board

## Slide Outs

### 21. Laminated Outside Wall - R9

### 22. Slide End Walls - R21

- Fiberglass Layer
- Batten Insulation
- AstroFoil Insulation

### 23. Slide Roof - R21

- Alpha Ply Roofing
- Batten Insulation
- AstroFoil Insulation

### 24. Slide Floor - R14

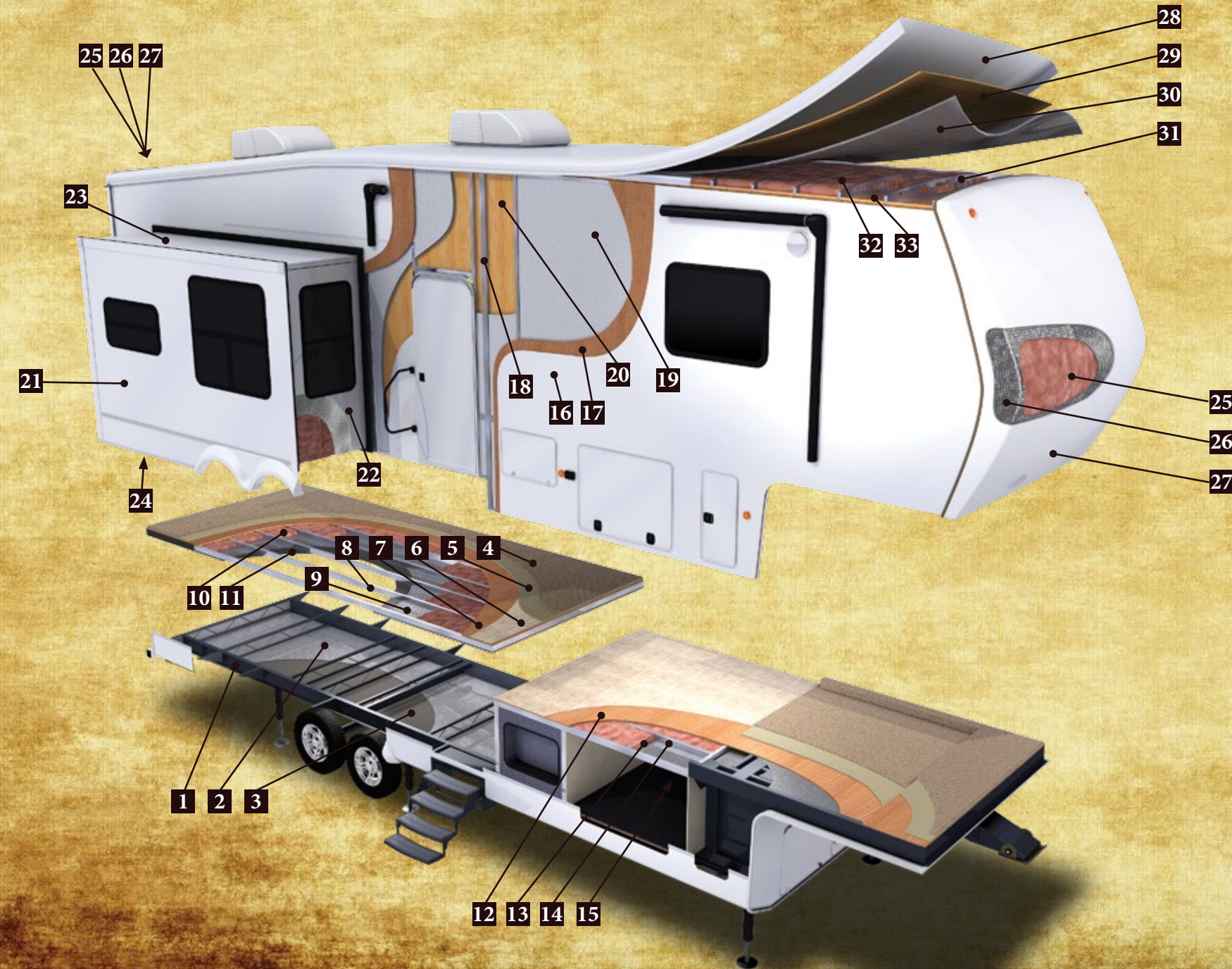
- AstroFoil Insulation
- Darco Moisture Barrier

## Front/Rear Caps - R21 Insulation

25. 2 Layers Batten Insulation
26. AstroFoil Insulation
27. Molded Fiberglass Cap

## Roof - R28 Insulation

28. Alpha Ply Roofing
29. 3/8" Roof Decking
30. AstroFoil Insulation
31. Stamped Steel Roof Trusses
32. 2 Layers Batten Insulation
33. Interior Ceiling Board



## 3 LAYERS OF PROTECTION

### **Sanded Block Foam**

Much like a styrofoam coffee cup, sanded block foam is an excellent insulator in both warm and cold conditions. If a 2mm thick coffee cup can keep piping hot coffee from burning your hand, just imagine how well 2 inches of this material keeps your Redwood insulated!



### **Fiberglass Batten Insulation**

Any well-constructed home will employ fiberglass batten insulation due to its outstanding thermal efficiency. Redwood utilizes Ecobatt® insulation - a phenol-free, formaldehyde-free, and acrylic-free form of fiberglass batten insulation.



### **Astro Foil**

Many of Redwood's full-time capabilities are owed to Astro Foil. This space-age material acts as a reflective thermal barrier, reflecting an astounding 97% of radiant heat. This serves to reflect heat away from the Redwood in warmer weather, as well as reflect heat back inside in cooler weather.







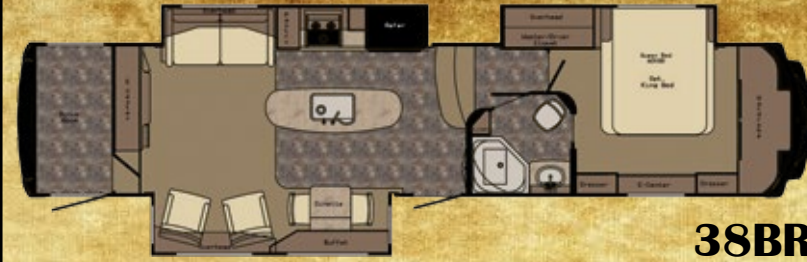
**31SL**

Ship Weight: 12,120 lbs.    Ext. Length: 34' 9"  
 GVWR: 16,500 lbs.    Height w/AC: 13' 2"  
 Carrying Cap.: 4,380 lbs.    Tank Capacities: 104/90/45  
 Hitch Weight: 2,265 lbs.    Tire Size: 235/85 R16 "G"  
 Axle Weight: 9,855 lbs.



**38RL**

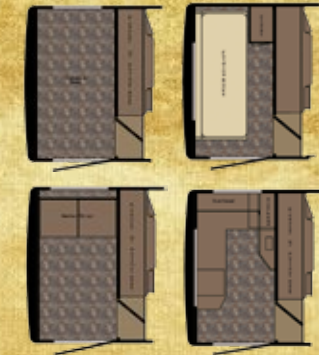
Ship Weight: 13,672 lbs.    Ext. Length: 41' 5"  
 GVWR: 16,500 lbs.    Height w/AC: 13' 2"  
 Carrying Cap.: 2,828 lbs.    Tank Capacities: 104/90/45  
 Hitch Weight: 2,478 lbs.    Tire Size: 235/85 R16 "G"  
 Axle Weight: 11,194 lbs.



**38BR**

Ship Weight: 13,500 lbs.    Ext. Length: 41' 0"  
 GVWR: 16,500 lbs.    Height w/AC: 13' 2"  
 Carrying Cap.: 3,000 lbs.    Tank Capacities: 104/90/45  
 Hitch Weight: 2,665 lbs.    Tire Size: 235/85 R16 "G"  
 Axle Weight: 10,835 lbs.

**Bonus Room Options:**



**36FB**

Ship Weight: 13,110 lbs.    Ext. Length: 38' 11"  
 GVWR: 16,500 lbs.    Height w/AC: 13' 2"  
 Carrying Cap.: 2,890 lbs.    Tank Capacities: 104/90/45  
 Hitch Weight: 2,625 lbs.    Tire Size: 235/85 R16 "G"  
 Axle Weight: 10,485 lbs.



**38GK**

Ship Weight: 14,078 lbs.    Ext. Length: 41' 5"  
 GVWR: 16,500 lbs.    Height w/AC: 13' 2"  
 Carrying Cap.: 2,422 lbs.    Tank Capacities: 104/90/45  
 Hitch Weight: 2,594 lbs.    Tire Size: 235/85 R16 "G"  
 Axle Weight: 11,484 lbs.



**39FL**

Ship Weight: 13,904 lbs.    Ext. Length: 41' 10"  
 GVWR: 16,500 lbs.    Height w/AC: 13' 2"  
 Carrying Cap.: 2,596 lbs.    Tank Capacities: 104/90/45  
 Hitch Weight: 2,196 lbs.    Tire Size: 235/85 R16 "G"  
 Axle Weight: 11,708 lbs.

**Slide-in-Slide Option**

Nearly Doubles Floor Space  
 in Front of the Bed!

Available on:  
 36RL, 36FB, 38BR,  
 38GK (std.), 39MB

KING Bed Slide-in-Slide  
 Available on:  
 38RL, 38RE



**36RL**

Ship Weight: 12,970 lbs.    Ext. Length: 38' 11"  
 GVWR: 16,500 lbs.    Height w/AC: 13' 2"  
 Carrying Cap.: 3,530 lbs.    Tank Capacities: 104/90/45  
 Hitch Weight: 2,580 lbs.    Tire Size: 235/85 R16 "G"  
 Axle Weight: 10,390 lbs.



**38RE**

Ship Weight: 13,720 lbs.    Ext. Length: 41' 5"  
 GVWR: 16,500 lbs.    Height w/AC: 13' 2"  
 Carrying Cap.: 2,780 lbs.    Tank Capacities: 104/90/45  
 Hitch Weight: 2,400 lbs.    Tire Size: 235/85 R16 "G"  
 Axle Weight: 11,320 lbs.



**39MB**

Ship Weight: 13,996 lbs.    Ext. Length: 41' 8"  
 GVWR: 16,500 lbs.    Height w/AC: 13' 2"  
 Carrying Cap.: 2,504 lbs.    Tank Capacities: 104/90/90  
 Hitch Weight: 2,274 lbs.    Tire Size: 235/85 R16 "G"  
 Axle Weight: 11,722 lbs.

## Décor Selections





## Kitchen & Appliances

- Solid Cherry Hardwood Cabinetry
- Stiles Pre-Drilled & Screwed Together
- Residential Sized Storage Drawers
- Pots & Pans Storage
- Full-Extension Ball-Bearing Drawer Guides
- Residential Hidden Hinges
- EGS Steel Backed Cabinet Anchors
- Large Residential Pantry w/ Appliance Garage & 110v Outlet
- LG Solid Surface Countertops
- LG Solid Surface Sink & Stove Covers
- LG Solid Surface Backsplash w/ Shelf
- Solid Surface Farmhouse Sink
- High Rise Faucet w/Pull Out Sprayer
- Over-Island Lighting
- 12 cu. ft. Norcold S/S Refrigerator w/ Ice Maker
- 3-Burner Flush Mount Stainless Stove
- 22" Deluxe Stainless Baker's Oven
- 30" Stainless OTR Convection Microwave w/ Exhaust Fan

## Bedroom

- 60" x 80" iCool™ Gel Foam Mattress
- 110v Outlets on Both Sides of Bed
- LG® LED HDTV
- Residential Dresser w/ Drawers
- Walk-In Closet with Shelving (8 ft. wide)
- Night Roller Shades
- Pre-Wired for Maxx Air Fan & 2nd A/C

## Living Area

- Diamond Collection Furniture Package:
  - Residential Sofa (Hide-a-Bed option)
  - Residential Wall-Hugger Recliners
  - Buffet -Style Adjustable Dinette w/ Leaf Extensions
  - 2 Premium Dinette Chairs
  - 2 Folding Dinette Chairs
- Day/Night Roller Shades
- Premium Entertainment Center
- LG® LED HDTV
- BluRay™/DVD/CD Player
- JBL® Sound Bar
- Pre-wired for Winegard® Satellite Systems
- Ceiling Fan

## Bathroom

- One Piece Fiberglass Shower
- Niagara Waterfall Glass Shower Door
- Domed Skylight in Shower
- Porcelain Foot Flush Toilet
- Large Mirrored Medicine Cabinet
- Heat & A/C Duct in Bathroom
- Power Roof Vent
- Adjustable Handheld Shower Head

## General Interior

- LED Recessed Ceiling & Accent Lights
- Solid Hardwood Slide Fascia
- 6' 9" Interior Slide Room Height
- 15,000 BTU WhisperQuiet A/C
- 40,000 BTU Furnace
- Shaw® Residential Carpet w/ Pad
- Premium Lino Flooring
- Central Vacuum

## Construction

### Chassis

- Custom FIT Chassis
  - Falcon 12"/10" I-Beam Drop Frame
  - Roto-Flex Pin Box
  - Falcon Hydraulic Slide Out System w/ Manual Override (Main Slides)
  - Falcon 7,000 lb. Axles
  - Equa-Flex Suspension System
  - 6-Point Hydraulic Jacks w/Auto Leveling
  - Falcon 4-Step Entry
  - Falcon 2" Receiver Hitch

### Sidewalls

- 2" Laminated Wall
- Sanded Block Foam Insulation
- Double Welded Aluminum Frame
- Double Luan Backer
- T60 High-Gloss Gel Coat Fiberglass

### Floor

- 5/8" Tongue & Groove Plywood
- 3" Aluminum Subfloor - 11" on Center
- 2 Layers of Batten Fiberglass Insulation
- 2 Layers of Flex Foil Insulation
- Darco Moisture Barrier
- Corrugated PVC Enclosure
- Fully Enclosed & Heated Underbelly

### Roof

- One Piece Alpha-Ply Roof Material
- 5" Galvanized Stamped Steel Trusses
- Double Trusses at each A/C
- 3/8" Roof Decking
- 2 Layers of Batten Fiberglass Insulation
- 1 Layer of Flex Foil Insulation
- Fully Vented
- Fully Walkable

## General Exterior

- Front & Rear Insulated Fiberglass Caps
- LED Pin Box Light
- Aerodynamic Profile
- Exterior Docking Station w/ All Hookups & Black Tank Flush
- Winterization Valve
- Slam Latch Baggage Doors
- Fully Finished & Insulated Pass-Through Storage
- 104 Gallon Fresh Tank
- (2) 45 Gallon Grey Tanks
- 45 Gallon Black Tank
- Furnace-Heated Tank System
- 12 gal. DSI Hot Water Heater
- Enclosed & Heated PEX Water Lines
- Seamless Residential Heat Ducts
- Radius Whole-House A/C Ducting
- Kinro® Frameless Windows
- Carefree Adjustable Awning w/ LED Lights
- Progressive 90 Amp/12v DC Power Converter
- 50 Amp Detachable Power Cord
- Dual Battery Box
- 110v Exterior Receptacle
- Battery Disconnect Switch
- (4) G Range Tires (w/ Spare)
- 8 Lug Aluminum Rims
- 2" Self-Adjusting Drum Brakes
- (2) 30 lb. LP Tanks w/Auto Change Over
- R-42 Main Floor
- R-28 Roof
- R-21 Bath Deck
- R-21 Front & Rear Caps
- R-14 Slide Ends
- R-9 Sidewall

# Optional Upgrades

- Premium Décor w/Urban Clay Cabinetry
- Whirlpool French Door Refrigerator w/ In-Door Water & Ice Dispensers
- 3 Burner Cooktop w/3 Drawers
- Fisher-Paykel Dishwasher
- 2nd 15,000 BTU A/C
- Heat Pump on A/C(s)
- King Bed
- Hide-a-Bed Sofa
- Extended Vinyl Flooring in Living Room
- 5100 BTU Fireplace
- 2-pc. Washer/Dryer
- MaxxFan - Kitchen
- MaxxFan - Bathroom
- MaxxFan - Bedroom
- Electric Induction Cooktop
- Trail-Air Tri-Glide Pin Box
- Water Filtration System
- 5.5 Onan LP Generator
- Generator Prep
- 40 lb. LP bottles
- Holding Tank Heaters
- Slide Awning Package
- 2nd Power Awning w/LED
- Uniguard Awning Upgrade
- 2nd Uniguard Awning Upgrade
- 32" Exterior TV (Mandatory)
- Goodyear "H" Tires
- 8000 lb. Axles
- Disc Brakes
- Slide-in-Slide (select models)
- Power Cord Reel - Electric
- Wireless Backup Camera
- Butler Pantry IPO 1/2 Bath (39MB)
- Full Body Paint (Mandatory)
- Dual Pane Windows (Mandatory)
- Linc™ Pad - Wireless Control for Your Redwood!



Scan with your smartphone to learn more!

*Operates lights, slides, leveling, awnings, & more!*



Redwood customers expect the best. We strive to meet and exceed our customers' expectations in quality, craftsmanship, beauty, and comfort. We stand behind this commitment with our 2-year, full-time approved warranty - designed to give you peace of mind for the road ahead.





1140 W. Lake St. • Topeka, IN • 46571  
Ph: (260) 593-3850 • [www.redwoodrv.com](http://www.redwoodrv.com)



*Tan & Burgundy*

*Black & Maroon*

*Black & Silver*

*Black & Tan*

Disclaimer: Product information is as accurate as possible at the date of publication of this brochure. All features, floor plans, and specifications in this brochure are subject to change without notice. Please also consult [redwoodrv.com](http://redwoodrv.com) for the most current product information and specifications. Tow Vehicle Disclaimer - CAUTION: Owners of Redwood recreational vehicles are solely responsible for the selection and proper use of tow vehicles. All customers should consult with a motor vehicle manufacturer or their dealer concerning the purchase and use of suitable tow vehicles for Redwood RV products. Redwood RV disclaims any liability or damages suffered as a result of the selection, operation, use or misuse of a tow vehicle. REDWOOD RV'S LIMITED WARRANTY DOES NOT COVER DAMAGE TO THE RECREATIONAL VEHICLE OR TOW VEHICLE AS A RESULT OF THE SELECTION, OPERATION, USE OR MISUSE OF THE TOW VEHICLE. Revised 1/2015