

# ASTORIA

Astoria fifth wheels and travel trailers deliver highly visible, value-driven standard features. The inclusions and design are timeless, yet forward trending to address your desire for comfort and style.

## Features in Astoria

- **KeyTV** - functions as the “brain” of the system into which you plug the satellite feeds. The roof mounted antenna is already pre-wired into the system. KeyTV identifies over-the-air, cable and satellite signals and sends each signal to the TV outlets located throughout the RV.
- **All-Weather Thermal Package** - fully enclosed and force-heated underbelly that delivers cold-weather campers with two layers of insulation and enclosed gate valves. With this kind of protection for your RVs vital components, your vacation plans don't have to be confined to summer.
- **First Class Construction** - full welded aluminum framing and vacuum bonded exterior which is superior to other processes, ensuring the integrity of the Astoria.

## Astoria Travel Trailer

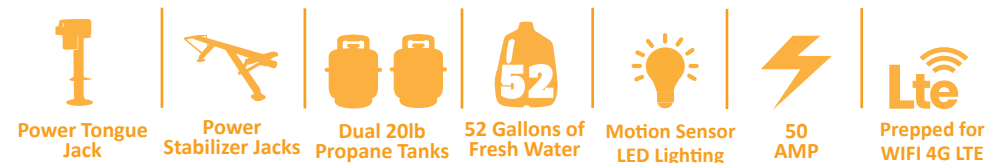
### EXTERIOR

Power Awning w/LED Lights  
Tinted Safety Glass Windows  
Aluminum Wheels  
Outside Speakers  
Pass Thru Storage  
2" Receiving / Towing Hitch  
All LED Marker Lights  
Fiberglass Cap w/Windshield  
Vacuum Bonded Lamination  
Exterior Spray Port  
Premium Folding Entry Step  
Heated and Enclosed Underbelly  
Battery Disconnect  
Exterior Camping Kitchen  
Slam Latch Baggage Doors

### INTERIOR

One-Piece Countertops  
30" Glass Fireplace  
40" LED TV  
Theatre Seating / Tri-Fold Sleeper Sofa  
6 Gallon Gas/Electric DSI Water Heater  
8.0 cu. ft. Double Door Refrigerator  
Full Wall Acrylic Backsplash  
Glass Top 3 Burner Range w/17" Oven  
Stainless-Steel Appliances  
High-Rise Kitchen Faucet w/Sprayer  
Arched Interior Ceiling  
70" x 80" King Bed  
Kitchen Countertop Extensions (select models)  
Convertible U-Shape Dinette

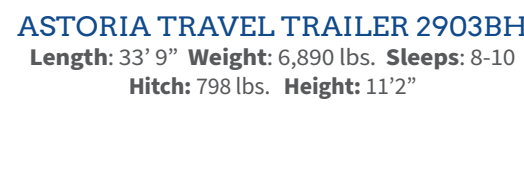
## Standard Features In Every Astoria Travel Trailer Floor Plan



**ASTORIA TRAVEL TRAILER 2203RB**  
Length: TBD Weight: TBD Sleeps: 4-6  
Hitch: TBD Height: TBD



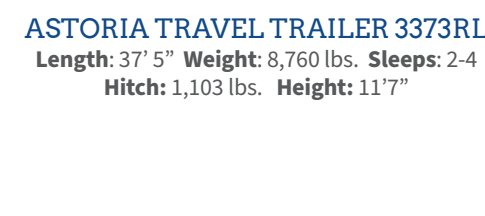
**ASTORIA TRAVEL TRAILER 2773RB**  
Length: 31' 1" Weight: 6,564 lbs. Sleeps: 4-6  
Hitch: 972 lbs. Height: 11'5"



**ASTORIA TRAVEL TRAILER 2903BH**  
Length: 33' 9" Weight: 6,890 lbs. Sleeps: 8-10  
Hitch: 798 lbs. Height: 11'2"



**ASTORIA TRAVEL TRAILER 3203BH**  
Length: 36' 10" Weight: 7,980 lbs. Sleeps: 8-10  
Hitch: 1,020 lbs. Height: 11'5"



**ASTORIA TRAVEL TRAILER 3373RL**  
Length: 37' 5" Weight: 8,760 lbs. Sleeps: 2-4  
Hitch: 1,103 lbs. Height: 11'7"



**ASTORIA TRAVEL TRAILER 3393BH**  
Length: 37' 5" Weight: 8,342 lbs. Sleeps: 4-6  
Hitch: 1,114 lbs. Height: 11'7"

\*All information & specifications are for units manufactured after 09/15/2019



## Astoria Fifth Wheel

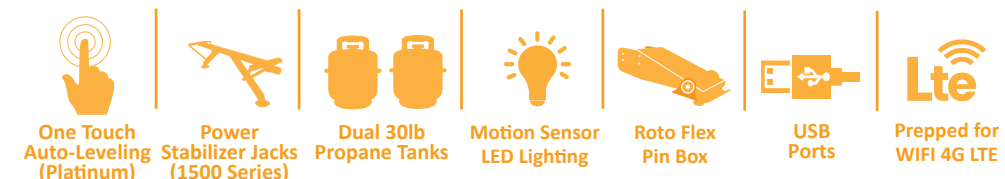
### EXTERIOR

Power Awning w/LED Lights  
Tinted Safety Glass Windows  
Aluminum Wheels  
Outside Speakers  
All Weather Thermal Package  
Pass Thru Storage  
High Gloss Exterior (Platinum Series)  
All LED Marker Lights  
2" Receiving / Towing Hitch  
Vacuum Bonded Lamination  
Premium Folding Entry Step  
Exterior Spray Port  
Battery Disconnect  
Dual Door Side Awnings (select models)  
Slam Latch Baggage Doors

### INTERIOR

Solid-Surface Countertops w/LED Backlighting (Platinum Series)  
Stainless Steel Farm Sink w/Apron (Island Models Only)  
40" Glass Fireplace  
Theatre Seating  
50" LED TV  
6 Gallon Gas/Electric DSI Water Heater  
8.0 cu. ft. Double Door Refrigerator (1500 Series)  
Full Wall Acrylic Backsplash  
Glass Top 3 Burner Range w/21" Oven  
Stainless-Steel Appliances  
12 cu. ft. 4 Door Refrigerator (Platinum Series)  
High-Rise Kitchen Faucet w/Sprayer  
Panoramic Windows  
Hardwood Slide Fascia w/LED Backlighting  
Washer/Dryer Prep (Platinum Series)

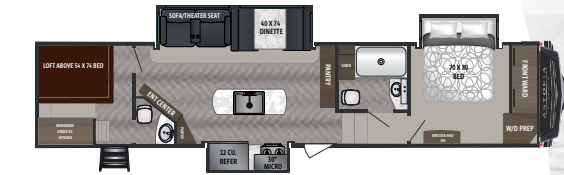
## Standard Features In Every Astoria Fifth Wheel Floor Plan



## PLATINUM SERIES



**ASTORIA PLATINUM FW 3173RLP**  
Length: 35' 11" Weight: 10,007 lbs. Sleeps: 3-4  
Hitch: 1,761 lbs. Height: 12'2"



**ASTORIA PLATINUM FW 3503LFP**  
Length: TBD Weight: TBD  
Sleeps: 8-10 Hitch: TBD Height: TBD



**ASTORIA PLATINUM FW 3553MBP**  
Length: 39' 11" Weight: 11,312 lbs.  
Sleeps: 8-10 Hitch: 1,895 lbs. Height: 12'6"

## 1500 SERIES



**ASTORIA 1500 FW 2503REF**  
Length: 30' 0" Weight: 7,880 lbs. Sleeps: 2-3  
Hitch: 1,476 lbs. Height: 12'5"



**ASTORIA 1500 FW 2943BHF**  
Length: 33' 10" Weight: 8,670 lbs.  
Sleeps: 6-8 Hitch: 1,566 lbs. Height: 12'6"



**ASTORIA 1500 FW 2993RLF**  
Length: 33' 11" Weight: 9,281 lbs.  
Sleeps: 3-4 Hitch: 1,608 lbs. Height: 12'10"



**ASTORIA 1500 FW 3343BHF**  
Length: TBD Weight: TBD  
Sleeps: TBD Hitch: TBD Height: TBD

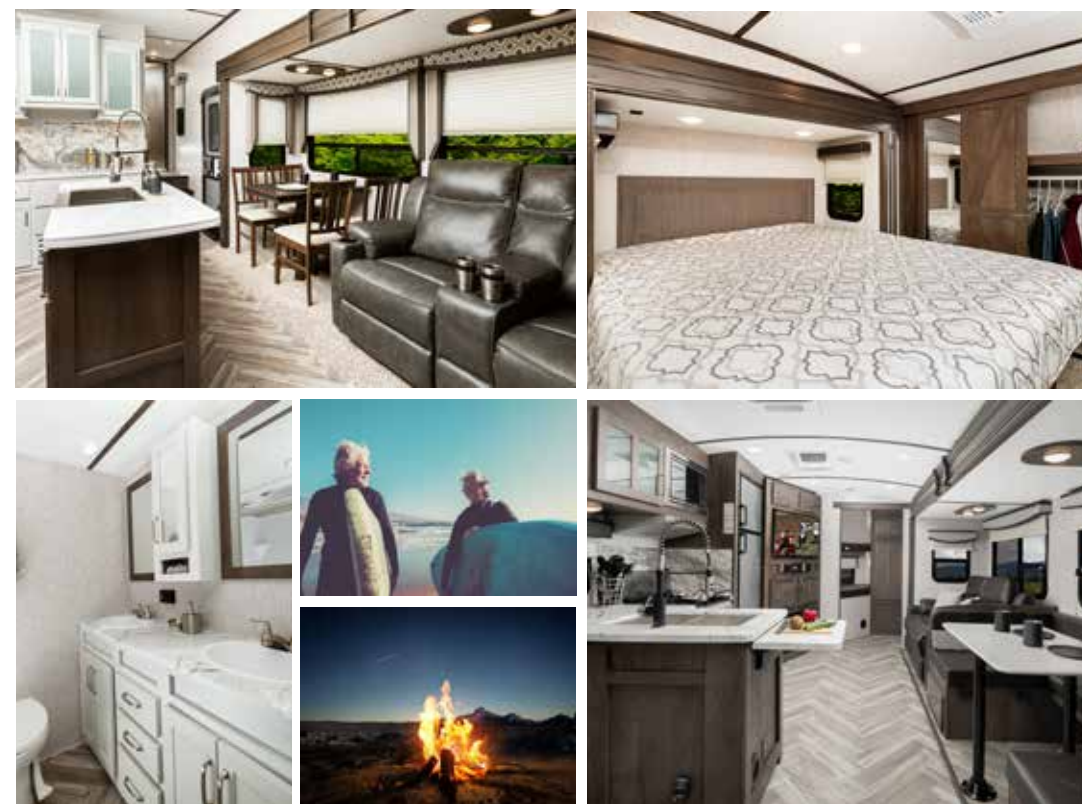
## COMING SOON

# ASTORIA

## Sense of belonging

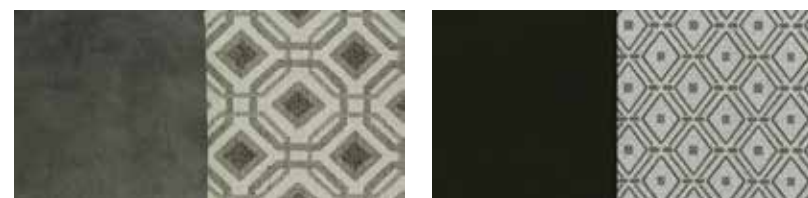
Whether you're listening to the ocean waves crash against the beach, a coyote howling off in the mountain distance, or the sounds of the big city, comfort is found here.

Astoria 3173RLP Fifth Wheel



Astoria 2903BH Travel Trailer

### Interior Decor



Gunmetal

Walnut

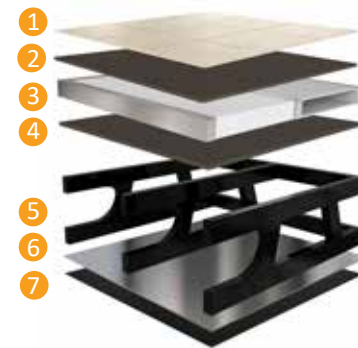
To learn more visit our website [dutchmen.com](http://dutchmen.com)



### DUTCHMEN® CONSTRUCTION ADVANTAGE

#### Vacuum Bonded Floor Structure

- 1 Linoleum Flooring
- 2 Composite Floor Decking
- 3 Aluminum Frame with Block Foam Insulation and Heat Duct
- 4 Composite Floor Decking
- 5 Steel powder coated main I-Beam Frame
- 6 Foil Barrier (FW Only)
- 7 Fully Enclosed Underbelly

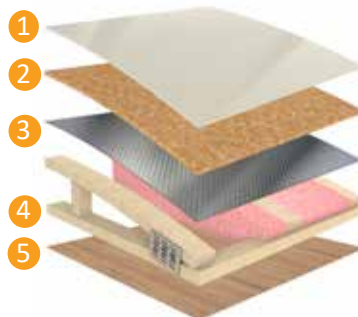


#### Vacuum Bonded Laminated Walls

- 1 Fiberglass Exterior Panel
- 2 Lauan Wall Backing
- 3 Aluminum Frame with Block Foam Insulation
- 4 Lauan Interior Wall Panel

#### Roof Structure

- 1 TPO Roof
- 2 3/8" Decking
- 3 Foil Barrier (FW only)
- 4 Fiberglass Insulation
- 5 Lauan Interior Panel



PO BOX 2000 | 2164 CARAGANA COURT | GOSHEN, IN 46527 | SALES 574.537.0600

[www.dutchmen.com](http://www.dutchmen.com)

Visit us online to see all the Dutchmen brands, innovative models and spacious floor plans.



## MORE STANDARD FEATURES MORE VALUE

Dutchmen RVs turn more heads on the lot and in the campground than any other. Why? While other manufacturers offer features as options, Dutchmen tends to make those same features standard. Call it "bang for the buck," "more for your money," or simply "more value." We've built a reputation for bringing RV owners more standard features for less money for more than 25 years . . . and it's a reputation we plan to keep.



100%  
PRE-DELIVERY  
INSPECTION

At Dutchmen, quality is standard. Every single Dutchmen RV that comes off the line receives it's own pre-delivery inspection. Every unit undergoes a thorough 253-point check to ensure accurate measurements, fully-functional electronics and components.



THE INDUSTRY'S  
BEST  
RV WARRANTY

With this industry-best warranty, we take the guessing game out of what is and isn't covered. So, that means you don't have to wrangle over the details, because we deliver value by clearly outlining the major components we back during the first three years.



THE LEADER IN  
PARTS AND SERVICE

Replacement parts. Routine checkups. Expert advice. You name it and we've got it covered. When only the best RV services will suffice, our industry-leading parts and service department is ready to help you get back on the road - and stay there longer than ever before.

\*Length is defined as the distance from the centerline of hitch pin/coupler to rear bumper of trailer. \*\*Our weights represent how most units are built, inclusive of many commonly-ordered options. \*\*\*Fresh water capacity includes water heater capacity.

DISCLAIMER: Product information is as accurate as possible as of the date of brochure publication. All features, floor plans and specifications in this brochure are subject to change without notice. Please consult Dutchmen's website at [www.Dutchmen.com](http://www.Dutchmen.com) for current product information and specifications. Tow Vehicle Disclaimer. CAUTION: Owners of Dutchmen recreational vehicles are solely responsible for the selection and proper use of tow vehicles. All customers should consult with a motor vehicle manufacturer or their dealer concerning the purchase and use of suitable tow vehicles for Dutchmen products. Dutchmen disclaims any liability or damages suffered as a result of the selection, operation, use or misuse of a tow vehicle. DUTCHMEN'S LIMITED WARRANTY DOES NOT COVER DAMAGE TO THE RECREATIONAL VEHICLE OR THE TOW VEHICLE AS A RESULT OF THE SELECTION, OPERATION, USE OR MISUSE OF THE TOW VEHICLE. REFERENCE DUTCHMEN MANUFACTURING OWNERS MANUAL FOR LIMITED WARRANTY DETAILS. © 2020 Dutchmen 11-05-2019-ASTORIA-Printed in U.S.A.



ASTORIA

Fifth Wheels & Travel Trailers

