

SIERRA

LUXURY FIFTH WHEELS



SIERRA

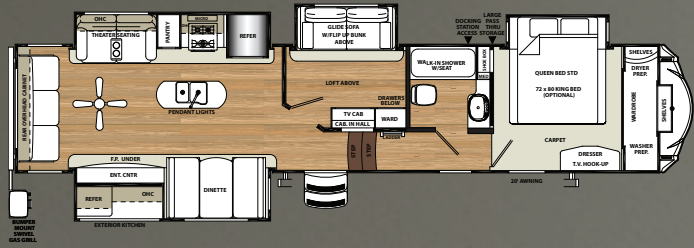
**LIFE HAS TAUGHT US THAT LOVE DOES
NOT CONSIST IN GAZING AT EACH OTHER
BUT IN LOOKING TOGETHER IN THE
SAME DIRECTION.**

— ANTOINE DESAINT-EXUPERY









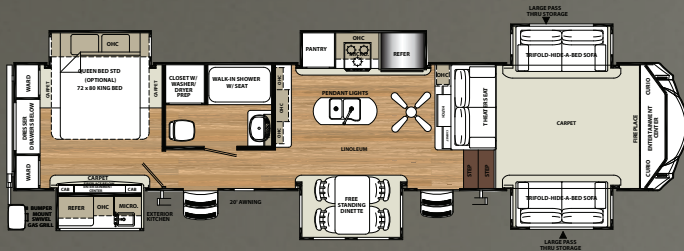
MULTI-FUNCTIONAL.

The 372LOK is the ultimate combination of functionality and design. This floorplan was designed for that customer that wants sleeping space without giving up true living area. With a large island kitchen, dinette, hide a bed sofa and entertainment center the 372LOK still provides a large entertaining area with a mid bunk and overhead loft. The perfect complement to this floorplan is the standard outside kitchen for all your grilling needs.

372LOK

VINO INTERIOR





INNOVATIVE.

The 379FLOK isn't your ordinary front living floorplan. This unit offers a 50" flatscreen TV in the upper deck and industry first standard outside kitchen. With six slides we were able to add more storage and more space in the master bedroom. Plumbed for a washer and dryer in the oversized bathroom with walk in shower this floorplan has all the amenities built in.

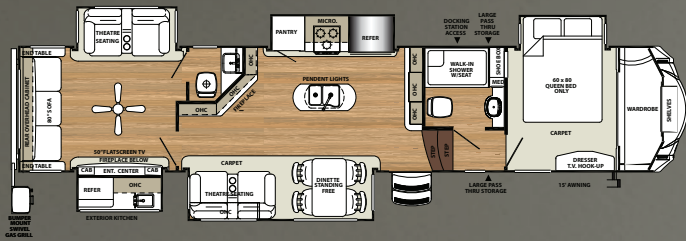
379FLOK

DUSK INTERIOR









UNIQUE.

The 387MKOK offers about as much as we could fit into this beautifully laid out floorplan. The rear den offers a half bath, theater seats, hide a bed sleeper sofa with a 50" flatscreen TV and fireplace below. The main living area offers theater seats, a free standing dinette, full floor to ceiling pantry and a customized entertainment area with fireplace. Don't forget the standard outside kitchen that is a must for any outdoor enthusiasts needs.

387MKOK

FAWN INTERIOR

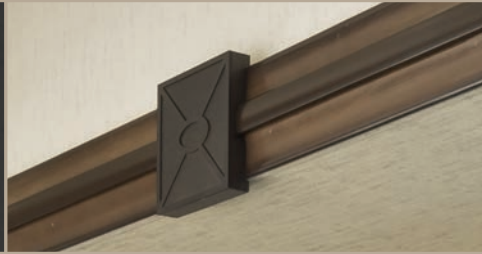




INTERIOR FEATURES



HIGH RISE FAUCET WITH UNDERMOUNT SINK AND PULL OUT SPRAYER.



THE UPGRADED AND INTRICATELY DETAILED SLIDE-OUT FASCIA.



THEATER SEATS WITH LED LIGHTING, HEAT AND MASSAGE AND CONSOLE STORAGE.



FULL EXTENSION, SOFT CLOSE BALL BEARING DRAWER GUIDES.



THE ELECTRIC FIREPLACE WARMS AND IS A GREAT FOCAL POINT FOR THE LIVING AREA.



MY RV ONE - 5 FUNCTION CONTROL ALLOWS YOU TO CONTROL AND MONITOR ALL YOUR RV SYSTEMS.



ENJOY THE COMFORT OF HOME WITH OUR EXCLUSIVE DENVER MATTRESS.



FLATSCREEN LED HDTV WITH PREMIUM SOUNDBAR AND DVD PLAYER.

CORIAN PREMIUM SOLID SURFACE KITCHEN COUNTERTOPS

20 CU. FT. STAINLESS STEEL FRENCH DOOR RESIDENTIAL REFRIGERATOR WITH 1,000 WATT INVERTER & BATTERY DISCONNECT

WIDE STANCE HYDRAULIC LANDING GEAR

ROLLER SHADES THROUGHOUT

BACKUP CAMERA PREP

MY RV ONE - 5 FUNCTION CONTROL

QUADRUPLE ENTRY STEP

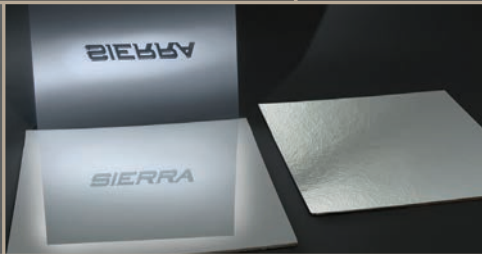
PREMIUM PLUS PACKAGE *(limited time offer)*



EXTERIOR FEATURES



THE COLOR MATCHED FIBERGLASS FRONT CAP FEATURES HIGH DEFINITION GRAPHICS AND LED SAFETY LIGHTS.



GEL COATED FIBERGLASS PROTECTS FROM UV RAYS AND PREVENTS YELLOWING AND CRACKING.



OUR DROP FRAME DESIGN ALLOWS FOR AN ABUNDANCE OF PASS THRU STORAGE SPACE.



SIERRA'S CONVENIENT OUTSIDE LIGHTED DOCKING STATION.



2 QUICK CONNECT SPRAY PORTS (ONE ON EACH SIDE) ARE GREAT FOR EASY CLEAN UP.



WIDE STANCE HYDRAULIC LANDING GEAR.



CONTEMPORARY ALUMINUM RIMS WITH E-RATED RADIAL TIRES. MOST SIERRA'S FEATURE 7000 LB. AXLES.



FULLY ENCLOSED UNDERBELLY PROTECTS YOUR COACH. IMPROVED AIRFLOW ALLOWS FOR A STURDY RIDE.

GOURMET KITCHEN



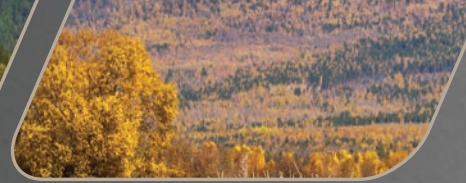
THE SIERRA GOURMET KITCHEN INCLUDES A 20 CU. FT. STAINLESS STEEL FRENCH DOOR REFRIGERATOR WITH BOTTOM FREEZER, MICROWAVE AND RANGE.

EXTERIOR KITCHEN



THE SIERRA EXTERIOR KITCHEN INCLUDES HOT AND COLD RUNNING WATER AND REFRIGERATOR. SOME MODELS ALSO INCLUDE A DROP DOWN LED HD TV.

(387MKOK exterior kitchen shown)



SIERRA CONSTRUCTION

THE SIERRA SUPERSTRUCTURE

The SIERRA has a Welded Aluminum Superstructure that is regarded as the Industry's finest, pictured below is the heavier gauge aluminum tubing used by SIERRA vs. the competitions lighter gauge aluminum.



A ROLLED ALUMINUM SIDED SKIRTING
E LAMINATED VACUUM BONDED ALUMINUM SIDEWALLS

B SAFETY GLASS TINTED WINDOWS (80%)

F E RATED RADIAL TIRES

C DUAL ZONE DUCTED 15K BTU AIR CONDITIONING

G EURO STYLE QUAD ALUMINUM STEP

D DEXTER AXLES WITH AUTO ADJUST BRAKES

H COLOR MATCHED SEAMLESS RUBBER ROOF (12 YR. WARRANTY)

I 2" BLOCK FOAM INSULATION

J STAIN RESISTANT CARPET W/ PADDING

K 3/8" ROOF DECKING (FULL WALK-ON ROOF)

L 5/8" TONGUE AND GROOVE PLYWOOD FLOORING

M FULLY ENCLOSED UNDERBELLY

N I-BEAM POWDER-COATED FRAME W/ RUST INHIBITOR

O DROP FRAME

P POWER FRONT JACKS WITH QUICK RELEASE SNAP PINS (HYDRAULIC JACKS OPTIONAL)

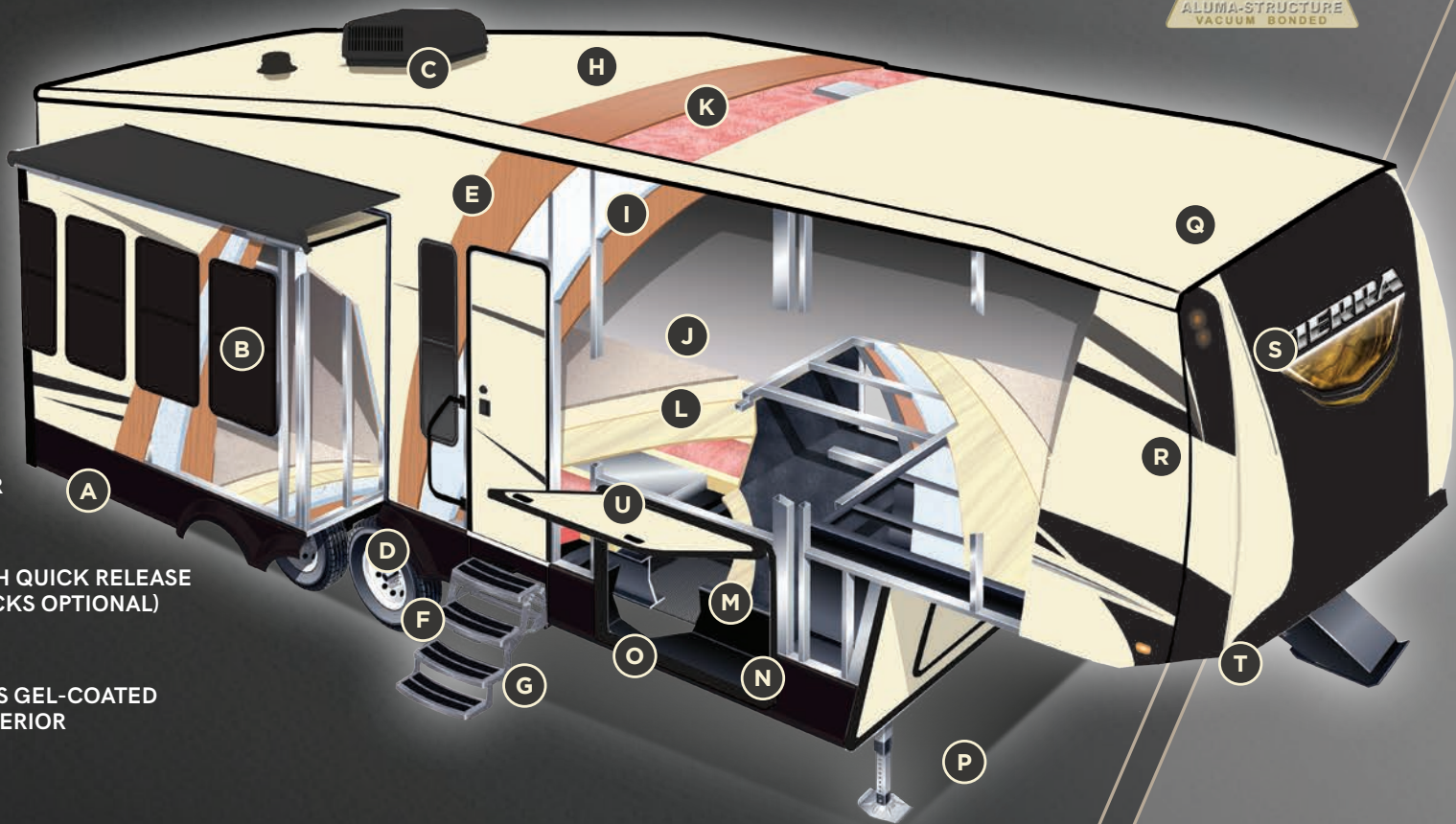
Q SLEEK RADIUS ROOF

R COLOR MATCH HIGH GLOSS GEL-COATED COLORED FIBERGLASS EXTERIOR

S PAINTED GEL-COAT FIBERGLASS TWO TONE FRONT CAP (STANDARD)

T IMPROVED FRONT CAP FOR SHARPER TURNING RADIUS

U INSULATED SLAM LOCK BAGGAGE DOORS



SIERRA DECORS, STANDARDS & OPTIONS

EXTERIOR FEATURES

- Color match high gloss gel coated colored exterior fiberglass
- Painted two tone aerodynamic fiberglass front cap with improved turning radius
- Docking station: easy winterization, hot and cold spray port, black tank flush, pull valves for tanks
- Enclosed and heated dump valves
- Large tinted windows with 80/20 UV prohibitor
- Euro style quad aluminum step
- "One Touch" Dometic® electric awning with LED light strip
- Power front jacks with spring loaded snap pins
- 16" Radial tires-E Rated
- Automotive-style fender skirts
- Hitch light
- Exterior kitchen (per floorplan)
- Porch light with interior switch
- 30 lb. double LP tanks with auto change over
- Roof ladder
- 2 LED lighted exterior speakers
- Rain gutters with extra long drip spouts (prevents black streaking)
- Insulated heavy duty slam lock baggage doors
- Exterior foldable grab handle
- Unobstructed drop frame pass through storage area with cable jacks and 110V outlet
- 2 spray ports with 25' hose (one on each side)
- Upgraded aluminum rims
- 7,000 Lb. axles
- Friction hinge entry door

INTERIOR FEATURES

- 84" interior height with 6'4" slide heights
- Stainless steel appliances
- Beauflor® rustic wood plank linoleum
- Decorative backsplash
- Three color coordinated interiors (Dusk, VINO, Fawn)
- Soft close full extension drawer glides
- Hidden hinged cabinet doors with soft close full extension drawer glides
- Stainless steel double bowled under mounted kitchen sink
- Washer/Dryer prep
- Knotty alder handmade cabinetry with screwed lumber core stile construction
- LED lighting throughout

- Residential countertops
- Recessed residential lighting
- Colored shower surround with etched tile pattern
- Upgraded adjustable shower head with shelf
- Theater seating with heat/massage plus accent LED lighting and swivel TV trays (per floorplan)
- Accent paneling in slideouts
- Accent lighting over dinette
- LED lighting at islands
- Nightlights on fifth wheel steps
- Walk-in shower with seat (most models)
- Mocha accent crown molding over kitchen cabinets
- Extra large picture windows throughout
- Vented side windows in slideouts
- TV antenna with booster
- Solid wood drawer fronts with birch sides
- Upgraded raised panel cabinet doors with designer rails
- Bedroom slideout fascia
- LED lighted headboard
- Teddy Bear® bunk mats
- 40" flat screen LED HD TV
- Premium soundbar with built in flush mounted DVD player
- Designer window treatment accented per decor
- 9 cu. ft. stainless refrigerator
- Ceiling fan
- Tri-fold hide-a-bed sofa
- Glider sofa with USB/110 outputs (standard in all off door bunk slides)
- Residential stain resistant carpet
- Quilted bedspread
- Trash receptacle in kitchen

APPLIANCES/SYSTEMS

- 15K A/C with Quick Cool
- 9 cu. ft. refrigerator
- Dual zone thermostat for living room and bedroom A/C
- Floor ducted 35,000 BTU furnace
- OTR stainless steel microwave
- Three burner high output range with oven
- Interior monitor panel for holding tanks
- Flush floor hydraulic slideouts (per floorplan)
- Dual battery prep
- Satellite and cable hookup with RG-6 cable for high quality picture
- Porcelain foot flush toilets

- 10 Gal. DSI water heater
- 65 Amp converter
- EZ Breeze® power fan in bathroom

CONSTRUCTION

- Welded aluminum-framed, vacuum bonded laminated superstructure
- Drop frame
- 2" x 3" floor joists 12" on center
- 5/8" tongue & groove plywood floor decking
- 3/8" roof decking (full walk-on roof)
- Cambered powder coated frame with rust prohibitor
- Fully enclosed underbelly
- 5" truss roof rafters
- R-10E sidewall construction
- Laminated sidewalls
- Laminated slide-out walls

POPULAR OPTIONS

- Roto Flex hitch pin
- Electric rear jacks
- Tri-fold hide-a-bed with hinged bunk overhead (bunk slides)
- Recliners IPO theater seating (where available)
- 6 point hydraulic leveling system
- Solid surface countertops in kitchen
- Free-standing dinette with 4 chairs
- Washer and dryer (per floorplan)
- Sofa IPO bottom bunk (per floorplan)
- 15k air conditioner-bedroom
- Fantastic fan with rain sensor (bunk room, kitchen, living room, bathroom, half bath)
- 12 Volt heated holding tanks
- Equaflex® equalizer system
- Beauflor® tile look linoleum

- Central vacuum
- R-38E insulation
- Slide room awnings (all slides)
- King Bed (Where available)

FOR YOUR SAFETY

- Smoke alarm
- Fire extinguisher
- Breakaway switch (battery hook-up required)
- Dead-bolt lock on entry door
- LP/CO2 gas detector
- Fire escape windows

POLAR TECH PACKAGE (OPTIONAL)

- Thermal pane windows
- Heated holding tanks
- R-38E roof & all floors insulation
- 40K BTU furnace

PREMIUM PLUS PACKAGE (limited time offer) (OPTIONAL)

- Premium Corian solid surface kitchen countertops
- Wide stance hydraulic landing gear
- 20 cu. ft. stainless French door residential refer with 1,000 watt inverter and battery disconnect
- Roller shades throughout
- Euro Style Quad Aluminum Step (Both main and second entry doors standard)
- Furrion Oven with LED knobs
- Back Up Camera Prep
- My RV One (5 function electronic control pad)

SIERRA SIGNATURE PACKAGE

- 9 Cu ft stainless refer
- Residential stain resistant carpet
- Stainless appliance package
- Slam lock baggage doors
- Denver pillowtop mattress
- 15K air conditioner w/prep for 2nd A/C
- 30" OTR microwave
- Residential pullout kitchen faucet
- Backsplash
- 10 Gal. G/E water heater w/DSI
- Soft close residential drawer and cabinet doors
- 16" Spare tire kit
- Docking station
- Aluminum wheels w/7K axles
- High gloss color matched gelcoated Fiberglass exterior
- Washer/dryer prep
- 40" Flat screen television
- Water filter system
- Premium sound bar with built in DVD player
- Rustic wood Beauflor™ flooring
- EZ breeze power fan in bathroom(s)
- Aerodynamic two tone painted front Cap
- Tri fold hide-a-bed sofa
- "One touch" Dometic electric awning with LED light strip
- LED interior lighting throughout

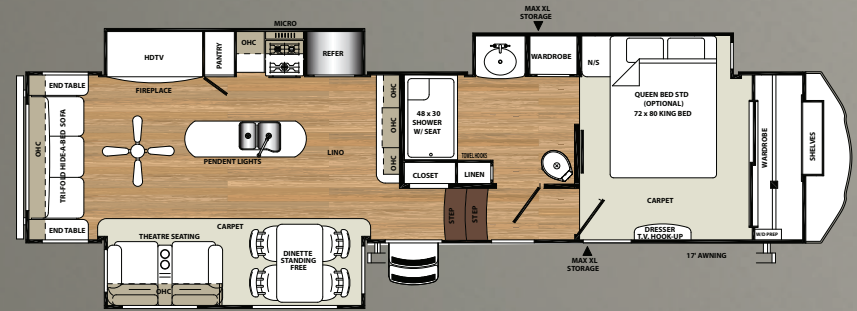
DUSK
INTERIOR

VINO
INTERIOR

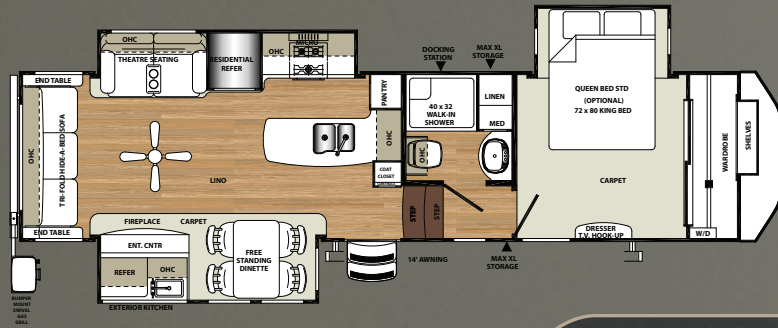
FAWN
INTERIOR

SIERRA

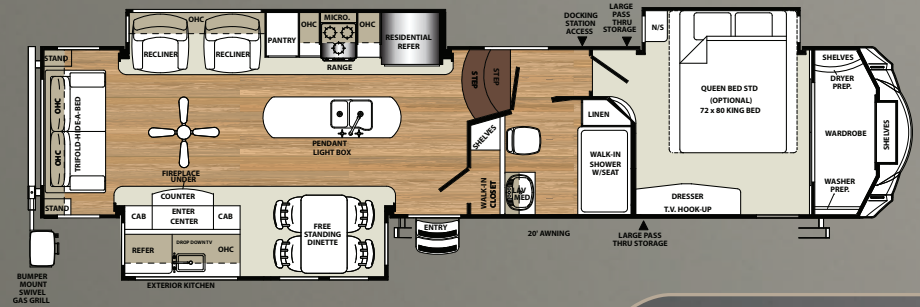
FLOORPLANS



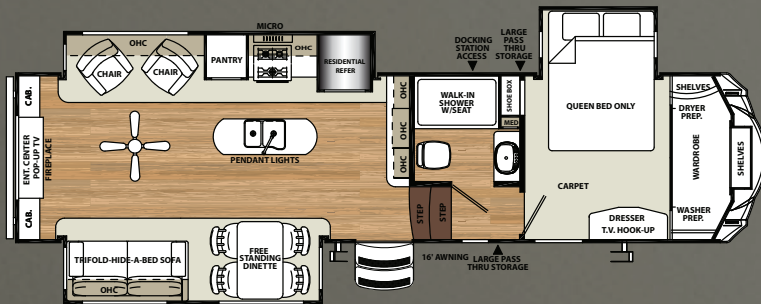
357RE



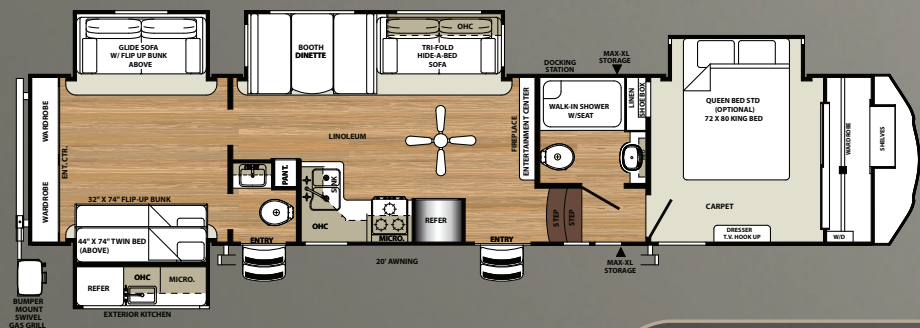
345RLOK



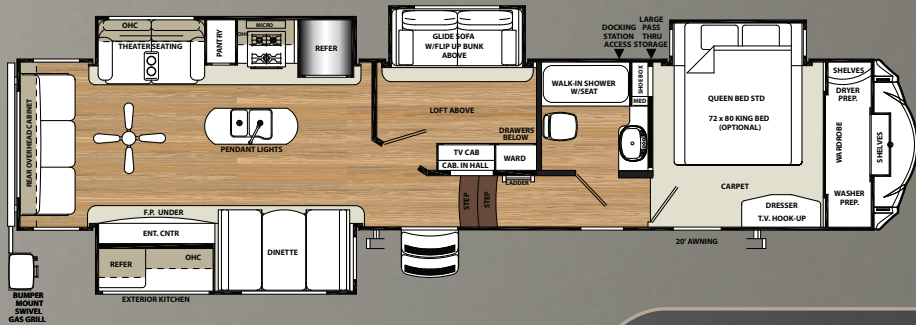
36ROK



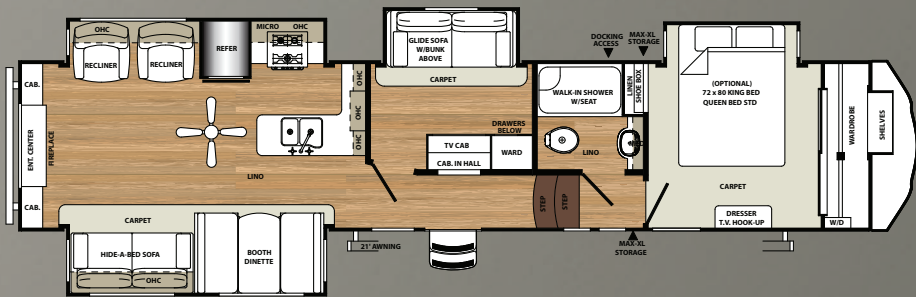
354RET



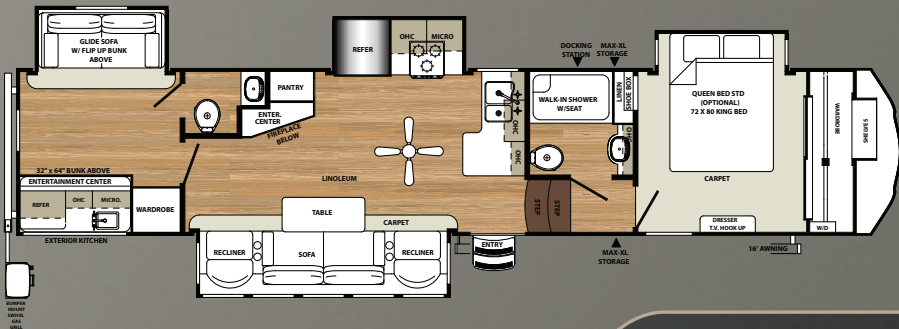
369SAQB



372LOK



373REBH



375BHOK



SPECIFICATIONS

MODEL	345RLOK	354RET	357RE	36ROK	369SAQB	372LOK	373REBH	375BHOK
HITCH	2,237	2,080	2,319	2,595	2,197	2,474	1,865	2,180
UVW	10,883	11,172	11,573	12,457	13,103	12,962	12,690	12,669
GVWR	15,500	15,500	15,500	15,500	15,500	15,500	15,500	15,500
CARGO	4,617	4,328	3,927	3,043	2,397	2,538	2,810	2,831
LENGTH	35'3"	34'11"	37'11"	40'4"	41'2"	41'9"	41'6"	41'10"
HEIGHT	13'2"	13'2"	13'2"	13'2"	13'2"	13'2"	13'2"	13'2"
AWNING	14'	16'	20'	19'	20'	20'	21'	16'
GRAY	134	104	104	134	134	134	134	149
BLACK	52	52	52	52	104	52	52	104
FRESH	60	60	60	60	60	60	60	60

Please see back cover for more information regarding weights.

SIERRA

FLOORPLANS

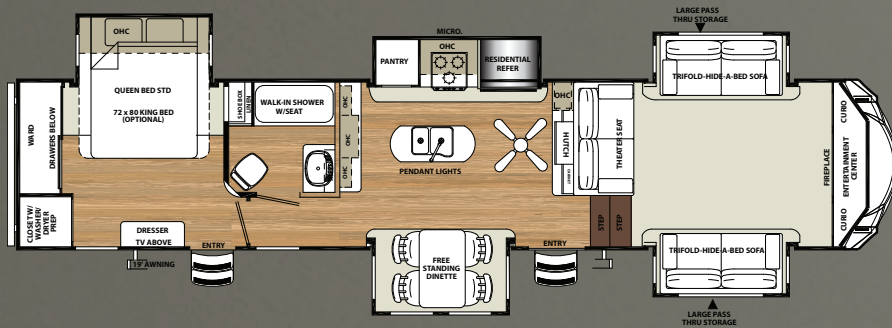
EXTERIOR KITCHEN

The Sierra exterior kitchen includes hot and cold running water and refrigerator. Some models also include a drop down LED HD TV.

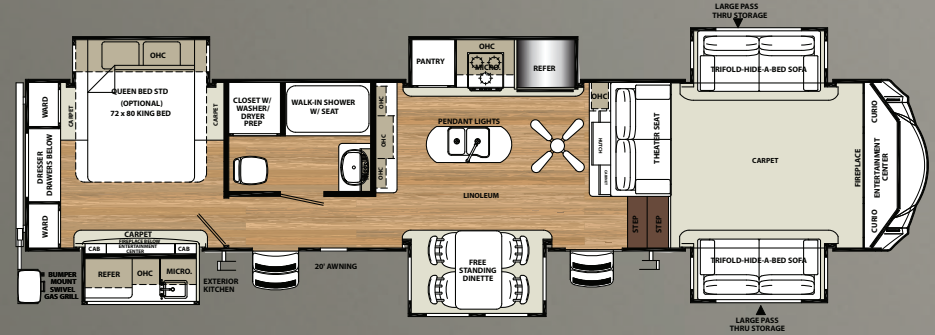
INCLUDED ON THESE MODELS:

345RLOK, 36ROK, 369SAQB, 372LOK, 375BHOK, 378FB, 379FLOK, 38FKOK, 381RBOK, 384QBOK, 387MKOK

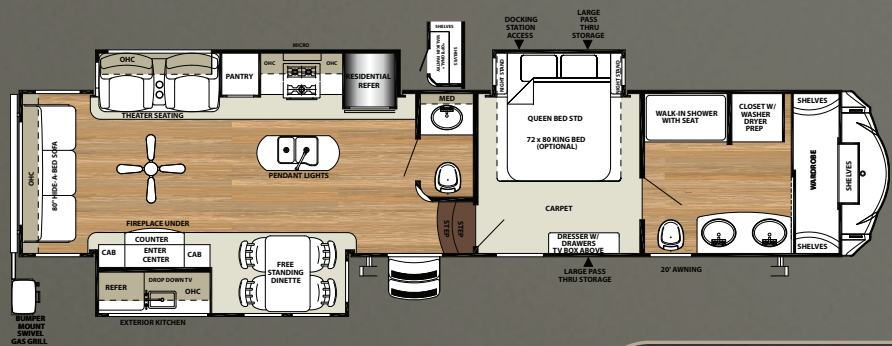
(387MKOK exterior kitchen shown)



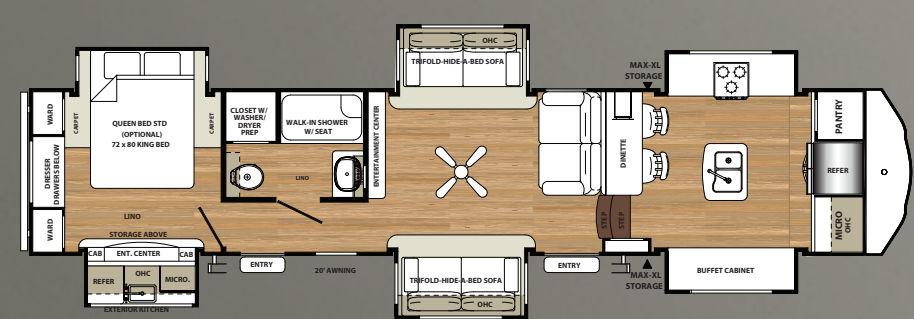
377FLIK



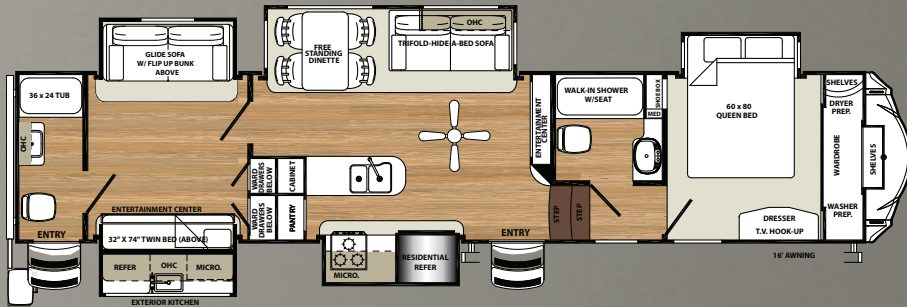
379FLOK



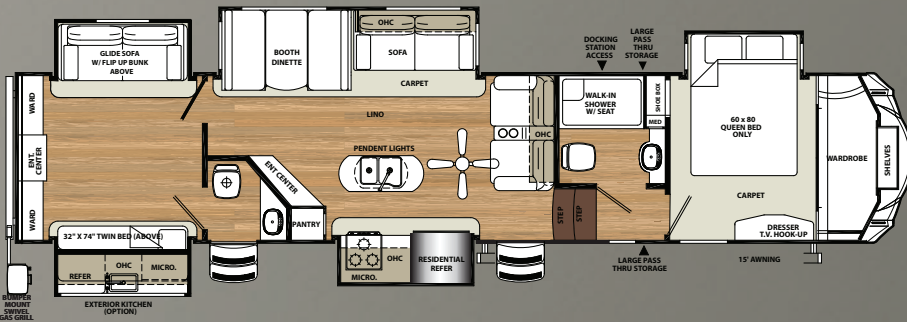
378FB



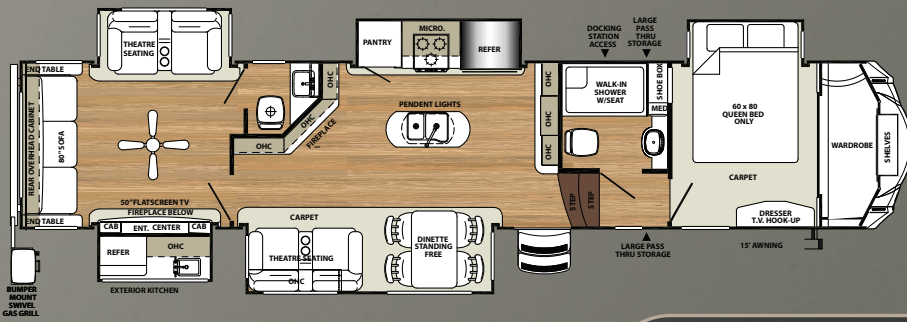
38FKOK



381RBOK



384QBOK



387MKOK



SPECIFICATIONS

MODEL	377FLIK	378FB	379FLOK	38FKOK	381RBOK	384QBOK	387MKOK
HITCH	2,235	2,096	2,495	2,256	2,519	2,261	2,537
UVW	12,283	12,455	12,819	12,823	13,131	13,132	13,535
GVWR	15,500	15,500	15,500	15,500	15,500	15,500	15,500
CARGO	3,217	3,045	2,681	2,677	2,369	2,368	1,965
LENGTH	40'7"	41'3"	41'9"	41'8"	41'8"	41'8"	41'7"
HEIGHT	13'2"	13'2"	13'2"	13'2"	13'2"	13'2"	13'2"
AWNING	21'	20'	20'	20'	16'	15'	15'
GRAY	134	104	134	134	134	134	149
BLACK	52	52	52	52	82	104	82
FRESH	60	60	60	60	60	60	60

Please see back cover for more information regarding weights.

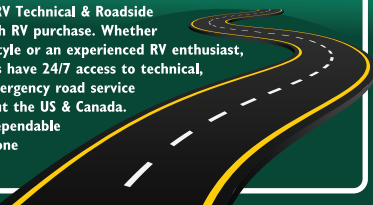
24/7 EMERGENCY ROADSIDE ASSISTANCE

For a worry-free ownership experience

Coach-Net[®]

RV Technical & Roadside Assistance

Forest River includes one year of Coach-Net RV Technical & Roadside Assistance with each RV purchase. Whether new to the RV lifestyle or an experienced RV enthusiast, Forest River owners have 24/7 access to technical, operational and emergency road service coverage throughout the US & Canada. Coach-Net's fast, dependable service is just a phone call away.



FREE MEMBERSHIP

to Forest River Owners' Group

www.forestriverfrog.com



PRE-DELIVERY INSPECTION FACILITY

20,000 square feet of quality assurance. The bare essentials for a premium product. This state-of-the-art facility gives immediate daily feedback to production for quality assurance in every unit built.

CUSTOMER SATISFACTION



www.ForestRiverBuyLocal.com

GVWR (GROSS VEHICLE WEIGHT RATING) - IS THE MAXIMUM PERMISSIBLE WEIGHT OF THE UNIT WHEN FULLY LOADED. IT INCLUDES ALL WEIGHTS, INCLUSIVE OF ALL FLUIDS, CARGO, OPTIONAL EQUIPMENT AND ACCESSORIES. FOR SAFETY AND PRODUCT PERFORMANCE DO NOT EXCEED THE GVWR.

GAWR (GROSS AXLE WEIGHT RATING) - IS THE MAXIMUM PERMISSIBLE WEIGHT, INCLUDING CARGO, FLUIDS, OPTIONAL EQUIPMENT AND ACCESSORIES THAT CAN BE SAFELY SUPPORTED BY A COMBINATION OF ALL AXLES.

UVW (UNLOADED VEHICLE WEIGHT)* - IS THE TYPICAL WEIGHT OF THE UNIT AS MANUFACTURED AT THE FACTORY. IT INCLUDES ALL WEIGHT AT THE UNIT'S AXLE(S) AND TONGUE OR PIN AND LP GAS. THE UVW DOES NOT INCLUDE CARGO, FRESH POTABLE WATER, ADDITIONAL OPTIONAL EQUIPMENT OR DEALER INSTALLED ACCESSORIES.

*ESTIMATED AVERAGE BASED ON STANDARD BUILD OPTIONAL EQUIPMENT.

CCC (CARGO CARRYING CAPACITY)** - IS THE AMOUNT OF WEIGHT AVAILABLE FOR FRESH POTABLE WATER, CARGO, ADDITIONAL OPTIONAL EQUIPMENT AND ACCESSORIES. CCC IS EQUAL TO GVWR MINUS UVW. AVAILABLE CCC SHOULD ACCOMMODATE FRESH POTABLE WATER (8.3 LBS PER GALLON). BEFORE FILLING THE FRESH WATER TANK, EMPTY THE BLACK AND GRAY TANKS TO PROVIDE FOR MORE CARGO CAPACITY.

** ESTIMATED AVERAGE BASED ON STANDARD BUILD OPTIONAL EQUIPMENT

EACH FOREST RIVER RV IS WEIGHED AT THE MANUFACTURING FACILITY PRIOR TO SHIPPING. A LABEL IDENTIFYING THE UNLOADED VEHICLE WEIGHT OF THE ACTUAL UNIT AND THE CARGO CARRYING CAPACITY IS APPLIED TO EVERY FOREST RIVER RV PRIOR TO LEAVING OUR FACILITIES.

THE LOAD CAPACITY OF YOUR UNIT IS DESIGNATED BY WEIGHT, NOT BY VOLUME, SO YOU CANNOT NECESSARILY USE ALL AVAILABLE SPACE WHEN LOADING YOUR UNIT.

ALL INFORMATION CONTAINED IN THIS BROCHURE IS BELIEVED TO BE ACCURATE AT THE TIME OF PUBLICATION. HOWEVER, DURING THE MODEL YEAR, IT MAY BE NECESSARY TO MAKE REVISIONS AND FOREST RIVER, INC., RESERVES THE RIGHT TO MAKE ALL SUCH CHANGES WITHOUT NOTICE, INCLUDING PRICES, COLORS, MATERIALS, EQUIPMENT AND SPECIFICATIONS AS WELL AS THE ADDITION OF NEW MODELS AND THE DISCONTINUANCE OF MODELS SHOWN IN THIS BROCHURE. THEREFORE, PLEASE CONSULT WITH YOUR FOREST RIVER DEALER AND CONFIRM THE EXISTENCE OF ANY MATERIALS, DESIGN OR SPECIFICATIONS THAT ARE MATERIAL TO YOUR PURCHASE DECISION.



SIERRA

YOUR LOCAL SIERRA DEALER



Learn More

Scan this barcode using a QR Reader on your smart phone to learn more about Forest River.



A Berkshire Hathaway company.

Forest River, Inc.
2012 Century Dr.
Goshen, IN 46528
(574) 389-4600
www.forestriverinc.com/Sierra
www.forestriveraccessories.com



© 2018- Sierra - a division of Forest River Inc.,
A Berkshire Hathaway company