

Sandpiper



Find us on Facebook
keyword "Sandpiper RV's"

LUXURY FIFTH WHEELS



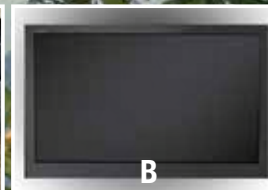


**LISTEN TO THE VOICE OF NATURE,
FOR IT HOLDS TREASURE FOR YOU.**
-NATIVE AMERICAN PROVERB

1

Sandpiper

SANDPIPER FIFTH WHEELS ARE DESIGNED FROM THE GROUND UP TO GIVE YOU RESIDENTIAL COMFORT WHILE YOU TRAVEL. NOT ONLY IS EVERY SANDPIPER FULL OF GREAT FEATURES, EVERY UNIT IS BUILT WITH DURABILITY AND FUNCTIONALITY IN MIND.



ULTIMATE PACKAGE (LIMITED TIME OFFER)

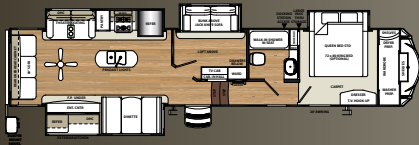
- A WIDE STANCE POWER FRONT HYDRAULIC JACKS, 14 TIMES FASTER THAN ELECTRIC JACKS!
- B 32" BEDROOM TV WITH SWING ARM MOUNT
- C 20 CUBIC FOOT RESIDENTIAL REFRIGERATOR/FREEZER with 1000 WATT INVERTER AND BATTERY DISCONNECT
- D SOLID SURFACE COUNTERTOPS
- E ROLLER SHADES THROUGHOUT
- F QUADRUPLE ENTRY STEP





372LOK

BRANDY DECOR



Sandpiper

AT HOME ON THE ROAD.

The 372LOK is the ultimate floorplan for the family with children that doesn't want to give up their valuable living room area. Equipped with theatre seating, hide-a-bed, an LED HDTV, premium sound bar and Sony DVD player this floorplan delivers the true comfort of home. Don't forget that mom and dad's retreat is the master suite at the other end of the unit, while the kids have an awesome loft and their own bunkroom.





5

FEATURES

HI RISE FAUCET. SANDPIPER'S HI-RISE FAUCET WITH SPRAYER IS BOTH FUNCTIONAL AND STYLISH.

CONVENIENT FEATURES. OUR STAINLESS STEEL DIGITAL MICROWAVE IS A GREAT WAY TO HEAT UP A CUP OF TEA OR MAKE A QUICK SNACK.

RESIDENTIAL FINISHES. ALL SANDPIPER KITCHENS FEATURE MOCHA ACCENT CROWN MOLDING OVER THE CABINETS.

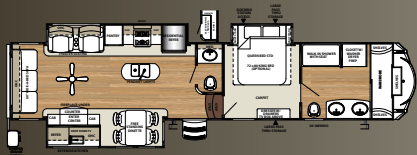
PENDANT LIGHTING. OUR PENDENT LIGHTING FIXTURES ARE JUST ONE MORE EXAMPLE OF OUR COMMITMENT TO TRUE RESIDENTIAL DESIGN.





378FB

BRANDY DECOR



Sandpiper

THOUGHTFUL DESIGN.

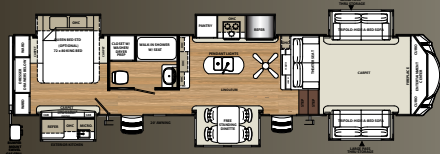
The 378FB is the ultimate couples coach. The master bath is conveniently located in the front of the unit and offers his and her sinks, a walk in shower and a mirrored closet with enough room to store a washer/dryer! This great coach also features a standard exterior kitchen with drop down LED HDTV.





379FLOK

CHESTNUT DECOR



Sandpiper

RESIDENTIAL STYLING.

The 379FLOK leaves nothing out when it comes to entertainment. While you're inside enjoying the abundant living area, notice the seating is directly across from the LED HDTV. In the kitchen the storage is endless with more countertop space than ever offered before. All Sandpipers feature stainless steel appliances to complete the residential design of the interior.



9



SECOND BATH



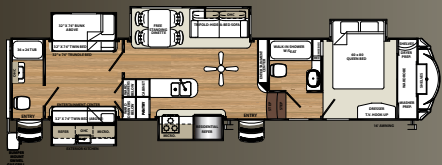
MASTER BATH





381RBOK

CREAM DECOR



Sandpiper

FAMILY FRIENDLY.

The 381RBOK is one of the best bunkhouse models ever built. It offers a rear bathroom with tub that is attached to the kids bedroom. The bedroom for mom and dad is located in the front of the unit and has a bathroom attached with a walk-in shower. In the middle of the unit the family can come together in the beautiful kitchen for dinner.





A



B



C



D



E



F



G



H



I



J



K



L



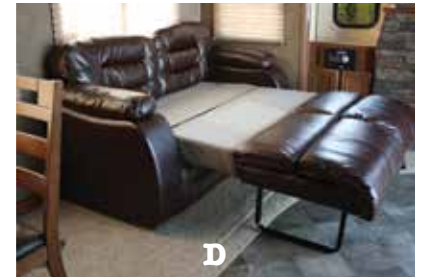
11

EXTERIOR FEATURES

- A** 110V OUTLET AND CABLE OUTLET CONVENIENTLY LOCATED IN THE PASS-THRU STORAGE AREA
- B** GEL COAT FIBERGLASS PROTECTS FROM UV RAYS AND PREVENTS YELLOWING AND CRACKING
- C** SANDPIPER'S LIGHTED DOCKING STATION
- D** ENTRY DOOR WINDOW WITH INTEGRATED NIGHT SHADE

- E** HEATED AND ENCLOSED UNDERBELLY PROTECTS YOUR COACH AND IMPROVED AIRFLOW ALLOWS FOR A STURDIER RIDE
- F** INSULATED HEAVY DUTY SLAM LOCK BAGGAGE DOORS
- G** SANDPIPER'S CONTROL PANEL ALLOWS YOU TO MONITOR TANKS AND OTHER SYSTEMS QUICKLY AND EASILY
- H** DRIP RAIL WITH EXTRA LONG DRIP SPOUTS HELP PREVENT BLACK STREAKING

- I** OPTIONAL HYDRAULIC WIDE STANCE POWER FRONT JACKS
- J** THE QUICK CONNECT SPRAY PORT IS GREAT FOR EASY CLEAN UP
- K** CONTEMPORARY ALUMINUM RIMS WITH E-RATED RADIAL TIRES
- L** CONTROL THE TEMPERATURE WITH THE DUAL ZONE DOMETIC® THERMOSTAT



INTERIOR FEATURES

- A** HANDCRAFTED FASCIA GIVES THE SLIDE-OUT A DISTINGUISHED LOOK.
- B** RESIDENTIAL MEMORY FOAM MATTRESS
- C** LED HDTV WITH PREMIUM SOUNDBAR AND SONY DVD PLAYER
- D** THE TRI-FOLD HIDE-A-BED SOFA OFFERS YOU AND YOUR GUESTS MORE SLEEPING OPTIONS

- E** CONTEMPORARY CEILING FAN.
- F** REAL WOOD DRAWERS ON SOFT CLOSE, FULL EXTENSION, BALL BEARING DRAWER GUIDES
- G** ENJOY THE WARMTH AND COMFORT OF THE ELECTRIC FIREPLACE.
- H** MOCHA ACCENTED CROWN MOLDING GIVES THE SANDPIPER KITCHEN A TRULY RESIDENTIAL FINISH.

- I** THE SANDPIPER SIGNATURE PACKAGE INCLUDES STAINLESS STEEL APPLIANCES.
- J** CONTEMPORARY MASTER BEDROOM HEADBOARD WITH INTEGRATED LED LIGHTING
- K** THEATER SEATING WITH FOOTRESTS, HEAT AND MASSAGE, LED LIGHTING AND CONSOLE STORAGE. (PER FLOORPLAN).
- L** PORCELAIN FOOT FLUSH TOILET, EASY TO USE, EASY TO CLEAN.

STANDARDS AND OPTIONAL FEATURES

EXTERIOR FEATURES

- Color match high gloss gel coated colored exterior fiberglass
- Painted two tone aerodynamic fiberglass front cap with improved turning radius
- Entrance door(s) with integrated night shade
- Docking station: easy winterization, hot and cold spray port, black tank flush, pull valves for tanks
- Enclosed and heated dump valves
- Large tinted windows with 80/20 UV prohibitor
- Hickory Springs® radius triple steps with 9" riser (no pinched fingers)
- "One Touch" Dometic® electric awning with LED light strip
- Power front jacks with spring loaded snap pins
- 16" Radial tires-E Rated
- Automotive-style fender skirts
- Hitch light
- Exterior kitchen (per floorplan)
- Porch light with interior switch
- 30 lb. double LP tanks with auto change over
- Roof ladder
- 2 LED lighted exterior speakers
- Rain gutters with extra long drip spouts (prevents black streaking)
- Insulated heavy duty slam lock baggage doors
- Exterior foldable grab handle
- Unobstructed pass-through storage area with cable jacks and 110V outlet
- 2 spray ports with 25' hose (one on each side)
- Upgraded aluminum rims
- 7,000 Lb. axles
- Friction hinge entry door

INTERIOR FEATURES

- 84" interior height with 6'4" slide heights
- Stainless steel appliances
- Beauflor® rustic wood plank linoleum
- Decorative backsplash
- Four color coordinated interiors (Chestnut, Cream, Pecan, Brandy)
- Soft close full extension drawer glides
- Stone cast under mounted kitchen sink
- Washer/Dryer prep
- Delight Maple handmade cabinetry with screwed lumber core stile construction
- LED lighting throughout
- Residential countertops
- Recessed residential lighting

- Colored shower surround with etched tile pattern
- Upgraded adjustable shower head with shelf
- Theater seating with heat/massage (per floorplan)
- Accent paneling in slideouts
- Accent lighting over dinette
- LED lighting at islands
- Nightlights on fifth wheel steps
- Walk-in shower with seat (most models)
- Mocha accent crown molding over kitchen cabinets
- Extra large picture windows throughout
- Vented side windows in slideouts
- TV antenna with booster
- Solid wood drawer fronts with birch sides
- Upgraded raised panel cabinet doors with designer rails
- Bedroom slideout fascia
- LED lighted headboard
- Teddy Bear® bunk mats
- 40" flat screen LED HD TV
- Premium soundbar with Sony® DVD player
- Designer window treatment accented per decor
- 9 cu. ft. stainless refrigerator
- Ceiling fan
- Tri-fold hide-a-bed sofa
- Residential stain resistant carpet
- Quilted bedspread
- Trash receptacle in kitchen

APPLIANCES/SYSTEMS

- 15K A/C with Quick Cool
- Second A/C prep (15K)
- 9 cu. ft. refrigerator
- Dual zone thermostat for living room and bedroom A/C
- Floor ducted 35,000 BTU furnace
- OTR stainless steel microwave
- Three burner high output range with 22" oven
- Interior monitor panel for holding tanks
- Flush floor hydraulic slideouts (per floorplan)
- Dual battery prep
- Satellite and cable hookup with RG-6 cable for high quality picture
- Porcelain foot flush toilets
- 10 Gal. DSI water heater
- 65 Amp converter
- EZ Breeze® power fan in bathrooms

CONSTRUCTION

- Welded aluminum-framed, vacuum bonded laminated superstructure
- Laminated and fully insulated bathroom floor deck
- 2" x 3" floor joists 12" on center
- 5/8" tongue & groove plywood floor decking
- 3/8" roof decking (full walk-on roof)
- Cambered powder coated frame with rust prohibitor
- Fully enclosed heated underbelly
- 5" truss roof rafters
- R-10E sidewall construction
- Laminated sidewalls
- Laminated slide-out walls

FOR YOUR SAFETY

- Smoke alarm
- Fire extinguisher
- Breakaway switch (battery hook-up required)
- Dead-bolt lock on entry door
- LP/CO₂ gas detector
- Fire escape windows

POPULAR OPTIONS

- Hydraulic front jacks
- Roto Flex hitch pin
- Electric rear jacks
- Tri-fold hide-a-bed with hinged bunk overhead (bunk slides)
- Recliners IPO theater seating (where available)
- 6 point hydraulic leveling system
- King bed (N/A 381RBOK, 343RSOK)
- Solid surface countertops in kitchen
- Free-standing dinette with 4 chairs (365SAQB, 371REBH)
- Party Lounge with footrest and hide-a-bed sofa (365SAQB, 371REBH)
- Washer and dryer (per floorplan)
- Sofa IPO bottom bunk (per floorplan)
- Second air conditioner-bedroom
- Fantastic fan with rain sensor (bunk room, kitchen, living room, bathroom, half bath)
- 12 Volt heated holding tanks
- Equaflex® equalizer system
- Party couch dinette
- Beauflor® tile look linoleum
- Central vacuum
- R-38E insulation
- Quad entry steps
- Slide room awnings (all slides)
- Rear manual awning (360PDEK only)
- Screen room (360PDEK only)

POLAR TECH PACKAGE

- Thermal pane windows
- Heated holding tanks
- R-38E roof & all floors insulation
- 40K BTU furnace
- Double fiberglass insulation in roof & floor

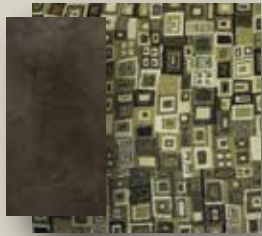
ULTIMATE PACKAGE (limited time offer)

- Premium solid surface kitchen countertops
- Quad entry step (main door)
- Wide stance hydraulic landing gear
- 20 cu. ft. stainless French door residential refer with 1,000 watt inverter and battery disconnect
- Roller shades throughout
- 32" bedroom TV on swing arm

SANDPIPER SIGNATURE PACKAGE

- 9 Cu ft stainless refer
- Residential stain resistant carpet
- Stainless appliance package
- Slam lock baggage doors
- Serta memory foam mattress
- 15K air conditioner w/prep for 2nd A/C
- 30" OTR microwave
- Residential pullout kitchen faucet
- Backsplash
- 10 Gal. G/E water heater w/DSI
- Soft close residential drawers
- 16" Spare tire kit
- Docking station
- Aluminum wheels w/7K axles
- High gloss color matched gelcoated Fiberglass exterior
- Washer/dryer prep
- 40" Flat screen television
- Water filter system
- Premium sound bar with Sony DVD Player
- Rustic wood Beauflor™ flooring
- EZ breeze power fan in bathroom(s)
- Aerodynamic two tone painted front Cap
- Tri fold hide-a-bed sofa
- One touch™ dometic electric awning W/LED light strip"
- LED interior lighting throughout

DECOR OPTIONS



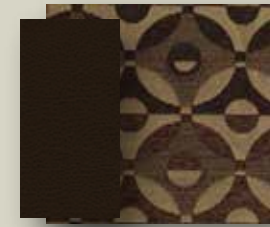
CHESTNUT INTERIOR



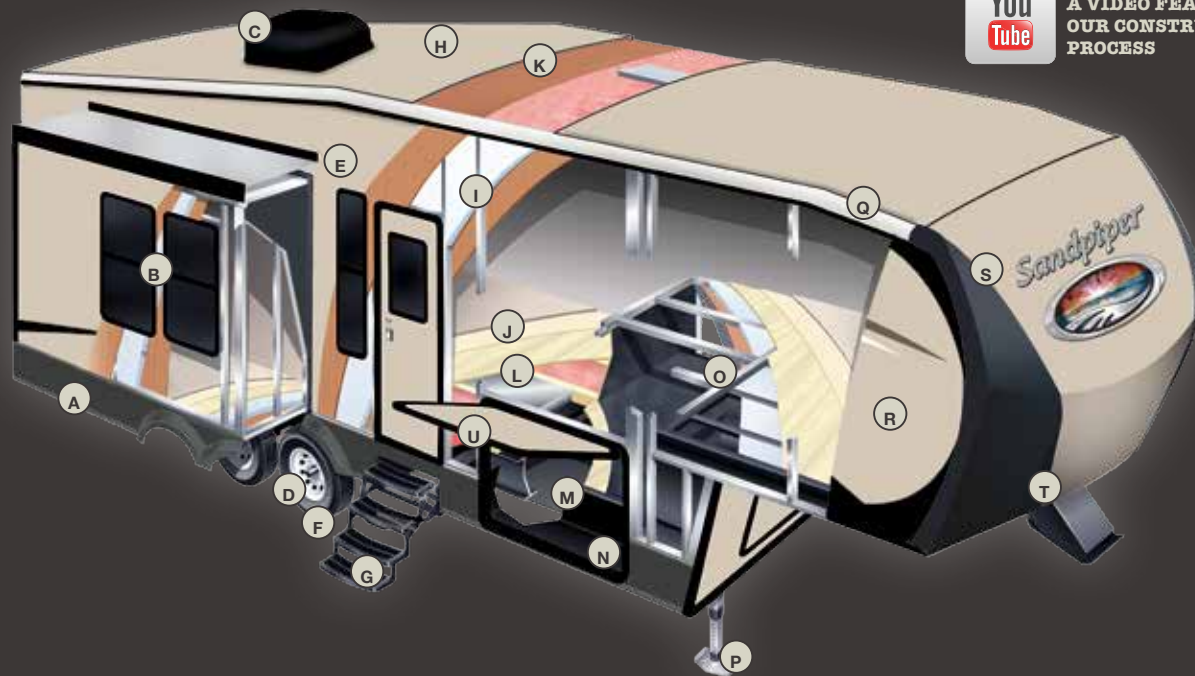
CREAM INTERIOR



PECAN INTERIOR



BRANDY INTERIOR



SEARCH YOUTUBE FOR
A VIDEO FEATURING
OUR CONSTRUCTION
PROCESS

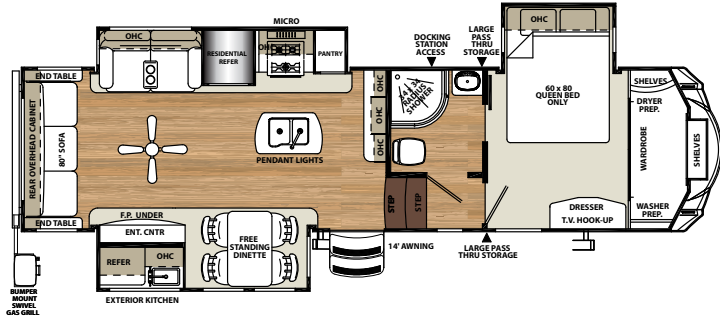
CONSTRUCTION

- A ROLLED ALUMINUM SIDE SKIRTING
- B TINTED SAFETY GLASS WINDOWS (80%)
- C DUAL ZONE DUCTED 15K BTU AIR CONDITIONING
- D DEXTER AXLES WITH AUTO ADJUST BRAKES
- E LAMINATED VACUUM BONDED ALUMINUM SIDEWALLS
- F 16" E-RATED RADIAL TIRES (STANDARD)
- G HICKORY SPRINGS RADIUS QUAD ENTRY STEPS
- H COLOR MATCHED SEAMLESS RUBBER ROOF (12 YR. WARRANTY)
- I 2" BLOCK FOAM INSULATION
- J DELUXE STAIN RESISTANT CARPET WITH PADDING
- K 3/8" ROOF DECKING (FULL WALK-ON ROOF)
- L 5/8" TONGUE AND GROOVE PLYWOOD FLOORING
- M ENCLOSED, HEATED UNDERBELLY
- N I-BEAM POWDER-COATED FRAME W/ RUST INHIBITOR
- O ALUMINUM LAMINATED & INSULATED BATH DECK
- P POWER FRONT JACKS WITH QUICK RELEASE SNAP PINS (HYDRAULIC OPTIONAL)
- Q SLEEK RADIUS ROOF
- R PAINTED COLOR MATCHED HIGH GLOSS GEL-COATED FIBERGLASS EXTERIOR
- S TWO TONE PAINTED GEL-COAT FIBERGLASS FRONT CAP (STANDARD)
- T IMPROVED FRONT CAP FOR SHARPER TURNING RADIUS
- U INSULATED SLAM LOCK BAGGAGE DOORS

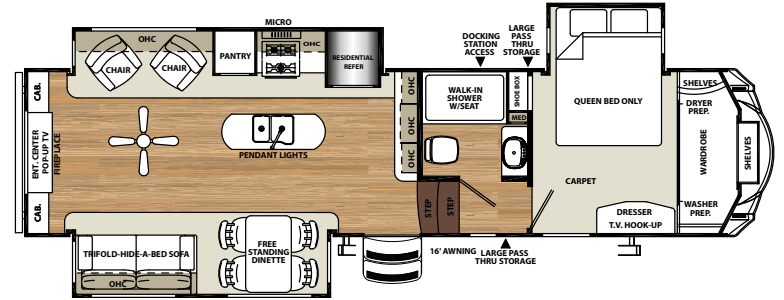
BUILT TO LAST

The Sandpiper is built to last using only the best materials to ensure that your coach is in it for the long haul. Careful engineering, well appointed craftsmanship and an uncompromising sense of pride go into every fifth wheel that we produce. Rest assured that your Sandpiper is built for luxury living.

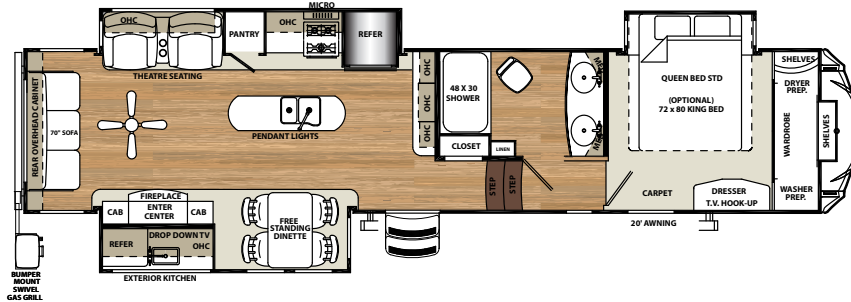
343RSOK



354RET

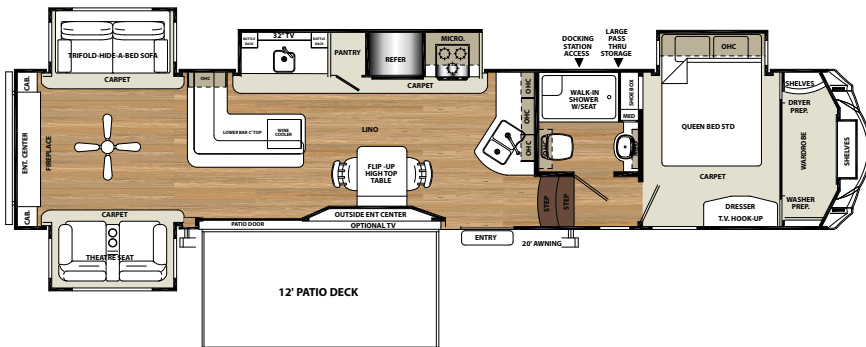


367DSOK

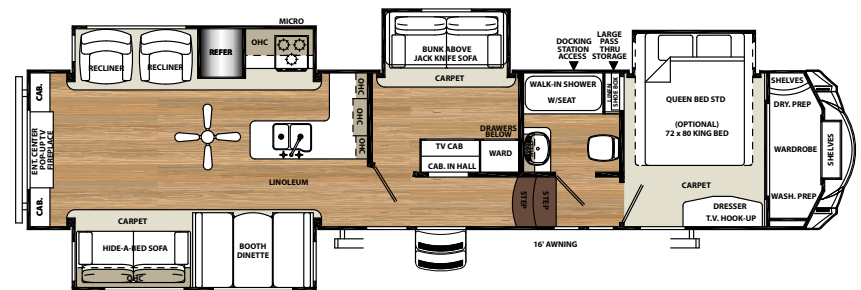


15

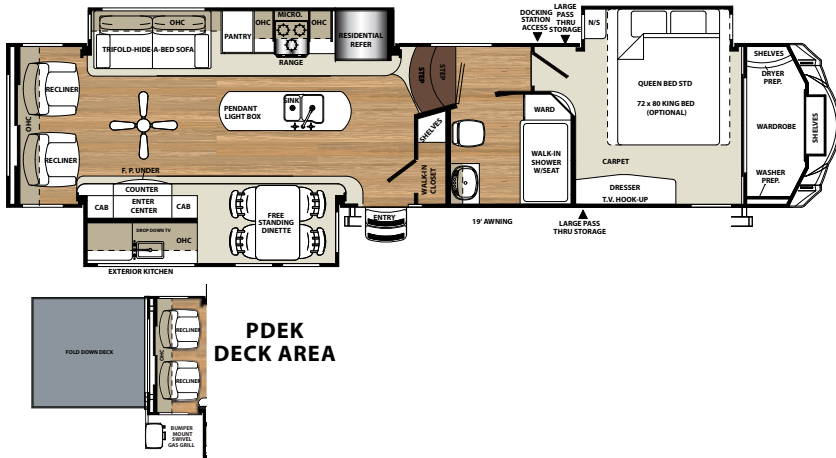
369KBAR



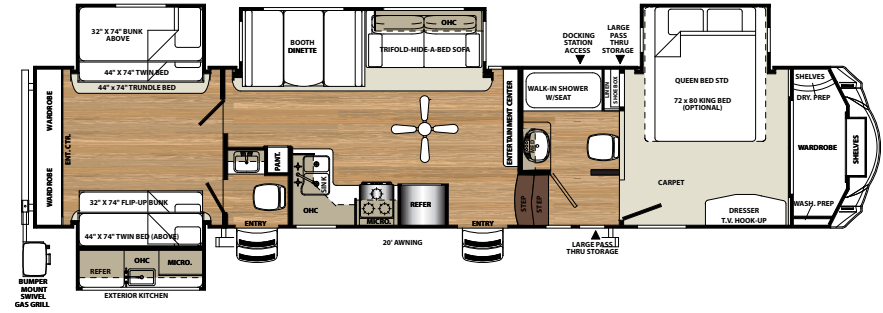
371REBH



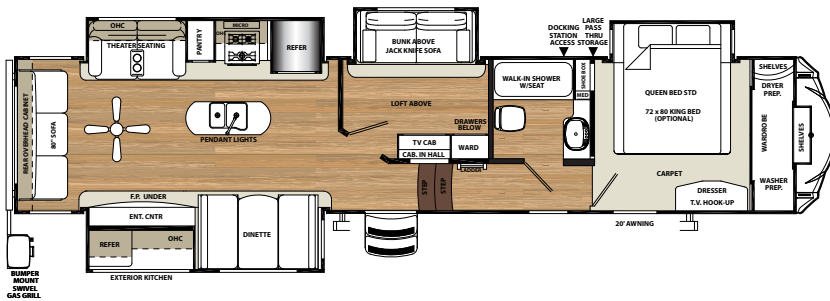
360PDEK



365SAQB



372LOK

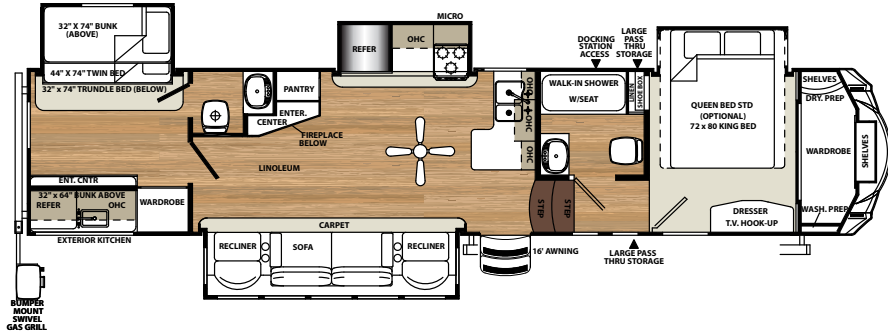


SPECIFICATIONS

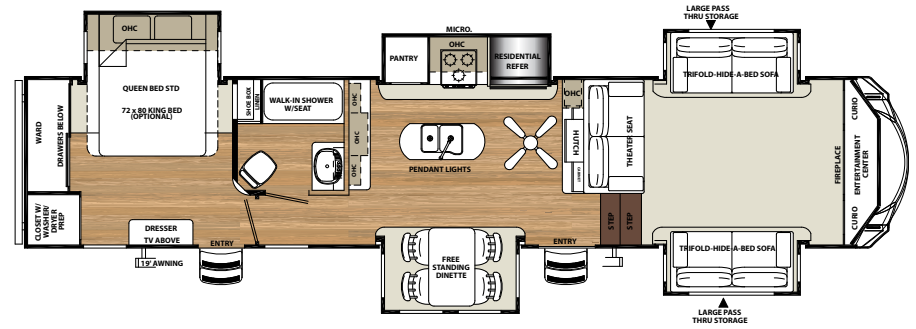
MODEL	343RSOK	354RET	360PDEK	365SAQB	367DSOK	369KBAR	371REBH	372LOK
HITCH	2,167	2,080	2,292	2,197	2,415	2,440	1,996	2,474
UVW	10,803	11,172	12,799	13,103	12,461	13,464	12,624	12,962
GVWR	15,500	15,500	15,500	15,500	15,500	15,500	15,500	15,500
CARGO	4,697	4,328	2,701	2,397	3,039	2,036	2,876	2,538
LENGTH	34'8"	36'0"	41'11"	41'7"	41'5"	42'5"	42'11"	42'9"
HEIGHT	13'2"	13'2"	13'2"	13'2"	13'2"	13'2"	13'2"	13'2"
AWNING	14'	16'	19'	20'	20'	20'	21'	20'
GRAY	97	104	97	134	134	134	104	134
BLACK	52	52	52	104	52	52	52	52
FRESH	60	60	60	60	60	60	60	60

PLEASE SEE BACK COVER FOR MORE INFORMATION REGARDING WEIGHTS.

376BHOK

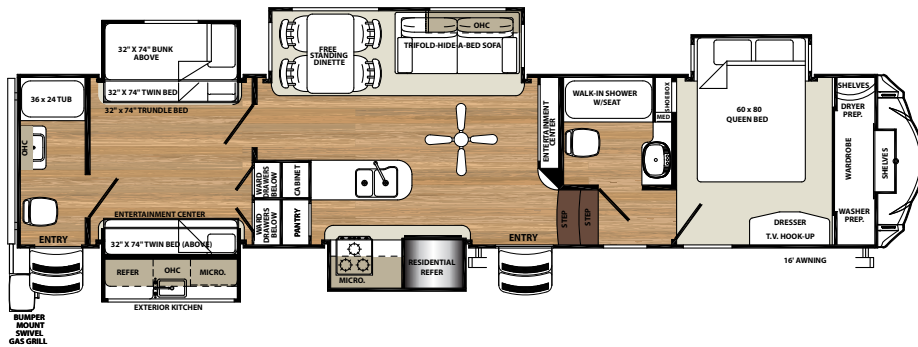


377FLIK

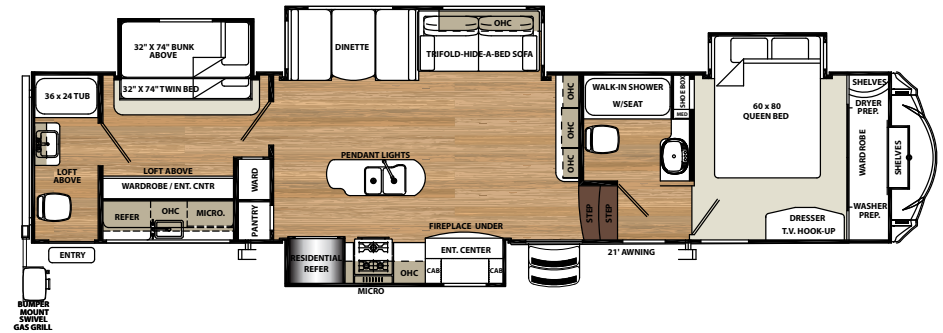


17

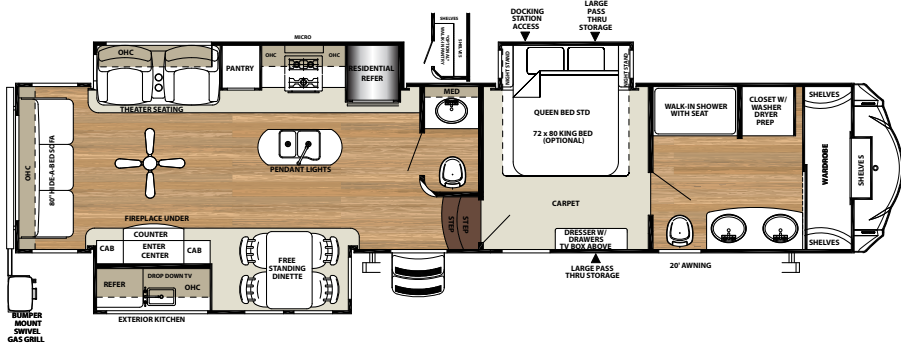
381RBOK



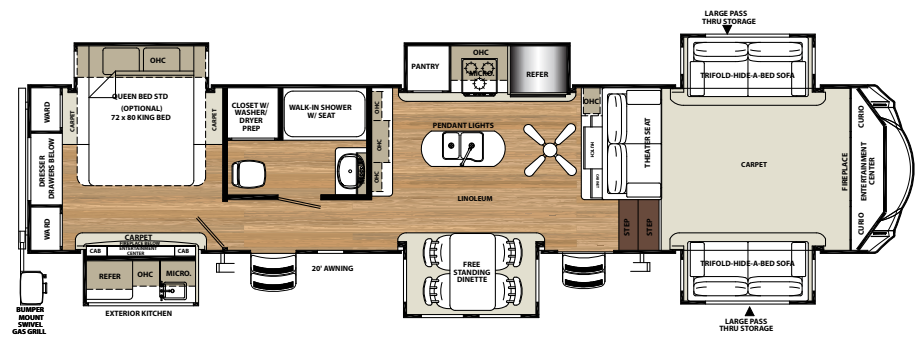
383RBLOK



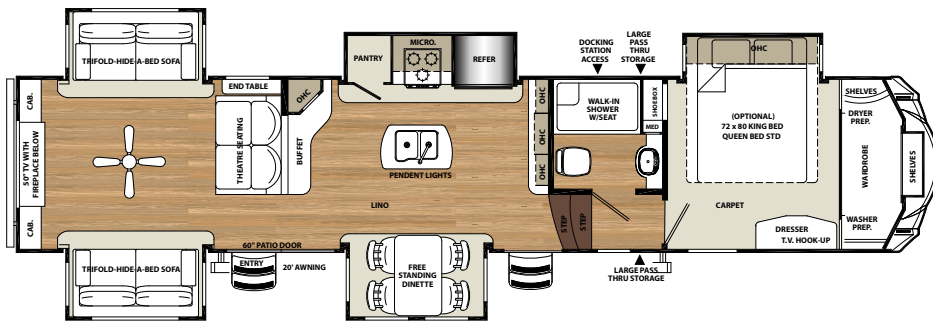
378FB



379FLOK



389RD



SPECIFICATIONS

MODEL	376BHOK	377FLIK	378FB	379FLOK	381RBOK	383RBLOK	389RD
HITCH	2,180	2,235	2,096	2,495	2,519	2,184	2,384
UVW	12,669	11,880	12,455	12,819	13,131	13,469	13,042
GVWR	15,500	15,500	15,500	15,500	15,500	15,500	15,500
CARGO	2,831	3,620	3,045	2,681	2,369	2,031	2,458
LENGTH	43'0"	41'8"	42'7"	42'9"	42'6"	42'2"	41'1"
HEIGHT	13'2"	13'2"	13'2"	13'2"	13'2"	13'2"	13'2"
AWNING	16'	21'	20'	20'	16'	16'	20'
GRAY	149	134	104	134	134	127	104
BLACK	104	52	104	52	82	82	52
FRESH	60	60	60	60	60	60	60

PLEASE SEE BACK COVER FOR MORE INFORMATION REGARDING WEIGHTS.

GVWR (Gross Vehicle Weight Rating) - is the maximum permissible weight of the unit when fully loaded. It includes all weights, inclusive of all fluids, cargo, optional equipment and accessories. For safety and product performance do NOT exceed the GVWR.

GAWR (Gross Axle Weight Rating) - is the maximum permissible weight, including cargo, fluids, optional equipment and accessories that can be safely supported by a combination of all axles.

UVW (Unloaded Vehicle Weight)* - is the typical weight of the unit as manufactured at the factory. It includes all weight at the unit's axle(s) and tongue or pin and LP Gas. The UVW does not include cargo, fresh potable water, additional optional equipment or dealer installed accessories.

*Estimated Average based on standard build optional equipment.

CCC (Cargo Carrying Capacity)** - is the amount of weight available for fresh potable water, cargo, additional optional equipment and accessories. CCC is equal to GVWR minus UVW. Available CCC should accommodate fresh potable water (8.3 lbs per gallon). Before filling the fresh water tank, empty the black and gray tanks to provide for more cargo capacity.

** Estimated average based on standard build optional equipment

Each Forest River RV is weighed at the manufacturing facility prior to shipping. A label identifying the unloaded vehicle weight of the actual unit and the cargo carrying capacity is applied to every Forest River RV prior to leaving our facilities.

The load capacity of your unit is designated by weight, not by volume, so you cannot necessarily use all available space when loading your unit.

All information contained in this brochure is believed to be accurate at the time of publication. However, during the model year, it may be necessary to make revisions and Forest River, Inc., reserves the right to make all such changes without notice, including prices, colors, materials, equipment and specifications as well as the addition of new models and the discontinuance of models shown in this brochure. Therefore, please consult with your Forest River dealer and confirm the existence of any materials, design or specifications that are material to your purchase decision.



Sandpiper



PRE-DELIVERY INSPECTION FACILITY

20,000 square feet of quality assurance. The bare essentials for a premium product. This state-of-the-art facility gives immediate daily feedback to production for quality assurance in every unit built.



Forest River, Inc. encourages our customers to purchase their Forest River products from a local dealership whenever possible for the following reasons:

It is the goal of Forest River, Inc. that all of our RV owners fully enjoy the RV experience and that customer satisfaction meets or exceeds their expectations!

- 1) Forest River, Inc. dealers are independently owned and operated businesses so priority service and scheduling is at their discretion and is often provided to customers that purchased their unit at that dealership.
- 2) Purchasing locally allows customers to establish meaningful relationships with a dealer, enhancing the RV experience through assistance with product questions, user tips or RV regulations for your state or country, and much more!
- 3) Canadian customers must meet requirements to bring an RV purchased out of the country to their home. These requirements may involve additional inspections and certifications, taxes and fees. Your local Canadian Dealer is a professional at meeting these requirements.
- 4) Scheduling timely warranty repairs and adjustments through a local dealership provides far greater flexibility and convenience to you, the customer!

24/7 EMERGENCY ROADSIDE ASSISTANCE

For a worry-free ownership experience Forest River includes one

Coach-Net®
RV Technical & Roadside Assistance

year of Coach-Net RV Technical & Roadside Assistance with each RV purchase. Whether new to the RV lifestyle or an experienced RV enthusiast, Forest River owners have 24/7 access to technical, operational and emergency road service coverage throughout the US & Canada. Coach-Net's fast, dependable service is just a phone call away.

FREE MEMBERSHIP
to Forest River Owners' Group

www.forestriverfrog.com



Learn More

Scan this barcode using a QR Reader on your smart phone to learn more about Forest River.



A Berkshire Hathaway company.

Forest River, Inc.
55470 C.R. 1, Elkhart, IN 46515
(574) 389-4600
www.forestriverinc.com/Sandpiper
www.forestriveraccessories.com

YOUR LOCAL SANDPIPER DEALER



Find us on Facebook
keyword "Sandpiper RV's"