

FUZION



THE ULTIMATE CROSSOVER
COMBINING RUGGED ADVENTURE & LUXURY LIVING



» FUZION FLEXIBILITY «

// LET'S YOU LEAVE IT ALL BEHIND //

fu-sion *noun attributive* \fyu-zhin\
The combination or mixture of things

Fu-zion *adj/v* \fyu-zhin\
The ultimate crossover combining rugged adventure and luxury living



» FUZION FLEXIBILITY «
// WITHOUT LEAVING IT ALL BEHIND //

DON'T LIMIT YOURSELF TO HIGHWAYS AND FREEWAYS. VENTURE OFF THE BEATEN PATH TO WHERE YOUR ULTIMATE PLAYGROUND AWAITS. WHETHER IT'S THE MOUNTAINS, THE DESERT, THE LAKE OR EVEN WINE COUNTRY... GO WHERE YOU WANT TO GO AND DO WHAT YOU WANT TO DO.



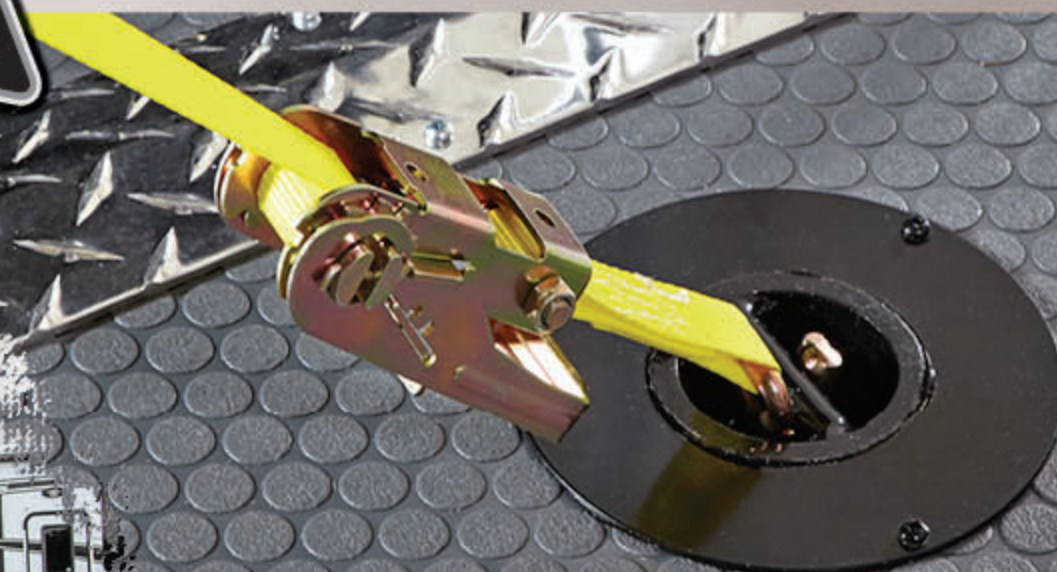


SHOWN IN FUZION
CHROME PACKAGE

5K INTER-LOCK SYSTEM

» 5K INTER-LOCK SYSTEM

Fuzion's 5K Inter-Lock system is the most rugged, toughest tie-down you can find in any toy hauler. Welded into the frame, each tie down can support 5000 pounds. Because your toys are important, be sure your new toy hauler is a Fuzion with the 5K Inter-Lock system.



Watch our exclusive video of the
5K Inter-Lock System being put the test!
KEYSTONERV.COM/FUZION





// FZ422 SHOWN IN ONYX DECOR



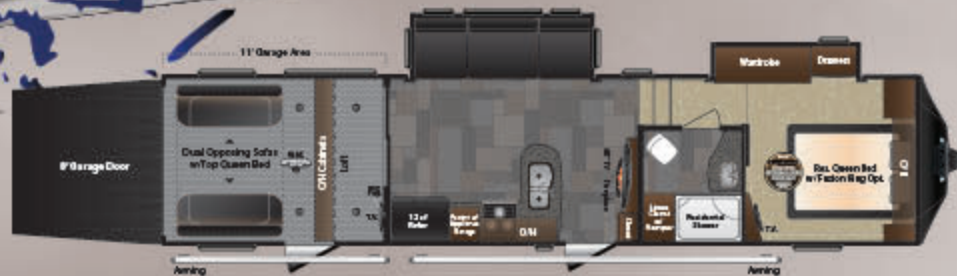
// FZ403 SHOWN IN ONYX DECOR



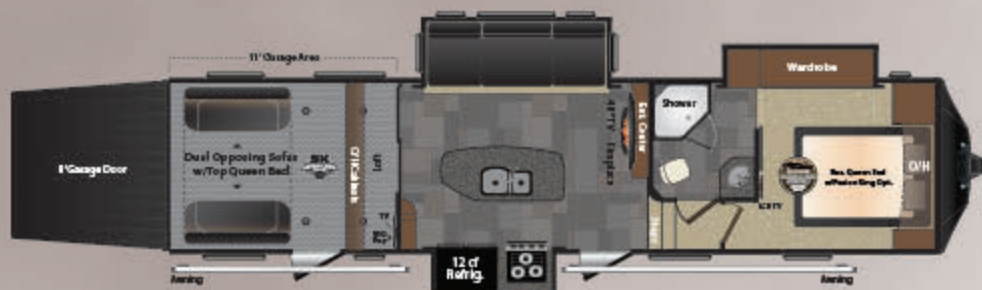
// FZ345 SHOWN IN CLAY DECOR



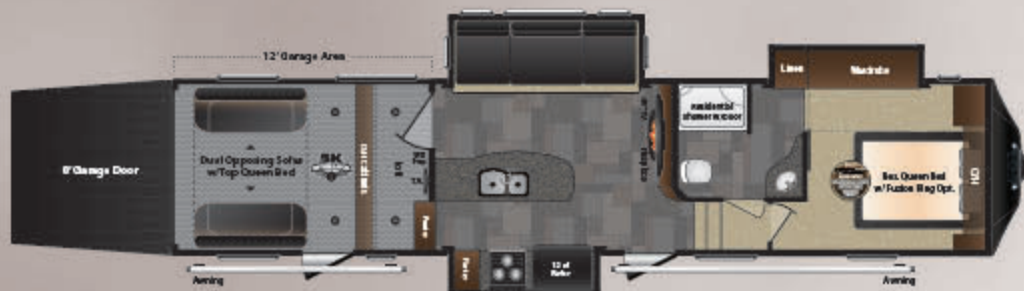
FUZION FLOORPLANS **TANDEM AXLE**



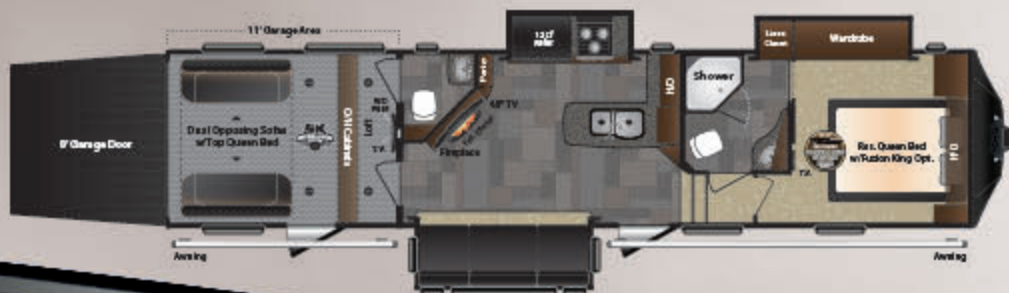
325



331



345



371

MODEL	325	331	345	371
SHIPPING WEIGHT	12806	12972	13398	13298
CARRYING CAPACITY	3694	3528	3102	3202
HITCH WEIGHT	3005	2915	3005	3015
EXTERIOR LENGTH*	38'	37' 7"	38' 11"	38' 11"
EXTERIOR HEIGHT	13' 1"	13' 1"	13' 1"	13' 1"
FRESH WATER	112	112	112	112
WASTE WATER	43	43	43	43
GRAY WATER	86	93	86	86
LPG LB.	60	60	60	60

DISCLAIMER: Product information is as accurate as possible as of the date of publication of this brochure. All features, floor plans, and specifications in this brochure are subject to change without notice. Please also consult Keystone's web site at www.keystonerv.com for more current product information and specifications. Tow Vehicle Disclaimer. CAUTION: Owners of Keystone recreational vehicles are solely responsible for the selection and proper use of tow vehicles. All customers should consult with a motor vehicle manufacturer or their dealer concerning the purchase and use of suitable tow vehicles for Keystone products. Keystone disclaims any liability or damages suffered as a result of the selection, operation, use or misuse of a tow vehicle. KEYSTONE'S LIMITED WARRANTY DOES NOT COVER DAMAGE TO THE RECREATIONAL VEHICLE OR THE TOW VEHICLE AS A RESULT OF THE SELECTION, OPERATION, USE OR MISUSE OF THE TOW VEHICLE. *Length is defined as the distance from the centerline of hitch pin/coupler to rear bumper of trailer. 11.14



SCAN ME

FOR MORE INFORMATION
ON FUZION FIFTH WHEEL
TOY HAULERS ALONG WITH
OTHER GREAT CONTENT



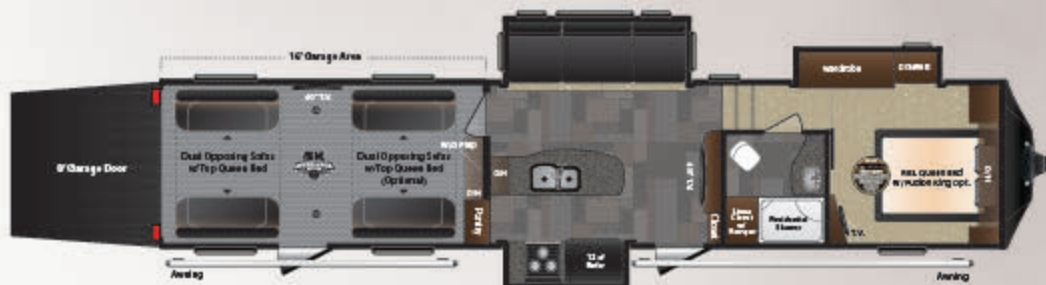
TRIPLE AXLE FUZION FLOORPLANS



403
ONLY AVAILABLE
IN CHROME



404
ONLY AVAILABLE
IN CHROME



416



422
ONLY AVAILABLE
IN CHROME

MODEL	403	404	416	422
SHIPPING WEIGHT	15274	14468	14610	15060
CARRYING CAPACITY	3726	4532	4390	3940
HITCH WEIGHT	3460	3280	3360	3625
EXTERIOR LENGTH*	43'	42'	42'	43'
EXTERIOR HEIGHT	13' 3"	13' 3"	13' 3"	13' 3"
FRESH WATER	112	112	112	112
WASTE WATER	86	43	43	86
GRAY WATER	93	75	86	136
LPG LB.	60	60	60	60

STAY IN TOUCH

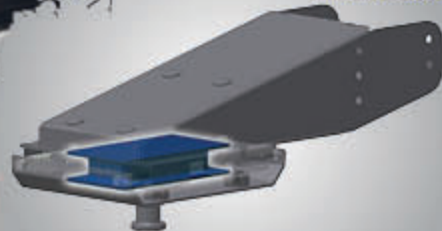
Visit us online to see all these great features. Fuzion is always just a touch away. You'll find 360 virtual tours, location of your nearest dealer, photos, videos and all of the latest information about Fuzion. Everything you need can be accessed anytime, day or night, from home or on the road. You can also find us on the Keystone RV facebook.



KEYSTONERV.COM/FUZION



MOR/RIDE CRE/3000 SUSPENSION



MOR/RIDE (RPB) PINBOX

*CHROME PACKAGE



REAR BACK UP CAMERA

*CHROME PACKAGE



PAINTED FRONT CAP WITH EXCLUSIVE KEY-SHIELD PAINT TECHNOLOGY

PAINT TECHNOLOGY
KEY-SHIELD



RESIDENTIAL EXTRA DEEP SINK W/HIGH RISE FAUCET



SAMSUNG & SONY COMPONENTS



MULTI FUNCTION REMOTE CONTROL SYSTEM



FUZION SLIDING PATIO DOOR WITH PRIVACY SHADE (CHROME STD., OPTIONAL ON FUZION)

GREAT FEATURES

Offering you great features inside and out Fuzion is designed to be thoroughly modern & sophisticated



DUAL LED LIGHTED AWNINGS



SECOND SECURITY CAMERA IN GARAGE AREA

*CHROME PACKAGE



COLLAPSIBLE EXTERIOR MOUNTED REAR LADDER



RESIDENTIAL SOLID WOOD PASSAGE DOORS



RESIDENTIAL REFRIGERATOR (PER MODEL)

*CHROME PACKAGE



DUAL AIR CONDITIONERS WITH CLIMATE CONTROL & HEATSTRIP IN GARAGE



METAL RAM AIR VENTS IN GARAGE (2)



ALL NEW VAPOR DOOR (PER MODEL)

FAST TRACK PATIO SYSTEM

Fuzion's exclusive Fast-Track Patio System makes it easy to set up your toy hauler patio in under 1 minute. Because the patio rails are not attached to the ramp, the door is lighter and easier to open and close. Plus, unloading your toys is now so simple.

The Fast Track Patio System is not attached to the ramp door. This makes the ramp door approximately 60 pounds lighter and much easier to open and close than the patios with the old fashioned systems.

The optional lightweight skid-resistant steps attach to the patio in just seconds. They are formed from aluminum and include a collapsible grab handle for extra security.



SCAN ME
TO WATCH THE VIDEO
AND SEE HOW EASY IT
IS TO SET UP THIS PATIO.



FUZION BLIZZARD PACKAGE

KEYSTONERV.COM/FUZION



Fuzion's Blizzard Package offers the best in the industry when it comes to high tech insulation. Don't be fooled by advertisements which claim "Tested to Zero Degrees". Ever ask them if it passed or failed? Fuzion's Blizzard Package is the real deal with R31 "Radiant Foil Technology". This insulation is used in the floor, wrapped around all of the holding tanks, used in the ceiling and wrapped around the front of the unit under the cap and in the gooseneck floor resulting in an R-factor of 24 under the bedroom. At Fuzion, we also use RFT R-24 in the slide rooms as well. To enhance the RFT's ability to maintain temperatures, we duct heat into the garage and the pass through compartment. This process exceeds most of the competition who claim the compartments are heated while it is only a heat duct passing through without a register delivering hot air! Fuzion also installs two attic vents helping to eliminate the possibility of condensation build up in the roof insulation.



SCAN ME

FOR MORE INFORMATION ON THE
FUZION MONSTER PACK PLUS

- 6 PT. HYDRAULIC LEVEL UP
 - MULTI-FUNCTION REMOTE
 - G-RATED TIRES W/ALUMINUM WHEELS
 - MOR/RVDE CRE SUSPENSION
 - HITCH COVER
 - TOY LOCK
 - DUAL 15K A/C'S W/HEAT STRIP IN GARAGE
 - CENTRAL VACUUM SYSTEM
 - UPGRADED GRAPHICS W/5 YEAR WARRANTY
 - DUAL 30 GALLON FUEL TANKS
 - FUZION WIDE GLIDE ROLLOVER SOFA SYSTEM IN GARAGE
*WIDER AND TALLER TO ACCOMMODATE
WIDER AND TALLER CARGO*
- UPGRADED ENTERTAINMENT PKG.*
- NEW SONY STEREO & 280 WATT SAMSUNG SOUND BAR W/BLUETOOTH
 - 48" SAMSUNG LED TV



**FUZION EXCLUSIVE KING BED
GLIDE-A-BED SYSTEM**

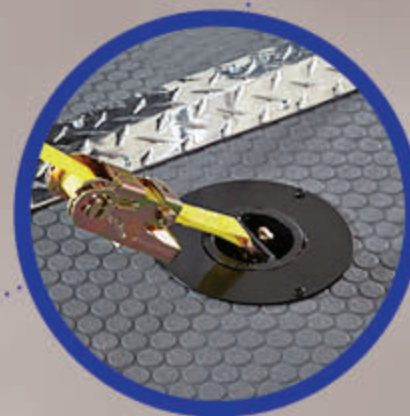


**FUZION FAST TRACK
PATIO SYSTEM**

THE FUZION 5



**FUZION WIDE GLIDE
ROLL-OVER SOFAS**



5K INTER-LOCK SYSTEM



G-RATED TIRES

- 1 Light weight, rear gate 3,000 lb. capacity w/ spring assist
- 2 Electric rear stabilizer jacks
- 3 Dove tail storage bin
- 4 Tuff ply flooring in garage
- 5 16" E-rated radial tires
- 6 Aluminum wheels
- 7 7,000 lb. axles
- 8 15,000 BTU A/C
- 9 3/8" OSB roof decking
- 10 Rolled fiberglass insulation
- 11 5" wood trusses 16" on center
- 12 Aluminum wrapped A/C duct
- 13 Aluminum radius roof transition molding
- 14 Vented attic
- 15 Dual Electric awnings
- 16 Expanded Polystyrene (EPS) Block Foam Insulation
- 17 2" double welded aluminum wall studs
- 18 5/8" one piece decking in living area
- 19 3" welded aluminum floor
- 20 Fluted polypropylene enclosed underbelly
- 21 Double layer luan w/ staggered seams
- 22 High-gloss exterior
- 23 Optional 6-Point Level Up by Lippert
- 24 Front cap designed for better turning radius
- 25 Hitch vision
- 26 102" Wide-body
- 27 10" or 12" Steel Twin I-Beam FRAME
- 28 FULL Walk-On Roof
- 29 Aluminum Framed, Fully Laminated Fiberglass Sidewalls
- 30 Radiant-Foil Insulation
- 31 Aluminum Frame floor joist
- 32 Slam latch Baggage Doors
- 33 5K Inter-Lock System

Welded into the frame, each tie down can support 5000 pounds. Because your toys are important, be sure your new toy hauler is a Fuzion with the 5K Inter-Lock system.

FUZION CONSTRUCTION

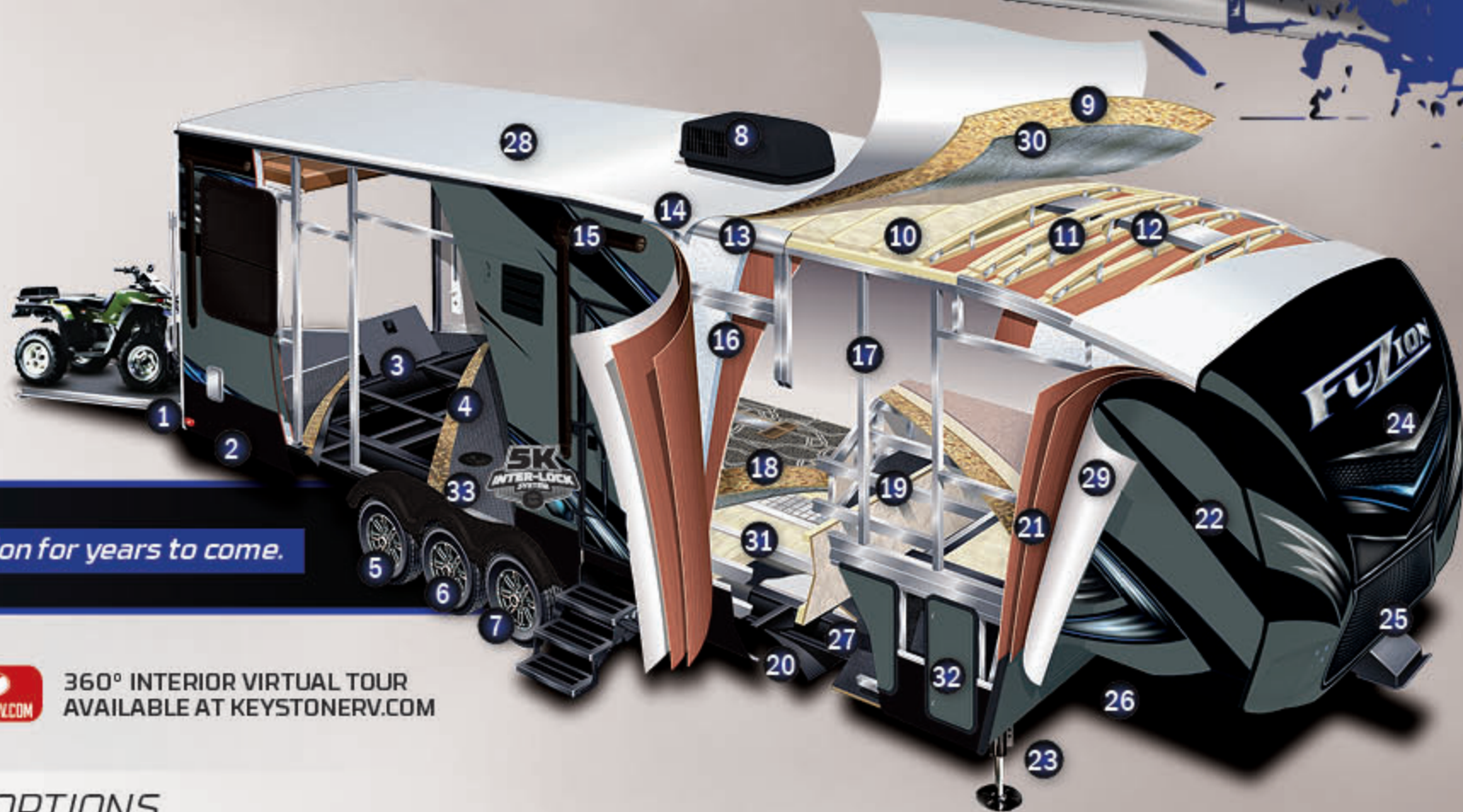
Superior construction to provide long lasting durability means you w



6 POINT HYDRAULIC AUTO LEVELING SYSTEM

This system has the strength to lift 60,000 lb. off the ground-need to change a tire? No problem! Most importantly though, is the ease of use. One touch and the coach levels itself.

It also remembers the point at which you unhook from the truck so when it comes time to hitch back up-press a button and you are back at that height! Other brands use an electric system which is slower, weaker, and you have to pull the pins on all 6 legs to get them to drop!



will enjoy your Fuzion for years to come.



360° INTERIOR VIRTUAL TOUR
AVAILABLE AT KEYSTONERV.COM

DECOR OPTIONS



CLAY DECOR



ONYX DECOR



SANTA FE DECOR

FUZION CHROME PACKAGE

CHROME

Luxury

TRUE CROSSOVER

INCLUDES- MONSTER PACK PLUS FEATURES AND...

- STAINLESS APPLIANCES W/CONVECTION MICROWAVE
- HARDWOOD CEILING TREATMENTS
- LAMP-BEDROOM NIGHTSTAND (N/A 403)
- LED TV IN PASS THRU STORAGE
- DIGITAL WIRELESS BACKUP CAMERA
- SECOND CAMERA IN GARAGE
- 310 WATT "CHROME" SOUNDBAR W/BLUETOOTH
- MOR/RIDE (RPB) PIN BOX
- FUZION FAST TRACK PATIO SYSTEM
- SLIDING REAR PATIO DOOR
- REAR RAMP PATIO STEP
- LED LIGHTED PATIO AWNING
- EXTERIOR LOUNGE CHAIRS
- CHROME KING BED MASTER SUITE
- CHROME BEDDING AND HEADBOARD
- CHROME PAINT PACKAGE
- SAMSUNG 18 CU. FT. RESIDENTIAL REFRIGERATOR (403, 404 & 422)

OPTIONAL ON 345 | 403, 404, 422 (STANDARD)



345



403



404



422

INTERIOR

- » Premium Bluetooth Compatible Stereo with CD/DVD Player, Flat Panel LED HDTV, Sound Bar with wireless sub, 2 All Weather Exterior Speakers, Sub-woofer in Enclosed Speaker Box, A & B Indoor/Outdoor Speaker Switch, Blue-Ray DVD Player
- » Fuzion Central Command Center
- » Dual Ducted 15,000 BTU A/C with Cold Air Dump
- » 2nd A/C with Heat Strip in Garage (Included in Monster Package)
- » Insulated A/C Ductwork
- » 30" Residential Microwave
- » 3 Burner Range Top and 22" Oven
- » 12 or 18 Cu. Ft. Refrigerator (per model)
- » Professional Bottle Opener
- » Solid Surface Kitchen Sink Covers
- » Solid Cherry Cabinet Doors
- » Lumber-Core Cabinetry
- » Screwed Cabinetry - No Staples
- » Residential Cabinet Hardware
- » Solid Wood Drawer Frames
- » Solid Wood Residential Passage Doors
- » Wood Blinds
- » 80lb. Rated Full-Extension Ball Bearing Drawer Guides
- » Recessed LED Puc Lighting Throughout
- » Residential Furniture
- » Night Shades
- » Multiple Sky Windows (most models)
- » 30" Wide Radius Entry Door with Screen
- » Multiple Cable TV Connections
- » Satellite Prep (Bedroom, Living Room, Garage)
- » Digital Splitters Throughout for HDTV
- » TV Antenna with Power Booster
- » Exterior Stereo Antenna
- » 60" x 80" Residential Size Queen Bed
- » Deluxe Memory Foam Mattress
- » Underbed Storage
- » Residential Shower Surround
- » Fireplace w/Surround (N/A 416)
- » Residential, Adjustable, Hand-Held

- » Massaging Shower Fixture
- » Skylight Over Shower
- » Porcelain Toilet with Foot Flush
- » Power Exhaust Fan in Commode Room
- » Mirrored Medicine Cabinet
- » Steel Loft Bunk Ladder
- » 40" x 80" Residential Size Loft Mattress
- » LP Detector
- » Carbon Monoxide Detector
- » Fire Extinguisher
- » GFI Duplex Receptacles

EXTERIOR

- » 5500 Watt Generator
- » 6pt. Level-Up System (Included in Monster Package)
- » Aerodynamic Fiberglass Front Cap with Lights and Improved Turning Radius
- » Attic Vents
- » Step Light
- » LED Security Lights
- » LED Cargo Ramp Loading Lights
- » Compartment Lights
- » LED Tail/Brake Lights
- » Frameless Tinted Safety Glass Windows
- » Crank Down Spare Tire and Carrier
- » Collapsible Roof Ladder
- » Dual Folding Entry Assist Handles with Padding
- » Dual Power Awning w/LED Lighting
- » LP Quick Connect

GARAGE

- » Double Electric Beds with Dual Opposing Sofas
- » Safety Glass 5' Patio Door with Screen and Privacy Curtain with Tie-Back (select models)
- » Washer/Dryer Prep
- » Diamond Plate Protection on Sidewalls
- » Metal RAM Air Vents (2)
- » 8' Spring Assisted Ramp Door
- » Gas/Oil Resistant Tuff-Ply Flooring
- » 5K Inter-Lock System (5,000lb. Frame Welded Tie-Downs)

- » Dual Ducted A/C, Ducted Heat
- » Fuel Station with 12V Pump, 30 Gallon Fuel Tank, and Static Line
- » Cable TV Jack
- » Night Shades

EQUIPMENT

- » 7,000 lb. EZ Lube Axles
- » Flipped Axles
- » Electric 2" x 12" Brakes on Every Wheel
- » 16" Aluminum Wheels
- » 16" Load Range "G" Radial Tires
- » Low-Rise Triple Entrance Step
- » Electric One Touch Awning w/LED Light Strip
- » 12 Gallon Gas / Electric Water Heater with Direct Spark Ignition
- » 50 AMP Service with Detachable Marine Power Cord
- » 100 AMP Converter
- » 12 Volt Disconnect
- » Water Heater By-Pass
- » Black Tank Flush
- » Enclosed Termination Valves
- » Outside Shower with Hot and Cold Water
- » Generator Prep with Start / Stop Switch, Hour Meter and Fuel Gauge
- » 35,000 BTU Furnace
- » Heated, Insulated, Enclosed Holding Tanks
- » Electric Slide-Out System with Manual Override

*OPTIONS

- » Fast Track Patio System with Awning
- » Rear Ramp Patio Step
- » Heat Pads for Tanks
- » Sliding Rear Patio Door
- » Dual Pane Frameless Windows
- » King Bed Suite Glide-A-Bed System

Features Centrally Located in Convenience Center

// THE ULTIMATE CROSSOVER COMBINING RUGGED ADVENTURE & LUXURY LIVING //

BUY LOCALLY PURCHASING YOUR RV LOCALLY

It's up to you where you purchase your new Fuzion, but may we suggest your local dealer? Not only does it help your local economy and provide jobs, but it will also give you an opportunity to develop a service relationship with someone that will come to know you and your coach. Congratulations on finding the best built, best equipped and best value in the industry. Happy travels!

YOUR LOCAL DEALER IS:

DECEMBER 2014



**Keystone RV
Company**

WWW.KEYSTONERV.COM
574.535.2100 • 2642 HACKBERRY DRIVE
P.O. BOX 2000 • GOSHEN, IN 46527



Go RVing.

DISCLAIMER: Product information is as accurate as possible as of the date of publication of this brochure. All features, floor plans, and specifications in this brochure are subject to change without notice. Please also consult Keystone's web site at www.keystonerv.com for more current product information and specifications. Tow Vehicle Disclaimer: CAUTION: Owners of Keystone recreational vehicles are solely responsible for the selection and proper use of tow vehicles. All customers should consult with a motor vehicle manufacturer or their dealer concerning the purchase and use of suitable tow vehicles for Keystone products. Keystone disclaims any liability or damages suffered as a result of the selection, operation, use or misuse of a tow vehicle. KEYSTONE'S LIMITED WARRANTY DOES NOT COVER DAMAGE TO THE RECREATIONAL VEHICLE OR THE TOW VEHICLE AS A RESULT OF THE SELECTION, OPERATION, USE OR MISUSE OF THE TOW VEHICLE. 11/14

WWW.KEYSTONERV.COM/FUZION

FUZION



**Keystone RV
Company**