

# SIGNATURE

TRAVEL TRAILERS | FIFTH WHEELS  
BY **ROCKWOOD**

PROUDLY  
*Millersburg Made*  
SINCE 1974



**FOREST RIVER**

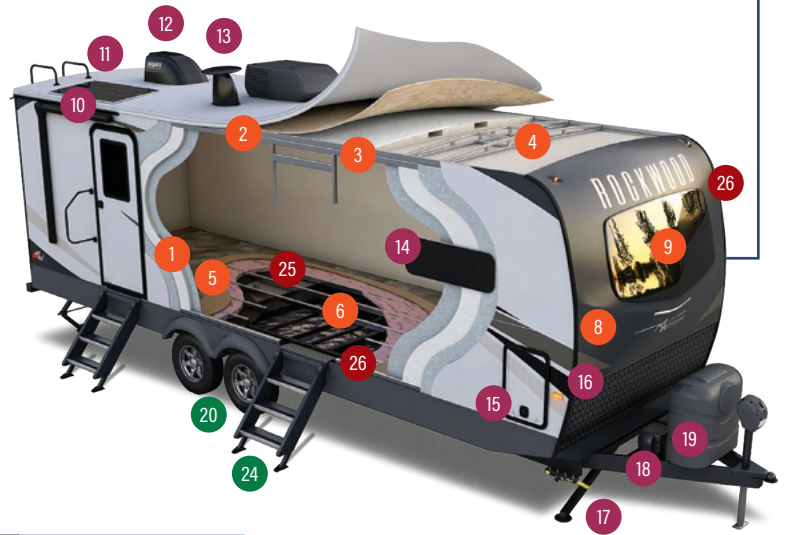
[FORESTRIVERINC.COM](http://FORESTRIVERINC.COM)



# Signature Travel Trailers

**EXPERIENCE MODERN RESIDENTIAL LUXURY WITH SPACIOUS INTERIORS IN A TRAVEL TRAILER!**

Rockwood's 2025 Signature Travel Trailers need no introduction, but let's walk through some of the amazing features it has to offer. Modern standard amenities include a 200W roof mount solar with 30A charge controller, 1800W inverter with inverted outlets, aluminum framed dinettes and bed bases, hybrid woven flooring in flush floor slides, Showermiser water saving system, day/night roller shades, and more!



## SUPERIOR CONSTRUCTION

1. Complete **Composite** Wall Construction
2. Fully **Laminated** Walkable Roof
3. Six-Sided Full-Aluminum Frame
4. Aluminum Truss Roof Bracing
5. 5/8" Tongue & Groove Plywood Floor
6. Aluminum Floor Joists
7. Aluminum Dinette, Bed, and Bunk
8. Painted Fiberglass Front Cap with Clear Coat
9. Automotive Glass Windshield

## STANDARD FEATURES

10. 200W Solar Panel w/1800W Inverter & 30A Charge Controller
11. Back-Up Camera Prep
12. Maxxair® Fan with Cover
13. Winegard Air 360+ Prepped for Wi-Fi
14. Frameless Windows
15. Key-Alike Lock System with Slam Baggage Doors
16. Additional Solar Prep
17. PSX2 Power Stabilizers
18. Double Battery Boxes
19. Double 30 Lb. LP Tanks

## SAFETY STANDARDS

20. Dexter® Torflex® Axles
21. TST Tire Pressure Monitor System
22. Goodyear Endurance Tires
23. Nitrogen-Filled Tires with Balancing Beads
24. MORryde® Strut Assist Steps

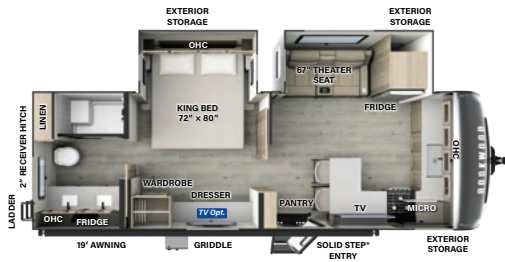
## CLIMATE PROTECTION PACKAGE

25. 12V Thermostat-Controlled Heated Tanks
26. Radiant Foil in Underbelly, Front Caps & Slides

## OPTIONAL FEATURES

27. Additional 200W Solar Panel
28. Slide Toppers
29. Auto-Leveling
30. 2nd or 3rd A/C Where Applicable

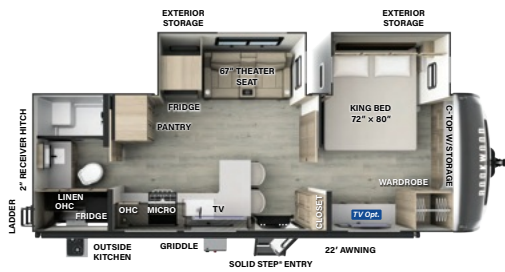




### 8263MBR

LENGTH: 29' 11" WIDTH: 8' HEIGHT: 11' 7" HITCH: 1065 AXLE: 6685

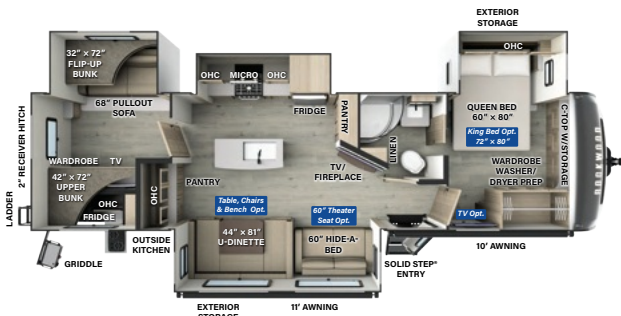
UVW: 7809 CCC: 2056 **F** 54 GAL **G** 78 GAL **B** 39 GAL



### 8265KBS

LENGTH: 29' 11" WIDTH: 8' HEIGHT: 11' 7" HITCH: 1010 AXLE: 6580

UVW: 7649 CCC: 2161 **F** 54 GAL **G** 78 GAL **B** 39 GAL



### 8336BH

LENGTH: 36' 8" WIDTH: 8' HEIGHT: 11' 7" HITCH: 1320 AXLE: 8290

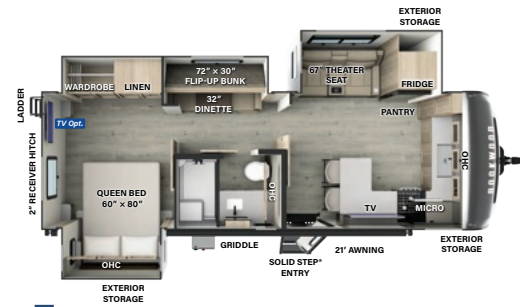
UVW: 9669 CCC: 1651 **F** 54 GAL **G** 131 GAL **B** 53 GAL



### 8338DB

LENGTH: 36' 10" WIDTH: 8' HEIGHT: 11' 7" HITCH: 1408 AXLE: 8313

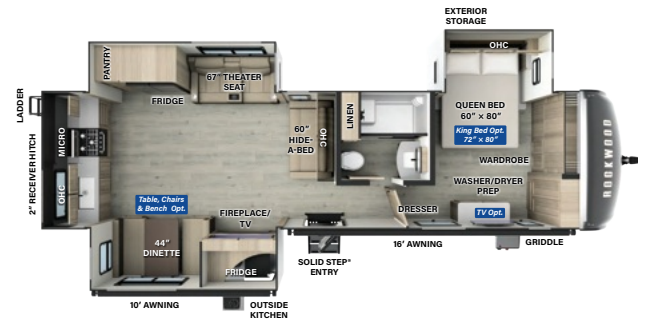
UVW: 9780 CCC: 1628 **F** 54 GAL **G** 122 GAL **B** 53 GAL



### 8264BHS

LENGTH: 29' 11" WIDTH: 8' HEIGHT: 11' 7" HITCH: 1000 AXLE: 7220

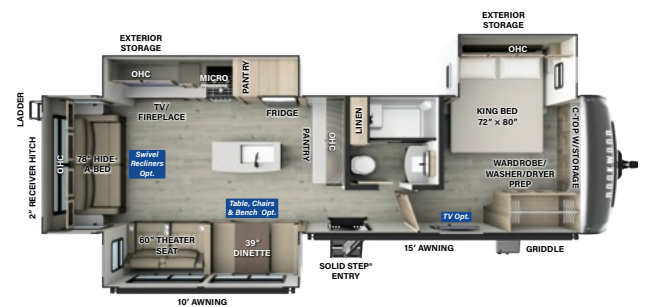
UVW: 8279 CCC: 1521 **F** 54 GAL **G** 92 GAL **B** 53 GAL



### 8332SB

LENGTH: 36' 8" WIDTH: 8' HEIGHT: 11' 7" HITCH: 1266 AXLE: 8259

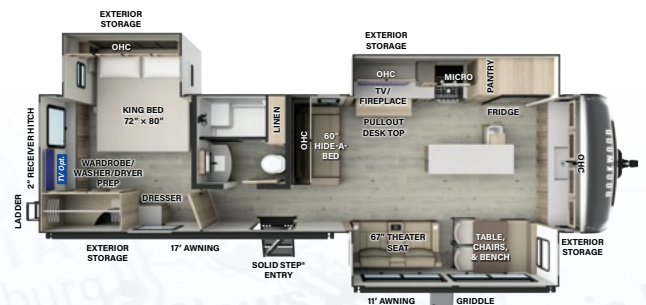
UVW: 9584 CCC: 1682 **F** 54 GAL **G** 113 GAL **B** 53 GAL



### 8337RL

LENGTH: 36' 8" WIDTH: 8' HEIGHT: 11' 7" HITCH: 1375 AXLE: 8020

UVW: 9454 CCC: 1921 **F** 54 GAL **G** 122 GAL **B** 53 GAL



### NEW! 8339FK

LENGTH: 36' 10" WIDTH: 8' HEIGHT: 11' 7" HITCH: 1295 AXLE: 8120

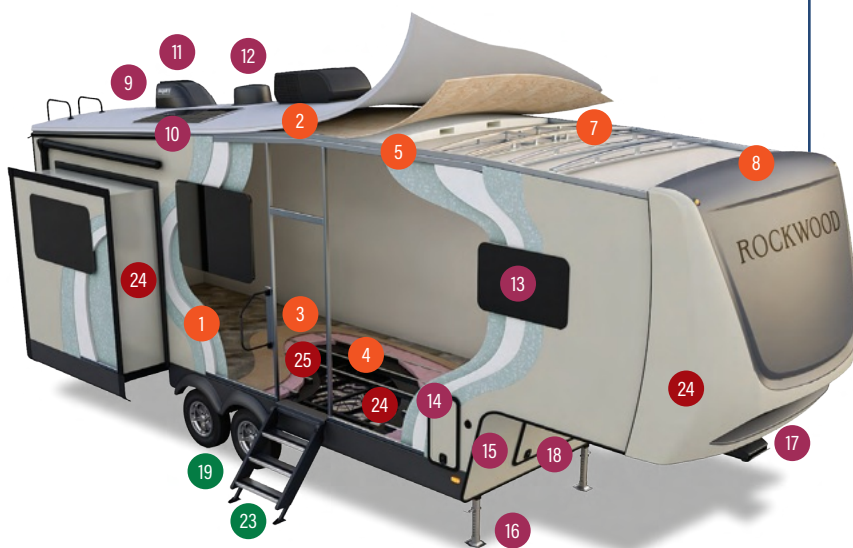
UVW: 9474 CCC: 1821 **F** 54 GAL **G** 131 GAL **B** 53 GAL



# Signature Fifth Wheels

EXPERIENCE LUXURIOUS NEXT-LEVEL CAMPING WITH ROCKWOOD SIGNATURE FIFTH WHEELS.

Rockwood's quality and superior construction reputation precedes itself in 2025 with Signature Fifth Wheels. The finest creature comforts were implemented during development of the Signature series. Amenities include electric auto leveling, residential brick fireplace surround, upgraded solid-surface countertops, and even residential style soft-close drawers.



## SUPERIOR CONSTRUCTION

1. Complete **Composite** Wall Construction
2. Fully **Laminated** Walkable Roof
3. 5/8" Tongue & Groove Plywood Floor
4. Aluminum Floor Joists
5. Six-Sided Full-Aluminum Frame
6. Aluminum Dinette, Bed, and Bunk
7. Aluminum Truss Roof Bracing
8. Painted Fiberglass Front Cap with Clear Coat

## STANDARD FEATURES

9. Back-Up Camera Prep
10. 200W Solar Panel with 30 AMP Charge Controller
11. Maxxair Fan with Cover
12. Winegard Air 360+ Prepped for Wi-Fi
13. Frameless Windows
14. Double 30 Lb. LP Tanks
15. Additional Solar Prep
16. Auto-Leveling
17. Units Over 32': Curt® Rota-Flex Pin Box<sup>1</sup>
18. Key-Alike Lock System with Slam Baggage Doors

## SAFETY STANDARDS

19. TST Tire Pressure Monitor System
20. ABS Brakes
21. 16" E-Rated Goodyear Endurance Tires
22. Nitrogen-Filled Tires with Balancing Beads
23. MORryde Strut Assist Steps

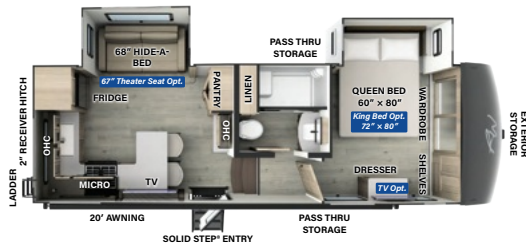
## CLIMATE PROTECTION PACKAGE

24. Radiant Foil in Underbelly, Front Caps & Slides
25. 12V Thermostat-Controlled Heated Tanks

## OPTIONAL FEATURES (NOT PICTURED)

26. Power Package
27. Additional 200W Solar Panel
28. Slide Toppers
29. 2nd or 3rd A/C Where Applicable

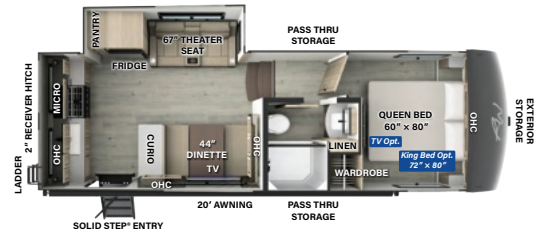
<sup>1</sup> Units under 32' have a Curt® Turning Point Pin Box



**R281RK**

LENGTH: 28' 11" WIDTH: 8' HEIGHT: 13' 2" HITCH: 1236 AXLE: 6952

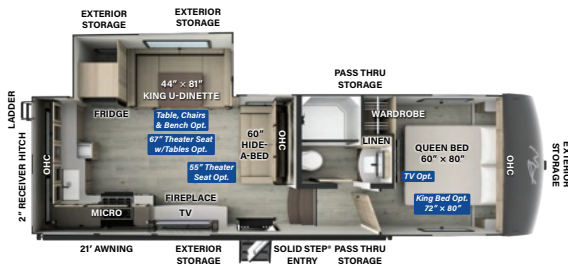
UVW: 8247 CCC: 1589 **F** 54 GAL **G** 78 GAL **B** 39 GAL



**NEW!**  
**R282RK**

LENGTH: 28' 11" WIDTH: 8' HEIGHT: 13' 2" HITCH: 1356 AXLE: 6480

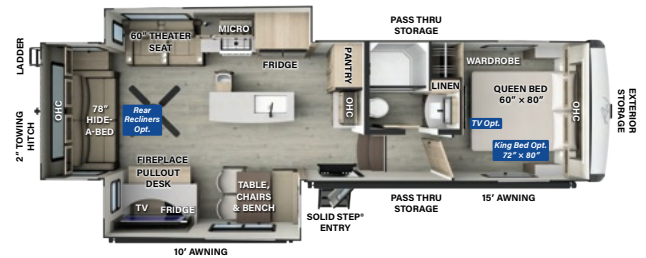
UVW: 7895 CCC: 1988 **F** 54 GAL **G** 78 GAL **B** 39 GAL



**NEW!**  
**R301RKS**

LENGTH: 31' 4" WIDTH: 8' HEIGHT: 13' 2" HITCH: 1385 AXLE: 6715

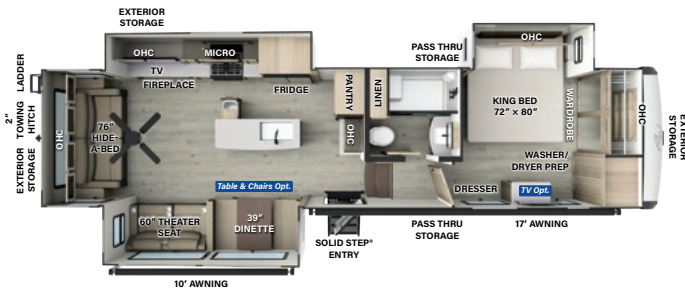
UVW: 8159 CCC: 1839 **F** 54 GAL **G** 78 GAL **B** 39 GAL



**NEW!**  
**R331RL**

LENGTH: 34' WIDTH: 8' HEIGHT: 13' 4" HITCH: 1717 AXLE: 8108

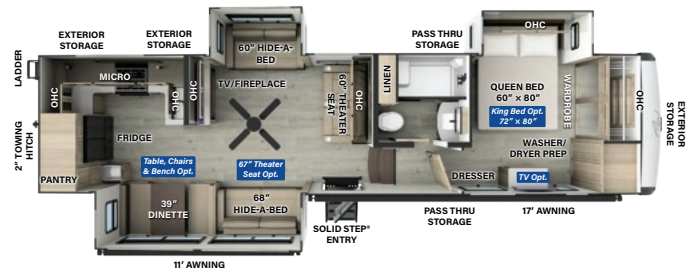
UVW: 9884 CCC: 2233 **F** 54 GAL **G** 92 GAL **B** 53 GAL



**NEW!**  
**R361RLS**

LENGTH: 36' 10" WIDTH: 8' HEIGHT: 13' 4" HITCH: 1905 AXLE: 8315

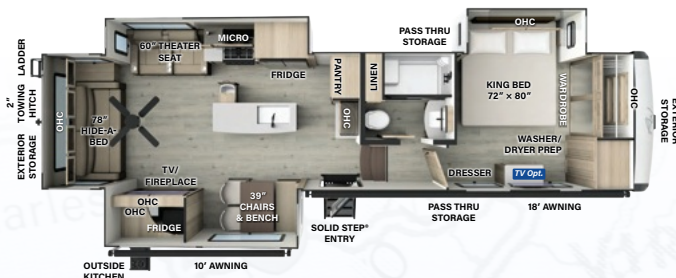
UVW: 10279 CCC: 2026 **F** 54 GAL **G** 92 GAL **B** 53 GAL



**R371RK**

LENGTH: 36' 10" WIDTH: 8' HEIGHT: 13' 4" HITCH: 2001 AXLE: 8290

UVW: 10350 CCC: 2051 **F** 54 GAL **G** 92 GAL **B** 53 GAL



**R372RL**

LENGTH: 36' 10" WIDTH: 8' HEIGHT: 13' 4" HITCH: 1905 AXLE: 8880

UVW: 10844 CCC: 1461 **F** 54 GAL **G** 83 GAL **B** 53 GAL

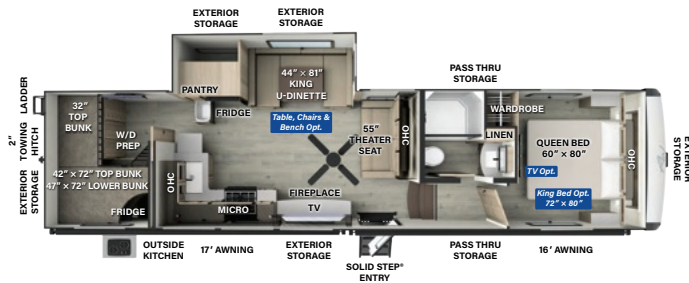
For half a century, we have proudly and passionately crafted recreational vehicles that have become synonymous with quality, innovation, and adventure.

Since our establishment in 1974, we've committed ourselves to putting quality first and doing things right, every step of the way.

**50**  
CELEBRATING  
**YEARS**

**ROCKWOOD**  
SINCE 1974

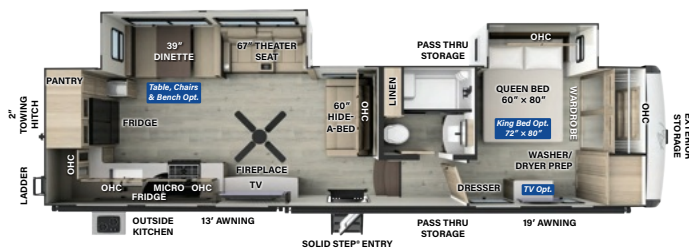




### NEW! R374DBH

LENGTH: 36' 10" WIDTH: 8' HEIGHT: 13' 4" HITCH: 1745 AXLE: 7857

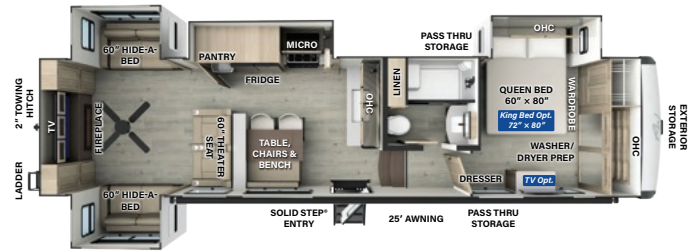
UVW: 9661 CCC: 2084 **F** 54 GAL **G** 92 GAL **B** 53 GAL



### R376RK

LENGTH: 36' 10" WIDTH: 8' HEIGHT: 13' 4" HITCH: 1993 AXLE: 7920

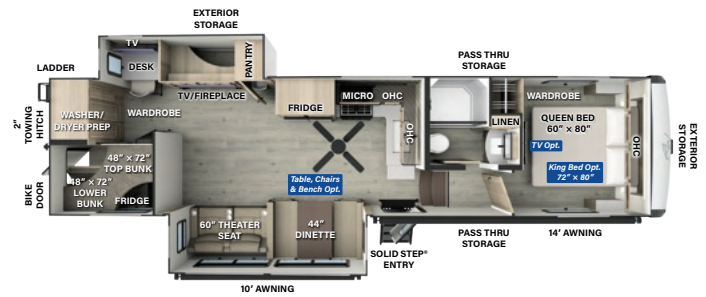
UVW: 9972 CCC: 2421 **F** 54 GAL **G** 92 GAL **B** 53 GAL



### R375RL

LENGTH: 36' 10" WIDTH: 8' HEIGHT: 13' 4" HITCH: 1740 AXLE: 8580

UVW: 10379 CCC: 1761 **F** 54 GAL **G** 92 GAL **B** 53 GAL



### NEW! R378BH

LENGTH: 36' 10" WIDTH: 8' HEIGHT: 13' 4" HITCH: 1687 AXLE: 8506

UVW: 10252 CCC: 1835 **F** 54 GAL **G** 131 GAL **B** 53 GAL

## EXPERIENCE LIMITLESS RVING POWER!

Whether boondocking or going off-grid, the Signature Fifth Wheel Power Package option was designed for outdoor enthusiasts who love adventure.

POWER  
PACKAGE



### Option Includes:

- Charge at Home from a 15A Receptacle with Combimaster Power Sharing Feature
- 460Ah Lithium-Ion Battery; Optional Additional 460Ah Battery
- 3.5kW Inverter-Charger
- 200A Charge Capacity
- 50A DC/DC Charger —New!
- (6) 200W GoPower® Solar Panels
- Integrated 60A MPPT Charge Controller
- 5" Touchscreen Monitor
- Centralized System Disconnect Switch
- 15,000 BTU A/C w/Soft Start Technology

OPTIONAL POWER PACKAGE AVAILABLE ON ALL SIGNATURE FIFTH WHEELS



## Slide Options

Model	60" Theater Seat	67" Theater Seat	Table, Chairs & Bench	King Bed
Signature Travel Trailers				
8263MBR		Standard		Standard
8264BHS		Standard		
8265KBS		Standard		✓
8332SB	Standard		✓	Standard
8336BH	✓		✓	✓
8337RL	Standard		✓	Standard
8338DB	✓		✓	✓
8339FK		Standard	Standard	Standard
Signature Fifth Wheels				
R281RK		✓		✓
R282RK		Standard		✓
R301RKS		✓	✓	✓
R331RL	Standard		Standard	✓
R361RLS	Standard		✓	Standard
R371RK		✓	✓	✓
R372RL	Standard		Standard	Standard
R374DBH			✓	✓
R375RL			Standard	✓
R376RK		Standard	✓	✓
R378BH	Standard		✓	✓



### MOBILE DEVICE CONTROL!

Your RV is equipped with Lippert™ One Control®. This WiFi app-based interface provides comfort and convenience to control and monitor your RV's functions.

With the WeRV app you can control your lights, slides and awning from your fingertips.

For a complete list of control capabilities, please visit [lippert.com/onecontrol](http://lippert.com/onecontrol)

**Whenever, wherever we make your experience better.**



## Download the WeRV App!



Apple and App Store are registered trademarks of Apple Inc. Google Play and the Google Play logo are trademarks of Google LLC.



# ROCKWOOD

201 WEST ELM MILLERSBURG, IN 46543  
WWW.FORESTRIVERINC.COM/ROCKWOOD  
574.642.2640



RV WITH US



@RockwoodRVs

# 50

CELEBRATING  
YEARS

ROCKWOOD  
SINCE 1974

## Rockwood Warranty. Our Promise.

FOR DETAILS ON ROCKWOOD'S COMPLETE WARRANTY PROGRAM, SEE YOUR ROCKWOOD DEALER.

When it comes to backing products with the same quality and commitment it does when it begins the manufacturing process, the only name you have to remember when you're looking for a recreational vehicle is Rockwood. Rockwood offers the following additional limited warranties to the original purchasers. Consult written warranty for details.

**1** Limited lifetime roofing warranty\*

\*Lifetime warranty is limited to original owner

**2** Two-year fiberglass warranty.

**3** Ten-year Torflex® axle warranty.

**4** One-year bumper to bumper warranty.

## SIGNATURE PACKAGES

### SIGNATURE TRAVEL TRAILER STANDARD PACKAGE B

- White Fiberglass Exterior
- High Gloss Fiberglass Cap
- Composite Structural Exterior Walls
- Vacuum Laminated Roof
- Aluminum Cage Construction
- Front Windshield (Where Available)
- Frameless Windows
- Slam Latch Baggage Doors w/Magnetic Catch
- Enclosed Underbelly w/Thermostatically Controlled Heated Holding Tanks
- Pre-wire for Backup Camera
- Power Awning
- 200W Solar Panel w/Inverter & Additional Solar Side Port
- Speaker w/Bluetooth® Connection
- AIR 360+ Omnidirectional Antenna w/Wi-Fi Prep
- One Control® APP Monitor Panel
- Smart TV
- Bunkroom Smart Entertainment TV
- 50 AMP Service
- 12V Refrigerator
- Fireplace (Where Available)
- Maxxair Power Fan w/Remote
- 6 Gallon Quick Recovery Auto Ignite Gas/Electric Water Heater
- Dexter® Torflex® Torsion Axles
- Goodyear Endurance Tires w/TPMS
- Roller Shades
- MORryde Strut Assist Steps
- Key Alike Doors
- Undermount Kitchen Sink w/High Rise Faucet
- Solid Surface Kitchen Countertops
- Soft Close Roller Bearing Drawers
- Soft Close Hidden Cabinet Hinges
- Rear Ladder
- Black Tank Flush
- Shower Miser
- Exterior Hot/Cold Water Port
- Gas Griddle
- 2" Accessory Hitch
- Spare Tire
- Dual 15K BTU A/C Installed (8332SB, 8336BH, 8337RL, 8338DB, 8339FK)
- 15K BTU A/C w/Second A/C Prep, Power Stabilizer Jacks (8263MBR, 8264BHS, 8265KBS)

### OPTIONS

- Andover Sable Woodgrain w/Solid Doors
- 4.0 Leveling System
- Thermopane Windows
- 15K BTU 2nd Roof A/C with Heat (8263MBR, 8264BHS, 8265KBS) STD All Other Models
- 15K BTU 3rd Roof A/C (N/A 8263MBR, 8264BHS, 8265KBS)
- Washer/Dryer (8332SB)
- Washer/Dryer Combo (8336BH, 8337RL, 8338DB, 8339FK)
- 2 Slide Toppers (8263MBR, 8264BHS, 8265KBS)
- 3 Slide Toppers (8332SB, 8337RL, 8339FK)
- 4 Slide Toppers (8336BH, 8338DB)
- Smart Bedroom TV
- Free Standing Table, Chairs & Bench (8332SB, 8336BH, 8337RL, 8338DB)
- Two Swivel Recliners IPO HAB Sofa (8337RL)
- Theater Seating IPO Hide-A-Bed (8336BH, 8338DB)
- King Bed IPO Queen Bed (8332SB, 8336BH, 8338DB)
- Extra 200W Roof Solar Panel
- Extra Maxxair Vent Fan & Cover w/Remote - Bunk Room (N/A with 3rd A/C)
- Extra Maxxair Vent Fan & Cover w/Remote - Bedroom (N/A with STD 2nd A/C)
- Extra Maxxair Vent Fan & Cover w/Remote - Kitchen/Living Room

### SIGNATURE FIFTH WHEEL STANDARD PACKAGE A

- Clay Fiberglass Exterior
- High Gloss Fiberglass Cap
- Composite Structural Exterior Walls
- Vacuum Laminated Roof
- Aluminum Cage Construction
- Frameless Windows
- Slam Latch Baggage Doors w/Magnetic Catch
- Enclosed Underbelly w/Thermostatically Controlled Heated Holding Tanks
- Pre-wire for Backup Camera
- 200W Solar Panel w/Additional Solar Side Port
- Speakers w/Bluetooth® Connection
- AIR 360+ Omnidirectional Antenna w/Wi-Fi Prep
- Smart TV
- Bunkroom Smart Entertainment TV
- 50 AMP Service
- 12V Refrigerator
- Fireplace (Where Available)
- 12 Gallon Quick Recovery Auto Ignite Gas/Electric Waterheater
- Curt® Slipper Roller Axles
- Goodyear Endurance Tires w/TPMS
- Roller Shades
- MORryde Strut Assist Steps
- Key Alike Doors
- Undermount Kitchen Sink w/High Rise Faucet
- Solid Surface Kitchen Countertops
- Soft Close Roller Bearing Drawers
- Soft Close Hidden Cabinet Hinges
- Rear Ladder
- Black Tank Flush
- 4.0 Leveling System
- Dual 15K BTU A/C Installed, 2" Towing Hitch, Curt® Rota-Flex Pinbox (8331RL, 8361RLS, 8371RK, 8372RL, 8374DBH, 8375RL, 8376RK, 8378BH)
- 15K BTU A/C w/Second A/C Prep, Turning Point Pinbox (8281RK, 8282RK, 8301RKS)

### OPTIONS

- Andover Sable Woodgrain w/Solid Doors
- Thermopane Windows
- 15K BTU 2nd Roof A/C with Heat (8281RK, 8282RK, 8301RKS) STD all other Models
- 15K BTU 3rd Roof A/C (N/A 8281RK, 8282RK, 8301RKS)
- Washer/Dryer (8361RLS, 8371RK, 8372RL, 8375RL, 8376RK)
- Washer/Dryer Combo (8374DBH)
- Maxxair Power Fan Cover with Remote
- Slide Topper (8282RK, 8301RKS, 8374DBH)
- 2 Slide Toppers (8281RK, 8331RL, 8376RK, 8378BH)
- 3 Slide Toppers (8361RLS, 8371RK, 8372RL)
- 4 Slide Toppers (8375RL)
- Smart Bedroom TV
- Free Standing Table, Chairs and Bench (OPTION: 8301RKS, 8361RLS, 8374DBH, 8371RK, 8376RK, 8378BH)
- Power Package with 460Ah Lithium Battery
- Second 460Ah Lithium Battery Installed with Power Package
- Theater Seat IPO Dinette (8301RKS, 8374BH)
- Theater Seating IPO Hide-A-Bed (8281RK, 8301RKS)
- Two Swivel Recliners IPO HAB Sofa (8331RL)
- King Bed IPO Queen Bed (STD 8361RLS, 8372RL)
- Extra 200W Roof Solar Panel
- Extra Maxxair Vent Fan & Cover - Bunk Room
- Extra Maxxair Vent Fan & Cover - Bedroom (N/A with STD 2nd A/C)
- Extra Maxxair Vent Fan & Cover w/Remote - Kitchen/Living Room

## EACH NEW FOREST RIVER PURCHASE PROVIDES:

- ✓ Pre-delivery Inspection.
- ✓ Digital Owner's Manual.
- ✓ Free Membership to Forest River Owners Group (FROG). Learn more at [www.forestriverfrog.com](http://www.forestriverfrog.com).
- ✓ A Contribution to Care Camps Foundation [www.carecamps.org](http://www.carecamps.org).
- ✓ 1 Year Free Roadside Assistance from Date of Purchase.



### LEARN MORE:

Scan this QR code with your mobile device to learn more about Forest River.



A Berkshire Hathaway Company



## SPECIFICATION DEFINITIONS:

Scan this barcode using a QR reader on your smartphone to learn RV terminology and more!



YOUR **ROCKWOOD** DEALER

All information contained in this brochure is believed to be accurate at the time of publication. However, during any model year, it may be necessary to make changes to the manufacturing process of the units and information in this brochure. Your unit may differ from the information in this brochure due to any changes in the manufacturing process and equipment. Forest River, Inc., reserves the right to make all such changes without notice, including prices, colors, combinations, materials, equipment and specifications of any model as well as the addition of new models and the discontinuance of models shown in this brochure. Therefore, please consult with your Forest River dealer and confirm the availability of any materials, combinations, designs, or specifications that are meaningful to your purchase decision. © 2024 Rockwood, a Division of Forest River, Inc., a Berkshire Hathaway Company. All Rights Reserved. Forest River, Inc. 10/24